



UNITED KINGDOM TIMBER STATISTICS 2006

Statistics on UK timber harvested and used by primary
wood processing industries in the UK
1996 - 2005

Economics & Statistics, Forestry Commission
31 August 2006 – Revised 14 December 2006



A National Statistics publication

Official statistics bearing the National Statistics logo are produced to high professional standards set out in the National Statistics Code of Practice. They undergo regular quality assurance reviews to ensure that they meet customer needs. They are produced free from political interference.

You can also find National Statistics on the internet – go to www.statistics.gov.uk

Forestry Commission's Statistical Release Practices

The Forestry Commission aims to release statistics as soon as they are available. All of our National Statistics publications are available on our website (www.forestry.gov.uk/statistics) and as hard copies. Release dates are published on our website for the year ahead at six monthly intervals (in June and December) and publications are made available at 12.30 on the day of release. Further details on FC statistical release practices are available in our compliance statement, available on our website.

Forestry Commission's Statistical Revisions Policy

Revisions to statistics can occur when further data become available or errors are corrected. The Forestry Commission will normally revise statistics when the figures next appear in any publication. However, if the revision is significant (i.e. resulting in a major change to the published figures), a note showing the revisions will be published as soon as possible on our website (www.forestry.gov.uk/statistics) and distributed to all known recipients. In addition, the web versions of any current publications affected will be revised.

The correction to softwood exports in 2004 (see note for table 27), which also affects total deliveries in tables 1 and 2, was published on the website in March 2006. However the web versions of last year's publications were not amended.

A few corrections and revisions have been made to the data since the original release of this publication. As a result, tables 2, 5-7 and 10-18 have been revised from those published in August 2006.

Prepared by:

Economics & Statistics
Forestry Commission
231 Corstorphine Road
Edinburgh EH12 7AT
United Kingdom

Enquiries:

Alister Henderson 0131 314 6337
statistics@forestry.gsi.gov.uk

Statistician:

Sheila Ward 0131 314 6475

Website:

www.forestry.gov.uk/statistics

CONTENTS

CONTENTS	3
INTRODUCTION	5
<i>CONVERSION FACTORS</i>	5
<i>ACKNOWLEDGEMENTS</i>	5
SUMMARY 1996 – 2005	6
A: REMOVALS OF SOFTWOOD ROUNDWOOD	10
<i>NON- FORESTRY COMMISSION / FOREST SERVICE WOODLANDS</i>	10
<i>FORESTRY COMMISSION / FOREST SERVICE WOODLANDS</i>	12
<i>TOTAL: ALL WOODLANDS</i>	13
<i>SOFTWOOD AVAILABILITY FORECASTS</i>	13
B: SAWMILLS	14
<i>ANNUAL SAWMILL SURVEY (ALL MILLS)</i>	14
<i>DETAILED SAWMILL SURVEY (LARGER MILLS ONLY)</i>	17
C: PULP & PAPER INDUSTRY	20
D: WOODBASED PANEL PRODUCTS	23
E: MISCELLANEOUS PRODUCTS	25
<i>ROUNDWOOD FENCING MANUFACTURERS</i>	25
<i>SUMMARY FOR MISCELLANEOUS PRODUCTS</i>	27
F: SOFTWOOD EXPORTS	28
G. CONVERSION FACTORS	29

INTRODUCTION

This report contains statistics on removals (harvesting) of roundwood (timber) from forests and woodlands in the UK, and deliveries of roundwood to sawmills and other primary wood processing industries. It also includes some statistics on production of wood products.

Roundwood covers all material from forest operations: logs, small roundwood and roundwood chipped at the harvesting site. Softwood is timber from conifers, such as spruce, pine, fir and larch. Hardwood is timber from broadleaved trees such as oak, beech, ash and sycamore.

This is the second year that the geographic scope has covered all of the United Kingdom – Scotland, England, Wales and Northern Ireland. Previous publications (titled “British Timber Statistics”) excluded Northern Ireland.

The quality of data from the statistical systems used for this report was assessed against National Statistics (NS) standards in 2000. It was concluded that the surveys and other sources since 1994 largely met NS standards. The scope of this NS publication is limited to the period 2001 to 2005, although summary figures back to 1996 are shown in Tables 1-4 and in graphical format.

Statistics for deliveries to primary wood processing industries are for UK mills that use UK roundwood. Imported roundwood is only included if it is used by processors that also use UK roundwood. Processors that only use imported timber and wood products are outside the scope. Secondary processors that use sawnwood or woodpulp to produce other wood products (e.g. furniture or paper) are also outside the scope.

Figures in the tables are individually rounded, so the constituent items may not add to the totals given.

CONVERSION FACTORS

All figures for removals and deliveries are shown throughout this publication in green tonnes. Conversion factors are used to convert between cubic metres (standing, overbark, underbark) and green tonnes (weight when freshly felled, including moisture). The factors used in compiling this publication are shown in Section G.

ACKNOWLEDGEMENTS

This report was compiled by the Forestry Commission (Economics and Statistics), in association with the Expert Group on Timber and Trade Statistics (EGTTS). We gratefully acknowledge the assistance of all members of the EGTTS and of the associations that they represent. We would also like to acknowledge the extensive advice and assistance provided by the Northern Ireland Forest Service (FS) in the collection, quality assurance and presentation of data for Northern Ireland.

SUMMARY 1996 – 2005

This section provides a summary of statistics on deliveries and removals for 1996 to 2005. More detailed figures (covering 2001 to 2005) are provided in subsequent sections.

Table 1 gives the total softwood deliveries to the different sectors, as reported in Sections B – F. This total is then used in Table 2 to compare reported deliveries with the reported softwood removals (Section A). Table 3 summarises deliveries of hardwood as reported in Sections B – F, a figure that is then used to estimate non-FC hardwood removals in Table 4.

Table 1: Deliveries of UK softwood roundwood

000 green tonnes						
Year	Sawmills	Pulpmills	Woodbased panels	Fencing	Other ¹	Total
1996	4,006	853	1,500	385	135	6,879
1997	4,081	940	1,690	371	134	7,216
1998	4,156	844	1,527	401	134	7,063
1999	4,454	660	1,613	424	157	7,309
2000	4,473	695	1,685	357	169	7,379
2001	4,590	668	1,680	354	215	7,507
2002	4,661	696	1,456	298	288	7,399
2003	4,788	704	1,486	275	477	7,730
2004 ²	4,894	483	1,525	282	790	7,974
2005	4,982	500	1,502	342	890	8,216

¹ Roundwood exports, fuelwood and other miscellaneous products excluding fencing. Data before 2004 exclude roundwood exports from Northern Ireland.

² Figures for 2004 for other and total have been revised down by 320,000 green tonnes (see table 27)

Figure 1: Deliveries of UK softwood roundwood

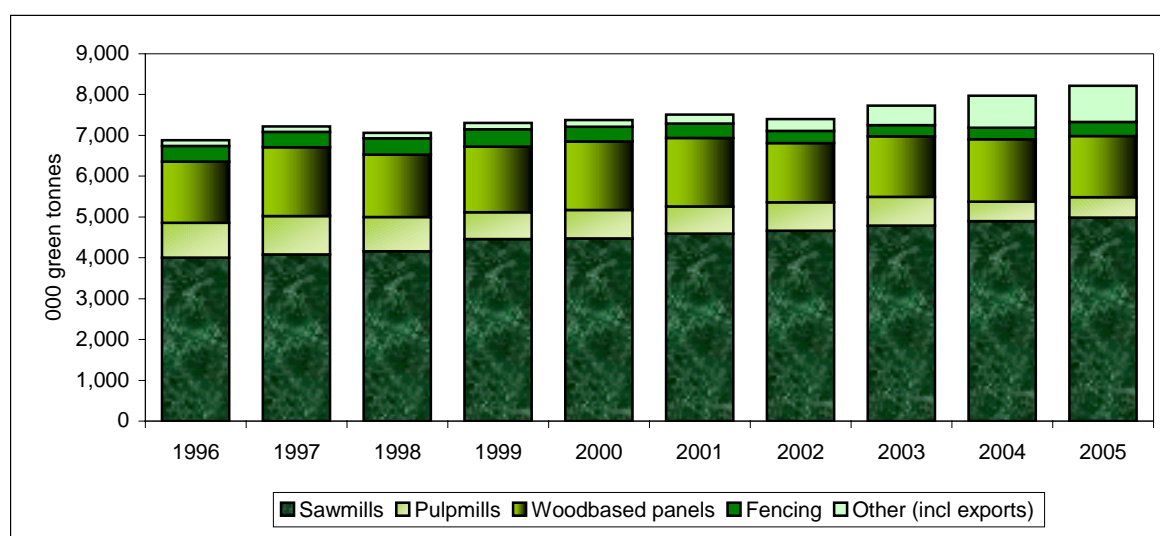


Table 2: Comparison of removals and deliveries of UK softwood roundwood

000 green tonnes					
Year	FC/FS removals	Non-FC/FS removals	Total removals	Deliveries	Balance ¹
1996	3,720	2,761	6,481	6,879	-398
1997	3,949	2,846	6,795	7,216	-421
1998	4,188	2,638	6,826	7,063	-236
1999	4,725	2,555	7,280	7,309	-29
2000	4,850	2,580	7,430	7,379	51
2001	4,604	2,900	7,504	7,507	-3
2002	4,650	3,029	7,679	7,399	280
2003	4,817	3,592	8,409	7,730	679
2004	4,894	3,803	8,697	7,974	723
2005	4,579	4,144	8,723	8,216	507

¹ The difference between reported removals and deliveries. This can be caused by variations in the level of stocks between harvesting and delivery to the wood processor, but a persistent difference indicates that statistics for removals and/or deliveries may be unreliable.

Figure 2: Comparison of removals and deliveries of UK softwood roundwood 1996 - 2005

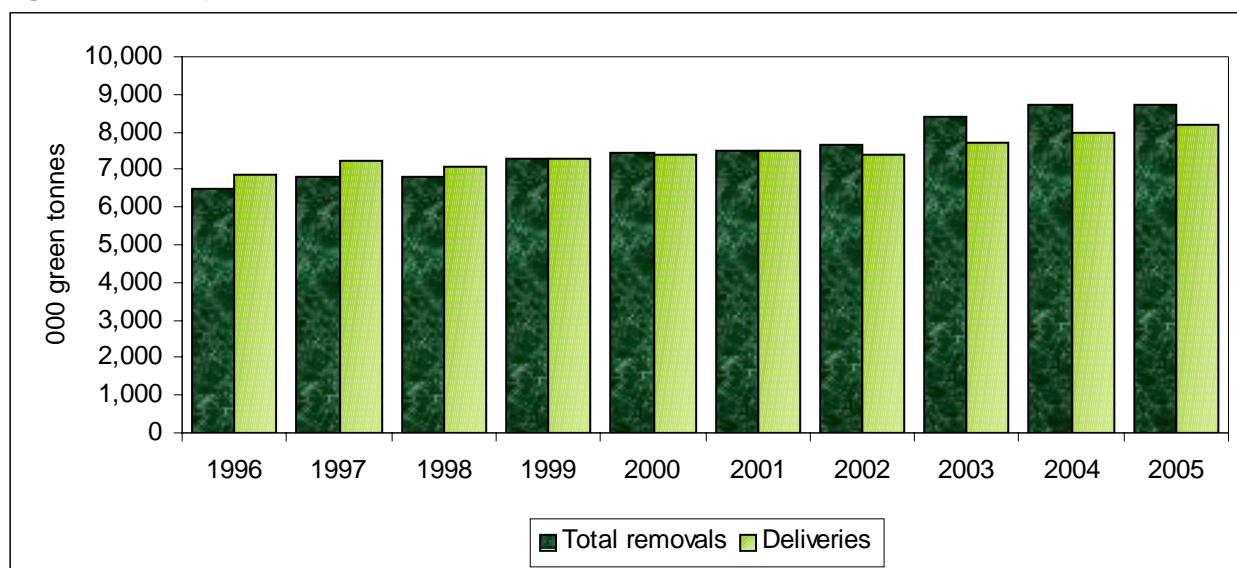


Figure 3: Comparison of removals and deliveries of UK softwood roundwood: Balance

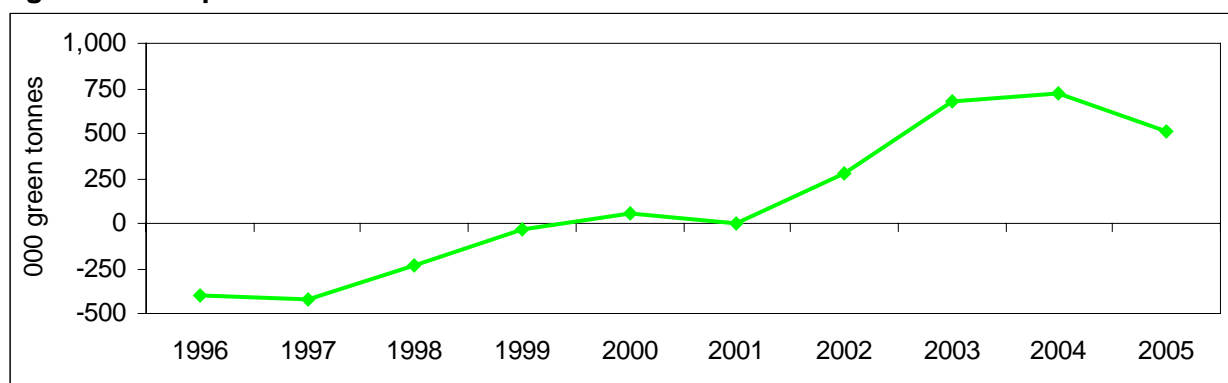
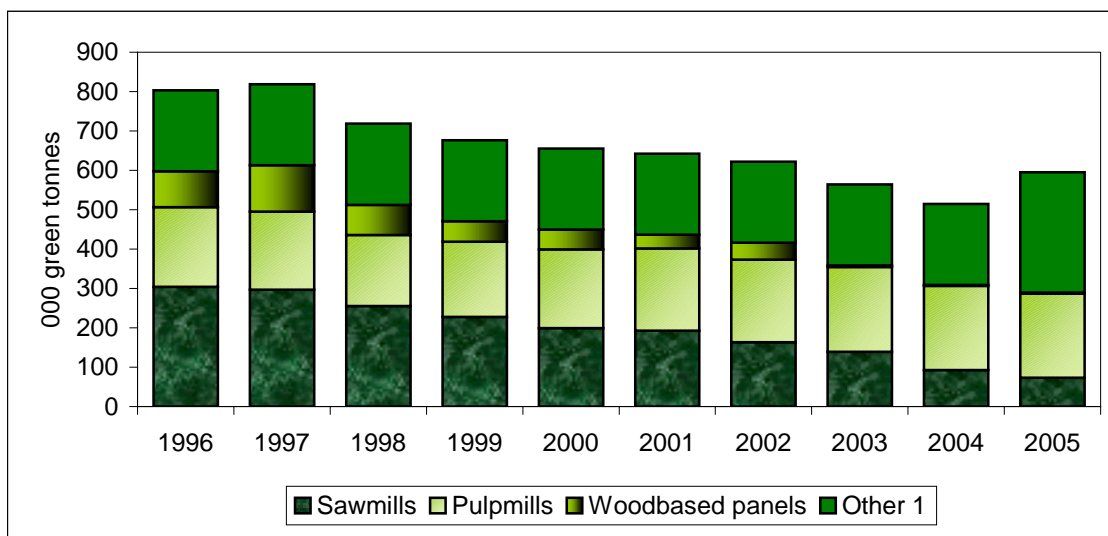


Table 3: Deliveries of UK hardwood roundwood

000 green tonnes					
Year	Sawmills	Pulpmills	Woodbased panels	Other ¹	Total
1996	304	202	91	206	803
1997	297	198	118	206	819
1998	255	180	77	206	718
1999	228	191	52	206	677
2000	200	200	50	206	656
2001	192	209	35	206	642
2002	163	210	43	206	622
2003	139	215	4	206	564
2004	93	214	2	206	515
2005	73	214	2	306	595

¹ Fencing, fuelwood and other miscellaneous products. The estimate for fuelwood was increased from 2005.

Figure 4: Deliveries of UK hardwood roundwood 1996 – 2005



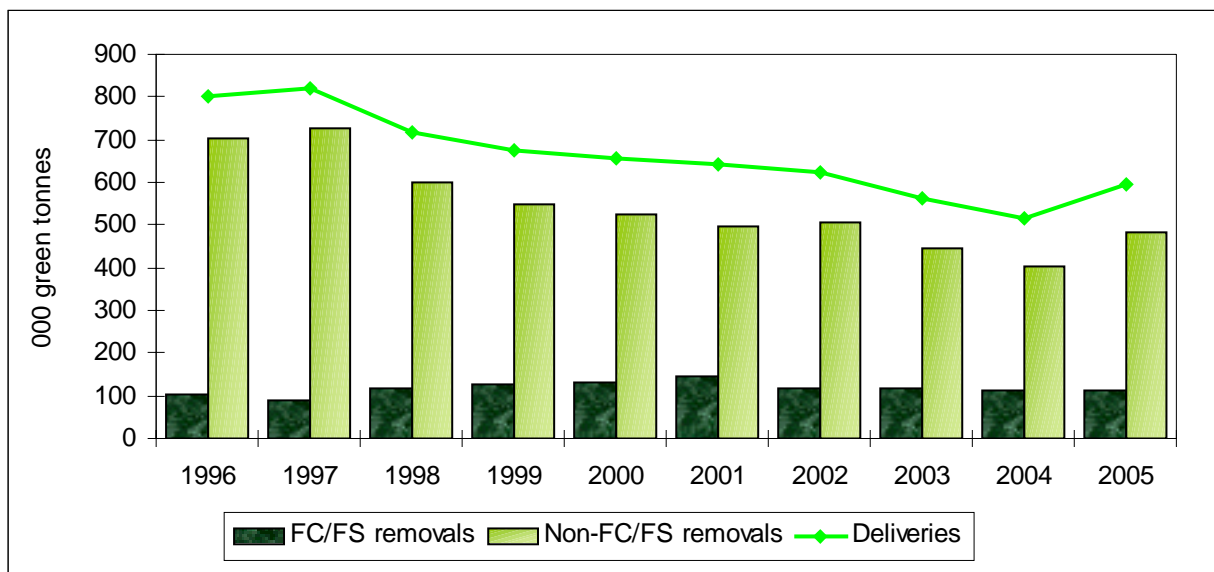
¹ Other includes fencing

Table 4: Estimation of hardwood removals from non-FC/FS woodlands

Year	000 green tonnes		
	Deliveries	FC/FS removals	Non-FC/FS removals ¹
1996	803	101	702
1997	819	91	728
1998	718	118	600
1999	677	128	549
2000	656	130	526
2001	642	145	497
2002	622	118	504
2003	564	117	447
2004	515	113	402
2005	595	112	483

¹ Removals from non-FC/FS woodlands are estimated as Deliveries less FC/FS Removals. There is no survey or data source to obtain data for hardwood removals from non-FC/FS woodland.

Figure 5: Estimation of hardwood removals 1996 - 2005



A: REMOVALS OF SOFTWOOD ROUNDWOOD

This section provides information on softwood removals. Figures are provided for non-Forestry Commission / Forest Service (non-FC/FS) woodlands and for FC/FS woodlands separately. The final part of this section presents figures for all softwood removals and includes forecasts of softwood availability. A few revisions have been made to the data since the original release of this publication. As a result, tables 5-7 have been revised from those published in August 2006.

NON- FORESTRY COMMISSION / FOREST SERVICE WOODLANDS

A total of 40 forms were sent out to harvesting companies in the UK, and 28 responses were received (a response rate of 70%).

The percentage change from the survey results is used to roll forward the estimated total. As Northern Ireland figures were not collected for years before 2004, the estimated UK total has been assumed to move in line with GB results. The survey results include figures for the companies that reported data for both years, and include estimates for non-respondents who have provided data in both earlier and later years. If no data have been received for the latest year, the company is excluded from the survey results, but may be added as a revision in later years if data become available.

It is estimated that a total of 4.1 million green tonnes of softwood was removed from non-FC/FS woodlands in 2005. This represents a 9% increase from the previous year's revised figure of 3.8 million green tonnes.

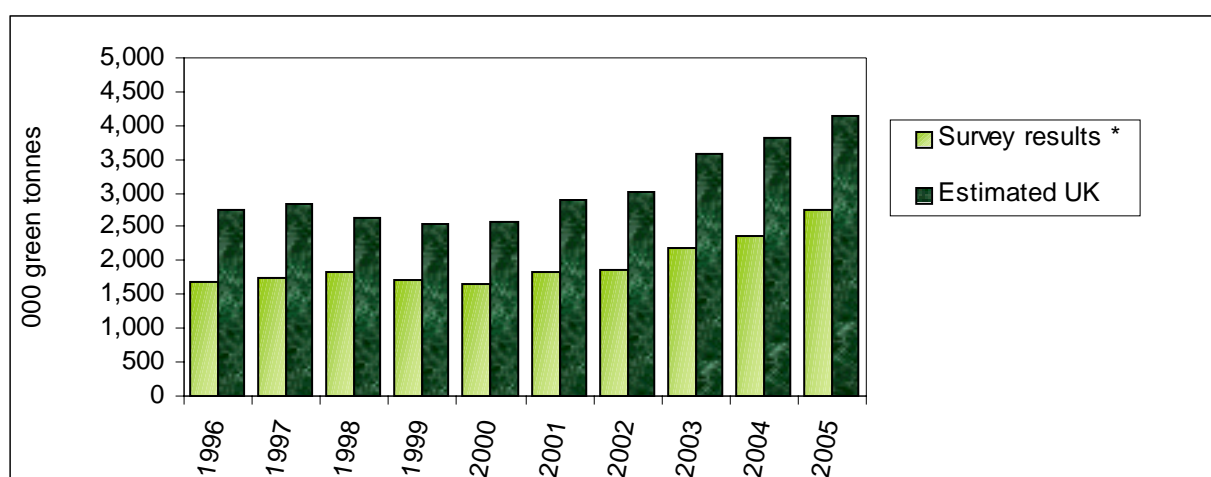
Table 5: Softwood removals survey

Year	Survey response	Survey Results		% change on previous year	Estimated UK total
		Previous year	Latest year		
2001 ¹	30 / 42	1,634	1,837	+12%	2,900
2002 ¹	24 / 35	1,782	1,862	+4%	3,029
2003 ¹	24 / 33	1,851	2,199	+19%	3,592
2004 ²	33 / 41	2,225	2,356	+6%	3,803
2005	28 / 40	2,530	2,757	+9%	4,144

¹ Survey results exclude Northern Ireland before 2004.

² The figure for 2004 has been revised down by 9%, after correcting an incorrect figure previously provided by one company.

Figure 6: Softwood removals survey, 1996 – 2005

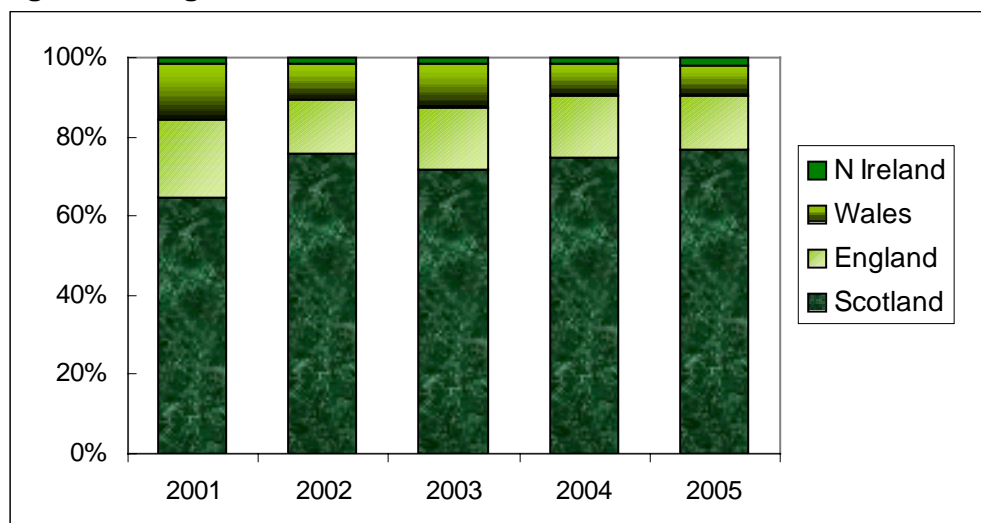


* survey results for 2004 and 2005 include Northern Ireland

Origin of non FC/ FS softwood

It is estimated that 77% of all softwood removals from non-FC/FS woodlands were harvested in Scotland, 14% in England, 8% in Wales and 2% in Northern Ireland in 2005.

Figure 7: Origin of non FC/ FS softwood, 2001 - 2005



Certification

Certification, e.g. to the UK Woodland Assurance Standard (UKWAS), demonstrates that an area of woodland is sustainably managed. For the 25 respondents reporting softwood removals from non-FC/FS woodland in 2005, a total of 1.9 million green tonnes (69%) was from certified woodland.

FORESTRY COMMISSION / FOREST SERVICE WOODLANDS

Information on removals from Forestry Commission and Forest Service woodlands is extracted from administrative records.

A total of 4.6 million green tonnes of softwood was removed from FC/FS woodlands in 2005. This represents a 6% fall on the previous year's figure of 4.9 million green tonnes.

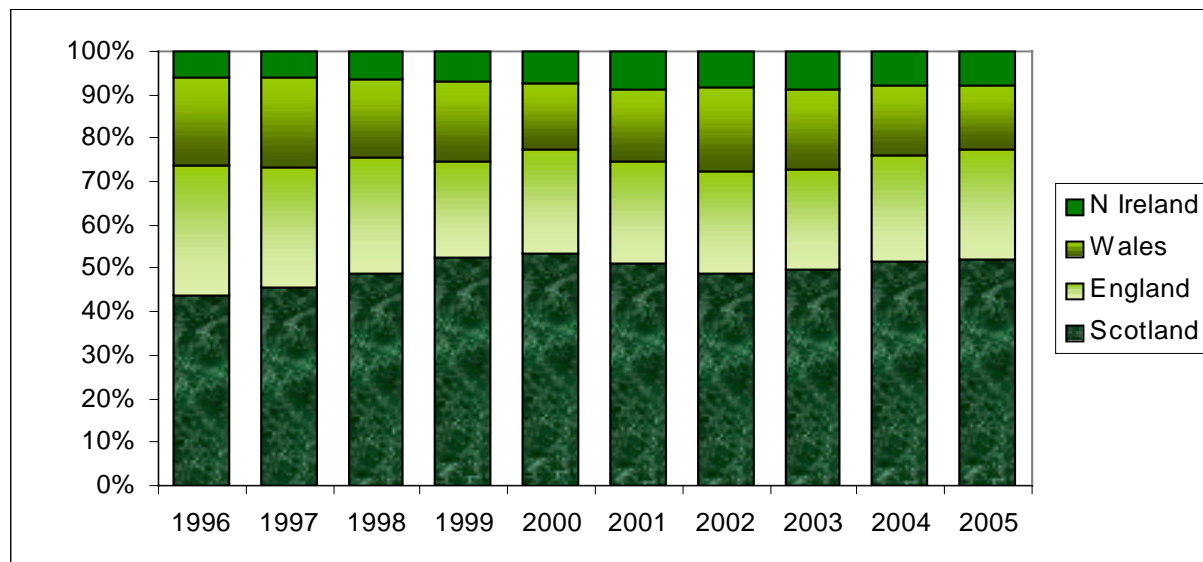
Table 6: Forestry Commission / Forest Service softwood removals

Year	000 green tonnes				
	Scotland (Forestry Commission)	England	Wales	N Ireland (Forest Service)	UK (Total FC / FS)
2001	2,354	1,075	779	396	4,604
2002	2,268	1,103	894	385	4,650
2003	2,405	1,107	880	424	4,817
2004	2,527	1,204	783	380	4,894
2005	2,388	1,165	673	353	4,579

Origin of Forestry Commission / Forest Service softwood

52% of all softwood removals from FC/FS woodlands were harvested in Scotland, 25% in England, 15% in Wales and 8% in Northern Ireland in 2005.

Figure 8: Origin of Forestry Commission / Forest Service softwood 1996 - 2005



Certification

All timber from Forestry Commission and Forest Service woodlands is certified.

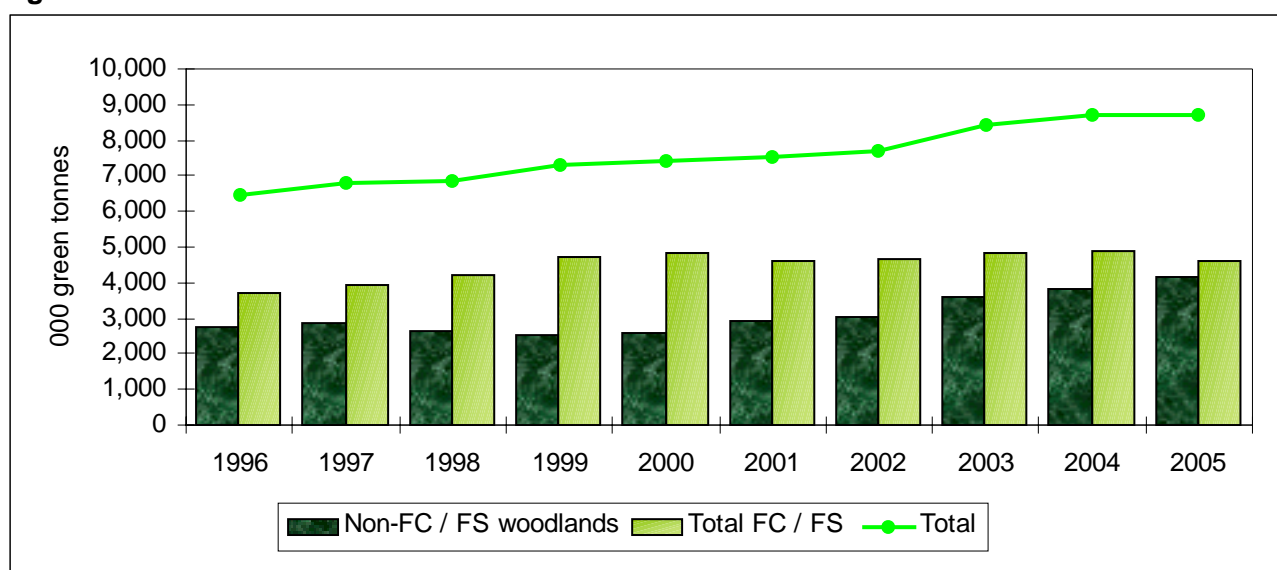
TOTAL: ALL WOODLANDS

Total softwood removals in 2005 were around the same level as the previous year; 52% of the total was from FC/FS woodlands.

Table 7: Total softwood removals 2001 - 2005: All Woodlands

Year	000 green tonnes				
	Non FC / FS	FC / FS	Total	% Non FC / FS	% FC / FS
2001	2,900	4,604	7,504	39	61
2002	3,029	4,650	7,679	39	61
2003	3,592	4,817	8,409	43	57
2004	3,803	4,894	8,697	44	56
2005	4,144	4,579	8,723	48	52

Figure 9: Total softwood removals 1996 - 2005: All Woodlands



SOFTWOOD AVAILABILITY FORECASTS

Forecasts of softwood availability are produced at intervals of approximately 5 years. New forecasts were published on the FC website in September 2006.

No forecasts are currently published for hardwood availability.

B: SAWMILLS

This section presents results from the 2005 sawmill survey. Consumption figures include imported sawlogs as well as UK grown sawlogs. Production therefore also includes sawnwood produced from both imported and UK grown sawlogs. The first part of this section presents data on sawlog consumption and sawnwood production for all mills, whilst the second part presents more detailed information for mills producing more than 10,000 m³ of sawnwood. A few corrections have been made to the data since the original release of this publication. As a result, tables 10-18 have been revised from those published in August 2006.

Consumption units are given in green tonnes, which includes moisture; for production, the units used are m³ sawnwood.

SAWMILL SURVEY (ALL MILLS)

In the 2005 survey, questionnaires were issued to a total of 257 sawmills. A total of 143 responses were received, giving an overall response rate of 56%. These respondents accounted for 78% of total softwood consumption and 49% of total hardwood consumption.

The latest estimates for consumption (green tonnes) and sawnwood production (m³) in the last five years, including estimates for non-respondents, are shown in Table 8.

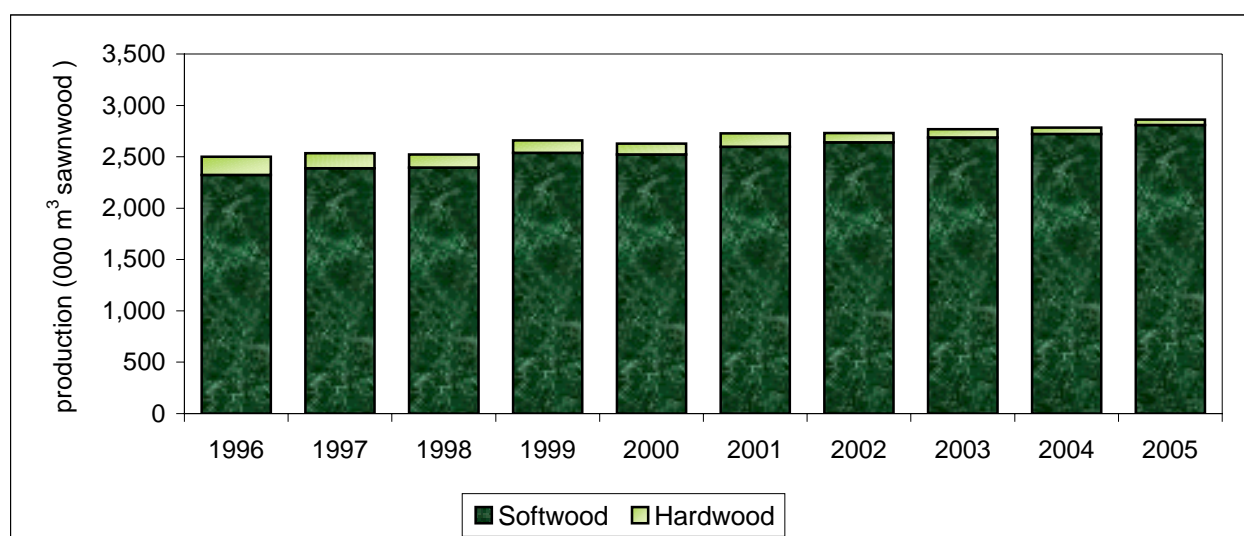
Sawmills consumed a total of 5.3 million green tonnes of softwood in 2005, an increase of 3% from the 2004 figure. Over the same period, hardwood consumption fell by 12% to 107 thousand green tonnes in 2005.

Table 8: Consumption & production, 2001-2005

	Softwood			Hardwood		
	Consumption of		Production	Consumption of		Production
	UK grown	Imported		UK grown	Imported	
2001	4,590	239	2,598	192	70	130
2002	4,661	235	2,640	163	18	91
2003	4,788	225	2,687	139	18	81
2004	4,894	226	2,722	93	28	61
2005	4,982	272	2,808	73	34	54

consumption: **000 green tonnes**
production: **000 m³**

Figure 10: Sawnwood production



It is estimated that there were 228 active sawmills in the UK in 2005. The majority of sawmills (70%) produced less than 5 thousand cubic metres of sawnwood in 2005.

Table 9: Number of sawmills, 2001-2005

	Number of sawmills				
	2001	2002	2003	2004	2005
No of active mills	280	259	251	235	228
Production¹					
< 1,000	104	96	96	92	93
1,000 - <5,000	96	87	82	73	67
5,000 - <10,000	28	26	22	20	20
10,000 - <25,000	24	24	23	22	19
25,000 - <50,000	13	10	12	10	9
>=50,000	15	16	16	18	20
Country					
Scotland	86	82	80	76	73
England	152	139	134	123	120
Wales	27	23	22	21	20
N Ireland	15	15	15	15	15
Wood sawn					
Softwood only	182	169	164	153	155
Hardwood only	26	23	21	19	18
Both	72	67	66	63	55

¹ Categories are based on **total** sawnwood production, in cubic metres

Sawmills with total sawnwood production of more than 10 thousand cubic metres accounted for 91% of the total softwood consumed by sawmills in 2005. Of all softwood delivered to sawmills in 2005, mills in Scotland consumed almost one half (47%). A further 26% of softwood deliveries were consumed by mills in England, 14% in Wales and the remaining 13% in Northern Ireland.

Table 10: Softwood consumption & production, 2005

consumption: **000 green tonnes**
production: **000 m³**

	Softwood	
	Consumption	Production
UK Total	5,254	2,808
Production¹		
< 1,000	33	19
1,000 - <5,000	218	127
5,000 - <10,000	232	121
10,000 - <25,000	549	289
25,000 - <50,000	606	325
>= 50,000	3,616	1,926
Country		
Scotland	2,476	1,338
England	1,347	735
Wales	746	370
N Ireland	685	365

¹ Categories are based on **total** sawnwood production, in cubic metres

Certification

Sawmills were asked a few questions on certification. Excluding nil responses, there were 125 sawmills providing data for 2005. 50 (40%) reported that they held a chain of custody certificate, although this proportion varied from 24% of mills producing less than 5 thousand m³ of sawnwood in 2005 to 95% of those producing at least 25 thousand m³ of sawnwood.

Table 11: Chain of custody certificates¹, 2005

	Production ²			Number of sawmills
	<5	5 - <25	25+	Total
Total	79	25	21	125
Mills holding certificate	19	11	20	50
Mills without certificate	57	14	1	72
Certification status not reported	3	0	0	3

¹ Sawmills responding in 2005, excluding nil responses. These 125 mills accounted for 78% of the estimated total sawnwood production in 2005.

² Categories are based on **total** sawnwood production

The following table shows the estimated percentage of certified input and output volumes for all mills in 2002-2005, extrapolated from responses received. Certified timber accounted for around three quarters of sawlog consumption and sawnwood production in 2005. These proportions varied by size of mill, with larger mills generally reporting higher levels of certified timber than smaller mills.

Table 12: Consumption and production certified, 2002-2005

		Production ¹			per cent
		<5	5 - <25	25+	Total
% consumption certified	2002	11%	38%	79%	66%
	2003	21%	52%	74%	67%
	2004	18%	43%	94%	81%
	2005	29%	48%	85%	76%
% production certified	2002	5%	20%	82%	63%
	2003	4%	29%	60%	50%
	2004	12%	27%	76%	64%
	2005	16%	28%	83%	71%

¹ Categories are based on **total** sawnwood production

DETAILED SAWMILL SURVEY (LARGER MILLS ONLY)

Additional information was collected for 2005 from mills that, based on responses to previous surveys, were believed to produce more than 10 thousand m³ of sawnwood. Similar information was collected at two yearly intervals from 1996 to 2004 and less frequently before then, for mills with production greater than 5 thousand m³ of sawnwood.

Of the 47 mills who were sent a detailed questionnaire, 36 responded (77%). Data from previous biennial surveys have been used to estimate figures for those who had responded in previous years but not for 2005. This gave reported or estimated data for a total of 48 mills, representing about 90% of softwood consumption and production.

Only three of these 48 mills reported using hardwood in 2005. No further analysis of hardwood is shown in this section.

SOFTWOOD

Total softwood consumption by all sawmills covered by the more detailed survey was 4.77 million green tonnes. Softwood sawnwood production was 2.54 million m³. Other products (chips, bark, sawdust etc.) amounted to 2.41 million tonnes.

Table 13: Larger mills - softwood consumption and production

	Scotland	England	Wales	N Ireland	UK
Number of mills	23	15	7	3	48
Consumption (000 green tonnes)	2,256	1,145	696	674	4,771
Sawnwood production (000 m ³)	1,218	618	346	359	2,540
Other products (000 tonnes)	1,054	600	405	348	2,408

Source of logs: Northern Ireland has been excluded from this table, to avoid disclosing data for an individual mill. For GB, of all softwood sawlogs with source reported, 56% came from Scotland, 26% from England and 17% from Wales.

89% of softwood sawlogs used by Scottish mills came from Scotland. The corresponding proportions of mills' log use coming from within the same country were 67% for Wales and 57% for England.

Table 14: Source of logs (GB)

	Scotland	England	Wales	000 green tonnes GB
Source				
Scotland	1,760	244	69	2,073
England	226	598	154	979
Wales	0	198	447	645
Total GB logs	1,987	1,041	670	3,697
Other countries	-	2	-	2
Source not reported	270	103	25	398
Total log consumption	2,257	1,145	696	4,098

Species: Spruce accounted for the majority of softwood consumed by UK mills (79%), with pine accounting for a further 12% and other conifers 9%.

Table 15: Species of log cut

	per cent				
	Scotland	England	Wales	N Ireland	UK
Spruce	83%	65%	76%	93%	79%
Pine	12%	22%	6%	3%	12%
Other softwoods	5%	13%	18%	4%	9%

Sawnwood product markets: In 2005, 37% of softwood sawnwood production was used for fencing, 34% for construction, 28% for packaging and pallets and the remaining 2% went to all other markets.

Table 16: Sawnwood product markets

	per cent				
	Scotland	England	Wales	N Ireland	UK
Construction	45%	23%	19%	31%	34%
Fencing	27%	51%	40%	38%	37%
Packaging / pallets	28%	25%	42%	20%	28%
Other	1%	2%	0%	10%	2%

Other products: Other products (excluding sawnwood) from softwood amounted to 2.41 million tonnes. Around two thirds of these other products were sold to wood processing industries in the form of chips, 7% was sold to wood processing industries as bark and 16% was sold to these industries in other formats (e.g. sawdust). A further 5% of other products was sold to other industries and 7% was sold for bio-energy.

Table 17: Other products

	per cent				
	Scotland	England	Wales	N Ireland	UK
Sold to wood processing industries					
Wood chips	67%	67%	63%	49%	64%
Bark	5%	8%	6%	10%	7%
Sawdust & other	18%	21%	14%	3%	16%
Sold to bio-energy (inc pellet manufacturers)					
Wood chips	0%	0%	2%	19%	3%
Bark	0%	0%	0%	0%	0%
Sawdust & other	0%	0%	4%	15%	3%
Not specified	0%	0%	6%	0%	1%
Used internally for heat / energy	3%	0%	1%	0%	1%
Other sales					
Wood chips	1%	2%	0%	1%	1%
Bark	3%	1%	3%	1%	2%
Sawdust & other	2%	1%	1%	2%	2%
Firewood	0%	0%	0%	0%	0%
Disposed of as waste	0%	0%	0%	0%	0%

Employment

There were estimated to be 2,642 direct employees and 868 other employment by sawmills producing over 10 thousand m³ of sawnwood in 2005.

The questionnaire wording was improved for 2005 to clarify the distinction between direct employees and others. However for mills that were non-respondents for 2005, the tabled results have been carried forward from data that had been reported in previous years using the old questionnaire.

Table 18: Sawmill Employment

Employment	Full time equivalents				
	Scotland	England	Wales	N Ireland	UK
Direct					
Line, production and maintenance staff	921	705	239	279	2,144
Managerial, sales and administrative staff	144	145	31	74	394
Haulage of sawnwood and other sawmill products	36	60	7	1	104
Total direct employment	1,101	910	277	354	2,642
Other					
Line, production and maintenance staff	66	313	73	26	478
Managerial, sales and administrative staff	0	3	5	0	8
Haulage of sawnwood and other sawmill products	150	39	90	103	382
Total other employment	216	355	168	129	868

C: PULP & PAPER INDUSTRY

Consumption

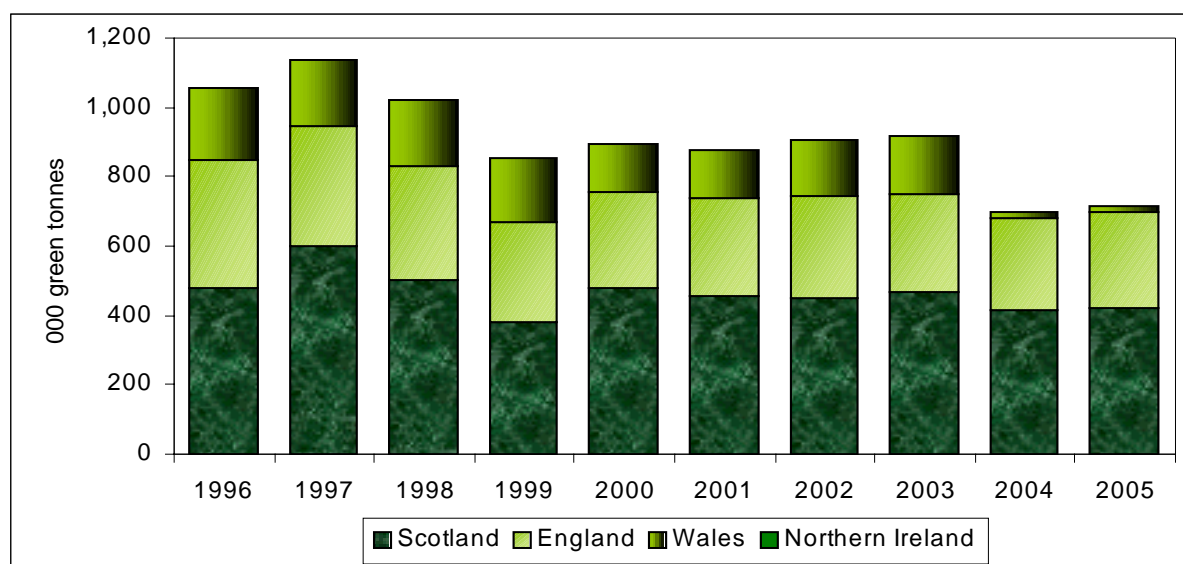
The statistics for the pulp and paper industry in Tables 19 - 20 only cover the integrated pulp and paper mills that use UK roundwood. There were four such mills until 2003, and three in 2004 and 2005. Figures were provided by the UK Forest Products Association (UKFPA).

These mills consumed 500 thousand green tonnes of UK grown soft roundwood in 2005, a 4% increase on 2004. Hardwood figures were unchanged from 2004, at 214 thousand green tonnes.

Table 19: Origin of UK roundwood used by the integrated pulp and paper mills

	000 green tonnes				
	2001	2002	2003	2004	2005
UK	877	906	919	697	714
Softwood	668	696	704	483	500
Hardwood	209	210	215	214	214
Scotland	454	448	466	416	423
Softwood	454	448	466	416	423
Hardwood	0	0	0	0	0
England	286	298	283	267	277
Softwood	86	98	87	67	77
Hardwood	200	200	196	200	200
Wales	137	160	170	14	14
Softwood	128	150	151	0	0
Hardwood	9	10	19	14	14
Northern Ireland	0	0	0	0	0
Softwood	0	0	0	0	0
Hardwood	0	0	0	0	0

Figure 11: Origin of UK roundwood used by the integrated pulp and paper mills



UK roundwood represented 84% of the inputs for the integrated pulp and paper mills in 2005, with the remaining 16% coming from sawmill products.

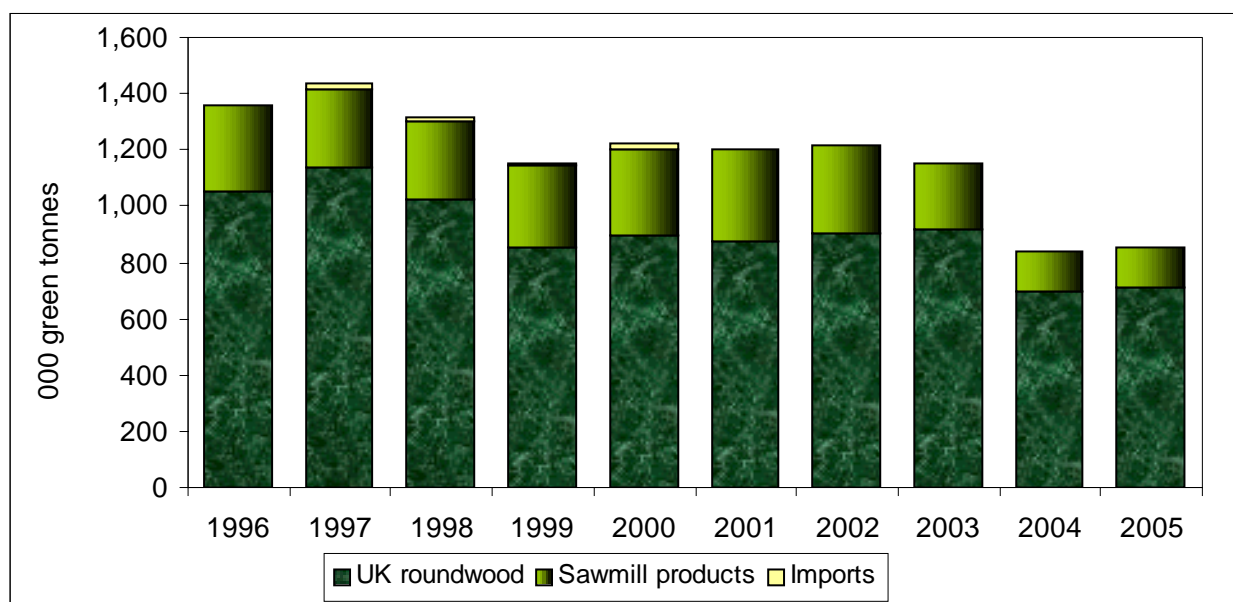
Table 20: Inputs for the integrated pulp and paper mills

	000 green tonnes				
	2001	2002	2003	2004	2005
UK roundwood ¹	877	906	919	697	714
Softwood	668	696	704	483	500
Hardwood	209	210	215	214	214
Sawmill products ²	323	307	234	143	138
Softwood	323	307	234	143	138
Hardwood	0	0	0	0	0
Total	1,200	1,213	1,153	840	852
Softwood	991	1,003	938	626	638
Hardwood	209	210	215	214	214

¹ UK roundwood includes all material from forest operations.

² Sawmill products include peeled and unpeeled chips, sawdust, slabwood, shavings, postplant chips and peelings.

Figure 12: Inputs for the integrated pulp and paper mills



Production

Figures for the production of pulp and paper are provided by the Paper Federation of Great Britain. They cover all paper production from UK mills, not just those using UK roundwood.

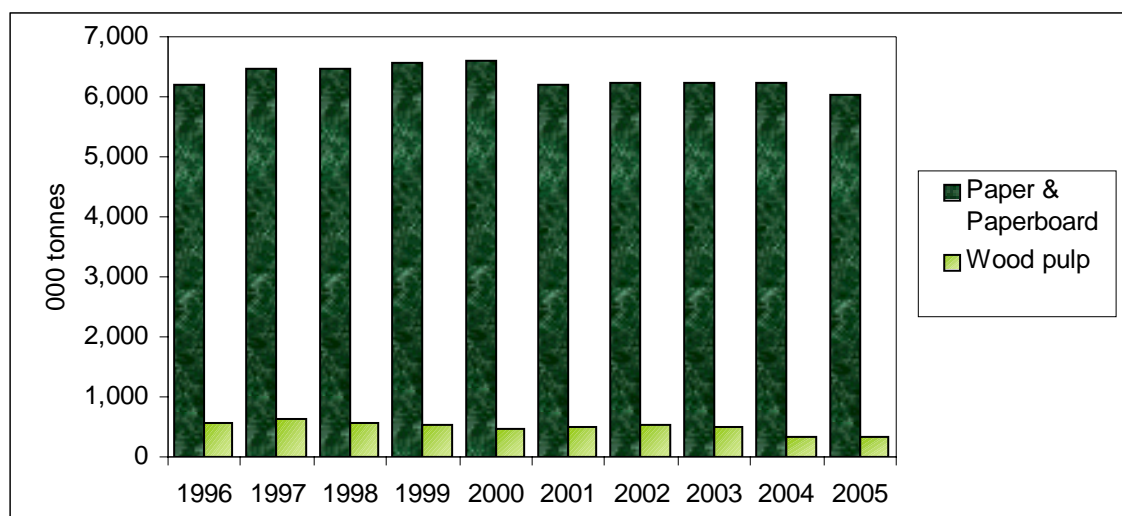
A total of 6.0 million tonnes of paper and 0.3 million tonnes of wood pulp were produced by UK paper mills in 2005.

Table 21: Production of pulp and paper

	000 tonnes				
Product	2001	2002	2003	2004	2005
Paper & Paperboard	6,204	6,218	6,226	6,240	6,033
Graphic papers (inc newsprint)	2,627	2,526	2,532	2,632	2,654
Sanitary & household papers	738	823	808	806	795
Packaging materials	2,190	2,207	2,240	2,230	1,989
Other	649	662	646	572	595
Wood pulp ¹	492	524	504	344	341
Mechanical	429	444	413	258	341
Semi-Chemical	63	80	91	86	0

¹ These figures for wood pulp measure the intermediate product in integrated mills.

Figure 13: Production of pulp and paper 1996 - 2005



D: WOODBASSED PANEL PRODUCTS

Consumption

The statistics for inputs to the woodbased panel products sector in the UK have been supplied by the Wood Panel Industries Federation (WPIF).

A total of 1.5 million green tonnes of UK roundwood was consumed by the woodbased panel products sector in 2005, a slight fall from the previous year. A further 1.7 million green tonnes of sawmill products and 1.0 million green tonnes of recycled wood fibre were also consumed in 2005.

Table 22: Inputs for woodbased panel products

	000 green tonnes				
	2001	2002	2003	2004	2005
UK roundwood ¹					
Total	1,715	1,499	1,490	1,527	1,504
Softwood	1,680	1,456	1,486	1,525	1,502
Hardwood	35	43	4	2	2
Sawmill products ²					
Total	1,675	1,669	1,686	1,778	1,734
Softwood	1,675	1,669	1,682	1,778	1,732
Hardwood	0	0	4	0	2
Imports ³					
Total	38	13	22	9	6
Softwood	13	13	22	9	6
Hardwood	25	0	0	0	0
Recycled wood fibre ⁴	675	932	993	1,078	1,043
Total	4,103	4,113	4,191	4,392	4,287
Softwood	3,368	3,138	3,190	3,312	3,240
Hardwood	60	43	8	2	4
Recycled wood fibre	675	932	993	1,078	1,043

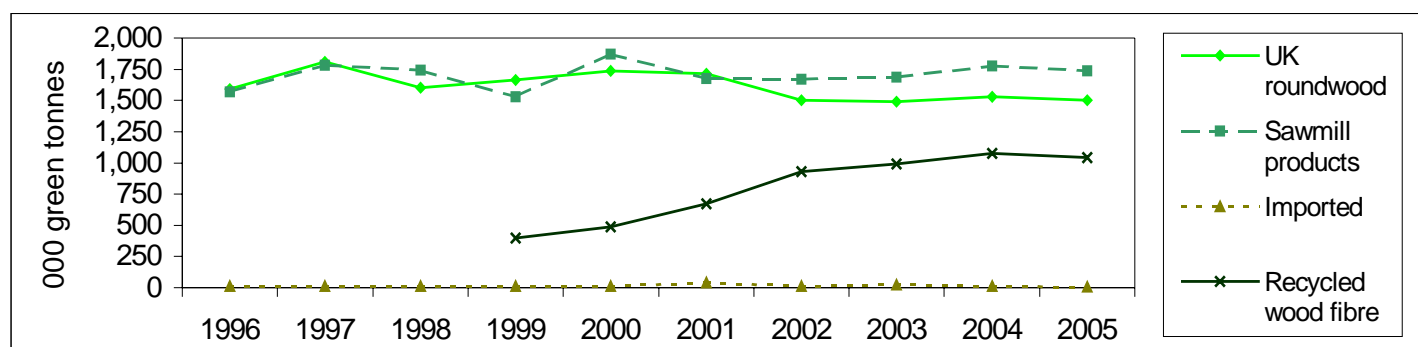
¹ UK roundwood includes all material from forest operations.

² Sawmill products include peeled and unpeeled chips, sawdust, slabwood, shavings, postplant chips and peelings.

³ Imports include roundwood, wood products and products from imported wood.

⁴ Recycled wood fibre is wood fibre recovered from both pre- and post-consumer wood waste for use in woodbased panel production.

Figure 14: Inputs for woodbased panel products 1996 - 2005



Production

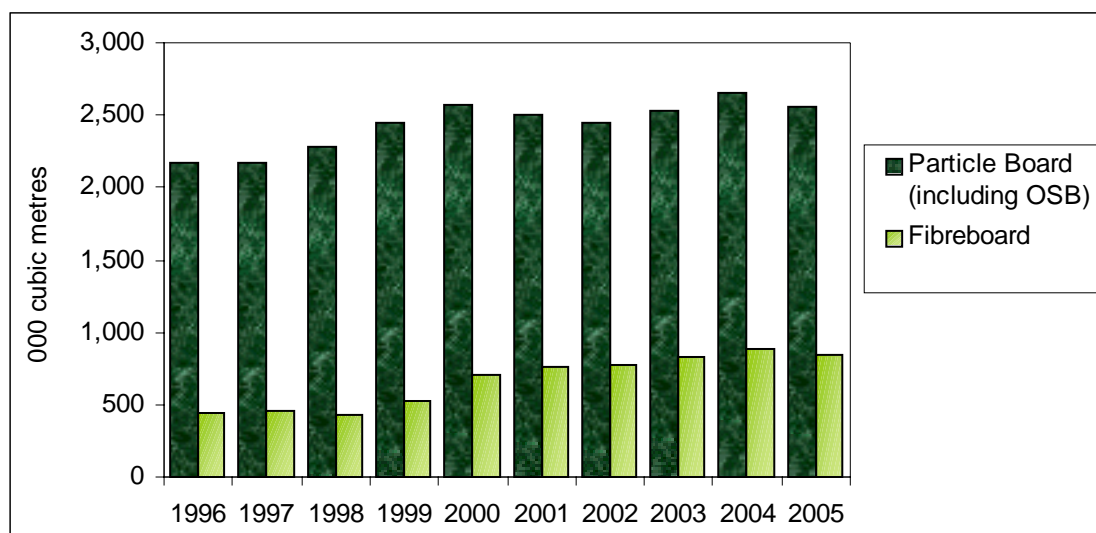
Figures for the production of woodbased panel products are provided by the Wood Panel Industries Federation (WPIF).

A total of 3.4 million m³ of woodbased panel products were produced in 2005. The majority of this total (75%) was particleboard and oriented strand board (OSB).

Table 23: Production of woodbased panel products

	000 m ³				
Product	2001	2002	2003	2004	2005
Total woodbased panels	3,255	3,217	3,361	3,533	3,398
Particleboard (inc OSB)	2,498	2,446	2,526	2,653	2,557
Fibreboard (MDF)	757	771	835	880	841

Figure 15: Production of woodbased panel products 1996 - 2005



E: MISCELLANEOUS PRODUCTS

ROUNDWOOD FENCING MANUFACTURERS

Surveys of roundwood fencing manufacturers have been carried out annually since 1993. The survey is believed to give good coverage of softwood fencing. However, as the coverage of hardwood is believed to be very limited, no results are provided for hardwood fencing.

As for the sawmill and private sector removals surveys, the survey of round fencing manufacturers was extended in 2004 to include manufacturers in Northern Ireland. For 2005, questionnaires were sent out to a total of 103 manufacturers and 60 responses were received (58% response).

Based on the 2005 survey, including estimates for non respondents, it is estimated that there were 73 manufacturers using a total of 342 thousand green tonnes of softwood.

Table 24: Softwood round fencing – number of manufacturers

Year	Size category (green tonnes p.a.)				Total
	Under 1,000	1,000-4,999	5,000-9,999	10,000+	
2001	41	33	9	7	90
2002	34	25	11	7	77
2003	28	28	10	6	72
2004	29	29	8	6	72
2005	31	26	7	9	73

Figure 16: Softwood round fencing – number of manufacturers 1996 - 2005

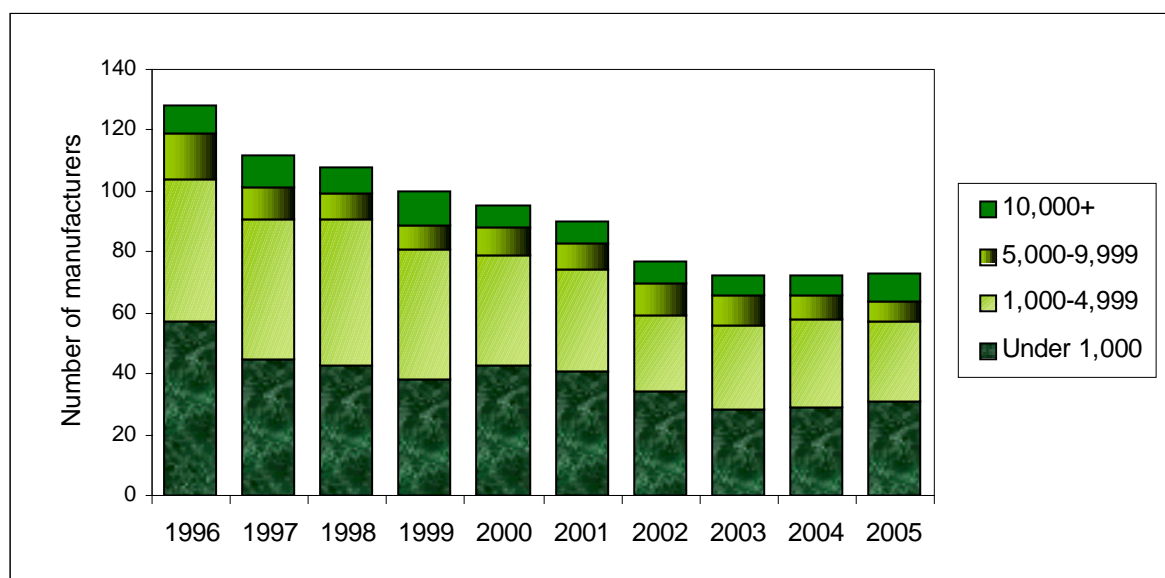
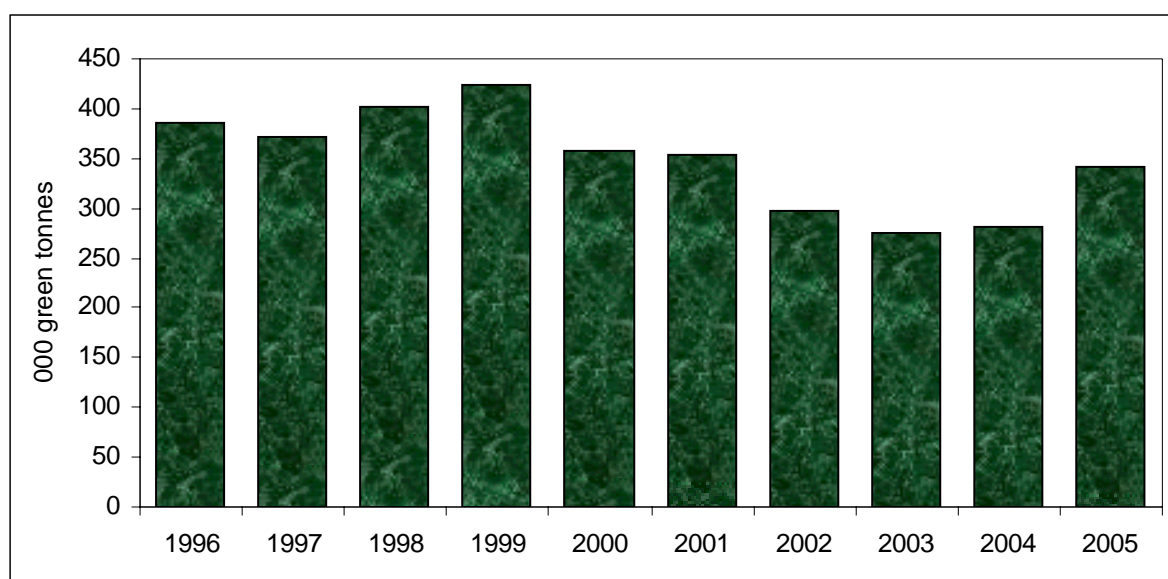


Table 25: UK roundwood purchased by softwood round fencing manufacturers

Year	Size category (green tonnes p.a.)				Total
	Under 1,000	1,000-4,999	5,000-9,999	10,000+	
2001	13	74	68	200	354
2002	12	63	76	148	298
2003	10	62	71	132	275
2004	10	69	60	143	282
2005	12	66	49	214	342

Figure 17:
UK roundwood purchased by softwood round fencing manufacturers 1996 - 2005



Certification

Fencing manufacturers were asked a few questions on certification. Excluding nil responses, there were 45 manufacturers providing responses in 2005, of which 12 (27%) reported that they held a chain of custody certificate.

18 manufacturers recorded input from certified sources, accounting for between 50% and 100% of roundwood consumed by these mills. This represents around 44% of total roundwood consumption by manufacturers reporting data in 2005.

13 manufacturers recorded output sold as certified.

SUMMARY FOR MISCELLANEOUS PRODUCTS

Other miscellaneous products produced from UK roundwood include fuelwood, poles and shavings.

Softwood

Figures for softwood fencing are produced from the surveys of round fencing manufacturers. Other figures have been estimated by the Expert Group on Timber and Trade Statistics (EGTTS).

Table 26: Miscellaneous uses of UK softwood roundwood

	000 green tonnes			
	Fencing	Fuelwood	Other ¹	Total
2001	354	101	53	508
2002	298	101	54	453
2003	275	101	69	445
2004	282	101	79	462
2005	342	101	84	527

¹ Includes shavings, poles and woodwool.

Hardwood

No firm data are available for miscellaneous uses of hardwood. The Expert Group on Timber and Trade Statistics (EGTTS) estimate that a total of around 306 thousand green tonnes are used annually, comprising around 251 thousand green tonnes for fuelwood, 30 thousand green tonnes for round fencing and 25 thousand green tonnes for other uses. This fuelwood estimate for 2005 is 100 thousand green tonnes higher than for previous years.

F: SOFTWOOD EXPORTS

UK softwood exports in 2005 consisted of 560 thousand green tonnes of pulpwood and 145 thousand green tonnes of logs, giving a total of 705 thousand green tonnes of roundwood. The UK also exported 150 thousand tonnes of chips.

Table 27: Summary of softwood exports

	Pulpwood					Logs	Roundwood	Chips
	Scotland	England	Wales	N. Ire	UK	UK	Total UK	UK
2001¹	61	..	61	..
2002¹	123	0	10	..	133	..	133	..
2003¹	187	2	28	..	217	90	307	..
2004²	348	42	57	18	465	145	610	320
2005	446	27	69	18	560	145	705	150

.. Denotes not available

¹ Figures from 2001 to 2003 are GB only; Northern Ireland data not available

² See note on revision (below)

Note on revision

The final column shows exports of wood chips that have been produced by sawmills. These should not be included in total roundwood exports, and should not be part of total deliveries (table 1), because the roundwood producing these chips had already been counted as part of logs going to sawmills. They were incorrectly included in the totals for 2004 published last year, so these totals were overstated by 320 thousand green tonnes. This affected UK Timber Statistics 2004 Tables 1, 2 and 26, Forestry Facts & Figures 2005 Tables 8 and 9, and Forestry Statistics 2005 Tables 2.3 and 3.1. All subsequent publications have been revised.

G. CONVERSION FACTORS

Conversion factors were used in this report to convert between cubic metres (standing, overbark or underbark) and green tonnes (delivered weight, including moisture). These are illustrated in the following diagram (where different factors apply to softwood and hardwood, these are marked SW and HW). Factors are generalised, based on a range of different types of timber and processing methods. They are shown to 3 decimal places to ensure the diagram balances.

Figure 18: Conversion factors between cubic metres and green tonnes

