



# **VISITOR MONITORING TRENDS INDEX REPORT**

**Report on the changes in visitor numbers from 2000 to 2001  
for Forest Enterprise sites**

**May 2003**

**Prepared by:**

Economics & Statistics  
Forestry Group  
Forestry Commission  
Silvan House  
231 Corstorphine Road  
Edinburgh, EH12 7AT  
United Kingdom

**Enquiries:**

Vicky West: 0131 314 6218  
[statistics@forestry.gsi.gov.uk](mailto:statistics@forestry.gsi.gov.uk)

**Website:**

<http://www.forestry.gov.uk/statistics>

# **CONTENTS**

<b>1. INTRODUCTION</b>	<b>2</b>
<b>2. VISITOR NUMBER TRENDS 2000 TO 2001</b>	<b>4</b>
2.1 Forest Enterprise sites	4
2.2 Other Comparable (non-FE) sites	5
2.3 Comparison of changes in visitor numbers for FE and Other Comparable (non-FE) sites	6
<b>3. METHODOLOGY</b>	<b>8</b>
3.1 Forest Enterprise Sites	8
3.2 Other Comparable (non-FE) sites	9
<b>Appendices</b>	
<b>1. Results for English sites</b>	<b>10</b>
<b>2. Results for Scottish sites</b>	<b>13</b>
<b>3. Results for Welsh sites</b>	<b>16</b>

# 1. INTRODUCTION

This paper presents information on the changes in visitor numbers at selected Forest Enterprise (FE) sites between 2000 and 2001. It also compares the changes in visitor numbers at Forest Enterprise sites and Other Comparable (non-FE) sites.

The Visitor Monitoring Trends Index is derived from counts of visits to Forest Enterprise sites which are provided by Forest District offices and Territorial offices. The Trends Index uses monthly readings from a number of sources: vehicle counters, pay and display ticket sales, Forest Drive ticket sales, pedestrian counters, cycle counters and Visitor Centre counters. All sites in Great Britain for which there was enough available data have been included in analyses.

A similar index of visits to comparable non-Forest Enterprise sites is calculated from information provided by the National Tourist Boards for England, Scotland and Wales. We consider the following type of sites to be comparable to a Forest Enterprise site; Visitor Centres, Country Parks, Farms, Gardens and Wildlife attractions.

Section 2 summarises the changes between 2000 and 2001; section 3 outlines the methods used. The location of each Forest District is indicated in Figure 1. More detailed results for each Forest Enterprise site are available in the appendices.

## Foot and Mouth Disease – 2001

2001 saw many closures of Forest Enterprise sites around GB due to the large-scale outbreak of Foot and Mouth disease. Almost all Forest Enterprise sites were affected and were closed for periods ranging from a few days to several months. Similarly many of the non-FE outdoor sites were also affected by the outbreak of Foot and Mouth disease and were subject to closure for a period of time. Sites in England and Wales tended to be closed for longer periods than those in Scotland.

### Contacts:

**Vicky West**, Forestry Commission GB.

[statistics@forestry.gsi.gov.uk](mailto:statistics@forestry.gsi.gov.uk)

**Paddy Harrop**, Forest Enterprise England

[paddy.harrop@forestry.gsi.gov.uk](mailto:paddy.harrop@forestry.gsi.gov.uk)

**Alan Stevenson**, Forestry Commission Scotland

[alan.stevenson@forestry.gsi.gov.uk](mailto:alan.stevenson@forestry.gsi.gov.uk)

**Andy Fryers**, Forest Enterprise Wales

[andy.fryers@forestry.gsi.gov.uk](mailto:andy.fryers@forestry.gsi.gov.uk)

Figure 1: Map of GB indicating the Forest District Boundaries in 2000 / 2001



## 2. VISITOR NUMBER TRENDS 2000 to 2001

### 2.1 Forest Enterprise sites

Analysis indicates that the overall number of visits to Forest Enterprise sites in Great Britain has decreased by over a fifth (20.5 %) from 2000 to 2001. Decreases in visitor numbers were largest in England (22.3 %) and Wales (19.9 %), the countries most affected by the outbreak of Foot and Mouth disease. Visitor numbers in Scotland also decreased between 2000 and 2001, but only by 4.8 %.

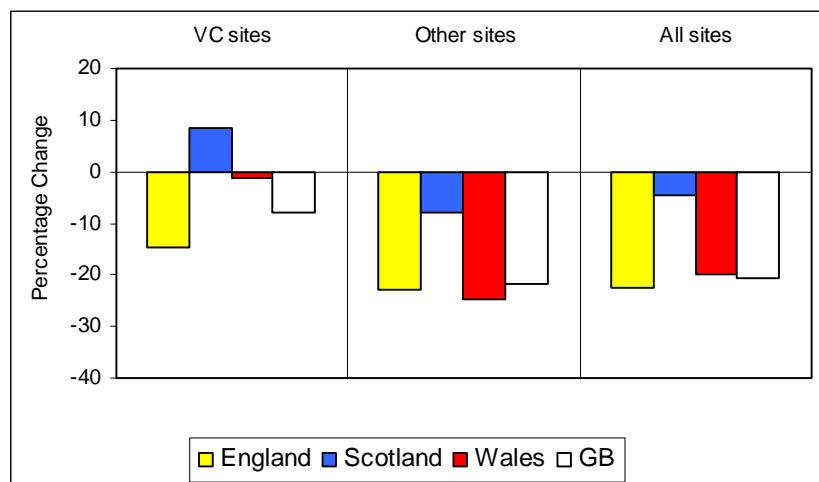
The ‘Other Sites’ seem to be much more affected than Visitor Centre sites in all 3 countries, showing a decrease in Visitor Numbers of 21.7 % overall, compared to only 8.1 % at Visitor Centre Sites. Other Sites in England and Wales show large decreases (22.9 % and 24.6 % respectively), whereas those in Scotland show a decrease of 8.1 %. Visitor Centre sites in Scotland show an increase of 8.5 % between 2000 and 2001, and numbers in England and Wales decreased by 14.8 % and 1.1 % respectively.

Table 1 and Figure 2 show the percentage change in visitor numbers to Forest Enterprise sites from 2000 to 2001. The overall percentage changes for Visitor Centre and Other Sites combined (All sites) and each country combined (GB) are estimated by weighting the individual country (England/Scotland/Wales) and site-type (Visitor Centre/Other) percentage changes in proportion to estimates of total visits to Forest Enterprise sites (See Table 4). A total of 153 FE sites (14 Visitor Centres and 139 Other Sites) were used in this analysis.

**Table 1: % change in visitor numbers at Forest Enterprise Sites 2000 - 2001**

	Visitor Centre sites	Other Sites	All sites
England	-14.8	-22.9	<b>-22.3</b>
Scotland	8.5	-8.1	<b>-4.8</b>
Wales	-1.1	-24.6	<b>-19.9</b>
<b>Great Britain</b>	<b>-8.1</b>	<b>-21.7</b>	<b>-20.5</b>

**Figure 2: % Change in visitor numbers at Forest Enterprise sites 2000 - 2001**



## 2.2 Other Comparable (non-FE) sites

At other sites which are considered comparable to Forest Enterprise (FE) sites, the number of visits in Great Britain decreased by 5.6 % between 2000 and 2001. Interestingly, decreases to visits in Scotland (6.0 %) were more than in England and Wales (5.8 % and 2.2 % respectively), unlike the change in visits at FE sites.

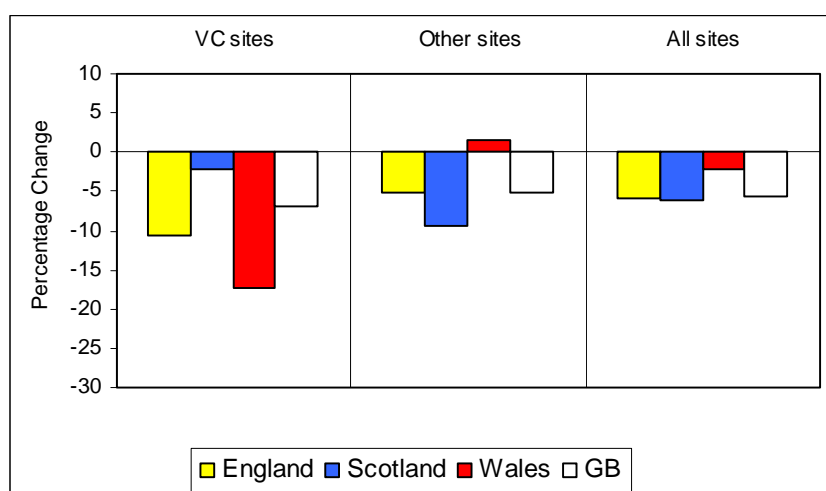
Overall, Visitor Centres at non-FE sites in GB appeared to be more affected by the Foot and Mouth outbreak than Other Sites (7.0 % and 5.3 % respectively). The Visitor Centres in England and Wales were particularly badly affected (decreasing by 10.6 % and 17.3 % respectively). Scottish Visitor Centres did not suffer so badly. However, Other Sites in Scotland seemed particularly badly affected (decreases of 9.5 %), whereas decreases were less severe in England (5.1 %) and visitor numbers in Wales increased (1.6 %).

Table 2 and Figure 3 show the percentage change in visitor numbers at comparable non-FE sites between 2000 and 2001. The overall percentage changes for Visitor Centre and Other Sites combined (All sites) and each country combined (GB) are estimated by weighting the individual country (England/Scotland/Wales) and site-type (Visitor Centre/Other) percentage changes in proportion to the number of sites in each category. A total of 372 non-FE sites (78 Visitor Centres and 294 Other Sites) were used in this analysis.

**Table 2: % change in visitor numbers at comparable non-FE sites 2000 - 2001**

	Visitor Centre sites	Other Sites	All sites
England	-10.6	-5.1	<b>-5.8</b>
Scotland	-2.1	-9.5	<b>-6.0</b>
Wales	-17.3	1.6	<b>-2.2</b>
<b>Great Britain</b>	<b>-7.0</b>	<b>-5.3</b>	<b>-5.6</b>

**Figure 3: % change in visitor numbers at comparable non-FE sites 2000 – 2001**



*NOTE: These figures are not intended to indicate the overall trends in visits to GB attractions, they are designed solely for the comparison with FE trends. 'Visits to Visitor Attractions 2001' estimates that the change in visitor numbers to all attractions in the UK is a decrease of 2 % between 2000 and 2001. The change for each category in the UK is Country Parks (-6 %), Farms (-25 %), Gardens (+3 %), Visitor Centres (-5 %) and Wildlife attractions (-4 %).*

### **2.3 Comparison of changes in visitor numbers for FE and Other Comparable (non-FE) sites**

Visitor numbers at Forest Enterprise sites and Other Comparable (non-FE) sites in GB showed large decreases between 2000 and 2001. This is partly due to the outbreak of Foot and Mouth Disease which resulted in many sites in the countryside being closed to the public, some for a number of months. The decrease at Forest Enterprise sites (20.5 %) was greater than that at the Other Comparable (non-FE) sites (5.6 %).

Whereas Forest Enterprise sites saw largest decreases at sites in England and Wales where Foot and Mouth Disease necessitated the closure of many sites for long periods of time, comparable non-FE sites showed largest decreases in Scotland and England.

Comparison of Figures 2 and 3 shows that Forest Enterprise Other Sites showed much larger decreases in visitor numbers than the Visitor Centres (21.7 % and 8.1 % respectively), whereas Other Comparable (non-FE) sites showed slightly larger decreases at Visitor Centres than Other Sites (7.0 % and 5.3 % respectively).

**Table 3: % change in visitor numbers at FE and other (Non-FE) sites 2000 - 2001**

	FE sites	Non-FE sites
England	-22.3	-5.8
Scotland	-4.8	-6.0
Wales	-19.9	-2.2
<b>Great Britain</b>	<b>-20.5</b>	<b>-5.6</b>



**Figure 4: Box plots showing the distribution of change in visitor numbers at FE and non-FE sites from 2000 to 2001 at sites in England (top), Scotland (middle) and Wales (bottom) for Visitor Centre sites (left) and Other Sites (right)**

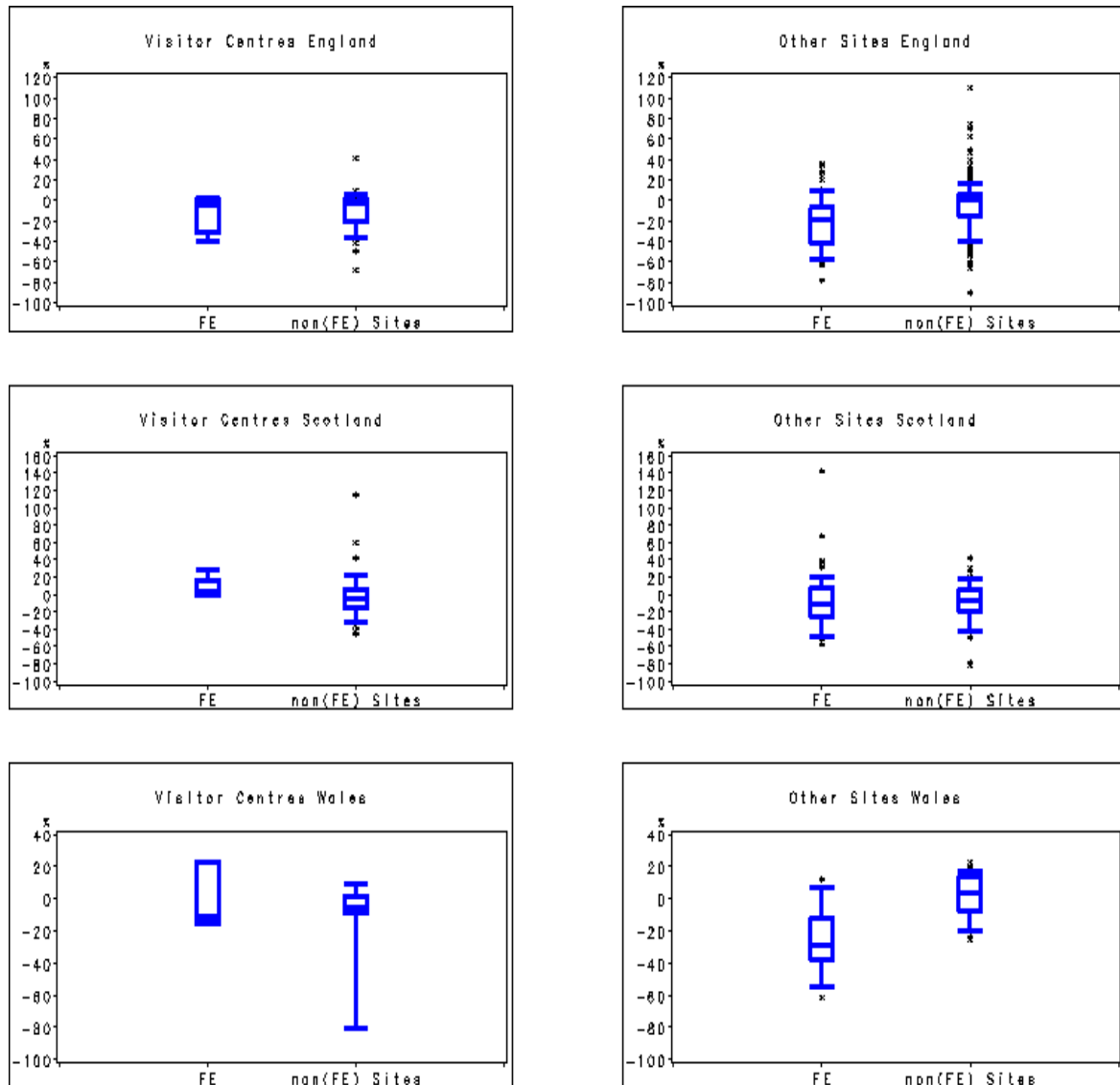


Figure 4 shows the range of percentage changes at Visitor Centre and Other Sites in each country, at FE and non-FE sites. For example the top left plot shows changes at English Visitor Centres for FE and non-FE sites. In the charts, half of the results are in the 'box', and the horizontal line shows the median value. The vertical lines cover most of the other values and the \* symbols represent the extreme 10 % of values at each end of the distribution. The non-Visitor Centre sites show much more variation mainly due to the larger number of sites.

### 3. METHODOLOGY

#### 3.1 Forest Enterprise Sites

##### Trend at each site

For each site, the percentage change is calculated between the readings provided in 2000 and those in 2001. These readings represent the counts recorded by the counters, which may be numbers of people or vehicles. Any month for which there is missing or incorrect data in either year is excluded. Sites were excluded from this analysis if there was less than six months valid data.

##### Trend at Visitor Centre and Other Sites

The trend at sites in each type of location (Visitor Centre, Other Site) in each country (Scotland, England, Wales) were combined, by calculating a simple average of the percentage changes for each of the 6 groups. The percentage changes for all Visitor Centres within each country are given equal weight. Percentage changes for Other Sites within each country are also given equal weight and are taken to be representative of Forest Enterprise sites not included. Smaller sites are given the same weighting as large sites, as these are a proxy for the numerous small sites that have no counter.

##### Trend at all sites in GB

The UK Day Visits Survey suggests that in total there are 50 Million day visits to FE woodland. Trends Index data from previous years has allowed us to estimate the breakdown of visitors to Visitor Centres and non-Visitor Centre sites. We assume that the breakdown of visitors to FE woodland between Scotland, England and Wales is in the proportions 10 %, 85 % and 5 % respectively. This is based on information from the UK Day Visits Survey.

We therefore calculated the trend at all sites in each country and at Visitor Centre and non-Visitor Centre sites in GB by using weights proportional to the visitor numbers given in Table 4.

**Table 4: Estimated number of visitors (millions per year)**

	Visitor Centre sites	Other Sites	All sites <sup>2</sup>
England	3.0	39.5	<b>42.5</b>
Scotland	1.0	4.0	<b>5.0</b>
Wales	0.5	2.0	<b>2.5</b>
<b>Great Britain</b>	<b>4.5</b>	<b>45.5</b>	<b>50.0<sup>1</sup></b>

Note:

1. The estimate of 50 million visitors per year is based on data from the UK Day Visits Surveys
2. Total numbers of visitors by country are based on an estimated 10%, 85%, 5% breakdown of the total for Scotland, England and Wales respectively.

### **Estimates of annual visitor numbers**

Estimates of 12-month visitor numbers to each non-Visitor Centre site (see appendices) were obtained by multiplying counts at each site by an estimate of the average number of visitors per count at each site (E.g. 1 person per pedestrian count). A calibration exercise was carried out in 1997 at some sites to calculate this factor for vehicle counts. Wherever this calibration factor was unavailable, we estimate that there are 2.5 people per car. These full year calibrated totals are comparable between sites, though it must be noted that some sites were open for less than twelve months.

For sites where there was less than 12 months valid data, totals for any missing months were estimated using the average percentage change for that month across all sites within that Forest District (FD) (For example, in September 2001 there was no data for Moors Valley in New Forest FD. This was estimated by decreasing the September 2000 count by 7 % - the average percentage change for September in the New Forest FD). If there was no data in either year in a given month at a given site, we did not estimate the annual total visitor number for that site. If a site was closed due to Foot and Mouth Disease for a period we have assumed a zero visitor count for this period.

Visitor numbers estimated from pay and display tickets assume that all visitors purchase a ticket. Observations have shown that the honesty rate is always below 100 %, so these figures will be underestimates of the true visitor numbers at these sites. We have not calculated annual totals for Visitor Centres since most are closed for a period over the winter months.

### **3.2 Other Comparable (non-FE) sites**

Forest Enterprise sites are compared to other similar non-FE sites, e.g. Visitor Centres, Country Parks, Farms, Gardens, Wildlife Attractions or other countryside attractions. The visitor numbers for such attractions are given in the publication 'Visits to Visitor Attractions 2001', published by the English Tourism Council.

#### **Selection of Other comparable non-FE sites**

Sites were selected from this report which fell into the categories of Visitor Centre, Country Park, Farm, Garden, Wildlife Attraction or other countryside attraction. Only the sites which we had used for previous Trends Index reports were included.

#### **Trend at each site and at Visitor Centre and Other Sites in each country**

For each site, the percentage change is calculated between the visitor numbers in 2000 and those in 2001. These numbers either represent manual counts, analysis of ticket sales, mechanical counters or estimates based on a sample count. The trend at sites in each type of location (Visitor Centre, Other Site) in each country (Scotland, England, Wales) were combined, by calculating a simple average of the percentage changes for each of the 6 groups.

#### **Trend at All sites and in GB**

The overall percentage changes for Visitor Centre and Other Sites combined (All sites) and each country combined (GB) are estimated by weighting the individual country (England/Scotland/Wales) and site-type (Visitor Centre/Other) percentage changes in proportion to the number of sites in each category.

## TRENDS INDEX 2000-2001

Percentage change, valid counts and full year visitor estimates at Visitor Centre and other sites

Visitor Centre Sites			Table A1.1			
Forest District	Location	Cat.	Valid months	Valid Total <sup>1</sup>		% change
				2000	2001	
Kielder	Kielder Castle VC	C (ME)	9	28,217	27,235	-3%
Kielder	Hamsterley VC	C (H)	11	25,870	18,014	-30%
Lakes	Grizedale VC	VC	12	44,406	26,341	-41%
NYM	Dalby VC	VC	7	44,154	44,117	0%
NYM	Pinchinthorpe VC	VC	12	16,111	15,136	-6%
SE England	Queen Elizabeth CP VC	VC	11	185,081	189,558	2%
West Midlands	Birches Valley FC	VC	12	89,877	66,801	-26%
<b>% change 2000-2001 for Visitor Centre sites in England:</b>						<b>-14.8%</b>

## Category key

C=Counter, ME=Magic Eye, H=Hand, VC=Visitor Centre

## Notes

1. Total count registered by the counter in the valid months. This represents the number of people recorded passing the counter. No estimate was made for other months that the Visitor Centre was open (some Visitor Centres were not open for 12 months).

Other sites			Table A1.2						
Forest District	Location	Cat.	Valid months	Valid Total <sup>1</sup>		% change	Visitors per count <sup>3</sup>	Visitors per year <sup>2</sup>	
				2000	2001			2000	2001
East Anglia	Arboretum	Veh	8	5,114	4,409	-14%	2.2	16,150	14,597
East Anglia	High Lodge	Veh	8	39,554	50,479	28%	3.0	—	—
East Anglia	Lynford Stag	Veh	12	24,071	22,104	-8%	2.4	57,770	53,050
East Anglia	Lynford (Red) Stag	P&D	8	3,914	3,018	-23%	2.4	—	—
East Anglia	St Helens	P&D	6	3,011	2,541	-16%	<u>2.5</u>	—	—
East Anglia	High Lodge	FDT	12	42,356	36,681	-13%	3.0	127,068	110,043
Forest of Dean	Beechenhurst	Veh	10	65,668	37,105	-43%	<u>2.5</u>	182,298	118,289
Forest of Dean	Symonds Yat	Veh	12	70,478	38,054	-46%	<u>2.5</u>	176,195	95,135
Forest of Dean	Beechenhurst	P&D	12	25,177	16,259	-35%	<u>2.5</u>	62,943	40,648
Forest of Dean	Symonds Yat	P&D	12	32,397	15,439	-52%	<u>2.5</u>	80,993	38,598
Forest of Dean	Cycle Centre	P&D	12	10,641	6,351	-40%	<u>2.5</u>	26,603	15,877
Kielder	Simonside	Veh	9	7,066	6,106	-14%	<u>2.5</u>	23,598	17,881
Kielder	Hamsterley	Veh	12	68,970	49,475	-28%	<u>2.5</u>	172,425	123,688
Kielder	Chopwell	Veh	12	39,961	35,006	-12%	<u>2.5</u>	99,903	87,515
Kielder	Hepburn	Veh	9	4,305	1,612	-63%	<u>2.5</u>	13,125	4,979
Kielder	Kielder Castle	Veh	12	8,091	6,763	-16%	2.9	23,464	19,613
Kielder	Forest Drive	Veh	12	29,626	12,270	-59%	2.8	82,953	34,356
Kielder	Bull Crag	Veh	11	3,034	4,129	36%	2.8	9,626	12,391
Kielder	Kielder Castle CP	P&D	11	5,063	2,663	-47%	2.9	14,857	7,859
Kielder	Kielder	FDT	10	8,447	3,186	-62%	<u>2.5</u>	22,160	9,065
Kielder	Hamsterley	FDT	12	32,596	24,575	-25%	<u>2.5</u>	81,490	61,438
Lakes	Whinlatter Main	Veh	8	22,982	12,584	-45%	<u>2.5</u>	75,140	49,887
Lakes	Noble Knott	Veh	8	3,281	1,336	-59%	<u>2.5</u>	10,723	5,965
Lakes	Whinlater Main	P&D	12	17,681	11,827	-33%	<u>2.5</u>	44,203	29,568
Lakes	Grizedale Main	P&D	12	25,799	17,794	-31%	<u>2.5</u>	64,498	44,485
Lakes	Grizedale Old Hall	P&D	12	7,651	7,020	-8%	<u>2.5</u>	19,128	17,550
Lakes	Grizedale Kennels	P&D	12	3,703	2,011	-46%	<u>2.5</u>	9,258	5,028
New Forest	Bolton's Bench	Veh	12	78,830	47,898	-39%	2.4	189,192	114,955
New Forest	Blackwater	Veh	11	31,165	30,711	-1%	2.6	88,764	87,033
New Forest	Bolderwood (E)	Veh	11	22,286	18,386	-17%	2.9	66,123	54,343
New Forest	Bolderwood (W)	Veh	12	38,696	25,843	-33%	2.8	108,349	72,360
New Forest	Moors Valley	Veh	11	160,981	151,683	-6%	2.9	505,070	475,383
New Forest	Beachern Lane	Cyc	12	42,686	29,215	-32%	<u>1.0</u>	42,686	29,215
New Forest	Rhinefield Dr.	Cyc	11	16,130	12,977	-20%	<u>1.0</u>	17,541	14,287
New Forest	Denny Route	Cyc	11	16,027	6,391	-60%	<u>1.0</u>	17,199	7,122
New Forest	Denny non-route	Cyc	11	1,714	825	-52%	<u>1.0</u>	1,885	932
New Forest	Hampton Ridge	Cyc	11	6,446	6,238	-3%	<u>1.0</u>	7,138	6,669
New Forest	Longslade Bottom	Cyc	6	8,912	4,466	-50%	<u>1.0</u>	—	—
New Forest	Tom's Lane	Cyc	6	934	608	-35%	<u>1.0</u>	—	—

cont. overleaf

Other sites			Table A1.2 cont.						
Forest District	Site	Cat.	Valid months	Valid Total <sup>1</sup>		% change	Visitors per count <sup>3</sup>	Visitors per year <sup>2</sup>	
				2000	2001			2000	2001
Northants	Salcey	Veh	11	29,773	26,089	-12%	2.0	64,666	57,582
Northants	Wakerley	Veh	12	16,714	20,716	24%	2.6	43,456	53,862
Northants	Southey	Veh	12	39,910	32,647	-18%	2.0	79,820	65,294
North York Moors	Pexton	Veh	12	206,282	194,979	-5%	<u>2.5</u>	515,705	487,448
North York Moors	Bickley	Veh	12	91,703	59,631	-35%	<u>2.5</u>	229,258	149,078
North York Moors	Dalby	Veh	12	164,535	133,555	-19%	<u>2.5</u>	411,338	333,888
North York Moors	May Beck	Veh	12	13,337	2,966	-78%	<u>2.5</u>	33,343	7,415
North York Moors	Clay Bank	Veh	12	37,656	27,814	-26%	<u>2.5</u>	94,140	69,535
North York Moors	Guisborough	Veh	8	33,112	18,832	-43%	<u>2.5</u>	125,355	87,058
North York Moors	Newtondale	Veh	12	25,545	14,800	-42%	<u>2.5</u>	63,863	37,000
North York Moors	White Horse Bank	Veh	12	30,996	26,000	-16%	<u>2.5</u>	77,490	65,000
North York Moors	Newgate Bank	Veh	9	9,232	8,909	-3%	<u>2.5</u>	23,080	22,273
North York Moors	Newtondale	FDT	12	20,995	17,673	-16%	<u>2.5</u>	52,488	44,183
North York Moors	Dalby	FDT	12	100,809	91,305	-9%	<u>2.5</u>	252,023	228,263
North York Moors	Dalby	FDT	12	52,888	47,222	-11%	<u>2.5</u>	132,220	118,055
Peninsula	Eggesford	Veh	12	23,285	8,598	-63%	2.5	58,213	21,495
Peninsula	Cardinham	P&D	12	9,173	5,919	-35%	2.7	24,767	15,981
Sherwood	Forest Centre	Veh	7	42,891	40,709	-5%	<u>2.5</u>	227,795	195,824
Sherwood	Forest Centre	P&D	12	40,137	48,158	20%	<u>2.5</u>	100,343	116,960
Sherwood	Blidworth Bottoms	Veh	9	47,934	49,451	3%	<u>2.5</u>	233,597	181,650
Sherwood	Thieves Wood	Veh	12	120,786	114,116	-6%	<u>2.5</u>	301,965	285,290
Sherwood	Longdale Lane	Veh	6	13,881	15,167	9%	<u>2.5</u>	101,126	111,472
Sherwood	Rigg Lane (Tower)	Veh	10	55,824	62,235	11%	<u>2.5</u>	166,273	180,532
Sherwood	Derbyshire Bridge	Veh	8	49,072	32,513	-34%	<u>2.5</u>	148,711	111,260
Sherwood	The Street	Veh	10	88,724	74,773	-16%	<u>2.5</u>	255,327	220,478
West Midlands	Cannock	Veh	12	57,370	45,459	-21%	<u>2.5</u>	143,425	113,648
West Midlands	Wyre	P&D	12	28,620	30,177	5%	<u>2.5</u>	71,550	75,443
Westonbirt	Westonbirt	Ped	12	156,773	209,929	34%	<u>1.0</u>	156,773	209,929
<b>% change 2000-2001 for other sites in England:</b>						<b>-22.9%</b>			

**Category key**

Veh=Vehicle Counter, P&D=Pay and Display, Ped=Pedestrian counter, FDT=Forest Drive Tickets, Cyc=Cycle

Notes

1. Total count registered by the counter in the valid months. This may represent the number of people or vehicles recorded passing the counter
2. Estimated number of visitors for the year. A dash indicates that no full-year estimate was made. See methodology section 3.1
3. Underlined figures in italics represent estimates. Other figures come from calibration exercises undertaken in 1997

## TRENDS INDEX 2000-2001

## Percentage change, valid counts and full year visitor estimates at Visitor Centres and other sites

Visitor Centre sites			Table A2.1			
Forest District	Location	Cat.	Valid months	Valid Total <sup>1</sup>		% change
				2000	2001	
Dornoch	Ferrycroft Cside Centre	C(ME)	7	11,409	11,447	0%
Galloway	Kirroughtree VC	VC	7	18,326	23,525	28%
Inverness	Glenmore VC	C(ME)	12	68,380	69,753	2%
Tay	Queens View Shop	C(ME)	8	122,935	127,020	3%
<b>% change 2000-2001 for Visitor Centre in Scotland:</b>						<b>8.5%</b>

## Category key

VC=Visitor Counter, C=Counter, ME=Magic Eye
---

## Notes

1. Total count registered by the counter in the valid months. This represents the number of people recorded passing the counter. No estimate was made for other months that the Visitor Centre was open (some Visitor Centres were not open for 12 months).

Other sites			Table A2.2						
Forest District	Location	Cat.	Valid months	Valid Total <sup>1</sup>		% change	Visitors per count <sup>3</sup>	Visitors per year <sup>2</sup>	
				2000	2001			2000	2001
Ae	Dalbeattie	Veh	10	12,678	10,257	-19%	1.8	28,649	22,441
Ae	Doach	Veh	10	6,132	5,844	-5%	1.7	12,810	9,935
Ae	Mabie	Veh	10	25,448	27,262	7%	<u>2.5</u>	—	—
Ae	Mabie	Ped	10	68,147	51,898	-24%	<u>1.0</u>	74,849	60,076
Scottish Borders	Glentress	Veh	11	23,727	26,059	10%	2.1	55,372	59,262
Scottish Borders	Cardrona	Veh	12	10,161	4,393	-57%	2.2	22,353	9,664
Scottish Borders	Craik	Veh	12	8,707	4,297	-51%	<u>2.5</u>	21,768	10,741
Scottish Borders	Lindinney	Veh	11	6,399	6,295	-2%	<u>2.5</u>	17,315	16,815
Scottish Borders	Thornielee	Veh	11	6,837	5,771	-16%	<u>2.5</u>	18,324	15,436
Scottish Borders	Glentress	Ped	11	20,737	20,958	1%	<u>1.0</u>	22,375	22,299
Scottish Borders	The Pirn	Ped	11	13,567	5,813	-57%	<u>1.0</u>	14,417	6,509
Buchan	Bin Car Park	Veh	7	22,917	20,500	-11%	1.3	—	—
Buchan	Back o Bennachie	Veh	8	22,537	26,806	19%	2.2	—	—
Buchan	Donview East	Veh	7	12,506	11,859	-5%	2.2	—	—
Buchan	Donview West	Veh	7	6,835	4,462	-35%	2.4	—	—
Cowal & Trossachs	QEFP	Veh	8	14,950	17,166	15%	<u>2.5</u>	—	—
Cowal & Trossachs	Milton	Veh	9	8,299	9,511	15%	<u>2.5</u>	—	—
Cowal & Trossachs	Ben Venue	Ped	9	14,784	10,329	-30%	<u>1.0</u>	—	—
Cowal & Trossachs	Ben Lomond	Ped	8	14,651	19,410	32%	<u>1.0</u>	—	—
Dornoch	Shin Falls Long Walk	Ped	8	2,527	6,131	143%	<u>1.0</u>	5,158	8,887
Dornoch	Ferrywood walk	Ped	7	8,183	11,390	39%	<u>1.0</u>	15,818	19,490
Fort Augustus	Dog Falls	Veh(Pn)	12	8,584	14,458	68%	2.5	21,460	36,145
Fort Augustus	Beinn a'Mheadhoin	Veh(Pn)	12	3,267	1,701	-48%	2.6	8,494	4,423
Fort Augustus	R Affric	Veh(Pn)	12	12,199	16,719	37%	2.6	31,717	43,469
Galloway	Kirroughtree	Veh	7	23,582	11,809	-50%	2.8	—	—
Galloway	Stroan Bridge	Veh	7	23,918	10,236	-57%	2.7	—	—
Galloway	Bruce's Stone	Veh	7	14,345	10,623	-26%	2.7	—	—
Inverness	Rogie Falls	Ped	7	29,670	24,987	-16%	<u>1.0</u>	56,052	54,052
Inverness	Craig Phadraig (Top)	Veh	6	6,400	3,199	-50%	<u>2.5</u>	—	—
Kincardine	Kirkhill Main	Veh	12	19,890	21,952	10%	2.0	39,780	43,904
Kincardine	Tyrebagger P	Veh	12	13,051	9,241	-29%	1.8	23,492	16,634
Kincardine	Tyrebagger 1	Veh	9	9,697	8,164	-16%	1.5	14,546	12,246
Kincardine	Countesswells	Veh	12	66,936	64,542	-4%	1.5	100,404	96,813
Kincardine	Scolty	Veh	12	24,017	19,755	-18%	2.4	57,641	47,412
Kincardine	Shooting Greens	Veh	12	7,341	7,497	2%	2.5	18,353	18,743
Kincardine	Drumtochty FC	Veh	12	711	366	-49%	2.3	1,635	842
Kincardine	Drumtochty Cars	Veh	12	7,497	5,608	-25%	2.3	17,243	12,898
Kincardine	Drumtochty	Veh	12	6,785	5,241	-23%	2.3	15,606	12,054

cont. overleaf



Other sites			Table A2.2 cont						
Forest District	Location	Cat.	Valid months	Valid Total <sup>1</sup>		% change	Visitors per count <sup>3</sup>	Visitors per year <sup>2</sup>	
				2000	2001			2000	2001
Lochaber	Linnhe	Veh(IR)	6	32,250	27,115	-16%	<u>2.5</u>	—	—
Lochaber	Ciste Dubh	Veh(Pn)	11	4,580	4,107	-10%	<u>2.5</u>	12,485	10,812
Lochaber	Alt Na Calliche	Veh(Pn)	11	3,958	3,882	-2%	<u>2.5</u>	11,065	10,321
Lochaber	Inchree	Ped	12	26,695	21,899	-18%	1.0	26,695	21,899
Lorne	Sutherlands Grove	Veh(Pn)	10	9,320	7,872	-16%	2.5	—	—
Moray	Roseisle	Veh	11	25,028	28,615	14%	2.5	71,585	80,555
Moray	Culbin -Wellhill	Veh	11	13,214	10,723	-19%	2.5	36,814	26,808
Moray	Culbin - Cloddymoss	Veh	12	14,771	10,580	-28%	1.8	26,588	19,044
Moray	Winding Walks CP	Veh	12	25,476	24,111	-5%	2.3	58,595	55,455
Moray	Quarry wood (1)	Veh	11	15,891	16,811	6%	<u>2.5</u>	44,255	48,202
Moray	Torrieston	Veh	6	2,946	3,164	7%	1.9	10,251	9,164
Moray	Roseisle	P&D	10	4,070	4,675	15%	2.5	10,900	12,090
Tay	Queens View	Veh	8	48,079	41,494	-14%	<u>2.5</u>	—	—
Tay	Kinshaldy	Veh	12	33,194	31,846	-4%	<u>2.5</u>	82,985	79,615
Tay	Kilvrecht	Cs	7	2,099	1,842	-12%	<u>1.0</u>	—	—
Tay	Queens View	P&D	6	21,856	22,752	4%	<u>2.5</u>	—	—
Tay	Glen Doll	P&D	12	22,641	16,969	-25%	<u>2.5</u>	56,603	42,423
<b>% change 2000 - 2001 for other sites in Scotland:</b>						<b>-8.1%</b>			

#### Category key

Veh=Vehicle Counter,Ped=Pedestrian Counter,Pn=Pneumatic,ME=Magic Eye,P&D=Pay and Display,Cs=Campsite

#### Notes

1. Total count registered by the counter in the valid months. This may represent the number of people or vehicles recorded
2. Estimated number of visitors for the year. A dash indicates that no full year estimate was made. See methodology section 3.1
3. Underlined figures in italics represent estimates. Other figures come from calibration exercises undertaken in 1997

## TRENDS INDEX 2000-2001

## Percentage change, valid counts and full year visitor estimates at Visitor Centres and other sites

Forest District	Location	Cat.	Valid	Valid Total		% change
			Months	2000	2001	
Canolbarth	Nant yr Arian VC	VC	10	28,105	34,353	22%
Dolgellau	Coed Y Brenin VC	VC	12	34,129	30,385	-11%
Dolgellau	Coed y Brenin cafe	VC	12	40,434	34,559	-15%
<b>% change 2000-2001 for Visitor Centre sites in Wales:</b>						<b>-1.1%</b>

Forest District	Location	Cat.	Valid	Valid Total <sup>2</sup>		% change	Visitors per count <sup>4</sup>	Visitors per year <sup>3</sup>	
			months	2000	2001			2000	2001
Canolbarth	Nant yr Arian	Veh(Pn)	8	13,383	7,971	-40%	3.1	87,833	68,654
Canolbarth	Black Covert	Veh(Pn)	12	8,172	6,316	-23%	2.5	20,430	15,790
Canolbarth	The Arch	Veh(Pn)	10	8,273	3,205	-61%	<u>2.5</u>	23,651	10,040
Canolbarth	Hafod	Veh(Pn)	11	8,973	4,068	-55%	<u>2.5</u>	23,563	11,348
Canolbarth	Hafren	Veh(Pn)	12	5,814	4,723	-19%	<u>2.5</u>	14,535	11,808
Canolbarth	Ty'n Y Bedw	Veh(Pn)	12	1,998	2,245	12%	<u>2.5</u>	4,995	5,613
Dolgellau	Coed y Brenin	Veh(Pn)	10	21,112	20,611	-2%	<u>2.5</u>	66,139	66,928
Dolgellau	Coed Y Brenin VC	P&D	11	17,665	18,693	6%	<u>2.5</u>	44,641	48,520
Dolgellau	Tan y Coed	P&D	11	1,746	1,777	2%	<u>2.5</u>	4,448	4,523
Dolgellau	M/B Trail	Cyc	12	18,758	16,356	-13%	1.0	18,758	16,356
Llanwrst	Newborough Beach	Veh(Pn)	12	50,786	33,576	-34%	2.9	147,279	97,370
Llanwrst	Newb-Llyn Parc Mawr	P&D	12	3,950	2,823	-29%	2.2	8,690	6,211
Llanwrst	Lyn Geirionydd	P&D	12	4,296	2,760	-36%	3.1	13,318	8,556
Llanwrst	Caen y Coed	P&D	12	2,087	1,295	-38%	2.7	5,635	3,497
Llanwrst	Llyn Crafnant	P&D	12	3,329	2,201	-34%	2.7	8,988	5,943
Llanwrst	Coed Aber	P&D	12	6,205	3,730	-40%	3.2	19,856	11,936
Llanwrst	Moel Famau	P&D	12	13,623	11,511	-16%	2.4	32,695	27,626
<b>% change 2000-2001 of other sites in Wales:</b>						<b>-24.6%</b>			

## Category key

VC=Visitor Counter, Veh=Vehicle Counter, Pn=Pneumatic, P&amp;D=Pay and Display Tickets, Cyc=Cycle Counter

## Notes

- Total registered by the counter in the valid months. This represents the number of people recorded passing the counter. No estimate was made for other months that the Visitor Centre was open (some Visitor Centre were not open for 12 months).
- Total count registered by the counter in the valid months. This may represent the number of people or vehicles recorded passing the counter
- Estimated number of visitors for the year. See methodology section 3.1
- Underlined figures in italics represent estimates. Other figures come from calibration exercises undertaken in 1997