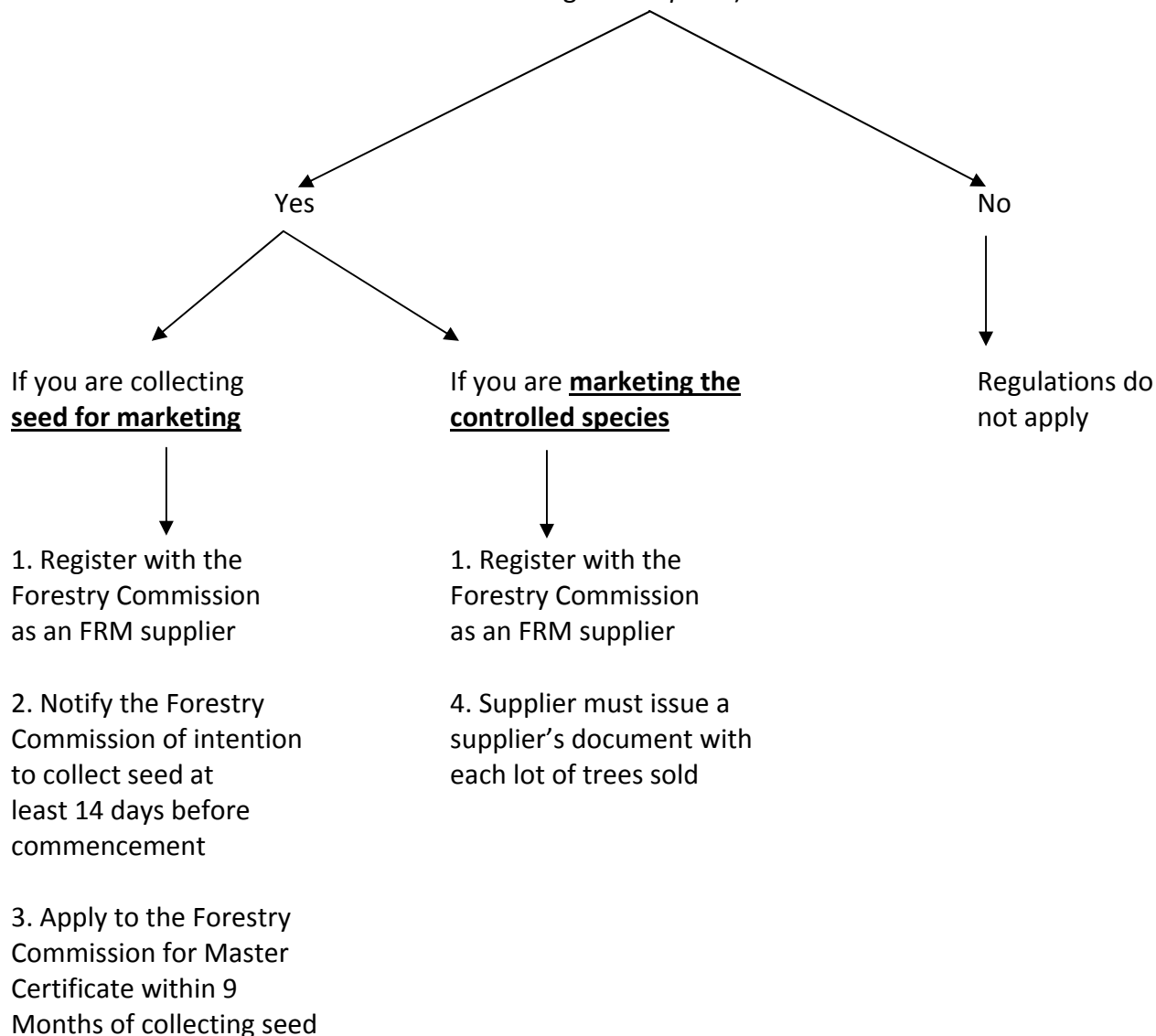


The Forest Reproductive Material (Great Britain) Regulations 2002

Flow chart showing required actions for seed collectors and tree suppliers under the Regulations

Is the tree or hybrid you are going to **collect seed from** or **market** one of the 46 controlled species (plus the genus *Populus*).



Notes:

1. Complete form FRM 6
2. Complete form FRM 7
3. Complete one of the following FRM 4 (a, b, c or d)
4. Complete 'Supplier document' template

All FRM forms are available to download from our website www.forestry.gov.uk/frm

Direct link to FRM forms and templates: <http://www.forestry.gov.uk/forestry/infd-7m9dn3>