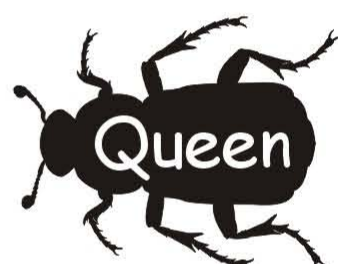




Word Challenge



Try to put the 'minibeast words' into the spaces to complete the correct statement.



Any minibeast with six legs is called an _____.

_____ belong to the same family as crabs and lobsters.

_____ have rows of bristles on their bodies to help them move.

The head of an ant colony is called a _____.

A _____ has one pair of legs per body segment, while a _____ has two pairs of legs per segment.

Spiders belong to a group of minibeasts called _____.

A _____ moves around on one big muscle that acts as a foot.

