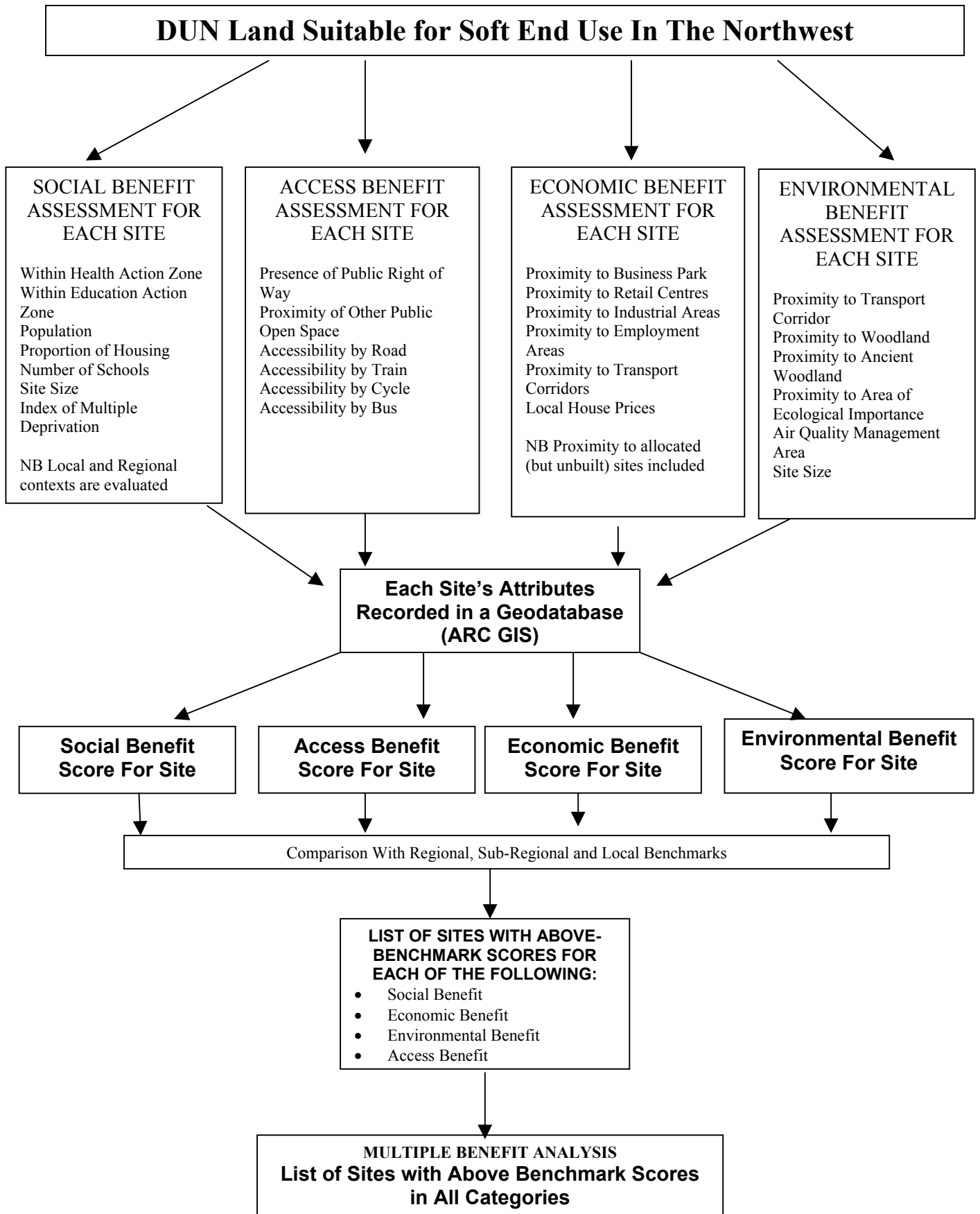


Summary of PBRs Methodology



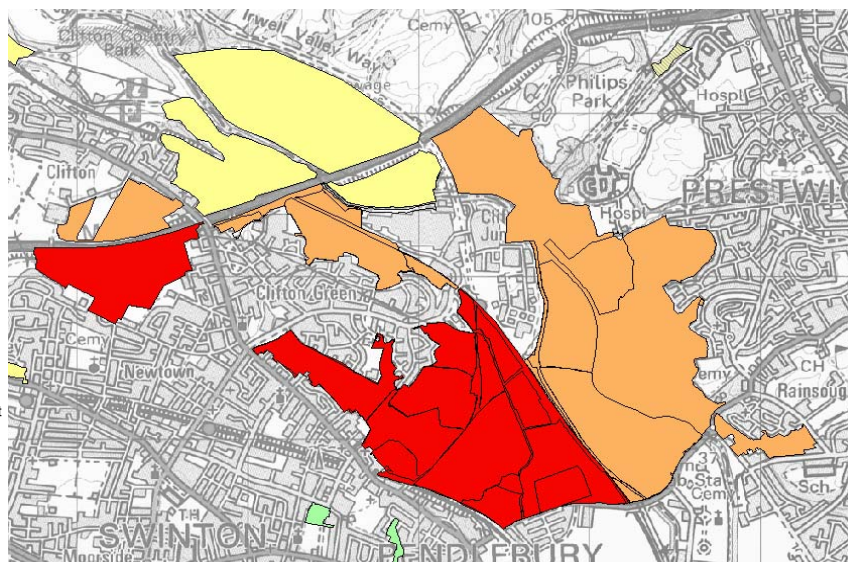
The Public Benefit Recording System (PBRs):

- provides a policy and decision-making framework for investing public monies in the creation of new soft end-uses on Derelict, Underused and Neglected Land (DUNL)
- is a tool to identify those sites on which regeneration projects can make the greatest contribution to social, economic and environmental issues in their locality.
- can be used to assess and balance competing agendas and priorities. Thus sustainable 'joined up strategies' and shared vision within project partnerships and communities can be created.
- awards scores for attributes that would benefit should regeneration take place (See table below). The higher the score the greater the potential benefit.
- multiple benefit analysis considers whether a site is situated in a neighbourhood with above average potential to benefit in a combination of categories (environmental, economic, social and/or public access to green space benefits). **'Red'** sites are those with above average scores in all four categories compared with other DUN sites within the Sub Regional Partnership Area.

	Social Benefit Category	Public Access Benefit Category	Economic Benefit Category	Environmental Benefit Category
	Scores			
	Scores	Scores	Scores	Scores
Attribute 1	XXX	XXX	XXX	XXX
Attribute 2	XXX	XXX	XXX	XXX
Attribute 3	XXX	XXX	XXX	XXX
Attribute 4	XXX	XXX	XXX	XXX
Attribute 5	XXX	XXX	XXX	XXX
Attribute 6	XXX	XXX	XXX	XXX
Attribute 7	XXX	XXX	XXX	XXX
Attribute 8	XXX	XXX	XXX	XXX
	Total Social Benefit Score Out of XXX	Total Public Access Benefit Score Out of XXX	Total Economic Benefit Score Out of XXX	Total Environmental Benefit Score Out of XXX

Number of categories with above average scores
(Categories include Social, Economic, Environmental and Public Access Benefits)

- 4 **'Red'** sites - Above average potential benefit in all four categories
- 3
- 2
- 1
- 0 **'Blue'** sites above average potential benefit in no categories. There are no **'Blue'** sites within the LIVIA Complex



Map Background © 2003 Crown Copyright. All rights reserved Forestry Commission [100025498]