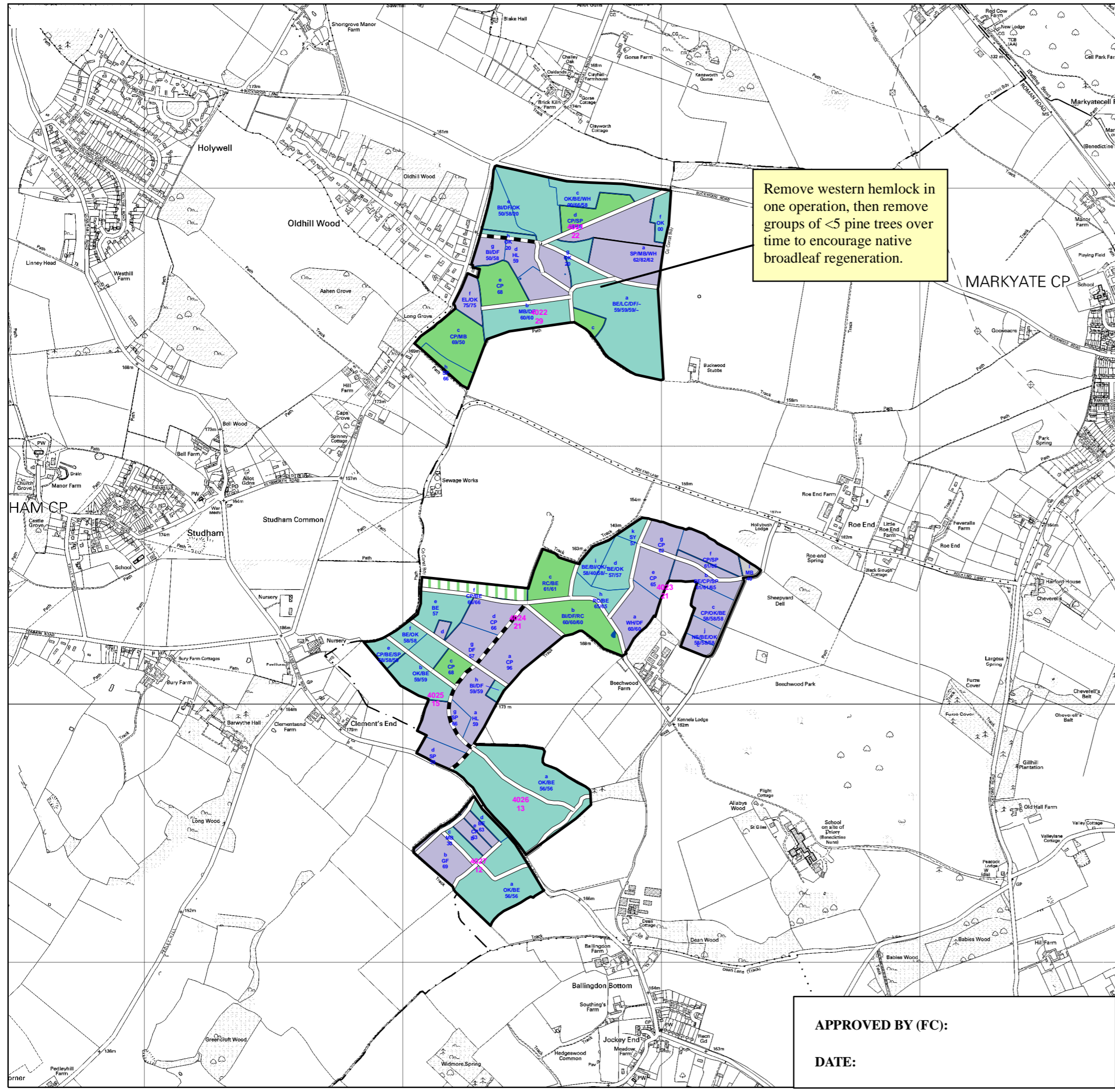


# South East England Forest District

## Dedmansey and Great Bradwin's

### Habitat Restoration and Felling Map

Remove western hemlock in one operation, then remove groups of <5 pine trees over time to encourage native broadleaf regeneration.



#### Low Impact Silvicultural Systems Specific to this Plan (Remove a maximum of 50% of the canopy in any one operation)

- Remove conifer in a series of operations using the Group Selection System, leaving selected conifer trees for raptors.
- Remove any conifer in one operation, leaving selected conifer trees for raptors. Manage broadleaf woodland using the Uniform Shelterwood System to encourage young native broadleaf trees to become established under the overhead shelter of existing trees.
- Manage broadleaf woodland using the Group Shelterwood System to allow young native broadleaf trees to become established under the side shelter of existing trees.
- Coppice woodland on a rotation.
- Select trees for thinning, felling & pruning on an individual basis to enhance the recreation or conservation value of this area.
- Minimum intervention woodland (Natural Reserve).
- Permanent open space with scattered trees (<20%).

#### Clearfell

- 2002-2006
- 2007-2011
- 2012-2016
- 2017-2021
- 2022-2026
- 2027-2031
- 2032-2036
- 2037-2041
- Beyond 2042

#### Remove conifer in one operation to leave at least 40% broadleaf cover

- 2002-2006
- 2007-2011
- 2012-2016
- 2017-2021
- 2022-2026
- 2027-2031
- 2032-2036
- 2037-2041
- Beyond 2042

- Forest road
- Rides and tracks
- Watercourse
- Open water
- Compartments
- Sub-compartments

APPROVED BY (FC):  
DATE:

Produced by the Planning Team July 2006  
This map is based upon Ordnance Survey material with the permission of Ordnance Survey on behalf of the Controller of Her Majesty's Stationary Office ©Crown Copyright. Unauthorised reproduction infringes Crown Copyright and may lead to prosecution or civil proceedings. Forestry Commission, GD272388, 2003.