

Parkwood Bassenthwaite Forest Design Spring 2009 Review – Computer Perspectives



The computer images contained in this section try to provide perspective representations of the Forest Design Plan. They show the Future Woodland Management and Future Woodland Species proposals from a number of different viewpoints. Please note that the Future Woodland Species perspective is meant to represent the forest as it might look in 2030.

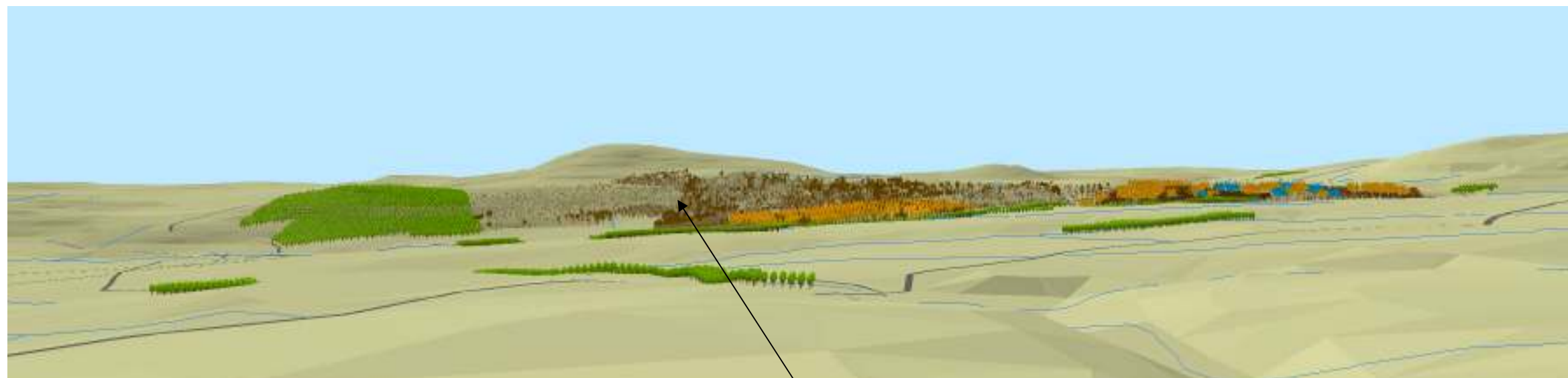
Computer Perspectives



Key	
Fell 2012 to 2016	■
Fell 2022 to 2026	■
Fell 2032 to 2036	■
Continuous Cover	■

Future Woodland Management Viewed in 2009

Harsh boundaries will be improved following felling in the period 2012-2016



Key	
Native Broadleaf	■
Larch	■
Mixed Conifer	■
Private Woodland	■

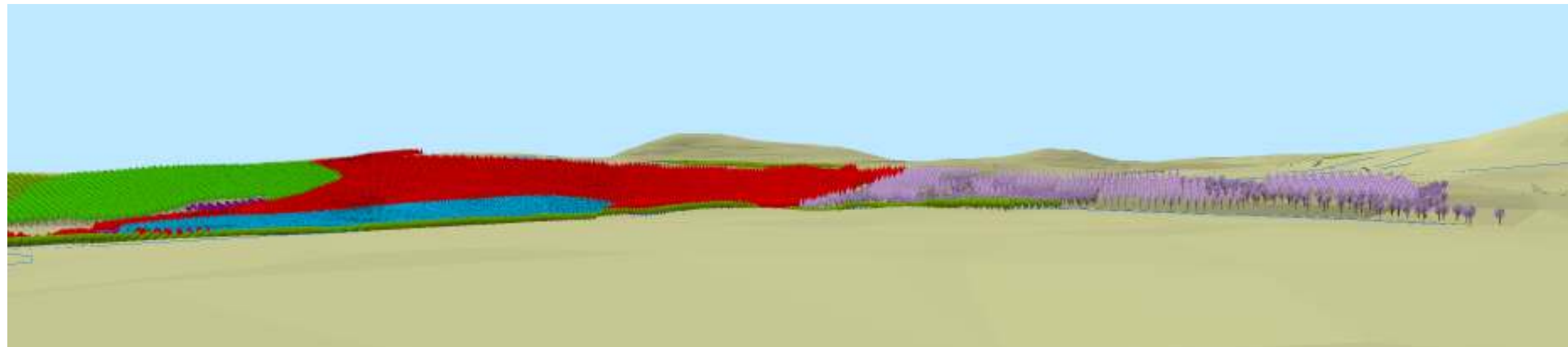
Future Woodland Species Viewed in 2030

Continued growth of existing mature broadleaves & advanced regeneration of native species is expected following conifer removal.

Looking north-west from Barkbeth

North West England Forest District
Parkwood
Bassenthwaite
 Forest Design Plan

Computer Perspectives



Key	
Fell 2012 to 2016	■
Fell 2022 to 2026	■
Fell 2032 to 2036	■
Continuous Cover	■

Future Woodland Management Viewed in 2009



Key	
Native Broadleaf	■
Larch	■
Mixed Conifer	■
Private Woodland	■

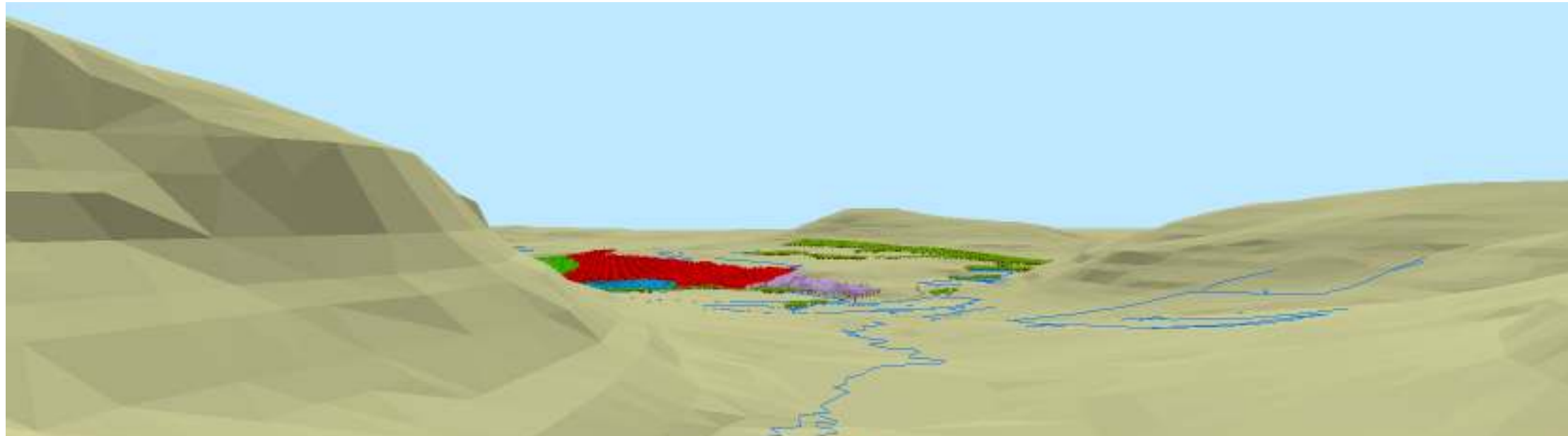
Future Woodland Species Viewed in 2030

Gradual removal of conifers in this area will see proportions alter to favour broadleaves which will grow into the spaces opened up. Less than 10% conifers may be retained for structural & species diversity.

Looking north-west from Peter House Farm

North West England Forest District
Parkwood
Bassenthwaite
 Forest Design Plan

Computer Perspectives



Key	
Fell 2012 to 2016	■
Fell 2022 to 2026	■
Fell 2032 to 2036	■
Continuous Cover	■

Future Woodland Management Viewed in 2009



Key	
Native Broadleaf	■
Larch	■
Mixed Conifer	■
Private Woodland	■

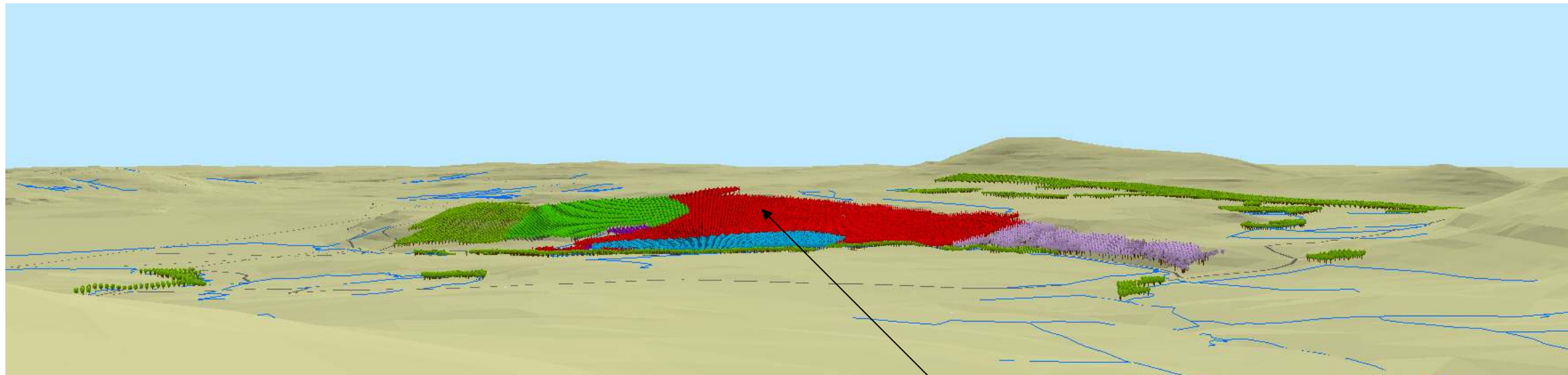
Future Woodland Species Viewed in 2030

The increased presence of broadleaves is much more in keeping with the wider landscape.

Looking north-west further afield from Whitewater Dash Waterfall

North West England Forest District
Parkwood
Bassenthwaite
 Forest Design Plan

Computer Perspectives



Key	
Fell 2012 to 2016	■
Fell 2022 to 2026	■
Fell 2032 to 2036	■
Continuous Cover	■

Future Woodland Management Viewed in 2009

Existing broadleaves within the woodland will reduce the impact of this felled area on the landscape.



Key	
Native Broadleaf	■
Larch	■
Mixed Conifer	■
Private Woodland	■

Future Woodland Species Viewed in 2030

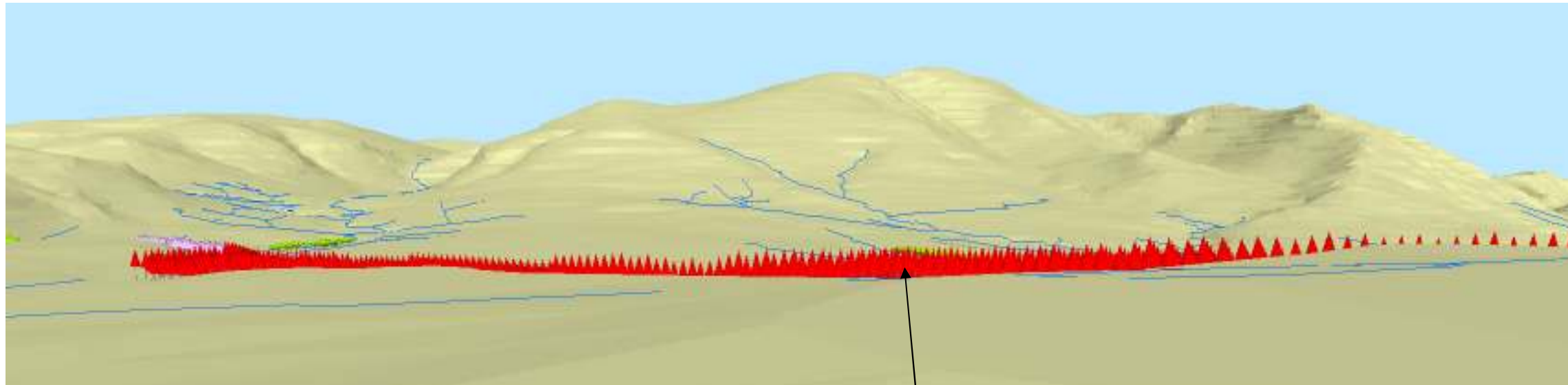
It is possible to see how the increase in area of native woodland is both in keeping with the wider landscape & links up neighbouring fragmented woodlands

Looking north-west from Cockup Fell.

North West England Forest District
Parkwood
Bassenthwaite
 Forest Design Plan

This map is based upon Ordnance Survey material with the permission of Ordnance Survey on behalf of the Controller of Her Majesty's Stationary Office. Crown Copyright. Unauthorised reproduction infringes Crown Copyright and may lead to prosecution or civil proceedings. Forestry Commission 10002548.2009

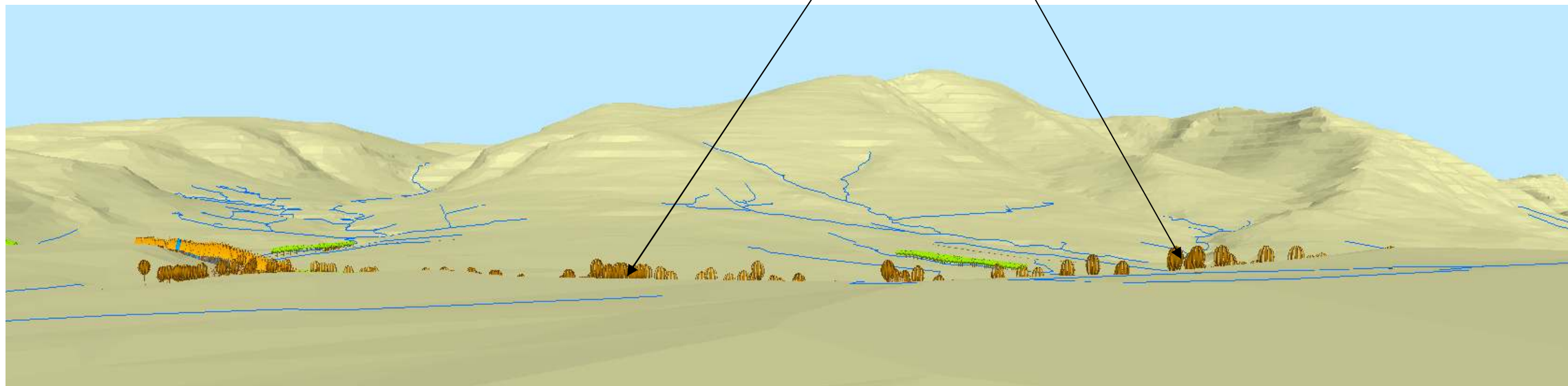
Computer Perspectives



Key	
Fell 2012 to 2016	█
Fell 2022 to 2026	█
Fell 2032 to 2036	█
Continuous Cover	█

Future Woodland Management Viewed in 2009

Looking in a southerly direction the woodland is visible only as a fringe of trees. However, even here it is possible to see that native broadleaved species are more in keeping with the landscape than conifer species.



Key	
Native Broadleaf	█
Spruce	█
Larch	█
Douglas fir	█
Private Forest	█

Future Woodland Species Viewed in 2030

Looking south-east from right of way off minor road to Caldbeck, Uldale & Ireby.

North West England Forest District
Parkwood
Bassenthwaite
 Forest Design Plan