

Woodfuel Suppliers Meeting Industry Development

08 October 2009

- **Gill Alker**
- Woodfuel Coordinator
- Forestry Commission England
- South East Region

- All woodfuel suppliers on national BEC list surveyed (321)
- Sawmill survey
- HMRC imports etc..
- First set of results Broadbrush figures
-

Form	Quantity (oven dry tonnes)
Logs for stoves and open fires	125,000
Wood chips	1,121,000
Wood pellets	539,000
Other	119,000



- “Being able to find fuel suppliers nearby is critical to the convenient operation of a biomass system. Through this page you can find woodfuel suppliers in your region”
- www.biomassenergycentre.org.uk



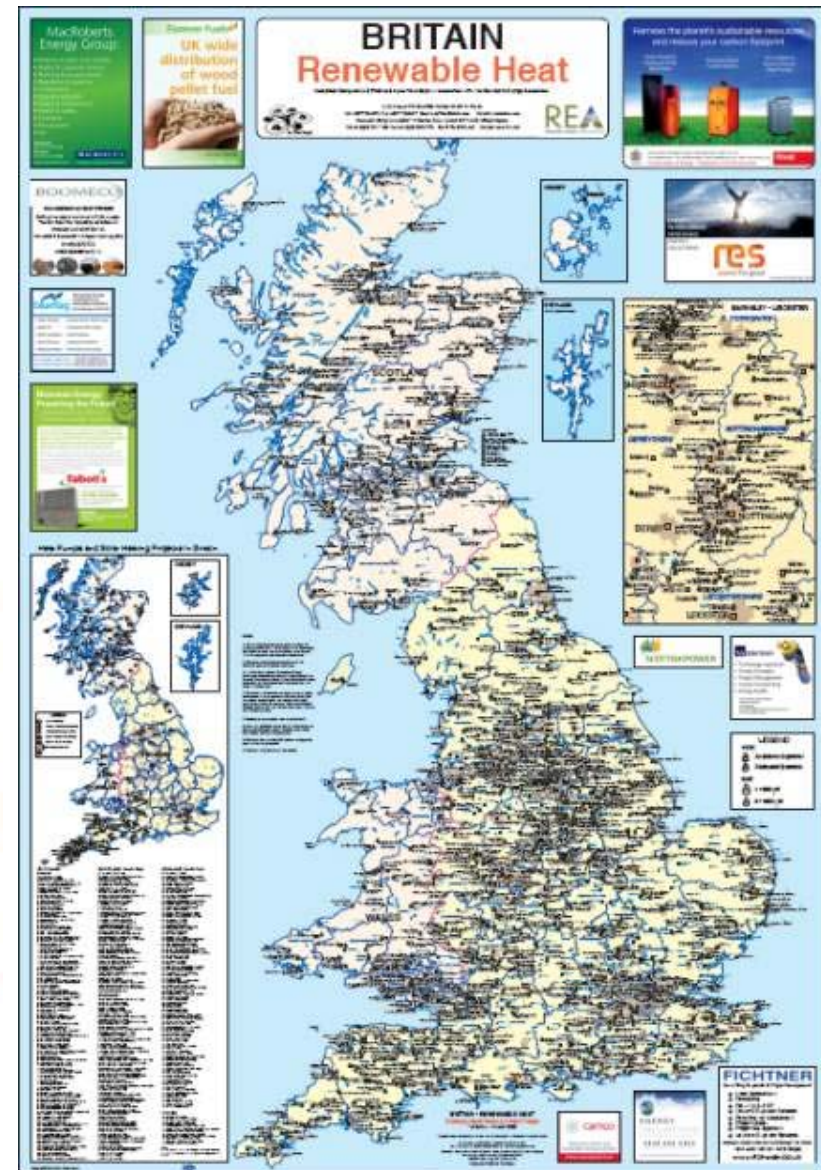
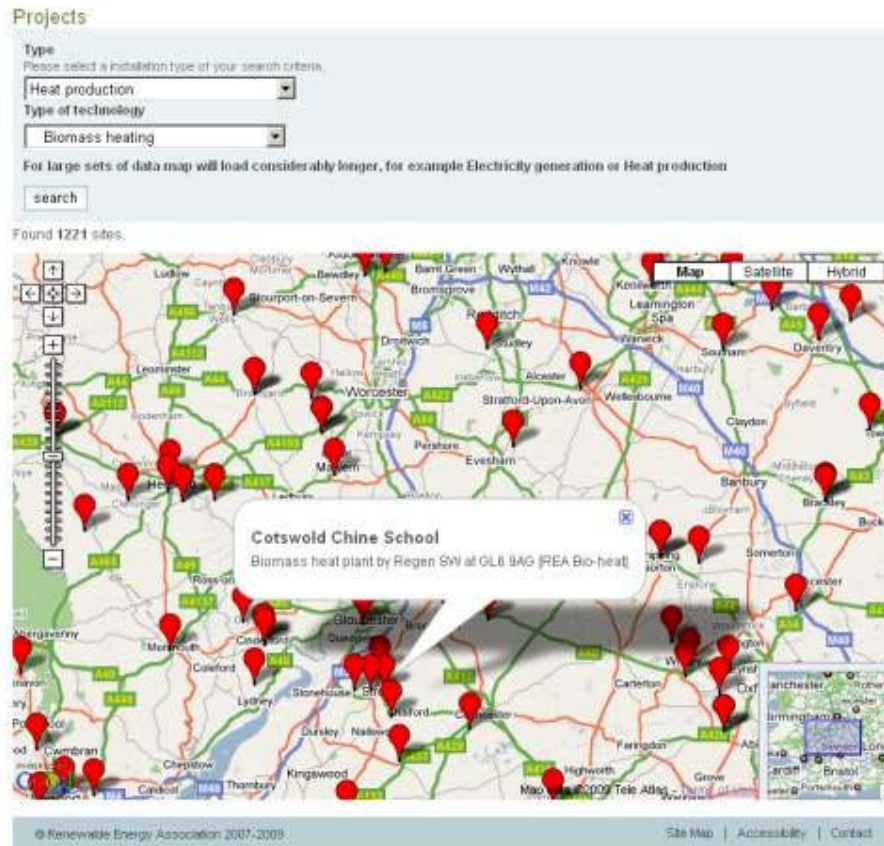
- Wood Waste Market in the UK - WRAP 2009
- 4.5 mt/yr of wood waste arisings in UK
- Majority from construction and demolition

	Packaging	Industrial	Construction	Demolition	Municipal	Total waste
East Midlands	101.8	40.3	80.8	73.9	36.1	332.9
Eastern	121.8	48.1	96.1	135.1	46.1	447.2
London	123.4	48.8	180.9	158.3	23.4	534.8
North East	36.7	14.5	50.4	45.6	26.9	174.1
North West	125.3	49.5	134.2	110.9	123	542.9
South East	162.7	64.3	150.8	190.7	57.6	626
South West	106	41.9	96.4	101.2	69.1	414.6
West Midlands	126.6	50	95.1	92.8	54.8	419.4
Yorkshire and Humber	103.3	40.8	108.7	91.9	69.4	414.1
England	1,007.6	398.4	993.4	1,000.3	506.3	3,906
Wales	49.6	19.6	45.1	35	55.4	204.7
Scotland	76.3	30.2	107.4	87.9	28.3	330.1
Northern Ireland	36.4	14.4	38.6	14.2	28.6	132.2
United Kingdom	1,169.9	462.5	1,184.5	1,137.4	618.7	4,572.9

- Amounts reduced - 14% since pre-recession peak.
- 1.5 x increase expected in demand for electricity production
- Demand outstrip supply over next few years



- 1,505 boilers in England
- 364 MWth



- Bioenergy Capital Grant Scheme funded 154 new projects
- Framework for Category A and B evidence published - see CPET website
- Carbon Trust Practical Guide www.carbontrust.co.uk/technology/technologyaccelerator/biomass





Forestry Commission
England

Thank You

The Wood Fuel Strategy

www.forestry.gov.uk/woodfuel