

What types of projects have received funding already?

Firewood processors to improve the efficiency and safety of firewood businesses.



Woodchipper for a woodfuel business to supply quality chip.

Mobile sawbenches to add value to timber at source.



A marketing project for wood products from a small local group of forestry contractors.

Infrastructure for the expansion of a business making sweet chestnut paling fencing.



Buildings for woodchip storage for a woodfuel supply business.

Where can I find out more?

For information on **ALL** these funding opportunities

www.forestry.gov.uk/segrants
01420 23337

RDPE Direct

Rural Development Officer
Forestry Commission
01296 696543

LEADER

www.seeda.co.uk/RDPE/Leader/index.asp
The webpage lists the 14 LEADER groups in the region, a map of their areas and their contact details.

South East Woodland and Timber Fund

Forestry Framework Officer
Forestry Commission
01420 23337

LandSkills South East

www.lantra.co.uk/LandSkillsSouthEast
Programme Manager
LandSkillsSE@lantra.co.uk
01444 871436

English Woodland Grant Scheme

Contact your local Forestry Commission Woodland Officer 01420 23337

Funding Opportunities for Forestry in the South East

Do you want to improve the economic value of your woodland?

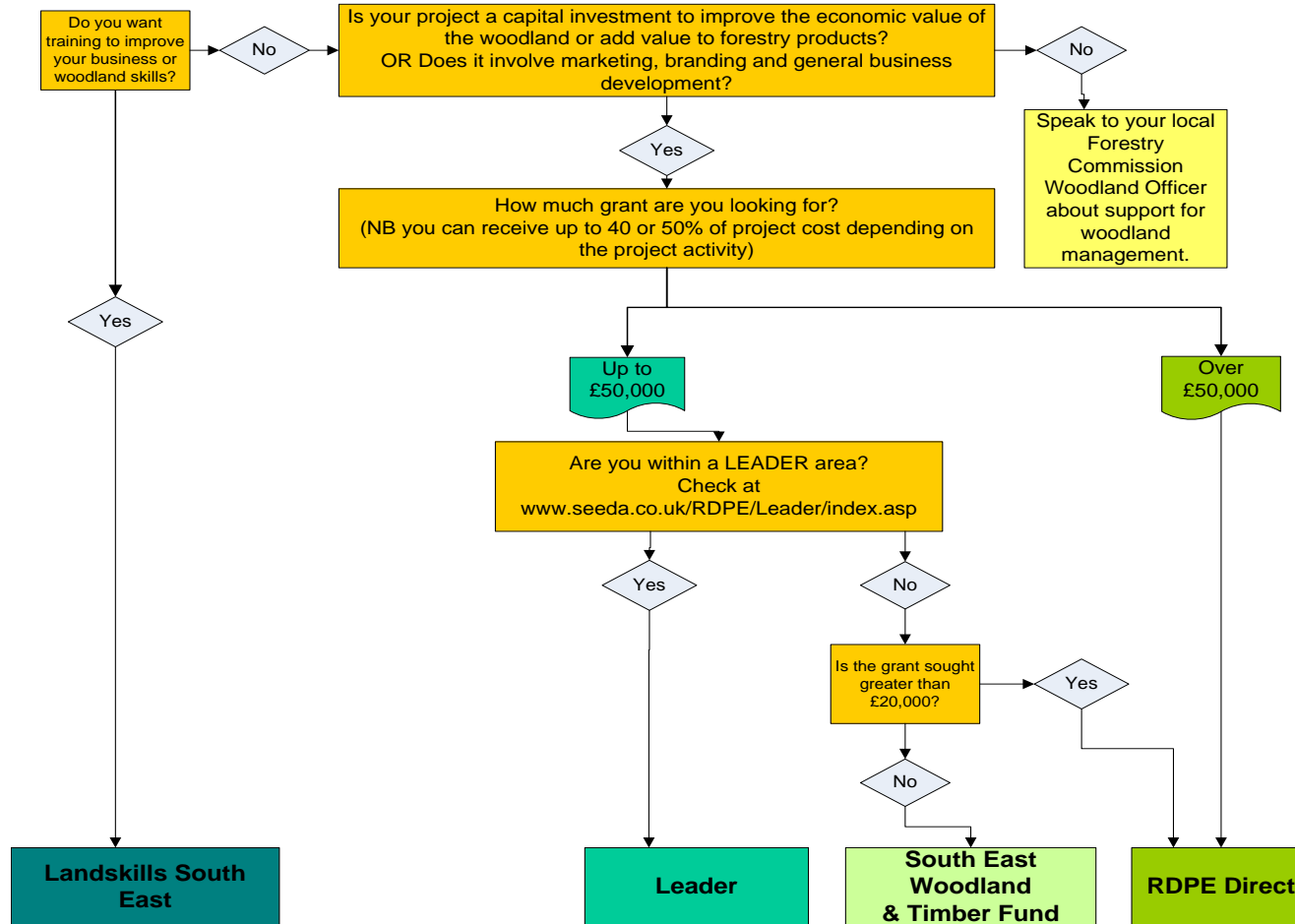
Are you considering adding value to your forestry products?

Do you want to invest in marketing support for your forestry business?

Grants are available now for you to invest in your forestry business.



Which grant scheme is best for me?



www.forestry.gov.uk/segrants



Tell me more about the grant schemes:

All these schemes allow the forestry and timber sector to secure the management of the South East's woodland through strengthening the supply chain and products available from the region's woodland. They particularly support capital investment in forestry businesses.

Rural Development Programme for England (RDPE) Direct

Funding for woodland owners, foresters and contractors to invest in their woodlands and businesses through purchase of capital equipment for woodland management, timber processing and adding value. There is support for the creation of woodfuel supply chains and diversification into recreation. Managed by the South East England Development Agency (SEEDA). Available until 2013.

LEADER – RDPE

Supports the same types of projects as RDPE Direct, only smaller scale, within specific local designated LEADER areas. 14 areas cover a large proportion of the region. Available until 2013.

South East Woodland and Timber Fund

Supports lower value projects to develop forestry businesses that are outside LEADER areas or not eligible under RDPE. Funded by SEEDA, managed by the Forestry Commission. Available until 2010.

LandSkills South East

Subsidised training in woodland management, forestry skills and business management. Managed by LANTRA on behalf of SEEDA. Available until 2013.

English Woodland Grant Scheme

Supports the creation, improvement and management of woodlands which deliver public benefits. Managed by the Forestry Commission.