

Woodlands, Community Development & Social Enterprise

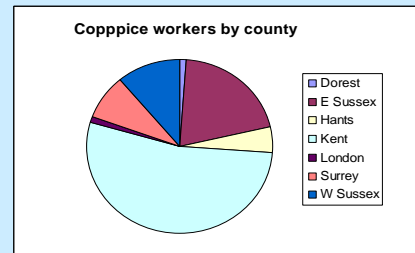
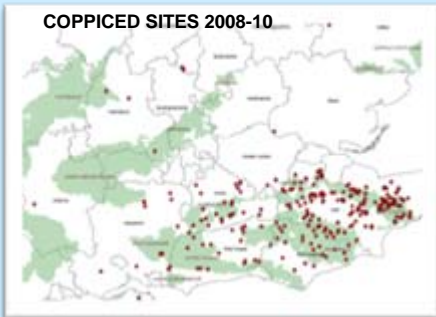
The Coppice Industry in South East England



Coppicing is a traditional way of managing mixed broadleaved woodlands in South East England. Trees are cut to the ground on rotation, depending on the end use of the timber. Multiple shoots spring up, grow, and are then cut again 12-20+ years later, depending on the end use, e.g. fencing, firewood or charcoal

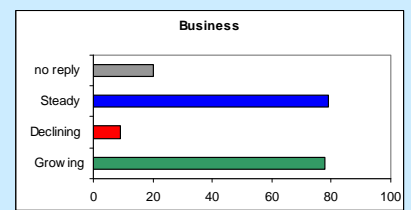
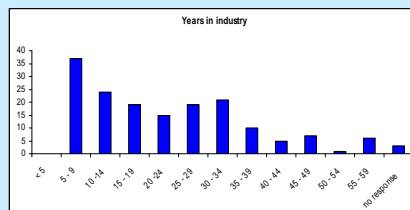
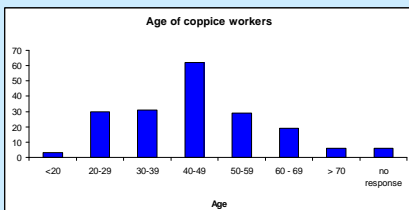
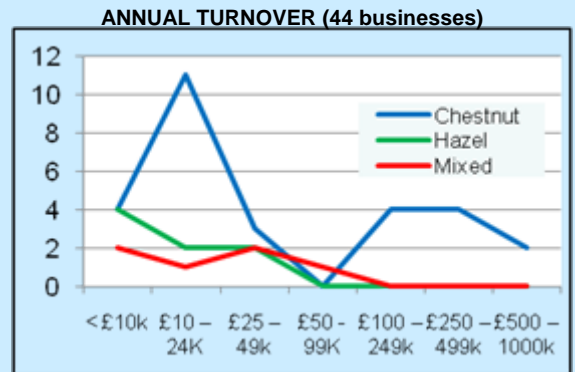
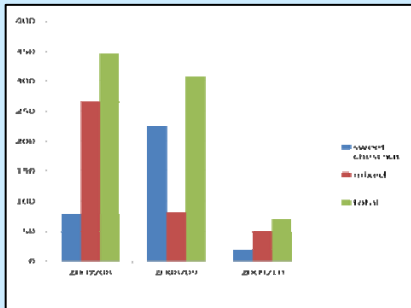


Over the past 50 years the area managed in this way has dropped. There are several reasons for this and the consequences for wildlife – as well as for landowner incomes – are serious. As well as maintaining a beautiful actively worked landscape it produces a wide range of coppice products, from fencing to firewood and charcoal.



This research investigates:

- how much coppice is cut
- find out who the cutters are and their issues
- explore ways of working with them to develop their businesses
- Training needs analysis, with view to securing funding



UNIVERSITY
of

A Coppice Conference, supported by the Forestry Commission, will be held in West Sussex in October 2010. For details contact: Debbie Bartlett CMLI FIEEM Senior lecturer, Environmental Conservation

