
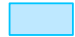






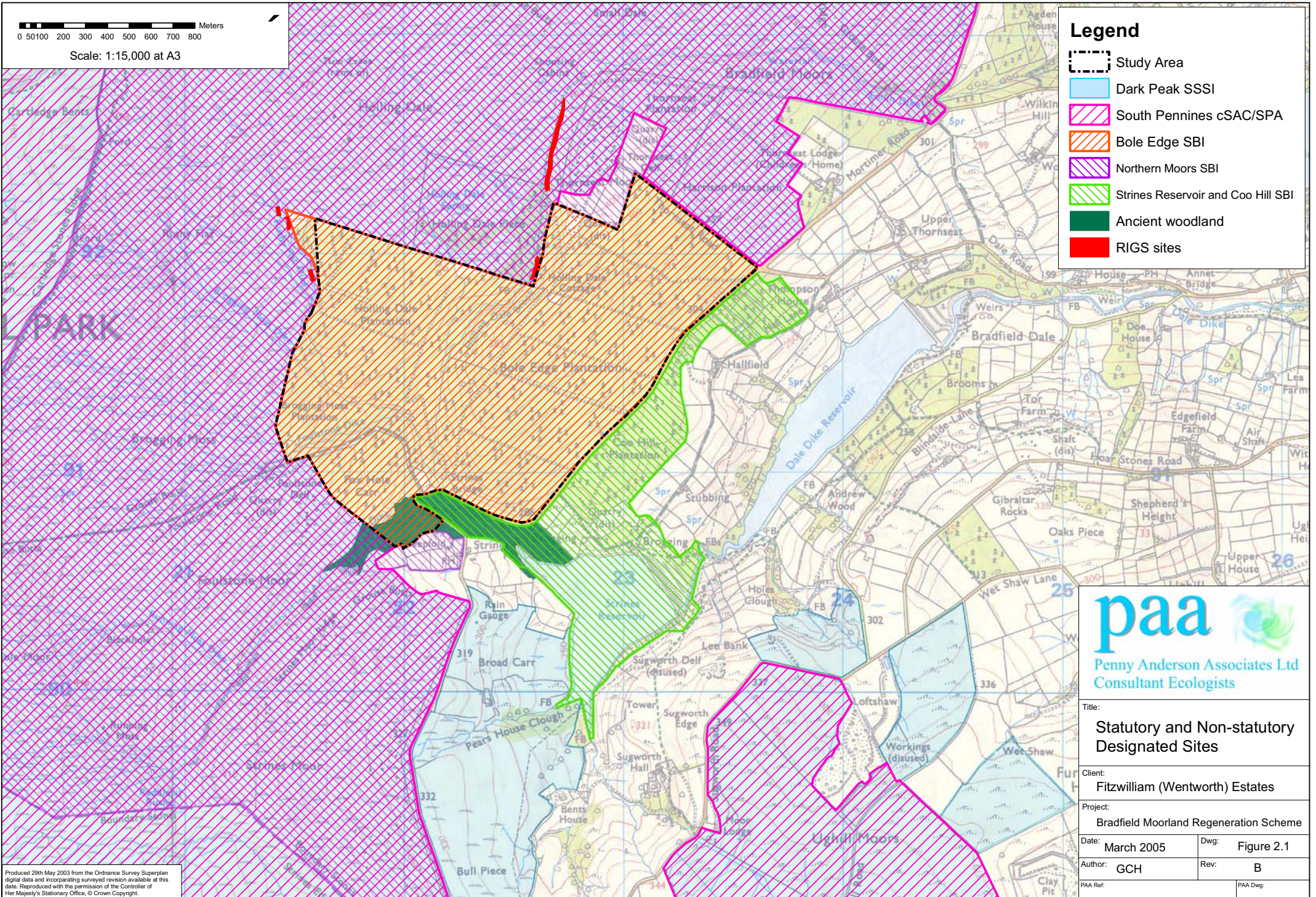


0 50 100 200 300 400 500 600 700 800 Meters

Scale: 1:15,000 at A3

Legend

-  Study Area
-  Dark Peak SSSI
-  South Pennines cSAC/SPA
-  Bole Edge SBI
-  Northern Moors SBI
-  Strines Reservoir and Coo Hill SBI
-  Ancient woodland
-  RIGS sites



Title:
Statutory and Non-statutory Designated Sites

Client:
Fitzwilliam (Wentworth) Estates

Project:
Bradfield Moorland Regeneration Scheme

Date: **March 2005** Dwg: **Figure 2.1**

Author: **GCH** Rev: **B**

PAA Ref: PAA Dwg:

Produced 29th May 2003 from the Ordnance Survey Superplan digital data and incorporating surveyed revision available at this date. Reproduced with the permission of the Controller of Her Majesty's Stationary Office. © Crown Copyright.