

Woodland mini-beasts – Explorer Backpack KS1

This backpack contains a set of resources and activity ideas for you to search for, sort and identify mini-beasts amongst the leaf litter, under logs and on the trees.

Item	No.	Activity Ideas
Bug pots 	15	Share with a partner - temporarily house the mini-beasts you find in these bug pots. Please use with paintbrushes!
Magnifying glasses 	15	Share with a partner - ideal for looking closely at small mini-beasts living on bark, in rolled up leaves, under rocks and logs.
Paintbrushes 	15	Share with a partner – use the soft bristles of the paintbrush to gently sweep a mini-beast into a bug pot. Picking up with your fingers can damage the invertebrates no matter how careful you are.
Picture ID sheets	8	A introduction to woodland mini-beasts
ID keys 	8	A set of FSC ID keys for mini-beasts found amongst the leaf litter
Grouping/ sorting question cards	1	Now you've found a variety of mini-beasts how can you sort them? A series of focussed questions that will look closely at the mini-beast you find, how they move, and how they fit into woodland food chains
Mini-beasts by numbers 	1	A great active game that explores the shape and structure of different mini-beasts
Who Am I?	15	An introduction game to using a key. Challenge a friend to guess which mini-beast by following a carefully structured set of yes/no questions.

Grouping, sorting and challenge cards

Sorting Activity 1

- Use the bug pots and paintbrushes to collect as many different mini-beasts as you can. Try to remember where you found each one – under a log, in the leaf litter, on the tree bark.
- How can you sort them? Choose either a yes / no question or a category for grouping. For example:

Yes / no question – does it have legs?

Yes / no question – does it have wings?

Category – number of legs

Category – way of moving

- Discuss how each group sorted out their mini-beasts and name a few mini-beasts that fall into each group.
- Remember to put each mini-beast back in a suitable place.



Sorting Activity 2

- Use the bug pots and paintbrushes to collect as many different species of one type of mini-beasts as you can, for example woodlouse or slug. Try to remember where you found each one – under a log, in the leaf litter, on the tree bark.
- How can you group them? Choose either a yes / no question or a category for grouping. For example:

Yes / no question – does it have stripes?

Yes / no question – is it grey?

Category – body patterns or markings

Category – colour

- Discuss how each group sorted out their mini-beasts and name a few mini-beasts that fall into each group.
- Remember to put each mini-beast back in a suitable place.



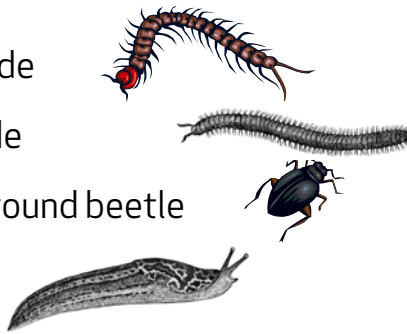
Challenge 1

Look at how each mini-beast moves.

Which do you think eats plants and which will hunt and eat other mini-beasts?

Will a plant eater (herbivore) or a meat eater (carnivore) need to move the fastest to get its food?

- centipede
- millipede
- black ground beetle
- slug



<http://etc.usf.edu/clipart/>

Challenge 2

Choose one of the mini-beasts you've collected.

How is it adapted or suited to live and survive in the woodland?

Think about:

- where its made its home
- body colour or pattern
- how it moves
- what it likes to eat



Challenge 3

All animals need a shelter, water, air (oxygen) and food to survive.

Choose one of your mini-beasts and see if you can spot the four things its needs.

