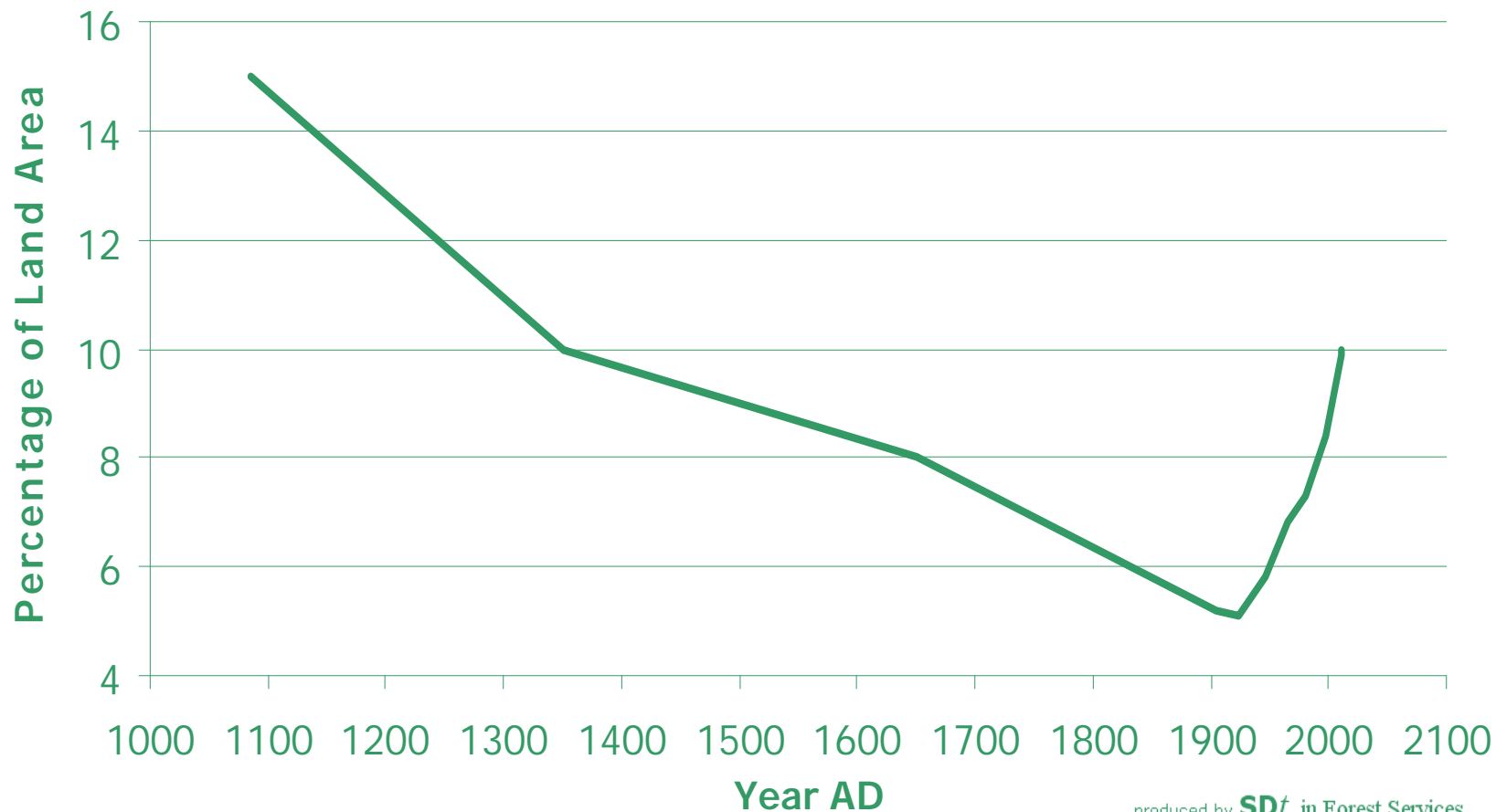




Woodland as a percentage of land area in England, 1086-2011  
(Encompassing 'Area of woodland (total and change over time)' the  
FC England Woodlands Indicator 7)



produced by **SDt** in Forest Services

Source: Forestry Statistics



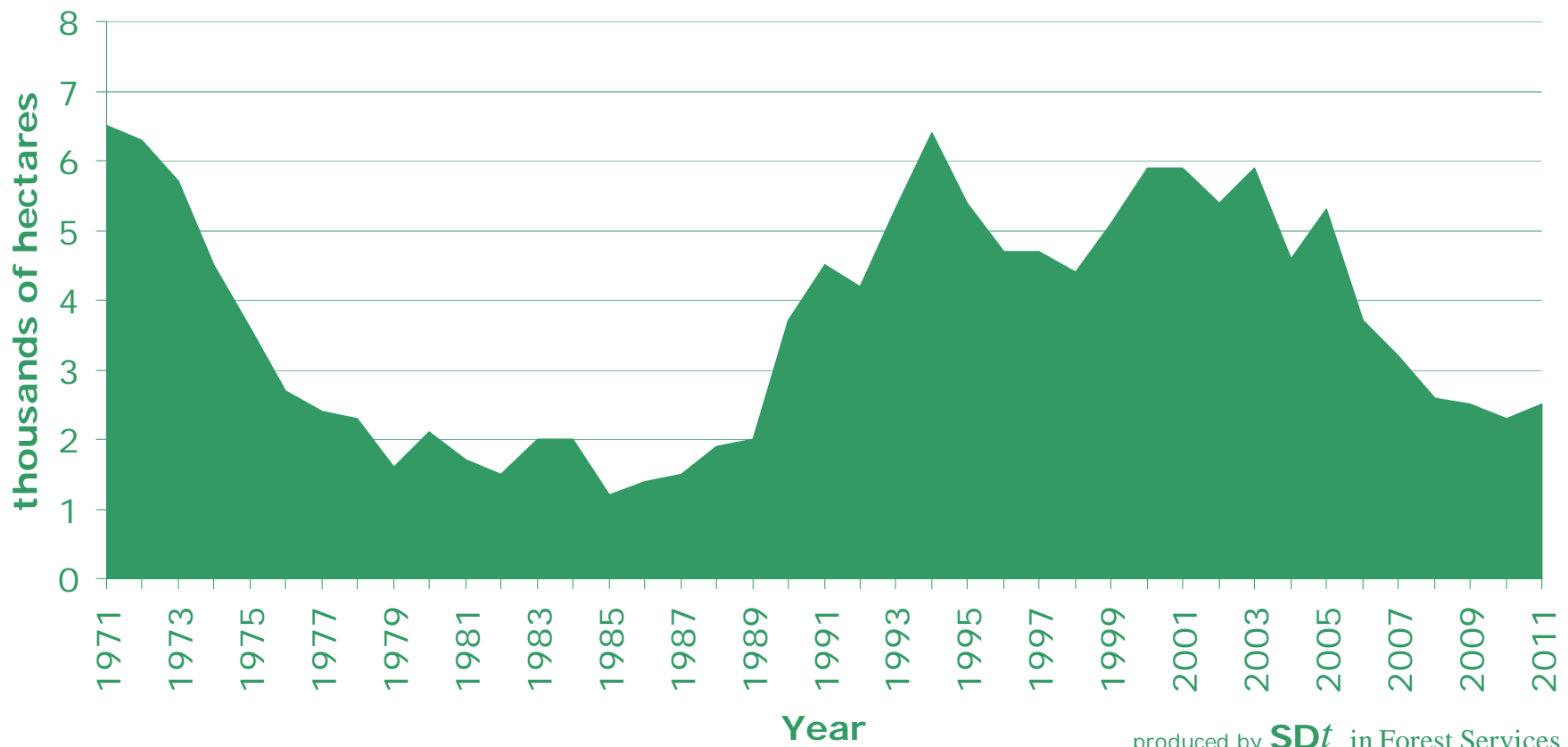
Woodland as a percentage of land area in England, 1905-2011  
(Encompassing 'Area of woodland (total and change over time)' the  
FC England Woodlands Indicator 7)



produced by **SDt** in Forest Services



New planting in England  
(Encompassing 'Hectares of woodland created (gross)',  
the FC England Impact Indicator 6)



Source: Forestry Statistics

produced by SDt in Forest Services



## Carbon captured by English woodland (FC England Woodlands Indicator 8)

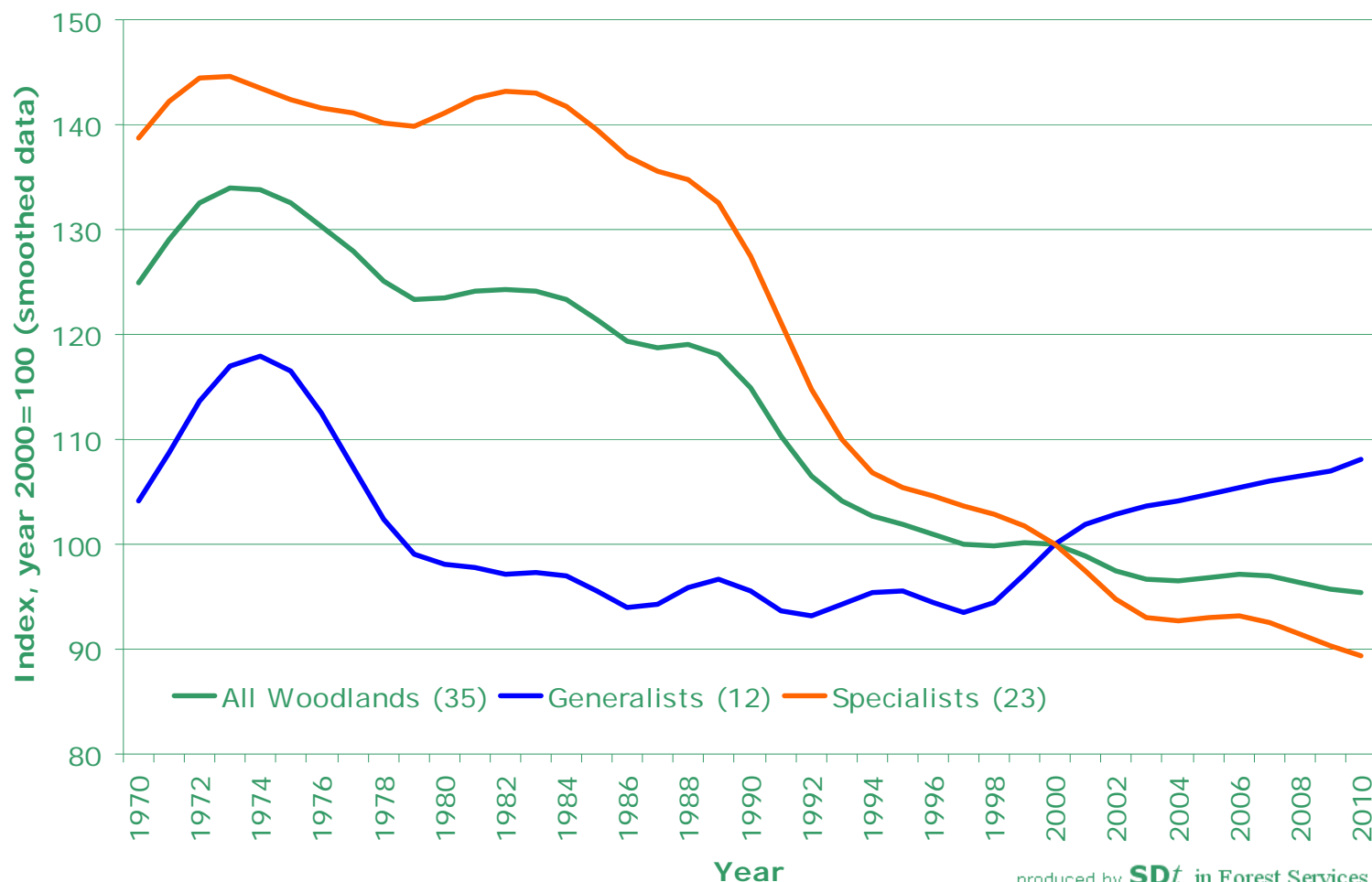


produced by **SDt** in Forest Services

Source: Centre for Ecology and Hydrology (for DECC)



Measure of what is happening to the number and variety of species that live in woodland, using Woodland Birds data (FC England Woodland Indicator 6)



produced by SDt in Forest Services

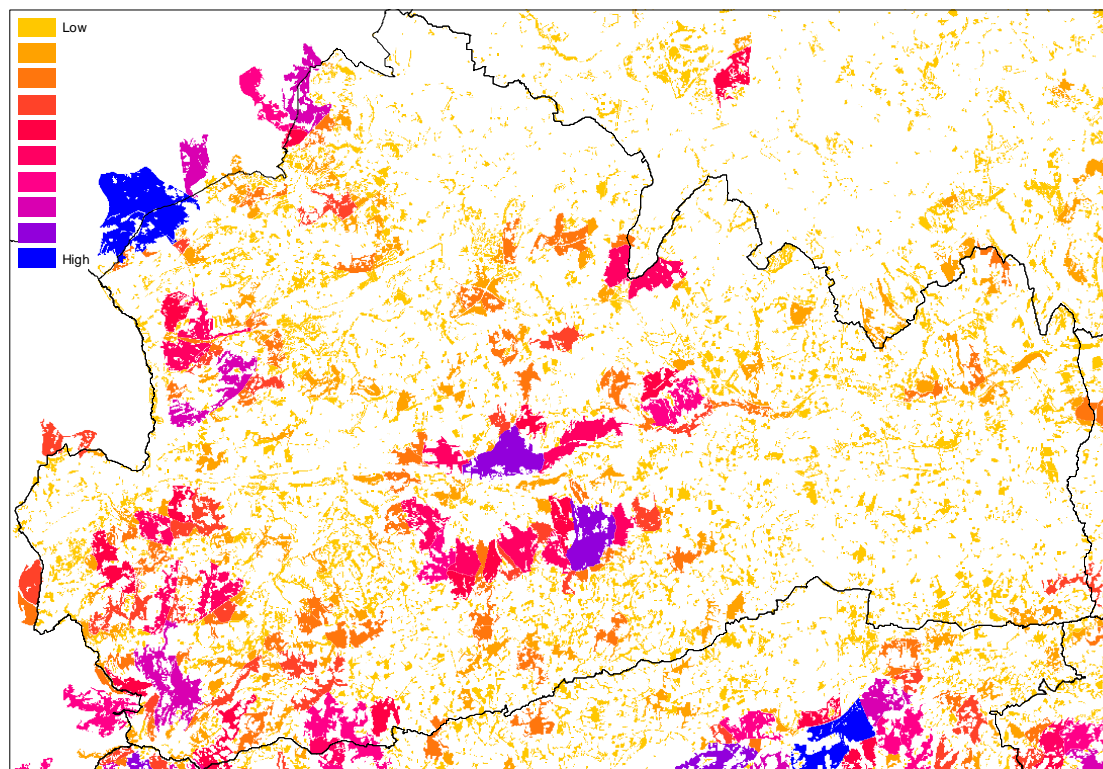
Source: Woodland Bird Indices (Defra)

## Indicator:

Measure of woodland resilience to climate change based on the size and spatial configuration of woodland patches within the landscape .

## Description:

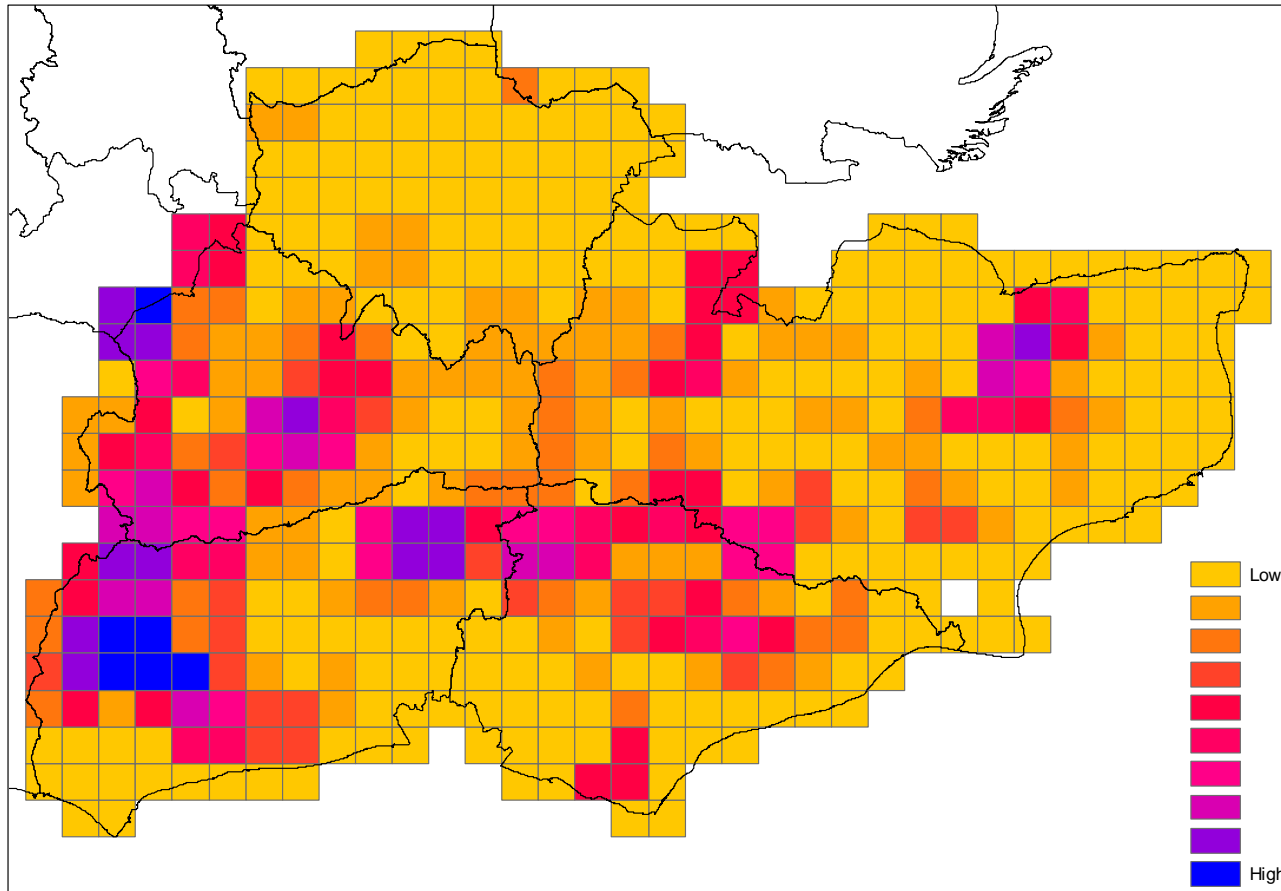
The Indicator represents the connectivity of woodland - a combination of within (intra) and - size of individual woodlands between (inter) – linkages with neighbouring woodlands patches 'patch' connectivity. Favouring larger, clustered woodlands as opposed to smaller, isolated woodlands.



Source: Forest Research



## Connectivity grid – south east



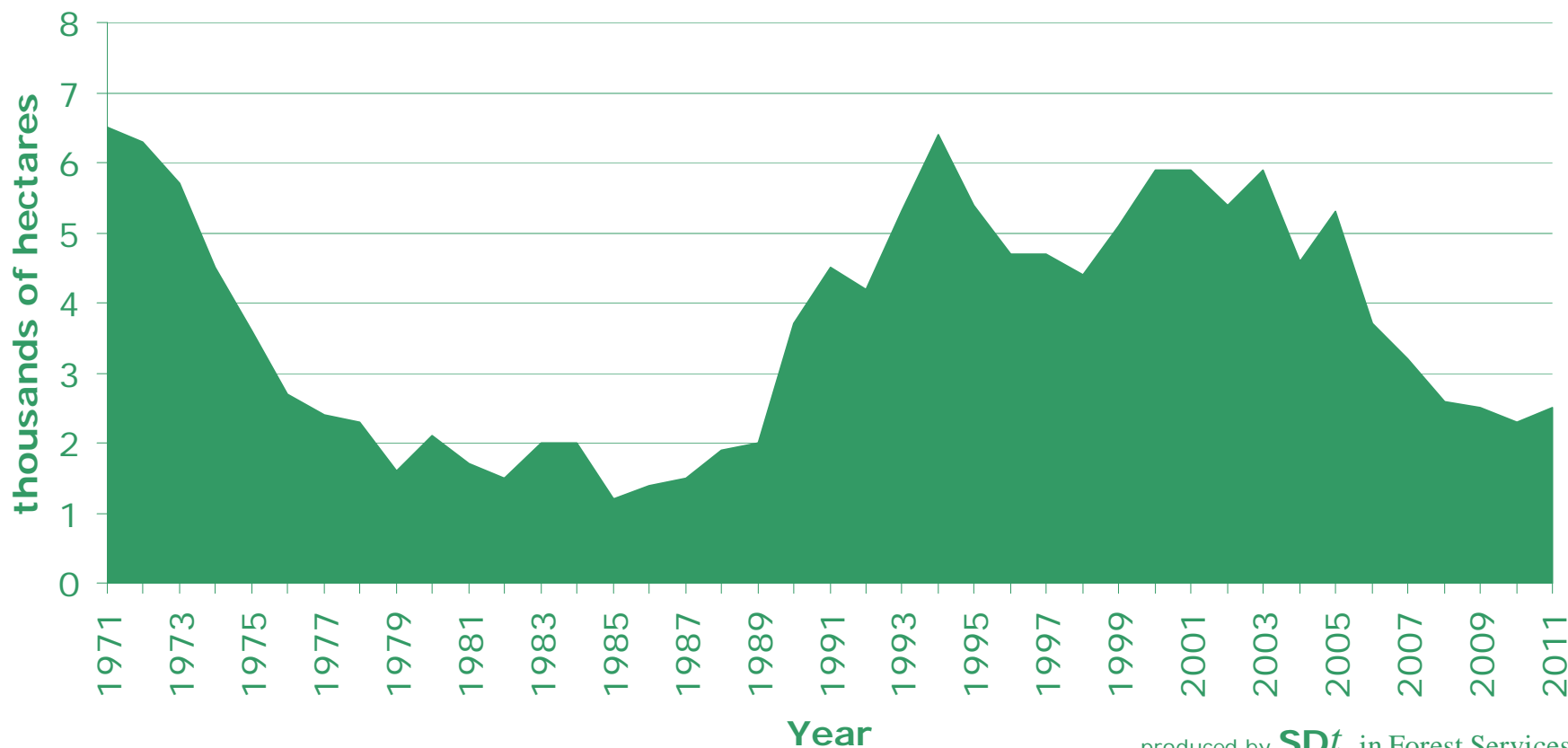
### Indicator:

- Based on peer-reviewed techniques
- used by Defra on other habitats,
- simple model for longevity .

Source: Forest Research



New planting in England  
(Encompassing 'Hectares of woodland created (gross)',  
the FC England Impact Indicator 6)



Source: Forestry Statistics

produced by SDt in Forest Services