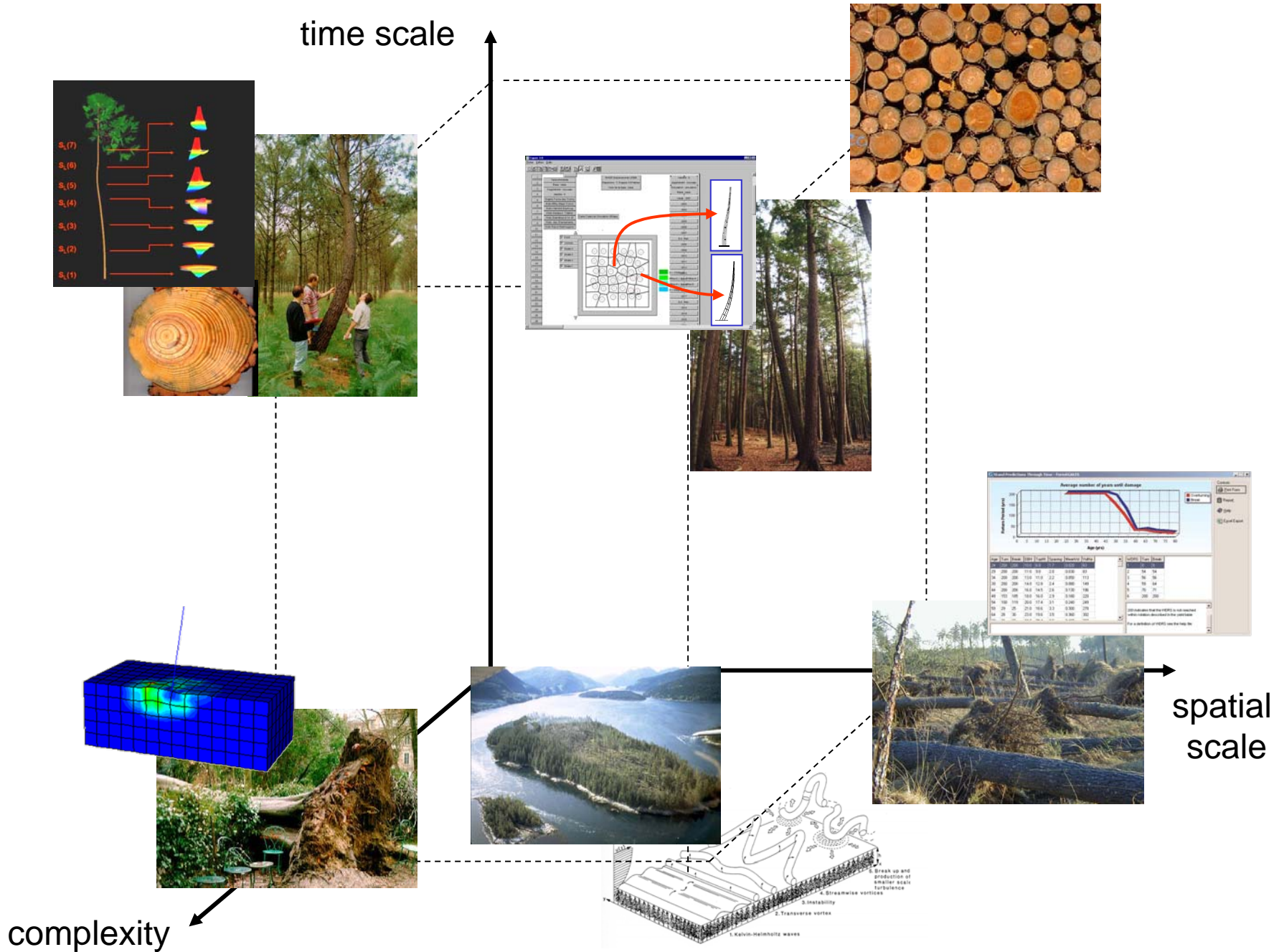




**WELCOME TO THE WORKSHOP ON  
*TREE STABILITY : MODELS  
STRANDARDISATION AND INTEGRATION***



# Diversity of questions and models



# We'll discuss about...

- Different objectives = different models (?)
- Defining standards
- Interest in sharing models
- Strength and weakness of existing models
- Improving existing models
- Coupling/integration and running models (platforms)
- Co-development, open sources...
- Following events and animation of the group...