

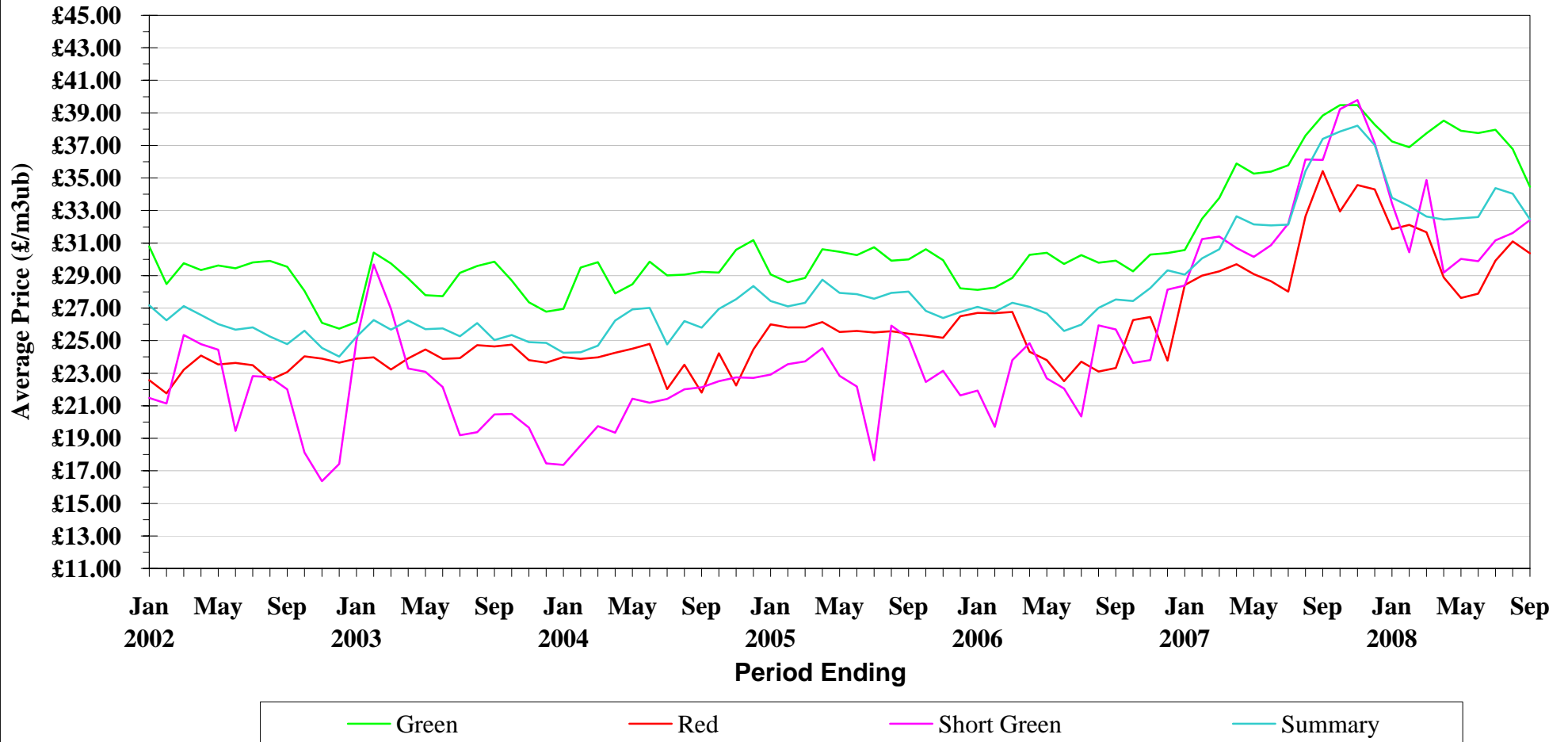
**Direct Production - GB Average Unit Prices**

			Unit Price				Unit Price		
<b>Green</b>	1/07/06	to	30/09/06	29.92	<b>Short Green A</b>	1/07/06	to	30/09/06	25.78
	1/08/06	to	31/10/06	29.27		1/08/06	to	31/10/06	23.39
	1/09/06	to	30/11/06	30.30		1/09/06	to	30/11/06	25.59
	1/10/06	to	31/12/06	30.38		1/10/06	to	31/12/06	27.88
	1/11/06	to	31/01/07	30.58		1/11/06	to	31/01/07	28.05
	1/12/06	to	28/02/07	32.49		1/12/06	to	28/02/07	31.24
	1/01/07	to	31/03/07	33.77		1/01/07	to	31/03/07	30.52
	1/02/07	to	30/04/07	35.90		1/02/07	to	30/04/07	30.46
	1/03/07	to	31/05/07	35.26		1/03/07	to	31/05/07	29.85
	1/04/07	to	30/06/07	35.40		1/04/07	to	30/06/07	29.90
	1/05/07	to	31/07/07	35.78		1/05/07	to	31/07/07	29.79
	1/06/07	to	31/08/07	37.61		1/06/07	to	31/08/07	33.60
	1/07/07	to	30/09/07	38.84		1/07/07	to	30/09/07	35.33
	1/08/07	to	31/10/07	39.49		1/08/07	to	31/10/07	37.78
	1/09/07	to	30/11/07	39.47		1/09/07	to	30/11/07	38.61
	1/10/07	to	31/12/07	38.27		1/10/07	to	31/12/07	35.74
	1/11/07	to	31/01/08	37.25		1/11/07	to	31/01/08	31.37
	1/12/07	to	29/02/08	36.89		1/12/07	to	29/02/08	28.39
	1/01/08	to	31/03/08	37.75		1/01/08	to	31/03/08	33.01
	1/02/08	to	30/04/08	38.52		1/02/08	to	30/04/08	28.81
1/03/08	to	31/05/08	37.91	1/03/08	to	31/05/08	29.31		
1/04/08	to	30/06/08	37.77	1/04/08	to	30/06/08	29.38		
1/05/08	to	31/07/08	37.96	1/05/08	to	31/07/08	30.86		
1/06/08	to	31/08/08	36.78	1/06/08	to	31/08/08	29.97		
1/07/08	to	30/09/08	34.46	1/07/08	to	30/09/08	29.50		
			<b>Unit Price</b>				<b>Unit Price</b>		
<b>Red</b>	1/07/06	to	30/09/06	23.33	<b>Short Green B</b>	1/07/06	to	30/09/06	25.21
	1/08/06	to	31/10/06	26.27		1/08/06	to	31/10/06	27.10
	1/09/06	to	30/11/06	26.46		1/09/06	to	30/11/06	23.56
	1/10/06	to	31/12/06	23.77		1/10/06	to	31/12/06	30.15
	1/11/06	to	31/01/07	28.42		1/11/06	to	31/01/07	30.36
	1/12/06	to	28/02/07	28.99		1/12/06	to	28/02/07	31.28
	1/01/07	to	31/03/07	29.27		1/01/07	to	31/03/07	36.78
	1/02/07	to	30/04/07	29.70		1/02/07	to	30/04/07	37.64
	1/03/07	to	31/05/07	29.09		1/03/07	to	31/05/07	38.94
	1/04/07	to	30/06/07	28.66		1/04/07	to	30/06/07	46.46
	1/05/07	to	31/07/07	28.01		1/05/07	to	31/07/07	46.78
	1/06/07	to	31/08/07	32.64		1/06/07	to	31/08/07	47.41
	1/07/07	to	30/09/07	35.42		1/07/07	to	30/09/07	44.20
	1/08/07	to	31/10/07	32.94		1/08/07	to	31/10/07	43.90
	1/09/07	to	30/11/07	34.57		1/09/07	to	30/11/07	43.79
	1/10/07	to	31/12/07	34.31		1/10/07	to	31/12/07	38.77
	1/11/07	to	31/01/08	31.85		1/11/07	to	31/01/08	39.67
	1/12/07	to	29/02/08	32.12		1/12/07	to	29/02/08	36.14
	1/01/08	to	31/03/08	31.67		1/01/08	to	31/03/08	42.50
	1/02/08	to	30/04/08	28.89		1/02/08	to	30/04/08	37.86
1/03/08	to	31/05/08	27.62	1/03/08	to	31/05/08	38.46		
1/04/08	to	30/06/08	27.90	1/04/08	to	30/06/08	37.29		
1/05/08	to	31/07/08	29.92	1/05/08	to	31/07/08	36.17		
1/06/08	to	31/08/08	31.11	1/06/08	to	31/08/08	35.51		
1/07/08	to	30/09/08	30.37	1/07/08	to	30/09/08	36.70		
			<b>Unit Price</b>				<b>Unit Price</b>		
<b>Summary for All</b>	1/07/06	to	30/09/06	27.53					
	1/08/06	to	31/10/06	27.44					
	1/09/06	to	30/11/06	28.23					
	1/10/06	to	31/12/06	29.32					
	1/11/06	to	31/01/07	29.07					
	1/12/06	to	28/02/07	30.06					
	1/01/07	to	31/03/07	30.63					
	1/02/07	to	30/04/07	32.66					
	1/03/07	to	31/05/07	32.14					
	1/04/07	to	30/06/07	32.09					
	1/05/07	to	31/07/07	32.13					
	1/06/07	to	31/08/07	35.42					
	1/07/07	to	30/09/07	37.41					
	1/08/07	to	31/10/07	37.86					
	1/09/07	to	30/11/07	38.21					
	1/10/07	to	31/12/07	37.02					
	1/11/07	to	31/01/08	33.79					
	1/12/07	to	29/02/08	33.27					
	1/01/08	to	31/03/08	32.63					
	1/02/08	to	30/04/08	32.44					
1/03/08	to	31/05/08	32.53						
1/04/08	to	30/06/08	32.60						
1/05/08	to	31/07/08	34.38						
1/06/08	to	31/08/08	34.04						
1/07/08	to	30/09/08	32.46						

GB

# Direct Production - Average Unit Prices

January 2002 to September 2008



NB - When category is not shown - No figures available for period

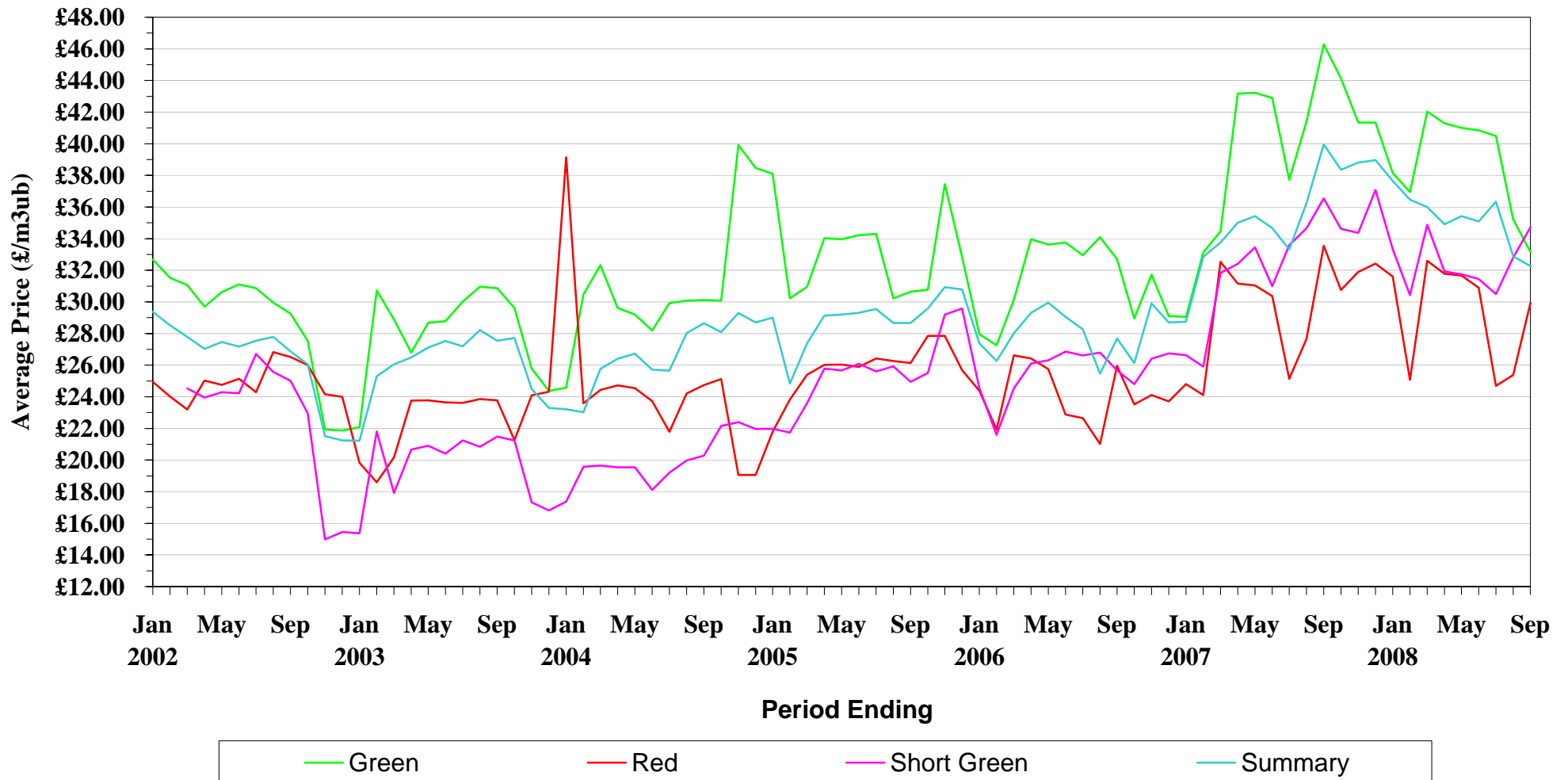
**Direct Production - ENGLAND Average Unit Prices**

<b>Green</b>			<b>Unit Price</b>	<b>Short Green</b>			<b>Unit Price</b>
1/07/06	to	30/09/06	32.69	1/07/06	to	30/09/06	25.67
1/08/06	to	31/10/06	28.95	1/08/06	to	31/10/06	24.79
1/09/06	to	30/11/06	31.72	1/09/06	to	30/11/06	26.41
1/10/06	to	31/12/06	29.09	1/10/06	to	31/12/06	26.75
1/11/06	to	31/01/07	29.05	1/11/06	to	31/01/07	26.63
1/12/06	to	28/02/07	33.13	1/12/06	to	28/02/07	25.91
1/01/07	to	31/03/07	34.46	1/01/07	to	31/03/07	31.82
1/02/07	to	30/04/07	43.17	1/02/07	to	30/04/07	32.41
1/03/07	to	31/05/07	43.22	1/03/07	to	31/05/07	33.45
1/04/07	to	30/06/07	42.90	1/04/07	to	30/06/07	30.99
1/05/07	to	31/07/07	37.71	1/05/07	to	31/07/07	33.59
1/06/07	to	31/08/07	41.40	1/06/07	to	31/08/07	34.65
1/07/07	to	30/09/07	46.29	1/07/07	to	30/09/07	36.55
1/08/07	to	31/10/07	44.14	1/08/07	to	31/10/07	34.63
1/09/07	to	30/11/07	41.34	1/09/07	to	30/11/07	34.36
1/10/07	to	31/12/07	41.34	1/10/07	to	31/12/07	37.07
1/11/07	to	31/01/08	38.15	1/11/07	to	31/01/08	33.34
1/12/07	to	29/02/08	36.95	1/12/07	to	29/02/08	30.43
1/01/08	to	31/03/08	42.03	1/01/08	to	31/03/08	34.87
1/02/08	to	30/04/08	41.29	1/02/08	to	30/04/08	31.93
1/03/08	to	31/05/08	41.00	1/03/08	to	31/05/08	31.74
1/04/08	to	30/06/08	40.84	1/04/08	to	30/06/08	31.44
1/05/08	to	31/07/08	40.49	1/05/08	to	31/07/08	30.49
1/06/08	to	31/08/08	35.21	1/06/08	to	31/08/08	32.80
1/07/08	to	30/09/08	33.16	1/07/08	to	30/09/08	34.72
<b>Red</b>			<b>Unit Price</b>	<b>Summary for All</b>			<b>Unit Price</b>
1/07/06	to	30/09/06	25.95	1/07/06	to	30/09/06	27.69
1/08/06	to	31/10/06	23.52	1/08/06	to	31/10/06	26.14
1/09/06	to	30/11/06	24.11	1/09/06	to	30/11/06	29.91
1/10/06	to	31/12/06	23.72	1/10/06	to	31/12/06	28.70
1/11/06	to	31/01/07	24.79	1/11/06	to	31/01/07	28.75
1/12/06	to	28/02/07	24.11	1/12/06	to	28/02/07	32.86
1/01/07	to	31/03/07	32.54	1/01/07	to	31/03/07	33.76
1/02/07	to	30/04/07	31.16	1/02/07	to	30/04/07	35.00
1/03/07	to	31/05/07	31.05	1/03/07	to	31/05/07	35.42
1/04/07	to	30/06/07	30.37	1/04/07	to	30/06/07	34.67
1/05/07	to	31/07/07	25.14	1/05/07	to	31/07/07	33.32
1/06/07	to	31/08/07	27.66	1/06/07	to	31/08/07	36.25
1/07/07	to	30/09/07	33.55	1/07/07	to	30/09/07	39.96
1/08/07	to	31/10/07	30.75	1/08/07	to	31/10/07	38.36
1/09/07	to	30/11/07	31.89	1/09/07	to	30/11/07	38.80
1/10/07	to	31/12/07	32.42	1/10/07	to	31/12/07	38.97
1/11/07	to	31/01/08	31.61	1/11/07	to	31/01/08	37.65
1/12/07	to	29/02/08	25.07	1/12/07	to	29/02/08	36.47
1/01/08	to	31/03/08	32.60	1/01/08	to	31/03/08	36.00
1/02/08	to	30/04/08	31.78	1/02/08	to	30/04/08	34.90
1/03/08	to	31/05/08	31.68	1/03/08	to	31/05/08	35.42
1/04/08	to	30/06/08	30.90	1/04/08	to	30/06/08	35.08
1/05/08	to	31/07/08	24.70	1/05/08	to	31/07/08	36.34
1/06/08	to	31/08/08	25.39	1/06/08	to	31/08/08	32.88
1/07/08	to	30/09/08	29.93	1/07/08	to	30/09/08	32.25

**ENGLAND**

# Direct Production - Average Unit Prices

January 2002 to September 2008



NB - When category is not shown - No figures available for period

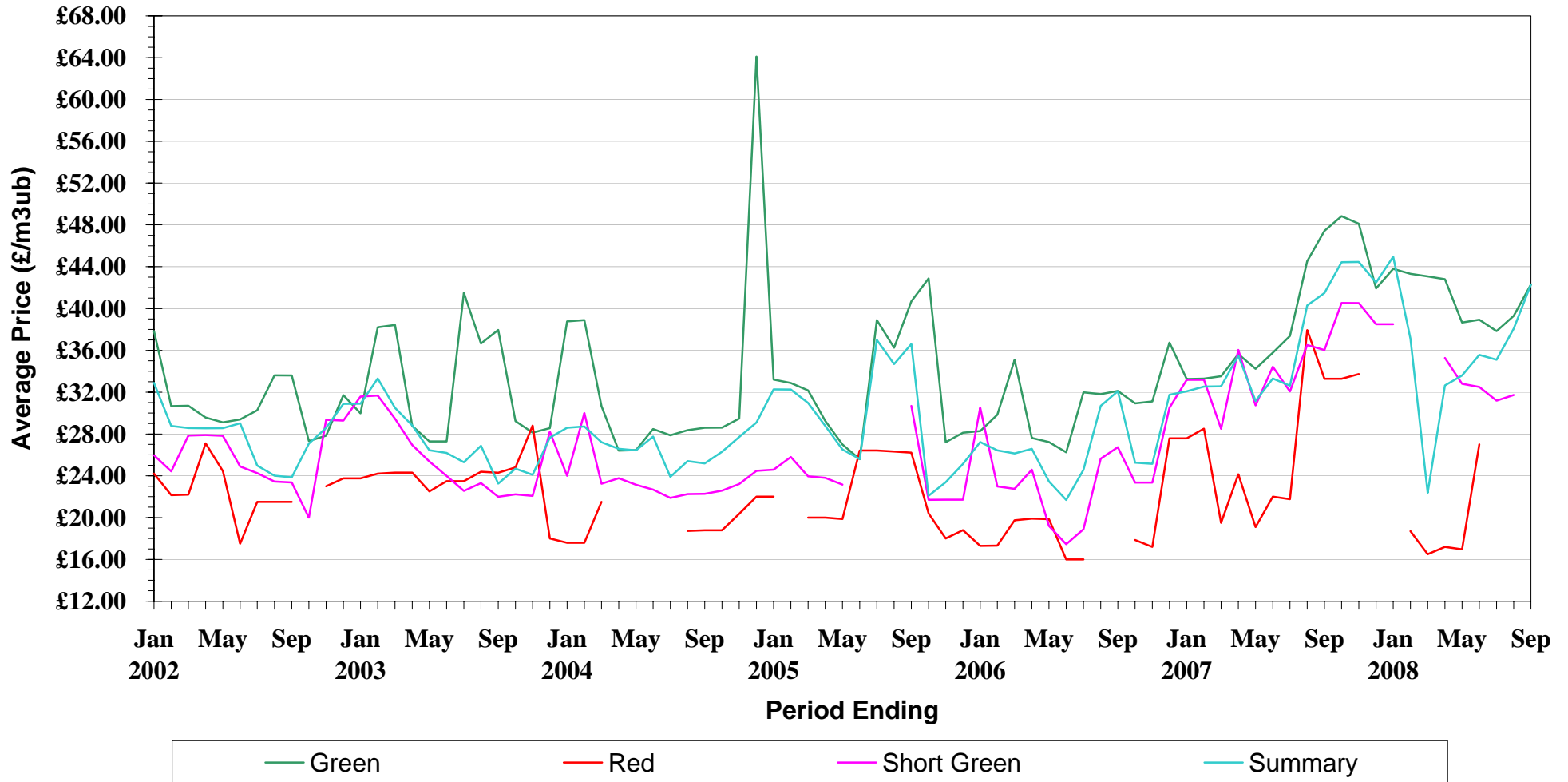
**Direct Production - WALES Average Unit Prices**

			Unit Price				Unit Price
<b>Green</b>	1/07/06	to 30/09/06	32.12	<b>Short Green</b>	1/07/06	to 30/09/06	
	1/08/06	to 31/10/06	30.93		1/08/06	to 31/10/06	23.35
	1/09/06	to 30/11/06	31.11		1/09/06	to 30/11/06	23.35
	1/10/06	to 31/12/06	36.74		1/10/06	to 31/12/06	30.50
	1/11/06	to 31/01/07	33.26		1/11/06	to 31/01/07	
	1/12/06	to 28/02/07	33.29		1/12/06	to 28/02/07	
	1/01/07	to 31/03/07	33.52		1/01/07	to 31/03/07	
	1/02/07	to 30/04/07	35.64		1/02/07	to 30/04/07	36.05
	1/03/07	to 31/05/07	34.23		1/03/07	to 31/05/07	30.74
	1/04/07	to 30/06/07	35.77		1/04/07	to 30/06/07	34.43
	1/05/07	to 31/07/07	37.38		1/05/07	to 31/07/07	32.07
	1/06/07	to 31/08/07	44.54		1/06/07	to 31/08/07	36.51
	1/07/07	to 30/09/07	47.43		1/07/07	to 30/09/07	36.03
	1/08/07	to 31/10/07	48.84		1/08/07	to 31/10/07	40.53
	1/09/07	to 30/11/07	48.11		1/09/07	to 30/11/07	40.52
	1/10/07	to 31/12/07	41.92		1/10/07	to 31/12/07	
	1/11/07	to 31/01/08	43.80		1/11/07	to 31/01/08	
	1/12/07	to 29/02/08	43.32		1/12/07	to 29/02/08	
	1/01/08	to 31/03/08	43.08		1/01/08	to 31/03/08	
	1/02/08	to 30/04/08	42.81		1/02/08	to 30/04/08	35.28
	1/03/08	to 31/05/08	38.66		1/03/08	to 31/05/08	32.80
	1/04/08	to 30/06/08	38.93		1/04/08	to 30/06/08	32.50
	1/05/08	to 31/07/08	37.84		1/05/08	to 31/07/08	31.19
	1/06/08	to 31/08/08	39.30		1/06/08	to 31/08/08	31.72
1/07/08	to 30/09/08	42.30	1/07/08	to 30/09/08			
			Unit Price				Unit Price
<b>Red</b>	1/07/06	to 30/09/06		<b>Summary for All</b>	1/07/06	to 30/09/06	32.09
	1/08/06	to 31/10/06			1/08/06	to 31/10/06	25.26
	1/09/06	to 30/11/06	17.20		1/09/06	to 30/11/06	25.14
	1/10/06	to 31/12/06	27.58		1/10/06	to 31/12/06	31.75
	1/11/06	to 31/01/07	27.58		1/11/06	to 31/01/07	32.08
	1/12/06	to 28/02/07	28.51		1/12/06	to 28/02/07	32.53
	1/01/07	to 31/03/07			1/01/07	to 31/03/07	32.56
	1/02/07	to 30/04/07	24.15		1/02/07	to 30/04/07	35.49
	1/03/07	to 31/05/07			1/03/07	to 31/05/07	31.17
	1/04/07	to 30/06/07	22.00		1/04/07	to 30/06/07	33.31
	1/05/07	to 31/07/07	21.76		1/05/07	to 31/07/07	32.62
	1/06/07	to 31/08/07	37.94		1/06/07	to 31/08/07	40.29
	1/07/07	to 30/09/07	33.27		1/07/07	to 30/09/07	41.49
	1/08/07	to 31/10/07	33.27		1/08/07	to 31/10/07	44.43
	1/09/07	to 30/11/07	33.73		1/09/07	to 30/11/07	44.46
	1/10/07	to 31/12/07			1/10/07	to 31/12/07	41.86
	1/11/07	to 31/01/08			1/11/07	to 31/01/08	44.96
	1/12/07	to 29/02/08			1/12/07	to 29/02/08	37.13
	1/01/08	to 31/03/08	16.50		1/01/08	to 31/03/08	22.37
	1/02/08	to 30/04/08	17.20		1/02/08	to 30/04/08	32.65
	1/03/08	to 31/05/08	16.96		1/03/08	to 31/05/08	33.59
	1/04/08	to 30/06/08	27.00		1/04/08	to 30/06/08	35.57
	1/05/08	to 31/07/08			1/05/08	to 31/07/08	35.10
	1/06/08	to 31/08/08			1/06/08	to 31/08/08	38.08
1/07/08	to 30/09/08		1/07/08	to 30/09/08	42.30		

**WALES**

# Direct Production - Average Unit Prices

January 2002 to September 2008



NB - When category is not shown - No figures available for period

**Direct Production - SCOTLAND Average Unit Prices**

<b>Green</b>			<b>Unit Price</b>
1/07/06	to	30/09/06	28.95
1/08/06	to	31/10/06	29.05
1/09/06	to	30/11/06	29.77
1/10/06	to	31/12/06	30.64
1/11/06	to	31/01/07	30.96
1/12/06	to	28/02/07	31.35
1/01/07	to	31/03/07	32.16
1/02/07	to	30/04/07	32.92
1/03/07	to	31/05/07	32.51
1/04/07	to	30/06/07	32.47
1/05/07	to	31/07/07	33.12
1/06/07	to	31/08/07	33.63
1/07/07	to	30/09/07	34.55
1/08/07	to	31/10/07	34.28
1/09/07	to	30/11/07	35.46
1/10/07	to	31/12/07	36.06
1/11/07	to	31/01/08	35.68
1/12/07	to	29/02/08	35.66
1/01/08	to	31/03/08	35.99
1/02/08	to	30/04/08	36.78
1/03/08	to	31/05/08	35.88
1/04/08	to	30/06/08	35.76
1/05/08	to	31/07/08	34.98
1/06/08	to	31/08/08	33.96
1/07/08	to	30/09/08	33.19

<b>Short Green</b>			<b>Unit Price</b>
1/07/06	to	30/09/06	
1/08/06	to	31/10/06	
1/09/06	to	30/11/06	
1/10/06	to	31/12/06	
1/11/06	to	31/01/07	
1/12/06	to	28/02/07	
1/01/07	to	31/03/07	
1/02/07	to	30/04/07	
1/03/07	to	31/05/07	
1/04/07	to	30/06/07	
1/05/07	to	31/07/07	
1/06/07	to	31/08/07	
1/07/07	to	30/09/07	
1/08/07	to	31/10/07	
1/09/07	to	30/11/07	
1/10/07	to	31/12/07	
1/11/07	to	31/01/08	
1/12/07	to	29/02/08	
1/01/08	to	31/03/08	
1/02/08	to	30/04/08	
1/03/08	to	31/05/08	
1/04/08	to	30/06/08	
1/05/08	to	31/07/08	
1/06/08	to	31/08/08	
1/07/08	to	30/09/08	

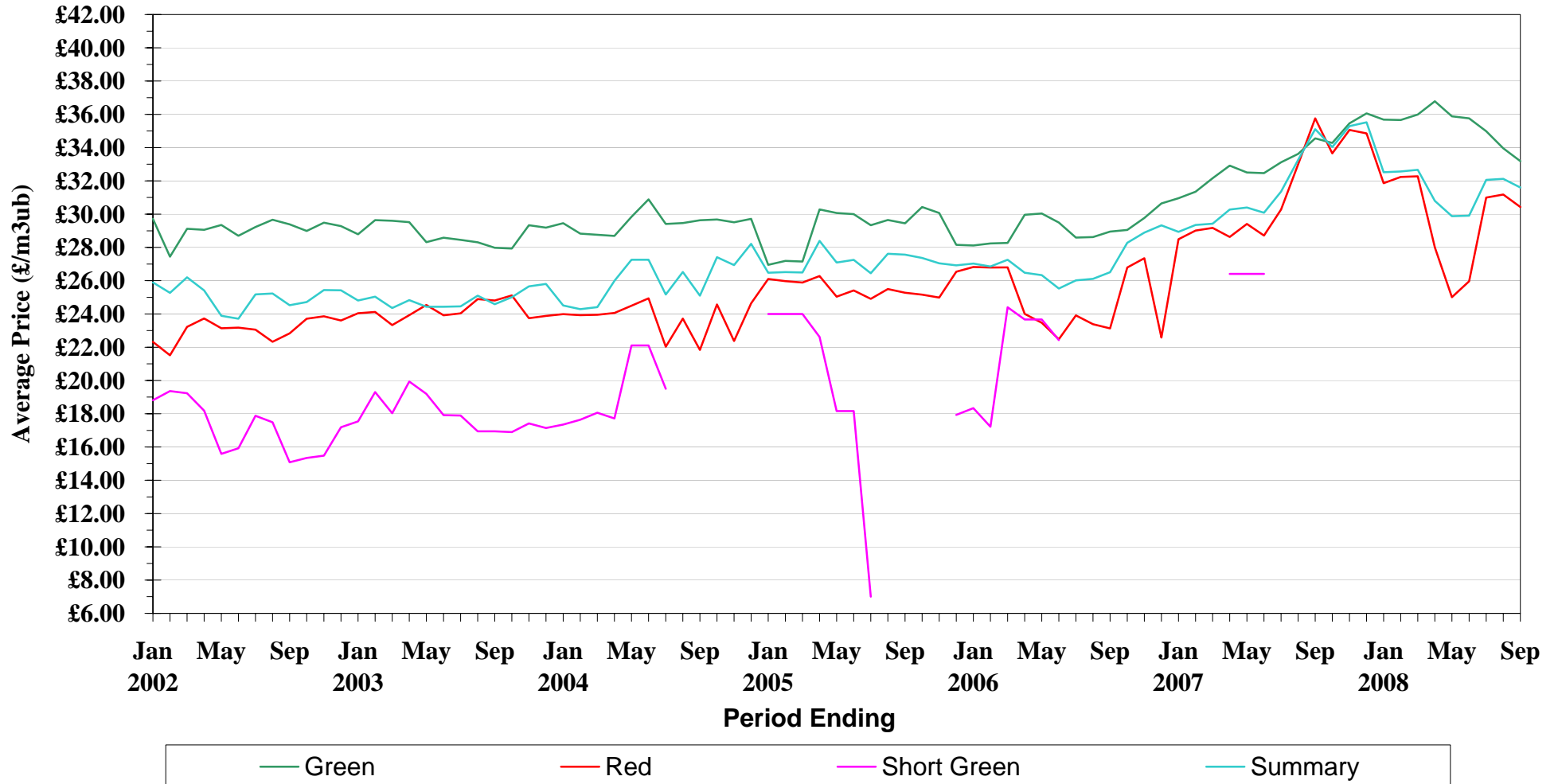
<b>Red</b>			<b>Unit Price</b>
1/07/06	to	30/09/06	23.13
1/08/06	to	31/10/06	26.79
1/09/06	to	30/11/06	27.35
1/10/06	to	31/12/06	22.58
1/11/06	to	31/01/07	28.50
1/12/06	to	28/02/07	29.02
1/01/07	to	31/03/07	29.17
1/02/07	to	30/04/07	28.63
1/03/07	to	31/05/07	29.41
1/04/07	to	30/06/07	28.71
1/05/07	to	31/07/07	30.27
1/06/07	to	31/08/07	32.99
1/07/07	to	30/09/07	35.76
1/08/07	to	31/10/07	33.65
1/09/07	to	30/11/07	35.06
1/10/07	to	31/12/07	34.85
1/11/07	to	31/01/08	31.86
1/12/07	to	29/02/08	32.23
1/01/08	to	31/03/08	32.27
1/02/08	to	30/04/08	28.00
1/03/08	to	31/05/08	25.00
1/04/08	to	30/06/08	25.96
1/05/08	to	31/07/08	31.00
1/06/08	to	31/08/08	31.18
1/07/08	to	30/09/08	30.43

<b>Summary for All</b>			<b>Unit Price</b>
1/07/06	to	30/09/06	26.51
1/08/06	to	31/10/06	28.28
1/09/06	to	30/11/06	28.89
1/10/06	to	31/12/06	29.33
1/11/06	to	31/01/07	28.93
1/12/06	to	28/02/07	29.35
1/01/07	to	31/03/07	29.43
1/02/07	to	30/04/07	30.28
1/03/07	to	31/05/07	30.40
1/04/07	to	30/06/07	30.09
1/05/07	to	31/07/07	31.35
1/06/07	to	31/08/07	33.26
1/07/07	to	30/09/07	35.11
1/08/07	to	31/10/07	34.04
1/09/07	to	30/11/07	35.29
1/10/07	to	31/12/07	35.52
1/11/07	to	31/01/08	32.52
1/12/07	to	29/02/08	32.57
1/01/08	to	31/03/08	32.67
1/02/08	to	30/04/08	30.80
1/03/08	to	31/05/08	29.88
1/04/08	to	30/06/08	29.91
1/05/08	to	31/07/08	32.06
1/06/08	to	31/08/08	32.12
1/07/08	to	30/09/08	31.60

# SCOTLAND

## Direct Production - Average Unit Prices

January 2002 to September 2008



NB - When category is not shown - No figures available for period



**STANDING SALES - GB AVERAGE UNIT PRICES**

			Unit Price (£/m3obs)				Unit Price (£/tonne)
<b>Thinning (Instalment)</b>	1/07/06	to 30/09/06	10.59	<b>Clearfell (Weight)</b>	1/07/06	to 30/09/06	9.09
	1/08/06	to 31/10/06	9.89		1/08/06	to 31/10/06	9.55
	1/09/06	to 30/11/06	15.35		1/09/06	to 30/11/06	10.58
	1/10/06	to 31/12/06	15.56		1/10/06	to 31/12/06	9.38
	1/11/06	to 31/01/07	14.97		1/11/06	to 31/01/07	11.02
	1/12/06	to 28/02/07	18.10		1/12/06	to 28/02/07	10.34
	1/01/07	to 31/03/07	16.13		1/01/07	to 31/03/07	11.20
	1/02/07	to 30/04/07	16.23		1/02/07	to 30/04/07	13.47
	1/03/07	to 31/05/07	16.39		1/03/07	to 31/05/07	15.88
	1/04/07	to 30/06/07	15.20		1/04/07	to 30/06/07	14.71
	1/05/07	to 31/07/07	15.57		1/05/07	to 31/07/07	14.69
	1/06/07	to 31/08/07	19.09		1/06/07	to 31/08/07	13.42
	1/07/07	to 30/09/07	19.61		1/07/07	to 30/09/07	14.77
	1/08/07	to 31/10/07	18.39		1/08/07	to 31/10/07	16.07
	1/09/07	to 30/11/07	7.82		1/09/07	to 30/11/07	16.54
	1/10/07	to 31/12/07	18.48		1/10/07	to 31/12/07	14.72
	1/11/07	to 31/01/08	15.20		1/11/07	to 31/01/08	15.03
	1/12/07	to 29/02/08	14.00		1/12/07	to 29/02/08	14.26
	1/01/08	to 31/03/08	18.66		1/01/08	to 31/03/08	14.66
	1/02/08	to 30/04/08	18.51		1/02/08	to 30/04/08	15.48
1/03/08	to 31/05/08	17.82	1/03/08	to 31/05/08	15.68		
1/04/08	to 30/06/08	17.12	1/04/08	to 30/06/08	14.53		
1/05/08	to 31/07/08	12.78	1/05/08	to 31/07/08	10.79		
1/06/08	to 31/08/08	11.44	1/06/08	to 31/08/08	9.48		
1/07/08	to 30/09/08	11.35	1/07/08	to 30/09/08	9.94		

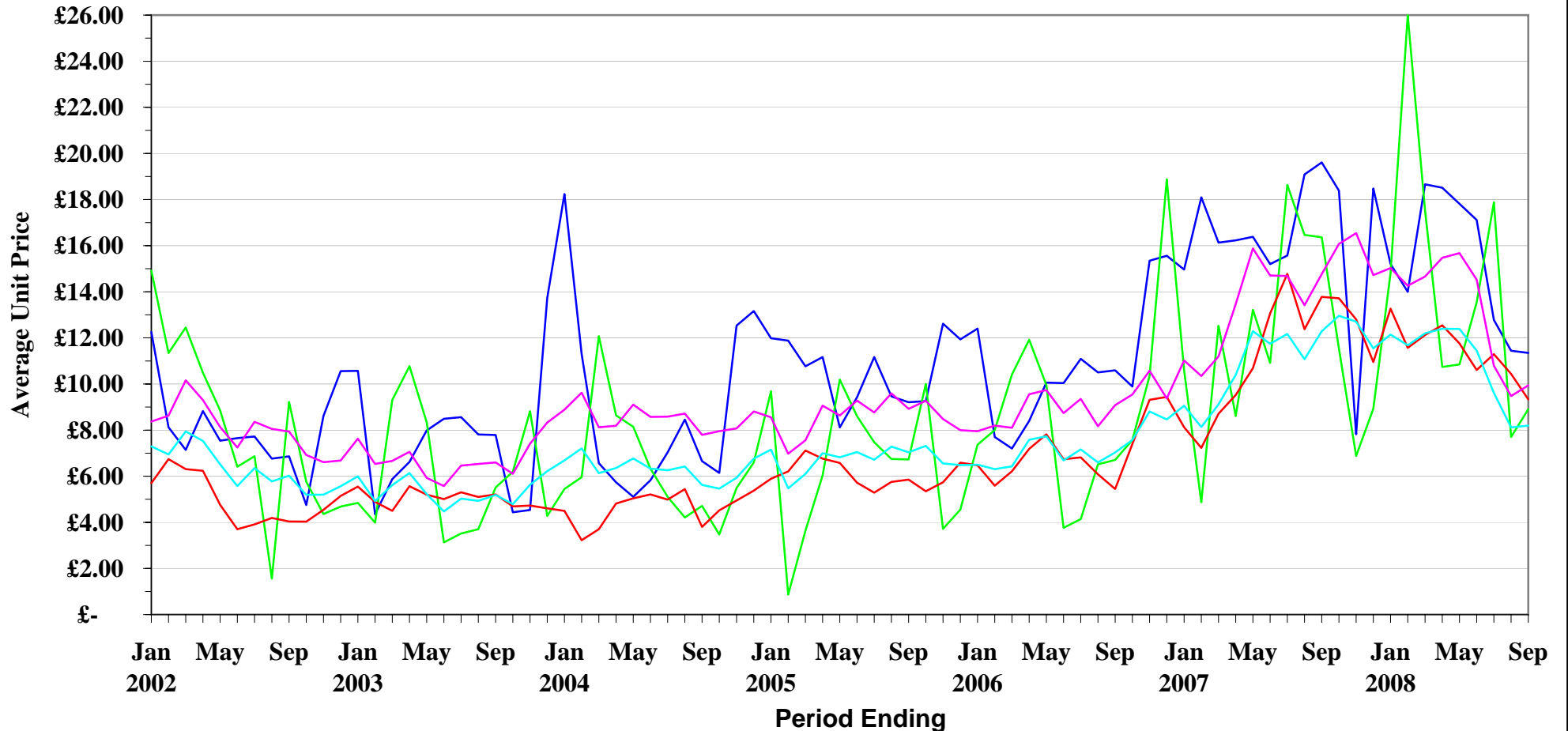
			Unit Price (£/m3obs)				Unit Price (£/m3obs)
<b>Clearfell (Instalment)</b>	1/07/06	to 30/09/06	6.71	<b>Summary</b>	1/07/06	to 30/09/06	7.03
	1/08/06	to 31/10/06	7.57		1/08/06	to 31/10/06	7.57
	1/09/06	to 30/11/06	10.35		1/09/06	to 30/11/06	8.81
	1/10/06	to 31/12/06	18.88		1/10/06	to 31/12/06	8.46
	1/11/06	to 31/01/07	10.59		1/11/06	to 31/01/07	9.06
	1/12/06	to 28/02/07	4.87		1/12/06	to 28/02/07	8.14
	1/01/07	to 31/03/07	12.52		1/01/07	to 31/03/07	9.12
	1/02/07	to 30/04/07	8.61		1/02/07	to 30/04/07	10.40
	1/03/07	to 31/05/07	13.22		1/03/07	to 31/05/07	12.29
	1/04/07	to 30/06/07	10.92		1/04/07	to 30/06/07	11.74
	1/05/07	to 31/07/07	18.63		1/05/07	to 31/07/07	12.17
	1/06/07	to 31/08/07	16.47		1/06/07	to 31/08/07	11.08
	1/07/07	to 30/09/07	16.36		1/07/07	to 30/09/07	12.29
	1/08/07	to 31/10/07	11.54		1/08/07	to 31/10/07	12.96
	1/09/07	to 30/11/07	8.94		1/09/07	to 30/11/07	12.75
	1/10/07	to 31/12/07	8.93		1/10/07	to 31/12/07	11.55
	1/11/07	to 31/01/08	14.80		1/11/07	to 31/01/08	12.15
	1/12/07	to 29/02/08	26.00		1/12/07	to 29/02/08	11.68
	1/01/08	to 31/03/08	17.53		1/01/08	to 31/03/08	12.18
	1/02/08	to 30/04/08	10.74		1/02/08	to 30/04/08	12.40
1/03/08	to 31/05/08	10.85	1/03/08	to 31/05/08	12.39		
1/04/08	to 30/06/08	13.54	1/04/08	to 30/06/08	11.45		
1/05/08	to 31/07/08	17.88	1/05/08	to 31/07/08	9.62		
1/06/08	to 31/08/08	7.70	1/06/08	to 31/08/08	8.12		
1/07/08	to 30/09/08	8.91	1/07/08	to 30/09/08	8.19		

			Unit Price (£/tonne)
<b>Thinning (Weight)</b>	1/07/06	to 30/09/06	5.45
	1/08/06	to 31/10/06	7.40
	1/11/06	to 31/01/07	9.31
	1/10/06	to 31/12/06	9.44
	1/11/06	to 31/01/07	8.12
	1/12/06	to 28/02/07	7.23
	1/01/07	to 31/03/07	8.71
	1/02/07	to 30/04/07	9.52
	1/03/07	to 31/05/07	10.69
	1/04/07	to 30/06/07	13.06
	1/05/07	to 31/07/07	14.78
	1/06/07	to 31/08/07	12.38
	1/07/07	to 30/09/07	13.78
	1/08/07	to 31/10/07	13.72
	1/09/07	to 30/11/07	12.80
	1/10/07	to 31/12/07	10.95
	1/11/07	to 31/01/08	13.27
	1/12/07	to 29/02/08	11.57
	1/01/08	to 31/03/08	11.92
	1/02/08	to 30/04/08	12.55
1/03/08	to 31/05/08	11.76	
1/04/08	to 30/06/08	10.61	
1/05/08	to 31/07/08	11.29	
1/06/08	to 31/08/08	10.44	
1/07/08	to 30/09/08	9.34	

# Standing Sales - Average Unit Price

January 2002 to September 2008

GB



— Thinning (Instalment) — Clearfell (Instalment) — Thinning (Weight) — Clearfell (Weight) — Summary

NB - When category is not shown - No figures available for period

**STANDING SALES - ENGLAND AVERAGE UNIT PRICES**

			Unit Price (£/m3obs)				Unit Price (£/tonne)
<b>Thinning (Instalment)</b>	1/07/06	to 30/09/06	10.59	<b>Clearfell (Weight)</b>	1/07/06	to 30/09/06	12.92
	1/08/06	to 31/10/06	9.89		1/08/06	to 31/10/06	10.88
	1/09/06	to 30/11/06	15.35		1/09/06	to 30/11/06	10.59
	1/10/06	to 31/12/06	15.56		1/10/06	to 31/12/06	11.52
	1/11/06	to 31/01/07	14.97		1/11/06	to 31/01/07	14.26
	1/12/06	to 28/02/07	18.10		1/12/06	to 28/02/07	14.21
	1/01/07	to 31/03/07	16.13		1/01/07	to 31/03/07	17.40
	1/02/07	to 30/04/07	16.23		1/02/07	to 30/04/07	18.81
	1/03/07	to 31/05/07	16.39		1/03/07	to 31/05/07	20.93
	1/04/07	to 30/06/07	15.20		1/04/07	to 30/06/07	19.14
	1/05/07	to 31/07/07	15.57		1/05/07	to 31/07/07	22.86
	1/06/07	to 31/08/07	19.09		1/06/07	to 31/08/07	21.01
	1/07/07	to 30/09/07	19.61		1/07/07	to 30/09/07	22.02
	1/08/06	to 31/10/06	18.39		1/08/06	to 31/10/06	18.69
	1/09/07	to 30/11/07	7.82		1/09/07	to 30/11/07	17.93
	1/10/07	to 31/12/07	18.48		1/10/07	to 31/12/07	19.37
	1/11/07	to 31/01/08	15.20		1/11/07	to 31/01/08	22.18
	1/12/07	to 29/02/08	14.00		1/12/07	to 29/02/08	15.80
	1/01/08	to 31/03/08	18.66		1/01/08	to 31/03/08	19.74
	1/02/08	to 30/04/08	18.51		1/02/08	to 30/04/08	18.86
1/03/08	to 31/05/08	17.82	1/03/08	to 31/05/08	19.85		
1/04/08	to 30/06/08	17.12	1/04/08	to 30/06/08	20.00		
1/05/08	to 31/07/08	14.47	1/05/08	to 31/07/08	18.91		
1/06/08	to 31/08/08	12.34	1/06/08	to 31/08/08	15.88		
1/07/08	to 30/09/08	12.21	1/07/08	to 30/09/08	15.95		

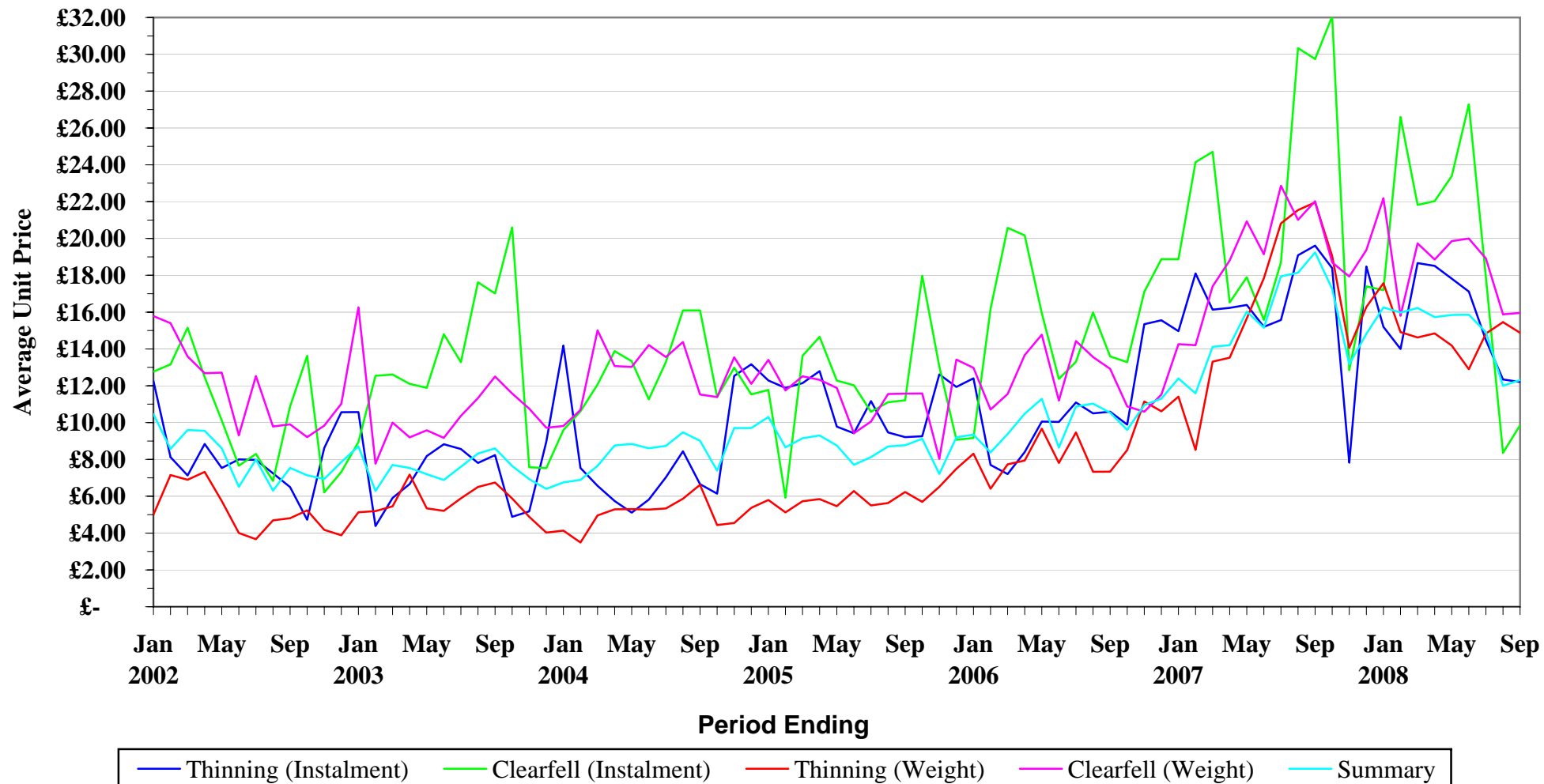
			Unit Price (£/m3obs)				Unit Price (£/m3obs)
<b>Clearfell (Instalment)</b>	1/07/06	to 30/09/06	13.59	<b>Summary</b>	1/07/06	to 30/09/06	10.54
	1/08/06	to 31/10/06	13.28		1/08/06	to 31/10/06	9.60
	1/09/06	to 30/11/06	17.10		1/09/06	to 30/11/06	10.95
	1/10/06	to 31/12/06	18.88		1/10/06	to 31/12/06	11.30
	1/11/06	to 31/01/07	18.88		1/11/06	to 31/01/07	12.40
	1/12/06	to 28/02/07	24.14		1/12/06	to 28/02/07	11.59
	1/01/07	to 31/03/07	24.71		1/01/07	to 31/03/07	14.12
	1/02/07	to 30/04/07	16.53		1/02/07	to 30/04/07	13.83
	1/03/07	to 31/05/07	17.89		1/03/07	to 31/05/07	16.03
	1/04/07	to 30/06/07	15.58		1/04/07	to 30/06/07	15.15
	1/05/07	to 31/07/07	18.70		1/05/07	to 31/07/07	17.94
	1/06/07	to 31/08/07	30.34		1/06/07	to 31/08/07	16.55
	1/07/07	to 30/09/07	29.75		1/07/07	to 30/09/07	19.24
	1/08/06	to 31/10/06	32.06		1/08/06	to 31/10/06	17.26
	1/09/07	to 30/11/07	12.85		1/09/07	to 30/11/07	13.17
	1/10/07	to 31/12/07	17.40		1/10/07	to 31/12/07	14.81
	1/11/07	to 31/01/08	17.19		1/11/07	to 31/01/08	16.25
	1/12/07	to 29/02/08	26.59		1/12/07	to 29/02/08	15.97
	1/01/08	to 31/03/08	21.82		1/01/08	to 31/03/08	16.22
	1/02/08	to 30/04/08	22.03		1/02/08	to 30/04/08	15.73
1/03/08	to 31/05/08	23.38	1/03/08	to 31/05/08	15.85		
1/04/08	to 30/06/08	27.28	1/04/08	to 30/06/08	15.86		
1/05/08	to 31/07/08	17.88	1/05/08	to 31/07/08	14.91		
1/06/08	to 31/08/08	8.36	1/06/08	to 31/08/08	12.00		
1/07/08	to 30/09/08	9.85	1/07/08	to 30/09/08	12.31		

			Unit Price (£/tonne)
<b>Thinning (Weight)</b>	1/07/06	to 30/09/06	7.33
	1/08/06	to 31/10/06	8.51
	1/09/06	to 30/11/06	11.15
	1/10/06	to 31/12/06	10.61
	1/11/06	to 31/01/07	11.41
	1/12/06	to 28/02/07	8.52
	1/01/07	to 31/03/07	13.31
	1/02/07	to 30/04/07	13.52
	1/03/07	to 31/05/07	15.66
	1/04/07	to 30/06/07	17.84
	1/05/07	to 31/07/07	20.82
	1/06/07	to 31/08/07	21.54
	1/07/07	to 30/09/07	21.96
	1/08/06	to 31/10/06	19.04
	1/09/07	to 30/11/07	14.06
	1/10/07	to 31/12/07	16.28
	1/11/07	to 31/01/08	17.57
	1/12/07	to 29/02/08	14.91
	1/01/08	to 31/03/08	14.63
	1/02/08	to 30/04/08	14.84
1/03/08	to 31/05/08	14.18	
1/04/08	to 30/06/08	12.90	
1/05/08	to 31/07/08	14.83	
1/06/08	to 31/08/08	15.46	
1/07/08	to 30/09/08	14.88	

**ENGLAND**

# Standing Sales - Average Unit Price

January 2002 to September 2008



NB - When category is not shown - No figures available for period

**STANDING SALES - WALES AVERAGE UNIT PRICES**

			Unit Price (£/m3obs)				Unit Price (£/tonne)
<b>Thinning (Instalment)</b>	1/07/06	to 30/09/06		<b>Clearfell (Weight)</b>	1/07/06	to 30/09/06	2.97
	1/08/06	to 31/10/06			1/08/06	to 31/10/06	4.37
	1/09/06	to 30/11/06			1/09/06	to 30/11/06	5.23
	1/10/06	to 31/12/06			1/10/06	to 31/12/06	13.35
	1/11/06	to 31/01/07			1/11/06	to 31/01/07	13.24
	1/12/06	to 28/02/07			1/12/06	to 28/02/07	11.74
	1/01/07	to 31/03/07			1/01/07	to 31/03/07	5.81
	1/02/07	to 30/04/07			1/02/07	to 30/04/07	15.58
	1/03/07	to 31/05/07			1/03/07	to 31/05/07	16.35
	1/04/07	to 30/06/07			1/04/07	to 30/06/07	20.62
	1/05/07	to 31/07/07			1/05/07	to 31/07/07	21.25
	1/06/07	to 31/08/07			1/06/07	to 31/08/07	22.43
	1/07/07	to 30/09/07			1/07/07	to 30/09/07	22.00
	1/08/06	to 31/10/06			1/08/06	to 31/10/06	24.89
	1/09/07	to 30/11/07			1/09/07	to 30/11/07	25.99
	1/10/07	to 31/12/07			1/10/07	to 31/12/07	22.83
	1/11/07	to 31/01/08			1/11/07	to 31/01/08	22.65
	1/12/07	to 29/02/08			1/12/07	to 29/02/08	21.81
	1/01/08	to 31/03/08			1/01/08	to 31/03/08	12.34
	1/02/08	to 30/04/08			1/02/08	to 30/04/08	25.62
1/03/08	to 31/05/08		1/03/08	to 31/05/08	25.05		
1/04/08	to 30/06/08		1/04/08	to 30/06/08	20.21		
1/05/08	to 31/07/08		1/05/08	to 31/07/08	9.16		
1/06/08	to 31/08/08		1/06/08	to 31/08/08	8.03		
1/07/08	to 30/09/08		1/07/08	to 30/09/08	8.23		

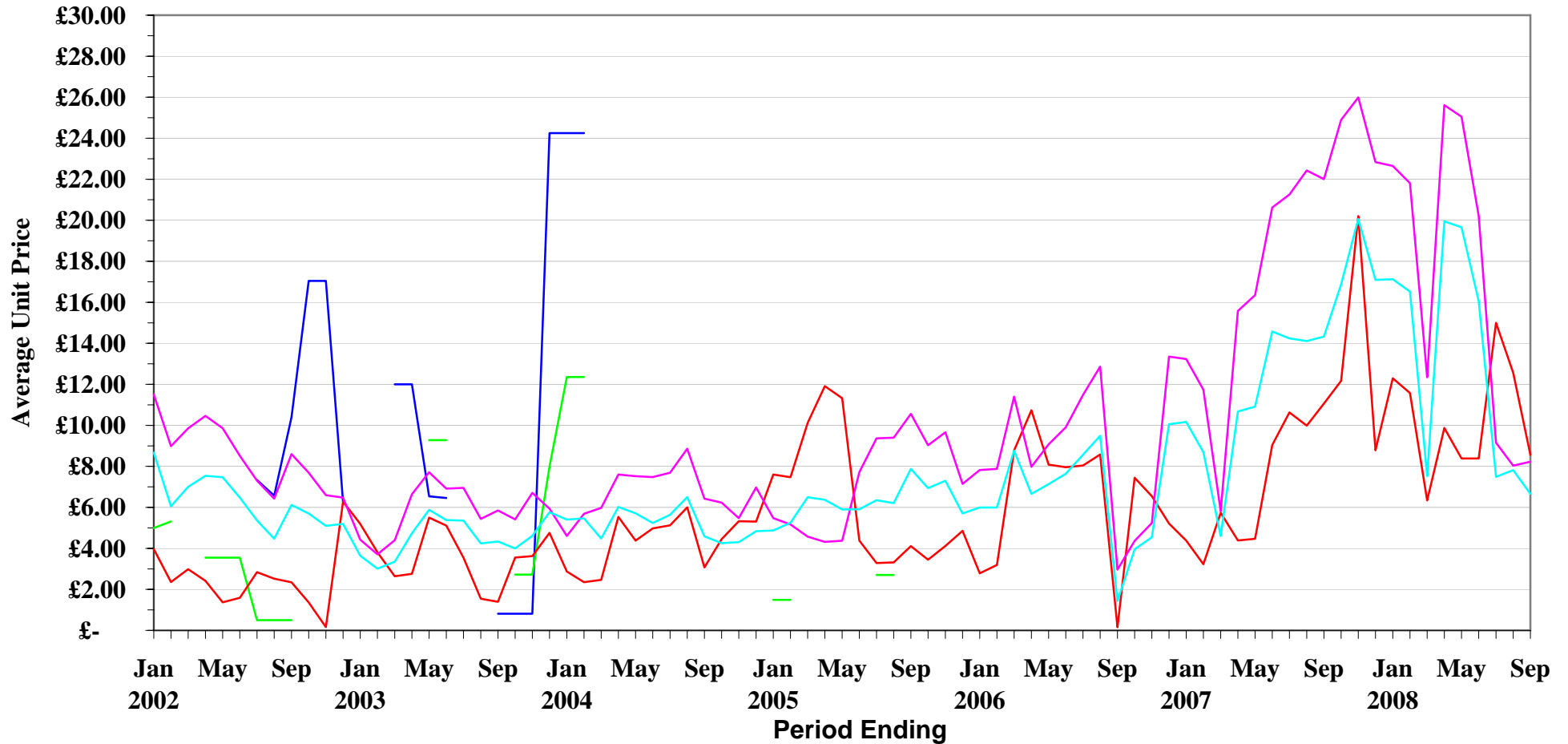
			Unit Price (£/m3obs)				Unit Price (£/m3obs)
<b>Clearfell (Instalment)</b>	1/07/06	to 30/09/06		<b>Summary</b>	1/07/06	to 30/09/06	1.43
	1/08/06	to 31/10/06			1/08/06	to 31/10/06	3.95
	1/09/06	to 30/11/06			1/09/06	to 30/11/06	4.54
	1/10/06	to 31/12/06			1/10/06	to 31/12/06	10.05
	1/11/06	to 31/01/07			1/11/06	to 31/01/07	10.17
	1/12/06	to 28/02/07			1/12/06	to 28/02/07	8.69
	1/01/07	to 31/03/07			1/01/07	to 31/03/07	4.60
	1/02/07	to 30/04/07			1/02/07	to 30/04/07	10.68
	1/03/07	to 31/05/07			1/03/07	to 31/05/07	10.91
	1/04/07	to 30/06/07			1/04/07	to 30/06/07	14.58
	1/05/07	to 31/07/07			1/05/07	to 31/07/07	14.24
	1/06/07	to 31/08/07			1/06/07	to 31/08/07	14.11
	1/07/07	to 30/09/07			1/07/07	to 30/09/07	14.33
	1/08/06	to 31/10/06			1/08/06	to 31/10/06	16.88
	1/09/07	to 30/11/07			1/09/07	to 30/11/07	20.06
	1/10/07	to 31/12/07			1/10/07	to 31/12/07	17.09
	1/11/07	to 31/01/08			1/11/07	to 31/01/08	17.12
	1/12/07	to 29/02/08			1/12/07	to 29/02/08	16.52
	1/01/08	to 31/03/08			1/01/08	to 31/03/08	7.52
	1/02/08	to 30/04/08			1/02/08	to 30/04/08	19.95
1/03/08	to 31/05/08		1/03/08	to 31/05/08	19.66		
1/04/08	to 30/06/08		1/04/08	to 30/06/08	16.05		
1/05/08	to 31/07/08		1/05/08	to 31/07/08	7.49		
1/06/08	to 31/08/08		1/06/08	to 31/08/08	7.81		
1/07/08	to 30/09/08		1/07/08	to 30/09/08	6.66		

			Unit Price (£/tonne)
<b>Thinning (Weight)</b>	1/07/06	to 30/09/06	0.16
	1/08/06	to 31/10/06	7.44
	1/09/06	to 30/11/06	6.54
	1/10/06	to 31/12/06	5.21
	1/11/06	to 31/01/07	4.38
	1/12/06	to 28/02/07	3.23
	1/01/07	to 31/03/07	5.74
	1/02/07	to 30/04/07	4.38
	1/03/07	to 31/05/07	4.46
	1/04/07	to 30/06/07	9.04
	1/05/07	to 31/07/07	10.63
	1/06/07	to 31/08/07	9.99
	1/07/07	to 30/09/07	11.06
	1/08/06	to 31/10/06	12.17
	1/09/07	to 30/11/07	20.21
	1/10/07	to 31/12/07	8.78
	1/11/07	to 31/01/08	12.30
	1/12/07	to 29/02/08	11.57
	1/01/08	to 31/03/08	6.34
	1/02/08	to 30/04/08	
1/03/08	to 31/05/08	8.38	
1/04/08	to 30/06/08	8.38	
1/05/08	to 31/07/08		
1/06/08	to 31/08/08	12.56	
1/07/08	to 30/09/08	8.56	

**WALES**

# Standing Sales - Average Unit Price

January 2002 to September 2008



— Thinning (Instalment) — Clearfell (Instalment) — Thinning (Weight) — Clearfell (Weight) — Summary

NB - When category is not shown - No figures available for period

**STANDING SALES - SCOTLAND AVERAGE UNIT PRICES**

			Unit Price (£/m3obs)				Unit Price (£/tonne)
<b>Thinning (Instalment)</b>	1/07/06	to 30/09/06		<b>Clearfell (Weight)</b>	1/07/06	to 30/09/06	9.12
	1/08/06	to 31/10/06			1/08/06	to 31/10/06	9.49
	1/09/06	to 30/11/06			1/09/06	to 30/11/06	11.04
	1/10/06	to 31/12/06			1/10/06	to 31/12/06	8.29
	1/11/06	to 31/01/07			1/11/06	to 31/01/07	9.50
	1/12/06	to 28/02/07			1/12/06	to 28/02/07	9.28
	1/01/07	to 31/03/07			1/01/07	to 31/03/07	9.03
	1/02/07	to 30/04/07			1/02/07	to 30/04/07	11.79
	1/03/07	to 31/05/07			1/03/07	to 31/05/07	12.95
	1/04/07	to 30/06/07			1/04/07	to 30/06/07	10.92
	1/05/07	to 31/07/07			1/05/07	to 31/07/07	9.04
	1/06/07	to 31/08/07			1/06/07	to 31/08/07	10.04
	1/07/07	to 30/09/07			1/07/07	to 30/09/07	12.35
	1/08/06	to 31/10/06			1/08/06	to 31/10/06	13.83
	1/09/07	to 30/11/07			1/09/07	to 30/11/07	14.86
	1/10/07	to 31/12/07			1/10/07	to 31/12/07	12.53
	1/11/07	to 31/01/08			1/11/07	to 31/01/08	12.39
	1/12/07	to 29/02/08			1/12/07	to 29/02/08	12.07
	1/01/08	to 31/03/08			1/01/08	to 31/03/08	11.85
	1/02/08	to 30/04/08			1/02/08	to 30/04/08	12.63
	1/03/08	to 31/05/08			1/03/08	to 31/05/08	10.90
	1/04/08	to 30/06/08			1/04/08	to 30/06/08	10.87
	1/05/08	to 31/07/08			1/05/08	to 31/07/08	8.30
	1/06/08	to 31/08/08			1/06/08	to 31/08/08	7.93
1/07/08	to 30/09/08		1/07/08	to 30/09/08	8.92		

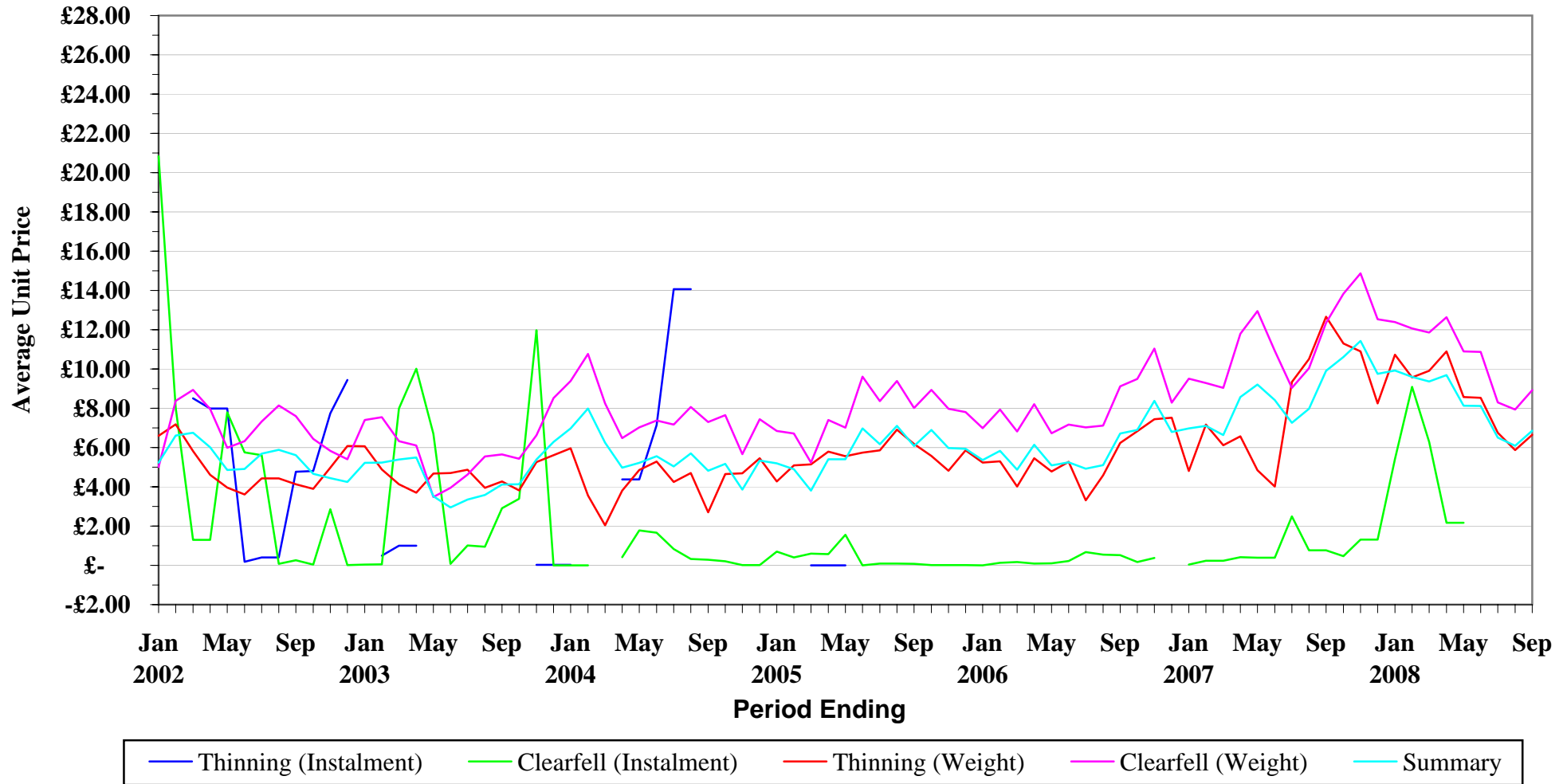
			Unit Price (£/m3obs)				Unit Price (£/m3obs)
<b>Clearfell (Instalment)</b>	1/07/06	to 30/09/06	0.52	<b>Summary</b>	1/07/06	to 30/09/06	6.71
	1/08/06	to 31/10/06	0.16		1/08/06	to 31/10/06	6.90
	1/09/06	to 30/11/06	0.38		1/09/06	to 30/11/06	8.38
	1/10/06	to 31/12/06			1/10/06	to 31/12/06	6.79
	1/11/06	to 31/01/07	0.04		1/11/06	to 31/01/07	6.98
	1/12/06	to 28/02/07	0.24		1/12/06	to 28/02/07	7.10
	1/01/07	to 31/03/07	0.24		1/01/07	to 31/03/07	6.64
	1/02/07	to 30/04/07	0.42		1/02/07	to 30/04/07	8.57
	1/03/07	to 31/05/07	0.39		1/03/07	to 31/05/07	9.21
	1/04/07	to 30/06/07	0.39		1/04/07	to 30/06/07	8.41
	1/05/07	to 31/07/07			1/05/07	to 31/07/07	7.26
	1/06/07	to 31/08/07			1/06/07	to 31/08/07	7.97
	1/07/07	to 30/09/07			1/07/07	to 30/09/07	9.91
	1/08/06	to 31/10/06			1/08/06	to 31/10/06	10.60
	1/09/07	to 30/11/07			1/09/07	to 30/11/07	11.43
	1/10/07	to 31/12/07	1.31		1/10/07	to 31/12/07	9.76
	1/11/07	to 31/01/08	5.42		1/11/07	to 31/01/08	9.92
	1/12/07	to 29/02/08			1/12/07	to 29/02/08	9.59
	1/01/08	to 31/03/08	6.29		1/01/08	to 31/03/08	9.36
	1/02/08	to 30/04/08	2.16		1/02/08	to 30/04/08	9.68
	1/03/08	to 31/05/08	2.16		1/03/08	to 31/05/08	8.13
	1/04/08	to 30/06/08			1/04/08	to 30/06/08	8.12
	1/05/08	to 31/07/08			1/05/08	to 31/07/08	6.51
	1/06/08	to 31/08/08			1/06/08	to 31/08/08	6.09
1/07/08	to 30/09/08		1/07/08	to 30/09/08	6.85		

			Unit Price (£/tonne)
<b>Thinning (Weight)</b>	1/07/06	to 30/09/06	6.23
	1/08/06	to 31/10/06	6.83
	1/09/06	to 30/11/06	7.44
	1/10/06	to 31/12/06	7.52
	1/11/06	to 31/01/07	4.81
	1/12/06	to 28/02/07	7.17
	1/01/07	to 31/03/07	6.11
	1/02/07	to 30/04/07	6.57
	1/03/07	to 31/05/07	4.85
	1/04/07	to 30/06/07	4.01
	1/05/07	to 31/07/07	9.34
	1/06/07	to 31/08/07	10.50
	1/07/07	to 30/09/07	12.66
	1/08/06	to 31/10/06	11.30
	1/09/07	to 30/11/07	10.90
	1/10/07	to 31/12/07	8.25
	1/11/07	to 31/01/08	10.73
	1/12/07	to 29/02/08	9.57
	1/01/08	to 31/03/08	9.91
	1/02/08	to 30/04/08	10.90
	1/03/08	to 31/05/08	8.57
	1/04/08	to 30/06/08	8.53
	1/05/08	to 31/07/08	6.75
	1/06/08	to 31/08/08	5.87
1/07/08	to 30/09/08	6.65	

# SCOTLAND

## Standing Sales - Average Unit Price

January 2002 to September 2008



NB - When category is not shown - No figures available for period



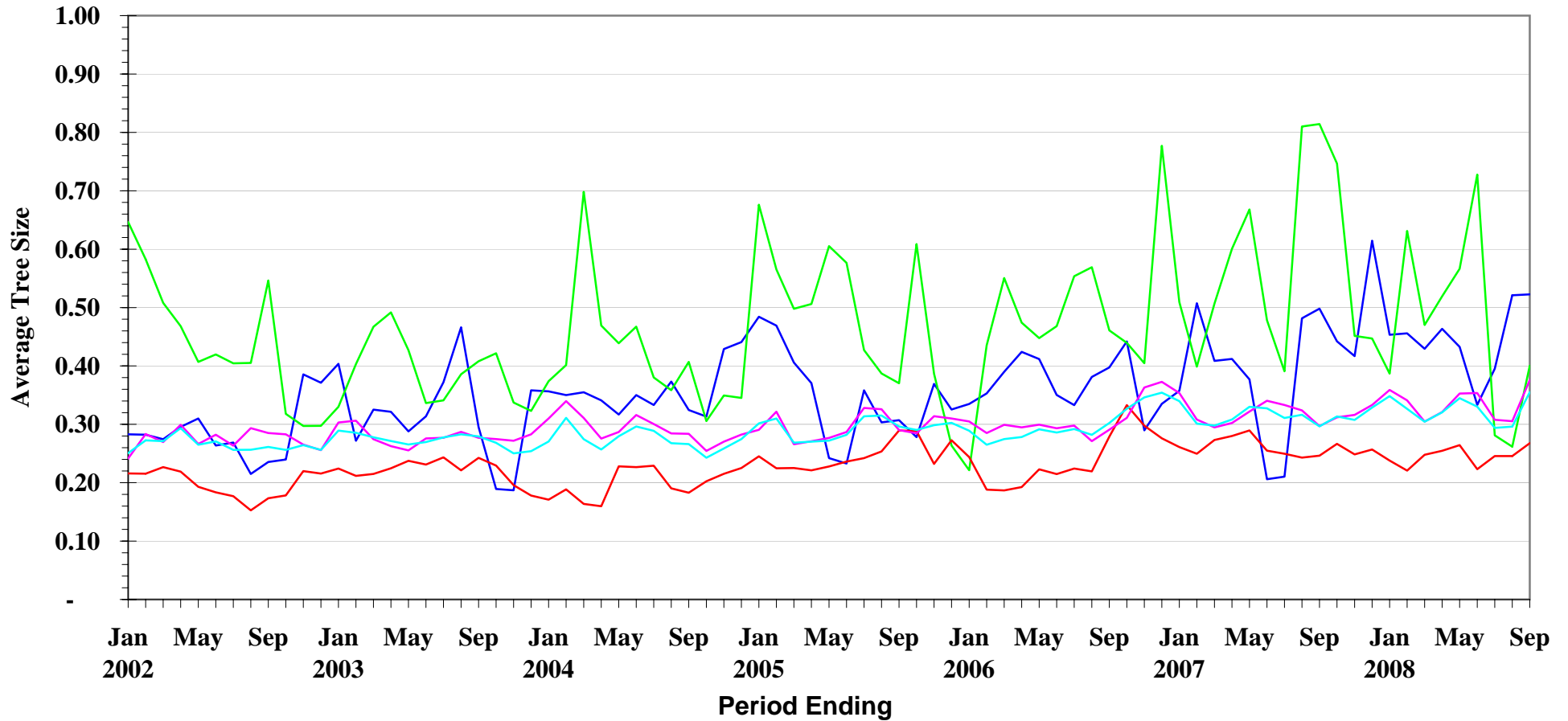
**STANDING SALES - GB AVERAGE TREE SIZE**

			Average Tree Size				Average Tree Size
<b>Thinning (Instalment)</b>	1/07/06	to 30/09/06	0.40	<b>Clearfell (Weight)</b>	1/07/06	to 30/09/06	0.29
	1/08/06	to 31/10/06	0.44		1/08/06	to 31/10/06	0.31
	1/09/06	to 30/11/06	0.29		1/09/06	to 30/11/06	0.36
	1/10/06	to 31/12/06	0.34		1/10/06	to 31/12/06	0.37
	1/11/06	to 31/01/07	0.36		1/11/06	to 31/01/07	0.35
	1/12/06	to 28/02/07	0.51		1/12/06	to 28/02/07	0.31
	1/01/07	to 31/03/07	0.41		1/01/07	to 31/03/07	0.29
	1/02/07	to 30/04/07	0.41		1/02/07	to 30/04/07	0.30
	1/03/07	to 31/05/07	0.38		1/03/07	to 31/05/07	0.32
	1/04/07	to 30/06/07	0.21		1/04/07	to 30/06/07	0.34
	1/05/07	to 31/07/07	0.21		1/05/07	to 31/07/07	0.33
	1/06/07	to 31/08/07	0.48		1/06/07	to 31/08/07	0.32
	1/07/07	to 30/09/07	0.50		1/07/07	to 30/09/07	0.30
	1/08/07	to 31/10/07	0.44		1/08/07	to 31/10/07	0.31
	1/09/07	to 30/11/07	0.42		1/09/07	to 30/11/07	0.32
	1/10/07	to 31/12/07	0.61		1/10/07	to 31/12/07	0.33
	1/11/07	to 31/01/08	0.45		1/11/07	to 31/01/08	0.36
	1/12/07	to 29/02/08	0.46		1/12/07	to 29/02/08	0.34
	1/01/08	to 31/03/08	0.43		1/01/08	to 31/03/08	0.30
	1/02/08	to 30/04/08	0.46		1/02/08	to 30/04/08	0.32
1/03/08	to 31/05/08	0.43	1/03/08	to 31/05/08	0.35		
1/04/08	to 30/06/08	0.33	1/04/08	to 30/06/08	0.35		
1/05/08	to 31/07/08	0.40	1/05/08	to 31/07/08	0.31		
1/06/08	to 31/08/08	0.52	1/06/08	to 31/08/08	0.31		
1/07/08	to 30/09/08	0.52	1/07/08	to 30/09/08	0.38		
			Average Tree Size				Average Tree Size
<b>Clearfell (Instalment)</b>	1/07/06	to 30/09/06	0.46	<b>Summary</b>	1/07/06	to 30/09/06	0.30
	1/08/06	to 31/10/06	0.44		1/08/06	to 31/10/06	0.33
	1/09/06	to 30/11/06	0.40		1/09/06	to 30/11/06	0.35
	1/10/06	to 31/12/06	0.78		1/10/06	to 31/12/06	0.35
	1/11/06	to 31/01/07	0.51		1/11/06	to 31/01/07	0.34
	1/12/06	to 28/02/07	0.40		1/12/06	to 28/02/07	0.30
	1/01/07	to 31/03/07	0.51		1/01/07	to 31/03/07	0.30
	1/02/07	to 30/04/07	0.60		1/02/07	to 30/04/07	0.31
	1/03/07	to 31/05/07	0.67		1/03/07	to 31/05/07	0.33
	1/04/07	to 30/06/07	0.48		1/04/07	to 30/06/07	0.33
	1/05/07	to 31/07/07	0.39		1/05/07	to 31/07/07	0.31
	1/06/07	to 31/08/07	0.20		1/06/07	to 31/08/07	0.31
	1/07/07	to 30/09/07	0.81		1/07/07	to 30/09/07	0.30
	1/08/07	to 31/10/07	0.75		1/08/07	to 31/10/07	0.31
	1/09/07	to 30/11/07	0.45		1/09/07	to 30/11/07	0.31
	1/10/07	to 31/12/07	0.45		1/10/07	to 31/12/07	0.33
	1/11/07	to 31/01/08	0.39		1/11/07	to 31/01/08	0.35
	1/12/07	to 29/02/08	0.63		1/12/07	to 29/02/08	0.33
	1/01/08	to 31/03/08	0.47		1/01/08	to 31/03/08	0.30
	1/02/08	to 30/04/08	0.52		1/02/08	to 30/04/08	0.32
1/03/08	to 31/05/08	0.57	1/03/08	to 31/05/08	0.34		
1/04/08	to 30/06/08	0.73	1/04/08	to 30/06/08	0.33		
1/05/08	to 31/07/08	0.28	1/05/08	to 31/07/08	0.29		
1/06/08	to 31/08/08	0.26	1/06/08	to 31/08/08	0.30		
1/07/08	to 30/09/08	0.40	1/07/08	to 30/09/08	0.36		
			Average Tree Size				Average Tree Size
<b>Thinning (Weight)</b>	1/07/06	to 30/09/06	0.28				
	1/08/06	to 31/10/06	0.33				
	1/11/06	to 31/01/07	0.30				
	1/10/06	to 31/12/06	0.28				
	1/11/06	to 31/01/07	0.26				
	1/12/06	to 28/02/07	0.25				
	1/01/07	to 31/03/07	0.27				
	1/02/07	to 30/04/07	0.28				
	1/03/07	to 31/05/07	0.29				
	1/04/07	to 30/06/07	0.25				
	1/05/07	to 31/07/07	0.25				
	1/06/07	to 31/08/07	0.24				
	1/07/07	to 30/09/07	0.25				
	1/08/07	to 31/10/07	0.27				
	1/09/07	to 30/11/07	0.25				
	1/10/07	to 31/12/07	0.26				
	1/11/07	to 31/01/08	0.24				
	1/12/07	to 29/02/08	0.22				
	1/01/08	to 31/03/08	0.25				
	1/02/08	to 30/04/08	0.25				
1/03/08	to 31/05/08	0.26					
1/04/08	to 30/06/08	0.22					
1/05/08	to 31/07/08	0.25					
1/06/08	to 31/08/08	0.25					
1/07/08	to 30/09/08	0.27					

GB

# Standing Sales - Average Tree Sizes

January 2002 to September 2008



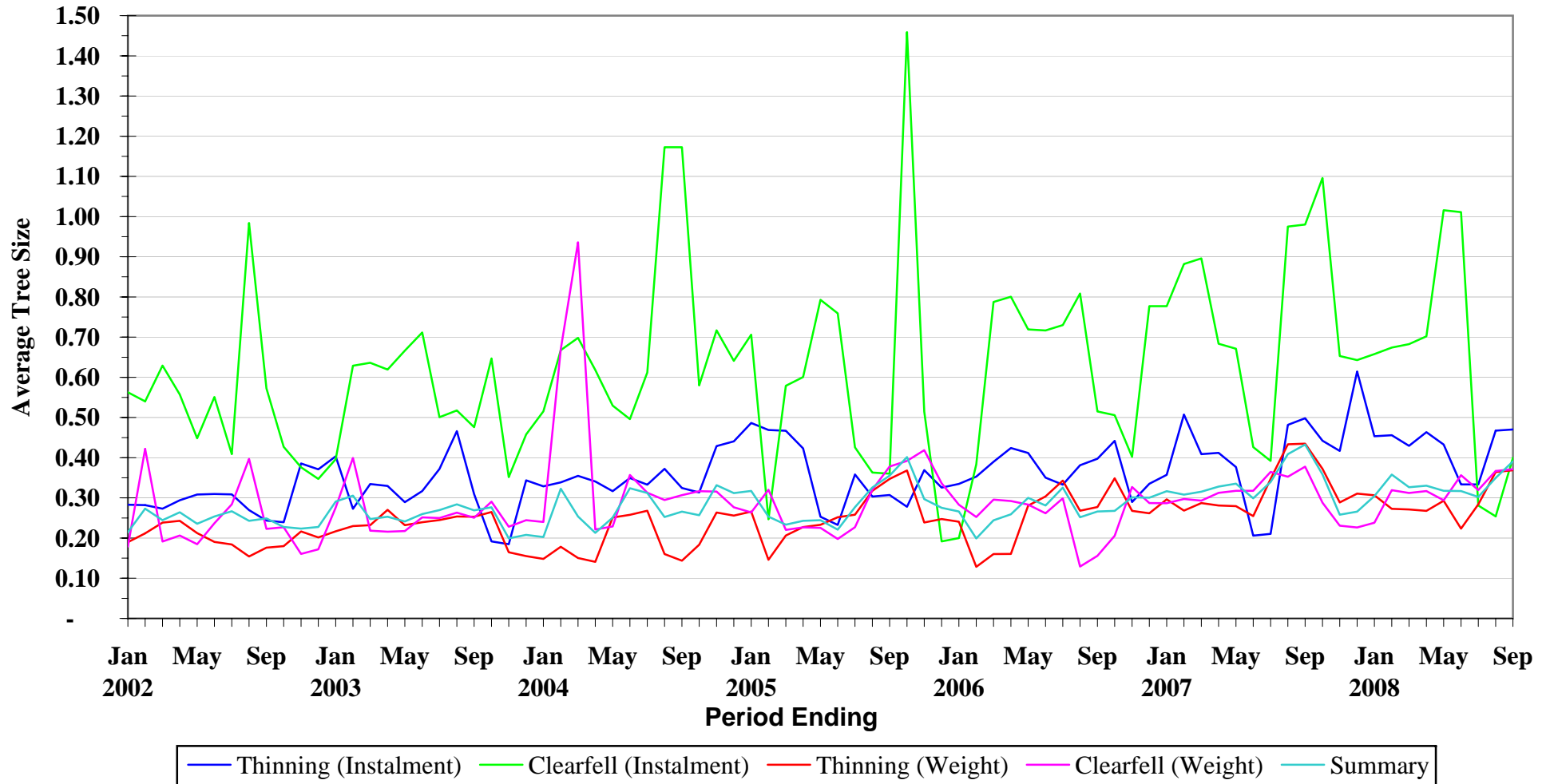
— Thinning (Instalment) — Clearfell (Instalment) — Thinning (Weight) — Clearfell (Weight) — Summary

NB - When category is not shown - No figures available for period

**ENGLAND**

# Standing Sales - Average Tree Sizes

January 2002 to September 2008

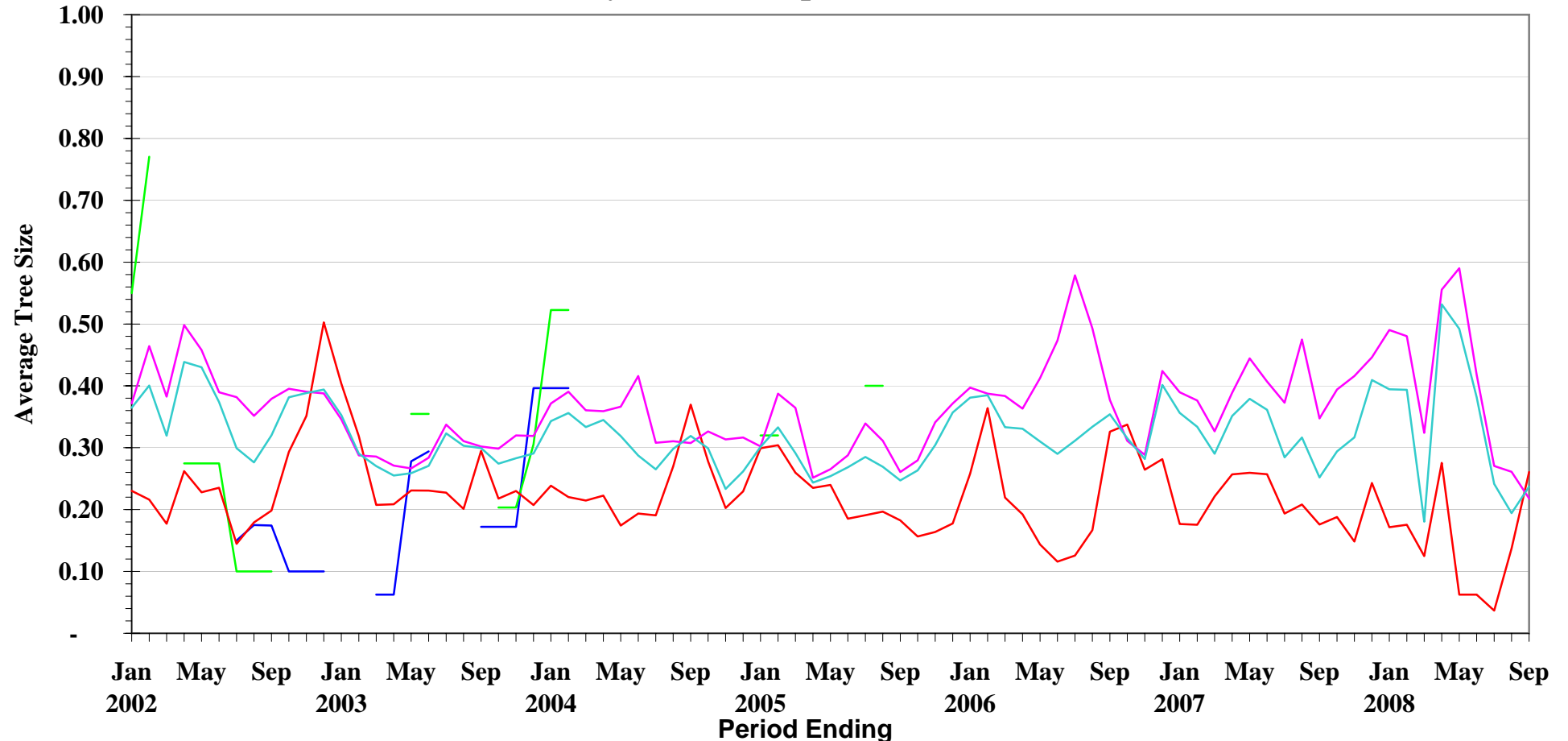


NB - When category is not shown - No figures available for period

**WALES**

# Standing Sales - Average Tree Sizes

January 2002 to September 2008



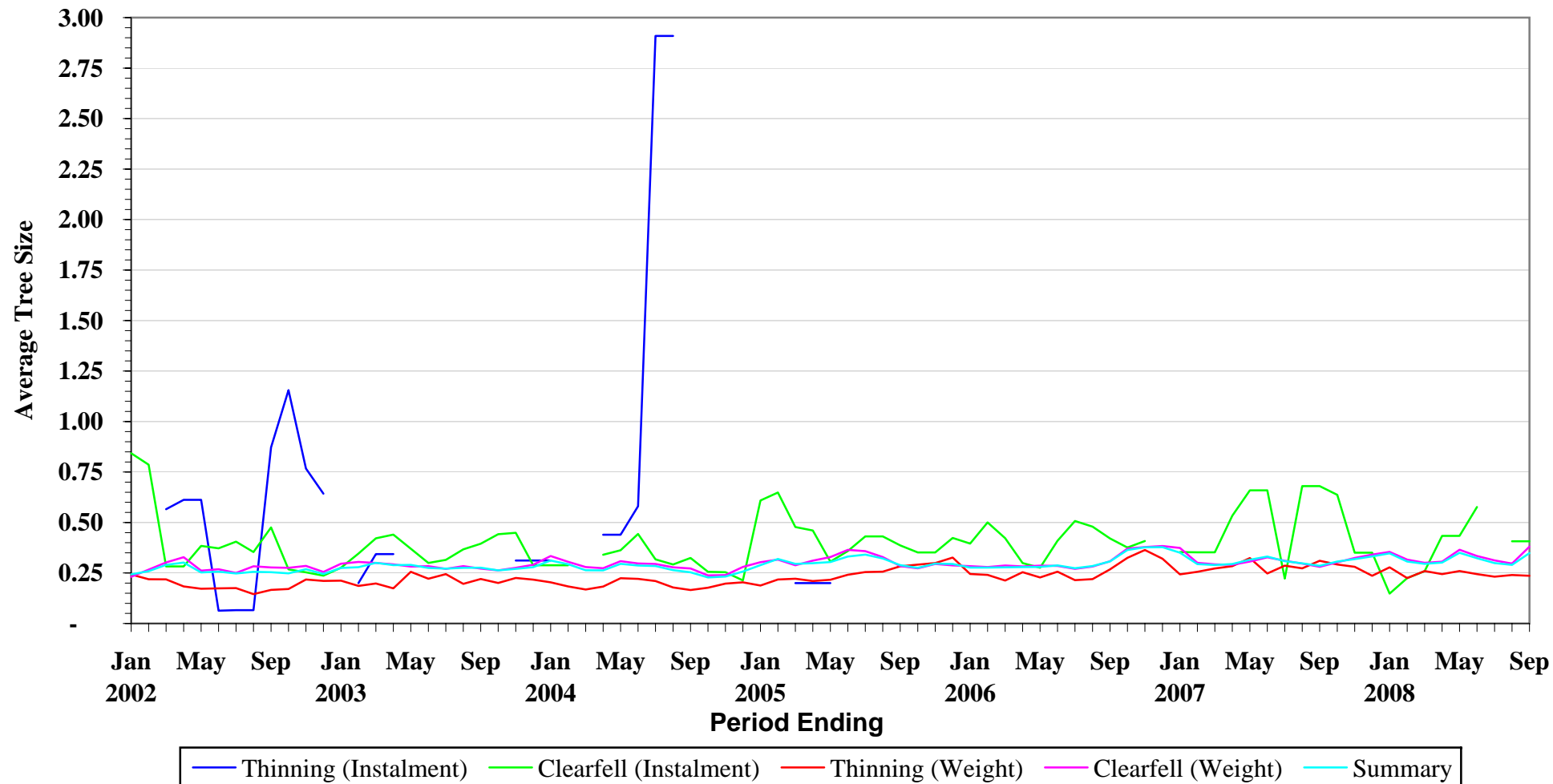
— Thinning (Instalment) — Clearfell (Instalment) — Thinning (Weight) — Clearfell (Weight) — Summary

NB - When category is not shown - No figures available for period

# SCOTLAND

## Standing Sales - Average Tree Sizes

January 2002 to September 2008



NB - When category is not shown - No figures available for period