

Direct Production - GB Average Unit Prices

Green			Unit Price
1/09/06	to	30/11/06	30.30
1/10/06	to	31/12/06	30.38
1/11/06	to	31/01/07	30.58
1/12/06	to	28/02/07	32.49
1/01/07	to	31/03/07	33.77
1/02/07	to	30/04/07	35.90
1/03/07	to	31/05/07	35.26
1/04/07	to	30/06/07	35.40
1/05/07	to	31/07/07	35.78
1/06/07	to	31/08/07	37.61
1/07/07	to	30/09/07	38.84
1/08/07	to	31/10/07	39.49
1/09/07	to	30/11/07	39.47
1/10/07	to	31/12/07	38.27
1/11/07	to	31/01/08	37.25
1/12/07	to	29/02/08	36.89
1/01/08	to	31/03/08	37.75
1/02/08	to	30/04/08	38.52
1/03/08	to	31/05/08	37.91
1/04/08	to	30/06/08	37.77
1/05/08	to	31/07/08	37.96
1/06/08	to	31/08/08	36.78
1/07/08	to	30/09/08	34.46
1/08/08	to	31/10/08	32.98
1/09/08	to	30/11/08	32.13

Short Green A			Unit Price
1/09/06	to	30/11/06	25.59
1/10/06	to	31/12/06	27.88
1/11/06	to	31/01/07	28.05
1/12/06	to	28/02/07	31.24
1/01/07	to	31/03/07	30.52
1/02/07	to	30/04/07	30.46
1/03/07	to	31/05/07	29.85
1/04/07	to	30/06/07	29.90
1/05/07	to	31/07/07	29.79
1/06/07	to	31/08/07	33.60
1/07/07	to	30/09/07	35.33
1/08/07	to	31/10/07	37.78
1/09/07	to	30/11/07	38.61
1/10/07	to	31/12/07	35.74
1/11/07	to	31/01/08	31.37
1/12/07	to	29/02/08	28.39
1/01/08	to	31/03/08	33.01
1/02/08	to	30/04/08	28.81
1/03/08	to	31/05/08	29.31
1/04/08	to	30/06/08	29.38
1/05/08	to	31/07/08	30.86
1/06/08	to	31/08/08	29.97
1/07/08	to	30/09/08	29.50
1/08/08	to	31/10/08	27.44
1/09/08	to	30/11/08	25.97

Red			Unit Price
1/09/06	to	30/11/06	26.46
1/10/06	to	31/12/06	23.77
1/11/06	to	31/01/07	28.42
1/12/06	to	28/02/07	28.99
1/01/07	to	31/03/07	29.27
1/02/07	to	30/04/07	29.70
1/03/07	to	31/05/07	29.09
1/04/07	to	30/06/07	28.66
1/05/07	to	31/07/07	28.01
1/06/07	to	31/08/07	32.64
1/07/07	to	30/09/07	35.42
1/08/07	to	31/10/07	32.94
1/09/07	to	30/11/07	34.57
1/10/07	to	31/12/07	34.31
1/11/07	to	31/01/08	31.85
1/12/07	to	29/02/08	32.12
1/01/08	to	31/03/08	31.67
1/02/08	to	30/04/08	28.89
1/03/08	to	31/05/08	27.62
1/04/08	to	30/06/08	27.90
1/05/08	to	31/07/08	29.92
1/06/08	to	31/08/08	31.11
1/07/08	to	30/09/08	30.37
1/08/08	to	31/10/08	29.59
1/09/08	to	30/11/08	27.54

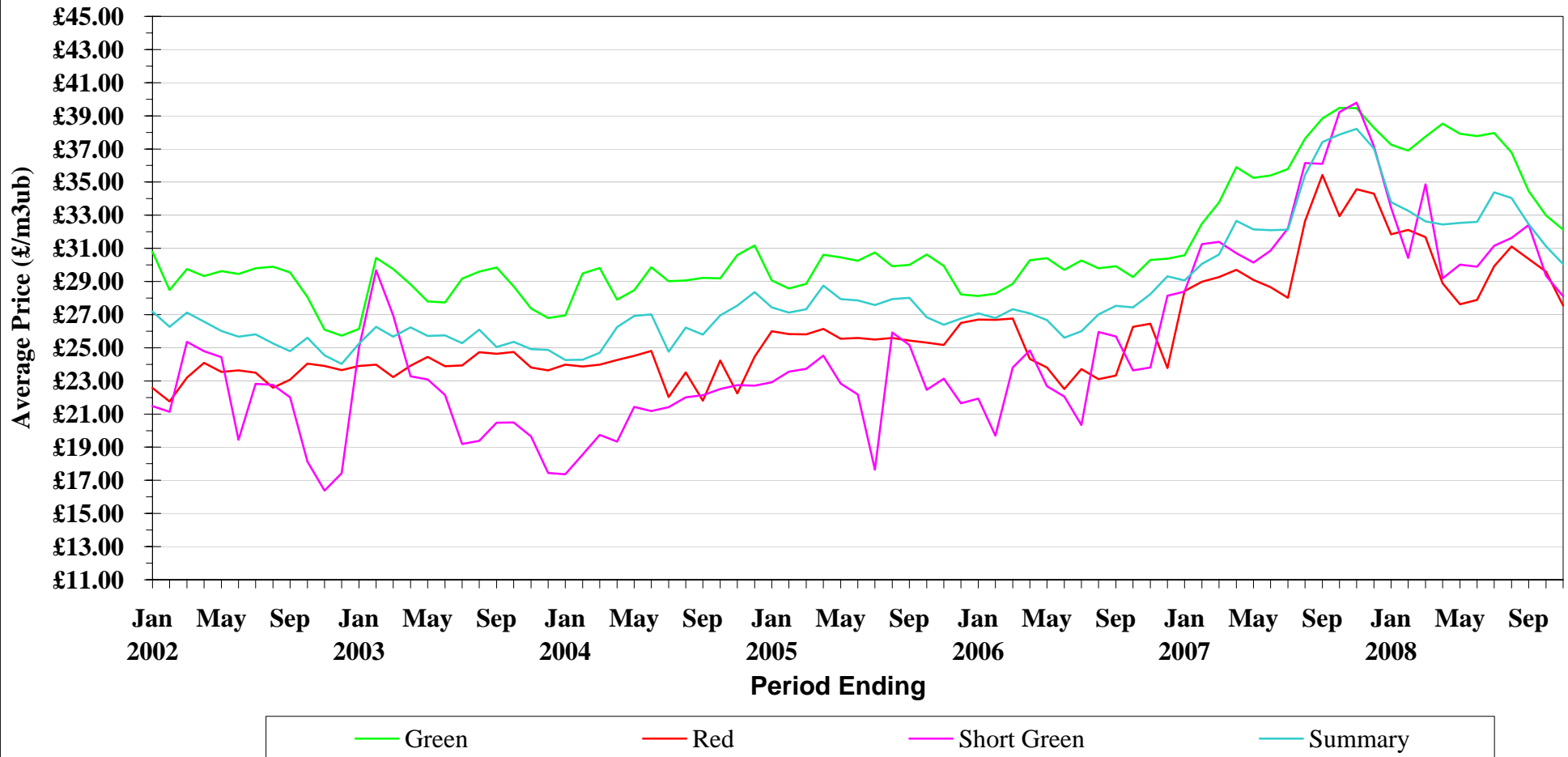
Short Green B			Unit Price
1/09/06	to	30/11/06	23.56
1/10/06	to	31/12/06	30.15
1/11/06	to	31/01/07	30.36
1/12/06	to	28/02/07	31.28
1/01/07	to	31/03/07	36.78
1/02/07	to	30/04/07	37.64
1/03/07	to	31/05/07	38.94
1/04/07	to	30/06/07	46.46
1/05/07	to	31/07/07	46.78
1/06/07	to	31/08/07	47.41
1/07/07	to	30/09/07	44.20
1/08/07	to	31/10/07	43.90
1/09/07	to	30/11/07	43.79
1/10/07	to	31/12/07	38.77
1/11/07	to	31/01/08	39.67
1/12/07	to	29/02/08	36.14
1/01/08	to	31/03/08	42.50
1/02/08	to	30/04/08	37.86
1/03/08	to	31/05/08	38.46
1/04/08	to	30/06/08	37.29
1/05/08	to	31/07/08	36.17
1/06/08	to	31/08/08	35.51
1/07/08	to	30/09/08	36.70
1/08/08	to	31/10/08	30.79
1/09/08	to	30/11/08	30.15

Summary for All			Unit Price
1/09/06	to	30/11/06	28.23
1/10/06	to	31/12/06	29.32
1/11/06	to	31/01/07	29.07
1/12/06	to	28/02/07	30.06
1/01/07	to	31/03/07	30.63
1/02/07	to	30/04/07	32.66
1/03/07	to	31/05/07	32.14
1/04/07	to	30/06/07	32.09
1/05/07	to	31/07/07	32.13
1/06/07	to	31/08/07	35.42
1/07/07	to	30/09/07	37.41
1/08/07	to	31/10/07	37.86
1/09/07	to	30/11/07	38.21
1/10/07	to	31/12/07	37.02
1/11/07	to	31/01/08	33.79
1/12/07	to	29/02/08	33.27
1/01/08	to	31/03/08	32.63
1/02/08	to	30/04/08	32.44
1/03/08	to	31/05/08	32.53
1/04/08	to	30/06/08	32.60
1/05/08	to	31/07/08	34.38
1/06/08	to	31/08/08	34.04
1/07/08	to	30/09/08	32.46
1/08/08	to	31/10/08	31.13
1/09/08	to	30/11/08	30.04

GB

Direct Production - Average Unit Prices

January 2002 to November 2008



NB - When category is not shown - No figures available for period

Direct Production - ENGLAND Average Unit Prices

Green

		Unit Price	
1/09/06	to 30/11/06	31.72	
1/10/06	to 31/12/06	29.09	
1/11/06	to 31/01/07	29.05	
1/12/06	to 28/02/07	33.13	
1/01/07	to 31/03/07	34.46	
1/02/07	to 30/04/07	43.17	
1/03/07	to 31/05/07	43.22	
1/04/07	to 30/06/07	42.90	
1/05/07	to 31/07/07	37.71	
1/06/07	to 31/08/07	41.40	
1/07/07	to 30/09/07	46.29	
1/08/07	to 31/10/07	44.14	
1/09/07	to 30/11/07	41.34	
1/10/07	to 31/12/07	41.34	
1/11/07	to 31/01/08	38.15	
1/12/07	to 29/02/08	36.95	
1/01/08	to 31/03/08	42.03	
1/02/08	to 30/04/08	41.29	
1/03/08	to 31/05/08	41.00	
1/04/08	to 30/06/08	40.84	
1/05/08	to 31/07/08	40.49	
1/06/08	to 31/08/08	35.21	
1/07/08	to 30/09/08	33.16	
1/08/08	to 31/10/08	34.12	
1/09/08	to 30/11/08	34.00	

Short Green

		Unit Price	
1/09/06	to 30/11/06	26.41	
1/10/06	to 31/12/06	26.75	
1/11/06	to 31/01/07	26.63	
1/12/06	to 28/02/07	25.91	
1/01/07	to 31/03/07	31.82	
1/02/07	to 30/04/07	32.41	
1/03/07	to 31/05/07	33.45	
1/04/07	to 30/06/07	30.99	
1/05/07	to 31/07/07	33.59	
1/06/07	to 31/08/07	34.65	
1/07/07	to 30/09/07	36.55	
1/08/07	to 31/10/07	34.63	
1/09/07	to 30/11/07	34.36	
1/10/07	to 31/12/07	37.07	
1/11/07	to 31/01/08	33.34	
1/12/07	to 29/02/08	30.43	
1/01/08	to 31/03/08	34.87	
1/02/08	to 30/04/08	31.93	
1/03/08	to 31/05/08	31.74	
1/04/08	to 30/06/08	31.44	
1/05/08	to 31/07/08	30.49	
1/06/08	to 31/08/08	32.80	
1/07/08	to 30/09/08	34.72	
1/08/08	to 31/10/08	29.83	
1/09/08	to 30/11/08	27.46	

Red

		Unit Price	
1/09/06	to 30/11/06	24.11	
1/10/06	to 31/12/06	23.72	
1/11/06	to 31/01/07	24.79	
1/12/06	to 28/02/07	24.11	
1/01/07	to 31/03/07	32.54	
1/02/07	to 30/04/07	31.16	
1/03/07	to 31/05/07	31.05	
1/04/07	to 30/06/07	30.37	
1/05/07	to 31/07/07	25.14	
1/06/07	to 31/08/07	27.66	
1/07/07	to 30/09/07	33.55	
1/08/07	to 31/10/07	30.75	
1/09/07	to 30/11/07	31.89	
1/10/07	to 31/12/07	32.42	
1/11/07	to 31/01/08	31.61	
1/12/07	to 29/02/08	25.07	
1/01/08	to 31/03/08	32.60	
1/02/08	to 30/04/08	31.78	
1/03/08	to 31/05/08	31.68	
1/04/08	to 30/06/08	30.90	
1/05/08	to 31/07/08	24.70	
1/06/08	to 31/08/08	25.39	
1/07/08	to 30/09/08	29.93	
1/08/08	to 31/10/08	29.24	
1/09/08	to 30/11/08	29.28	

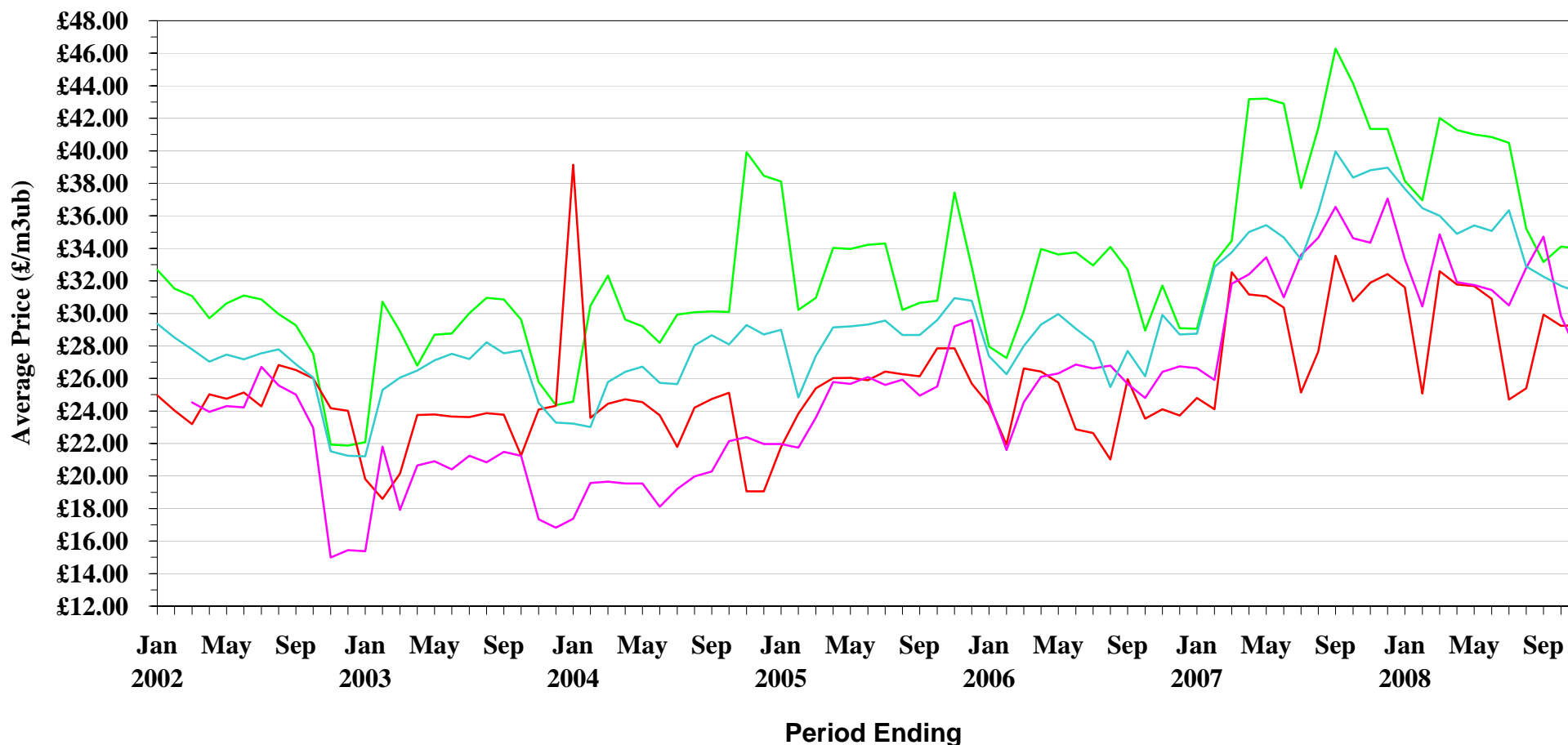
Summary for All

		Unit Price	
1/09/06	to 30/11/06	29.91	
1/10/06	to 31/12/06	28.70	
1/11/06	to 31/01/07	28.75	
1/12/06	to 28/02/07	32.86	
1/01/07	to 31/03/07	33.76	
1/02/07	to 30/04/07	35.00	
1/03/07	to 31/05/07	35.42	
1/04/07	to 30/06/07	34.67	
1/05/07	to 31/07/07	33.32	
1/06/07	to 31/08/07	36.25	
1/07/07	to 30/09/07	39.96	
1/08/07	to 31/10/07	38.36	
1/09/07	to 30/11/07	38.80	
1/10/07	to 31/12/07	38.97	
1/11/07	to 31/01/08	37.65	
1/12/07	to 29/02/08	36.47	
1/01/08	to 31/03/08	36.00	
1/02/08	to 30/04/08	34.90	
1/03/08	to 31/05/08	35.42	
1/04/08	to 30/06/08	35.08	
1/05/08	to 31/07/08	36.34	
1/06/08	to 31/08/08	32.88	
1/07/08	to 30/09/08	32.25	
1/08/08	to 31/10/08	31.70	
1/09/08	to 30/11/08	31.29	

ENGLAND

Direct Production - Average Unit Prices

January 2002 to November 2008



Green Red Short Green Summary

NB - When category is not shown - No figures available for period

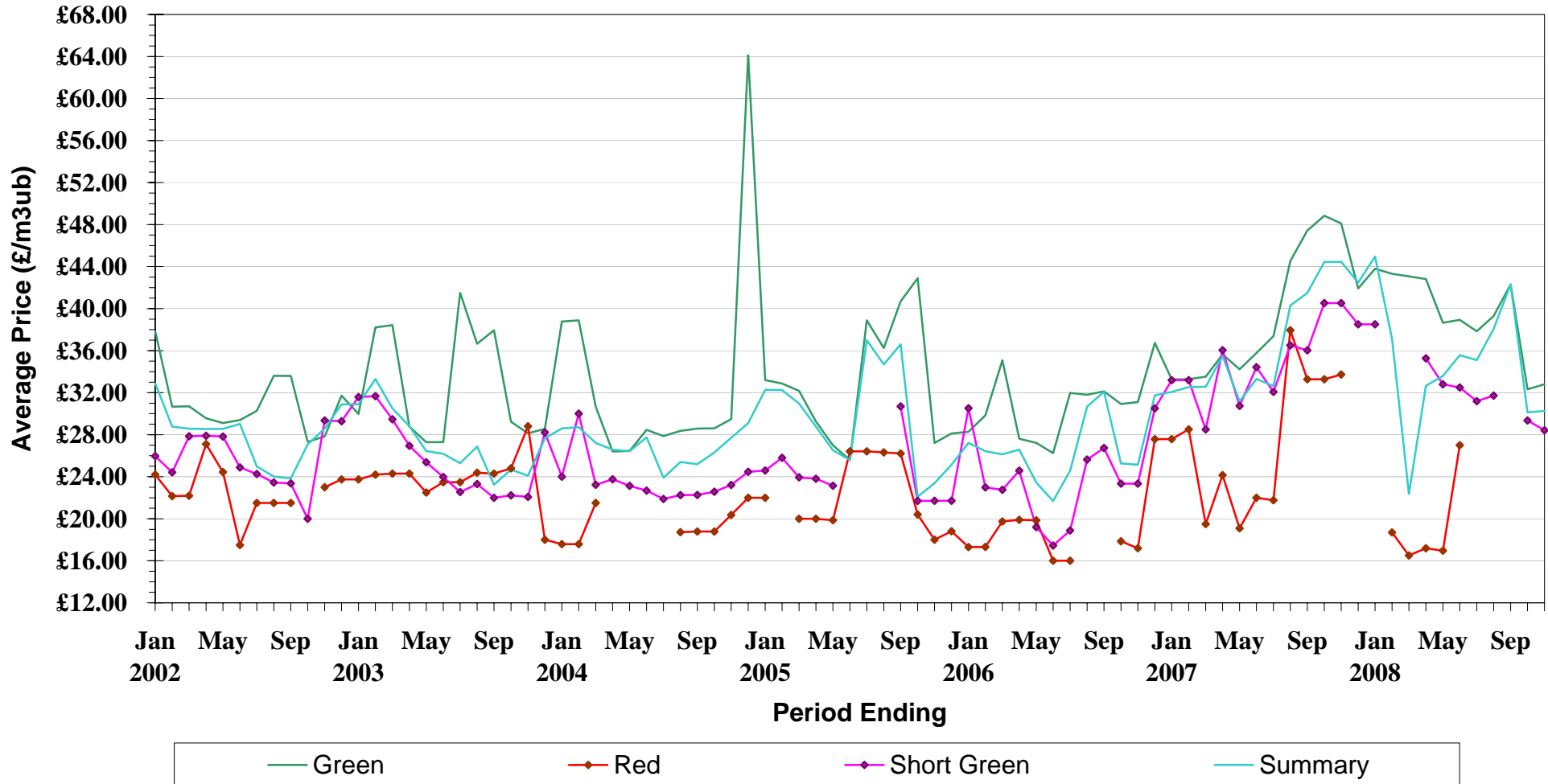
Direct Production - WALES Average Unit Prices

			Unit Price				Unit Price
Green	1/09/06	to 30/11/06	31.11	Short Green	1/09/06	to 30/11/06	23.35
	1/10/06	to 31/12/06	36.74		1/10/06	to 31/12/06	30.50
	1/11/06	to 31/01/07	33.26		1/11/06	to 31/01/07	
	1/12/06	to 28/02/07	33.29		1/12/06	to 28/02/07	
	1/01/07	to 31/03/07	33.52		1/01/07	to 31/03/07	
	1/02/07	to 30/04/07	35.64		1/02/07	to 30/04/07	36.05
	1/03/07	to 31/05/07	34.23		1/03/07	to 31/05/07	30.74
	1/04/07	to 30/06/07	35.77		1/04/07	to 30/06/07	34.43
	1/05/07	to 31/07/07	37.38		1/05/07	to 31/07/07	32.07
	1/06/07	to 31/08/07	44.54		1/06/07	to 31/08/07	36.51
	1/07/07	to 30/09/07	47.43		1/07/07	to 30/09/07	36.03
	1/08/07	to 31/10/07	48.84		1/08/07	to 31/10/07	40.53
	1/09/07	to 30/11/07	48.11		1/09/07	to 30/11/07	40.52
	1/10/07	to 31/12/07	41.92		1/10/07	to 31/12/07	
	1/11/07	to 31/01/08	43.80		1/11/07	to 31/01/08	
	1/12/07	to 29/02/08	43.32		1/12/07	to 29/02/08	
	1/01/08	to 31/03/08	43.08		1/01/08	to 31/03/08	
	1/02/08	to 30/04/08	42.81		1/02/08	to 30/04/08	35.28
	1/03/08	to 31/05/08	38.66		1/03/08	to 31/05/08	32.80
	1/04/08	to 30/06/08	38.93		1/04/08	to 30/06/08	32.50
1/05/08	to 31/07/08	37.84	1/05/08	to 31/07/08	31.19		
1/06/08	to 31/08/08	39.30	1/06/08	to 31/08/08	31.72		
1/07/08	to 30/09/08	42.30	1/07/08	to 30/09/08			
1/08/08	to 31/10/08	32.32	1/08/08	to 31/10/08	29.36		
1/09/08	to 30/11/08	32.80	1/09/08	to 30/11/08	28.43		
			Unit Price				Unit Price
Red	1/09/06	to 30/11/06	17.20	Summary for All	1/09/06	to 30/11/06	25.14
	1/10/06	to 31/12/06	27.58		1/10/06	to 31/12/06	31.75
	1/11/06	to 31/01/07	27.58		1/11/06	to 31/01/07	32.08
	1/12/06	to 28/02/07	28.51		1/12/06	to 28/02/07	32.53
	1/01/07	to 31/03/07			1/01/07	to 31/03/07	32.56
	1/02/07	to 30/04/07	24.15		1/02/07	to 30/04/07	35.49
	1/03/07	to 31/05/07			1/03/07	to 31/05/07	31.17
	1/04/07	to 30/06/07	22.00		1/04/07	to 30/06/07	33.31
	1/05/07	to 31/07/07	21.76		1/05/07	to 31/07/07	32.62
	1/06/07	to 31/08/07	37.94		1/06/07	to 31/08/07	40.29
	1/07/07	to 30/09/07	33.27		1/07/07	to 30/09/07	41.49
	1/08/07	to 31/10/07	33.27		1/08/07	to 31/10/07	44.43
	1/09/07	to 30/11/07	33.73		1/09/07	to 30/11/07	44.46
	1/10/07	to 31/12/07			1/10/07	to 31/12/07	41.86
	1/11/07	to 31/01/08			1/11/07	to 31/01/08	44.96
	1/12/07	to 29/02/08			1/12/07	to 29/02/08	37.13
	1/01/08	to 31/03/08	16.50		1/01/08	to 31/03/08	22.37
	1/02/08	to 30/04/08	17.20		1/02/08	to 30/04/08	32.65
	1/03/08	to 31/05/08	16.96		1/03/08	to 31/05/08	33.59
	1/04/08	to 30/06/08	27.00		1/04/08	to 30/06/08	35.57
1/05/08	to 31/07/08		1/05/08	to 31/07/08	35.10		
1/06/08	to 31/08/08		1/06/08	to 31/08/08	38.08		
1/07/08	to 30/09/08		1/07/08	to 30/09/08	42.30		
1/08/08	to 31/10/08		1/08/08	to 31/10/08	30.13		
1/09/08	to 30/11/08		1/09/08	to 30/11/08	30.26		

WALES

Direct Production - Average Unit Prices

January 2002 to November 2008



NB - When category is not shown - No figures available for period

Direct Production - SCOTLAND Average Unit Prices

Green			Unit Price
1/09/06	to	30/11/06	29.77
1/10/06	to	31/12/06	30.64
1/11/06	to	31/01/07	30.96
1/12/06	to	28/02/07	31.35
1/01/07	to	31/03/07	32.16
1/02/07	to	30/04/07	32.92
1/03/07	to	31/05/07	32.51
1/04/07	to	30/06/07	32.47
1/05/07	to	31/07/07	33.12
1/06/07	to	31/08/07	33.63
1/07/07	to	30/09/07	34.55
1/08/07	to	31/10/07	34.28
1/09/07	to	30/11/07	35.46
1/10/07	to	31/12/07	36.06
1/11/07	to	31/01/08	35.68
1/12/07	to	29/02/08	35.66
1/01/08	to	31/03/08	35.99
1/02/08	to	30/04/08	36.78
1/03/08	to	31/05/08	35.88
1/04/08	to	30/06/08	35.76
1/05/08	to	31/07/08	34.98
1/06/08	to	31/08/08	33.96
1/07/08	to	30/09/08	33.19
1/08/08	to	31/10/08	32.43
1/09/08	to	30/11/08	30.70

Short Green			Unit Price
1/09/06	to	30/11/06	
1/10/06	to	31/12/06	
1/11/06	to	31/01/07	
1/12/06	to	28/02/07	
1/01/07	to	31/03/07	
1/02/07	to	30/04/07	
1/03/07	to	31/05/07	
1/04/07	to	30/06/07	
1/05/07	to	31/07/07	
1/06/07	to	31/08/07	
1/07/07	to	30/09/07	
1/08/07	to	31/10/07	
1/09/07	to	30/11/07	
1/10/07	to	31/12/07	
1/11/07	to	31/01/08	
1/12/07	to	29/02/08	
1/01/08	to	31/03/08	
1/02/08	to	30/04/08	
1/03/08	to	31/05/08	
1/04/08	to	30/06/08	
1/05/08	to	31/07/08	
1/06/08	to	31/08/08	
1/07/08	to	30/09/08	
1/08/08	to	31/10/08	
1/09/08	to	30/11/08	

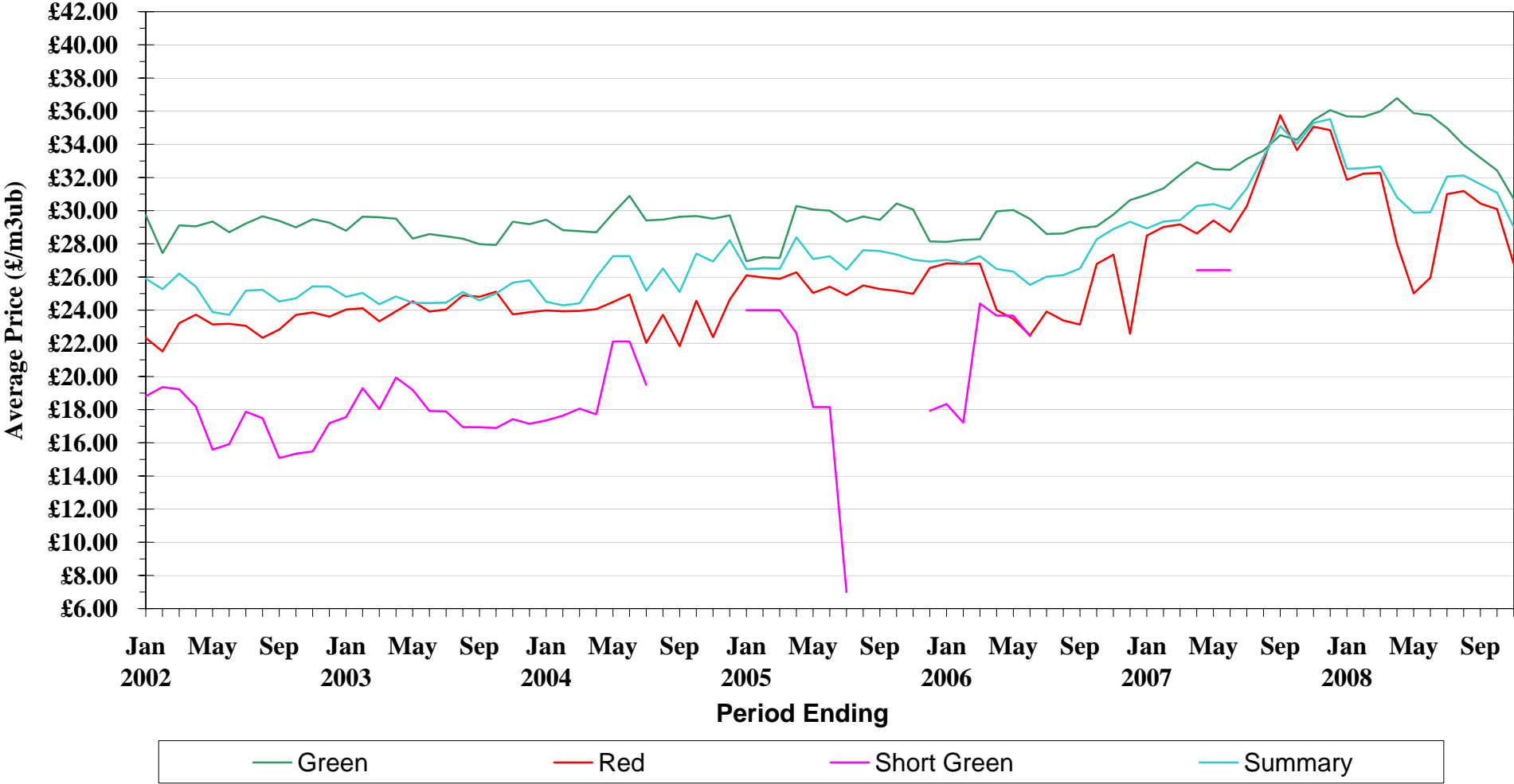
Red			Unit Price
1/09/06	to	30/11/06	27.35
1/10/06	to	31/12/06	22.58
1/11/06	to	31/01/07	28.50
1/12/06	to	28/02/07	29.02
1/01/07	to	31/03/07	29.17
1/02/07	to	30/04/07	28.63
1/03/07	to	31/05/07	29.41
1/04/07	to	30/06/07	28.71
1/05/07	to	31/07/07	30.27
1/06/07	to	31/08/07	32.99
1/07/07	to	30/09/07	35.76
1/08/07	to	31/10/07	33.65
1/09/07	to	30/11/07	35.06
1/10/07	to	31/12/07	34.85
1/11/07	to	31/01/08	31.86
1/12/07	to	29/02/08	32.23
1/01/08	to	31/03/08	32.27
1/02/08	to	30/04/08	28.00
1/03/08	to	31/05/08	25.00
1/04/08	to	30/06/08	25.96
1/05/08	to	31/07/08	31.00
1/06/08	to	31/08/08	31.18
1/07/08	to	30/09/08	30.43
1/08/08	to	31/10/08	30.10
1/09/08	to	30/11/08	26.79

Summary for All			Unit Price
1/09/06	to	30/11/06	28.89
1/10/06	to	31/12/06	29.33
1/11/06	to	31/01/07	28.93
1/12/06	to	28/02/07	29.35
1/01/07	to	31/03/07	29.43
1/02/07	to	30/04/07	30.28
1/03/07	to	31/05/07	30.40
1/04/07	to	30/06/07	30.09
1/05/07	to	31/07/07	31.35
1/06/07	to	31/08/07	33.26
1/07/07	to	30/09/07	35.11
1/08/07	to	31/10/07	34.04
1/09/07	to	30/11/07	35.29
1/10/07	to	31/12/07	35.52
1/11/07	to	31/01/08	32.52
1/12/07	to	29/02/08	32.57
1/01/08	to	31/03/08	32.67
1/02/08	to	30/04/08	30.80
1/03/08	to	31/05/08	29.88
1/04/08	to	30/06/08	29.91
1/05/08	to	31/07/08	32.06
1/06/08	to	31/08/08	32.12
1/07/08	to	30/09/08	31.60
1/08/08	to	31/10/08	31.08
1/09/08	to	30/11/08	29.00

SCOTLAND

Direct Production - Average Unit Prices

January 2002 to November 2008



NB - When category is not shown - No figures available for period

STANDING SALES - GB AVERAGE UNIT PRICES

			Unit Price (£/m3obs)				Unit Price (£/tonne)
Thinning (Instalment)	1/09/06	to 30/11/06	15.35	Clearfell (Weight)	1/09/06	to 30/11/06	10.58
	1/10/06	to 31/12/06	15.56		1/10/06	to 31/12/06	9.38
	1/11/06	to 31/01/07	14.97		1/11/06	to 31/01/07	11.02
	1/12/06	to 28/02/07	18.10		1/12/06	to 28/02/07	10.34
	1/01/07	to 31/03/07	16.13		1/01/07	to 31/03/07	11.20
	1/02/07	to 30/04/07	16.23		1/02/07	to 30/04/07	13.47
	1/03/07	to 31/05/07	16.39		1/03/07	to 31/05/07	15.88
	1/04/07	to 30/06/07	15.20		1/04/07	to 30/06/07	14.71
	1/05/07	to 31/07/07	15.57		1/05/07	to 31/07/07	14.69
	1/06/07	to 31/08/07	19.09		1/06/07	to 31/08/07	13.42
	1/07/07	to 30/09/07	19.61		1/07/07	to 30/09/07	14.77
	1/08/07	to 31/10/07	18.39		1/08/07	to 31/10/07	16.07
	1/09/07	to 30/11/07	7.82		1/09/07	to 30/11/07	16.54
	1/10/07	to 31/12/07	18.48		1/10/07	to 31/12/07	14.72
	1/11/07	to 31/01/08	15.20		1/11/07	to 31/01/08	15.03
	1/12/07	to 29/02/08	14.00		1/12/07	to 29/02/08	14.26
	1/01/08	to 31/03/08	18.66		1/01/08	to 31/03/08	14.66
	1/02/08	to 30/04/08	18.51		1/02/08	to 30/04/08	15.48
	1/03/08	to 31/05/08	17.82		1/03/08	to 31/05/08	15.68
	1/04/08	to 30/06/08	17.12		1/04/08	to 30/06/08	14.53
1/05/08	to 31/07/08	12.78	1/05/08	to 31/07/08	10.79		
1/06/08	to 31/08/08	11.44	1/06/08	to 31/08/08	9.48		
1/07/08	to 30/09/08	11.35	1/07/08	to 30/09/08	9.94		
1/08/08	to 31/10/08	12.27	1/08/08	to 31/10/08	9.28		
1/09/08	to 30/11/08	9.95	1/09/08	to 30/11/08	9.16		

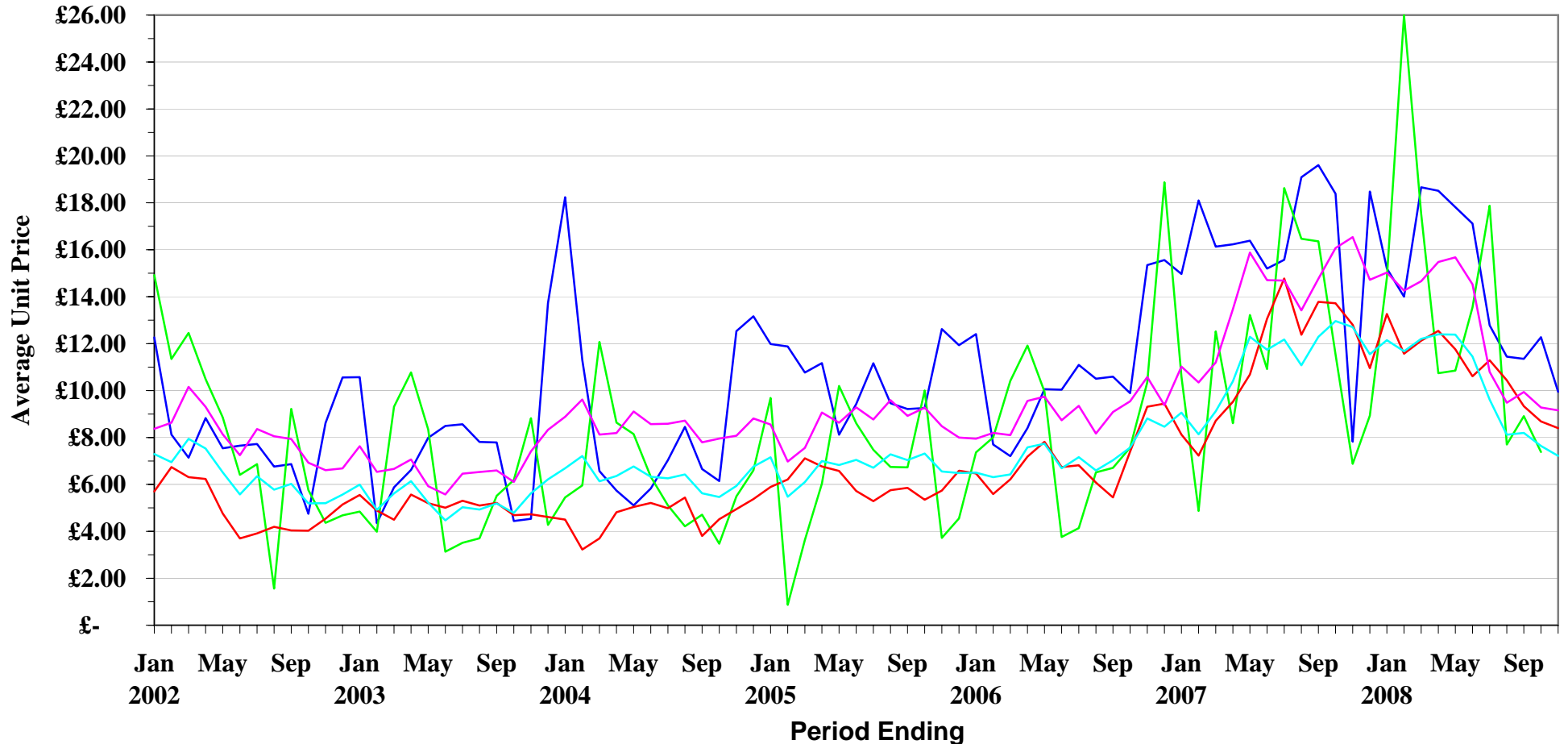
			Unit Price (£/m3obs)				Unit Price (£/m3obs)
Clearfell (Instalment)	1/09/06	to 30/11/06	10.35	Summary	1/09/06	to 30/11/06	8.81
	1/10/06	to 31/12/06	18.88		1/10/06	to 31/12/06	8.46
	1/11/06	to 31/01/07	10.59		1/11/06	to 31/01/07	9.06
	1/12/06	to 28/02/07	4.87		1/12/06	to 28/02/07	8.14
	1/01/07	to 31/03/07	12.52		1/01/07	to 31/03/07	9.12
	1/02/07	to 30/04/07	8.61		1/02/07	to 30/04/07	10.40
	1/03/07	to 31/05/07	13.22		1/03/07	to 31/05/07	12.29
	1/04/07	to 30/06/07	10.92		1/04/07	to 30/06/07	11.74
	1/05/07	to 31/07/07	18.63		1/05/07	to 31/07/07	12.17
	1/06/07	to 31/08/07	16.47		1/06/07	to 31/08/07	11.08
	1/07/07	to 30/09/07	16.36		1/07/07	to 30/09/07	12.29
	1/08/07	to 31/10/07	11.54		1/08/07	to 31/10/07	12.96
	1/09/07	to 30/11/07	8.94		1/09/07	to 30/11/07	12.75
	1/10/07	to 31/12/07	8.93		1/10/07	to 31/12/07	11.55
	1/11/07	to 31/01/08	14.80		1/11/07	to 31/01/08	12.15
	1/12/07	to 29/02/08	26.00		1/12/07	to 29/02/08	11.68
	1/01/08	to 31/03/08	17.53		1/01/08	to 31/03/08	12.18
	1/02/08	to 30/04/08	10.74		1/02/08	to 30/04/08	12.40
	1/03/08	to 31/05/08	10.85		1/03/08	to 31/05/08	12.39
	1/04/08	to 30/06/08	13.54		1/04/08	to 30/06/08	11.45
1/05/08	to 31/07/08	17.88	1/05/08	to 31/07/08	9.62		
1/06/08	to 31/08/08	7.70	1/06/08	to 31/08/08	8.12		
1/07/08	to 30/09/08	8.91	1/07/08	to 30/09/08	8.19		
1/08/08	to 31/10/08	7.38	1/08/08	to 31/10/08	7.64		
1/09/08	to 30/11/08		1/09/08	to 30/11/08	7.22		

			Unit Price (£/tonne)
Thinning (Weight)	1/11/06	to 31/01/07	9.31
	1/10/06	to 31/12/06	9.44
	1/11/06	to 31/01/07	8.12
	1/12/06	to 28/02/07	7.23
	1/01/07	to 31/03/07	8.71
	1/02/07	to 30/04/07	9.52
	1/03/07	to 31/05/07	10.69
	1/04/07	to 30/06/07	13.06
	1/05/07	to 31/07/07	14.78
	1/06/07	to 31/08/07	12.38
	1/07/07	to 30/09/07	13.78
	1/08/07	to 31/10/07	13.72
	1/09/07	to 30/11/07	12.80
	1/10/07	to 31/12/07	10.95
	1/11/07	to 31/01/08	13.27
	1/12/07	to 29/02/08	11.57
	1/01/08	to 31/03/08	11.92
	1/02/08	to 30/04/08	12.55
	1/03/08	to 31/05/08	11.76
	1/04/08	to 30/06/08	10.61
1/05/08	to 31/07/08	11.29	
1/06/08	to 31/08/08	10.44	
1/07/08	to 30/09/08	9.34	
1/08/08	to 31/10/08	8.69	
1/09/08	to 30/11/08	8.40	

Standing Sales - Average Unit Price

GB

January 2002 to November 2008



— Thinning (Instalment) — Clearfell (Instalment) — Thinning (Weight) — Clearfell (Weight) — Summary

NB - When category is not shown - No figures available for period

STANDING SALES - ENGLAND AVERAGE UNIT PRICES

			Unit Price (£/m3obs)				Unit Price (£/tonne)
Thinning (Instalment)	1/09/06	to 30/11/06	15.35	Clearfell (Weight)	1/09/06	to 30/11/06	10.59
	1/10/06	to 31/12/06	15.56		1/10/06	to 31/12/06	11.52
	1/11/06	to 31/01/07	14.97		1/11/06	to 31/01/07	14.26
	1/12/06	to 28/02/07	18.10		1/12/06	to 28/02/07	14.21
	1/01/07	to 31/03/07	16.13		1/01/07	to 31/03/07	17.40
	1/02/07	to 30/04/07	16.23		1/02/07	to 30/04/07	18.81
	1/03/07	to 31/05/07	16.39		1/03/07	to 31/05/07	20.93
	1/04/07	to 30/06/07	15.20		1/04/07	to 30/06/07	19.14
	1/05/07	to 31/07/07	15.57		1/05/07	to 31/07/07	22.86
	1/06/07	to 31/08/07	19.09		1/06/07	to 31/08/07	21.01
	1/07/07	to 30/09/07	19.61		1/07/07	to 30/09/07	22.02
	1/08/07	to 31/10/07	18.39		1/08/07	to 31/10/07	18.69
	1/09/07	to 30/11/07	7.82		1/09/07	to 30/11/07	17.93
	1/10/07	to 31/12/07	18.48		1/10/07	to 31/12/07	19.37
	1/11/07	to 31/01/08	15.20		1/11/07	to 31/01/08	22.18
	1/12/07	to 29/02/08	14.00		1/12/07	to 29/02/08	15.80
	1/01/08	to 31/03/08	18.66		1/01/08	to 31/03/08	19.74
	1/02/08	to 30/04/08	18.51		1/02/08	to 30/04/08	18.86
	1/03/08	to 31/05/08	17.82		1/03/08	to 31/05/08	19.85
	1/04/08	to 30/06/08	17.12		1/04/08	to 30/06/08	20.00
1/05/08	to 31/07/08	14.47	1/05/08	to 31/07/08	18.91		
1/06/08	to 31/08/08	12.34	1/06/08	to 31/08/08	15.88		
1/07/08	to 30/09/08	12.21	1/07/08	to 30/09/08	15.95		
1/08/08	to 31/10/08	12.27	1/08/08	to 31/10/08	12.51		
1/09/08	to 30/11/08	12.95	1/09/08	to 30/11/08	9.76		

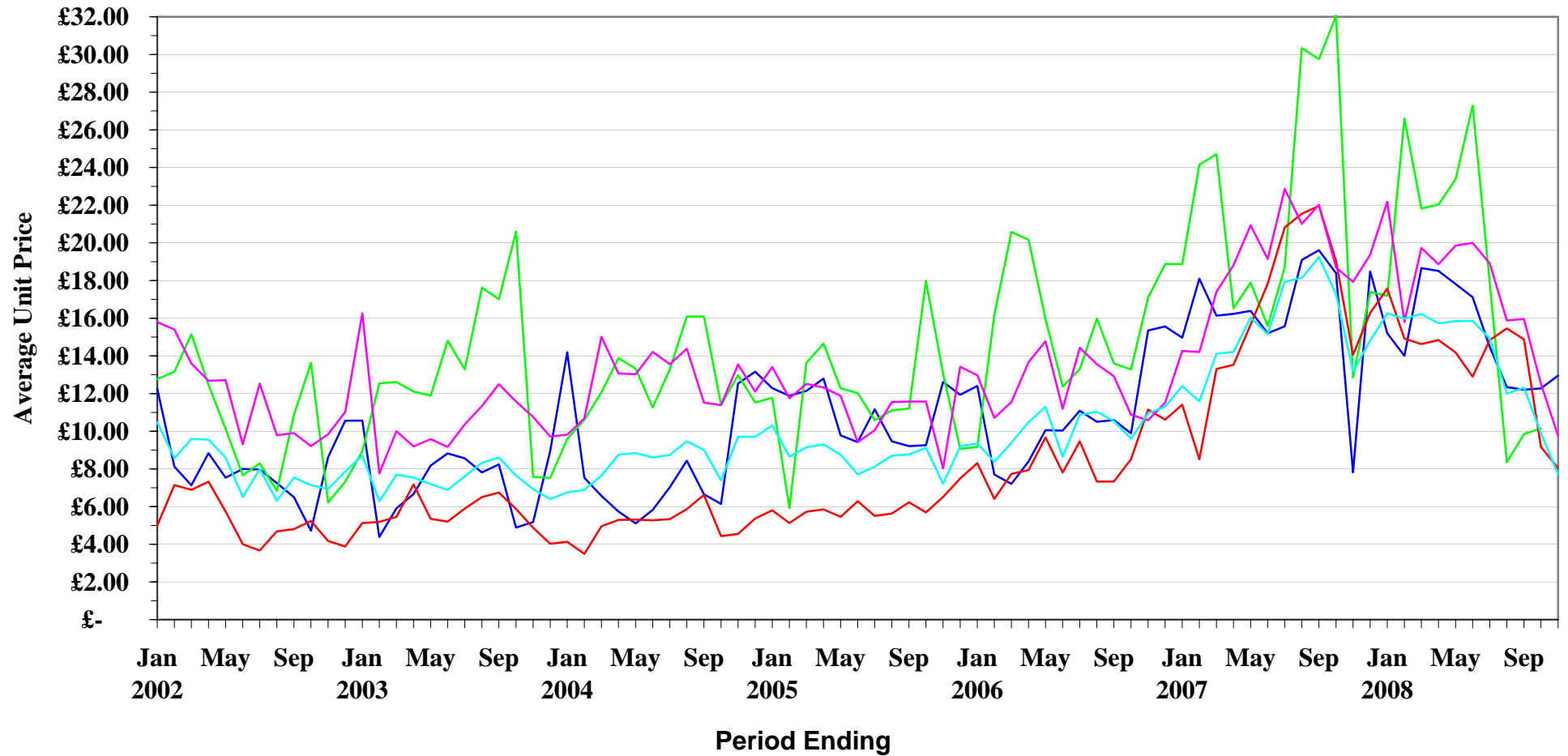
			Unit Price (£/m3obs)				Unit Price (£/m3obs)
Clearfell (Instalment)	1/09/06	to 30/11/06	17.10	Summary	1/09/06	to 30/11/06	10.95
	1/10/06	to 31/12/06	18.88		1/10/06	to 31/12/06	11.30
	1/11/06	to 31/01/07	18.88		1/11/06	to 31/01/07	12.40
	1/12/06	to 28/02/07	24.14		1/12/06	to 28/02/07	11.59
	1/01/07	to 31/03/07	24.71		1/01/07	to 31/03/07	14.12
	1/02/07	to 30/04/07	16.53		1/02/07	to 30/04/07	13.83
	1/03/07	to 31/05/07	17.89		1/03/07	to 31/05/07	16.03
	1/04/07	to 30/06/07	15.58		1/04/07	to 30/06/07	15.15
	1/05/07	to 31/07/07	18.70		1/05/07	to 31/07/07	17.94
	1/06/07	to 31/08/07	30.34		1/06/07	to 31/08/07	16.55
	1/07/07	to 30/09/07	29.75		1/07/07	to 30/09/07	19.24
	1/08/07	to 31/10/07	32.06		1/08/07	to 31/10/07	17.26
	1/09/07	to 30/11/07	12.85		1/09/07	to 30/11/07	13.17
	1/10/07	to 31/12/07	17.40		1/10/07	to 31/12/07	14.81
	1/11/07	to 31/01/08	17.19		1/11/07	to 31/01/08	16.25
	1/12/07	to 29/02/08	26.59		1/12/07	to 29/02/08	15.97
	1/01/08	to 31/03/08	21.82		1/01/08	to 31/03/08	16.22
	1/02/08	to 30/04/08	22.03		1/02/08	to 30/04/08	15.73
	1/03/08	to 31/05/08	23.38		1/03/08	to 31/05/08	15.85
	1/04/08	to 30/06/08	27.28		1/04/08	to 30/06/08	15.86
1/05/08	to 31/07/08	17.88	1/05/08	to 31/07/08	14.91		
1/06/08	to 31/08/08	8.36	1/06/08	to 31/08/08	12.00		
1/07/08	to 30/09/08	9.85	1/07/08	to 30/09/08	12.31		
1/08/08	to 31/10/08	10.15	1/08/08	to 31/10/08	9.90		
1/09/08	to 30/11/08		1/09/08	to 30/11/08	7.71		

			Unit Price (£/tonne)
Thinning (Weight)	1/08/06	to 31/10/06	8.51
	1/09/06	to 30/11/06	11.15
	1/10/06	to 31/12/06	10.61
	1/11/06	to 31/01/07	11.41
	1/12/06	to 28/02/07	8.52
	1/01/07	to 31/03/07	13.31
	1/02/07	to 30/04/07	13.52
	1/03/07	to 31/05/07	15.66
	1/04/07	to 30/06/07	17.84
	1/05/07	to 31/07/07	20.82
	1/06/07	to 31/08/07	21.54
	1/07/07	to 30/09/07	21.96
	1/08/07	to 31/10/07	19.04
	1/09/07	to 30/11/07	14.06
	1/10/07	to 31/12/07	16.28
	1/11/07	to 31/01/08	17.57
	1/12/07	to 29/02/08	14.91
	1/01/08	to 31/03/08	14.63
	1/02/08	to 30/04/08	14.84
	1/03/08	to 31/05/08	14.18
1/04/08	to 30/06/08	12.90	
1/05/08	to 31/07/08	14.83	
1/06/08	to 31/08/08	15.46	
1/07/08	to 30/09/08	14.88	
1/08/08	to 31/10/08	9.17	
1/09/08	to 30/11/08	8.04	

ENGLAND

Standing Sales - Average Unit Price

January 2002 to November 2008



— Thinning (Instalment) — Clearfell (Instalment) — Thinning (Weight) — Clearfell (Weight) — Summary

NB - When category is not shown - No figures available for period

STANDING SALES - WALES AVERAGE UNIT PRICES

			Unit Price (£/m3obs)				Unit Price (£/tonne)
Thinning (Instalment)	1/09/06	to 30/11/06		Clearfell (Weight)	1/09/06	to 30/11/06	5.23
	1/10/06	to 31/12/06			1/10/06	to 31/12/06	13.35
	1/11/06	to 31/01/07			1/11/06	to 31/01/07	13.24
	1/12/06	to 28/02/07			1/12/06	to 28/02/07	11.74
	1/01/07	to 31/03/07			1/01/07	to 31/03/07	5.81
	1/02/07	to 30/04/07			1/02/07	to 30/04/07	15.58
	1/03/07	to 31/05/07			1/03/07	to 31/05/07	16.35
	1/04/07	to 30/06/07			1/04/07	to 30/06/07	20.62
	1/05/07	to 31/07/07			1/05/07	to 31/07/07	21.25
	1/06/07	to 31/08/07			1/06/07	to 31/08/07	22.43
	1/07/07	to 30/09/07			1/07/07	to 30/09/07	22.00
	1/08/07	to 31/10/07			1/08/07	to 31/10/07	24.89
	1/09/07	to 30/11/07			1/09/07	to 30/11/07	25.99
	1/10/07	to 31/12/07			1/10/07	to 31/12/07	22.83
	1/11/07	to 31/01/08			1/11/07	to 31/01/08	22.65
	1/12/07	to 29/02/08			1/12/07	to 29/02/08	21.81
	1/01/08	to 31/03/08			1/01/08	to 31/03/08	12.34
	1/02/08	to 30/04/08			1/02/08	to 30/04/08	25.62
	1/03/08	to 31/05/08			1/03/08	to 31/05/08	25.05
	1/04/08	to 30/06/08			1/04/08	to 30/06/08	20.21
1/05/08	to 31/07/08		1/05/08	to 31/07/08	9.16		
1/06/08	to 31/08/08		1/06/08	to 31/08/08	8.03		
1/07/08	to 30/09/08		1/07/08	to 30/09/08	8.23		
1/08/08	to 31/10/08		1/08/08	to 31/10/08	16.72		
1/09/08	to 30/11/08		1/09/08	to 30/11/08	16.55		

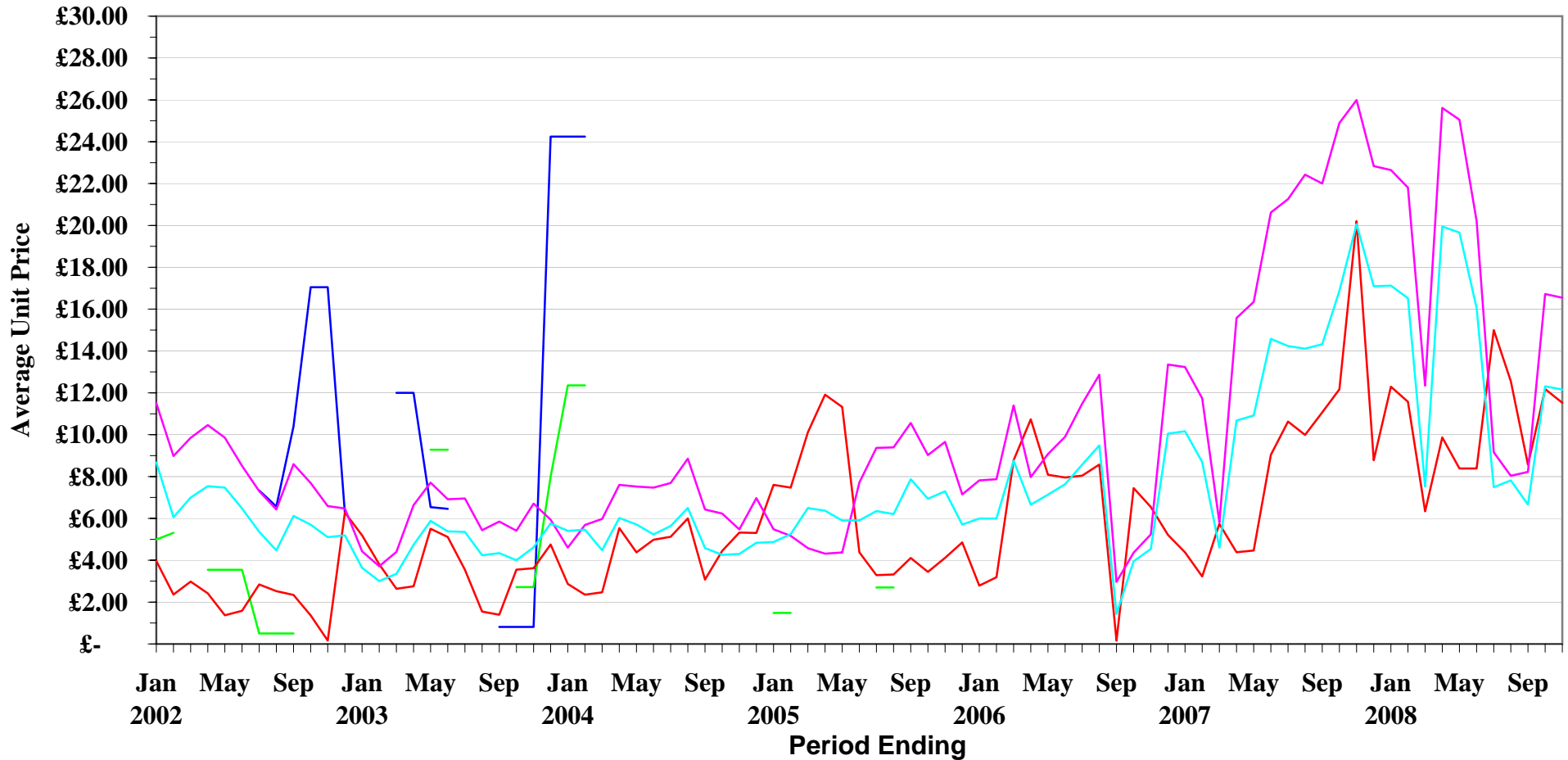
			Unit Price (£/m3obs)				Unit Price (£/m3obs)
Clearfell (Instalment)	1/09/06	to 30/11/06		Summary	1/09/06	to 30/11/06	4.54
	1/10/06	to 31/12/06			1/10/06	to 31/12/06	10.05
	1/11/06	to 31/01/07			1/11/06	to 31/01/07	10.17
	1/12/06	to 28/02/07			1/12/06	to 28/02/07	8.69
	1/01/07	to 31/03/07			1/01/07	to 31/03/07	4.60
	1/02/07	to 30/04/07			1/02/07	to 30/04/07	10.68
	1/03/07	to 31/05/07			1/03/07	to 31/05/07	10.91
	1/04/07	to 30/06/07			1/04/07	to 30/06/07	14.58
	1/05/07	to 31/07/07			1/05/07	to 31/07/07	14.24
	1/06/07	to 31/08/07			1/06/07	to 31/08/07	14.11
	1/07/07	to 30/09/07			1/07/07	to 30/09/07	14.33
	1/08/07	to 31/10/07			1/08/07	to 31/10/07	16.88
	1/09/07	to 30/11/07			1/09/07	to 30/11/07	20.06
	1/10/07	to 31/12/07			1/10/07	to 31/12/07	17.09
	1/11/07	to 31/01/08			1/11/07	to 31/01/08	17.12
	1/12/07	to 29/02/08			1/12/07	to 29/02/08	16.52
	1/01/08	to 31/03/08			1/01/08	to 31/03/08	7.52
	1/02/08	to 30/04/08			1/02/08	to 30/04/08	19.95
	1/03/08	to 31/05/08			1/03/08	to 31/05/08	19.66
	1/04/08	to 30/06/08			1/04/08	to 30/06/08	16.05
1/05/08	to 31/07/08		1/05/08	to 31/07/08	7.49		
1/06/08	to 31/08/08		1/06/08	to 31/08/08	7.81		
1/07/08	to 30/09/08		1/07/08	to 30/09/08	6.66		
1/08/08	to 31/10/08		1/08/08	to 31/10/08	12.31		
1/09/08	to 30/11/08		1/09/08	to 30/11/08	12.16		

		Unit Price (£/tonne)	
Thinning (Weight)	1/08/06	to 31/10/06	7.44
	1/09/06	to 30/11/06	6.54
	1/10/06	to 31/12/06	5.21
	1/11/06	to 31/01/07	4.38
	1/12/06	to 28/02/07	3.23
	1/01/07	to 31/03/07	5.74
	1/02/07	to 30/04/07	4.38
	1/03/07	to 31/05/07	4.46
	1/04/07	to 30/06/07	9.04
	1/05/07	to 31/07/07	10.63
	1/06/07	to 31/08/07	9.99
	1/07/07	to 30/09/07	11.06
	1/08/07	to 31/10/07	12.17
	1/09/07	to 30/11/07	20.21
	1/10/07	to 31/12/07	8.78
	1/11/07	to 31/01/08	12.30
	1/12/07	to 29/02/08	11.57
	1/01/08	to 31/03/08	6.34
	1/02/08	to 30/04/08	
	1/03/08	to 31/05/08	8.38
1/04/08	to 30/06/08	8.38	
1/05/08	to 31/07/08		
1/06/08	to 31/08/08	12.56	
1/07/08	to 30/09/08	8.56	
1/08/08	to 31/10/08	12.18	
1/09/08	to 30/11/08	11.52	

WALES

Standing Sales - Average Unit Price

January 2002 to November 2008



— Thinning (Instalment) — Clearfell (Instalment) — Thinning (Weight) — Clearfell (Weight) — Summary

NB - When category is not shown - No figures available for period

STANDING SALES - SCOTLAND AVERAGE UNIT PRICES

			Unit Price (£/m3obs)				Unit Price (£/tonne)
Thinning (Instalment)	1/09/06	to 30/11/06		Clearfell (Weight)	1/09/06	to 30/11/06	11.04
	1/10/06	to 31/12/06			1/10/06	to 31/12/06	8.29
	1/11/06	to 31/01/07			1/11/06	to 31/01/07	9.50
	1/12/06	to 28/02/07			1/12/06	to 28/02/07	9.28
	1/01/07	to 31/03/07			1/01/07	to 31/03/07	9.03
	1/02/07	to 30/04/07			1/02/07	to 30/04/07	11.79
	1/03/07	to 31/05/07			1/03/07	to 31/05/07	12.95
	1/04/07	to 30/06/07			1/04/07	to 30/06/07	10.92
	1/05/07	to 31/07/07			1/05/07	to 31/07/07	9.04
	1/06/07	to 31/08/07			1/06/07	to 31/08/07	10.04
	1/07/07	to 30/09/07			1/07/07	to 30/09/07	12.35
	1/08/07	to 31/10/07			1/08/07	to 31/10/07	13.83
	1/09/07	to 30/11/07			1/09/07	to 30/11/07	14.86
	1/10/07	to 31/12/07			1/10/07	to 31/12/07	12.53
	1/11/07	to 31/01/08			1/11/07	to 31/01/08	12.39
	1/12/07	to 29/02/08			1/12/07	to 29/02/08	12.07
	1/01/08	to 31/03/08			1/01/08	to 31/03/08	11.85
	1/02/08	to 30/04/08			1/02/08	to 30/04/08	12.63
	1/03/08	to 31/05/08			1/03/08	to 31/05/08	10.90
	1/04/08	to 30/06/08			1/04/08	to 30/06/08	10.87
1/05/08	to 31/07/08		1/05/08	to 31/07/08	8.30		
1/06/08	to 31/08/08		1/06/08	to 31/08/08	7.93		
1/07/08	to 30/09/08		1/07/08	to 30/09/08	8.92		
1/08/08	to 31/10/08		1/08/08	to 31/10/08	7.76		
1/09/08	to 30/11/08		1/09/08	to 30/11/08	8.38		

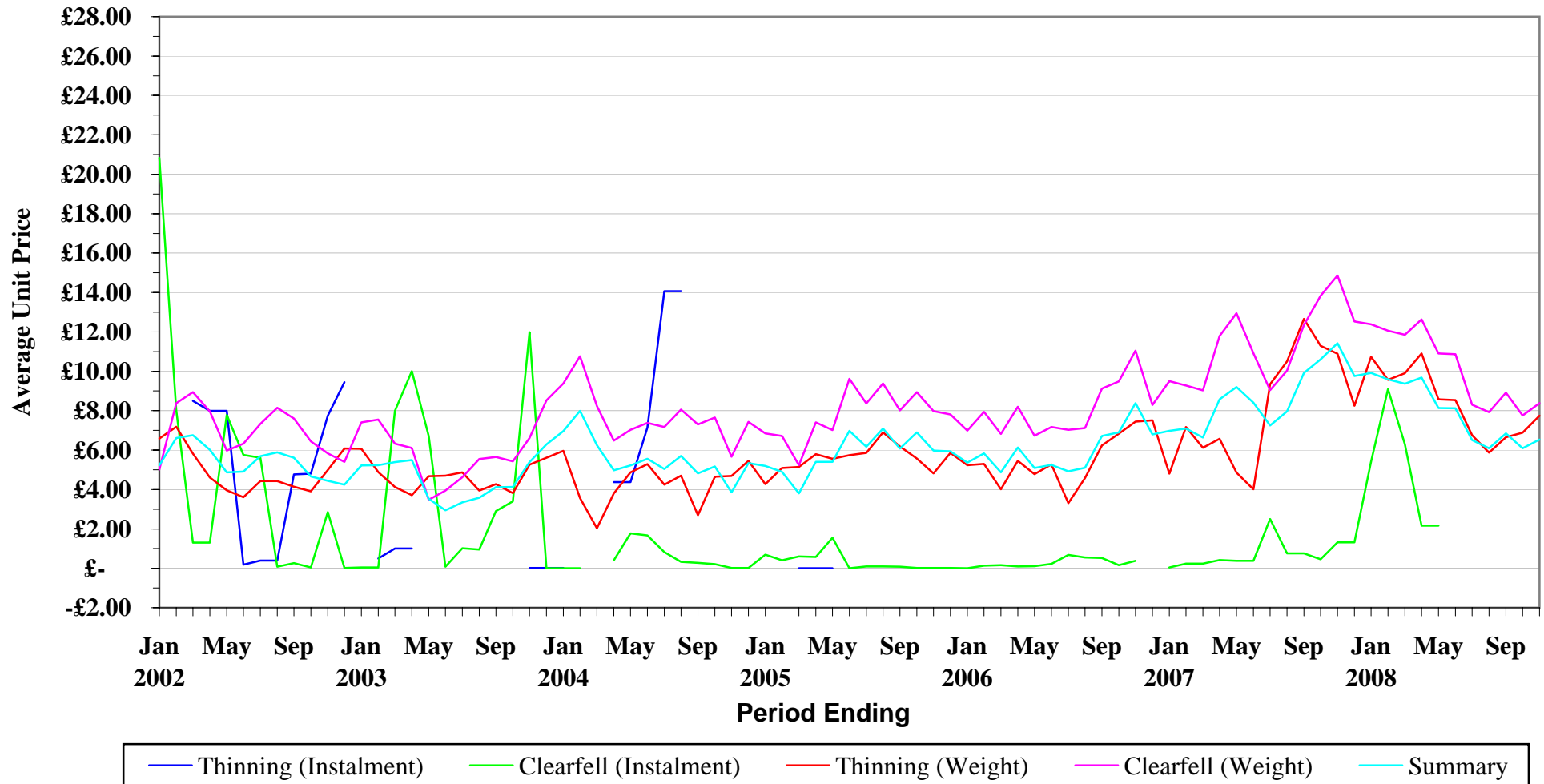
			Unit Price (£/m3obs)				Unit Price (£/m3obs)
Clearfell (Instalment)	1/09/06	to 30/11/06	0.38	Summary	1/09/06	to 30/11/06	8.38
	1/10/06	to 31/12/06			1/10/06	to 31/12/06	6.79
	1/11/06	to 31/01/07	0.04		1/11/06	to 31/01/07	6.98
	1/12/06	to 28/02/07	0.24		1/12/06	to 28/02/07	7.10
	1/01/07	to 31/03/07	0.24		1/01/07	to 31/03/07	6.64
	1/02/07	to 30/04/07	0.42		1/02/07	to 30/04/07	8.57
	1/03/07	to 31/05/07	0.39		1/03/07	to 31/05/07	9.21
	1/04/07	to 30/06/07	0.39		1/04/07	to 30/06/07	8.41
	1/05/07	to 31/07/07			1/05/07	to 31/07/07	7.26
	1/06/07	to 31/08/07			1/06/07	to 31/08/07	7.97
	1/07/07	to 30/09/07			1/07/07	to 30/09/07	9.91
	1/08/07	to 31/10/07			1/08/07	to 31/10/07	10.60
	1/09/07	to 30/11/07			1/09/07	to 30/11/07	11.43
	1/10/07	to 31/12/07	1.31		1/10/07	to 31/12/07	9.76
	1/11/07	to 31/01/08	5.42		1/11/07	to 31/01/08	9.92
	1/12/07	to 29/02/08			1/12/07	to 29/02/08	9.59
	1/01/08	to 31/03/08	6.29		1/01/08	to 31/03/08	9.36
	1/02/08	to 30/04/08	2.16		1/02/08	to 30/04/08	9.68
	1/03/08	to 31/05/08	2.16		1/03/08	to 31/05/08	8.13
	1/04/08	to 30/06/08			1/04/08	to 30/06/08	8.12
1/05/08	to 31/07/08		1/05/08	to 31/07/08	6.51		
1/06/08	to 31/08/08		1/06/08	to 31/08/08	6.09		
1/07/08	to 30/09/08		1/07/08	to 30/09/08	6.85		
1/08/08	to 31/10/08		1/08/08	to 31/10/08	6.09		
1/09/08	to 30/11/08		1/09/08	to 30/11/08	6.54		

			Unit Price (£/tonne)
Thinning (Weight)	1/08/06	to 31/10/06	6.83
	1/09/06	to 30/11/06	7.44
	1/10/06	to 31/12/06	7.52
	1/11/06	to 31/01/07	4.81
	1/12/06	to 28/02/07	7.17
	1/01/07	to 31/03/07	6.11
	1/02/07	to 30/04/07	6.57
	1/03/07	to 31/05/07	4.85
	1/04/07	to 30/06/07	4.01
	1/05/07	to 31/07/07	9.34
	1/06/07	to 31/08/07	10.50
	1/07/07	to 30/09/07	12.66
	1/08/07	to 31/10/07	11.30
	1/09/07	to 30/11/07	10.90
	1/10/07	to 31/12/07	8.25
	1/11/07	to 31/01/08	10.73
	1/12/07	to 29/02/08	9.57
	1/01/08	to 31/03/08	9.91
	1/02/08	to 30/04/08	10.90
	1/03/08	to 31/05/08	8.57
1/04/08	to 30/06/08	8.53	
1/05/08	to 31/07/08	6.75	
1/06/08	to 31/08/08	5.87	
1/07/08	to 30/09/08	6.65	
1/08/08	to 31/10/08	6.89	
1/09/08	to 30/11/08	7.75	

SCOTLAND

Standing Sales - Average Unit Price

January 2002 to November 2008



NB - When category is not shown - No figures available for period

STANDING SALES - GB AVERAGE TREE SIZE

			Average Tree Size				Average Tree Size
Thinning (Instalment)	1/09/06	to 30/11/06	0.29	Clearfell (Weight)	1/09/06	to 30/11/06	0.36
	1/10/06	to 31/12/06	0.34		1/10/06	to 31/12/06	0.37
	1/11/06	to 31/01/07	0.36		1/11/06	to 31/01/07	0.35
	1/12/06	to 28/02/07	0.51		1/12/06	to 28/02/07	0.31
	1/01/07	to 31/03/07	0.41		1/01/07	to 31/03/07	0.29
	1/02/07	to 30/04/07	0.41		1/02/07	to 30/04/07	0.30
	1/03/07	to 31/05/07	0.38		1/03/07	to 31/05/07	0.32
	1/04/07	to 30/06/07	0.21		1/04/07	to 30/06/07	0.34
	1/05/07	to 31/07/07	0.21		1/05/07	to 31/07/07	0.33
	1/06/07	to 31/08/07	0.48		1/06/07	to 31/08/07	0.32
	1/07/07	to 30/09/07	0.50		1/07/07	to 30/09/07	0.30
	1/08/07	to 31/10/07	0.44		1/08/07	to 31/10/07	0.31
	1/09/07	to 30/11/07	0.42		1/09/07	to 30/11/07	0.32
	1/10/07	to 31/12/07	0.61		1/10/07	to 31/12/07	0.33
	1/11/07	to 31/01/08	0.45		1/11/07	to 31/01/08	0.36
	1/12/07	to 29/02/08	0.46		1/12/07	to 29/02/08	0.34
	1/01/08	to 31/03/08	0.43		1/01/08	to 31/03/08	0.30
	1/02/08	to 30/04/08	0.46		1/02/08	to 30/04/08	0.32
	1/03/08	to 31/05/08	0.43		1/03/08	to 31/05/08	0.35
	1/04/08	to 30/06/08	0.33		1/04/08	to 30/06/08	0.35
1/05/08	to 31/07/08	0.40	1/05/08	to 31/07/08	0.31		
1/06/08	to 31/08/08	0.52	1/06/08	to 31/08/08	0.31		
1/07/08	to 30/09/08	0.52	1/07/08	to 30/09/08	0.38		
1/08/08	to 31/10/08	0.49	1/08/08	to 31/10/08	0.35		
1/09/08	to 30/11/08	0.35	1/09/08	to 30/11/08	0.35		

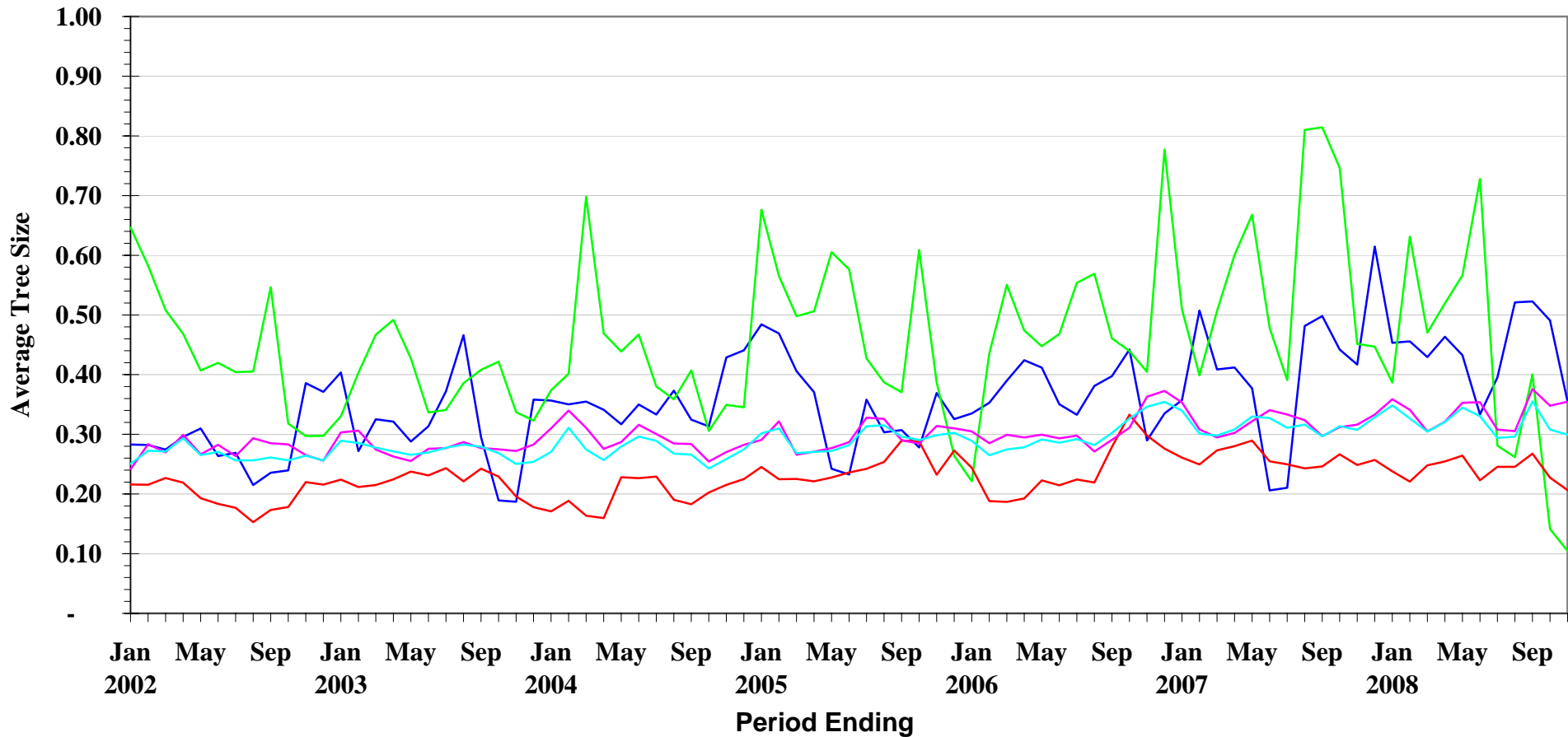
			Average Tree Size				Average Tree Size
Clearfell (Instalment)	1/09/06	to 30/11/06	0.40	Summary	1/09/06	to 30/11/06	0.35
	1/10/06	to 31/12/06	0.78		1/10/06	to 31/12/06	0.35
	1/11/06	to 31/01/07	0.51		1/11/06	to 31/01/07	0.34
	1/12/06	to 28/02/07	0.40		1/12/06	to 28/02/07	0.30
	1/01/07	to 31/03/07	0.51		1/01/07	to 31/03/07	0.30
	1/02/07	to 30/04/07	0.60		1/02/07	to 30/04/07	0.31
	1/03/07	to 31/05/07	0.67		1/03/07	to 31/05/07	0.33
	1/04/07	to 30/06/07	0.48		1/04/07	to 30/06/07	0.33
	1/05/07	to 31/07/07	0.39		1/05/07	to 31/07/07	0.31
	1/06/07	to 31/08/07	0.20		1/06/07	to 31/08/07	0.31
	1/07/07	to 30/09/07	0.81		1/07/07	to 30/09/07	0.30
	1/08/07	to 31/10/07	0.75		1/08/07	to 31/10/07	0.31
	1/09/07	to 30/11/07	0.45		1/09/07	to 30/11/07	0.31
	1/10/07	to 31/12/07	0.45		1/10/07	to 31/12/07	0.33
	1/11/07	to 31/01/08	0.39		1/11/07	to 31/01/08	0.35
	1/12/07	to 29/02/08	0.63		1/12/07	to 29/02/08	0.33
	1/01/08	to 31/03/08	0.47		1/01/08	to 31/03/08	0.30
	1/02/08	to 30/04/08	0.52		1/02/08	to 30/04/08	0.32
	1/03/08	to 31/05/08	0.57		1/03/08	to 31/05/08	0.34
	1/04/08	to 30/06/08	0.73		1/04/08	to 30/06/08	0.33
1/05/08	to 31/07/08	0.28	1/05/08	to 31/07/08	0.29		
1/06/08	to 31/08/08	0.26	1/06/08	to 31/08/08	0.30		
1/07/08	to 30/09/08	0.40	1/07/08	to 30/09/08	0.36		
1/08/08	to 31/10/08	0.14	1/08/08	to 31/10/08	0.31		
1/09/08	to 30/11/08	0.10	1/09/08	to 30/11/08	0.30		

			Average Tree Size
Thinning (Weight)	1/09/06	to 30/11/06	0.30
	1/10/06	to 31/12/06	0.28
	1/11/06	to 31/01/07	0.26
	1/12/06	to 28/02/07	0.25
	1/01/07	to 31/03/07	0.27
	1/02/07	to 30/04/07	0.28
	1/03/07	to 31/05/07	0.29
	1/04/07	to 30/06/07	0.25
	1/05/07	to 31/07/07	0.25
	1/06/07	to 31/08/07	0.24
	1/07/07	to 30/09/07	0.25
	1/08/07	to 31/10/07	0.27
	1/09/07	to 30/11/07	0.25
	1/10/07	to 31/12/07	0.26
	1/11/07	to 31/01/08	0.24
	1/12/07	to 29/02/08	0.22
	1/01/08	to 31/03/08	0.25
	1/02/08	to 30/04/08	0.25
	1/03/08	to 31/05/08	0.26
	1/04/08	to 30/06/08	0.22
1/05/08	to 31/07/08	0.25	
1/06/08	to 31/08/08	0.25	
1/07/08	to 30/09/08	0.27	
1/08/08	to 31/10/08	0.23	
1/09/08	to 30/11/08	0.21	

GB

Standing Sales - Average Tree Sizes

January 2002 to November 2008



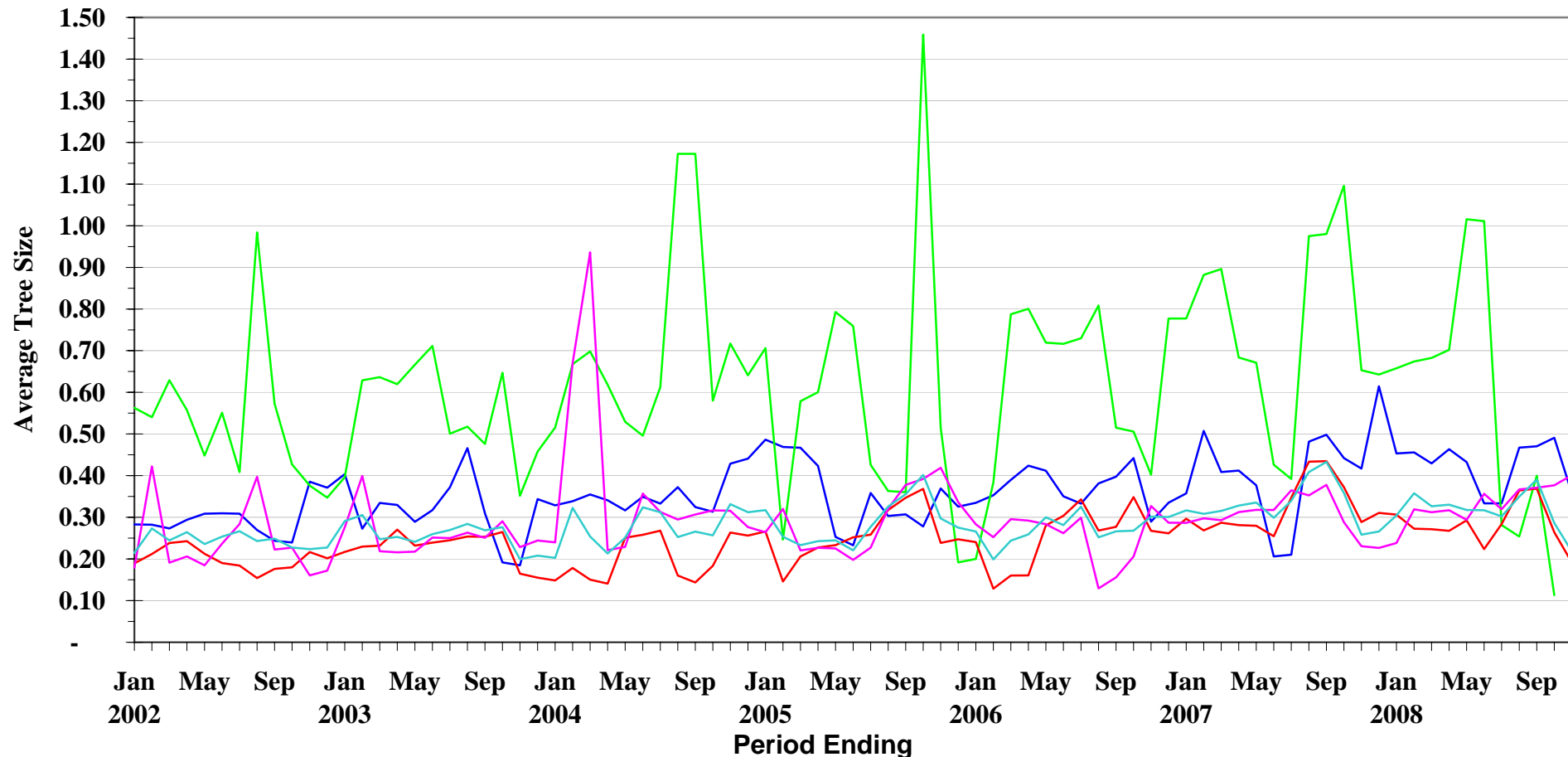
— Thinning (Instalment) — Clearfell (Instalment) — Thinning (Weight) — Clearfell (Weight) — Summary

NB - When category is not shown - No figures available for period

ENGLAND

Standing Sales - Average Tree Sizes

January 2002 to November 2008



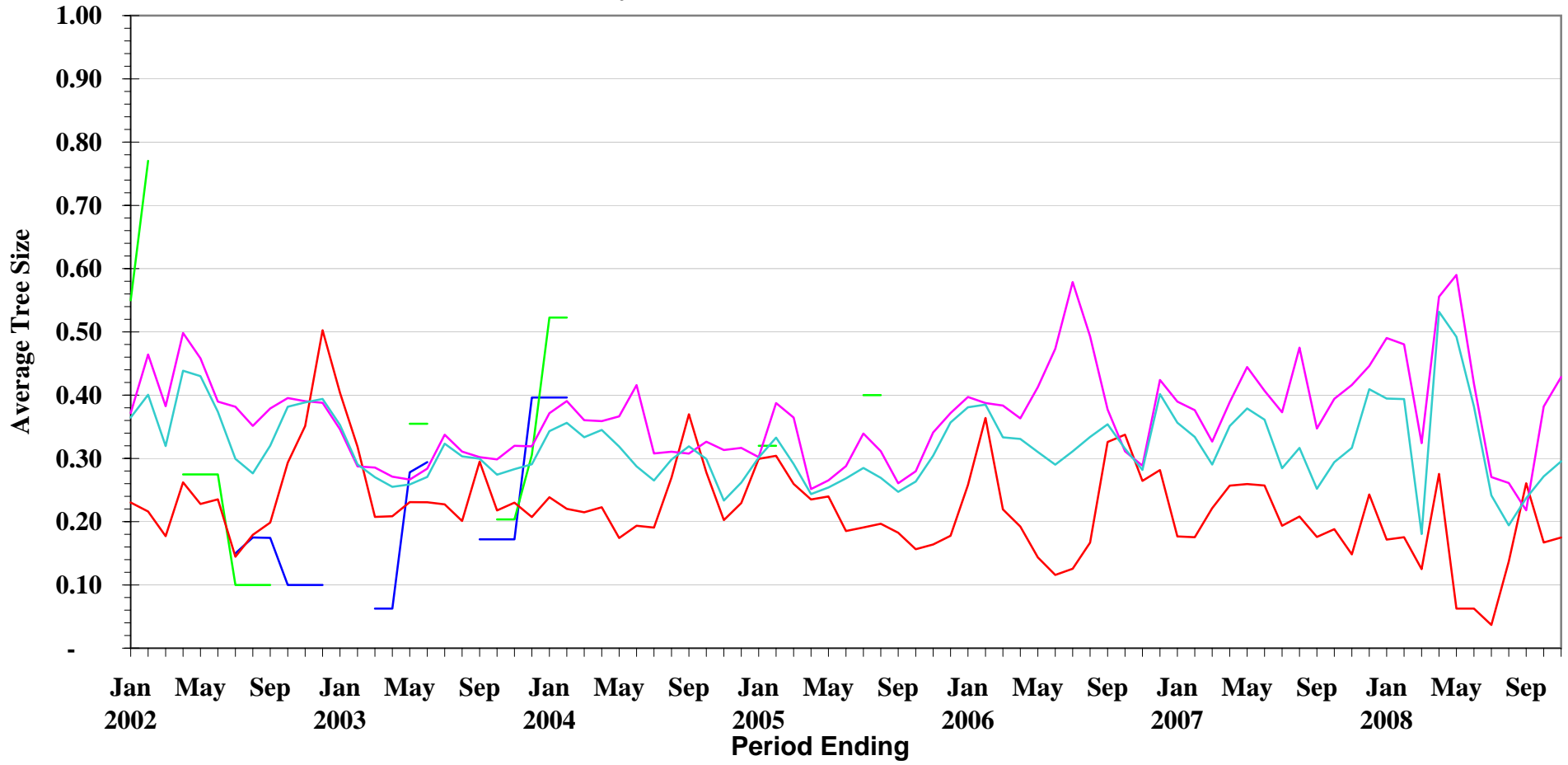
— Thinning (Instalment) — Clearfell (Instalment) — Thinning (Weight) — Clearfell (Weight) — Summary

NB - When category is not shown - No figures available for period

WALES

Standing Sales - Average Tree Sizes

January 2002 to November 2008



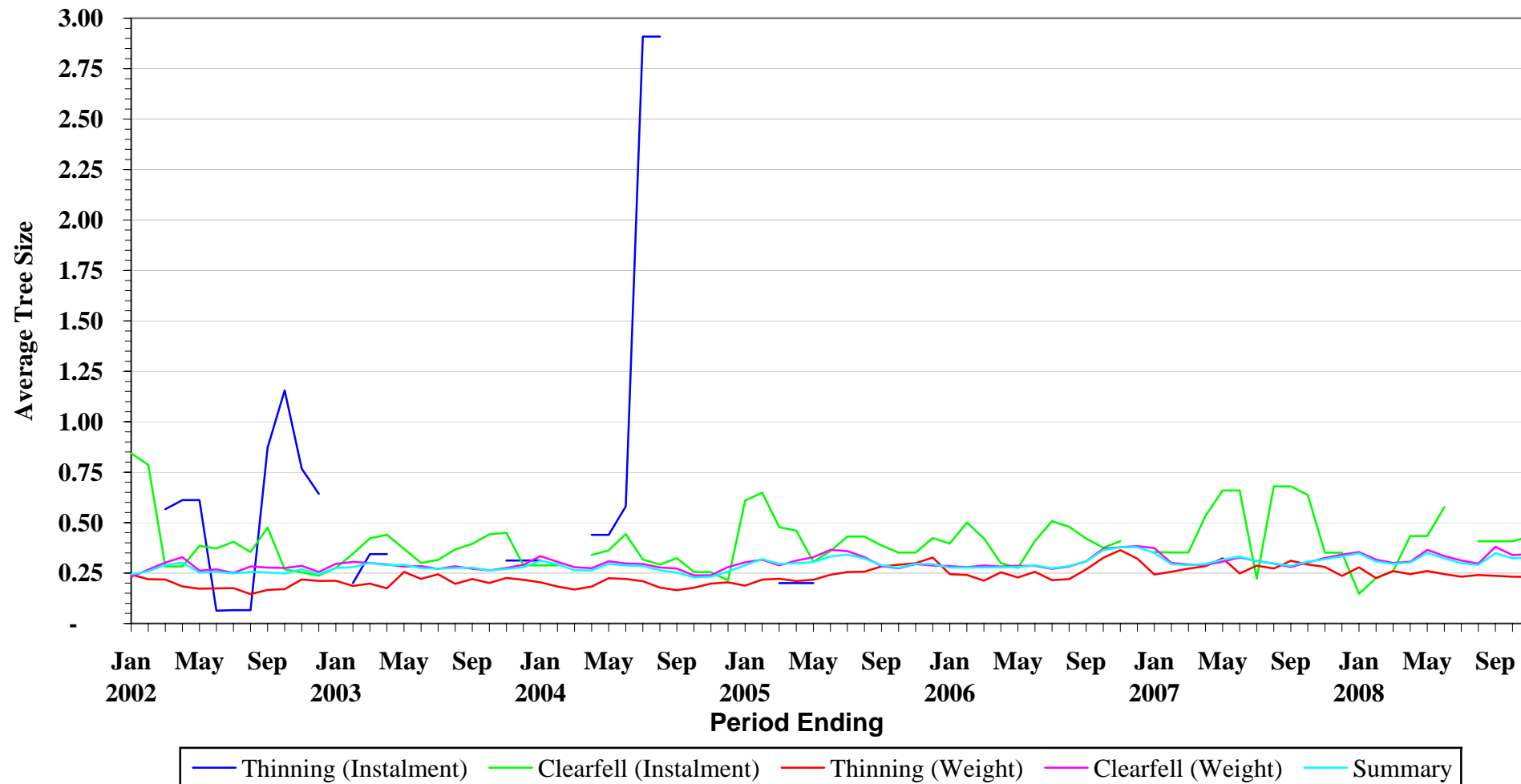
— Thinning (Instalment) — Clearfell (Instalment) — Thinning (Weight) — Clearfell (Weight) — Summary

NB - When category is not shown - No figures available for period

SCOTLAND

Standing Sales - Average Tree Sizes

January 2002 to November 2008



NB - When category is not shown - No figures available for period