

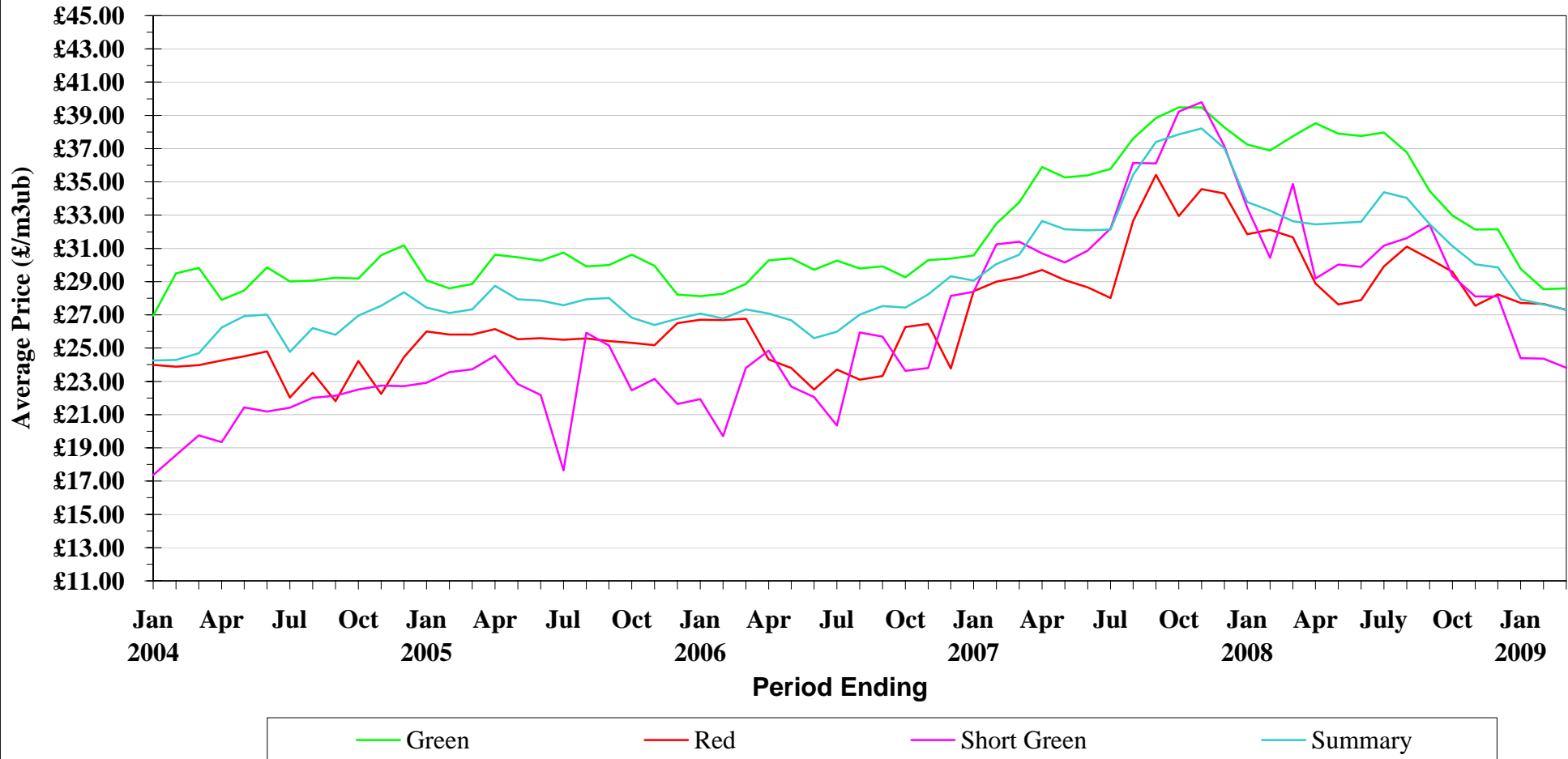
**Direct Production - GB Average Unit Prices**

			Unit Price				Unit Price
<b>Green</b>	1/01/07	to 31/03/07	33.77	<b>Short Green A</b>	1/01/07	to 31/03/07	30.52
	1/02/07	to 30/04/07	35.90		1/02/07	to 30/04/07	30.46
	1/03/07	to 31/05/07	35.26		1/03/07	to 31/05/07	29.85
	1/04/07	to 30/06/07	35.40		1/04/07	to 30/06/07	29.90
	1/05/07	to 31/07/07	35.78		1/05/07	to 31/07/07	29.79
	1/06/07	to 31/08/07	37.61		1/06/07	to 31/08/07	33.60
	1/07/07	to 30/09/07	38.84		1/07/07	to 30/09/07	35.33
	1/08/07	to 31/10/07	39.49		1/08/07	to 31/10/07	37.78
	1/09/07	to 30/11/07	39.47		1/09/07	to 30/11/07	38.61
	1/10/07	to 31/12/07	38.27		1/10/07	to 31/12/07	35.74
	1/11/07	to 31/01/08	37.25		1/11/07	to 31/01/08	31.37
	1/12/07	to 29/02/08	36.89		1/12/07	to 29/02/08	28.39
	1/01/08	to 31/03/08	37.75		1/01/08	to 31/03/08	33.01
	1/02/08	to 30/04/08	38.52		1/02/08	to 30/04/08	28.81
	1/03/08	to 31/05/08	37.91		1/03/08	to 31/05/08	29.31
	1/04/08	to 30/06/08	37.77		1/04/08	to 30/06/08	29.38
	1/05/08	to 31/07/08	37.96		1/05/08	to 31/07/08	30.86
	1/06/08	to 31/08/08	36.78		1/06/08	to 31/08/08	29.97
	1/07/08	to 30/09/08	34.46		1/07/08	to 30/09/08	29.50
1/08/08	to 31/10/08	32.98	1/08/08	to 31/10/08	27.44		
1/09/08	to 30/11/08	32.13	1/09/08	to 30/11/08	25.97		
1/10/08	to 31/12/08	32.15	1/10/08	to 31/12/08	25.73		
1/11/08	to 31/01/09	29.78	1/11/08	to 31/01/09	23.83		
1/12/08	to 28/02/09	28.55	1/12/08	to 28/02/09	23.59		
1/01/09	to 31/03/09	28.60	1/01/09	to 31/03/09	22.19		
			Unit Price				Unit Price
<b>Red</b>	1/01/07	to 31/03/07	29.27	<b>Short Green B</b>	1/01/07	to 31/03/07	36.78
	1/02/07	to 30/04/07	29.70		1/02/07	to 30/04/07	37.64
	1/03/07	to 31/05/07	29.09		1/03/07	to 31/05/07	38.94
	1/04/07	to 30/06/07	28.66		1/04/07	to 30/06/07	46.46
	1/05/07	to 31/07/07	28.01		1/05/07	to 31/07/07	46.78
	1/06/07	to 31/08/07	32.64		1/06/07	to 31/08/07	47.41
	1/07/07	to 30/09/07	35.42		1/07/07	to 30/09/07	44.20
	1/08/07	to 31/10/07	32.94		1/08/07	to 31/10/07	43.90
	1/09/07	to 30/11/07	34.57		1/09/07	to 30/11/07	43.79
	1/10/07	to 31/12/07	34.31		1/10/07	to 31/12/07	38.77
	1/11/07	to 31/01/08	31.85		1/11/07	to 31/01/08	39.67
	1/12/07	to 29/02/08	32.12		1/12/07	to 29/02/08	36.14
	1/01/08	to 31/03/08	31.67		1/01/08	to 31/03/08	42.50
	1/02/08	to 30/04/08	28.89		1/02/08	to 30/04/08	37.86
	1/03/08	to 31/05/08	27.62		1/03/08	to 31/05/08	38.46
	1/04/08	to 30/06/08	27.90		1/04/08	to 30/06/08	37.29
	1/05/08	to 31/07/08	29.92		1/05/08	to 31/07/08	36.17
	1/06/08	to 31/08/08	31.11		1/06/08	to 31/08/08	35.51
	1/07/08	to 30/09/08	30.37		1/07/08	to 30/09/08	36.70
1/08/08	to 31/10/08	29.59	1/08/08	to 31/10/08	30.79		
1/09/08	to 30/11/08	27.54	1/09/08	to 30/11/08	30.15		
1/10/08	to 31/12/08	28.23	1/10/08	to 31/12/08	30.13		
1/11/08	to 31/01/09	27.72	1/11/08	to 31/01/09	34.38		
1/12/08	to 28/02/09	27.66	1/12/08	to 28/02/09	27.25		
1/01/09	to 31/03/09	27.30	1/01/09	to 31/03/09	27.21		
			Unit Price				Unit Price
<b>Summary for All</b>	1/01/07	to 31/03/07	30.63				
	1/02/07	to 30/04/07	32.66				
	1/03/07	to 31/05/07	32.14				
	1/04/07	to 30/06/07	32.09				
	1/05/07	to 31/07/07	32.13				
	1/06/07	to 31/08/07	35.42				
	1/07/07	to 30/09/07	37.41				
	1/08/07	to 31/10/07	37.86				
	1/09/07	to 30/11/07	38.21				
	1/10/07	to 31/12/07	37.02				
	1/11/07	to 31/01/08	33.79				
	1/12/07	to 29/02/08	33.27				
	1/01/08	to 31/03/08	32.63				
	1/02/08	to 30/04/08	32.44				
	1/03/08	to 31/05/08	32.53				
	1/04/08	to 30/06/08	32.60				
	1/05/08	to 31/07/08	34.38				
	1/06/08	to 31/08/08	34.04				
	1/07/08	to 30/09/08	32.46				
1/08/08	to 31/10/08	31.13					
1/09/08	to 30/11/08	30.04					
1/10/08	to 31/12/08	29.85					
1/11/08	to 31/01/09	27.94					
1/12/08	to 28/02/09	27.63					
1/01/09	to 31/03/09	27.32					

GB

# Direct Production - Average Unit Prices

January 2004 to March 2009



NB - When category is not shown - No figures available for period

**Direct Production - ENGLAND Average Unit Prices**

<b>Green</b>			<b>Unit Price</b>	<b>Short Green</b>			<b>Unit Price</b>
1/01/07	to	31/03/07	34.46	1/01/07	to	31/03/07	31.82
1/02/07	to	30/04/07	43.17	1/02/07	to	30/04/07	32.41
1/03/07	to	31/05/07	43.22	1/03/07	to	31/05/07	33.45
1/04/07	to	30/06/07	42.90	1/04/07	to	30/06/07	30.99
1/05/07	to	31/07/07	37.71	1/05/07	to	31/07/07	33.59
1/06/07	to	31/08/07	41.40	1/06/07	to	31/08/07	34.65
1/07/07	to	30/09/07	46.29	1/07/07	to	30/09/07	36.55
1/08/07	to	31/10/07	44.14	1/08/07	to	31/10/07	34.63
1/09/07	to	30/11/07	41.34	1/09/07	to	30/11/07	34.36
1/10/07	to	31/12/07	41.34	1/10/07	to	31/12/07	37.07
1/11/07	to	31/01/08	38.15	1/11/07	to	31/01/08	33.34
1/12/07	to	29/02/08	36.95	1/12/07	to	29/02/08	30.43
1/01/08	to	31/03/08	42.03	1/01/08	to	31/03/08	34.87
1/02/08	to	30/04/08	41.29	1/02/08	to	30/04/08	31.93
1/03/08	to	31/05/08	41.00	1/03/08	to	31/05/08	31.74
1/04/08	to	30/06/08	40.84	1/04/08	to	30/06/08	31.44
1/05/08	to	31/07/08	40.49	1/05/08	to	31/07/08	30.49
1/06/08	to	31/08/08	35.21	1/06/08	to	31/08/08	32.80
1/07/08	to	30/09/08	33.16	1/07/08	to	30/09/08	34.72
1/08/08	to	31/10/08	34.12	1/08/08	to	31/10/08	29.83
1/09/08	to	30/11/08	34.00	1/09/08	to	30/11/08	27.46
1/10/08	to	31/12/08	34.68	1/10/08	to	31/12/08	27.43
1/11/08	to	31/01/09	29.74	1/11/08	to	31/01/09	26.00
1/12/08	to	28/02/09	26.75	1/12/08	to	28/02/09	25.78
1/01/09	to	31/03/09	29.16	1/01/09	to	31/03/09	25.91

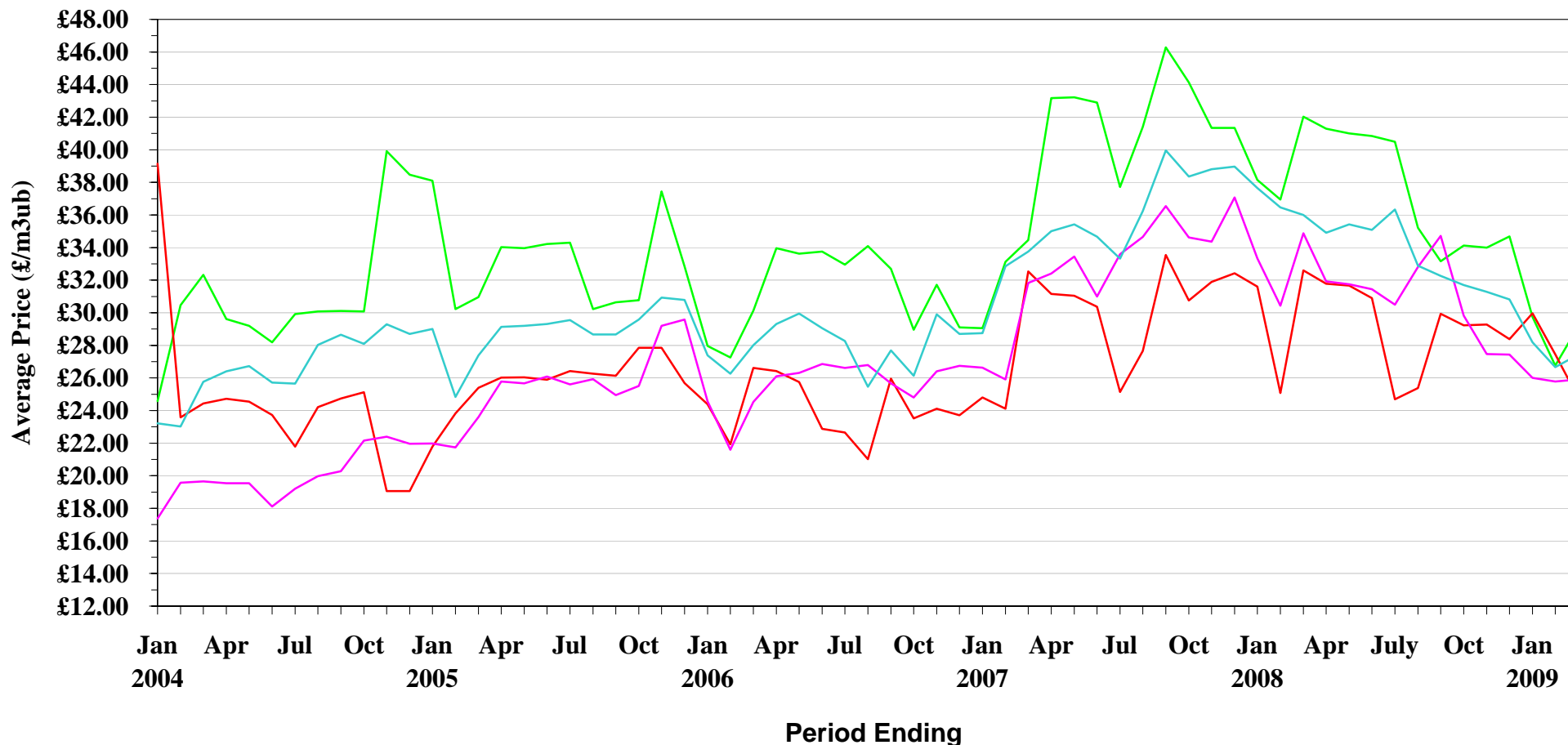
  

<b>Red</b>			<b>Unit Price</b>	<b>Summary for All</b>			<b>Unit Price</b>
1/01/07	to	31/03/07	32.54	1/01/07	to	31/03/07	33.76
1/02/07	to	30/04/07	31.16	1/02/07	to	30/04/07	35.00
1/03/07	to	31/05/07	31.05	1/03/07	to	31/05/07	35.42
1/04/07	to	30/06/07	30.37	1/04/07	to	30/06/07	34.67
1/05/07	to	31/07/07	25.14	1/05/07	to	31/07/07	33.32
1/06/07	to	31/08/07	27.66	1/06/07	to	31/08/07	36.25
1/07/07	to	30/09/07	33.55	1/07/07	to	30/09/07	39.96
1/08/07	to	31/10/07	30.75	1/08/07	to	31/10/07	38.36
1/09/07	to	30/11/07	31.89	1/09/07	to	30/11/07	38.80
1/10/07	to	31/12/07	32.42	1/10/07	to	31/12/07	38.97
1/11/07	to	31/01/08	31.61	1/11/07	to	31/01/08	37.65
1/12/07	to	29/02/08	25.07	1/12/07	to	29/02/08	36.47
1/01/08	to	31/03/08	32.60	1/01/08	to	31/03/08	36.00
1/02/08	to	30/04/08	31.78	1/02/08	to	30/04/08	34.90
1/03/08	to	31/05/08	31.68	1/03/08	to	31/05/08	35.42
1/04/08	to	30/06/08	30.90	1/04/08	to	30/06/08	35.08
1/05/08	to	31/07/08	24.70	1/05/08	to	31/07/08	36.34
1/06/08	to	31/08/08	25.39	1/06/08	to	31/08/08	32.88
1/07/08	to	30/09/08	29.93	1/07/08	to	30/09/08	32.25
1/08/08	to	31/10/08	29.24	1/08/08	to	31/10/08	31.70
1/09/08	to	30/11/08	29.28	1/09/08	to	30/11/08	31.29
1/10/08	to	31/12/08	28.37	1/10/08	to	31/12/08	30.81
1/11/08	to	31/01/09	29.96	1/11/08	to	31/01/09	28.19
1/12/08	to	28/02/09	27.45	1/12/08	to	28/02/09	26.66
1/01/09	to	31/03/09	24.77	1/01/09	to	31/03/09	27.44

**ENGLAND**

# Direct Production - Average Unit Prices

January 2004 to March 2009



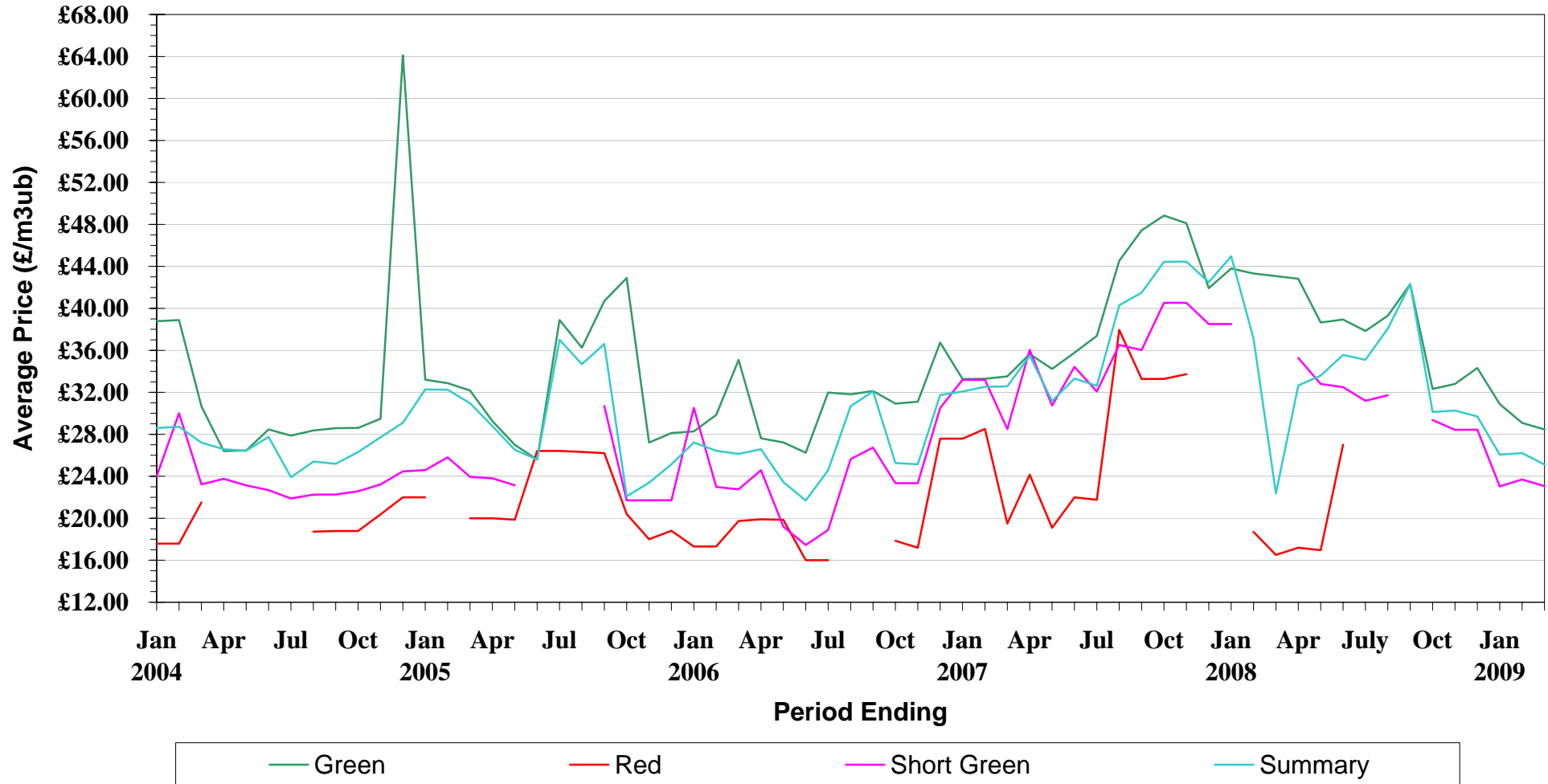
**Direct Production - WALES Average Unit Prices**

<b>Green</b>		Unit Price	<b>Short Green</b>		Unit Price
1/01/07	to 31/03/07	33.52	1/01/07	to 31/03/07	
1/02/07	to 30/04/07	35.64	1/02/07	to 30/04/07	36.05
1/03/07	to 31/05/07	34.23	1/03/07	to 31/05/07	30.74
1/04/07	to 30/06/07	35.77	1/04/07	to 30/06/07	34.43
1/05/07	to 31/07/07	37.38	1/05/07	to 31/07/07	32.07
1/06/07	to 31/08/07	44.54	1/06/07	to 31/08/07	36.51
1/07/07	to 30/09/07	47.43	1/07/07	to 30/09/07	36.03
1/08/07	to 31/10/07	48.84	1/08/07	to 31/10/07	40.53
1/09/07	to 30/11/07	48.11	1/09/07	to 30/11/07	40.52
1/10/07	to 31/12/07	41.92	1/10/07	to 31/12/07	
1/11/07	to 31/01/08	43.80	1/11/07	to 31/01/08	
1/12/07	to 29/02/08	43.32	1/12/07	to 29/02/08	
1/01/08	to 31/03/08	43.08	1/01/08	to 31/03/08	
1/02/08	to 30/04/08	42.81	1/02/08	to 30/04/08	35.28
1/03/08	to 31/05/08	38.66	1/03/08	to 31/05/08	32.80
1/04/08	to 30/06/08	38.93	1/04/08	to 30/06/08	32.50
1/05/08	to 31/07/08	37.84	1/05/08	to 31/07/08	31.19
1/06/08	to 31/08/08	39.30	1/06/08	to 31/08/08	31.72
1/07/08	to 30/09/08	42.30	1/07/08	to 30/09/08	
1/08/08	to 31/10/08	32.32	1/08/08	to 31/10/08	29.36
1/09/08	to 30/11/08	32.80	1/09/08	to 30/11/08	28.43
1/10/08	to 31/12/08	34.32	1/10/08	to 31/12/08	28.43
1/11/08	to 31/01/09	30.88	1/11/08	to 31/01/09	23.03
1/12/08	to 28/02/09	29.09	1/12/08	to 28/02/09	23.70
1/01/09	to 31/03/09	28.46	1/01/09	to 31/03/09	23.06
<b>Red</b>		Unit Price	<b>Summary for All</b>		Unit Price
1/01/07	to 31/03/07		1/01/07	to 31/03/07	32.56
1/02/07	to 30/04/07	24.15	1/02/07	to 30/04/07	35.49
1/03/07	to 31/05/07		1/03/07	to 31/05/07	31.17
1/04/07	to 30/06/07	22.00	1/04/07	to 30/06/07	33.31
1/05/07	to 31/07/07	21.76	1/05/07	to 31/07/07	32.62
1/06/07	to 31/08/07	37.94	1/06/07	to 31/08/07	40.29
1/07/07	to 30/09/07	33.27	1/07/07	to 30/09/07	41.49
1/08/07	to 31/10/07	33.27	1/08/07	to 31/10/07	44.43
1/09/07	to 30/11/07	33.73	1/09/07	to 30/11/07	44.46
1/10/07	to 31/12/07		1/10/07	to 31/12/07	41.86
1/11/07	to 31/01/08		1/11/07	to 31/01/08	44.96
1/12/07	to 29/02/08		1/12/07	to 29/02/08	37.13
1/01/08	to 31/03/08	16.50	1/01/08	to 31/03/08	22.37
1/02/08	to 30/04/08	17.20	1/02/08	to 30/04/08	32.65
1/03/08	to 31/05/08	16.96	1/03/08	to 31/05/08	33.59
1/04/08	to 30/06/08	27.00	1/04/08	to 30/06/08	35.57
1/05/08	to 31/07/08		1/05/08	to 31/07/08	35.10
1/06/08	to 31/08/08		1/06/08	to 31/08/08	38.08
1/07/08	to 30/09/08		1/07/08	to 30/09/08	42.30
1/08/08	to 31/10/08		1/08/08	to 31/10/08	30.13
1/09/08	to 30/11/08		1/09/08	to 30/11/08	30.26
1/10/08	to 31/12/08		1/10/08	to 31/12/08	29.70
1/11/08	to 31/01/09		1/11/08	to 31/01/09	26.07
1/12/08	to 28/02/09		1/12/08	to 28/02/09	26.21
1/01/09	to 31/03/09		1/01/09	to 31/03/09	25.12

**WALES**

## Direct Production - Average Unit Prices

January 2004 to March 2009



NB - When category is not shown - No figures available for period

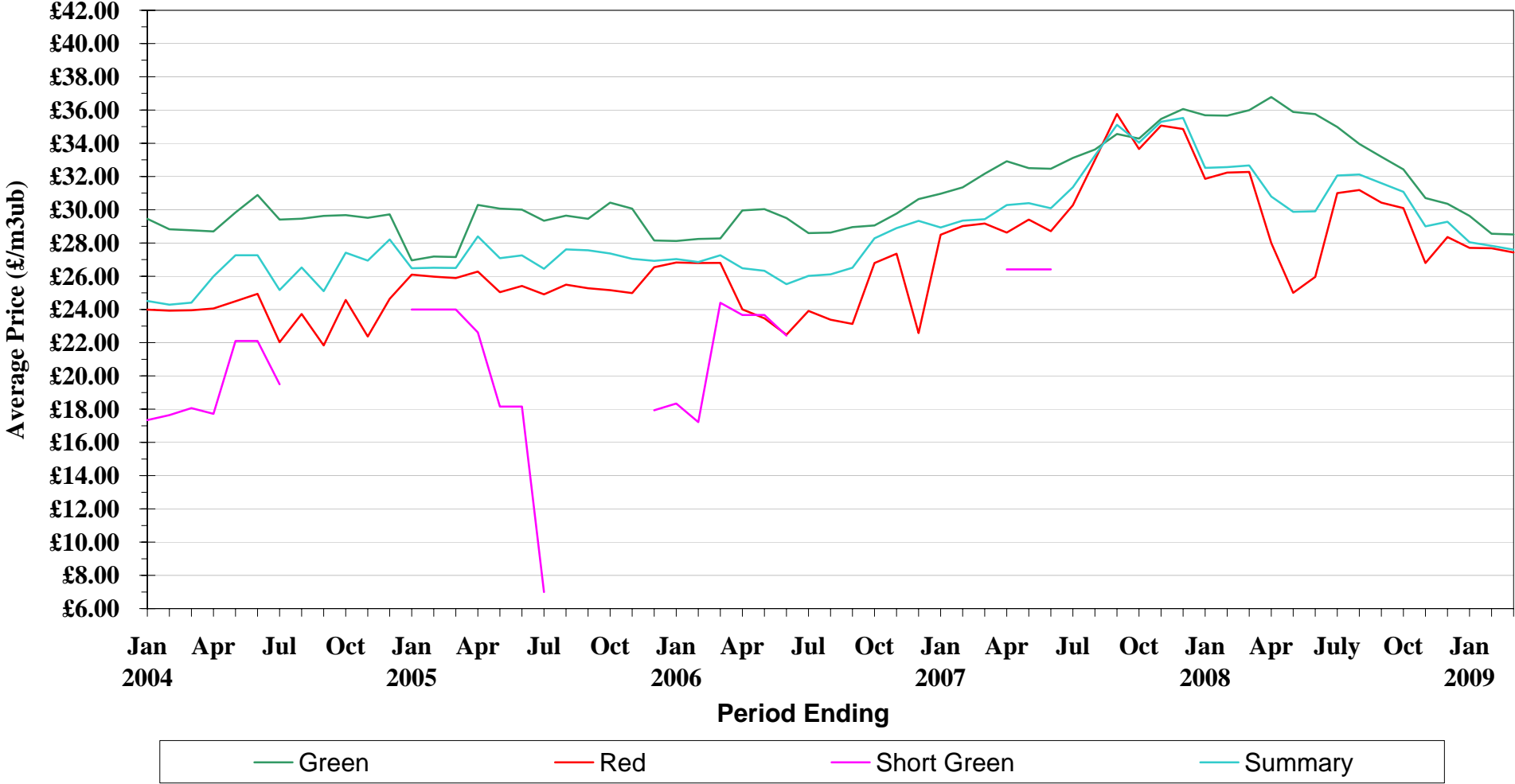
**Direct Production - SCOTLAND Average Unit Prices**

<b>Green</b>			<b>Unit Price</b>	<b>Short Green</b>			<b>Unit Price</b>
1/01/07	to	31/03/07	32.16	1/01/07	to	31/03/07	
1/02/07	to	30/04/07	32.92	1/02/07	to	30/04/07	
1/03/07	to	31/05/07	32.51	1/03/07	to	31/05/07	
1/04/07	to	30/06/07	32.47	1/04/07	to	30/06/07	
1/05/07	to	31/07/07	33.12	1/05/07	to	31/07/07	
1/06/07	to	31/08/07	33.63	1/06/07	to	31/08/07	
1/07/07	to	30/09/07	34.55	1/07/07	to	30/09/07	
1/08/07	to	31/10/07	34.28	1/08/07	to	31/10/07	
1/09/07	to	30/11/07	35.46	1/09/07	to	30/11/07	
1/10/07	to	31/12/07	36.06	1/10/07	to	31/12/07	
1/11/07	to	31/01/08	35.68	1/11/07	to	31/01/08	
1/12/07	to	29/02/08	35.66	1/12/07	to	29/02/08	
1/01/08	to	31/03/08	35.99	1/01/08	to	31/03/08	
1/02/08	to	30/04/08	36.78	1/02/08	to	30/04/08	
1/03/08	to	31/05/08	35.88	1/03/08	to	31/05/08	
1/04/08	to	30/06/08	35.76	1/04/08	to	30/06/08	
1/05/08	to	31/07/08	34.98	1/05/08	to	31/07/08	
1/06/08	to	31/08/08	33.96	1/06/08	to	31/08/08	
1/07/08	to	30/09/08	33.19	1/07/08	to	30/09/08	
1/08/08	to	31/10/08	32.43	1/08/08	to	31/10/08	
1/09/08	to	30/11/08	30.70	1/09/08	to	30/11/08	
1/10/08	to	31/12/08	30.36	1/10/08	to	31/12/08	
1/11/08	to	31/01/09	29.63	1/11/08	to	31/01/09	
1/12/08	to	28/02/09	28.55	1/12/08	to	28/02/09	
1/01/09	to	31/03/09	28.51	1/01/09	to	31/03/09	
<b>Red</b>			<b>Unit Price</b>	<b>Summary for All</b>			<b>Unit Price</b>
1/01/07	to	31/03/07	29.17	1/01/07	to	31/03/07	29.43
1/02/07	to	30/04/07	28.63	1/02/07	to	30/04/07	30.28
1/03/07	to	31/05/07	29.41	1/03/07	to	31/05/07	30.40
1/04/07	to	30/06/07	28.71	1/04/07	to	30/06/07	30.09
1/05/07	to	31/07/07	30.27	1/05/07	to	31/07/07	31.35
1/06/07	to	31/08/07	32.99	1/06/07	to	31/08/07	33.26
1/07/07	to	30/09/07	35.76	1/07/07	to	30/09/07	35.11
1/08/07	to	31/10/07	33.65	1/08/07	to	31/10/07	34.04
1/09/07	to	30/11/07	35.06	1/09/07	to	30/11/07	35.29
1/10/07	to	31/12/07	34.85	1/10/07	to	31/12/07	35.52
1/11/07	to	31/01/08	31.86	1/11/07	to	31/01/08	32.52
1/12/07	to	29/02/08	32.23	1/12/07	to	29/02/08	32.57
1/01/08	to	31/03/08	32.27	1/01/08	to	31/03/08	32.67
1/02/08	to	30/04/08	28.00	1/02/08	to	30/04/08	30.80
1/03/08	to	31/05/08	25.00	1/03/08	to	31/05/08	29.88
1/04/08	to	30/06/08	25.96	1/04/08	to	30/06/08	29.91
1/05/08	to	31/07/08	31.00	1/05/08	to	31/07/08	32.06
1/06/08	to	31/08/08	31.18	1/06/08	to	31/08/08	32.12
1/07/08	to	30/09/08	30.43	1/07/08	to	30/09/08	31.60
1/08/08	to	31/10/08	30.10	1/08/08	to	31/10/08	31.08
1/09/08	to	30/11/08	26.79	1/09/08	to	30/11/08	29.00
1/10/08	to	31/12/08	28.36	1/10/08	to	31/12/08	29.28
1/11/08	to	31/01/09	27.71	1/11/08	to	31/01/09	28.04
1/12/08	to	28/02/09	27.69	1/12/08	to	28/02/09	27.83
1/01/09	to	31/03/09	27.43	1/01/09	to	31/03/09	27.60

**SCOTLAND**

**Direct Production - Average Unit Prices**

January 2004 to March 2009



NB - When category is not shown - No figures available for period



**STANDING SALES - GB AVERAGE UNIT PRICES**

			Unit Price (£/m3obs)				Unit Price (£/tonne)
<b>Thinning (Instalment)</b>	1/01/07	to 31/03/07	16.13	<b>Clearfell (Weight)</b>	1/01/07	to 31/03/07	11.20
	1/02/07	to 30/04/07	16.23		1/02/07	to 30/04/07	13.47
	1/03/07	to 31/05/07	16.39		1/03/07	to 31/05/07	15.88
	1/04/07	to 30/06/07	15.20		1/04/07	to 30/06/07	14.71
	1/05/07	to 31/07/07	15.57		1/05/07	to 31/07/07	14.69
	1/06/07	to 31/08/07	19.09		1/06/07	to 31/08/07	13.42
	1/07/07	to 30/09/07	19.61		1/07/07	to 30/09/07	14.77
	1/08/07	to 31/10/07	18.39		1/08/07	to 31/10/07	16.07
	1/09/07	to 30/11/07	7.82		1/09/07	to 30/11/07	16.54
	1/10/07	to 31/12/07	18.48		1/10/07	to 31/12/07	14.72
	1/11/07	to 31/01/08	15.20		1/11/07	to 31/01/08	15.03
	1/12/07	to 29/02/08	14.00		1/12/07	to 29/02/08	14.26
	1/01/08	to 31/03/08	18.66		1/01/08	to 31/03/08	14.66
	1/02/08	to 30/04/08	18.51		1/02/08	to 30/04/08	15.48
	1/03/08	to 31/05/08	17.82		1/03/08	to 31/05/08	15.68
	1/04/08	to 30/06/08	17.12		1/04/08	to 30/06/08	14.53
	1/05/08	to 31/07/08	12.78		1/05/08	to 31/07/08	10.79
	1/06/08	to 31/08/08	11.44		1/06/08	to 31/08/08	9.48
	1/07/08	to 30/09/08	11.35		1/07/08	to 30/09/08	9.94
	1/08/08	to 31/10/08	12.27		1/08/08	to 31/10/08	9.28
1/09/08	to 30/11/08	9.95	1/09/08	to 30/11/08	9.16		
1/10/08	to 31/12/08	11.96	1/10/08	to 31/12/08	8.44		
1/11/08	to 31/01/09	12.82	1/11/08	to 31/01/09	8.91		
1/12/08	to 28/02/09	10.41	1/12/08	to 28/02/09	8.68		
1/01/09	to 31/03/09	11.02	1/01/09	to 31/03/09	10.72		

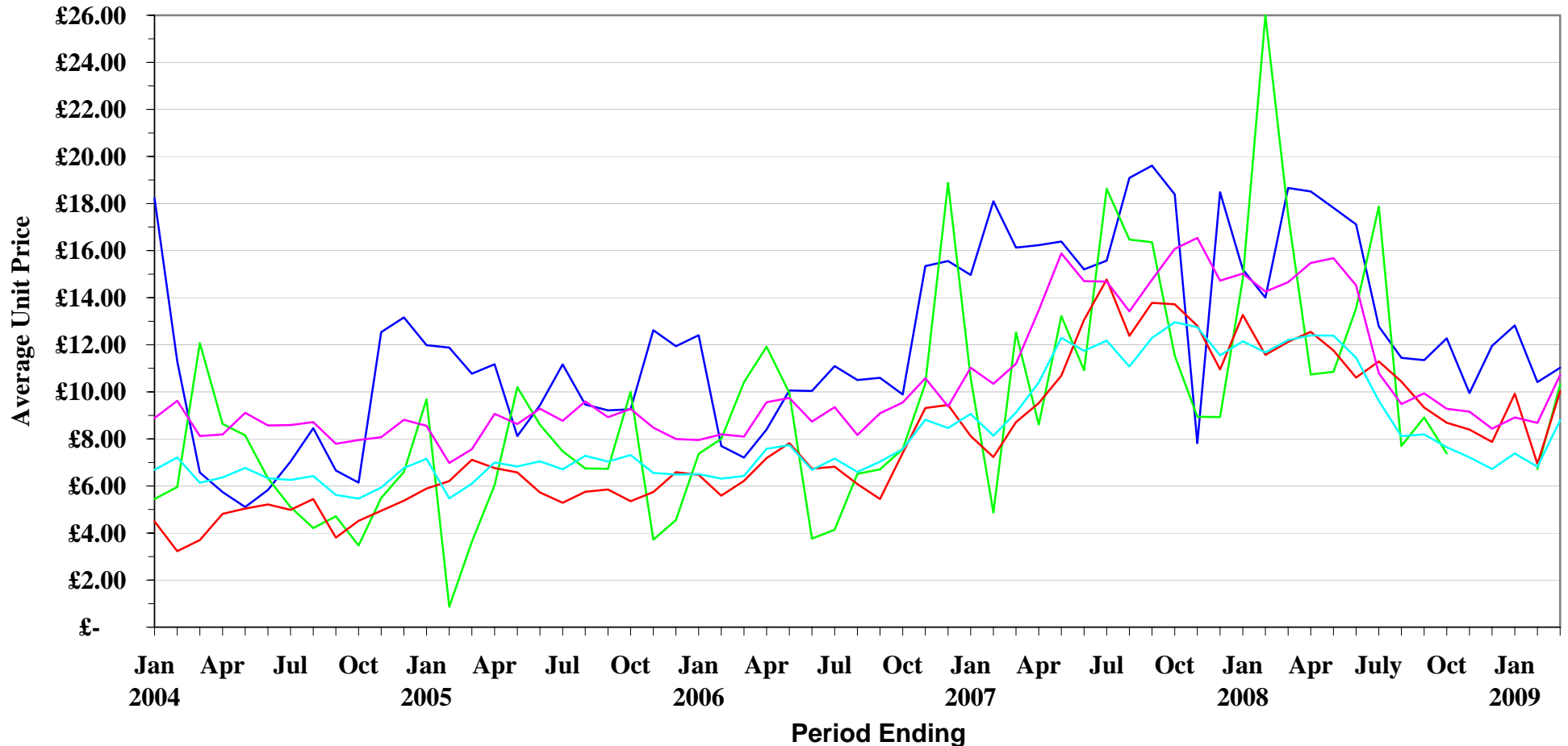
			Unit Price (£/m3obs)				Unit Price (£/m3obs)
<b>Clearfell (Instalment)</b>	1/01/07	to 31/03/07	12.52	<b>Summary</b>	1/01/07	to 31/03/07	9.12
	1/02/07	to 30/04/07	8.61		1/02/07	to 30/04/07	10.40
	1/03/07	to 31/05/07	13.22		1/03/07	to 31/05/07	12.29
	1/04/07	to 30/06/07	10.92		1/04/07	to 30/06/07	11.74
	1/05/07	to 31/07/07	18.63		1/05/07	to 31/07/07	12.17
	1/06/07	to 31/08/07	16.47		1/06/07	to 31/08/07	11.08
	1/07/07	to 30/09/07	16.36		1/07/07	to 30/09/07	12.29
	1/08/07	to 31/10/07	11.54		1/08/07	to 31/10/07	12.96
	1/09/07	to 30/11/07	8.94		1/09/07	to 30/11/07	12.75
	1/10/07	to 31/12/07	8.93		1/10/07	to 31/12/07	11.55
	1/11/07	to 31/01/08	14.80		1/11/07	to 31/01/08	12.15
	1/12/07	to 29/02/08	26.00		1/12/07	to 29/02/08	11.68
	1/01/08	to 31/03/08	17.53		1/01/08	to 31/03/08	12.18
	1/02/08	to 30/04/08	10.74		1/02/08	to 30/04/08	12.40
	1/03/08	to 31/05/08	10.85		1/03/08	to 31/05/08	12.39
	1/04/08	to 30/06/08	13.54		1/04/08	to 30/06/08	11.45
	1/05/08	to 31/07/08	17.88		1/05/08	to 31/07/08	9.62
	1/06/08	to 31/08/08	7.70		1/06/08	to 31/08/08	8.12
	1/07/08	to 30/09/08	8.91		1/07/08	to 30/09/08	8.19
	1/08/08	to 31/10/08	7.38		1/08/08	to 31/10/08	7.64
1/09/08	to 30/11/08		1/09/08	to 30/11/08	7.22		
1/10/08	to 31/12/08		1/10/08	to 31/12/08	6.72		
1/11/08	to 31/01/09		1/11/08	to 31/01/09	7.38		
1/12/08	to 28/02/09	6.72	1/12/08	to 28/02/09	6.82		
1/01/09	to 31/03/09	10.30	1/01/09	to 31/03/09	8.79		

			Unit Price (£/tonne)
<b>Thinning (Weight)</b>	1/01/07	to 31/03/07	8.71
	1/02/07	to 30/04/07	9.52
	1/03/07	to 31/05/07	10.69
	1/04/07	to 30/06/07	13.06
	1/05/07	to 31/07/07	14.78
	1/06/07	to 31/08/07	12.38
	1/07/07	to 30/09/07	13.78
	1/08/07	to 31/10/07	13.72
	1/09/07	to 30/11/07	12.80
	1/10/07	to 31/12/07	10.95
	1/11/07	to 31/01/08	13.27
	1/12/07	to 29/02/08	11.57
	1/01/08	to 31/03/08	11.92
	1/02/08	to 30/04/08	12.55
	1/03/08	to 31/05/08	11.76
	1/04/08	to 30/06/08	10.61
	1/05/08	to 31/07/08	11.29
	1/06/08	to 31/08/08	10.44
	1/07/08	to 30/09/08	9.34
	1/08/08	to 31/10/08	8.69
1/09/08	to 30/11/08	8.40	
1/10/08	to 31/12/08	7.87	
1/11/08	to 31/01/09	9.92	
1/12/08	to 28/02/09	6.94	
1/01/09	to 31/03/09	10.01	

# Standing Sales - Average Unit Price

January 2004 to March 2009

GB



— Thinning (Instalment) — Clearfell (Instalment) — Thinning (Weight) — Clearfell (Weight) — Summary

NB - When category is not shown - No figures available for period

**STANDING SALES - ENGLAND AVERAGE UNIT PRICES**

			Unit Price (£/m3obs)				Unit Price (£/tonne)
<b>Thinning (Instalment)</b>	1/01/07	to 31/03/07	16.13	<b>Clearfell (Weight)</b>	1/01/07	to 31/03/07	17.40
	1/02/07	to 30/04/07	16.23		1/02/07	to 30/04/07	18.81
	1/03/07	to 31/05/07	16.39		1/03/07	to 31/05/07	20.93
	1/04/07	to 30/06/07	15.20		1/04/07	to 30/06/07	19.14
	1/05/07	to 31/07/07	15.57		1/05/07	to 31/07/07	22.86
	1/06/07	to 31/08/07	19.09		1/06/07	to 31/08/07	21.01
	1/07/07	to 30/09/07	19.61		1/07/07	to 30/09/07	22.02
	1/08/07	to 31/10/07	18.39		1/08/07	to 31/10/07	18.69
	1/09/07	to 30/11/07	7.82		1/09/07	to 30/11/07	17.93
	1/10/07	to 31/12/07	18.48		1/10/07	to 31/12/07	19.37
	1/11/07	to 31/01/08	15.20		1/11/07	to 31/01/08	22.18
	1/12/07	to 29/02/08	14.00		1/12/07	to 29/02/08	15.80
	1/01/08	to 31/03/08	18.66		1/01/08	to 31/03/08	19.74
	1/02/08	to 30/04/08	18.51		1/02/08	to 30/04/08	18.86
	1/03/08	to 31/05/08	17.82		1/03/08	to 31/05/08	19.85
	1/04/08	to 30/06/08	17.12		1/04/08	to 30/06/08	20.00
	1/05/08	to 31/07/08	14.47		1/05/08	to 31/07/08	18.91
	1/06/08	to 31/08/08	12.34		1/06/08	to 31/08/08	15.88
	1/07/08	to 30/09/08	12.21		1/07/08	to 30/09/08	15.95
	1/08/08	to 31/10/08	12.27		1/08/08	to 31/10/08	12.51
1/09/08	to 30/11/08	12.95	1/09/08	to 30/11/08	9.76		
1/10/08	to 31/12/08	14.18	1/10/08	to 31/12/08	9.78		
1/11/08	to 31/01/09	15.11	1/11/08	to 31/01/09	14.19		
1/12/08	to 28/02/09	10.41	1/12/08	to 28/02/09	13.23		
1/01/09	to 31/03/09	11.02	1/01/09	to 31/03/09	15.00		

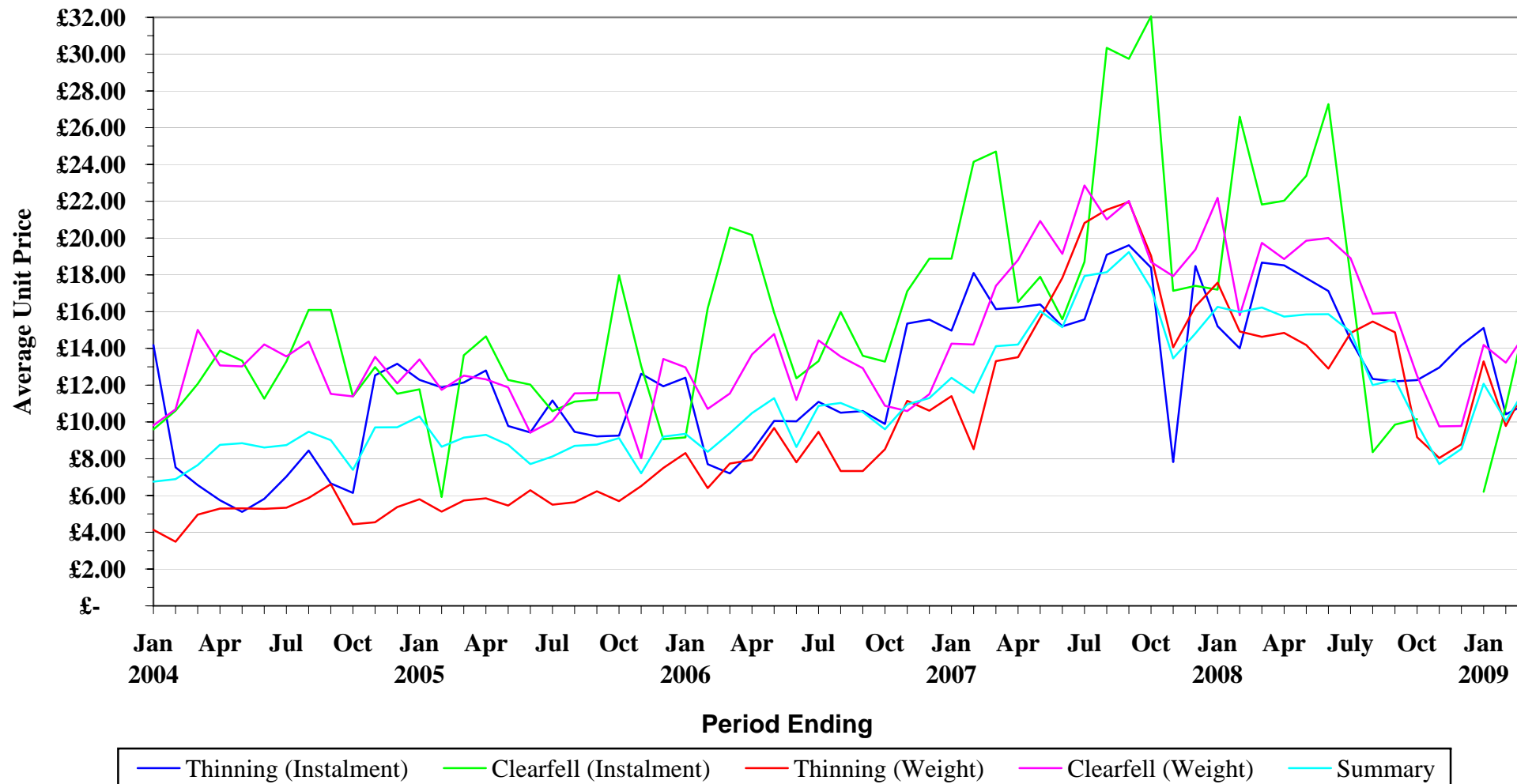
			Unit Price (£/m3obs)				Unit Price (£/m3obs)
<b>Clearfell (Instalment)</b>	1/01/07	to 31/03/07	24.71	<b>Summary</b>	1/01/07	to 31/03/07	14.12
	1/02/07	to 30/04/07	16.53		1/02/07	to 30/04/07	13.83
	1/03/07	to 31/05/07	17.89		1/03/07	to 31/05/07	16.03
	1/04/07	to 30/06/07	15.58		1/04/07	to 30/06/07	15.15
	1/05/07	to 31/07/07	18.70		1/05/07	to 31/07/07	17.94
	1/06/07	to 31/08/07	30.34		1/06/07	to 31/08/07	16.55
	1/07/07	to 30/09/07	29.75		1/07/07	to 30/09/07	19.24
	1/08/07	to 31/10/07	32.06		1/08/07	to 31/10/07	17.26
	1/09/07	to 30/11/07	12.85		1/09/07	to 30/11/07	13.17
	1/10/07	to 31/12/07	17.40		1/10/07	to 31/12/07	14.81
	1/11/07	to 31/01/08	17.19		1/11/07	to 31/01/08	16.25
	1/12/07	to 29/02/08	26.59		1/12/07	to 29/02/08	15.97
	1/01/08	to 31/03/08	21.82		1/01/08	to 31/03/08	16.22
	1/02/08	to 30/04/08	22.03		1/02/08	to 30/04/08	15.73
	1/03/08	to 31/05/08	23.38		1/03/08	to 31/05/08	15.85
	1/04/08	to 30/06/08	27.28		1/04/08	to 30/06/08	15.86
	1/05/08	to 31/07/08	17.88		1/05/08	to 31/07/08	14.91
	1/06/08	to 31/08/08	8.36		1/06/08	to 31/08/08	12.00
	1/07/08	to 30/09/08	9.85		1/07/08	to 30/09/08	12.31
	1/08/08	to 31/10/08	10.15		1/08/08	to 31/10/08	9.90
1/09/08	to 30/11/08		1/09/08	to 30/11/08	7.71		
1/10/08	to 31/12/08		1/10/08	to 31/12/08	8.54		
1/11/08	to 31/01/09	6.20	1/11/08	to 31/01/09	12.08		
1/12/08	to 28/02/09	10.83	1/12/08	to 28/02/09	10.06		
1/01/09	to 31/03/09	16.13	1/01/09	to 31/03/09	12.02		

			Unit Price (£/tonne)
<b>Thinning (Weight)</b>	1/01/07	to 31/03/07	13.31
	1/02/07	to 30/04/07	13.52
	1/03/07	to 31/05/07	15.66
	1/04/07	to 30/06/07	17.84
	1/05/07	to 31/07/07	20.82
	1/06/07	to 31/08/07	21.54
	1/07/07	to 30/09/07	21.96
	1/08/07	to 31/10/07	19.04
	1/09/07	to 30/11/07	14.06
	1/10/07	to 31/12/07	16.28
	1/11/07	to 31/01/08	17.57
	1/12/07	to 29/02/08	14.91
	1/01/08	to 31/03/08	14.63
	1/02/08	to 30/04/08	14.84
	1/03/08	to 31/05/08	14.18
	1/04/08	to 30/06/08	12.90
	1/05/08	to 31/07/08	14.83
	1/06/08	to 31/08/08	15.46
	1/07/08	to 30/09/08	14.88
	1/08/08	to 31/10/08	9.17
1/09/08	to 30/11/08	8.04	
1/10/08	to 31/12/08	8.78	
1/11/08	to 31/01/09	13.29	
1/12/08	to 28/02/09	9.78	
1/01/09	to 31/03/09	12.08	

**ENGLAND**

# Standing Sales - Average Unit Price

January 2004 to March 2009



NB - When category is not shown - No figures available for period

**STANDING SALES - WALES AVERAGE UNIT PRICES**

			Unit Price (£/m3obs)				Unit Price (£/tonne)
<b>Thinning (Instalment)</b>	1/01/07	to 31/03/07		<b>Clearfell (Weight)</b>	1/01/07	to 31/03/07	5.81
	1/02/07	to 30/04/07			1/02/07	to 30/04/07	15.58
	1/03/07	to 31/05/07			1/03/07	to 31/05/07	16.35
	1/04/07	to 30/06/07			1/04/07	to 30/06/07	20.62
	1/05/07	to 31/07/07			1/05/07	to 31/07/07	21.25
	1/06/07	to 31/08/07			1/06/07	to 31/08/07	22.43
	1/07/07	to 30/09/07			1/07/07	to 30/09/07	22.00
	1/08/07	to 31/10/07			1/08/07	to 31/10/07	24.89
	1/09/07	to 30/11/07			1/09/07	to 30/11/07	25.99
	1/10/07	to 31/12/07			1/10/07	to 31/12/07	22.83
	1/11/07	to 31/01/08			1/11/07	to 31/01/08	22.65
	1/12/07	to 29/02/08			1/12/07	to 29/02/08	21.81
	1/01/08	to 31/03/08			1/01/08	to 31/03/08	12.34
	1/02/08	to 30/04/08			1/02/08	to 30/04/08	25.62
	1/03/08	to 31/05/08			1/03/08	to 31/05/08	25.05
	1/04/08	to 30/06/08			1/04/08	to 30/06/08	20.21
	1/05/08	to 31/07/08			1/05/08	to 31/07/08	9.16
	1/06/08	to 31/08/08			1/06/08	to 31/08/08	8.03
	1/07/08	to 30/09/08			1/07/08	to 30/09/08	8.23
	1/08/08	to 31/10/08			1/08/08	to 31/10/08	16.72
1/09/08	to 30/11/08		1/09/08	to 30/11/08	16.55		
1/10/08	to 31/12/08		1/10/08	to 31/12/08	8.95		
1/11/08	to 31/01/09		1/11/08	to 31/01/09	12.71		
1/12/08	to 28/02/09		1/12/08	to 28/02/09	12.13		
1/01/09	to 31/03/09		1/01/09	to 31/03/09	13.14		

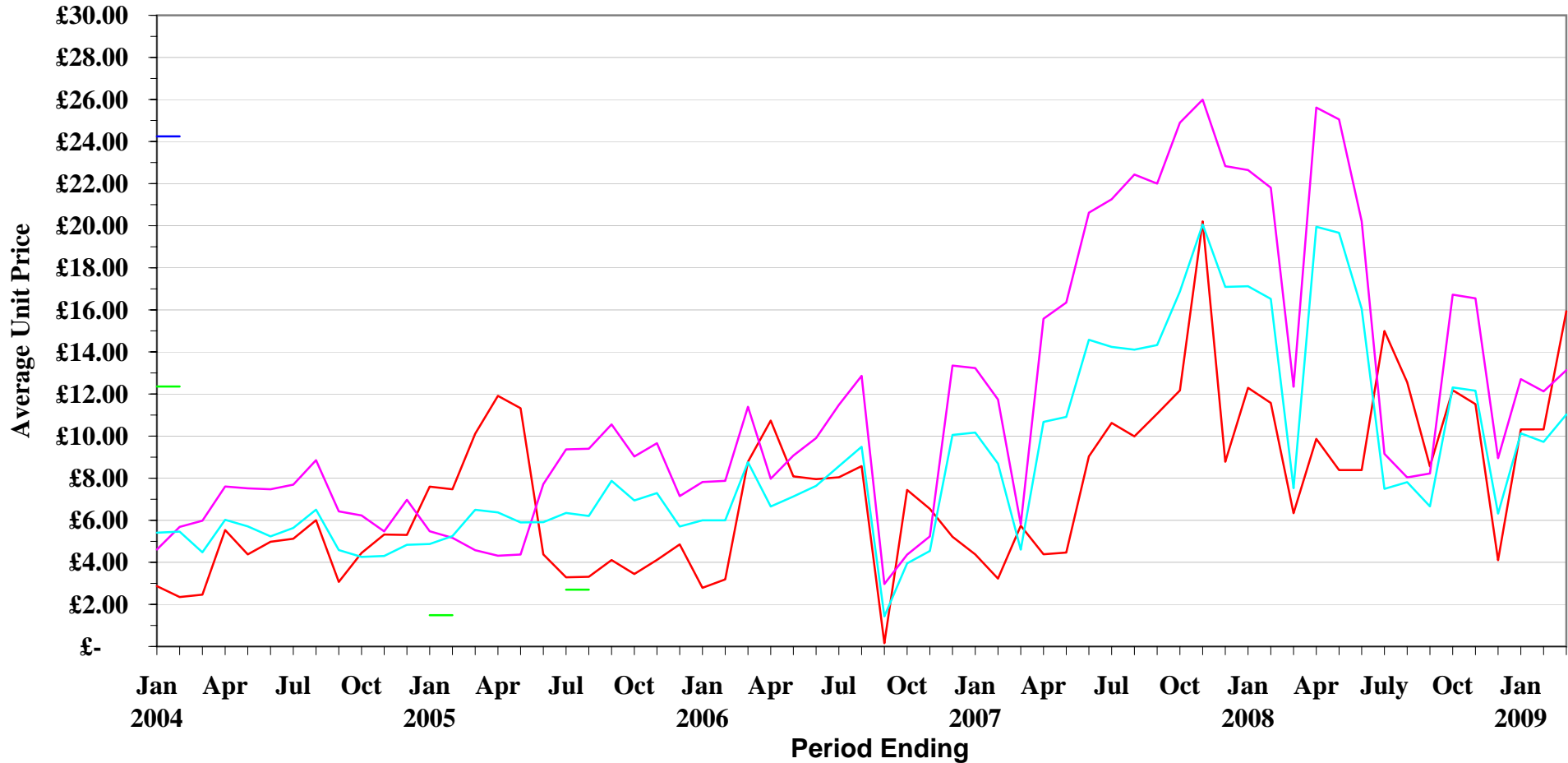
			Unit Price (£/m3obs)				Unit Price (£/tonne)
<b>Clearfell (Instalment)</b>	1/01/07	to 31/03/07		<b>Summary</b>	1/01/07	to 31/03/07	4.60
	1/02/07	to 30/04/07			1/02/07	to 30/04/07	10.68
	1/03/07	to 31/05/07			1/03/07	to 31/05/07	10.91
	1/04/07	to 30/06/07			1/04/07	to 30/06/07	14.58
	1/05/07	to 31/07/07			1/05/07	to 31/07/07	14.24
	1/06/07	to 31/08/07			1/06/07	to 31/08/07	14.11
	1/07/07	to 30/09/07			1/07/07	to 30/09/07	14.33
	1/08/07	to 31/10/07			1/08/07	to 31/10/07	16.88
	1/09/07	to 30/11/07			1/09/07	to 30/11/07	20.06
	1/10/07	to 31/12/07			1/10/07	to 31/12/07	17.09
	1/11/07	to 31/01/08			1/11/07	to 31/01/08	17.12
	1/12/07	to 29/02/08			1/12/07	to 29/02/08	16.52
	1/01/08	to 31/03/08			1/01/08	to 31/03/08	7.52
	1/02/08	to 30/04/08			1/02/08	to 30/04/08	19.95
	1/03/08	to 31/05/08			1/03/08	to 31/05/08	19.66
	1/04/08	to 30/06/08			1/04/08	to 30/06/08	16.05
	1/05/08	to 31/07/08			1/05/08	to 31/07/08	7.49
	1/06/08	to 31/08/08			1/06/08	to 31/08/08	7.81
	1/07/08	to 30/09/08			1/07/08	to 30/09/08	6.66
	1/08/08	to 31/10/08			1/08/08	to 31/10/08	12.31
1/09/08	to 30/11/08		1/09/08	to 30/11/08	12.16		
1/10/08	to 31/12/08		1/10/08	to 31/12/08	6.32		
1/11/08	to 31/01/09		1/11/08	to 31/01/09	10.13		
1/12/08	to 28/02/09		1/12/08	to 28/02/09	9.72		
1/01/09	to 31/03/09		1/01/09	to 31/03/09	11.02		

			Unit Price (£/tonne)
<b>Thinning (Weight)</b>	1/01/07	to 31/03/07	5.74
	1/02/07	to 30/04/07	4.38
	1/03/07	to 31/05/07	4.46
	1/04/07	to 30/06/07	9.04
	1/05/07	to 31/07/07	10.63
	1/06/07	to 31/08/07	9.99
	1/07/07	to 30/09/07	11.06
	1/08/07	to 31/10/07	12.17
	1/09/07	to 30/11/07	20.21
	1/10/07	to 31/12/07	8.78
	1/11/07	to 31/01/08	12.30
	1/12/07	to 29/02/08	11.57
	1/01/08	to 31/03/08	6.34
	1/02/08	to 30/04/08	
	1/03/08	to 31/05/08	8.38
	1/04/08	to 30/06/08	8.38
	1/05/08	to 31/07/08	
	1/06/08	to 31/08/08	12.56
	1/07/08	to 30/09/08	8.56
	1/08/08	to 31/10/08	12.18
1/09/08	to 30/11/08	11.52	
1/10/08	to 31/12/08	4.10	
1/11/08	to 31/01/09	10.32	
1/12/08	to 28/02/09	10.32	
1/01/09	to 31/03/09	15.94	

**WALES**

# Standing Sales - Average Unit Price

January 2004 to March 2009



— Thinning (Instalment)    — Clearfell (Instalment)    — Thinning (Weight)    — Clearfell (Weight)    — Summary

NB - When category is not shown - No figures available for period

**STANDING SALES - SCOTLAND AVERAGE UNIT PRICES**

			Unit Price (£/m3obs)				Unit Price (£/tonne)
<b>Thinning (Instalment)</b>	1/01/07	to 31/03/07		<b>Clearfell (Weight)</b>	1/01/07	to 31/03/07	9.03
	1/02/07	to 30/04/07			1/02/07	to 30/04/07	11.79
	1/03/07	to 31/05/07			1/03/07	to 31/05/07	12.95
	1/04/07	to 30/06/07			1/04/07	to 30/06/07	10.92
	1/05/07	to 31/07/07			1/05/07	to 31/07/07	9.04
	1/06/07	to 31/08/07			1/06/07	to 31/08/07	10.04
	1/07/07	to 30/09/07			1/07/07	to 30/09/07	12.35
	1/08/07	to 31/10/07			1/08/07	to 31/10/07	13.83
	1/09/07	to 30/11/07			1/09/07	to 30/11/07	14.86
	1/10/07	to 31/12/07			1/10/07	to 31/12/07	12.53
	1/11/07	to 31/01/08			1/11/07	to 31/01/08	12.39
	1/12/07	to 29/02/08			1/12/07	to 29/02/08	12.07
	1/01/08	to 31/03/08			1/01/08	to 31/03/08	11.85
	1/02/08	to 30/04/08			1/02/08	to 30/04/08	12.63
	1/03/08	to 31/05/08			1/03/08	to 31/05/08	10.90
	1/04/08	to 30/06/08			1/04/08	to 30/06/08	10.87
	1/05/08	to 31/07/08			1/05/08	to 31/07/08	8.30
	1/06/08	to 31/08/08			1/06/08	to 31/08/08	7.93
	1/07/08	to 30/09/08			1/07/08	to 30/09/08	8.92
	1/08/08	to 31/10/08			1/08/08	to 31/10/08	7.76
1/09/08	to 30/11/08		1/09/08	to 30/11/08	8.38		
1/10/08	to 31/12/08		1/10/08	to 31/12/08	8.10		
1/11/08	to 31/01/09		1/11/08	to 31/01/09	7.23		
1/12/08	to 28/02/09		1/12/08	to 28/02/09	6.59		
1/01/09	to 31/03/09		1/01/09	to 31/03/09	6.90		

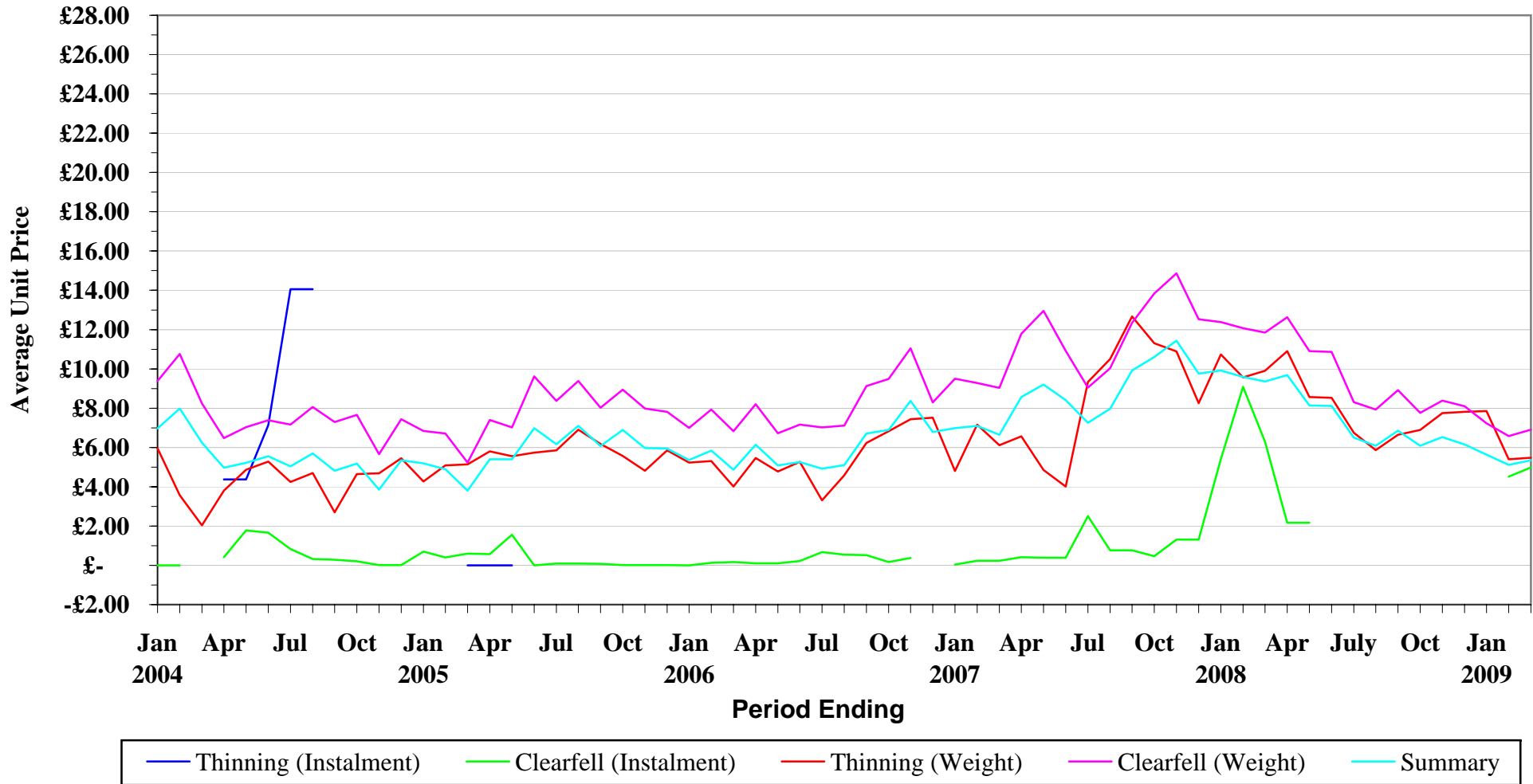
			Unit Price (£/m3obs)				Unit Price (£/m3obs)
<b>Clearfell (Instalment)</b>	1/01/07	to 31/03/07	0.24	<b>Summary</b>	1/01/07	to 31/03/07	6.64
	1/02/07	to 30/04/07	0.42		1/02/07	to 30/04/07	8.57
	1/03/07	to 31/05/07	0.39		1/03/07	to 31/05/07	9.21
	1/04/07	to 30/06/07	0.39		1/04/07	to 30/06/07	8.41
	1/05/07	to 31/07/07			1/05/07	to 31/07/07	7.26
	1/06/07	to 31/08/07			1/06/07	to 31/08/07	7.97
	1/07/07	to 30/09/07			1/07/07	to 30/09/07	9.91
	1/08/07	to 31/10/07			1/08/07	to 31/10/07	10.60
	1/09/07	to 30/11/07			1/09/07	to 30/11/07	11.43
	1/10/07	to 31/12/07	1.31		1/10/07	to 31/12/07	9.76
	1/11/07	to 31/01/08	5.42		1/11/07	to 31/01/08	9.92
	1/12/07	to 29/02/08			1/12/07	to 29/02/08	9.59
	1/01/08	to 31/03/08	6.29		1/01/08	to 31/03/08	9.36
	1/02/08	to 30/04/08	2.16		1/02/08	to 30/04/08	9.68
	1/03/08	to 31/05/08	2.16		1/03/08	to 31/05/08	8.13
	1/04/08	to 30/06/08			1/04/08	to 30/06/08	8.12
	1/05/08	to 31/07/08			1/05/08	to 31/07/08	6.51
	1/06/08	to 31/08/08			1/06/08	to 31/08/08	6.09
	1/07/08	to 30/09/08			1/07/08	to 30/09/08	6.85
	1/08/08	to 31/10/08			1/08/08	to 31/10/08	6.09
1/09/08	to 30/11/08		1/09/08	to 30/11/08	6.54		
1/10/08	to 31/12/08		1/10/08	to 31/12/08	6.15		
1/11/08	to 31/01/09		1/11/08	to 31/01/09	5.63		
1/12/08	to 28/02/09	4.52	1/12/08	to 28/02/09	5.11		
1/01/09	to 31/03/09	4.99	1/01/09	to 31/03/09	5.35		

			Unit Price (£/tonne)
<b>Thinning (Weight)</b>	1/01/07	to 31/03/07	6.11
	1/02/07	to 30/04/07	6.57
	1/03/07	to 31/05/07	4.85
	1/04/07	to 30/06/07	4.01
	1/05/07	to 31/07/07	9.34
	1/06/07	to 31/08/07	10.50
	1/07/07	to 30/09/07	12.66
	1/08/07	to 31/10/07	11.30
	1/09/07	to 30/11/07	10.90
	1/10/07	to 31/12/07	8.25
	1/11/07	to 31/01/08	10.73
	1/12/07	to 29/02/08	9.57
	1/01/08	to 31/03/08	9.91
	1/02/08	to 30/04/08	10.90
	1/03/08	to 31/05/08	8.57
	1/04/08	to 30/06/08	8.53
	1/05/08	to 31/07/08	6.75
	1/06/08	to 31/08/08	5.87
	1/07/08	to 30/09/08	6.65
	1/08/08	to 31/10/08	6.89
1/09/08	to 30/11/08	7.75	
1/10/08	to 31/12/08	7.82	
1/11/08	to 31/01/09	7.85	
1/12/08	to 28/02/09	5.40	
1/01/09	to 31/03/09	5.48	

# SCOTLAND

## Standing Sales - Average Unit Price

January 2004 to March 2009



NB - When category is not shown - No figures available for period



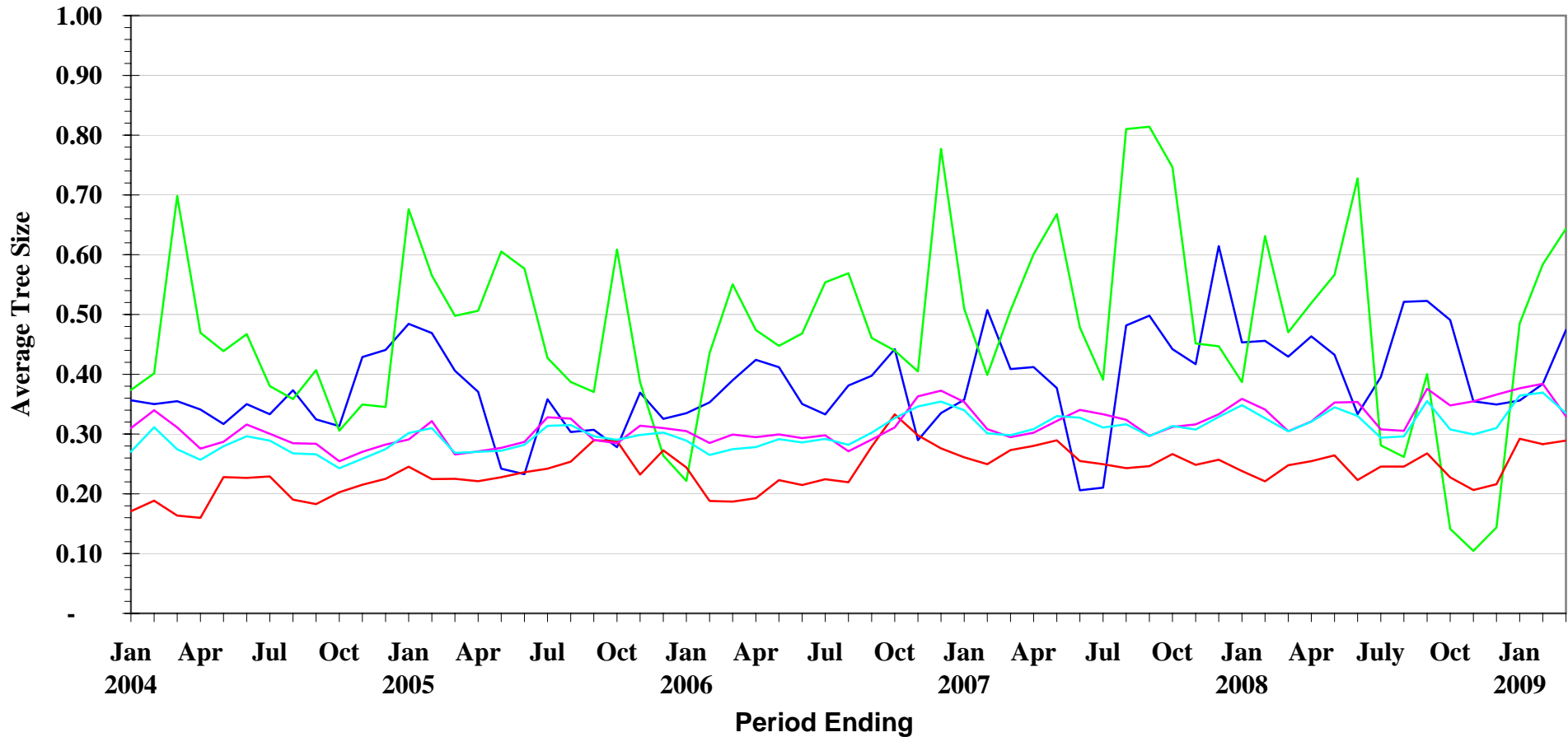
**STANDING SALES - GB AVERAGE TREE SIZE**

			Average Tree Size				Average Tree Size
<b>Thinning (Instalment)</b>	1/01/07	to 31/03/07	0.41	<b>Clearfell (Weight)</b>	1/01/07	to 31/03/07	0.29
	1/02/07	to 30/04/07	0.41		1/02/07	to 30/04/07	0.30
	1/03/07	to 31/05/07	0.38		1/03/07	to 31/05/07	0.32
	1/04/07	to 30/06/07	0.21		1/04/07	to 30/06/07	0.34
	1/05/07	to 31/07/07	0.21		1/05/07	to 31/07/07	0.33
	1/06/07	to 31/08/07	0.48		1/06/07	to 31/08/07	0.32
	1/07/07	to 30/09/07	0.50		1/07/07	to 30/09/07	0.30
	1/08/07	to 31/10/07	0.44		1/08/07	to 31/10/07	0.31
	1/09/07	to 30/11/07	0.42		1/09/07	to 30/11/07	0.32
	1/10/07	to 31/12/07	0.61		1/10/07	to 31/12/07	0.33
	1/11/07	to 31/01/08	0.45		1/11/07	to 31/01/08	0.36
	1/12/07	to 29/02/08	0.46		1/12/07	to 29/02/08	0.34
	1/01/08	to 31/03/08	0.43		1/01/08	to 31/03/08	0.30
	1/02/08	to 30/04/08	0.46		1/02/08	to 30/04/08	0.32
	1/03/08	to 31/05/08	0.43		1/03/08	to 31/05/08	0.35
	1/04/08	to 30/06/08	0.33		1/04/08	to 30/06/08	0.35
	1/05/08	to 31/07/08	0.40		1/05/08	to 31/07/08	0.31
	1/06/08	to 31/08/08	0.52		1/06/08	to 31/08/08	0.31
	1/07/08	to 30/09/08	0.52		1/07/08	to 30/09/08	0.38
	1/08/08	to 31/10/08	0.49		1/08/08	to 31/10/08	0.35
	1/09/08	to 30/11/08	0.35		1/09/08	to 30/11/08	0.35
	1/10/08	to 31/12/08	0.35		1/10/08	to 31/12/08	0.37
	1/11/08	to 31/01/09	0.36		1/11/08	to 31/01/09	0.38
	1/12/08	to 28/02/09	0.38		1/12/08	to 28/02/09	0.38
	1/01/09	to 31/03/09	0.47		1/01/09	to 31/03/09	0.33
			Average Tree Size				Average Tree Size
<b>Clearfell (Instalment)</b>	1/01/07	to 31/03/07	0.51	<b>Summary</b>	1/01/07	to 31/03/07	0.30
	1/02/07	to 30/04/07	0.60		1/02/07	to 30/04/07	0.31
	1/03/07	to 31/05/07	0.67		1/03/07	to 31/05/07	0.33
	1/04/07	to 30/06/07	0.48		1/04/07	to 30/06/07	0.33
	1/05/07	to 31/07/07	0.39		1/05/07	to 31/07/07	0.31
	1/06/07	to 31/08/07	0.20		1/06/07	to 31/08/07	0.31
	1/07/07	to 30/09/07	0.81		1/07/07	to 30/09/07	0.30
	1/08/07	to 31/10/07	0.75		1/08/07	to 31/10/07	0.31
	1/09/07	to 30/11/07	0.45		1/09/07	to 30/11/07	0.31
	1/10/07	to 31/12/07	0.45		1/10/07	to 31/12/07	0.33
	1/11/07	to 31/01/08	0.39		1/11/07	to 31/01/08	0.35
	1/12/07	to 29/02/08	0.63		1/12/07	to 29/02/08	0.33
	1/01/08	to 31/03/08	0.47		1/01/08	to 31/03/08	0.30
	1/02/08	to 30/04/08	0.52		1/02/08	to 30/04/08	0.32
	1/03/08	to 31/05/08	0.57		1/03/08	to 31/05/08	0.34
	1/04/08	to 30/06/08	0.73		1/04/08	to 30/06/08	0.33
	1/05/08	to 31/07/08	0.28		1/05/08	to 31/07/08	0.29
	1/06/08	to 31/08/08	0.26		1/06/08	to 31/08/08	0.30
	1/07/08	to 30/09/08	0.40		1/07/08	to 30/09/08	0.36
	1/08/08	to 31/10/08	0.14		1/08/08	to 31/10/08	0.31
	1/09/08	to 30/11/08	0.10		1/09/08	to 30/11/08	0.30
	1/10/08	to 31/12/08	0.14		1/10/08	to 31/12/08	0.31
	1/11/08	to 31/01/09	0.49		1/11/08	to 31/01/09	0.36
	1/12/08	to 28/02/09	0.58		1/12/08	to 28/02/09	0.37
	1/01/09	to 31/03/09	0.64		1/01/09	to 31/03/09	0.33
			Average Tree Size				Average Tree Size
<b>Thinning (Weight)</b>	1/01/07	to 31/03/07	0.27				
	1/02/07	to 30/04/07	0.28				
	1/03/07	to 31/05/07	0.29				
	1/04/07	to 30/06/07	0.25				
	1/05/07	to 31/07/07	0.25				
	1/06/07	to 31/08/07	0.24				
	1/07/07	to 30/09/07	0.25				
	1/08/07	to 31/10/07	0.27				
	1/09/07	to 30/11/07	0.25				
	1/10/07	to 31/12/07	0.26				
	1/11/07	to 31/01/08	0.24				
	1/12/07	to 29/02/08	0.22				
	1/01/08	to 31/03/08	0.25				
	1/02/08	to 30/04/08	0.25				
	1/03/08	to 31/05/08	0.26				
	1/04/08	to 30/06/08	0.22				
	1/05/08	to 31/07/08	0.25				
	1/06/08	to 31/08/08	0.25				
	1/07/08	to 30/09/08	0.27				
	1/08/08	to 31/10/08	0.23				
	1/09/08	to 30/11/08	0.21				
	1/10/08	to 31/12/08	0.22				
	1/11/08	to 31/01/09	0.29				
	1/12/08	to 28/02/09	0.28				
	1/01/09	to 31/03/09	0.29				

GB

# Standing Sales - Average Tree Sizes

January 2004 to March 2009



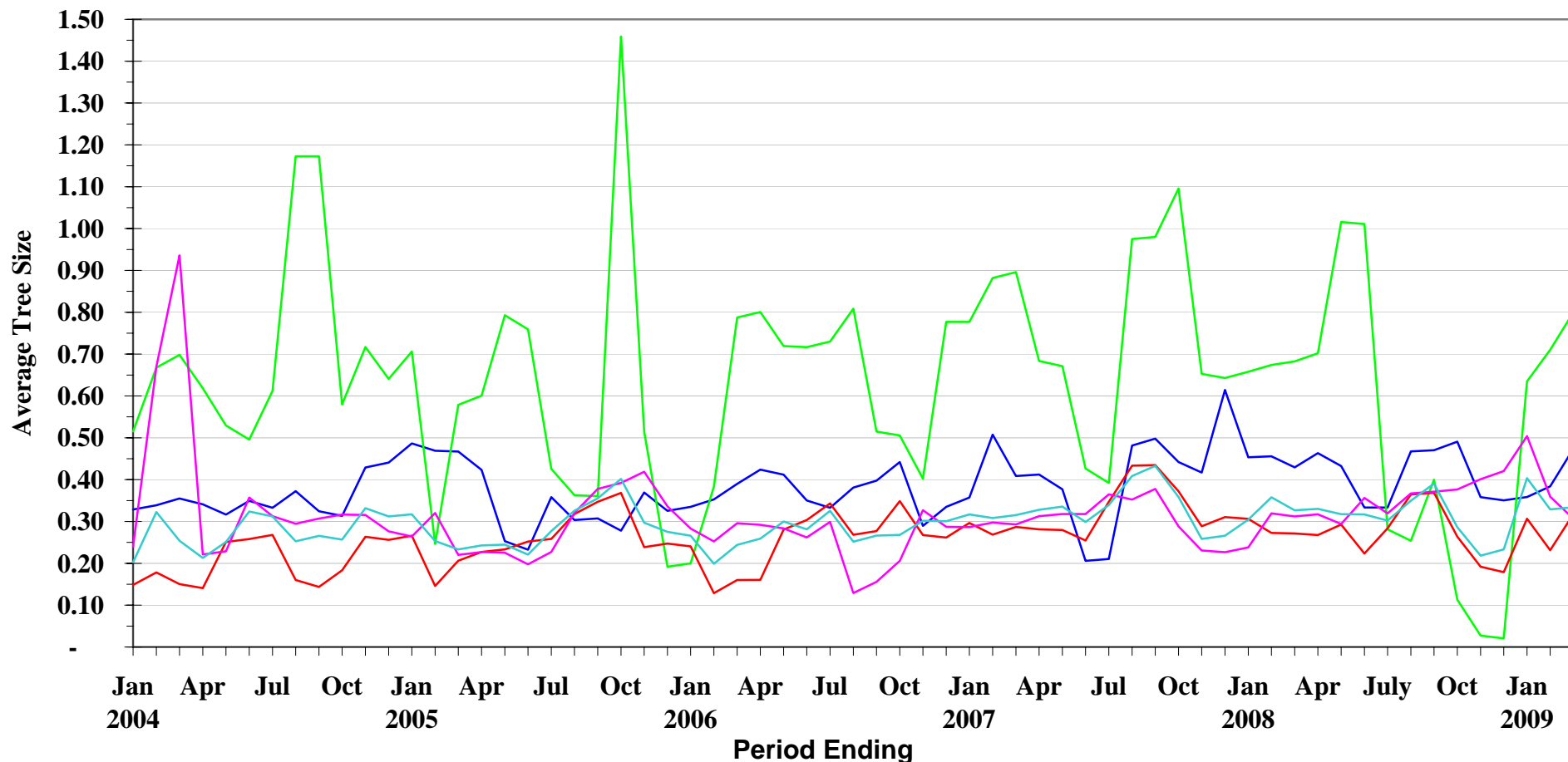
— Thinning (Instalment) — Clearfell (Instalment) — Thinning (Weight) — Clearfell (Weight) — Summary

NB - When category is not shown - No figures available for period

**ENGLAND**

# Standing Sales - Average Tree Sizes

January 2004 to March 2009



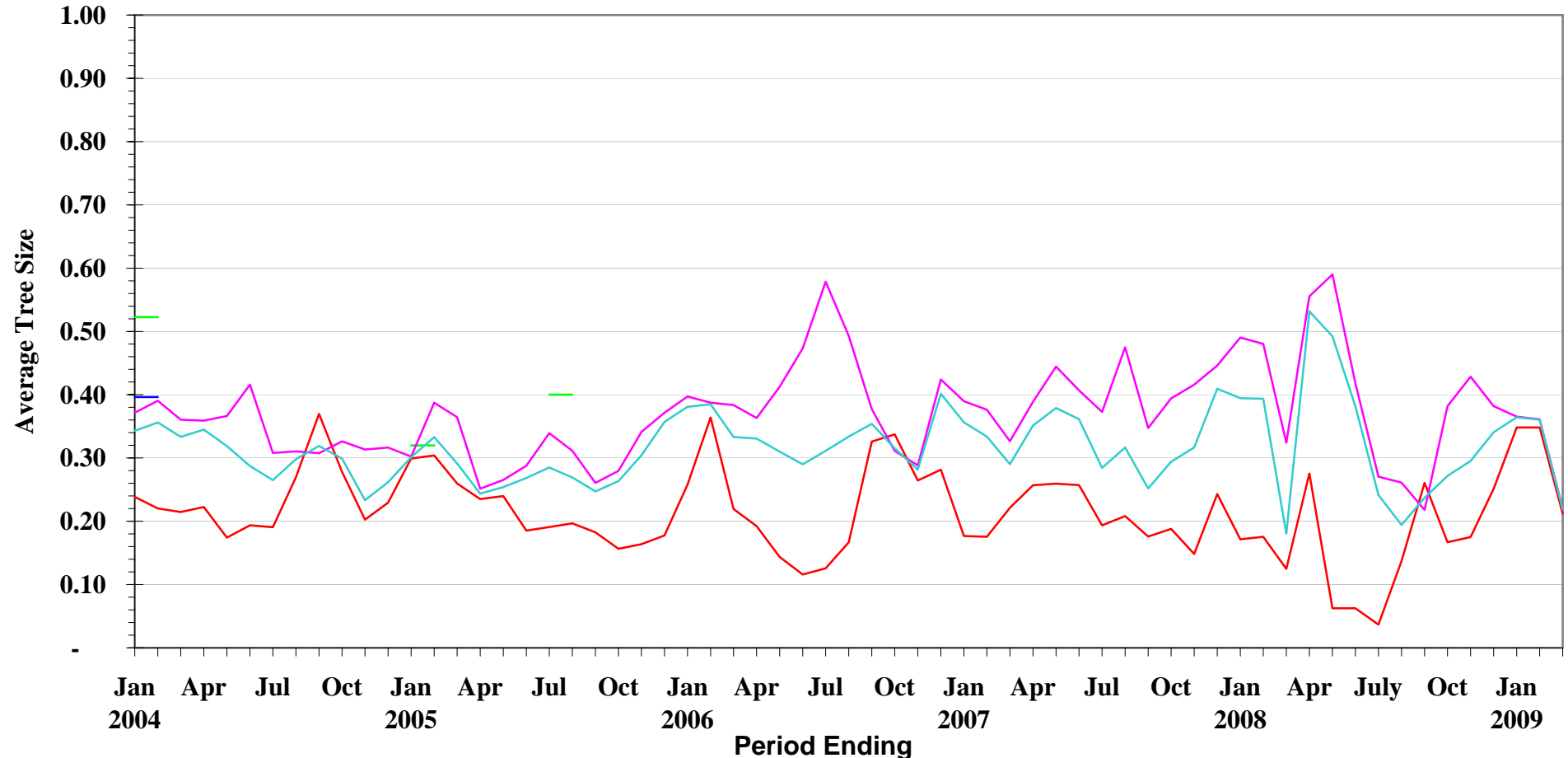
— Thinning (Instalment) — Clearfell (Instalment) — Thinning (Weight) — Clearfell (Weight) — Summary

NB - When category is not shown - No figures available for period

**WALES**

# Standing Sales - Average Tree Sizes

January 2004 to March 2009



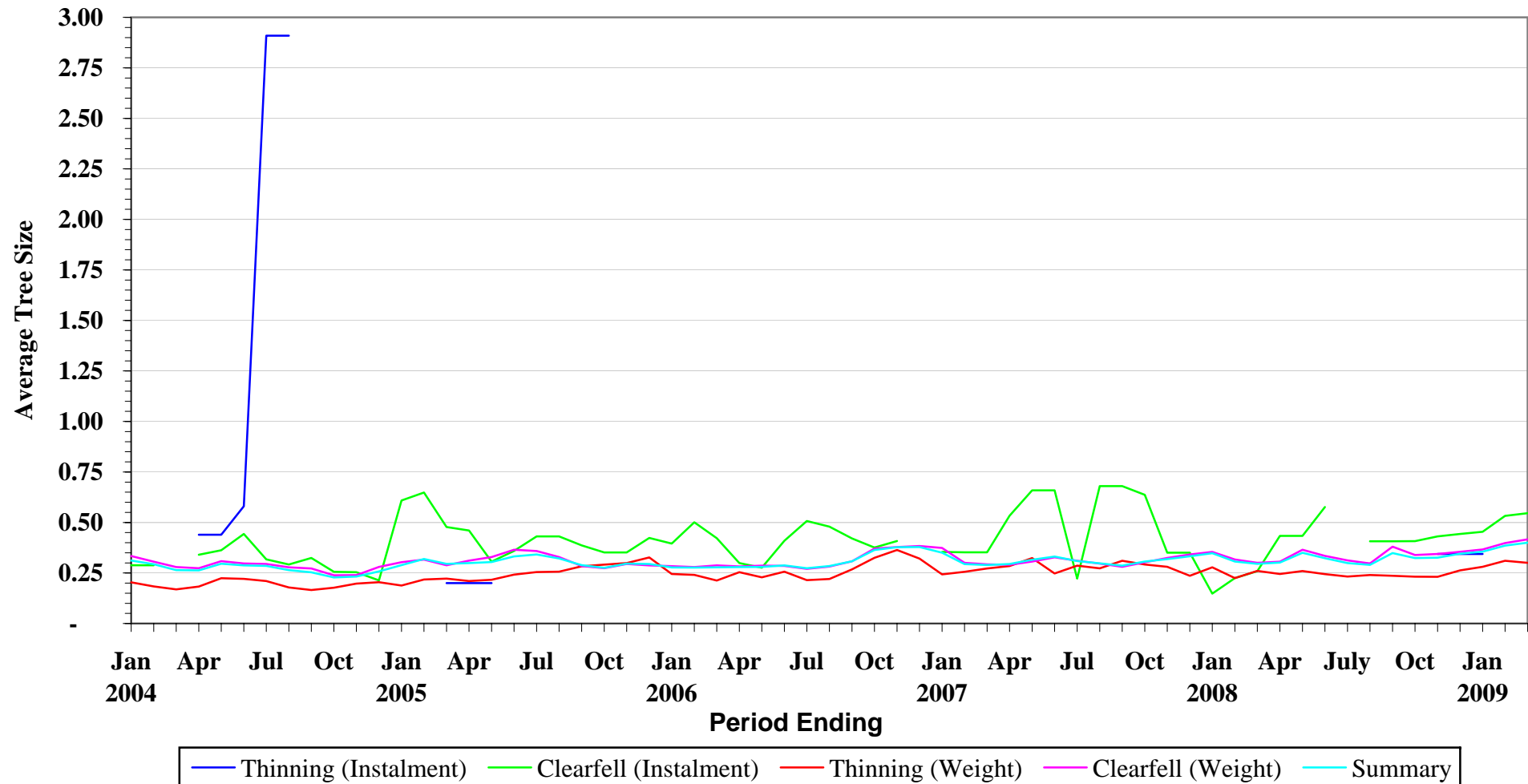
— Thinning (Instalment) — Clearfell (Instalment) — Thinning (Weight) — Clearfell (Weight) — Summary

NB - When category is not shown - No figures available for period

# SCOTLAND

## Standing Sales - Average Tree Sizes

January 2004 to March 2009



NB - When category is not shown - No figures available for period