

Direct Production - GB Average Unit Prices

Green		Unit Price
1/06/07	to 31/08/07	37.61
1/07/07	to 30/09/07	38.84
1/08/07	to 31/10/07	39.49
1/09/07	to 30/11/07	39.47
1/10/07	to 31/12/07	38.27
1/11/07	to 31/01/08	37.25
1/12/07	to 29/02/08	36.89
1/01/08	to 31/03/08	37.75
1/02/08	to 30/04/08	38.52
1/03/08	to 31/05/08	37.91
1/04/08	to 30/06/08	37.77
1/05/08	to 31/07/08	37.96
1/06/08	to 31/08/08	36.78
1/07/08	to 30/09/08	34.46
1/08/08	to 31/10/08	32.98
1/09/08	to 30/11/08	32.13
1/10/08	to 31/12/08	32.15
1/11/08	to 31/01/09	29.78
1/12/08	to 28/02/09	28.55
1/01/09	to 31/03/09	28.60
1/02/09	to 30/04/09	28.26
1/03/09	to 31/05/09	28.29
1/04/09	to 30/06/09	28.44
1/05/09	to 31/07/09	29.59
1/06/09	to 31/08/09	29.56

Short Green A		Unit Price
1/06/07	to 31/08/07	33.60
1/07/07	to 30/09/07	35.33
1/08/07	to 31/10/07	37.78
1/09/07	to 30/11/07	38.61
1/10/07	to 31/12/07	35.74
1/11/07	to 31/01/08	31.37
1/12/07	to 29/02/08	28.39
1/01/08	to 31/03/08	33.01
1/02/08	to 30/04/08	28.81
1/03/08	to 31/05/08	29.31
1/04/08	to 30/06/08	29.38
1/05/08	to 31/07/08	30.86
1/06/08	to 31/08/08	29.97
1/07/08	to 30/09/08	29.50
1/08/08	to 31/10/08	27.44
1/09/08	to 30/11/08	25.97
1/10/08	to 31/12/08	25.73
1/11/08	to 31/01/09	23.83
1/12/08	to 28/02/09	23.59
1/01/09	to 31/03/09	22.19
1/02/09	to 30/04/09	22.49
1/03/09	to 31/05/09	23.09
1/04/09	to 30/06/09	23.25
1/05/09	to 31/07/09	23.67
1/06/09	to 31/08/09	24.99

Red		Unit Price
1/06/07	to 31/08/07	32.64
1/07/07	to 30/09/07	35.42
1/08/07	to 31/10/07	32.94
1/09/07	to 30/11/07	34.57
1/10/07	to 31/12/07	34.31
1/11/07	to 31/01/08	31.85
1/12/07	to 29/02/08	32.12
1/01/08	to 31/03/08	31.67
1/02/08	to 30/04/08	28.89
1/03/08	to 31/05/08	27.62
1/04/08	to 30/06/08	27.90
1/05/08	to 31/07/08	29.92
1/06/08	to 31/08/08	31.11
1/07/08	to 30/09/08	30.37
1/08/08	to 31/10/08	29.59
1/09/08	to 30/11/08	27.54
1/10/08	to 31/12/08	28.23
1/11/08	to 31/01/09	27.72
1/12/08	to 28/02/09	27.66
1/01/09	to 31/03/09	27.30
1/02/09	to 30/04/09	24.04
1/03/09	to 31/05/09	24.05
1/04/09	to 30/06/09	25.21
1/05/09	to 31/07/09	27.49
1/06/09	to 31/08/09	27.88

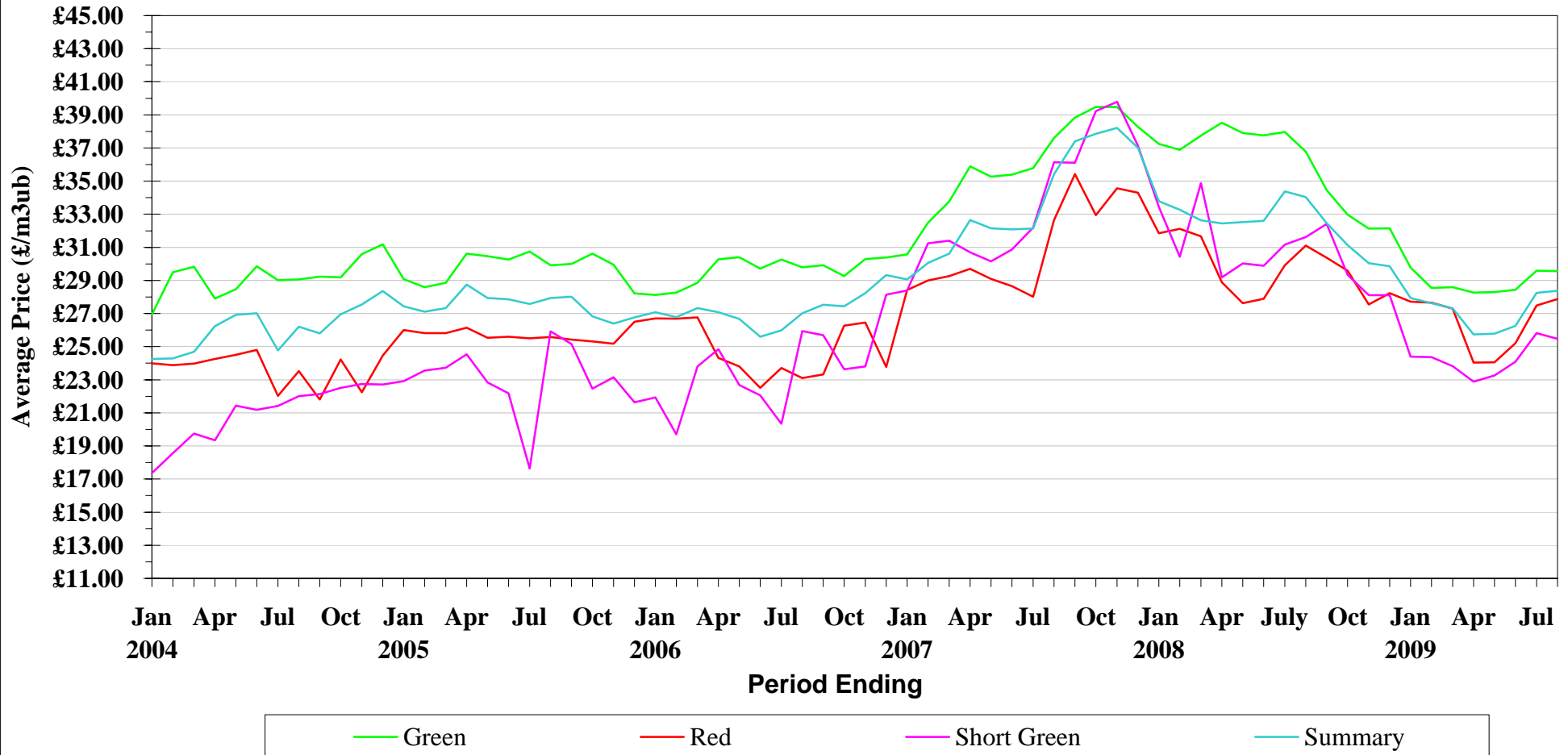
Short Green B		Unit Price
1/06/07	to 31/08/07	47.41
1/07/07	to 30/09/07	44.20
1/08/07	to 31/10/07	43.90
1/09/07	to 30/11/07	43.79
1/10/07	to 31/12/07	38.77
1/11/07	to 31/01/08	39.67
1/12/07	to 29/02/08	36.14
1/01/08	to 31/03/08	42.50
1/02/08	to 30/04/08	37.86
1/03/08	to 31/05/08	38.46
1/04/08	to 30/06/08	37.29
1/05/08	to 31/07/08	36.17
1/06/08	to 31/08/08	35.51
1/07/08	to 30/09/08	36.70
1/08/08	to 31/10/08	30.79
1/09/08	to 30/11/08	30.15
1/10/08	to 31/12/08	30.13
1/11/08	to 31/01/09	34.38
1/12/08	to 28/02/09	27.25
1/01/09	to 31/03/09	27.21
1/02/09	to 30/04/09	27.08
1/03/09	to 31/05/09	30.95
1/04/09	to 30/06/09	28.52
1/05/09	to 31/07/09	28.54
1/06/09	to 31/08/09	27.46

Summary for All		Unit Price
1/06/07	to 31/08/07	35.42
1/07/07	to 30/09/07	37.41
1/08/07	to 31/10/07	37.86
1/09/07	to 30/11/07	38.21
1/10/07	to 31/12/07	37.02
1/11/07	to 31/01/08	33.79
1/12/07	to 29/02/08	33.27
1/01/08	to 31/03/08	32.63
1/02/08	to 30/04/08	32.44
1/03/08	to 31/05/08	32.53
1/04/08	to 30/06/08	32.60
1/05/08	to 31/07/08	34.38
1/06/08	to 31/08/08	34.04
1/07/08	to 30/09/08	32.46
1/08/08	to 31/10/08	31.13
1/09/08	to 30/11/08	30.04
1/10/08	to 31/12/08	29.85
1/11/08	to 31/01/09	27.94
1/12/08	to 28/02/09	27.63
1/01/09	to 31/03/09	27.32
1/02/09	to 30/04/09	25.74
1/03/09	to 31/05/09	25.78
1/04/09	to 30/06/09	26.25
1/05/09	to 31/07/09	28.25
1/06/09	to 31/08/09	28.38

GB

Direct Production - Average Unit Prices

January 2004 to August 2009



NB - When category is not shown - No figures available for period

Direct Production - ENGLAND Average Unit Prices

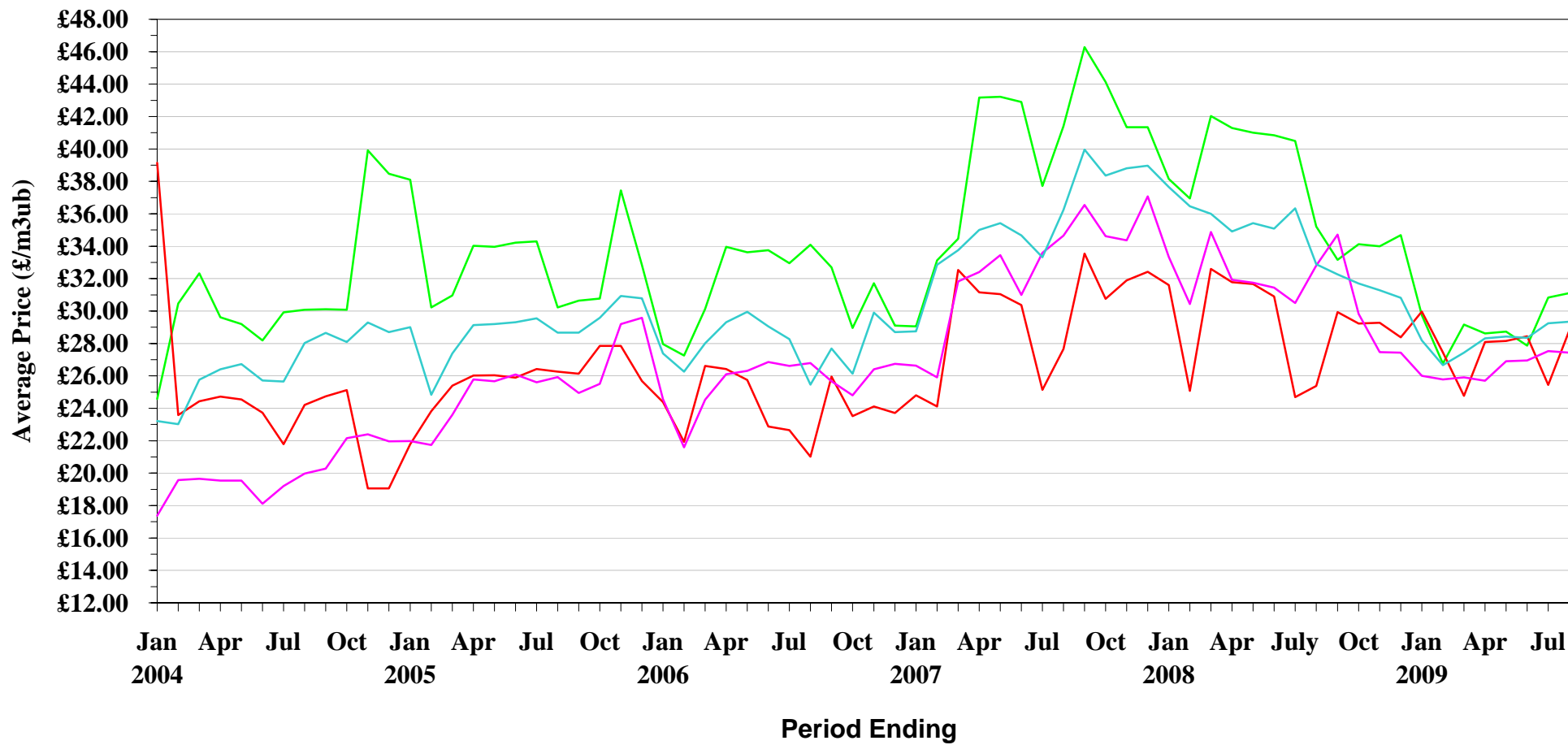
Green			Unit Price	Short Green			Unit Price
1/06/07	to	31/08/07	41.40	1/06/07	to	31/08/07	34.65
1/07/07	to	30/09/07	46.29	1/07/07	to	30/09/07	36.55
1/08/07	to	31/10/07	44.14	1/08/07	to	31/10/07	34.63
1/09/07	to	30/11/07	41.34	1/09/07	to	30/11/07	34.36
1/10/07	to	31/12/07	41.34	1/10/07	to	31/12/07	37.07
1/11/07	to	31/01/08	38.15	1/11/07	to	31/01/08	33.34
1/12/07	to	29/02/08	36.95	1/12/07	to	29/02/08	30.43
1/01/08	to	31/03/08	42.03	1/01/08	to	31/03/08	34.87
1/02/08	to	30/04/08	41.29	1/02/08	to	30/04/08	31.93
1/03/08	to	31/05/08	41.00	1/03/08	to	31/05/08	31.74
1/04/08	to	30/06/08	40.84	1/04/08	to	30/06/08	31.44
1/05/08	to	31/07/08	40.49	1/05/08	to	31/07/08	30.49
1/06/08	to	31/08/08	35.21	1/06/08	to	31/08/08	32.80
1/07/08	to	30/09/08	33.16	1/07/08	to	30/09/08	34.72
1/08/08	to	31/10/08	34.12	1/08/08	to	31/10/08	29.83
1/09/08	to	30/11/08	34.00	1/09/08	to	30/11/08	27.46
1/10/08	to	31/12/08	34.68	1/10/08	to	31/12/08	27.43
1/11/08	to	31/01/09	29.74	1/11/08	to	31/01/09	26.00
1/12/08	to	28/02/09	26.75	1/12/08	to	28/02/09	25.78
1/01/09	to	31/03/09	29.16	1/01/09	to	31/03/09	25.91
1/02/09	to	30/04/09	28.62	1/02/09	to	30/04/09	25.71
1/03/09	to	31/05/09	28.73	1/03/09	to	31/05/09	26.90
1/04/09	to	30/06/09	27.87	1/04/09	to	30/06/09	26.95
1/05/09	to	31/07/09	30.83	1/05/09	to	31/07/09	27.54
1/06/09	to	31/08/09	31.11	1/06/09	to	31/08/09	27.43

Red			Unit Price	Summary for All			Unit Price
1/06/07	to	31/08/07	27.66	1/06/07	to	31/08/07	36.25
1/07/07	to	30/09/07	33.55	1/07/07	to	30/09/07	39.96
1/08/07	to	31/10/07	30.75	1/08/07	to	31/10/07	38.36
1/09/07	to	30/11/07	31.89	1/09/07	to	30/11/07	38.80
1/10/07	to	31/12/07	32.42	1/10/07	to	31/12/07	38.97
1/11/07	to	31/01/08	31.61	1/11/07	to	31/01/08	37.65
1/12/07	to	29/02/08	25.07	1/12/07	to	29/02/08	36.47
1/01/08	to	31/03/08	32.60	1/01/08	to	31/03/08	36.00
1/02/08	to	30/04/08	31.78	1/02/08	to	30/04/08	34.90
1/03/08	to	31/05/08	31.68	1/03/08	to	31/05/08	35.42
1/04/08	to	30/06/08	30.90	1/04/08	to	30/06/08	35.08
1/05/08	to	31/07/08	24.70	1/05/08	to	31/07/08	36.34
1/06/08	to	31/08/08	25.39	1/06/08	to	31/08/08	32.88
1/07/08	to	30/09/08	29.93	1/07/08	to	30/09/08	32.25
1/08/08	to	31/10/08	29.24	1/08/08	to	31/10/08	31.70
1/09/08	to	30/11/08	29.28	1/09/08	to	30/11/08	31.29
1/10/08	to	31/12/08	28.37	1/10/08	to	31/12/08	30.81
1/11/08	to	31/01/09	29.96	1/11/08	to	31/01/09	28.19
1/12/08	to	28/02/09	27.45	1/12/08	to	28/02/09	26.66
1/01/09	to	31/03/09	24.77	1/01/09	to	31/03/09	27.44
1/02/09	to	30/04/09	28.10	1/02/09	to	30/04/09	28.32
1/03/09	to	31/05/09	28.15	1/03/09	to	31/05/09	28.43
1/04/09	to	30/06/09	28.44	1/04/09	to	30/06/09	28.35
1/05/09	to	31/07/09	25.44	1/05/09	to	31/07/09	29.24
1/06/09	to	31/08/09	28.79	1/06/09	to	31/08/09	29.34

ENGLAND

Direct Production - Average Unit Prices

January 2004 to August 2009



Green Red Short Green Summary

NB - When category is not shown - No figures available for period

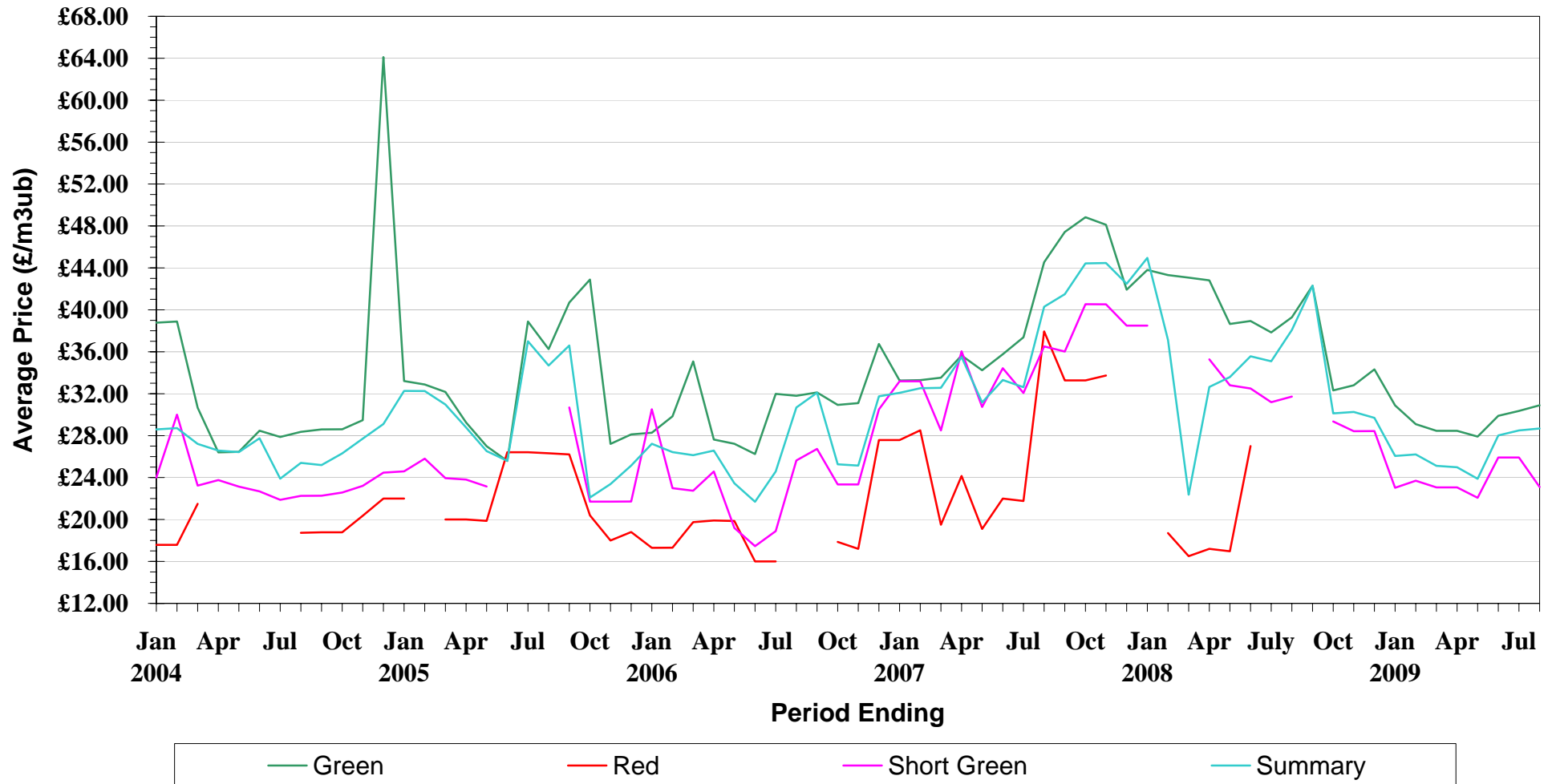
Direct Production - WALES Average Unit Prices

		Unit Price				Unit Price			
Green	1/06/07	to	31/08/07	44.54	Short Green	1/06/07	to	31/08/07	36.51
	1/07/07	to	30/09/07	47.43		1/07/07	to	30/09/07	36.03
	1/08/07	to	31/10/07	48.84		1/08/07	to	31/10/07	40.53
	1/09/07	to	30/11/07	48.11		1/09/07	to	30/11/07	40.52
	1/10/07	to	31/12/07	41.92		1/10/07	to	31/12/07	
	1/11/07	to	31/01/08	43.80		1/11/07	to	31/01/08	
	1/12/07	to	29/02/08	43.32		1/12/07	to	29/02/08	
	1/01/08	to	31/03/08	43.08		1/01/08	to	31/03/08	
	1/02/08	to	30/04/08	42.81		1/02/08	to	30/04/08	35.28
	1/03/08	to	31/05/08	38.66		1/03/08	to	31/05/08	32.80
	1/04/08	to	30/06/08	38.93		1/04/08	to	30/06/08	32.50
	1/05/08	to	31/07/08	37.84		1/05/08	to	31/07/08	31.19
	1/06/08	to	31/08/08	39.30		1/06/08	to	31/08/08	31.72
	1/07/08	to	30/09/08	42.30		1/07/08	to	30/09/08	
	1/08/08	to	31/10/08	32.32		1/08/08	to	31/10/08	29.36
	1/09/08	to	30/11/08	32.80		1/09/08	to	30/11/08	28.43
	1/10/08	to	31/12/08	34.32		1/10/08	to	31/12/08	28.43
	1/11/08	to	31/01/09	30.88		1/11/08	to	31/01/09	23.03
	1/12/08	to	28/02/09	29.09		1/12/08	to	28/02/09	23.70
	1/01/09	to	31/03/09	28.46		1/01/09	to	31/03/09	23.06
	1/02/09	to	30/04/09	28.46		1/02/09	to	30/04/09	23.06
	1/03/09	to	31/05/09	27.91		1/03/09	to	31/05/09	22.07
	1/04/09	to	30/06/09	29.89		1/04/09	to	30/06/09	25.92
	1/05/09	to	31/07/09	30.36		1/05/09	to	31/07/09	25.92
1/06/09	to	31/08/09	30.89	1/06/09	to	31/08/09	23.10		
				Unit Price					
Red	1/06/07	to	31/08/07	37.94	Summary for All	1/06/07	to	31/08/07	40.29
	1/07/07	to	30/09/07	33.27		1/07/07	to	30/09/07	41.49
	1/08/07	to	31/10/07	33.27		1/08/07	to	31/10/07	44.43
	1/09/07	to	30/11/07	33.73		1/09/07	to	30/11/07	44.46
	1/10/07	to	31/12/07			1/10/07	to	31/12/07	41.86
	1/11/07	to	31/01/08			1/11/07	to	31/01/08	44.96
	1/12/07	to	29/02/08			1/12/07	to	29/02/08	37.13
	1/01/08	to	31/03/08	16.50		1/01/08	to	31/03/08	22.37
	1/02/08	to	30/04/08	17.20		1/02/08	to	30/04/08	32.65
	1/03/08	to	31/05/08	16.96		1/03/08	to	31/05/08	33.59
	1/04/08	to	30/06/08	27.00		1/04/08	to	30/06/08	35.57
	1/05/08	to	31/07/08			1/05/08	to	31/07/08	35.10
	1/06/08	to	31/08/08			1/06/08	to	31/08/08	38.08
	1/07/08	to	30/09/08			1/07/08	to	30/09/08	42.30
	1/08/08	to	31/10/08			1/08/08	to	31/10/08	30.13
	1/09/08	to	30/11/08			1/09/08	to	30/11/08	30.26
	1/10/08	to	31/12/08			1/10/08	to	31/12/08	29.70
	1/11/08	to	31/01/09			1/11/08	to	31/01/09	26.07
	1/12/08	to	28/02/09			1/12/08	to	28/02/09	26.21
	1/01/09	to	31/03/09			1/01/09	to	31/03/09	25.12
	1/02/09	to	30/04/09			1/02/09	to	30/04/09	24.99
	1/03/09	to	31/05/09			1/03/09	to	31/05/09	23.88
	1/04/09	to	30/06/09			1/04/09	to	30/06/09	28.02
	1/05/09	to	31/07/09			1/05/09	to	31/07/09	28.50
1/06/09	to	31/08/09		1/06/09	to	31/08/09	28.68		

WALES

Direct Production - Average Unit Prices

January 2004 to August 2009



NB - When category is not shown - No figures available for period

Direct Production - SCOTLAND Average Unit Prices

Green			Unit Price
1/06/07	to	31/08/07	33.63
1/07/07	to	30/09/07	34.55
1/08/07	to	31/10/07	34.28
1/09/07	to	30/11/07	35.46
1/10/07	to	31/12/07	36.06
1/11/07	to	31/01/08	35.68
1/12/07	to	29/02/08	35.66
1/01/08	to	31/03/08	35.99
1/02/08	to	30/04/08	36.78
1/03/08	to	31/05/08	35.88
1/04/08	to	30/06/08	35.76
1/05/08	to	31/07/08	34.98
1/06/08	to	31/08/08	33.96
1/07/08	to	30/09/08	33.19
1/08/08	to	31/10/08	32.43
1/09/08	to	30/11/08	30.70
1/10/08	to	31/12/08	30.36
1/11/08	to	31/01/09	29.63
1/12/08	to	28/02/09	28.55
1/01/09	to	31/03/09	28.51
1/02/09	to	30/04/09	28.07
1/03/09	to	31/05/09	28.12
1/04/09	to	30/06/09	28.06
1/05/09	to	31/07/09	28.20
1/06/09	to	31/08/09	28.48

Short Green			Unit Price
1/06/07	to	31/08/07	
1/07/07	to	30/09/07	
1/08/07	to	31/10/07	
1/09/07	to	30/11/07	
1/10/07	to	31/12/07	
1/11/07	to	31/01/08	
1/12/07	to	29/02/08	
1/01/08	to	31/03/08	
1/02/08	to	30/04/08	
1/03/08	to	31/05/08	
1/04/08	to	30/06/08	
1/05/08	to	31/07/08	
1/06/08	to	31/08/08	
1/07/08	to	30/09/08	
1/08/08	to	31/10/08	
1/09/08	to	30/11/08	
1/10/08	to	31/12/08	
1/11/08	to	31/01/09	
1/12/08	to	28/02/09	
1/01/09	to	31/03/09	
1/02/09	to	30/04/09	
1/03/09	to	31/05/09	
1/04/09	to	30/06/09	
1/05/09	to	31/07/09	
1/06/09	to	31/08/09	

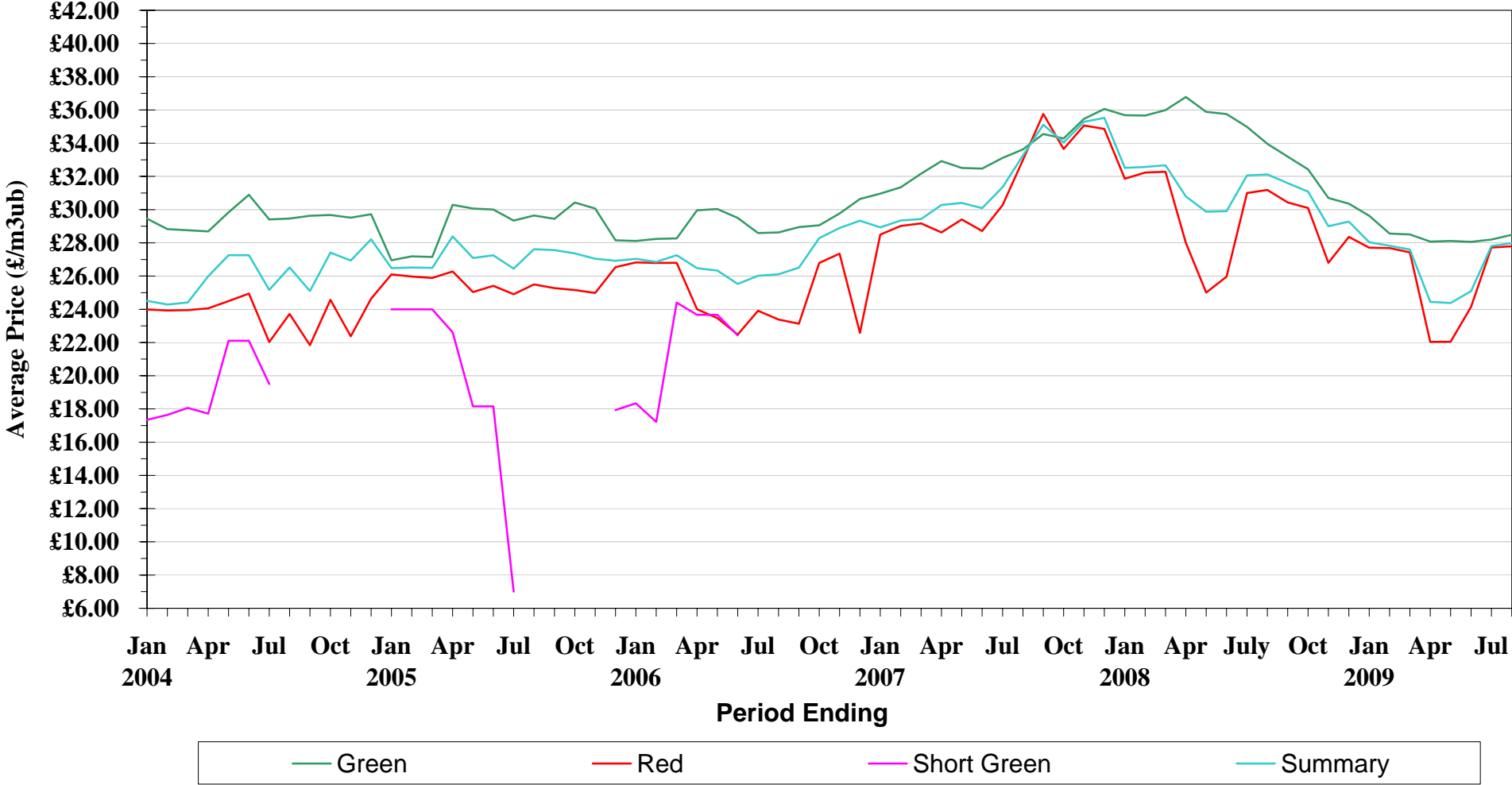
Red			Unit Price
1/06/07	to	31/08/07	32.99
1/07/07	to	30/09/07	35.76
1/08/07	to	31/10/07	33.65
1/09/07	to	30/11/07	35.06
1/10/07	to	31/12/07	34.85
1/11/07	to	31/01/08	31.86
1/12/07	to	29/02/08	32.23
1/01/08	to	31/03/08	32.27
1/02/08	to	30/04/08	28.00
1/03/08	to	31/05/08	25.00
1/04/08	to	30/06/08	25.96
1/05/08	to	31/07/08	31.00
1/06/08	to	31/08/08	31.18
1/07/08	to	30/09/08	30.43
1/08/08	to	31/10/08	30.10
1/09/08	to	30/11/08	26.79
1/10/08	to	31/12/08	28.36
1/11/08	to	31/01/09	27.71
1/12/08	to	28/02/09	27.69
1/01/09	to	31/03/09	27.43
1/02/09	to	30/04/09	22.04
1/03/09	to	31/05/09	22.04
1/04/09	to	30/06/09	24.15
1/05/09	to	31/07/09	27.71
1/06/09	to	31/08/09	27.80

Summary for All			Unit Price
1/06/07	to	31/08/07	33.26
1/07/07	to	30/09/07	35.11
1/08/07	to	31/10/07	34.04
1/09/07	to	30/11/07	35.29
1/10/07	to	31/12/07	35.52
1/11/07	to	31/01/08	32.52
1/12/07	to	29/02/08	32.57
1/01/08	to	31/03/08	32.67
1/02/08	to	30/04/08	30.80
1/03/08	to	31/05/08	29.88
1/04/08	to	30/06/08	29.91
1/05/08	to	31/07/08	32.06
1/06/08	to	31/08/08	32.12
1/07/08	to	30/09/08	31.60
1/08/08	to	31/10/08	31.08
1/09/08	to	30/11/08	29.00
1/10/08	to	31/12/08	29.28
1/11/08	to	31/01/09	28.04
1/12/08	to	28/02/09	27.83
1/01/09	to	31/03/09	27.60
1/02/09	to	30/04/09	25.04
1/03/09	to	31/05/09	24.96
1/04/09	to	30/06/09	25.09
1/05/09	to	31/07/09	27.81
1/06/09	to	31/08/09	27.98

SCOTLAND

Direct Production - Average Unit Prices

January 2004 to August 2009



NB - When category is not shown - No figures available for period

STANDING SALES - GB AVERAGE UNIT PRICES

			Unit Price (£/m3obs)				Unit Price (£/tonne)
Thinning (Instalment)	1/06/07	to 31/08/07	19.09	Clearfell (Weight)	1/06/07	to 31/08/07	13.42
	1/07/07	to 30/09/07	19.61		1/07/07	to 30/09/07	14.77
	1/08/07	to 31/10/07	18.39		1/08/07	to 31/10/07	16.07
	1/09/07	to 30/11/07	7.82		1/09/07	to 30/11/07	16.54
	1/10/07	to 31/12/07	18.48		1/10/07	to 31/12/07	14.72
	1/11/07	to 31/01/08	15.20		1/11/07	to 31/01/08	15.03
	1/12/07	to 29/02/08	14.00		1/12/07	to 29/02/08	14.26
	1/01/08	to 31/03/08	18.66		1/01/08	to 31/03/08	14.66
	1/02/08	to 30/04/08	18.51		1/02/08	to 30/04/08	15.48
	1/03/08	to 31/05/08	17.82		1/03/08	to 31/05/08	15.68
	1/04/08	to 30/06/08	17.12		1/04/08	to 30/06/08	14.53
	1/05/08	to 31/07/08	12.78		1/05/08	to 31/07/08	10.79
	1/06/08	to 31/08/08	11.44		1/06/08	to 31/08/08	9.48
	1/07/08	to 30/09/08	11.35		1/07/08	to 30/09/08	9.94
	1/08/08	to 31/10/08	12.27		1/08/08	to 31/10/08	9.28
	1/09/08	to 30/11/08	9.95		1/09/08	to 30/11/08	9.16
	1/10/08	to 31/12/08	11.96		1/10/08	to 31/12/08	8.44
	1/11/08	to 31/01/09	12.82		1/11/08	to 31/01/09	8.91
	1/12/08	to 28/02/09	10.41		1/12/08	to 28/02/09	8.68
	1/01/09	to 31/03/09	11.02		1/01/09	to 31/03/09	10.72
1/02/09	to 30/04/09	9.50	1/02/09	to 30/04/09	10.38		
1/03/09	to 31/05/09	10.21	1/03/09	to 31/05/09	9.72		
1/04/09	to 30/06/09	10.67	1/04/09	to 30/06/09	9.27		
1/05/09	to 31/07/09	11.44	1/05/09	to 31/07/09	8.90		
1/06/09	to 31/08/09	14.19	1/06/09	to 31/08/09	9.82		

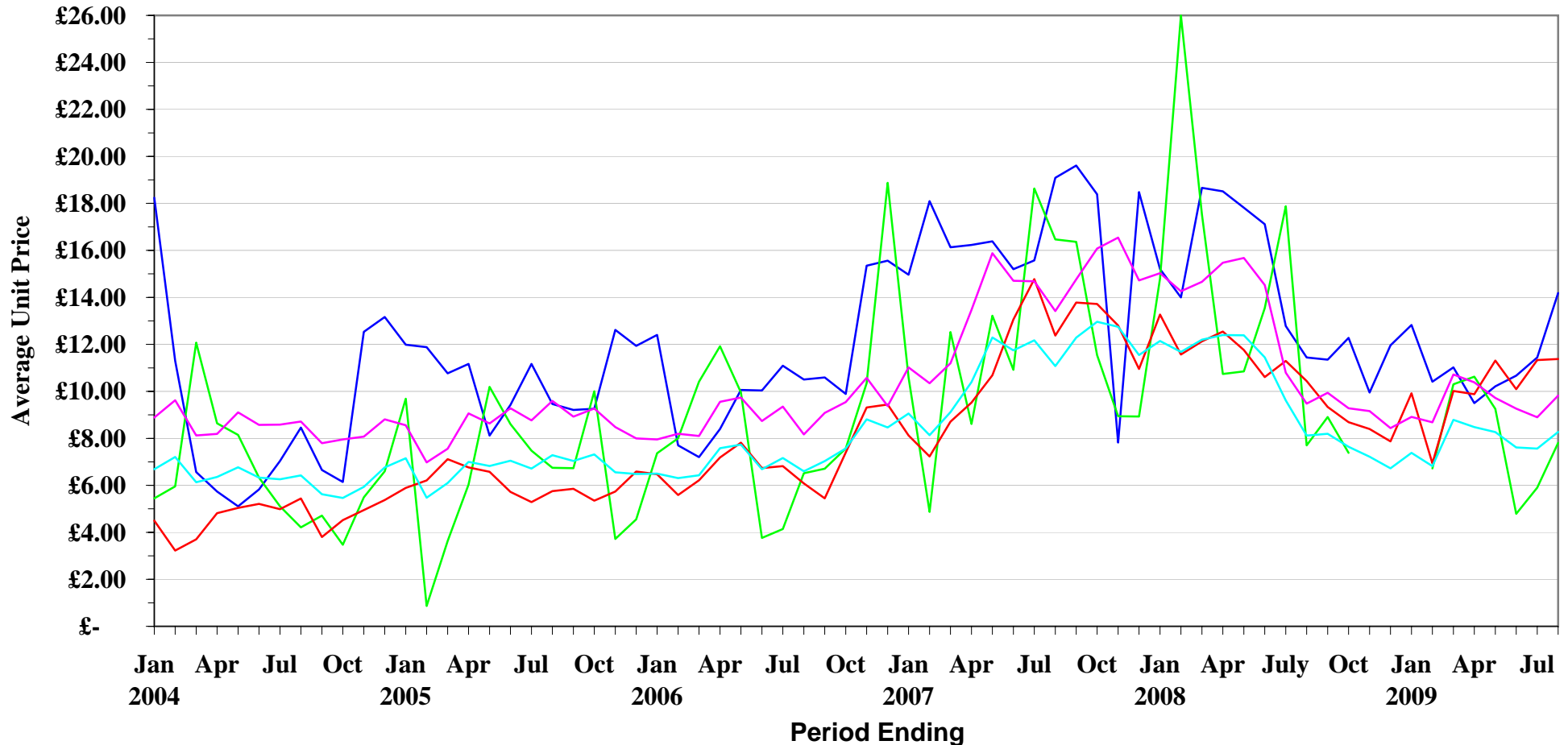
			Unit Price (£/m3obs)				Unit Price (£/m3obs)
Clearfell (Instalment)	1/06/07	to 31/08/07	16.47	Summary	1/06/07	to 31/08/07	11.08
	1/07/07	to 30/09/07	16.36		1/07/07	to 30/09/07	12.29
	1/08/07	to 31/10/07	11.54		1/08/07	to 31/10/07	12.96
	1/09/07	to 30/11/07	8.94		1/09/07	to 30/11/07	12.75
	1/10/07	to 31/12/07	8.93		1/10/07	to 31/12/07	11.55
	1/11/07	to 31/01/08	14.80		1/11/07	to 31/01/08	12.15
	1/12/07	to 29/02/08	26.00		1/12/07	to 29/02/08	11.68
	1/01/08	to 31/03/08	17.53		1/01/08	to 31/03/08	12.18
	1/02/08	to 30/04/08	10.74		1/02/08	to 30/04/08	12.40
	1/03/08	to 31/05/08	10.85		1/03/08	to 31/05/08	12.39
	1/04/08	to 30/06/08	13.54		1/04/08	to 30/06/08	11.45
	1/05/08	to 31/07/08	17.88		1/05/08	to 31/07/08	9.62
	1/06/08	to 31/08/08	7.70		1/06/08	to 31/08/08	8.12
	1/07/08	to 30/09/08	8.91		1/07/08	to 30/09/08	8.19
	1/08/08	to 31/10/08	7.38		1/08/08	to 31/10/08	7.64
	1/09/08	to 30/11/08			1/09/08	to 30/11/08	7.22
	1/10/08	to 31/12/08			1/10/08	to 31/12/08	6.72
	1/11/08	to 31/01/09			1/11/08	to 31/01/09	7.38
	1/12/08	to 28/02/09	6.72		1/12/08	to 28/02/09	6.82
	1/01/09	to 31/03/09	10.30		1/01/09	to 31/03/09	8.79
1/02/09	to 30/04/09	10.63	1/02/09	to 30/04/09	8.48		
1/03/09	to 31/05/09	9.25	1/03/09	to 31/05/09	8.26		
1/04/09	to 30/06/09	4.79	1/04/09	to 30/06/09	7.61		
1/05/09	to 31/07/09	5.90	1/05/09	to 31/07/09	7.56		
1/06/09	to 31/08/09	7.81	1/06/09	to 31/08/09	8.27		

			Unit Price (£/tonne)
Thinning (Weight)	1/06/07	to 31/08/07	12.38
	1/07/07	to 30/09/07	13.78
	1/08/07	to 31/10/07	13.72
	1/09/07	to 30/11/07	12.80
	1/10/07	to 31/12/07	10.95
	1/11/07	to 31/01/08	13.27
	1/12/07	to 29/02/08	11.57
	1/01/08	to 31/03/08	11.92
	1/02/08	to 30/04/08	12.55
	1/03/08	to 31/05/08	11.76
	1/04/08	to 30/06/08	10.61
	1/05/08	to 31/07/08	11.29
	1/06/08	to 31/08/08	10.44
	1/07/08	to 30/09/08	9.34
	1/08/08	to 31/10/08	8.69
	1/09/08	to 30/11/08	8.40
	1/10/08	to 31/12/08	7.87
	1/11/08	to 31/01/09	9.92
	1/12/08	to 28/02/09	6.94
	1/01/09	to 31/03/09	10.01
1/02/09	to 30/04/09	9.88	
1/03/09	to 31/05/09	11.31	
1/04/09	to 30/06/09	10.09	
1/05/09	to 31/07/09	11.33	
1/06/09	to 31/08/09	11.38	

Standing Sales - Average Unit Price

January 2004 to August 2009

GB



— Thinning (Instalment) — Clearfell (Instalment) — Thinning (Weight) — Clearfell (Weight) — Summary

NB - When category is not shown - No figures available for period

STANDING SALES - ENGLAND AVERAGE UNIT PRICES

			Unit Price (£/m3obs)				Unit Price (£/tonne)
Thinning (Instalment)	1/06/07	to 31/08/07	19.09	Clearfell (Weight)	1/06/07	to 31/08/07	21.01
	1/07/07	to 30/09/07	19.61		1/07/07	to 30/09/07	22.02
	1/08/07	to 31/10/07	18.39		1/08/07	to 31/10/07	18.69
	1/09/07	to 30/11/07	7.82		1/09/07	to 30/11/07	17.93
	1/10/07	to 31/12/07	18.48		1/10/07	to 31/12/07	19.37
	1/11/07	to 31/01/08	15.20		1/11/07	to 31/01/08	22.18
	1/12/07	to 29/02/08	14.00		1/12/07	to 29/02/08	15.80
	1/01/08	to 31/03/08	18.66		1/01/08	to 31/03/08	19.74
	1/02/08	to 30/04/08	18.51		1/02/08	to 30/04/08	18.86
	1/03/08	to 31/05/08	17.82		1/03/08	to 31/05/08	19.85
	1/04/08	to 30/06/08	17.12		1/04/08	to 30/06/08	20.00
	1/05/08	to 31/07/08	14.47		1/05/08	to 31/07/08	18.91
	1/06/08	to 31/08/08	12.34		1/06/08	to 31/08/08	15.88
	1/07/08	to 30/09/08	12.21		1/07/08	to 30/09/08	15.95
	1/08/08	to 31/10/08	12.27		1/08/08	to 31/10/08	12.51
	1/09/08	to 30/11/08	12.95		1/09/08	to 30/11/08	9.76
	1/10/08	to 31/12/08	14.18		1/10/08	to 31/12/08	9.78
	1/11/08	to 31/01/09	15.11		1/11/08	to 31/01/09	14.19
	1/12/08	to 28/02/09	10.41		1/12/08	to 28/02/09	13.23
	1/01/09	to 31/03/09	11.02		1/01/09	to 31/03/09	15.00
1/02/09	to 30/04/09	10.15	1/02/09	to 30/04/09	15.03		
1/03/09	to 31/05/09	10.69	1/03/09	to 31/05/09	16.22		
1/04/09	to 30/06/09	11.49	1/04/09	to 30/06/09	15.72		
1/05/09	to 31/07/09	11.44	1/05/09	to 31/07/09	15.38		
1/06/09	to 31/08/09	14.19	1/06/09	to 31/08/09	15.53		

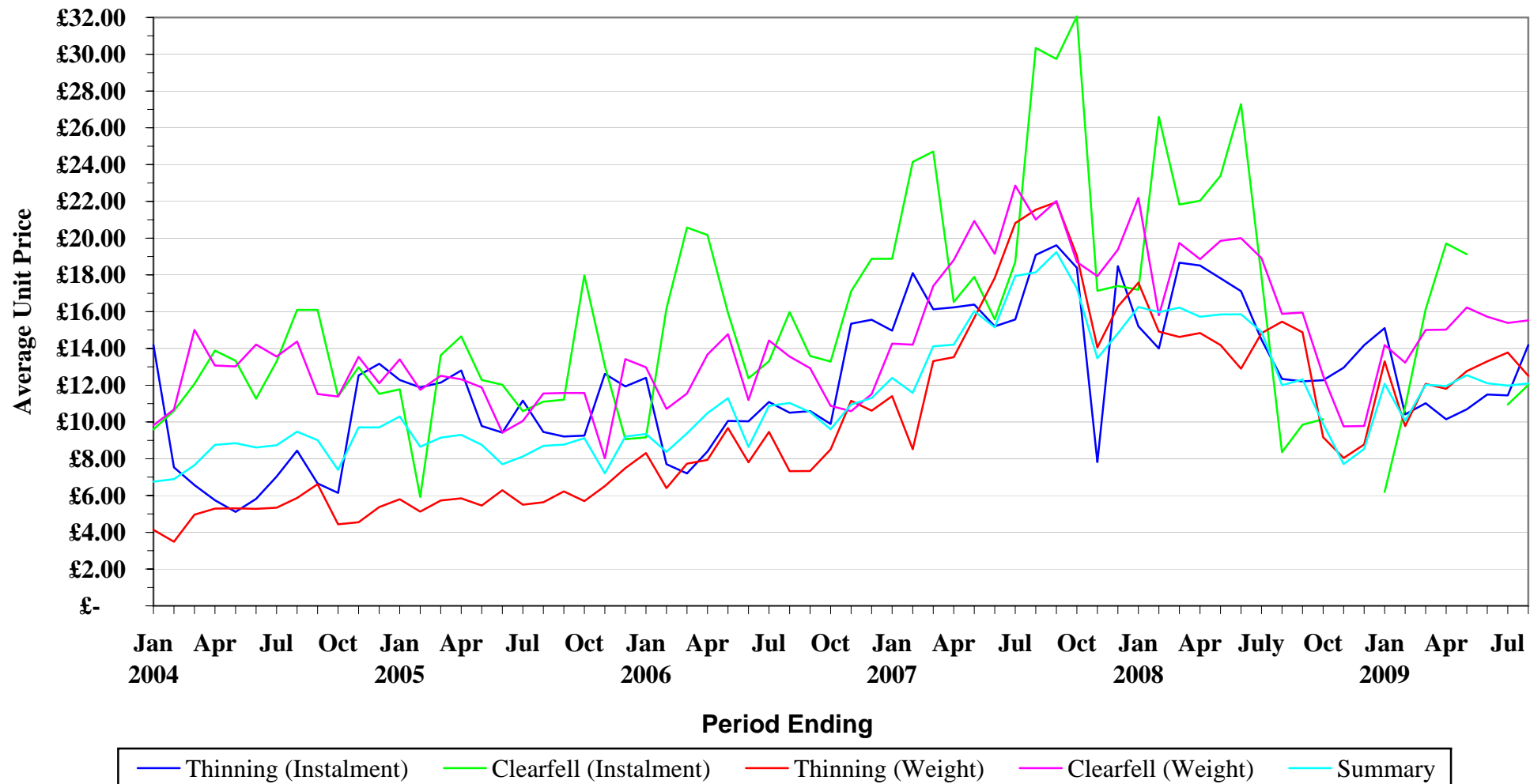
			Unit Price (£/m3obs)				Unit Price (£/tonne)
Clearfell (Instalment)	1/06/07	to 31/08/07	30.34	Summary	1/06/07	to 31/08/07	16.55
	1/07/07	to 30/09/07	29.75		1/07/07	to 30/09/07	19.24
	1/08/07	to 31/10/07	32.06		1/08/07	to 31/10/07	17.26
	1/09/07	to 30/11/07	12.85		1/09/07	to 30/11/07	13.17
	1/10/07	to 31/12/07	17.40		1/10/07	to 31/12/07	14.81
	1/11/07	to 31/01/08	17.19		1/11/07	to 31/01/08	16.25
	1/12/07	to 29/02/08	26.59		1/12/07	to 29/02/08	15.97
	1/01/08	to 31/03/08	21.82		1/01/08	to 31/03/08	16.22
	1/02/08	to 30/04/08	22.03		1/02/08	to 30/04/08	15.73
	1/03/08	to 31/05/08	23.38		1/03/08	to 31/05/08	15.85
	1/04/08	to 30/06/08	27.28		1/04/08	to 30/06/08	15.86
	1/05/08	to 31/07/08	17.88		1/05/08	to 31/07/08	14.91
	1/06/08	to 31/08/08	8.36		1/06/08	to 31/08/08	12.00
	1/07/08	to 30/09/08	9.85		1/07/08	to 30/09/08	12.31
	1/08/08	to 31/10/08	10.15		1/08/08	to 31/10/08	9.90
	1/09/08	to 30/11/08			1/09/08	to 30/11/08	7.71
	1/10/08	to 31/12/08			1/10/08	to 31/12/08	8.54
	1/11/08	to 31/01/09	6.20		1/11/08	to 31/01/09	12.08
	1/12/08	to 28/02/09	10.83		1/12/08	to 28/02/09	10.06
	1/01/09	to 31/03/09	16.13		1/01/09	to 31/03/09	12.02
1/02/09	to 30/04/09	19.71	1/02/09	to 30/04/09	11.95		
1/03/09	to 31/05/09	19.12	1/03/09	to 31/05/09	12.55		
1/04/09	to 30/06/09		1/04/09	to 30/06/09	12.11		
1/05/09	to 31/07/09	10.95	1/05/09	to 31/07/09	11.98		
1/06/09	to 31/08/09	12.01	1/06/09	to 31/08/09	12.10		

			Unit Price (£/tonne)
Thinning (Weight)	1/06/07	to 31/08/07	21.54
	1/07/07	to 30/09/07	21.96
	1/08/07	to 31/10/07	19.04
	1/09/07	to 30/11/07	14.06
	1/10/07	to 31/12/07	16.28
	1/11/07	to 31/01/08	17.57
	1/12/07	to 29/02/08	14.91
	1/01/08	to 31/03/08	14.63
	1/02/08	to 30/04/08	14.84
	1/03/08	to 31/05/08	14.18
	1/04/08	to 30/06/08	12.90
	1/05/08	to 31/07/08	14.83
	1/06/08	to 31/08/08	15.46
	1/07/08	to 30/09/08	14.88
	1/08/08	to 31/10/08	9.17
	1/09/08	to 30/11/08	8.04
	1/10/08	to 31/12/08	8.78
	1/11/08	to 31/01/09	13.29
	1/12/08	to 28/02/09	9.78
	1/01/09	to 31/03/09	12.08
1/02/09	to 30/04/09	11.80	
1/03/09	to 31/05/09	12.77	
1/04/09	to 30/06/09	13.29	
1/05/09	to 31/07/09	13.78	
1/06/09	to 31/08/09	12.51	

ENGLAND

Standing Sales - Average Unit Price

January 2004 to August 2009



NB - When category is not shown - No figures available for period

STANDING SALES - WALES AVERAGE UNIT PRICES

			Unit Price (£/m3obs)				Unit Price (£/tonne)
Thinning (Instalment)	1/06/07	to 31/08/07		Clearfell (Weight)	1/06/07	to 31/08/07	22.43
	1/07/07	to 30/09/07			1/07/07	to 30/09/07	22.00
	1/08/07	to 31/10/07			1/08/07	to 31/10/07	24.89
	1/09/07	to 30/11/07			1/09/07	to 30/11/07	25.99
	1/10/07	to 31/12/07			1/10/07	to 31/12/07	22.83
	1/11/07	to 31/01/08			1/11/07	to 31/01/08	22.65
	1/12/07	to 29/02/08			1/12/07	to 29/02/08	21.81
	1/01/08	to 31/03/08			1/01/08	to 31/03/08	12.34
	1/02/08	to 30/04/08			1/02/08	to 30/04/08	25.62
	1/03/08	to 31/05/08			1/03/08	to 31/05/08	25.05
	1/04/08	to 30/06/08			1/04/08	to 30/06/08	20.21
	1/05/08	to 31/07/08			1/05/08	to 31/07/08	9.16
	1/06/08	to 31/08/08			1/06/08	to 31/08/08	8.03
	1/07/08	to 30/09/08			1/07/08	to 30/09/08	8.23
	1/08/08	to 31/10/08			1/08/08	to 31/10/08	16.72
	1/09/08	to 30/11/08			1/09/08	to 30/11/08	16.55
	1/10/08	to 31/12/08			1/10/08	to 31/12/08	8.95
	1/11/08	to 31/01/09			1/11/08	to 31/01/09	12.71
	1/12/08	to 28/02/09			1/12/08	to 28/02/09	12.13
	1/01/09	to 31/03/09			1/01/09	to 31/03/09	13.14
1/02/09	to 30/04/09		1/02/09	to 30/04/09	13.13		
1/03/09	to 31/05/09		1/03/09	to 31/05/09	15.45		
1/04/09	to 30/06/09		1/04/09	to 30/06/09	12.93		
1/05/09	to 31/07/09		1/05/09	to 31/07/09	12.93		
1/06/09	to 31/08/09		1/06/09	to 31/08/09	10.92		

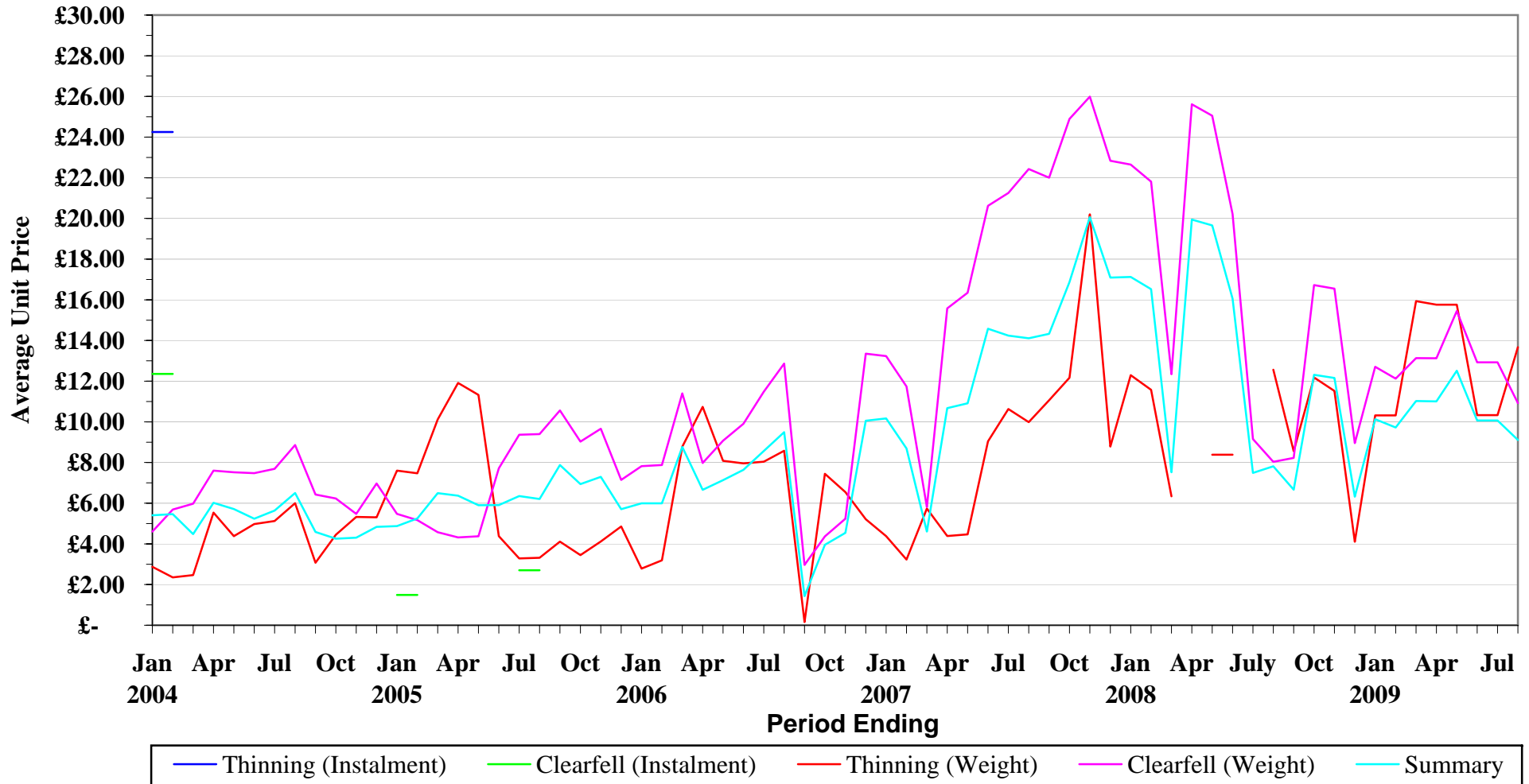
			Unit Price (£/m3obs)				Unit Price (£/m3obs)
Clearfell (Instalment)	1/06/07	to 31/08/07		Summary	1/06/07	to 31/08/07	14.11
	1/07/07	to 30/09/07			1/07/07	to 30/09/07	14.33
	1/08/07	to 31/10/07			1/08/07	to 31/10/07	16.88
	1/09/07	to 30/11/07			1/09/07	to 30/11/07	20.06
	1/10/07	to 31/12/07			1/10/07	to 31/12/07	17.09
	1/11/07	to 31/01/08			1/11/07	to 31/01/08	17.12
	1/12/07	to 29/02/08			1/12/07	to 29/02/08	16.52
	1/01/08	to 31/03/08			1/01/08	to 31/03/08	7.52
	1/02/08	to 30/04/08			1/02/08	to 30/04/08	19.95
	1/03/08	to 31/05/08			1/03/08	to 31/05/08	19.66
	1/04/08	to 30/06/08			1/04/08	to 30/06/08	16.05
	1/05/08	to 31/07/08			1/05/08	to 31/07/08	7.49
	1/06/08	to 31/08/08			1/06/08	to 31/08/08	7.81
	1/07/08	to 30/09/08			1/07/08	to 30/09/08	6.66
	1/08/08	to 31/10/08			1/08/08	to 31/10/08	12.31
	1/09/08	to 30/11/08			1/09/08	to 30/11/08	12.16
	1/10/08	to 31/12/08			1/10/08	to 31/12/08	6.32
	1/11/08	to 31/01/09			1/11/08	to 31/01/09	10.13
	1/12/08	to 28/02/09			1/12/08	to 28/02/09	9.72
	1/01/09	to 31/03/09			1/01/09	to 31/03/09	11.02
1/02/09	to 30/04/09		1/02/09	to 30/04/09	11.00		
1/03/09	to 31/05/09		1/03/09	to 31/05/09	12.51		
1/04/09	to 30/06/09		1/04/09	to 30/06/09	10.07		
1/05/09	to 31/07/09		1/05/09	to 31/07/09	10.07		
1/06/09	to 31/08/09		1/06/09	to 31/08/09	9.11		

			Unit Price (£/tonne)
Thinning (Weight)	1/06/07	to 31/08/07	9.99
	1/07/07	to 30/09/07	11.06
	1/08/07	to 31/10/07	12.17
	1/09/07	to 30/11/07	20.21
	1/10/07	to 31/12/07	8.78
	1/11/07	to 31/01/08	12.30
	1/12/07	to 29/02/08	11.57
	1/01/08	to 31/03/08	6.34
	1/02/08	to 30/04/08	
	1/03/08	to 31/05/08	8.38
	1/04/08	to 30/06/08	8.38
	1/05/08	to 31/07/08	
	1/06/08	to 31/08/08	12.56
	1/07/08	to 30/09/08	8.56
	1/08/08	to 31/10/08	12.18
	1/09/08	to 30/11/08	11.52
	1/10/08	to 31/12/08	4.10
	1/11/08	to 31/01/09	10.32
	1/12/08	to 28/02/09	10.32
	1/01/09	to 31/03/09	15.94
1/02/09	to 30/04/09	15.76	
1/03/09	to 31/05/09	15.76	
1/04/09	to 30/06/09	10.33	
1/05/09	to 31/07/09	10.33	
1/06/09	to 31/08/09	13.67	

WALES

Standing Sales - Average Unit Price

January 2004 to August 2009



NB - When category is not shown - No figures available for period

STANDING SALES - SCOTLAND AVERAGE UNIT PRICES

			Unit Price (£/m3obs)				Unit Price (£/tonne)
Thinning (Instalment)	1/06/07	to 31/08/07		Clearfell (Weight)	1/06/07	to 31/08/07	10.04
	1/07/07	to 30/09/07			1/07/07	to 30/09/07	12.35
	1/08/07	to 31/10/07			1/08/07	to 31/10/07	13.83
	1/09/07	to 30/11/07			1/09/07	to 30/11/07	14.86
	1/10/07	to 31/12/07			1/10/07	to 31/12/07	12.53
	1/11/07	to 31/01/08			1/11/07	to 31/01/08	12.39
	1/12/07	to 29/02/08			1/12/07	to 29/02/08	12.07
	1/01/08	to 31/03/08			1/01/08	to 31/03/08	11.85
	1/02/08	to 30/04/08			1/02/08	to 30/04/08	12.63
	1/03/08	to 31/05/08			1/03/08	to 31/05/08	10.90
	1/04/08	to 30/06/08			1/04/08	to 30/06/08	10.87
	1/05/08	to 31/07/08			1/05/08	to 31/07/08	8.30
	1/06/08	to 31/08/08			1/06/08	to 31/08/08	7.93
	1/07/08	to 30/09/08			1/07/08	to 30/09/08	8.92
	1/08/08	to 31/10/08			1/08/08	to 31/10/08	7.76
	1/09/08	to 30/11/08			1/09/08	to 30/11/08	8.38
	1/10/08	to 31/12/08			1/10/08	to 31/12/08	8.10
	1/11/08	to 31/01/09			1/11/08	to 31/01/09	7.23
	1/12/08	to 28/02/09			1/12/08	to 28/02/09	6.59
	1/01/09	to 31/03/09			1/01/09	to 31/03/09	6.90
1/02/09	to 30/04/09		1/02/09	to 30/04/09	7.90		
1/03/09	to 31/05/09		1/03/09	to 31/05/09	5.78		
1/04/09	to 30/06/09		1/04/09	to 30/06/09	7.47		
1/05/09	to 31/07/09		1/05/09	to 31/07/09	6.04		
1/06/09	to 31/08/09		1/06/09	to 31/08/09	8.40		

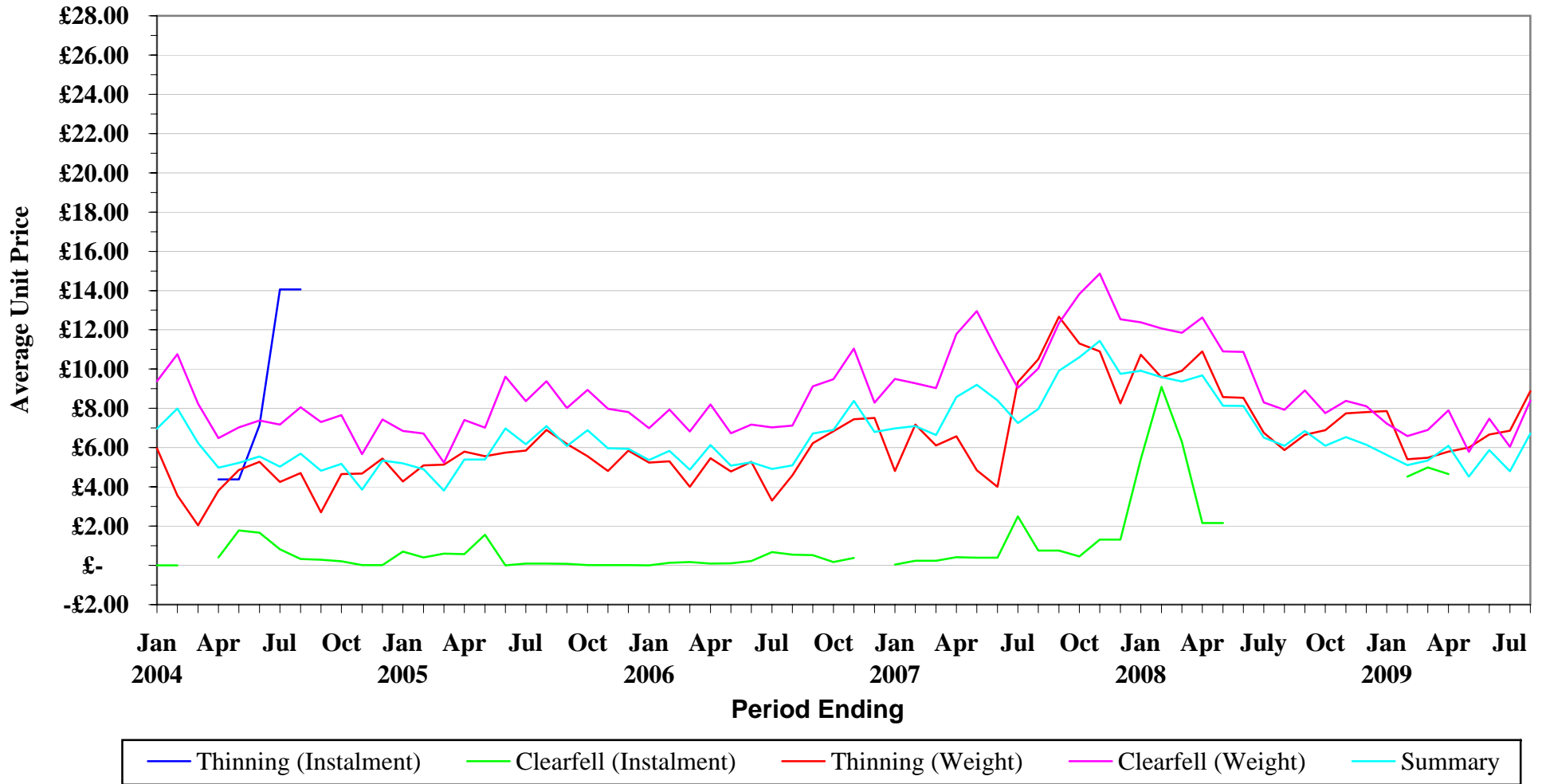
			Unit Price (£/m3obs)				Unit Price (£/m3obs)
Clearfell (Instalment)	1/06/07	to 31/08/07		Summary	1/06/07	to 31/08/07	7.97
	1/07/07	to 30/09/07			1/07/07	to 30/09/07	9.91
	1/08/07	to 31/10/07			1/08/07	to 31/10/07	10.60
	1/09/07	to 30/11/07			1/09/07	to 30/11/07	11.43
	1/10/07	to 31/12/07	1.31		1/10/07	to 31/12/07	9.76
	1/11/07	to 31/01/08	5.42		1/11/07	to 31/01/08	9.92
	1/12/07	to 29/02/08			1/12/07	to 29/02/08	9.59
	1/01/08	to 31/03/08	6.29		1/01/08	to 31/03/08	9.36
	1/02/08	to 30/04/08	2.16		1/02/08	to 30/04/08	9.68
	1/03/08	to 31/05/08	2.16		1/03/08	to 31/05/08	8.13
	1/04/08	to 30/06/08			1/04/08	to 30/06/08	8.12
	1/05/08	to 31/07/08			1/05/08	to 31/07/08	6.51
	1/06/08	to 31/08/08			1/06/08	to 31/08/08	6.09
	1/07/08	to 30/09/08			1/07/08	to 30/09/08	6.85
	1/08/08	to 31/10/08			1/08/08	to 31/10/08	6.09
	1/09/08	to 30/11/08			1/09/08	to 30/11/08	6.54
	1/10/08	to 31/12/08			1/10/08	to 31/12/08	6.15
	1/11/08	to 31/01/09			1/11/08	to 31/01/09	5.63
	1/12/08	to 28/02/09	4.52		1/12/08	to 28/02/09	5.11
	1/01/09	to 31/03/09	4.99		1/01/09	to 31/03/09	5.35
1/02/09	to 30/04/09	4.65	1/02/09	to 30/04/09	6.10		
1/03/09	to 31/05/09		1/03/09	to 31/05/09	4.52		
1/04/09	to 30/06/09		1/04/09	to 30/06/09	5.88		
1/05/09	to 31/07/09		1/05/09	to 31/07/09	4.80		
1/06/09	to 31/08/09		1/06/09	to 31/08/09	6.71		

			Unit Price (£/tonne)
Thinning (Weight)	1/06/07	to 31/08/07	10.50
	1/07/07	to 30/09/07	12.66
	1/08/07	to 31/10/07	11.30
	1/09/07	to 30/11/07	10.90
	1/10/07	to 31/12/07	8.25
	1/11/07	to 31/01/08	10.73
	1/12/07	to 29/02/08	9.57
	1/01/08	to 31/03/08	9.91
	1/02/08	to 30/04/08	10.90
	1/03/08	to 31/05/08	8.57
	1/04/08	to 30/06/08	8.53
	1/05/08	to 31/07/08	6.75
	1/06/08	to 31/08/08	5.87
	1/07/08	to 30/09/08	6.65
	1/08/08	to 31/10/08	6.89
	1/09/08	to 30/11/08	7.75
	1/10/08	to 31/12/08	7.82
	1/11/08	to 31/01/09	7.85
	1/12/08	to 28/02/09	5.40
	1/01/09	to 31/03/09	5.48
1/02/09	to 30/04/09	5.80	
1/03/09	to 31/05/09	6.01	
1/04/09	to 30/06/09	6.66	
1/05/09	to 31/07/09	6.86	
1/06/09	to 31/08/09	8.88	

SCOTLAND

Standing Sales - Average Unit Price

January 2004 to August 2009



NB - When category is not shown - No figures available for period

STANDING SALES - GB AVERAGE TREE SIZE

			Average Tree Size				Average Tree Size
Thinning (Instalment)	1/06/07	to 31/08/07	0.48	Clearfell (Weight)	1/06/07	to 31/08/07	0.32
	1/07/07	to 30/09/07	0.50		1/07/07	to 30/09/07	0.30
	1/08/07	to 31/10/07	0.44		1/08/07	to 31/10/07	0.31
	1/09/07	to 30/11/07	0.42		1/09/07	to 30/11/07	0.32
	1/10/07	to 31/12/07	0.61		1/10/07	to 31/12/07	0.33
	1/11/07	to 31/01/08	0.45		1/11/07	to 31/01/08	0.36
	1/12/07	to 29/02/08	0.46		1/12/07	to 29/02/08	0.34
	1/01/08	to 31/03/08	0.43		1/01/08	to 31/03/08	0.30
	1/02/08	to 30/04/08	0.46		1/02/08	to 30/04/08	0.32
	1/03/08	to 31/05/08	0.43		1/03/08	to 31/05/08	0.35
	1/04/08	to 30/06/08	0.33		1/04/08	to 30/06/08	0.35
	1/05/08	to 31/07/08	0.40		1/05/08	to 31/07/08	0.31
	1/06/08	to 31/08/08	0.52		1/06/08	to 31/08/08	0.31
	1/07/08	to 30/09/08	0.52		1/07/08	to 30/09/08	0.38
	1/08/08	to 31/10/08	0.49		1/08/08	to 31/10/08	0.35
	1/09/08	to 30/11/08	0.35		1/09/08	to 30/11/08	0.35
	1/10/08	to 31/12/08	0.35		1/10/08	to 31/12/08	0.37
	1/11/08	to 31/01/09	0.36		1/11/08	to 31/01/09	0.38
	1/12/08	to 28/02/09	0.38		1/12/08	to 28/02/09	0.38
	1/01/09	to 31/03/09	0.47		1/01/09	to 31/03/09	0.33
1/02/09	to 30/04/09	0.41	1/02/09	to 30/04/09	0.33		
1/03/09	to 31/05/09	0.39	1/03/09	to 31/05/09	0.34		
1/04/09	to 30/06/09	0.36	1/04/09	to 30/06/09	0.35		
1/05/09	to 31/07/09	0.30	1/05/09	to 31/07/09	0.34		
1/06/09	to 31/08/09	0.58	1/06/09	to 31/08/09	0.32		

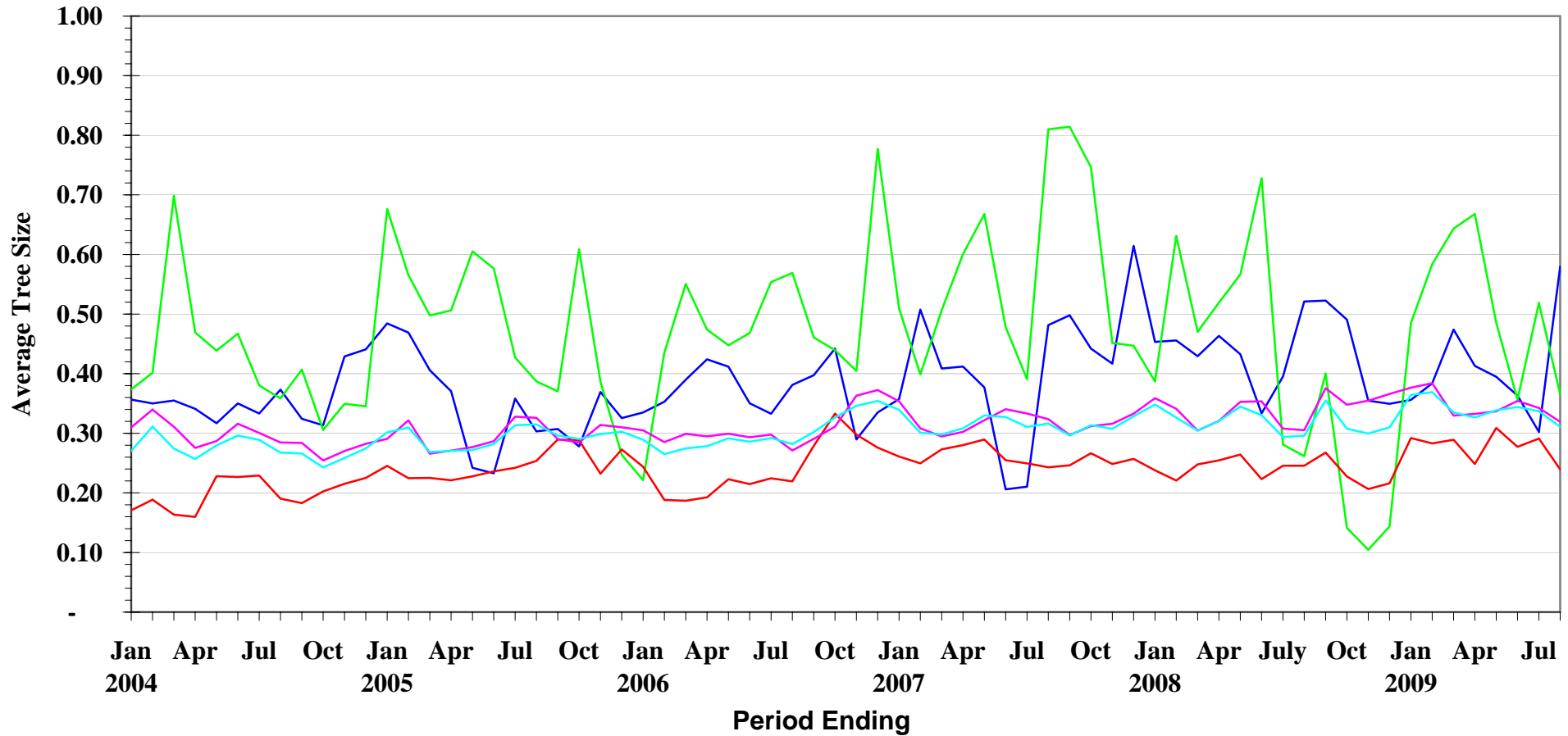
			Average Tree Size				Average Tree Size
Clearfell (Instalment)	1/06/07	to 31/08/07	0.20	Summary	1/06/07	to 31/08/07	0.31
	1/07/07	to 30/09/07	0.81		1/07/07	to 30/09/07	0.30
	1/08/07	to 31/10/07	0.75		1/08/07	to 31/10/07	0.31
	1/09/07	to 30/11/07	0.45		1/09/07	to 30/11/07	0.31
	1/10/07	to 31/12/07	0.45		1/10/07	to 31/12/07	0.33
	1/11/07	to 31/01/08	0.39		1/11/07	to 31/01/08	0.35
	1/12/07	to 29/02/08	0.63		1/12/07	to 29/02/08	0.33
	1/01/08	to 31/03/08	0.47		1/01/08	to 31/03/08	0.30
	1/02/08	to 30/04/08	0.52		1/02/08	to 30/04/08	0.32
	1/03/08	to 31/05/08	0.57		1/03/08	to 31/05/08	0.34
	1/04/08	to 30/06/08	0.73		1/04/08	to 30/06/08	0.33
	1/05/08	to 31/07/08	0.28		1/05/08	to 31/07/08	0.29
	1/06/08	to 31/08/08	0.26		1/06/08	to 31/08/08	0.30
	1/07/08	to 30/09/08	0.40		1/07/08	to 30/09/08	0.36
	1/08/08	to 31/10/08	0.14		1/08/08	to 31/10/08	0.31
	1/09/08	to 30/11/08	0.10		1/09/08	to 30/11/08	0.30
	1/10/08	to 31/12/08	0.14		1/10/08	to 31/12/08	0.31
	1/11/08	to 31/01/09	0.49		1/11/08	to 31/01/09	0.36
	1/12/08	to 28/02/09	0.58		1/12/08	to 28/02/09	0.37
	1/01/09	to 31/03/09	0.64		1/01/09	to 31/03/09	0.33
1/02/09	to 30/04/09	0.67	1/02/09	to 30/04/09	0.33		
1/03/09	to 31/05/09	0.49	1/03/09	to 31/05/09	0.34		
1/04/09	to 30/06/09	0.36	1/04/09	to 30/06/09	0.34		
1/05/09	to 31/07/09	0.52	1/05/09	to 31/07/09	0.34		
1/06/09	to 31/08/09	0.37	1/06/09	to 31/08/09	0.31		

			Average Tree Size
Thinning (Weight)	1/06/07	to 31/08/07	0.24
	1/07/07	to 30/09/07	0.25
	1/08/07	to 31/10/07	0.27
	1/09/07	to 30/11/07	0.25
	1/10/07	to 31/12/07	0.26
	1/11/07	to 31/01/08	0.24
	1/12/07	to 29/02/08	0.22
	1/01/08	to 31/03/08	0.25
	1/02/08	to 30/04/08	0.25
	1/03/08	to 31/05/08	0.26
	1/04/08	to 30/06/08	0.22
	1/05/08	to 31/07/08	0.25
	1/06/08	to 31/08/08	0.25
	1/07/08	to 30/09/08	0.27
	1/08/08	to 31/10/08	0.23
	1/09/08	to 30/11/08	0.21
	1/10/08	to 31/12/08	0.22
	1/11/08	to 31/01/09	0.29
	1/12/08	to 28/02/09	0.28
	1/01/09	to 31/03/09	0.29
1/02/09	to 30/04/09	0.25	
1/03/09	to 31/05/09	0.31	
1/04/09	to 30/06/09	0.28	
1/05/09	to 31/07/09	0.29	
1/06/09	to 31/08/09	0.24	

GB

Standing Sales - Average Tree Sizes

January 2004 to August 2009



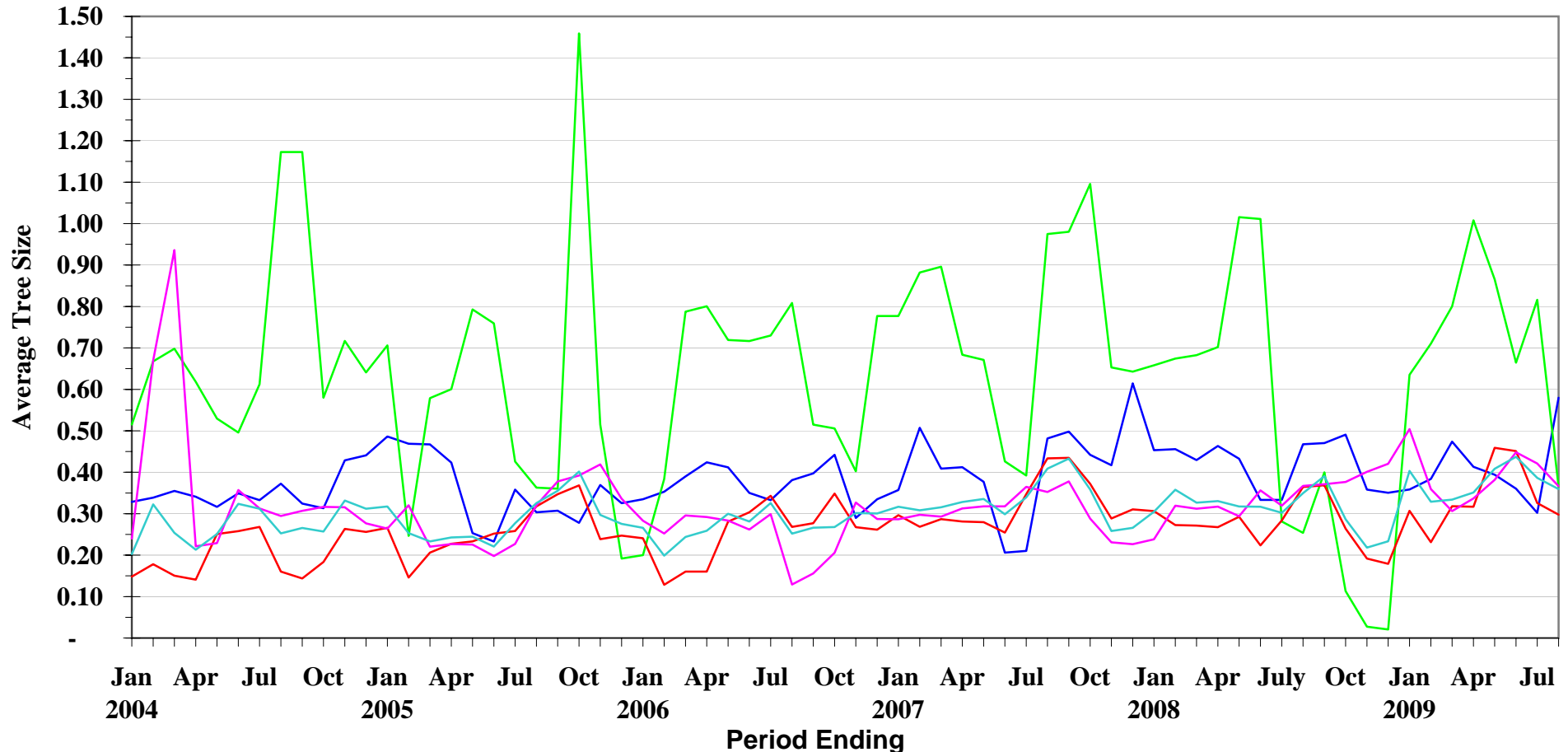
— Thinning (Instalment) — Clearfell (Instalment) — Thinning (Weight) — Clearfell (Weight) — Summary

NB - When category is not shown - No figures available for period

ENGLAND

Standing Sales - Average Tree Sizes

January 2004 to August 2009



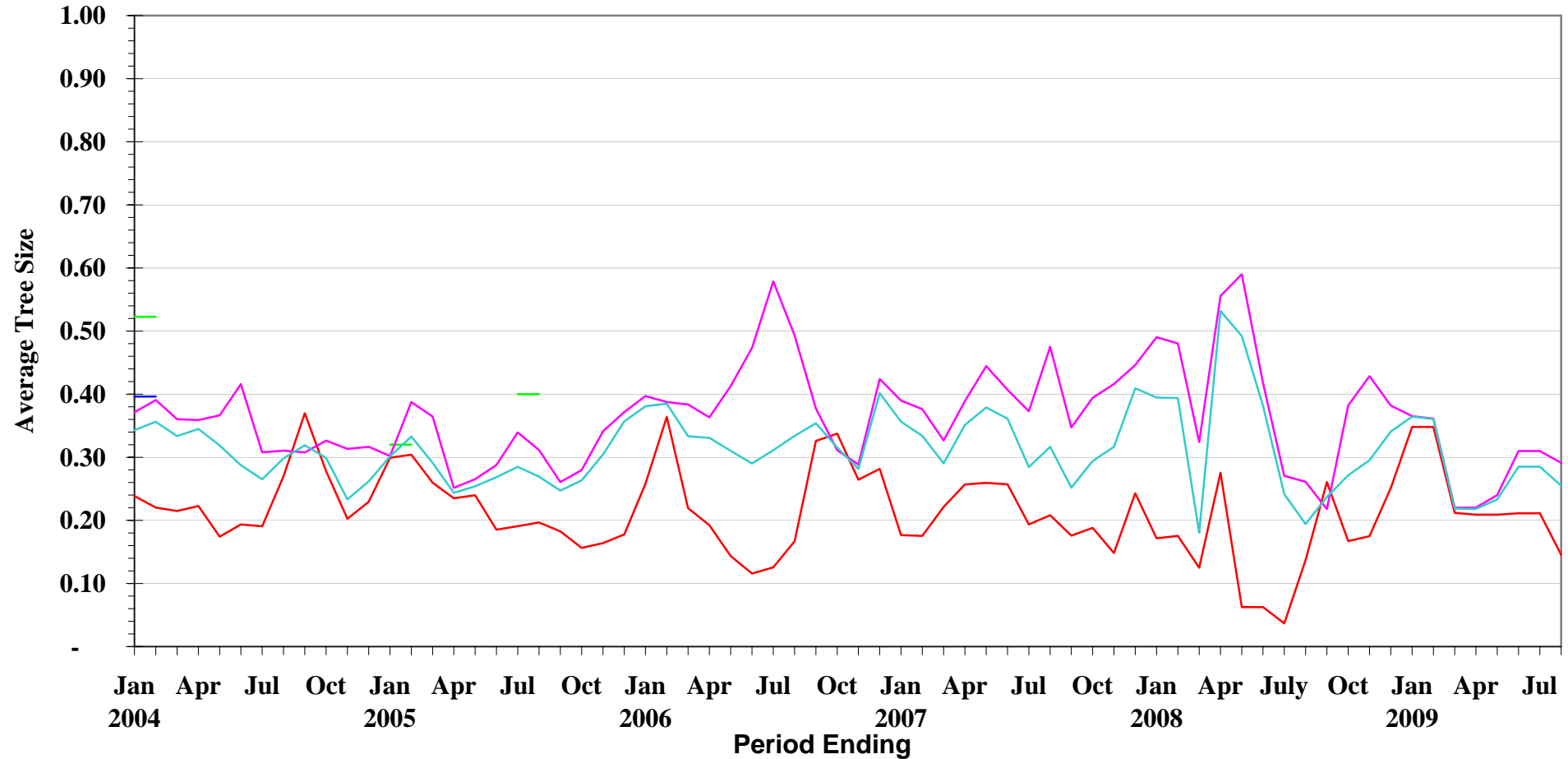
— Thinning (Instalment) — Clearfell (Instalment) — Thinning (Weight) — Clearfell (Weight) — Summary

NB - When category is not shown - No figures available for period

WALES

Standing Sales - Average Tree Sizes

January 2004 to August 2009



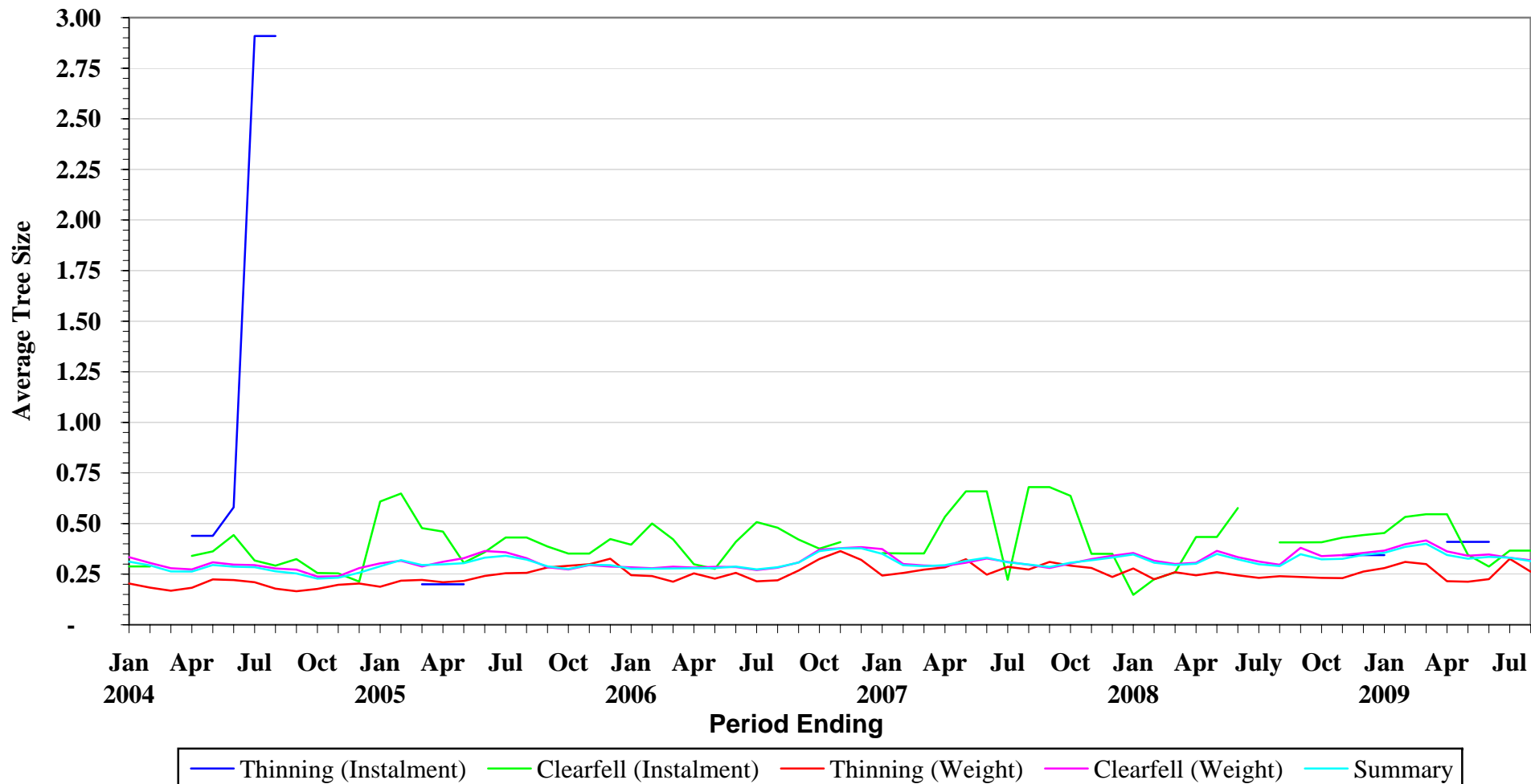
— Thinning (Instalment) — Clearfell (Instalment) — Thinning (Weight) — Clearfell (Weight) — Summary

NB - When category is not shown - No figures available for period

SCOTLAND

Standing Sales - Average Tree Sizes

January 2004 to August 2009



NB - When category is not shown - No figures available for period