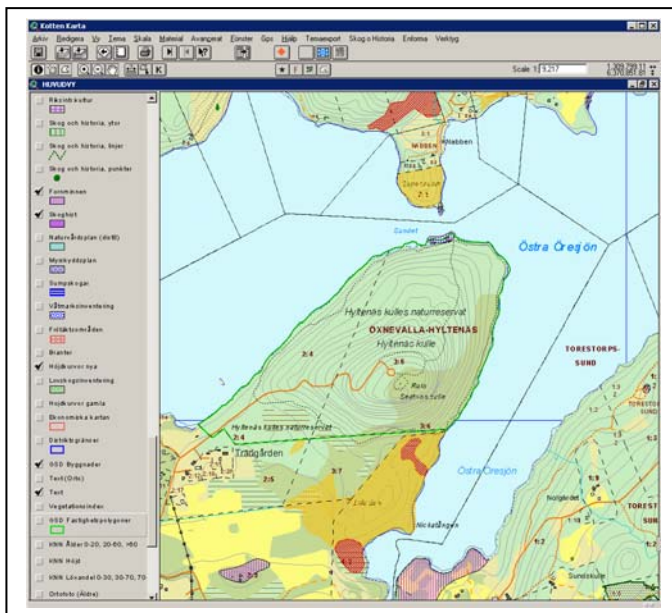


GIS and remote sensing used by the forest administration to control clear-cut notifications

GIS is used on a daily basis within the Swedish Forest Administration. During the last years remote sensing has been successfully integrated with the GIS and is today an important tool in the organisation for working in a more effective ways. The organisation is competent in remote sensing and co-operates with other organisations and researchers in different remote sensing projects to continuously develop analysis and routines.

Kotten - GIS at the forest administration

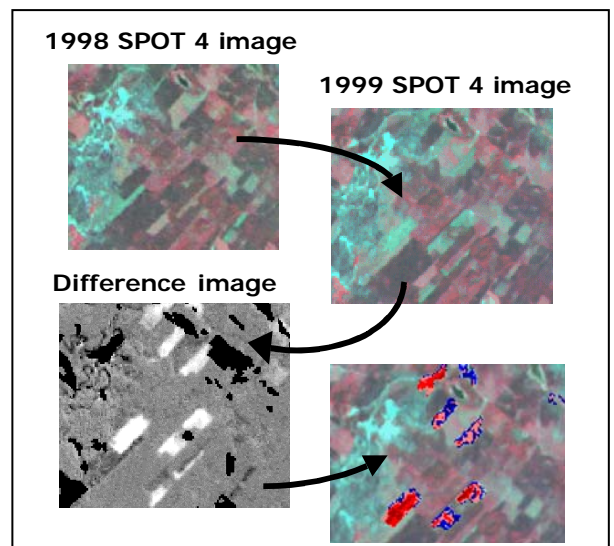
Kotten is a GIS-based forest support system for the districts and other personal within the Forest Administration. The system contains up-to-date information and provides flexible functions for registration, presentations, reports, analysis, statistics and follow-up. Available geographic data is, for instance, forest estates with owner information, land use, orthophotos and satellite images, wetlands, woodland key habitats, ancient monuments etc.



Kotten

Enforma

Enforma is a remote sensing application developed by Metria (former Satellus) in cooperation with the Swedish Forestry Administration and other European organizations. The application contains different remote sensing tools including change detection.



Enforma is well integrated with the GIS (Kotten). Since 2000 Enforma has been used by the Forest Administration to detect clear-cut areas every year. The district officers analyse and use an extension to join every clear cut to a clear-cut notification in the GIS (Kotten) to date the clear-cuts. The data set is used for statistics and follow-up information but also to identify damage in woodland key habitats and other areas containing high biological values. The database of clear-cuts will be a valuable data source for different analyses in the future.

CONTACT INFORMATION

Title: GIS-administrator, Regional Forestry Board of VG
 Name: Patrik Olsson
 Address: Box 343, 503 11 BORAS, SWEDEN
 Phone: +46 33 17 78 57
 Mail: patrik.olsson@svsvg.svo.se