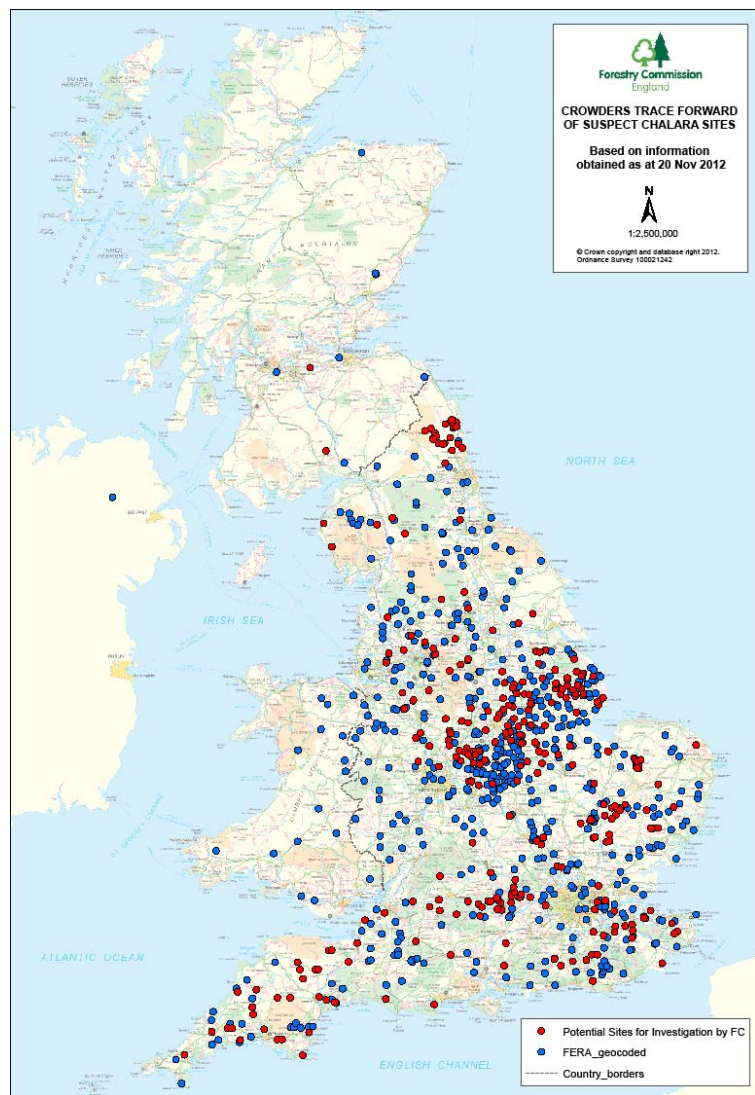


Ash Dieback – Current Status

Bruce Rothnie

Plant Health Team Manager
Forestry Commission England





Trace forward from
infected nurseries to
planting sites

Current proportion of
suspect sites visited
that have been found
to be infected between
10%-15%

Surveys of wider environment:

- FC led rapid survey – 9,900 sites visited throughout GB (supported by staff from Fera, EA, Nat Eng, Scot Govt and Welsh Assembly Govt)
- Other organisations: Country Landowners Assoc; National Trust; Woodland Trust; Ministry of Defence;
- Public enquiries and reports including Ashtag

Sites of higher suspicion followed up and sampled by FC and Fera officers

Rapid survey of wider environment:

9,906 sites investigated



752 sites (8%) with some suspicion

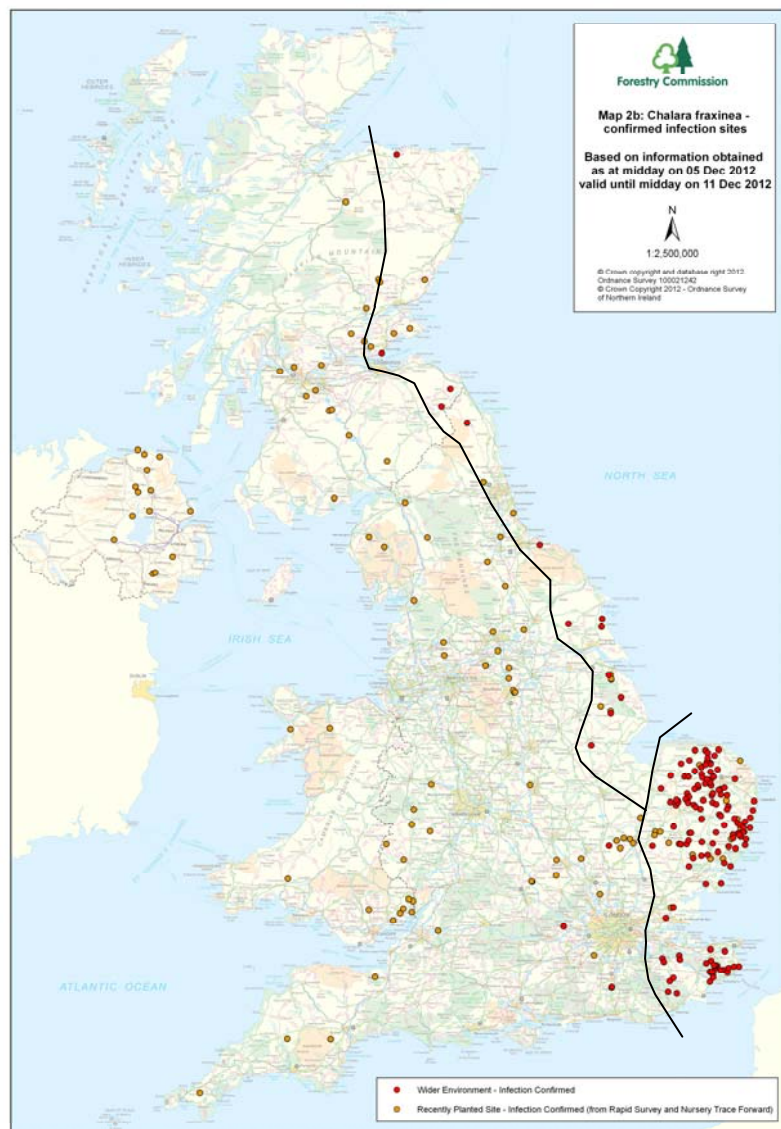


388 sites (52%) of higher concern - second visit



191 sites (49%) confirmed infected

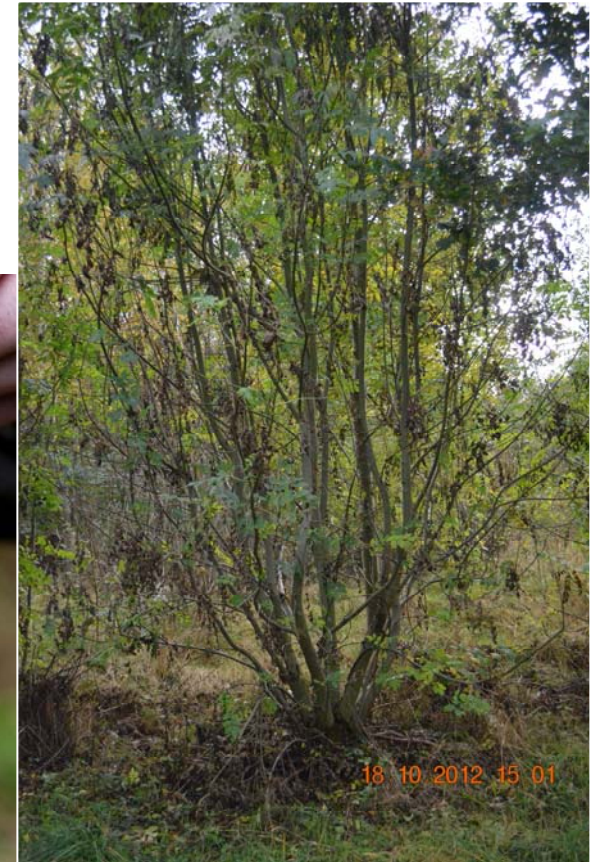
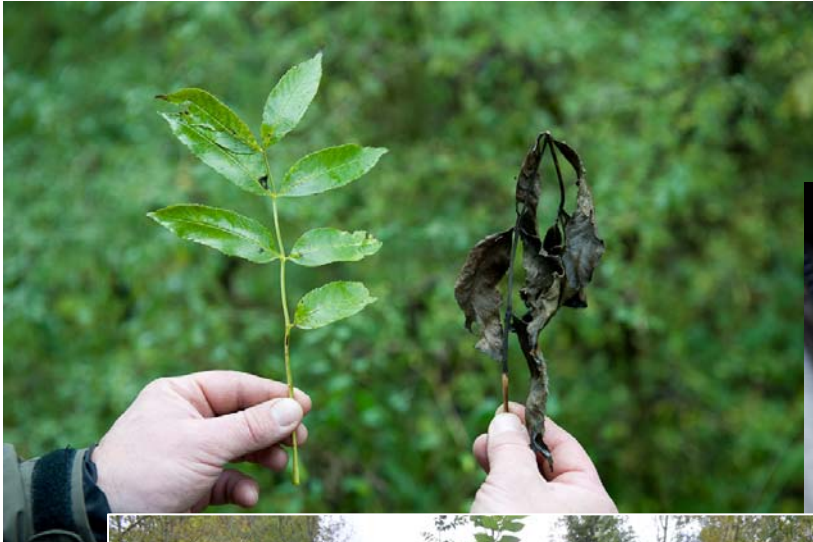
(represents 2% of the total sites investigated)



Status as at 11
December 2012

- European experience without control measures
- Eradication unlikely
- Modelling work underway to test and predict future spread
- Need to understand how the disease is spreading locally and how containment actions may affect the rate of spread
- Weather patterns will continue to have a major influence on spread

Become familiar with symptoms...



Remain vigilant

Report suspect sites using FC's Tree Alert webform



Ensure clear photographs of symptoms accompany any report submitted

Support containment action