



**Keith Jones**  
Area Director  
(Penrith)



**Donna Tavenor**  
Partnerships & Expertise Manager  
(Cannock)



**James**  
Local P



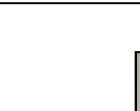
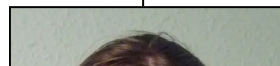
**Penny Oliver**  
Partnerships & Expertise  
Manager  
(Penrith)



**Paul Vickers**  
Field Manager  
(Delamere)



**Ewan Calcott**  
Field Manager  
(Worcester)



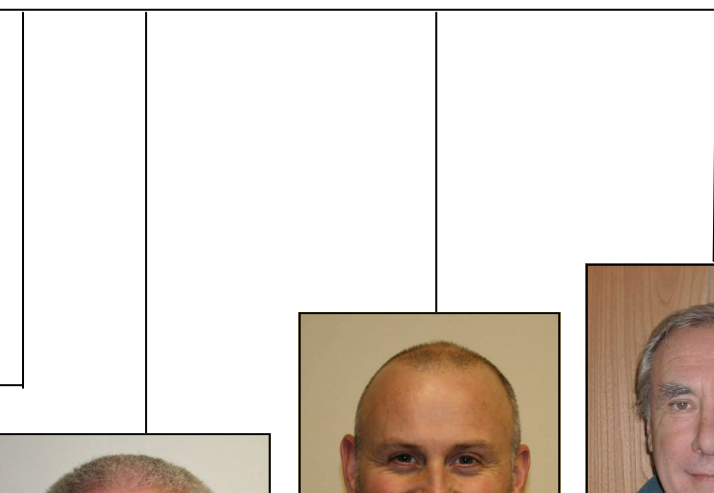
# Midlands Area Team



**Anderson-Bickley**  
Partnership Adviser  
(Penrith)



**Graham Simms**  
Admin Officer  
(Penrith)





**Andy Bennett**  
Woodland Officer  
(Penrith)



**Peter Fox**  
Woodland Officer  
(Penrith)



**Danielle Lea-Smith**  
Woodland Officer  
(Delamere)



**Jim O'Neill**  
Woodland Officer  
(Penrith)



**Jake Thompson**  
Woodland Officer  
(Delamere)



**Wayne Barnes**  
Woodland Officer  
(Worcester)

\*Please see the North West & West Midlands  
Woodland Officer Areas map for further  
details and area contacts.



**Nick Smith**  
**Woodland Officer**  
**(Ludlow)**



**Paul Webster**  
**Woodland Officer**  
**(Cannock)**



**John**  
**Winterbourne**  
**Woodland Officer**  
**(Ludlow)**