

Aetiology and ecology of red-heart in beech (*Fagus sylvatica*)

- Niko Torelli and Mitja Ferlan



Gozdarski inštitut Slovenije
Slovenian Forestry Institute

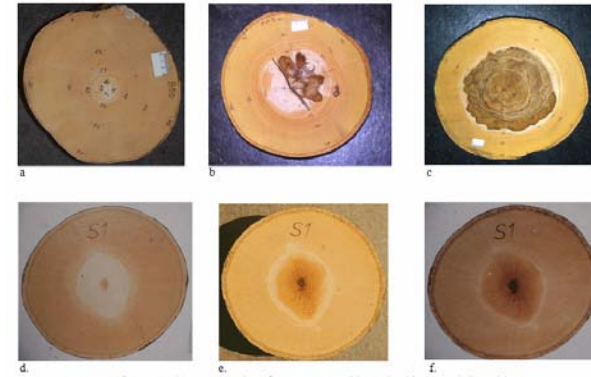
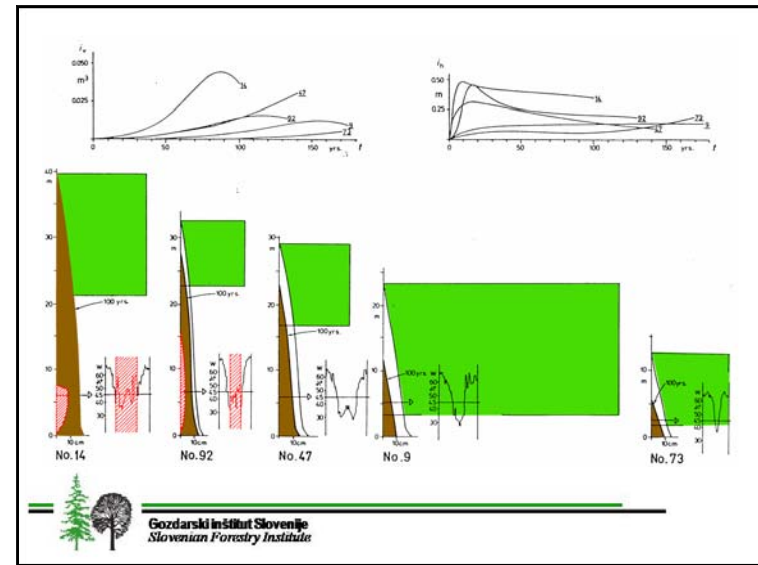
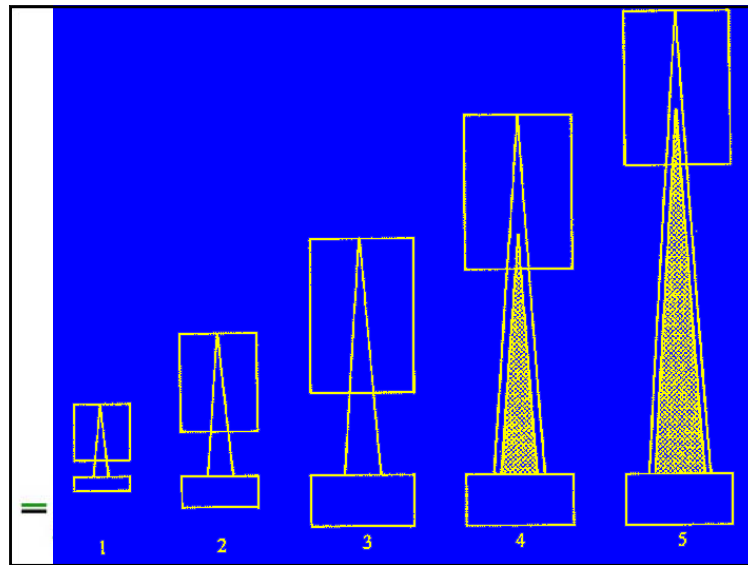


FIGURE 7 *Fagus sylvatica* L.: (a) Cross-section of a young stem without dry (ripe) wood, (b) red-heart-formation in the location of the visibly dehydrated ripe-wood-zone; (c) typical compound red heart, (d, e, f) artificial induction of the red heart in the location of the dry zone



Gozdarski inštitut Slovenije
Slovenian Forestry Institute



Gozdarski inštitut Slovenije
Slovenian Forestry Institute

