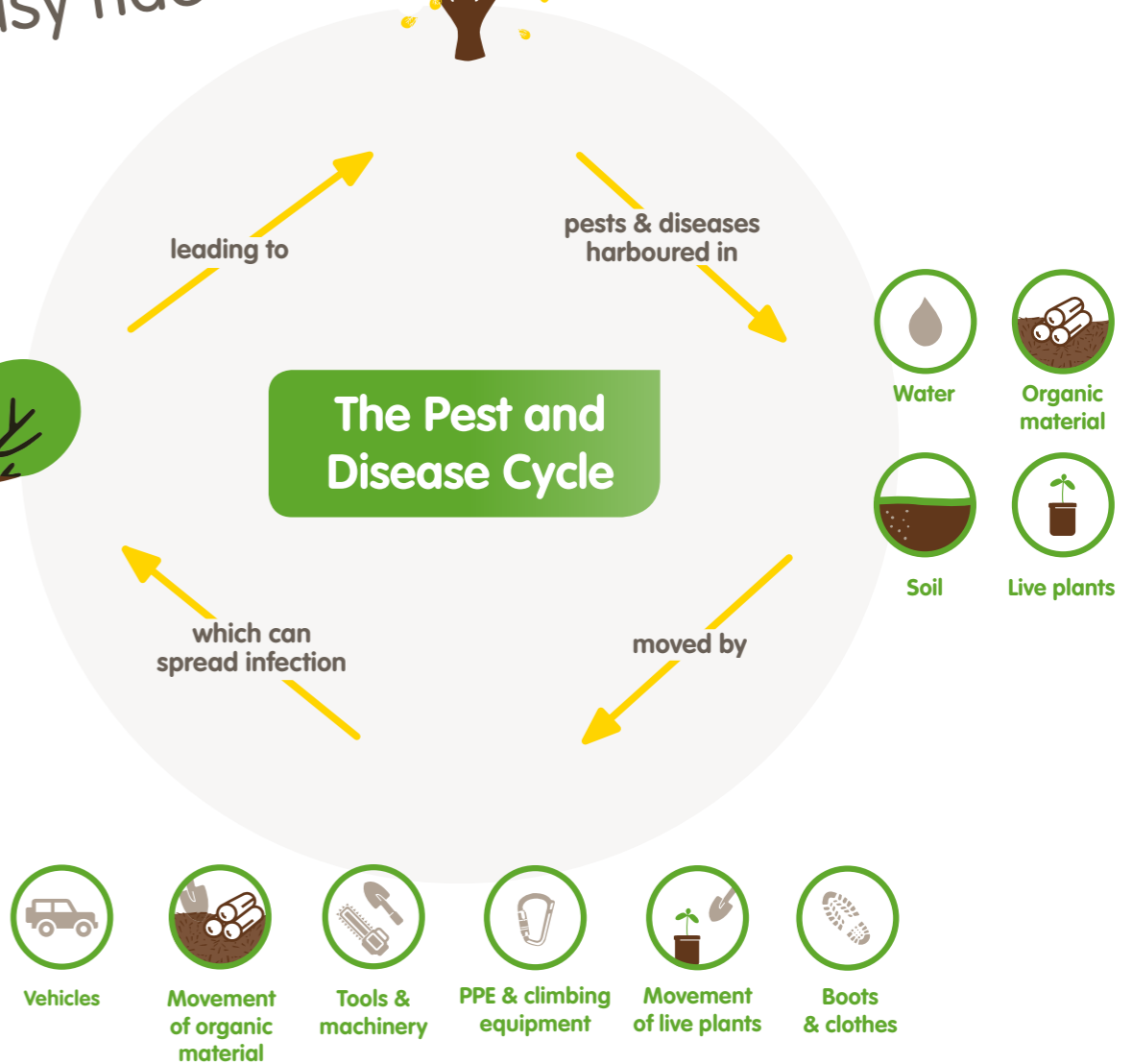




Don't give
pests and
diseases
an easy ride



Think kit

Remove soil and debris from boots, clothing, ropes, saws and other equipment before leaving any site. Regularly wash and dry ropes.

Clean and disinfect chainsaws and other cutting tools as part of routine maintenance.

Ensure machinery is cleaned regularly and positioned so as not to spread material around the site.

Think transport

Remove build-up of soil and debris on vehicles, including cabs and footwells, before leaving any site.

Use proper off-site wash-down and disinfection facilities regularly. Make a clean start each day.

Think trees

Develop relationships with nurseries you can trust to help you source plants responsibly.

Keep records of purchases and suppliers, and monitor plants for signs of ill health.

Report suspect plants to the Forestry Commission via Tree Alert.

Find out more:

Stay up to date:
forestry.gov.uk/pestsanddiseases
and follow @treepestnews on Twitter

Tell us if you spot any
ill health in trees:
forestry.gov.uk/treelert

For higher risk situations...

Good biosecurity is always important, but there are cases where you might need to be more rigorous, such as when:

- there's a disease or pest present; or
- there's a Statutory Plant Health Notice in place.

In these cases, follow the specialist guidance, or visit forestry.gov.uk/biosecurity

If you must work with infected material, for safety reasons:

- keep it separate from other arisings; and
- do not use it for mulch or firewood.

Dispose of infected material by deep burial or incineration, either on site or at a licensed handling facility.

We're all responsible for biosecurity.
 Inside you will find a poster showing
 current biosecurity guidance. Please
 integrate this into your everyday
 operations and contribute to limiting
 the spread of pests and diseases.



Key contacts and resources

Stay up to date:
 forestry.gov.uk/pestsanddiseases
 and follow @treepestnews on Twitter

**Tell us if you spot any
 ill health in trees:**
 forestry.gov.uk/treedler

**Learn more from our
 e-learning package:**
 forestry.gov.uk/biosecurity

Forestry Commission
 0300 067 4321
 tree_health@forestry.gsi.gov.uk

Arboricultural Association
 trees.org.uk

London Tree Officers Association
 ltoa.org.uk

Institute of Chartered Foresters
 charteredforesters.org/tree-health-resources



Biosecurity in Arboriculture