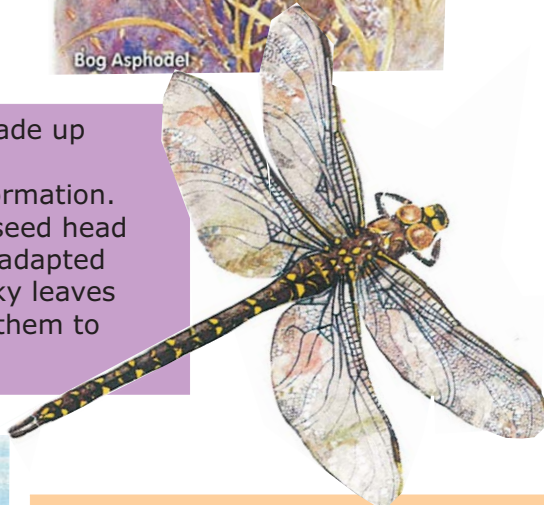




Round-Leaved Sundew

Bog Asphodel

Much of the bog vegetation is made up of Sphagnum mosses, which are particularly important for peat formation. Cotton grass with a white fluffy seed head is also widespread. Sundew has adapted to the harsh conditions with sticky leaves that can trap insects and digest them to provide nutrients.



In June and July the large heath butterfly is often seen in impressive numbers. This specialist of northern moors and heaths has declined greatly across Britain, and bogs such as Bellcrag



Large Heath Butterfly

This specially built boardwalk enables visitors to view Bellcrag Flow, while safeguarding this very special site.

Illustrations copyright E John Steele

# Welcome to Bellcrag Flow AN ANCIENT MIRE



Bellcrag Flow is one of the 55 "Border Mires" areas of peatland in the southern part of Kielder Forest with a unique mix of plants and insects.

