

The British & Irish Hardwoods Improvement Programme (BIHIP) is a consortium of organisations and individuals aiming to co-ordinate forestry research and the forest industry in Britain and Ireland. The aims of BIHIP are to:

- *promote research into provenance testing, selection, and breeding;*
- *support the establishment of trials;*
- *develop technologies to aid the rapid multiplication of improved material;*
- *promote the use of improved material;*
- *undertake education, publicity, fund raising and lobbying to further the above aims.*

BIHIP is organised into species or working groups covering six major hardwood tree species of economic importance in Britain and Ireland. The species covered are oak, ash, birch, cherry, sweet chestnut, sycamore and walnut. Each of these species presents different opportunities, potential and problems which each group aims to address. More information about the aims and latest news can be found on the website (www.bihip.com).

Forest Research, an agency of The Forestry Commission, is the principal organisation in Britain involved in forest and tree-related research. It is the main contractor undertaking research programmes for the Forestry Commission. More information can be found at www.forestry.gov.uk/research.

Please note that since the seminar is field based, participants should bring wet weather gear and appropriate and adequate footwear.

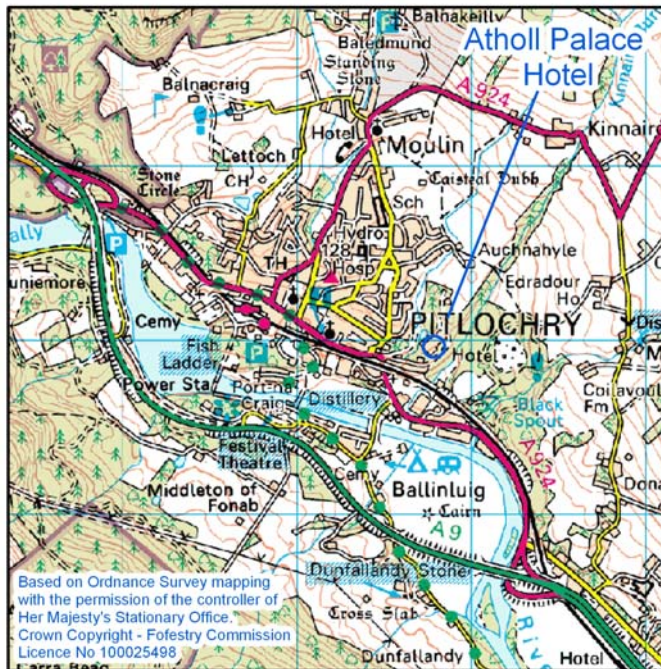
Participants should also be aware that access to certain sites is steep.

How to find the Atholl Palace Hotel

By road, Pitlochry is on the main A9 trunk road from Stirling to the north of Scotland, which links to all the motorways to Edinburgh, Glasgow and England.

By train, Pitlochry is on the main London to Inverness route, with direct connections from Edinburgh and Glasgow

By air, Edinburgh airport is only 1 hours drive away and Glasgow 1.5 hours. Car hire is available at the airport e.g. Easyjet



Enquiries:

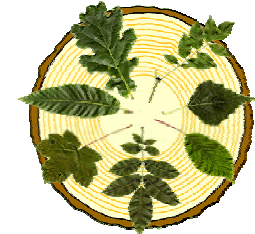
If you have any enquiries regarding the seminar please contact:

Gabriel Hemery, Secretary BIHIP, Northmoor Trust, Little Wittenham, OXON OX14 4RA

Tel.: 01865 407792.

Gabriel.Hemery@NorthmoorTrust.co.uk

British and Irish Hardwoods Improvement Programme



Field Day and Annual General Meeting

Hosted by the Birch Group and Forest Research

Based at

Pitlochry

on October 21st to 22nd

Programme and Booking Form



Broadleaved Tree Improvement

This event will:

- update participants about the latest progress in tree improvement in birch, ash and oak
- showcase the birch improvement programme in Tayside
- provide an opportunity to explore the potential and problems for growing quality broadleaves in Scotland
- provide participants with the opportunity to learn more about the general principles and issues behind tree improvement and provenance choice

This field day will be of interest to all growers, merchants and users of hardwoods.

The AGM element will comprise a short interval during lunch and is open to all.

Seminar Programme

Thursday 21st October 2004: Pre-meeting dinner

Location: Atholl Palace Hotel, Pitlochry
(<http://www.athollpalace.co.uk/>)

16:00 BIHIP Management Committee Meeting (by invitation)

19:30 Dinner: Open to All

Guest Speaker *to be confirmed*

Dinner (inc. wine), bed and breakfast are available at the hotel for £70 on 21st October. Extra night B&B at £45 p.p. subject to availability. **Please book directly with hotel and mention BIHIP.**

Friday 22nd October 2004: Field Day

9:00 Arrival at Atholl Palace Hotel and coffee

9:30 Depart Atholl Palace Hotel for Killiecrankie and Bonskeid Estate.

Topics: Birch improvement programme, plus tree selection; registration and management of seed stands; marketing and utilisation of birch

Lunch: Atholl Palace Hotel

13.15 Depart Atholl Palace Hotel for Bolfracks Estate and Craigvinian forest.

Topics: Performance of "elite" birch plus ash, cherry and sycamore; the BIHIP ash and oak improvement programmes; provenance variations and adaptation.

16:00 Close at Atholl Palace Hotel

Booking Form

Please book your place and your accommodation as soon as possible

Cost = £20 for attendance on Friday 22nd Oct.

NOTE: Please book accommodation directly with the Atholl Palace Hotel (Tel.: 01796 472400; <http://www.athollpalace.co.uk/>) and mention BIHIP.

Please register by completing the following in BLOCK LETTERS and sending it, with a cheque for £20 made payable to "Forest Research", to:

BIHIP AGM
Forest Research,
Northern Research Station,
Roslin,
Midlothian,
EH25 9SY.

NAME.....

ORGANISATION.....

ADDRESS.....

.....

.....

Daytime phone number

Fax number

E-mail

Signed

Date

Special Dietary Needs: