

## Use of Remote Sensing within Swedish Forestry Administration

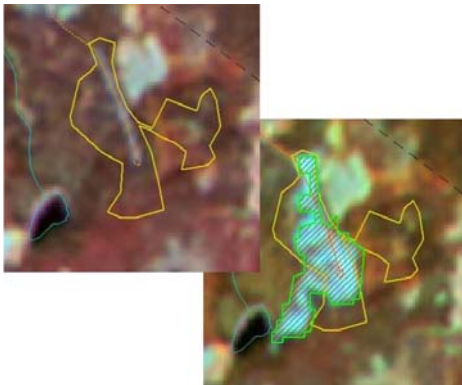
*The Swedish Forestry Administration is one of the Europe's largest users of optical satellite data. Full coverage of Sweden with satellite data every year since 1999 has been obtained. Change detection for forest monitoring is today a widespread, operational and fully accepted tool for all our 10 regional Forestry Boards.*

### GIS-based support system was the start

*In 1994, when the new Forestry Act in 1994 became effective, the forestry sector became more deregulated. The policy change gave the Forestry Administration a more consulting role with increased supervising as a major tool.*

*In 1998 was a new GIS based support system introduced to all the Administrations districts. The system is called Kotten and is still in use. With Kotten could the Administration start to utilize new techniques and new datasets.*

*Change detection in combination with satellite remote sensing proved to be a very powerful technique that could be integrated in Kotten. Since 2003 it is used yearly at all the Administrations Regions to detect all the last year's clear-cuttings.*



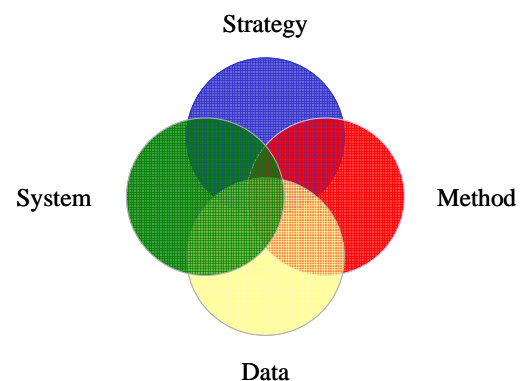
Images from two separate years. The yellow outline is notified clear-cut. The green line is the result of the change detection

### Keep it simple - but yet complete

*The use of remote sensing within the Forestry Administration is focused on applications that are of significant importance to the Administration's duties. As such, these applications have the potentials to become very distributed in the organization.*

*The two most important applications that uses remote sensing are clear-cut-monitoring and detection of pre-commercial thinning. Both of them are quit simple and easy to understand but requires a complete chain to be functional in the organization. The chain consists of four elements;*

- A strategy that defines what to do,
- a Method that describes how to do it,
- a System that implements the method,
- and Data to get the information from



*All four elements have proved to be needed for a successful implementation of the use of remote sensing technique within the Swedish Forestry Administration.*

*Among these elements it is the Data element that's the most troublesome for the moment.*

### CONTACT INFORMATION

Title  
Name Anders Persson  
Address National Board of Forestry, Sweden  
Phone +46 36 155628  
Mail anders.persson@svo.se