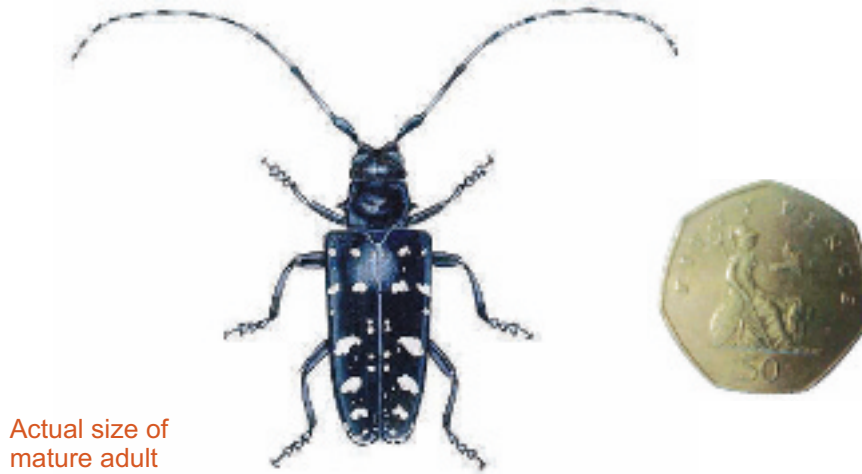


HELP US STOP THIS BEETLE

Image courtesy of US Department of Agriculture



Actual size of
mature adult

The serious tree pest **Asian longhorn beetle** has been found in your area and we need your help to stop it spreading

This is how you can help:

- Tell us if you see any signs of it. Call Fera on **0844 2480071**.
The most obvious signs of damage are circular holes in trunks or branches.
Adult beetles usually appear between May and October.
- Please hold back from any felling/tree surgery or pruning of woody shrubs on your property. The beetle's larvae live in trunks and branches so it is important to make sure these are properly disposed of.
- If you do have to prune or fell trees or woody shrubs, please make sure that woody material is taken to an appropriate Kent County Council waste transfer station or recycling site.

Please turn over to see pictures of the beetle and the damage it can cause.

**Thank you for helping to eradicate this
threat to our treasured trees**

PLANT PEST ALERT

KEEP A GOOD LOOK OUT



Exit holes are around 10mm in diameter and found on the trunk and branches

An adult Asian longhorn beetle by an exit hole (image to scale).

Adults are 20 to 40mm in length and their antennae are at least as long as their body



Image courtesy of US Department of Agriculture

The beetle larvae live in the tree trunk and branches causing serious damage that will kill the tree. The beetle likes to lay eggs in maples (including sycamore), elm, willow, horse chestnut, birch and poplar. But alder, apple, ash, beech, plane, prunus species (including cherry) and pear are also at risk from attack.

If you see any signs of this beetle, call Fera on 0844 2480071

Further details of what to look out for can be found at:

www.defra.gov.uk/fera/alb and
www.forestry.gov.uk/asianlonghornbeetle

There is a legal obligation to report the beetle or suspicious signs included in the Plant Health (England) Order 2005 and the Plant Health (Forestry) Order 2005. These are available at www.legislation.gov.uk/