

# Tylers Wood



A small grassland hilltop and valley side sloping down to a bridleway.

With connections across the M25 to the north and joining Tylers Common to the west. Surprisingly, with its long history as arable land, Tylers Wood has never been part of this adjacent common. From the top the views are excellent. At the picnic spot you can see right across the Docklands to the City of London, with its distinctive 'gherkin' and on into the West End and the London Eye. This all makes for a pleasant site for sitting and contemplating, or for taking a gentle stroll with your dog around this lightly wooded hillside.



## A word from the past

Some of the woods you see to the north of the site have an unusual name – 'Shaw'. Several other local woods have this name too. It's an archaic term that can be traced back to Saxon times and remained in use until the late nineteenth century. Shaw then denoted a small wood, thicket, copse or grove.

## Locations and information Enjoy your visit



Thames Chase



## Visit Tylers Wood

Enjoy & Discover your forests & woodlands

### Public Transport:

Visit [www.transportdirect.info](http://www.transportdirect.info)

### Car:

FREE car park on site

### Post Code:

RM14 1TR

### OS Ref:

TQ 574 905



### Thames Chase Community Forest:

Thames Chase is part of 12 Community Forests in England. With a network of 47 sites, its aim is to help promote the creation and continuing development of greenspace on the edge of East London and South Essex. The Forestry Commission own and manage 10 community woodlands within this area.

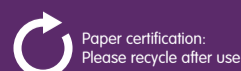
### Contact:

Forestry Commission, FREEPOST, The Forest Centre, Pike Lane, Upminster, Essex RM14 3NS  
e: [thameschase@forestry.gsi.gov.uk](mailto:thameschase@forestry.gsi.gov.uk) t: 01708 642 964

» To find out more about England's Forests, get the Forestry Commission's iPhone App now.

» [www.forestry.gov.uk/thameschase](http://www.forestry.gov.uk/thameschase)

Design: [www.dynamiccreative.co.uk](http://www.dynamiccreative.co.uk)  
07/11. © Forestry Commission



[www.forestry.gov.uk/thameschase](http://www.forestry.gov.uk/thameschase)





# Tylers Wood

## Tylers Wood Fact File

Size: 14ha  
 Walks: 2.2km  
 (0.4km is un-surfaced)  
 Cycling: 1.8km  
 Horses: throughout grassed areas and brideway  
 Open: 8.00am to dusk  
 Parking: Free  
 Created: 2002

### What else is nearby?

Tylers Common is next door and from there it's only a short walk to Harold Court Woods and Pages Wood. To the north are Jermain's Wood and Wormwalk Shaw, while over the M25 via the brideway bridge are Bridge Wood and Jackson's Wood, plus footpaths to Warley Place and Codham Hall.

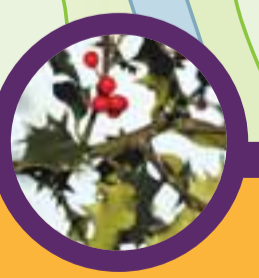
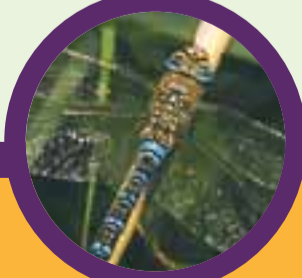
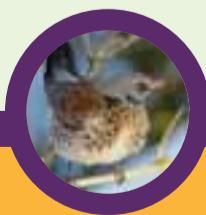
### Key

- ..... Walkers or cyclists
  - ..... Footpath
  - ..... Horse
  - ..... Bridleway
  - Bench
  - Car Park
  - Picnic table
  - Dog bins
  - Meadow
  - Woodland
  - Urban area
- 0 40m  
Scale
- ↑  
N

### Tylers Common

**Woodland Code:** Cycle with care. Respect the peace and quiet of the woods and wildlife. Take your litter home with you. Never light fires and smokers take care. Dogs are welcome but please keep them under close control and always clean up after your pet.

**Riders Code:** Please walk or trot on the marked trails. Do not canter or gallop. Please do not ride on the pink paths – they are for pedestrians.



### What's out or about?

Jan Feb Mar Apr May Jun Jul Aug Sep Oct Nov Dec

Wintering fieldfare and redwings  
Territorial robins  
 Elder first leaves  
Kestrels hunting from perches  
 Newts and frogs return to ponds  
 Bluebells  
 Swallows and martins being to nest  
 Painted Lady butterfly  
 Brown argus  
Grass snakes basking  
 Dragonflies hawking  
Clouded yellow butterfly  
 Foxes active  
Spiders webs on dewy mornings  
 Blackberries  
Autumn colours  
 Elderberry and sloes on blackthorn  
Weasels hunting  
 Holly blossoms

There's plenty to see and hear throughout the year