



VISITOR MONITORING TRENDS INDEX REPORT

**Report on the changes in visitor numbers from 1999 to 2000
for Forest Enterprise sites**

Vicky West & Vani Balachandran

Economics & Statistics Unit, Forestry Commission

May 2002

This report was prepared by the HQ Economics & Statistics Unit of the Forestry Commission. Any enquiries should be addressed to:

Vicky West
Economics & Statistics Unit
Forestry Commission
231 Corstorphine Road
Edinburgh EH12 7AT
Great Britain
Telephone: +44 (0)131 314 6218
Email: statistics@forestry.gov.uk

CONTENTS

1. INTRODUCTION	1
2. VISITOR NUMBER TRENDS 1999 TO 2000	4
2.1 Forest Enterprise sites	4
2.2 Other Comparable (non-FE) sites	5
2.3 Comparison of changes in visitor numbers for FE and Other Comparable (non-FE) sites	6
3. METHODOLOGY	8
3.1 Forest Enterprise Sites	8
3.2 Other Comparable (non-FE) sites	9
Appendices	
1. Results for Scottish sites	10
2. Results for English sites	12
3. Results for Welsh sites	15

1. INTRODUCTION

This paper presents information on the changes in visitor numbers at selected Forest Enterprise (FE) sites between 1999 and 2000. It also compares the changes in visitor numbers at Forest Enterprise sites and Other Comparable (non-FE) sites.

The Visitor Monitoring Trends Index is derived from counts of visits to Forest Enterprise sites which are provided by Forest District offices and Territorial offices. The Trends Index uses monthly readings from a number of sources: vehicle counters, pay and display ticket sales, Forest Drive ticket sales, pedestrian counters, cycle counters and Visitor Centre counters. All sites in Great Britain for which there was enough available data have been included in analyses.

A similar index of visits to comparable non-Forest Enterprise sites is calculated from information provided by the National Tourist Boards for England, Scotland and Wales. We consider the following type of sites to be comparable to a Forest Enterprise site; Visitor Centres, Country Parks, Farms, Gardens and Wildlife attractions.

Section 2 summarises the changes between 1999 and 2000; section 3 outlines the methods used. The location of each Forest District is indicated in Figure 1. More detailed results for each Forest Enterprise site are available in the appendices.

Contacts:

Vicky West
Economic & Statistics Unit
Forestry Commission
231 Corstorphine Road
Edinburgh
EH12 7AT
Tel: 0131 314 6218
Fax: 0131 316 4344
Email: statistics@forestry.gsi.gov.uk

Paddy Harrop
Environment & Communications
Forest Enterprise
231 Corstorphine Road
Edinburgh
EH12 7AT
Tel: 0131 314 6448
Fax: 0131 314 6316
Email: p.harrop@forestry.gsi.gov.uk

Figure 1: Map of GB indicating the Forest District Boundaries



2. VISITOR NUMBER TRENDS 1999 to 2000

2.1 Forest Enterprise sites

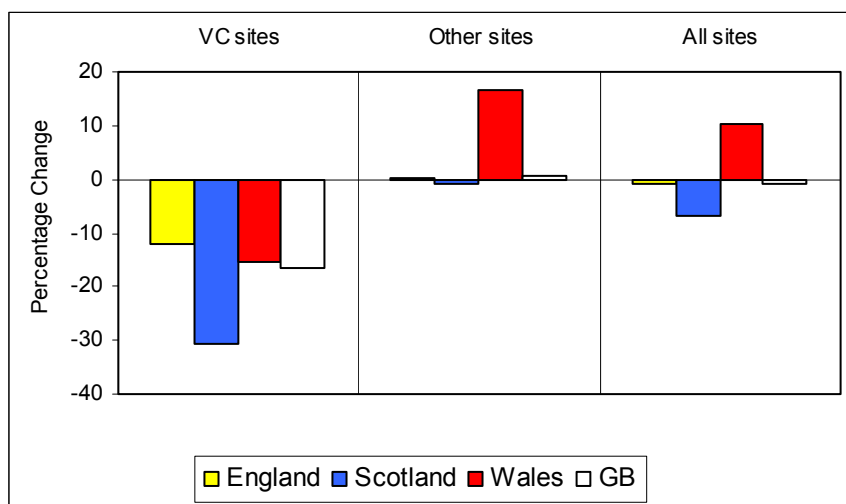
Analysis indicates that the overall number of visits to Forest Enterprise sites in Great Britain has decreased slightly (1 %) from 1999 to 2000. Visitor numbers in Scotland and England have shown decreases of 7 % and 1 % respectively, whilst visitor numbers in Wales have shown an increase of 10 %.

In Scotland, the number of visitors at Visitor Centres have shown a large decrease between 1999 and 2000. Visitor numbers were also much lower at Visitor Centres in England and Wales in 2000, so that there was an overall decrease of 17 % in visitor numbers at Visitor Centres in GB from the previous year. At the non-Visitor Centre sites, however, there was a large increase in visitor numbers in Wales, but very little change in Scotland or England. This resulted in an overall 1 % increase in visitor numbers at non-Visitor Centre sites in GB. Table 1 and Figure 1 show the percentage change in visitor numbers to Forest Enterprise sites from 1999 to 2000. The overall percentage changes for Visitor Centre and other sites combined (All sites) and each country combined (GB) are estimated by weighting the individual country (England/Scotland/Wales) and site-type (Visitor Centre/Other) percentage changes in proportion to estimates of total visits to Forest Enterprise sites (See Table 4).

Table 1: % change in visitor numbers at Forest Enterprise Sites 1999 – 2000

	Visitor Centre sites	Other sites	All sites
England	-12.2%	0.1%	-0.8%
Scotland	-30.5%	-0.7%	-6.7%
Wales	-15.5%	16.8%	10.3%
Great Britain	-16.6%	0.8%	-0.8%

Figure 2: % Change in visitor numbers at Forest Enterprise sites 1999 - 2000



2.2 Other Comparable (non-FE) sites

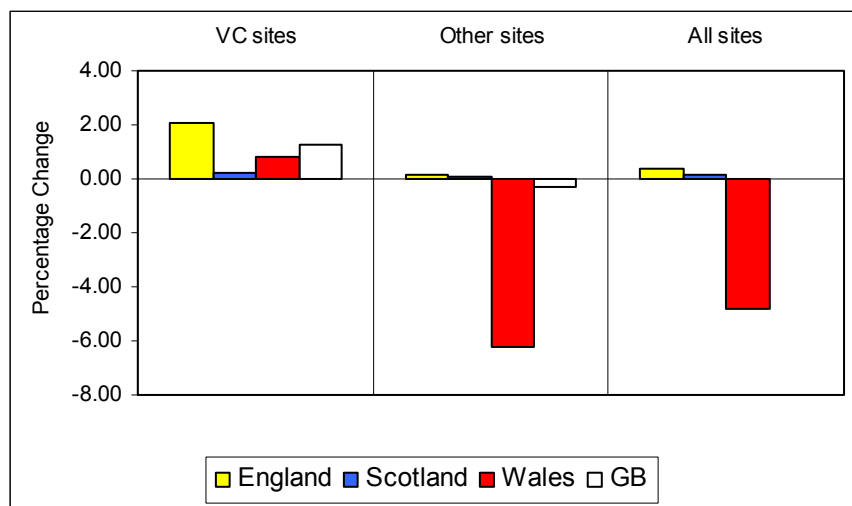
At other sites which are considered comparable to Forest Enterprise (FE) sites, the number of visits in Great Britain shows virtually no change between 1999 and 2000. Visits in England and Scotland have increased slightly (0.4 % and 0.2 % respectively), whereas those in Wales have decreased (-4.8 %).

At Visitor Centres there was generally an increase in visitor numbers. This was highest in England (2 %), with smaller increases in Scotland and Wales. There was generally little changes in visitor numbers at other sites, with the exception of Wales, where visitor numbers were down by 6.3 %. Table 2 and Figure 3 show the percentage change in visitor numbers at comparable non-FE sites between 1999 and 2000. The overall percentage changes for Visitor Centre and other sites combined (All sites) and each country combined (GB) are estimated by weighting the individual country (England/Scotland/Wales) and site-type (Visitor Centre/Other) percentage changes in proportion to the number of sites in each category.

Table 2: % change in visitor numbers at comparable non-FE sites 1999 – 2000

	Visitor Centre sites	Other sites	All sites
England	2.1%	0.2%	0.4%
Scotland	0.3%	0.1%	0.2%
Wales	0.8%	-6.3%	-4.8%
Great Britain	1.2%	-0.3%	-0.0%

Figure 3: % change in visitor numbers at comparable non-FE sites 1999-2000



NOTE: These figures are not intended to indicate the overall trends in visits to GB attractions, they are designed solely for the comparison with FE trends. 'Sightseeing in the UK 2000' estimates that the change in visitor numbers to all attractions in the UK is a decrease of 2 %. The change for each category in the UK is Country Parks (-1 %), Farms (-7 %), Gardens (-2 %), Visitor Centres (-1 %) and Wildlife attractions and zoos (-2 %).

2.3 Comparison of changes in visitor numbers for FE and Other Comparable (non-FE) sites

Visitor numbers at Forest Enterprise sites and other comparable sites in GB both decreased slightly between 1999 and 2000. The decrease at Forest Enterprise sites (-0.8 %) was greater than that at the other sites (-0.03 %).

Whereas the Forest Enterprise sites saw increases in visitor numbers in Wales and decreases in England and Scotland, the other comparable sites saw the reverse pattern of changes in visitor numbers from 1999 to 2000.

Forest Enterprise Visitor Centres in England, Scotland and Wales experienced decreases in visitor numbers from 1999 to 2000 (See Figure 2 and Figure 3). This was not the case at Visitor Centres at other comparable non-FE sites, where there was an increase in visitor numbers. There was generally little change at Forest Enterprise Other Sites, with the exception of Wales which showed large increases in visitor numbers. However, non-FE Other sites showed large decreases in visitor numbers in Wales, with little change in England and Scotland.

Table 3: % change in visitor numbers at FE and other sites 1999 - 2000

	FE sites	Non-FE sites
England	-0.8%	0.4%
Scotland	-6.7%	0.2%
Wales	10.3%	-4.8%
Great Britain	-0.8%	-0.0%

Figure 4: Box plots showing the distribution of change in visitor numbers at FE and non-FE (BTA) sites from 1999 to 2000 at sites in England (top), Scotland (middle) and Wales (bottom) for Visitor Centre sites (left) and Other sites (right)

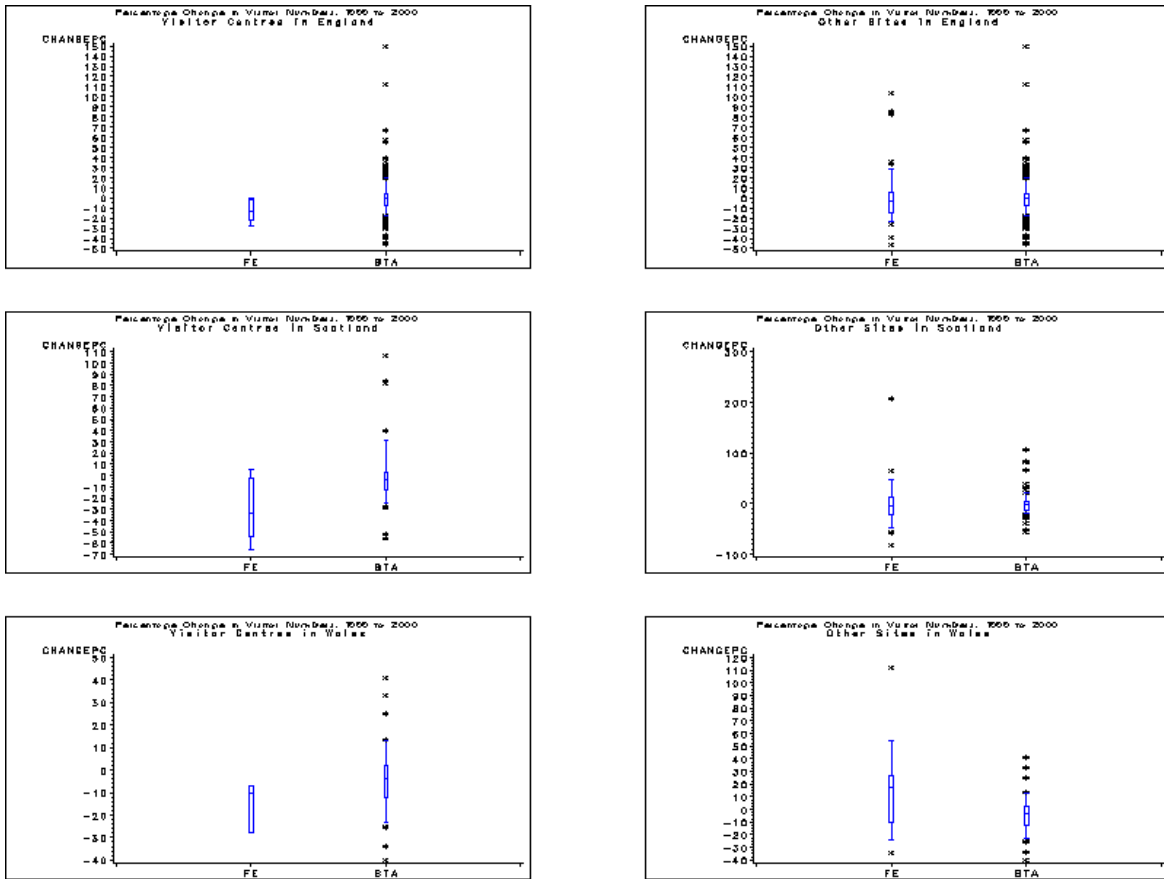


Figure 4 shows the range of percentage changes at Visitor Centre and Other sites in each country, at FE ('FE') and non-FE ('BTA') sites. For example the top left plot shows changes at English Visitor Centres for FE and non-FE sites. In the charts, half of the results are in the 'box', and the horizontal line shows the median value. The vertical lines cover most of the other values and the * symbols represent the extreme 10 % of values at each end of the distribution. The non-Visitor Centre sites show much more variation mainly due to the larger number of sites.

3. METHODOLOGY

3.1 Forest Enterprise Sites

Trend at each site

For each site, the percentage change is calculated between the readings provided in 1999 and those in 2000. These readings represent the counts recorded by the counters, which may be numbers of people or vehicles. Any month for which there is missing or incorrect data in either year is excluded. Sites were excluded from this analysis if there was less than six months valid data.

Trend at Visitor Centre and other sites

The trend at sites in each type of location (Visitor Centre, other site) in each country (Scotland, England, Wales) were combined, by calculating a simple average of the percentage changes for each of the 6 groups. The percentage changes for all Visitor Centres within each country are given equal weight. Percentage changes for other sites within each country are also given equal weight and are taken to be representative of Forest Enterprise sites not included. Smaller sites are given the same weighting as large sites, as these are a proxy for the numerous small sites that have no counter.

Trend at all sites in GB

The UK Day Visits Survey suggests that in total there are 50 Million day visits to FE woodland. Trends Index data from previous years has allowed us to estimate the breakdown of visitors to Visitor Centres and non-Visitor Centre sites. We assume that the breakdown of visitors to FE woodland between Scotland, England and Wales is in the proportions 10 %, 85 % and 5 % respectively. This is based on information from the UK Day Visits Survey.

We therefore calculated the trend at all sites in each country and at Visitor Centre and non-Visitor Centre sites in GB by using weights proportional to the visitor numbers given in table 4.

Table 4: Estimated number of visitors (millions per year)

	Visitor Centre sites	Other sites	All sites ²
Scotland	1.0	4.0	5.0
England	3.0	39.5	42.5
Wales	0.5	2.0	2.5
Great Britain	4.5	45.5	50.0¹

Note:

1. The estimate of 50 million visitors per year is based on data from the UK Day Visits Surveys
2. Total numbers of visitors by country are based on an estimated 10%, 85%, 5% breakdown of the total for Scotland, England and Wales respectively.

Estimates of annual visitor numbers

Estimates of 12-month visitor numbers to each non-Visitor Centre site (see appendices) were obtained by multiplying counts at each site by an estimate of the average number of visitors per count at each site (E.g. 1 person per pedestrian count). A calibration exercise has been carried out at some sites to calculate this factor for vehicle counts. Wherever this calibration factor was unavailable, we estimate that there are 2.5 people per car. These full year calibrated totals are comparable between sites, though it must be noted that some sites were open for less than twelve months.

For sites where there was less than 12 months valid data, totals for any missing months were estimated using the average percentage change for that month across all sites within that Forest District (For example, in April 1999 there was no data for Simonside in Kielder Forest District. This was estimated by increasing the April 1998 count by 35 % - the average percentage change for April in the Kielder Forest District). If there was no data in either year in a given month at a given site, we did not estimate the annual total visitor number for that site.

Visitor numbers estimated from pay and display tickets assume that all visitors purchase a ticket. Observations have shown that the honesty rate is always below 100 %, so these figures will be underestimates of the true visitor numbers at these sites.

We have not calculated annual totals for Visitor Centres since most are closed for a period over the winter months.

3.2 Other Comparable (non-FE) sites

Forest Enterprise sites are compared to other similar non-FE sites, e.g. Visitor Centres, Country Parks, Farms, Gardens, Wildlife Attractions or other countryside attractions. The visitor numbers for such attractions are given in the publication 'Sightseeing in the UK 2000', published by the English Tourism Council.

Selection of Other comparable non-FE sites

Sites were selected from this report which fell into the categories of Visitor Centre, Country Park, Farm, Garden, Wildlife Attraction or other countryside attraction. Only the sites which we had used for previous Trends Index reports were included.

Trend at each site and at Visitor Centre and Other sites in each country

For each site, the percentage change is calculated between the visitor numbers in 1999 and those in 2000. These numbers either represent manual counts, analysis of ticket sales, mechanical counters or estimates based on a sample count. The trend at sites in each type of location (Visitor Centre, other site) in each country (Scotland, England, Wales) were combined, by calculating a simple average of the percentage changes for each of the 6 groups.

Trend at All sites and in GB

The overall percentage changes for Visitor Centre and other sites combined (All sites) and each country combined (GB) are estimated by weighting the individual country (England/Scotland/Wales) and site-type (Visitor Centre/Other) percentage changes in proportion to the number of sites in each category.

TRENDS INDEX 1999-2000

Percentage change, valid counts and full year visitor estimates at Visitor Centres and other sites

Visitor Centre sites			Table A1.1			
Forest District	Location	Cat.	Valid months	Valid Total ¹		% change
				1999	2000	
Scottish Borders	Dykescroft	VC	6	1,104	630	-43%
Dornoch	Ferrycroft Cside Centre	C(ME)	6	14,017	10,658	-24%
Galloway	Kirroughtree VC	VC	7	40,071	18,326	-54%
Galloway	Stroan VC	VC	7	83,198	28,558	-66%
Inverness	Glenmore VC	C(ME)	12	69,682	68,380	-2%
Tay	Queens View Shop	C(ME)	8	115,931	122,935	6%
% change 1999-2000 for Visitor Centre in Scotland:						-30.5%

Category key

VC=Visitor Counter, C=Counter, ME=Magic Eye

Notes

1. Total count registered by the counter in the valid months. This represents the number of people recorded passing the counter. No estimate was made for other months that the Visitor Centre was open (some Visitor Centres were not open for 12 months).

Other sites			Table A1.2						
Forest District	Location	Cat.	Valid months	Valid Total ¹		% change	Visitors per count ³	Visitors per year ²	
				1999	2000			1999	2000
Aberfoyle	Strathyre	Veh	12	9,242	1,743	-81%	2.5	23,105	4,356
Aberfoyle	QEFP	Veh	12	26,571	20,153	-24%	2.5	66,428	50,383
Aberfoyle	Ben Venue	Ped	12	16,732	15,872	-5%	1.0	16,732	15,872
Ae	Doach	Veh	6	4,512	3,225	-29%	—	—	—
Ae	Mabie	Ped	7	56,902	52,297	-8%	—	—	—
Scottish Borders	Glentress	Veh	12	27,247	26,368	-3%	2.1	57,219	55,372
Scottish Borders	Cardrona	Veh	12	16,028	10,161	-37%	2.2	35,262	22,353
Buchan	Bin Car Park	Veh	7	24,004	22,967	-4%	—	—	—
Buchan	Back o Bennachie	Veh	7	34,240	18,736	-45%	—	—	—
Buchan	Essons CP	Veh	6	25,951	22,450	-13%	—	—	—
Buchan	Donview East	Veh	8	12,676	11,894	-6%	—	—	—
Buchan	Donview West	Veh	7	2,335	7,195	208%	—	—	—

cont. overleaf

Other sites			Table A1.2 cont						
Forest District	Location	Cat.	Valid months	Valid Total ¹		% change	Visitors per count ³	Visitors per year ²	
				1999	2000			1999	2000
Dornoch	Ferrywood walk	Ped	9	9,621	12,130	26%	—	—	—
Fort Augustus	Dog Falls	Veh(Pn)	12	10,825	8,584	-21%	2.5	27,063	21,460
Fort Augustus	Beinn a'Mheadhoin	Veh(Pn)	12	3,795	3,267	-14%	2.6	9,867	8,494
Fort Augustus	R Affric	Veh(Pn)	11	10,484	11,807	13%	2.6	27,896	31,717
Fort Augustus	Affric CFR Threshold	Veh(ME)	11	26,781	22,823	-15%	2.7	73,526	63,566
Fort Augustus	Otter Hide	Ped	7	20,184	17,825	-12%	1.0	30,972	29,936
Galloway	Kirroughtree	Veh	7	16,020	23,582	47%	—	—	—
Galloway	Stroan Bridge	Veh	7	55,334	23,918	-57%	—	—	—
Galloway	Bruce's Stone	Veh	7	32,251	14,345	-56%	—	—	—
Inverness	Rogie Falls	Ped	12	60,393	56,052	-7%	1.0	60,393	56,052
Kincardine	Kirkhill Main	Veh	12	11,948	19,890	66%	2.0	23,896	39,780
Kincardine	Tyrebagger P	Veh	12	12,077	13,051	8%	1.8	21,739	23,492
Kincardine	Countesswells	Veh	12	70,570	66,936	-5%	1.5	105,855	100,404
Kincardine	Scolty	Veh	10	15,729	20,422	30%	2.4	44,982	57,641
Kincardine	Shooting Greens	Veh	12	8,854	7,341	-17%	2.5	22,135	18,353
Lochaber	Ciste Dubh	Veh(Pn)	8	3,422	3,690	8%	2.5	11,951	12,485
Lochaber	Alt Na Calliche	Veh(Pn)	11	3,275	4,302	31%	2.5	8,498	11,065
Lochaber	Inchree	Ped	11	18,090	25,745	42%	1.0	19,047	26,695
Lorne	Sutherlands Grove	Veh(Pn)	12	9,585	10,007	4%	2.5	23,963	25,018
Moray	Roseisle	Veh	7	11,272	16,603	47%	—	—	—
Moray	Culbin -Wellhill	Veh	9	9,559	10,691	12%	—	—	—
Tay	Glen Doll	P&D	12	22,405	21,401	-4%	2.5	59,713	56,603
Tay	Kilvrecht	Cs	6	3,893	2,069	-47%	—	—	—
Tay	Glendoll	Cs	12	1,328	1,465	10%	—	—	—
Tay	Queens View	P&D	6	22,405	21,401	-4%	—	—	—
% change 1999 - 2000 for other sites in Scotland:						1.1%			

Category key

Veh=Vehicle Counter,Ped=Pedestrian Counter,Pn=Pneumatic,ME=Magic Eye,P&D=Pay and Display,Cs=Campsite

Notes

1. Total count registered by the counter in the valid months. This may represent the number of people or vehicles recorded
2. Estimated number of visitors for the year. See methodology section 3
3. Underlined figures in italics represent estimates. Other figures come from calibration exercises

TRENDS INDEX 1999-2000

Percentage change, valid counts and full year visitor estimates at Visitor Centre and other sites

Visitor Centre Sites			Table A2.1			
Forest District	Location	Cat.	Valid months	Valid Total ¹		% change
				1999	2000	
Kielder	Kielder Castle VC	C (ME)	9	33,248	28,217	-15%
Kielder	Hamsterley VC	C (H)	10	28,938	25,242	-13%
Lakes	Grizedale VC	VC	12	60,580	44,406	-27%
NYM	Dalby VC	VC	7	44,018	44,154	0%
NYM	Pinchinthorpe VC	VC	12	20,661	16,111	-22%
SE England	Queen Elizabeth CP VC	VC	8	173,410	169,249	-2%
West Midlands	Birches Valley FC	VC	12	96,301	89,877	-7%
% change 1999-2000 for Visitor Centre sites in England:						-12.2%

Category key

C=Counter, ME=Magic Eye, H=Hand, VC=Visitor Centre

Notes

1. Total count registered by the counter in the valid months. This represents the number of people recorded passing the counter. No estimate was made for other months that the Visitor Centre was open (some Visitor Centres were not open for 12 months).

Other sites			Table A2.2							
Forest District	Location	Cat.	Valid months	Valid Total ¹		% change	Visitors per count ³	Visitors per year ²		
				1999	2000			1999	2000	
East Anglia	Lynford (Red) Stag	P&D	11	5,726	4,232	-26%	—	—	—	
East Anglia	St Helens	P&D	6	4,976	3,011	-39%	—	—	—	
East Anglia	High Lodge	FDT	11	34,619	39,450	14%	3.0	111,122	127,068	
Forest of Dean	Beechenhurst	Veh	12	76,300	72,919	-4%	2.5	190,750	182,298	
Forest of Dean	Symonds Yat	Veh	12	72,171	70,478	-2%	2.5	180,428	176,195	
Forest of Dean	Beechenhurst	P&D	12	25,197	25,177	0%	2.5	62,993	62,943	
Forest of Dean	Symonds Yat	P&D	12	36,549	32,397	-11%	2.5	91,373	80,993	
Forest of Dean	Cycle Centre	P&D	12	10,819	10,641	-2%	2.5	27,048	26,603	
Kielder	Simonside	Veh	12	8,313	9,439	14%	2.5	20,783	23,598	
Kielder	Hamsterley	Veh	12	72,609	68,970	-5%	2.5	181,523	172,425	
Kielder	Chopwell	Veh	12	38,938	39,961	3%	2.5	97,345	99,903	
Kielder	Hepburn	Veh	12	6,293	5,250	-17%	2.5	15,733	13,125	
Kielder	Kielder Castle	Veh	12	9,548	8,091	-15%	2.9	27,689	23,464	
Kielder	Forest Drive	Veh	12	29,576	29,626	0%	2.8	82,813	82,953	
Kielder	Bull Crag	Veh	6	1,885	1,570	-17%	2.8	10,520	9,626	
Kielder	Kielder Castle CP	P&D	11	6,289	4,917	-22%	2.9	18,693	14,857	
Kielder	Kielder	FDT	12	10,653	8,864	-17%	2.5	26,633	22,160	
Kielder	Hamsterley	FDT	12	35,625	32,596	-9%	2.5	89,063	81,490	
Lakes	Whinlatter Main	Veh	12	28,497	30,056	5%	2.5	71,243	75,140	
Lakes	Noble Knott	Veh	12	3,162	4,289	36%	2.5	7,905	10,723	
Lakes	Whinlatter Main	P&D	12	21,920	17,681	-19%	2.5	54,800	44,203	
Lakes	Grizedale Main	P&D	12	29,395	25,799	-12%	2.5	73,488	64,498	
Lakes	Grizedale Old Hall	P&D	12	8,736	7,651	-12%	2.5	21,840	19,128	
Lakes	Grizedale Kennels	P&D	12	4,640	3,703	-20%	2.5	11,600	9,258	
New Forest	Bolton's Bench	Veh	11	77,824	72,410	-7%	—	—	—	
New Forest	Blackwater	Veh	11	36,256	31,824	-12%	—	—	—	
New Forest	Bolderwood (E)	Veh	9	23,581	20,351	-14%	—	—	—	
New Forest	Bolderwood (W)	Veh	11	43,469	36,455	-16%	—	—	—	
New Forest	Hatchet	Veh	7	33,291	30,474	-8%	—	—	—	
New Forest	Moors Valley	Veh	9	119,691	135,529	13%	—	—	—	
New Forest	Beachern Lane	Cyc	9	44,664	39,474	-12%	—	—	—	
New Forest	Rhinefield Dr.	Cyc	9	15,424	15,510	1%	—	—	—	
New Forest	Denny Route	Cyc	9	13,515	15,863	17%	—	—	—	
New Forest	Denny non-route	Cyc	9	3,142	1,701	-46%	—	—	—	
New Forest	Hampton Ridge	Cyc	9	3,516	6,543	86%	—	—	—	
New Forest	Longslade Bottom	Cyc	9	16,293	15,508	-5%	—	—	—	

cont. overleaf

Other sites			Table A2.2 cont.						
Forest District	Site	Cat.	Valid months	Valid Total ¹		% change	Visitors per count ³	Visitors per year ²	
				1999	2000			1999	2000
North York Moors	Pexton	Veh	12	205,026	206,282	1%	2.5	512,565	515,705
North York Moors	Bickley	Veh	12	89,126	91,703	3%	2.5	222,815	229,258
North York Moors	Dalby	Veh	12	185,959	164,535	-12%	2.5	464,898	411,338
North York Moors	May Beck	Veh	12	15,960	13,337	-16%	2.5	39,900	33,343
North York Moors	Clay Bank	Veh	12	38,989	37,656	-3%	2.5	97,473	94,140
North York Moors	Guisborough	Veh	12	50,484	50,142	-1%	2.5	126,210	125,355
North York Moors	Newton Dale	Veh	12	29,311	25,545	-13%	2.5	73,278	63,863
North York Moors	Newtondale	FDT	12	19,271	20,995	9%	2.5	48,178	52,488
North York Moors	Dalby	FDT	12	101,984	100,809	-1%	2.5	254,960	252,023
North York Moors	Newtondale	FDT	6	4,862	3,671	-24%	—	—	—
North York Moors	Dalby	FDT	12	52,103	52,888	2%	2.5	130,258	132,220
Sherwood	Forest Centre	Veh	6	34,496	35,598	3%	2.5	183,658	227,795
Sherwood	Forest Centre	P&D	12	38,152	40,137	5%	2.5	95,380	100,343
Sherwood	Blidworth Bottoms	Veh	9	46,318	47,934	3%	2.5	193,473	233,597
Sherwood	Thieves Wood	Veh	12	90,284	120,786	34%	2.5	225,710	301,965
Sherwood	Longdale Lane	Veh	9	33,087	17,932	-46%	2.5	126,318	101,126
Sherwood	Nomans Hill	Veh	6	36,087	46,513	29%	2.5	199,008	248,044
Sherwood	Rigg Lane (Tower)	Veh	12	58,540	66,509	14%	2.5	146,350	166,273
Sherwood	Derbyshire Bridge	Veh	7	21,901	44,762	104%	2.5	89,491	148,711
Sherwood	The Street	Veh	10	48,358	88,724	83%	2.5	157,273	255,327
West Midlands	Cannock	Veh	8	35,017	44,319	27%	2.5	117,608	143,425
West Midlands	Wyre	P&D	12	26,114	28,620	10%	2.5	65,285	71,550
Westonbirt	Westonbirt	Ped	12	207,476	156,773	-24%	1.0	207,476	156,773
% change 1999-2000 for other sites in England:						0.1%			

Category key

Veh=Vehicle Counter, P&D=Pay and Display, Ped=Pedestrian counter, FDT=Forest Drive Tickets, Cyc=Cycle

Notes

1. Total count registered by the counter in the valid months. This may represent the number of people or vehicles recorded
2. Estimated number of visitors for the year. See methodology section 3
3. Underlined figures in italics represent estimates. Other figures come from calibration exercises

TRENDS INDEX 1999-2000

Percentage change, valid counts and full year visitor estimates at Visitor Centres and other sites

Visitor Centre sites			Table A3.1			
Forest District	Location	Cat.	Valid Months	Valid Total ¹		% change
				1999	2000	
Canolbarth	Nant yr Arian VC	VC	10	30,370	28,105	-7%
Dolgellau	Coed Y Brenin VC	VC	12	47,714	34,129	-28%
Dolgellau	Coed y Brenin cafe	VC	12	45,158	40,434	-10%
% change 1999-2000 for Visitor Centre sites in Wales:						-15.5%

Notes

1. Total registered by the counter in the valid months. This represents the number of people recorded passing the counter. No estimate was made for other months that the Visitor Centre was open (some Visitor Centre were not open for 12 months).

Other sites						Table A3.2			
Forest District	Location	Cat.	Valid months	Valid Total ¹		% change	Visitors per count ³	Visitors per year ²	
				1999	2000			1999	2000
Canolbarth	Nant yr Arian	Veh(Pn)	9	15930	18523	16%	3.1	77,959	87,833
Canolbarth	Black Covert	Veh(Pn)	6	3699	4127	12%	2.5	17,250	20,430
Canolbarth	The Arch	Veh(Pn)	9	4938	7615	54%	2.5	15,723	23,651
Canolbarth	Ty'n Y Bedw	Veh(Pn)	7	1526	1234	-19%	2.5	5,384	4,995
Dolgellau	Coed y Brenin	Veh(Pn)	9	23673	17910	-24%	2.5	86,578	66,139
Dolgellau	Coed Y Brenin VC	P&D	11	17106	17665	3%	2.5	43,190	44,641
Dolgellau	M/B Trail	Cyc	12	14319	18,758	31%	1.0	14,319	18,758
Llanwrst	Newborough Beach	Veh(Pn)	12	56568	50786	-10%	2.9	164,047	147,279
Llanwrst	Newb-Llyn Parc Mawr	P&D	10	1600	3390	112%	2.2	4,422	8,690
Llanwrst	Lyn Geirionydd	P&D	12	3376	4296	27%	3.1	10,466	13,318
Llanwrst	Caen y Coed	P&D	11	3047	2017	-34%	2.7	8,303	5,635
Llanwrst	Llyn Crafnant	P&D	12	2631	3329	27%	2.7	7,104	8,988
Llanwrst	Coed Aber	P&D	11	4759	5855	23%	3.2	15,678	19,856
Llanwrst	Moel Famau	P&D	12	11533	13623	18%	2.4	27,679	32,695
% change 1999-2000 of other sites in Wales:						16.8%			

Category key

VC=Visitor Counter, Veh=Vehicle Counter, Pn=Pneumatic, P&D=Pay and Display Tickets, Cyc=Cycle Counter

Notes

1. Total count registered by the counter in the valid months. This may represent the number of people or vehicles recorded
2. Estimated number of visitors for the year. See methodology section 3
3. Underlined figures in italics represent estimates. Other figures come from calibration exercises