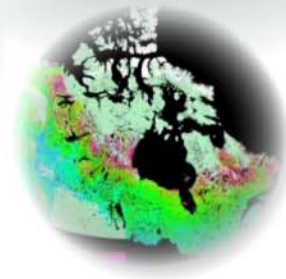
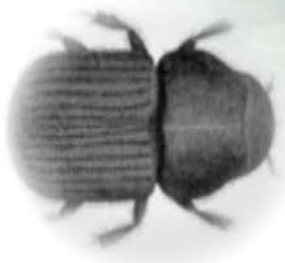




Natural Resources
Canada
Canadian Forest
Service

Ressources naturelles
Canada
Service canadien
des forêts



SPATIAL STOCHASTIC MODELING TO MAP INTRODUCTION AND SPREAD RISKS FOR INVASIVE SPECIES: CONCEPTS AND DATA NEEDS

Shepherdstown, WV, May 27, 2008

Denys Yemshanov (CFS), Frank Koch (NCSU/USFS-FHM),
Dan McKenney (CFS), Marla Downing (USFS-FHTET)
and Frank Sapiro (USFS-FHTET)

Natural Resources Canada, Canadian Forest Service

dyemshan@nrcan.gc.ca



Natural Resources
Canada
Canadian Forest
Service

Ressources naturelles
Canada
Service canadien
des forêts

Risk



- Risk can be defined as the occurrence probability for an undesired event, along with some evaluation of the consequences of the event (Kaplan and Garrick 1981)
- Knight (1921):
Risk is a probabilistically measurable uncertainty
- Risk in engineering:
 - the probability of event \times losses per accident
- Risk in information security: A function of three variables:
 - the probability that there is a threat
 - the probability that there are any vulnerabilities
 - the potential impact

Invasive species case:

Our aim to include **both** the probability of invasive species occurrence and the impact

Here we're looking at probabilities of introduction, population establishment and host damage



Natural Resources
Canada
Canadian Forest
Service

Ressources naturelles
Canada
Service canadien
des forêts

Our approach

Integrated spatial 2-D discrete modelling framework:

- **Entry model** – simulates species entries with marine imports
- **Spread model** – projects the path of the outbreak in space and time
- **Host resource distribution and growth** – specifies how much host resource, where, and how quickly it could regenerate
- **Impact model** - simulates establishments of new populations
- evaluates the susceptibility of host resource

This study:

- A collaborative effort between the Canadian Forest Service, NC State University and Forest Health Technology Enterprise Team (USFS-FHTET)
- Uses *Sirex noctilio* as a example
- Uses the Forest Bioeconomic Model (CFS-FBM) to simulate entry, invasion and impact
- Generates integrated risk maps via multiple stochastic simulations of “entry-spread-establishment” events
- Integrates US and Canadian data
(i.e., land base, ecoregions, ports of entry, host maps, growth and yield data)



Establishment and spread

Travelling wave model – adapted from Sharov and Liebhold (1998)

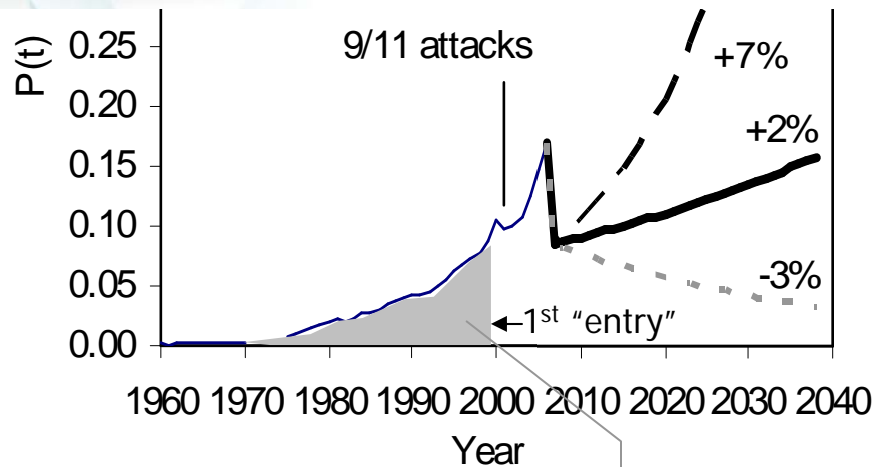
- Population model – geometric growth rate with a maximum carrying capacity
- Dispersal kernel – $f(x) = p_0/(a + bx^c)$, for $x < x_{\max}$ and $f(x) = 0$ for $x \geq x_{\max}$
- Survival and establishment: age-dependent pine susceptibility model

Data assumptions

- Maximum spread rate – 50 km /year
- Pine susceptibility ratings – FHTET ranks (USFS FHTET 2007)
- Initial *Sirex noctilio* infestations: (1) 2006 CFS-CFIA-APHIS surveys
(2) stochastic entry model outputs
- Pine volume map: CFS CanFI (Canada) and USFS FIA databases (US)
- Host mapping method: geostatistical (US), stochastic assignment (Canada)
- Pine growth assumptions: CFS Bernier and Ung model (Canada)
USFS Forest Vegetation Simulator (FVS) model (US)



“Successful” entry



$$\int_{T_0}^{T_{entry}} P(t) dt = 1$$

$P(2006) \approx 0.172$
(for *S. noctilio* in US and Canada)

Proxy data used to define the probability of the successful entry with establishment, $P(t)$:

International marine import stats:

- US Census trade statistics (1960-2006)
- StatsCan data (1971-2007)

$P(t)$ can be found numerically - **IF** the date of the first entry is known

Impact of new wood packaging rules in ISPM-15 (FAO-IPPC 2006) after 2006:

- “High-risk” scenario: $\Delta P(t) = +7\%/year$
- “Medium” risk : $\Delta P(t) = +2\%/year$
- “Low” risk : $P(t) = -3\%/year$

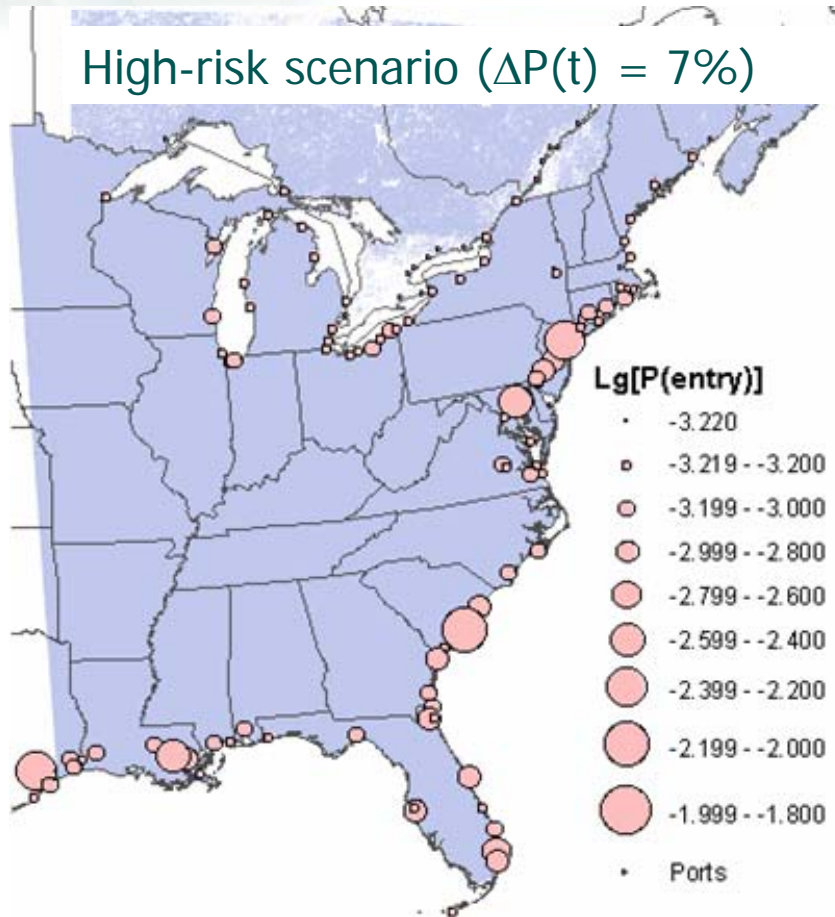


Natural Resources
Canada
Canadian Forest
Service

Ressources naturelles
Canada
Service canadien
des forêts

Local entry potential

High-risk scenario ($\Delta P(t) = 7\%$)



Partitioning $P(t)$ for each port: $\sum_{x=1}^N W_{x(t)} = P(t)$

Calculating local entry potential, $W_{x(t)}$ from:

- US Army Corps of Engineers foreign cargo imports database
- StatsCan "Shipping in Canada" database
- Selecting only commodities and countries of origin that may have *S. noctilio*

Rescaling the original tonnage data, $v_{x(t)}$:

$$W_{x(t)} = 10^{-[k_1 / (1 + k_2 \cdot \exp[-k_3 \cdot \lg(V_{x(t)})])]}$$

where $V_{x(t)} = v_{x(t)} / \sum_{x=1}^N v_{x(t)}$

$W_{x(t)}$ is then used to simulate entry events



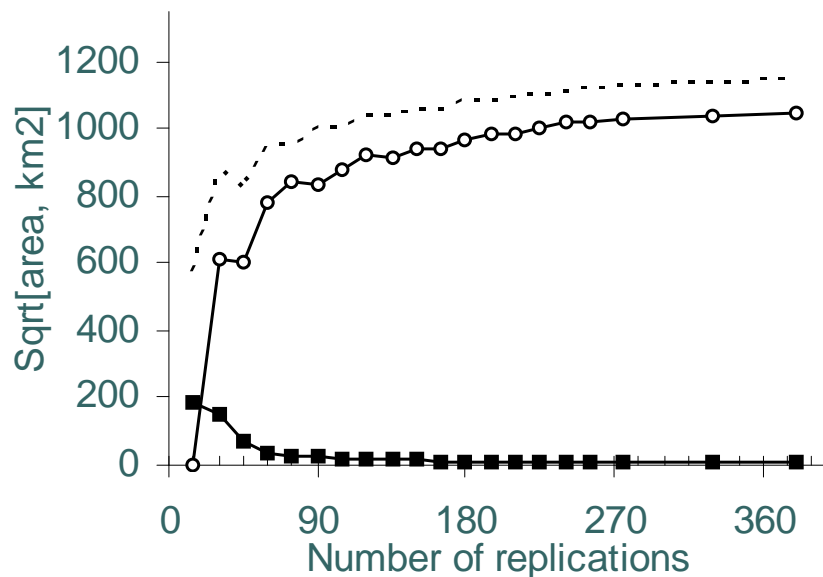
Natural Resources
Canada
Canadian Forest
Service

Ressources naturelles
Canada
Service canadien
des forêts

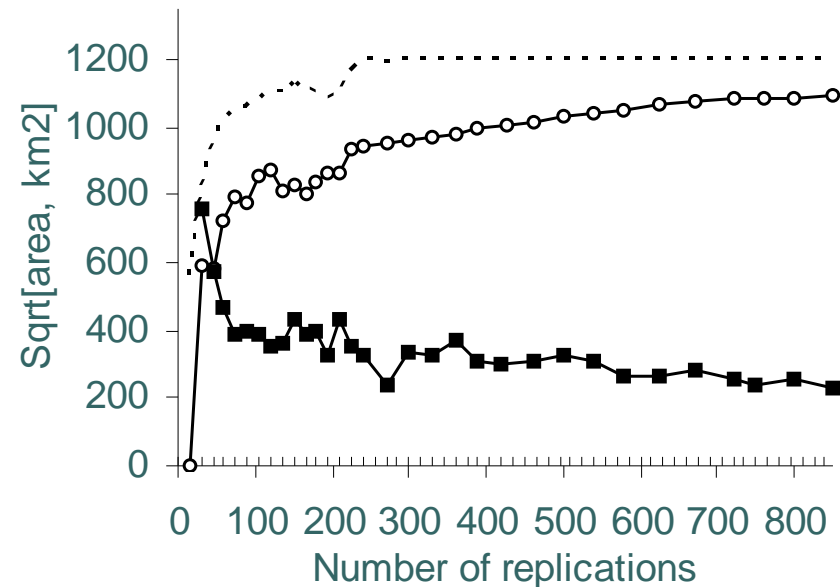
Spatial extent and the number of replications

- Spatial extent - ~4 million 1-km² map cells with pine (eastern US and Canada)
- 300-900 replications per scenario - computationally intensive!
- Lower-probability scenarios = more replications

High-risk scenario ($\Delta P(t) = 7\%/yr.$)



Low-risk scenario ($\Delta P(t) = -3\%/yr.$)



- Areas with $p < 0.1$
- Sum of replication-to-replication differences in p values
- Low-uncertainty areas with the $\sigma(p)$ values < 0.2



Risk and uncertainty metrics

“Risk”:

The **probability** of *S. noctilio* establishment, \mathbf{p} ,
in a minimum area, \mathbf{i} , over a forecast horizon, \mathbf{T}

- Fits to Kaplan and Garrick’s (1981) definition
- Depends on the spatial resolution and the forecast horizon

“Uncertainty”: **Standard deviation** of \mathbf{p} , $\sigma(\mathbf{p})$

Binary entropy of \mathbf{p} :

$$H(\mathbf{p}) = -\mathbf{p} \log_2 \mathbf{p} - (1 - \mathbf{p}) \log_2(1 - \mathbf{p})$$

This study assesses only the risks of relatively large infestations
(i.e., with populations covering 1 km² or larger)



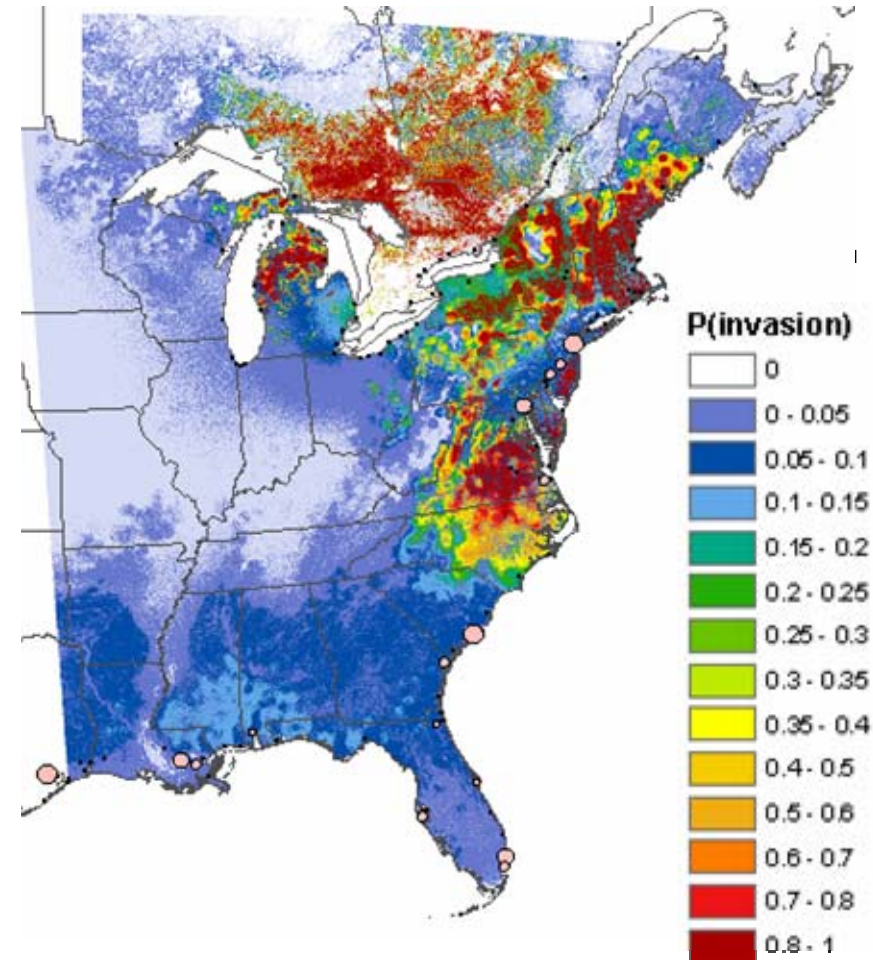
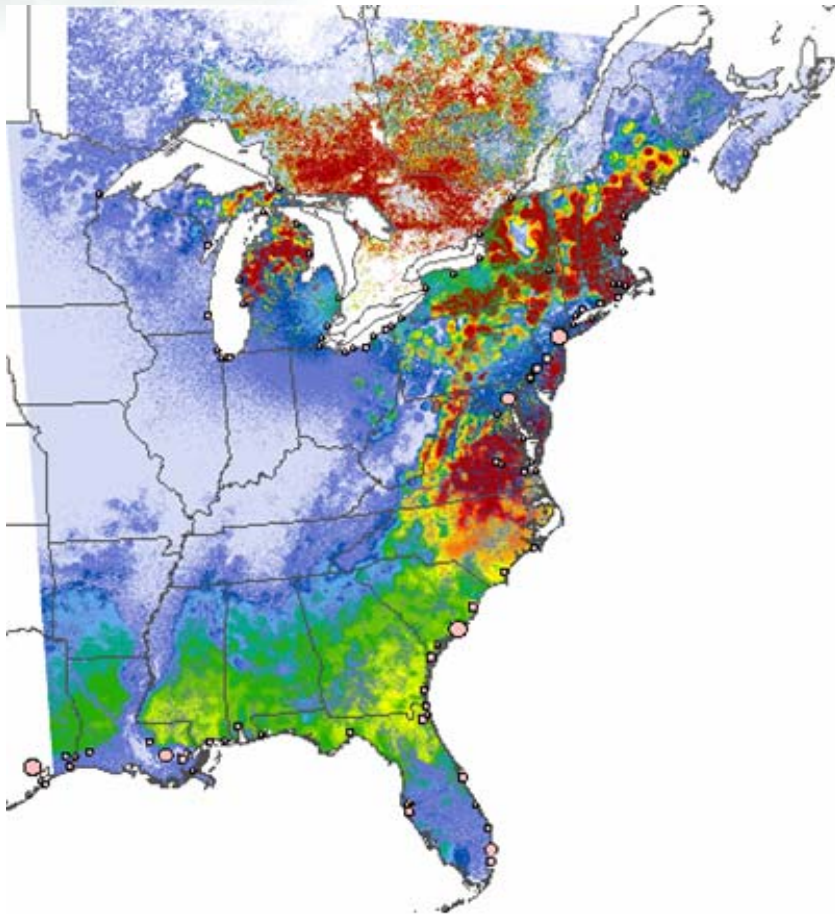
Natural Resources
Canada
Canadian Forest
Service

Ressources naturelles
Canada
Service canadien
des forêts

Risk maps

High-risk scenario, $\Delta P(t) = 7\%$

Low-risk scenario, $\Delta P(t) = -3\%$



Risk of *S. noctilio* infestation, p , 30-year horizon



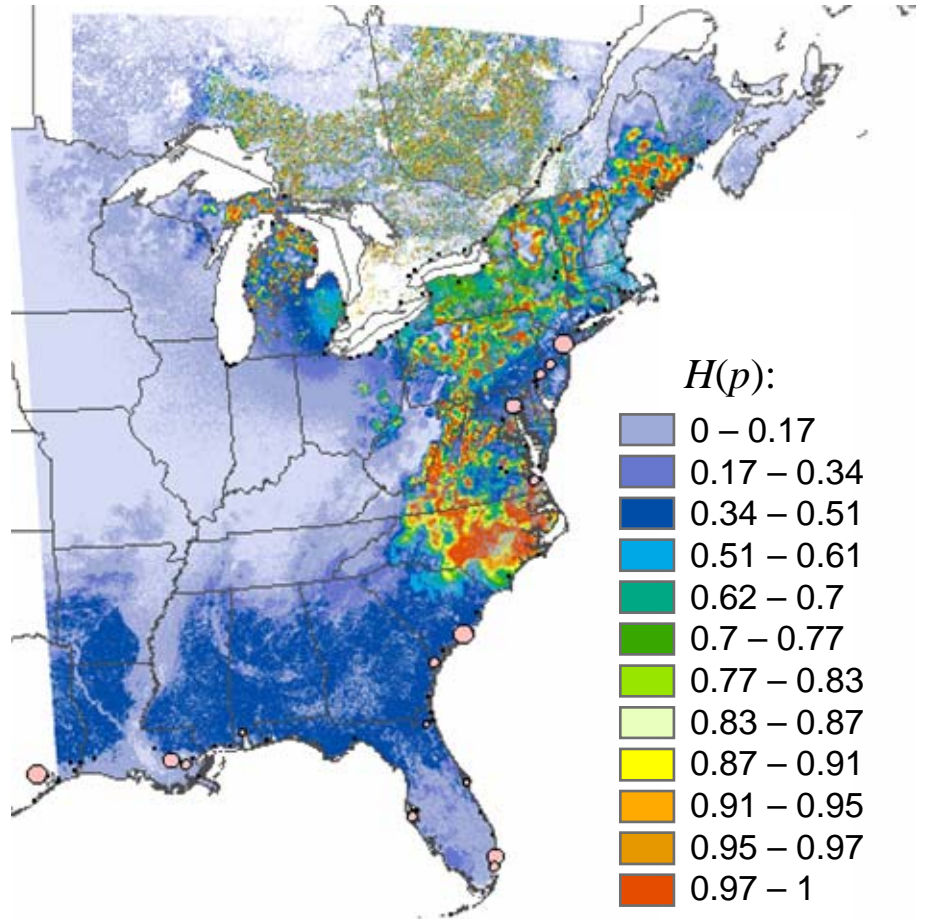
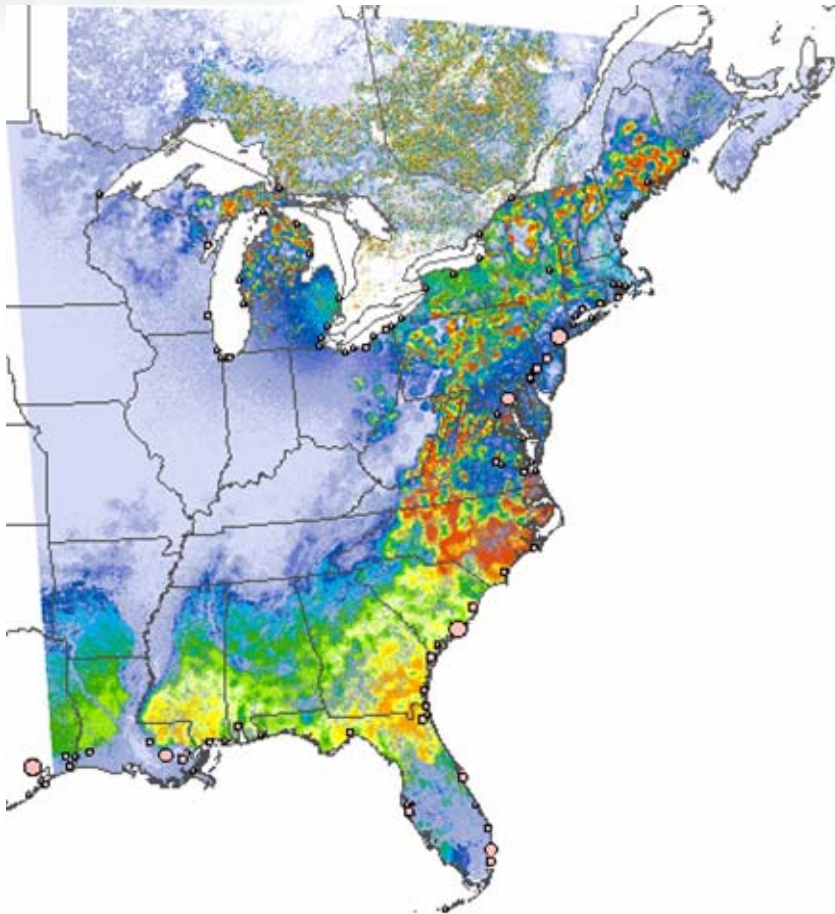
Natural Resources
Canada
Canadian Forest
Service

Ressources naturelles
Canada
Service canadien
des forêts

Uncertainty maps

High-risk scenario, $\Delta P(t) = 7\%$

Low-risk scenario, $\Delta P(t) = -3\%$



Binary entropy, $H(p)$, 30-year horizon



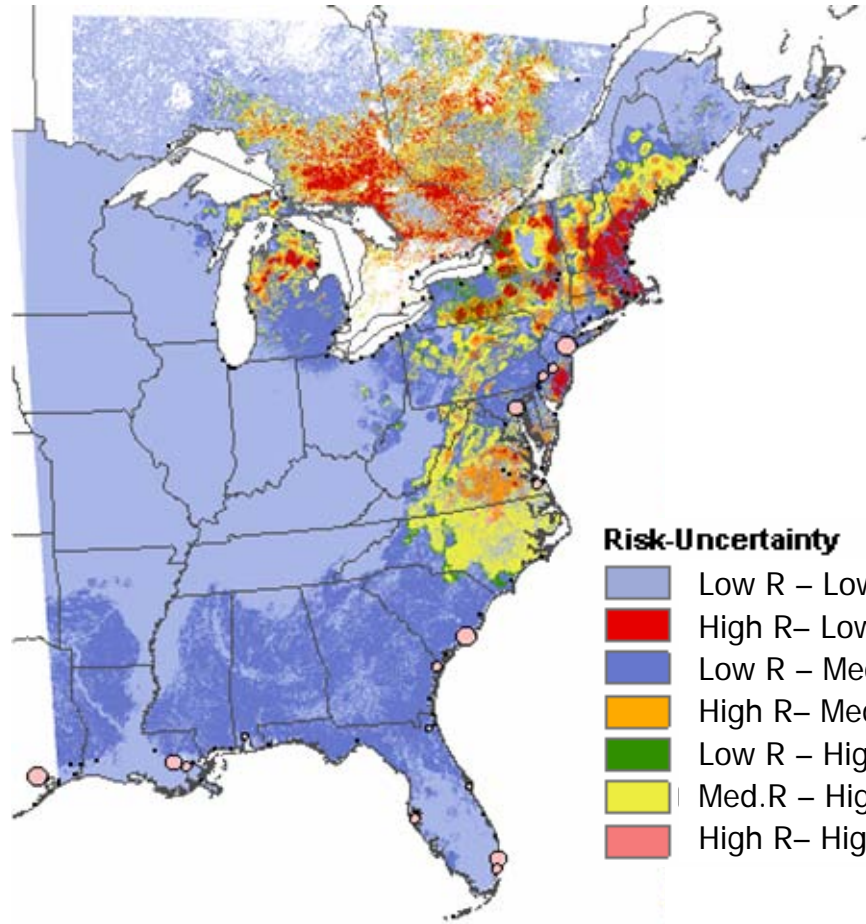
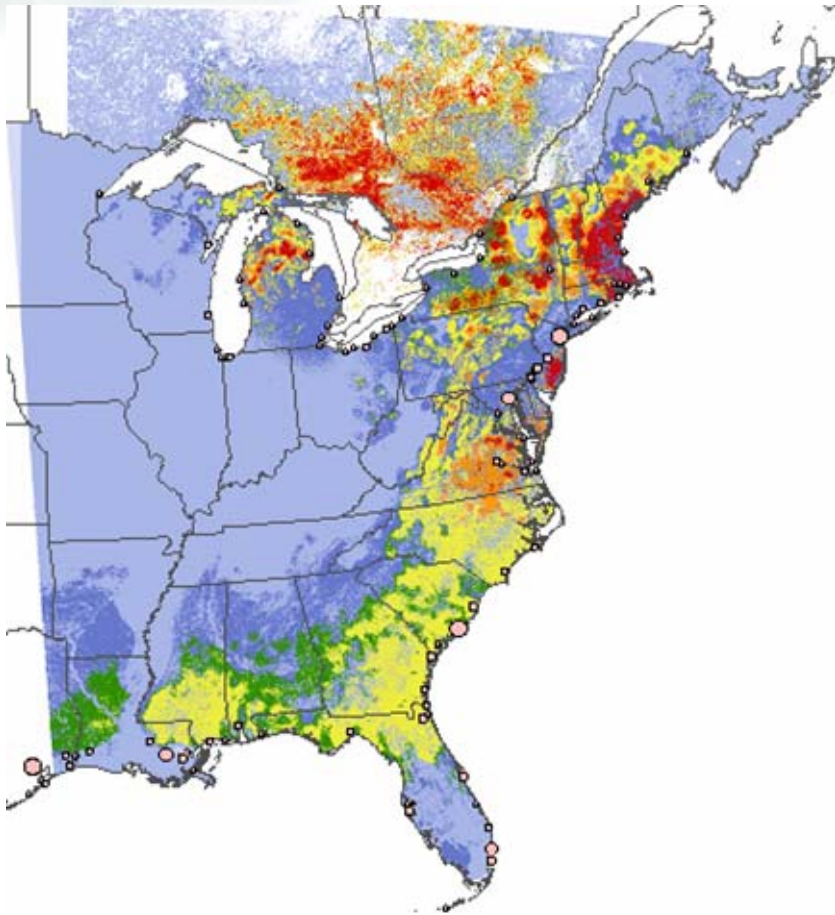
Natural Resources
Canada
Canadian Forest
Service

Ressources naturelles
Canada
Service canadien
des forêts

Risk - Uncertainty maps

High-risk scenario, $\Delta P(t) = 7\%$

Low-risk scenario, $\Delta P(t) = -3\%$



Risk – uncertainty classes, 30-year horizon



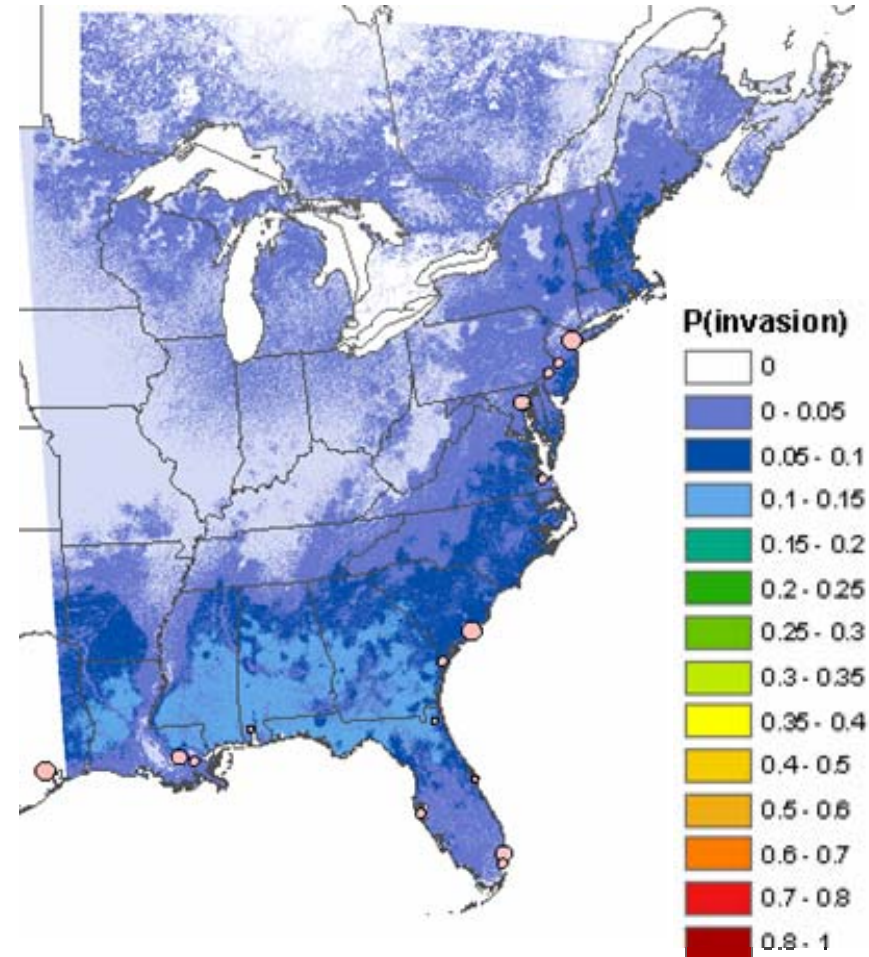
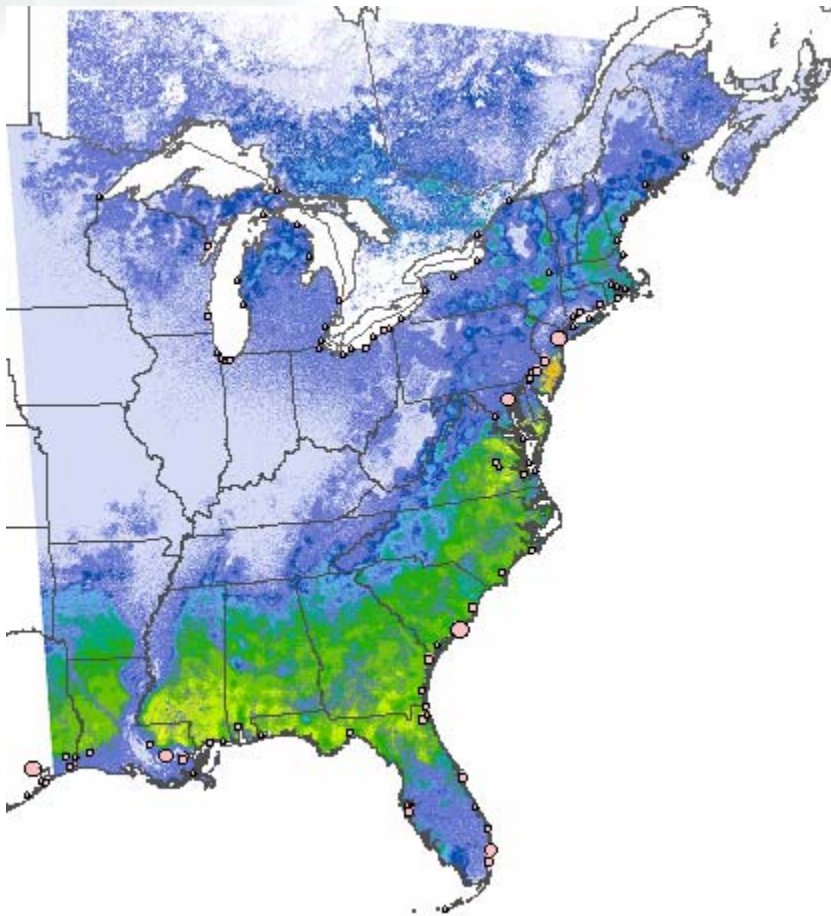
Natural Resources
Canada
Canadian Forest
Service

Ressources naturelles
Canada
Service canadien
des forêts

Risk maps: Ports only

High-risk scenario, $\Delta P(t) = 7\%$

Low-risk scenario, $\Delta P(t) = -3\%$



Risk of *S. noctilio* infestation, p , 30-year horizon



Natural Resources
Canada
Canadian Forest
Service

Ressources naturelles
Canada
Service canadien
des forêts

Conclusions

- A “single” product/depiction
- Attempts to quantify the uncertainties of the risk estimates
- Accounts for multiple entries and spatial dependencies
- Good potential to explore other entry models
(i.e., network, transport pathways, in-land entries)
- Standardized outputs – easier to compare different species and scenarios
- Still a lot of work ahead:
 - Finding better proxies of the entry potential and the impact of the IPPC compliance standards (interceptions?)
 - Assessing entry potential from inland locations
 - Testing species of concern not yet detected in Canada and US
 - Standardizing US and Canadian data preparation approaches



Natural Resources
Canada
Canadian Forest
Service

Ressources naturelles
Canada
Service canadien
des forêts

Acknowledgements:

P. de Groot, Canadian Forest Service

D. Haugen, USDA Forest Service

L. R. David, USDA-FS Forest Health Technology Enterprise Team

References:

- FAO-IPPC, 2006. International Standards for Phytosanitary Measures. ISPM No.15 (2002).
Guidelines for regulating wood packaging material in international trade.
FAO-IPPC, Rome, pp.174-183.
- FHTET (Forest Health Technology Enterprise Team) 2007. Sirex Woodwasp –
Sirex noctilio. Host species susceptibility. Available from:
http://www.fs.fed.us/foresthealth/technology/pdfs/host_species_susceptibility.pdf
- Kaplan, S., and Garrick, B.J. 1981. *Risk Analysis* **1**: 11–27.
- Knight, F.H., 1921. Risk, Uncertainty and Profit. Houghton Mifflin Co.
- Sharov, A.A., and Liebhold, A.M. 1998. *Ecological Applications* **8**: 1170–1179.