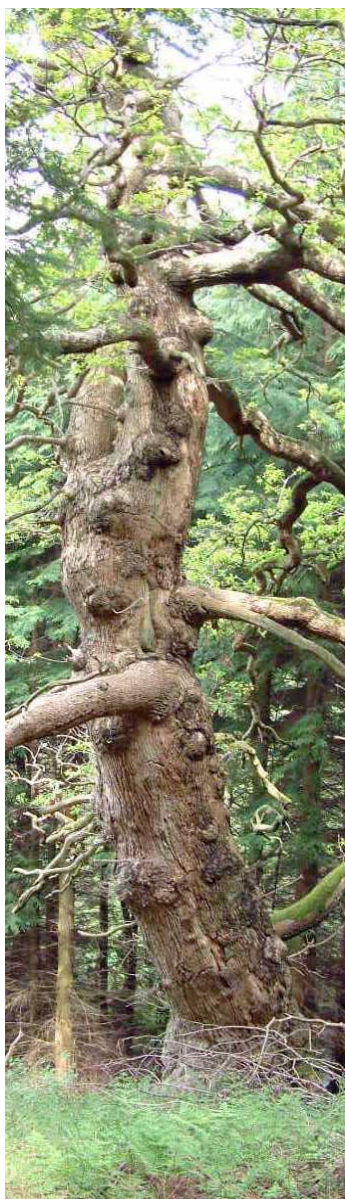


General Information

About the woods and forests managed by the Forestry Commission from the Tees to the Humber



Forestry Commission North York Moors cares for 21471.9 hectares of land (equivalent to more than 42,000 football pitches) between the Tees and the Humber.

Woods and forests are managed to meet the demands placed on them by the Government's Forest Policy 'A strategy for England's Woods, Trees and Forests' published in 2007.

A BRIEF HISTORY.

Many areas in North Yorkshire were deforested during the early Bronze Age. These people left signs scattered through the region's woodlands but particularly the large forests of Dalby, Langdale, Harwood Dale, Broxa and Wykeham. Later Iron Age settlements were in Wykeham and Broxa Forests. The term forest actually relates to hunting areas not just woodland. Around 1106 King Henry I declared much of land between Pickering, Scarborough and Whitby to be a Royal Hunting Forest this included the present day Dalby Forest and other woodland in the area. The church was also a powerful landowner and Bishop Wood near Selby although managed by the Forestry Commission still belongs to the Church Commissioners. Only 10% of the present forest area is old woodland or on the site of old woodland, everything else was either moorland or farmland. Some places, particularly around Dalby Forest were used to rear tens of thousands of rabbits in specially constructed warrens. After the 1st World War hardly a tree was left standing that could be used in manufacturing and mining. The Government set up the Forestry Commission to care for Britain's remaining woods and create lots of new ones as a strategic timber reserve. The first trees in Dalby Forest were planted in the early 1920s. The Forestry Commission has more than 230 protected monuments in its care in the region as well as many other features.

ORGANISATION AND STAFF

The management team for Forestry Commission North York Moors, is headed by a Forest Management Director. The Director is assisted by an Operations and Planning manager specialising in the care of the growing trees, a Recreation and Environment Manager caring for public access and wildlife, and a Business Manager looking after the visitor centre in Dalby Forest. Specialist research, nursery management teams and regional support staff are also based in the area.

Forest Management Director							N ^o	1
Operations & Planning Manager				Dalby Business Manager	Recreation & Environment Manager			3
Foresters (4)	Forester (Planning)	Office Manager	Project Manager		Recreation Manager	Ranger Manager	Biodiversity Officer	10
Works Supervisors (4)	Operational Planning Supervisor				Recreation Rangers (3)	Wildlife Rangers (4)		12
Forest Craftsmen (11)		Admin, ⁿ Team (7)		Visitor Centre Assistants (7)	Recreation Craftsmen & Ranger Asst ^t (4)			29
Sandwich Year Student (1)		Cleaner (1)			Dalby Toll & Barrier Team (3)			5

Forestry Commission Team, North York Moors - Total 60

NB. The table shows the total staff numbers employed in August 2007. Some staff especially in recreation and administration are part time or seasonal employees. Nursery, research and regional support staff are not shown.

EMPLOYMENT IN THE WIDER COMMUNITY

In addition to its own staff the Forestry Commission provides employment for a varying number of forestry, engineering and haulage contractors throughout Yorkshire and Humber Region.

Dalby and Cropton Forest have highly developed public access. Business partners supporting accommodation, activities and services in these forests currently provide full or part-time employment for around sixty people.

The presence of large-scale forests in the North York Moors National Park has a measurable impact on the local economy and employment. A ready supply of timber has seen the establishment of a highly successful, privately run, sawmill. Accommodation providers benefit from having easy-access land and activities on the doorstep. Local shops and other businesses benefit through the passing trade created by the large number of visitors to these forests.

TREES AND FORESTS

Tree Species (Conifers)	Area (ha)	Tree Species (Broadleaves)	Area (ha)
Corsican Pine	473	Alder	22
Douglas Fir	526	Ash	35
European Larch	348	Beech	303
Grand Fir	24	Birch	231
Hybrid Larch	834	Mixed Broadleaves	1226
Japanese Larch	2090	Oak	263
Lawson Cypress	9	Poplar	50
Lodgepole Pine	1386	Sycamore	222
Mixed Conifer	337		
Noble Fir	9	Open space forms an increasingly important part of forest management. This total includes, heath and grass, agricultural and recreational land but not roads and rides.	
Norway Spruce	440		
Scots Pine	3727		
Sitka Spruce	4565		
Western Hemlock	157		
Western Red Cedar	57		
			4214

There is public access to a large part of these woods and forests	Area (ha)	These forests have limited or no public access**.	Area (ha)
Allerthorpe	148.3	Arncliffe	173.4
Bishop Wood	340.7	Bransdale	203.4
Boltby	632.1	Coate Moor	155.0
Broxa	730.0	Deer Park	312.1
Coatham Wood	198.6	Eastmoor/Riccardale	1100.9
Cropton	3662.2	Faceby	61.4
Dalby	3597.6	Gilling	589.1
Guisborough	478.2	Goathland	69.7
Hagg Wood	81.0	Sand Hutton	178.2
Harwood Dale	747.6	Wass Moor/Pry Rigg	663.4
Ingleby Greenhow	552.6	Bumble Wood	264.4
Kilburn/Oldstead	546.8	Wykeham	1117.0
Langdale	3008.7		
Silton	461.9	other woods	80.5
Sneaton	904.7		
South Burdon	81.3		
Stainburn	215.5		
Wheldrake	115.6	Total area (ha).	21471.9

* ha A hectare. 1 hectare equals just under 2.5 acres.

** This is usually because the Forestry Commission is a tenant and the landowner has reserved the access rights. Bumble Wood & Goathland are freehold but the previous owner has reserved rights until 2020.



CLIMATE

Across the region the altitude of Forestry Commission woodlands varies between 5m at Bishop Wood, near Selby to 244m at the head of Bransdale. In general the higher the altitude the more extreme the climate. High winds and exposure to salt laden air from the North Sea can cause particular problems to foresters trying to manage the growing trees. The average rainfall is between 66cm and 91cm a year.

GEOLOGY & SOILS

Whilst the low-lying woods in the Vale of York and the lower Tees Valley are situated on riverine, lake-bed and glacial deposits most woods are located on sedimentary rocks of the Jurassic period. These give rise to a wide range of soil types from lime-rich rendzina and brown earth to acid peats, gleys (waterlogged clays) and iron pans.

Of particular interest to geologists are the glacial meltwater channels that give the forests of Broxa, Wykeham and Dalby their distinctive valleys. The largest meltwater channel of all is Newtondale on the edge of Cropton Forest, possibly the most important (and impressive) feature of its type in England.

Dalby Forest is also noted for the lime rich springs in Deepdale. Lime-laden water comes to the surface and rapidly evaporates causing lime to be deposited in layers on anything in its path, eventually building up into beds of tufa or travertines.

The North East Yorkshire Geology Trust is a very active group in the area and can offer help and advice. For more details see their website,

<http://www.neyorksgeologytrust.com>

or telephone: 01947 881 000

PLANTING & SILVICULTURE

In NYM, the total restock¹ area is 160 hectares (ha) and is made up as follows :-

141 ha restocked with nursery grown plants (138ha conifer, 3 ha broadleaves)
19 ha natural regeneration broadleaves (for native broadleaved restoration sites)

Approximately 400 000 trees are required annually from Forestry Commission nurseries at Wykeham and Delamere. Most of the trees planted are 2 years old, grown on from seedlings.

Sitka spruce is the main species planted (approx 40%) with larch (25-30%) and Scots pine (approx 20%). Douglas fir and Norway spruce are also planted in smaller quantities. Some Norway spruce are specially grown and managed as Christmas trees for sale through FC visitor centres across the UK.

Approximately 90% of the restocked area receives ground preparation. On the drier sites, a scarifier is used behind a large tractor to create a weed free trace in the soil where the tree can be planted. For wetter sites, excavators are used to create raised mounds of soil for the trees to be planted on. These warm up quicker in the spring and create good conditions for tree growth and survival. All trees are hand planted by staff and contractors who transport the trees in specially designed planting bags.

Newly planted trees are subject to attack from browsing mammals (deer, rabbits, hares, voles) and insect (pine weevil). Weeds need to be controlled (either chemically or mechanically) to prevent trees dying through lack of light, water or nutrients. Drought, frost and drying easterly winds in the winter are other threats to newly planted trees before the roots become well established.

In the early years, trees that die are replaced. Approximately 50 000 replacement trees are required each year. The aim is to achieve a minimum of 2500 trees per hectare at the age of establishment, 5 years after planting².

Where site conditions allow (not too windy or exposed, good soils) the forest is managed by continuous cover rather than clearfelling. Here, natural regeneration of conifers is encouraged utilising seed from the mature trees, gradually opened up to the light by regular thinning.

Not all areas where trees are clearfelled are replanted. Forest Design Plans, the main tool for managing forests incorporate open space associated with the creation of naturalised habitats, habitat networks and the delivery of biodiversity action plan targets.

¹ Restock/restocking Replacing trees on sites where tree removal has taken place.

² On areas where a timber harvest is the main objective.

THE TREE HARVEST

Forestry Commission North York moors has 18504 hectares of tree-covered land. About 90% of this area is used to produce a crop of trees for timber production. Timber is harvested by a combination of clearfelling (complete tree removal from a site) and thinning (removing a proportion of the trees to give more growing space to the remaining crop).

The following table shows the forecast of production from thinning and felling until the year 2016.

Period	Thinning (m ³)	Felling (m ³)	Total (m ³)
2007 – 2011	27000	95000	122000
2012 – 2016	29000	108000	137000

NB. A cubic metre of freshly felled softwood is the equivalent of 0.93 tonne.

All timber managed by Forestry Commission North York Moors is harvested by contractors. Most timber is sold standing to the merchant and contractors, however some is sold at the roadside i.e. already cut by contractors hired by the Forestry Commission.



MARKETING THE TIMBER

Sawlogs (i.e. construction timber, planks and boards)	65%
Small roundwood (i.e. chipwood* and fencing material)	30%
Miscellaneous (i.e. firewood)	5%

Over 90% of the trees are felled by mechanical harvesters. The rest are felled manually by chainsaw. Timber is extracted using forwarders except on the steeper slopes where skidder extraction is preferred. (Skidders drag whole tree lengths along the ground)

*Chipwood includes 'bio-fuel' for electricity generation at power stations and local heat schemes.

RECREATION

All the woodlands owned by the Forestry Commission (please refer to the Trees and Forests section) are dedicated under the Countryside and Rights of Way Act (CROW) and the public are welcome to walk in these woodlands. In the more popular woodlands, such as Dalby Forest, Guisborough Forest, Kilburn Wood and Cropton Forest, you will find waymarked trails to follow. The Forestry Commission grants horse riders and pedal cyclists permissive access in these woodlands. Under CROW we can close the forests if we need to restrict public access and this is used for events such as car rallies where there is a high risk to the public. You will also see CROW closures for harvesting operations. We aim to keep these closures to a minimum period.

The Rangers deliver an Education Service, offering activities such as shelter building, orienteering and stream studies to school and other groups of varying ages. All the activities are linked into the National Curriculum and cover several key stages. Activities can be tailor-made to suit a group's requirements.

The Rangers also deliver the 'What's On' programme, which includes varied events from Arty Parties to Bushcraft, Tai Chi to badger watching. We aim to cover many topics of interest from wildlife and nature to the working forest, and popular events include Halloween and Father Christmas. There is hopefully something for everyone throughout the year.

The forests play host to many varied events including car rallies, motorbike enduro's, husky races and the Forest Tour when the Forestry Commission hosts up to three open-air concerts at Adderstone Field in Dalby Forest.

We work closely with the 'Friends of' groups to improve the forests for visitors and these groups help to fund improvements in the forest.

Our aim is for people to enjoy the outdoors and benefit from the forest environment. Activities include walking and cycling from the easy to the extreme, picnicking, adventure and play. More than 350 thousand people visit Dalby Forest each year and there are thought to be between 1.5 and 2 million visits to all Forestry Commission woodland between the Rivers Tees and Humber.

activewoods
naturally good for you

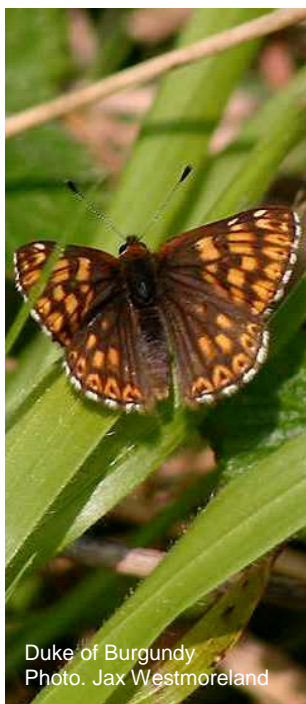
CONSERVATION

As the nation's largest landowner the Forestry Commission's management of the historical and natural heritage in its care is extremely important. The forests of North Yorkshire have the most important assemblage of Bronze Age structures on the Commission's estate in England. The wildlife of the forests vary as the estate covers habitats from upland heath, lime rich grasslands, and ancient semi-natural woodland. Many features and species have statutory protection.



Thieves Dikes, a Scheduled Monument in Broxa Forest

Between the Rivers Tees and Humber the Forestry Commission manages more than 2000 sites of historical interest from 4,500 year old Neolithic burial sites to 2nd World War military structures. Many sites are regarded as being of national importance and of these around two hundred and thirty have been designated as Scheduled Monuments giving them statutory protection.



Duke of Burgundy
Photo. Jax Westmoreland

Environmental protection begins at a landscape scale and many of the region's forests are within protected landscapes especially the North York Moors National Park. Landscape scale change to provide environmental benefits in forests is being achieved through the establishment of habitat networks that allow species to spread through the landscape. The Forestry Commission cares for 17 Sites of Special Scientific Interest (SSSI), two of which are also European Special Areas of Conservation (SAC) and one of which is a European Special Protection Area. There are also around a thousand areas of conservation interest, a total that rises annually. Amongst wildlife that receives increased statutory protection in the area are badgers, otters, water vole, great crested newt, honey buzzard, goshawk and several species of bats. The Commission works closely with many organisations and local naturalists to ensure responsible management of all natural assets. Many United Kingdom and Local Biodiversity Action Plan (UKBAP and LBAP) species are represented in the region's forests. A rigorous consultation process before any forest operations protects landscape, habitats and species.

GREENING OUR BUSINESS

Sustainable Development in the Forestry Commission North York Moors

Sustainable development can be seen as 'development, which meets the needs of the present without compromising the ability of future generations to meet their own needs.'

'Securing the Future' - the UK Government Sustainable Development Strategy - asks Departments to prepare an action plan for the sustainable management of the Government estate.

The Forestry Commission North York Moors aims to meet the Government's intentions in the following ways:

1) The **sustainable management of forests**

Our forests are independently certified under the UK Woodland Assurance Standard Scheme. This means that the timber from the North York Moors woodlands can carry the international FSC logo.

2) The construction of the **new sustainable visitor centre** in Dalby Forest

This building is constructed from FSC certified timber and incorporates renewable energy features, e.g. solar photo-voltaic cells and a solar hot water system, a wind turbine, rainwater harvester to flush the toilets and a wood burner to heat the centre. It is partly made of recycled materials and has an exhibition on sustainability to inform visitors of the difference they can make at home.

3) Various **wood fuel initiatives**

For example supplying timber to Sempcorp at Wilton in the Tees Estuary to fuel the power station and working with the community of Bransdale to supply and ultimately let the community manage their local woodland for wood fuel.

4) The **Greenerways project**

This project is about how we, as FC employees, incorporate sustainability issues into our everyday working lives. This includes corporate management activities e.g. waste management, water and energy use, transport and human resources.

