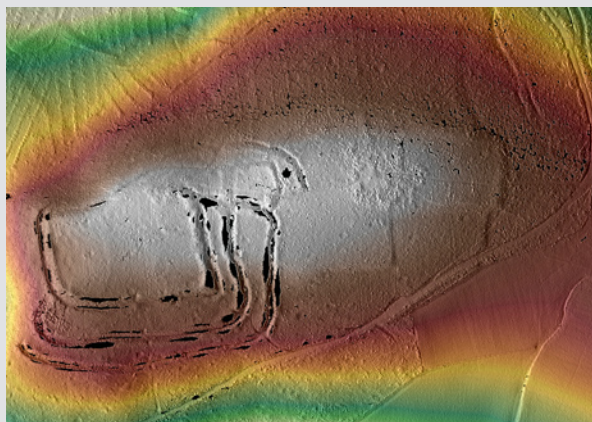




Woodland Heritage Services Group



Discover what lies beneath



**Helping land managers to
discover and protect what's under
the woodland canopy**

Forest Research's Woodland Heritage Services Group

The Woodland Heritage Services Group offers specialist advisory services to managers of local and regional heritage projects involving woodland. The Group works across Great Britain and Northern Ireland, with clients in the public, private and voluntary sectors.

Expertise

The Group has a wealth of archaeological and ecological knowledge, and technical expertise in modern Remote Sensing surveys and mapping. This is combined with an understanding of woodland management. This unique combination of expertise has been gained through decades of advising staff and clients from the Forestry Commission on heritage conservation and restoration projects.

Hidden treasure!

Few woodlands in Europe have been systematically surveyed for Historic Environment features, yet most contain significant remains. Many of these remains are the product of past woodland management whilst others indicate different land uses. Such factors can inform a decision to retain the features within woodland or to manage them as open space.



Woodland can provide long-term protection for many archaeological features, providing they are sympathetically managed. However, no two sites or features are the same and management on a site-by-site basis is necessary.

Veteran and other significant trees

The UK has more veteran trees than most other European countries and these are important both historically and ecologically. Many individual trees have names, are associated with historical events and are indicators of past land use. Despite this, most are not mapped and have poorly understood management requirements.



Services

The Group advises clients on heritage protection during specific forest operations, and in the development of longer-term management plans and monitoring systems to enable clients to meet the standards required for accreditation and sustainable forestry. All aspects of the Historic Environment are covered, ranging from advice on individual veteran trees and archaeological features to management practices for historic landscapes.

By working closely with other experts in Forest Research and its partner organisations, the Woodland Heritage Services Group is also able to provide expertise on related topics, such as Geographical Information Systems (GIS), environmental/site monitoring and biodiversity action plans.

Light Detection and Ranging (LiDAR) services

The Woodland Heritage Services Group collaborates closely with Cambridge University's Unit for Landscape Modelling, which is a world leader in Light Detection and Ranging (LiDAR) technology and surveys, to undertake heritage surveys of woodland.



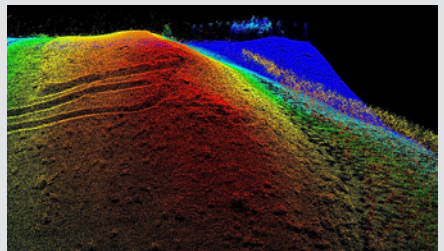
Modern technology for ancient remains

Light Detection and Ranging (LiDAR) uses airborne laser systems to map the ground surface below. When used over woodland, some of the laser energy is able to penetrate the canopy and, under optimum conditions, reach the ground surface beneath. This allows the woodland to be filtered out of the data and a three-dimensional model of the ground surface created. This can

show archaeological features that previously have been hidden from aerial surveys. However, there are many factors that can influence the effectiveness of this type of survey and not all existing third-party data are suitable. This is a highly specialised area and expert advice is needed.

Forest Research's Woodland Heritage Services Group offers a complete LiDAR service, including:

- specification advice/design and collection of new LiDAR data
- advice on site suitability, including desk-based and rapid field-based archaeological and ecological assessments
- feature interpretation through analysis of new or existing LiDAR data
- provision of processed maps and GIS-ready data
- presentation of key findings using a variety of methods, including stakeholder meetings.



The Group can also provide a complete LiDAR project management service.

For examples of recent LiDAR surveys worked on by this group, see
www.forestresearch.gov.uk/lidar



To find out more about the services offered by Forest Research's Woodland Heritage Services Group, contact:

Peter Crow,
Head of Historic Environment Research,
Forest Research,
Alice Holt Lodge,
Farnham, Surrey,
GU10 4LH,
United Kingdom.

Tel: +44 (0)1420 22255
Direct: +44 (0)1420 526168
Fax: +44 (0)1420 23653
e-mail: peter.crow@forestry.gsi.gov.uk

Lynn Jordan,
Office manager,
Historic Environment Research,
Forest Research,
Alice Holt Lodge,
Farnham, Surrey,
GU10 4LH,
United Kingdom.

Tel: +44 (0)1420 22255
Direct: +44 (0)1420 526165
Fax: +44 (0)1420 23653
e-mail: Lynn.jordan@forestry.gsi.gov.uk

www.forestresearch.gov.uk/heritage
www.forestresearch.gov.uk/lidar