

Wapley Hill Wood

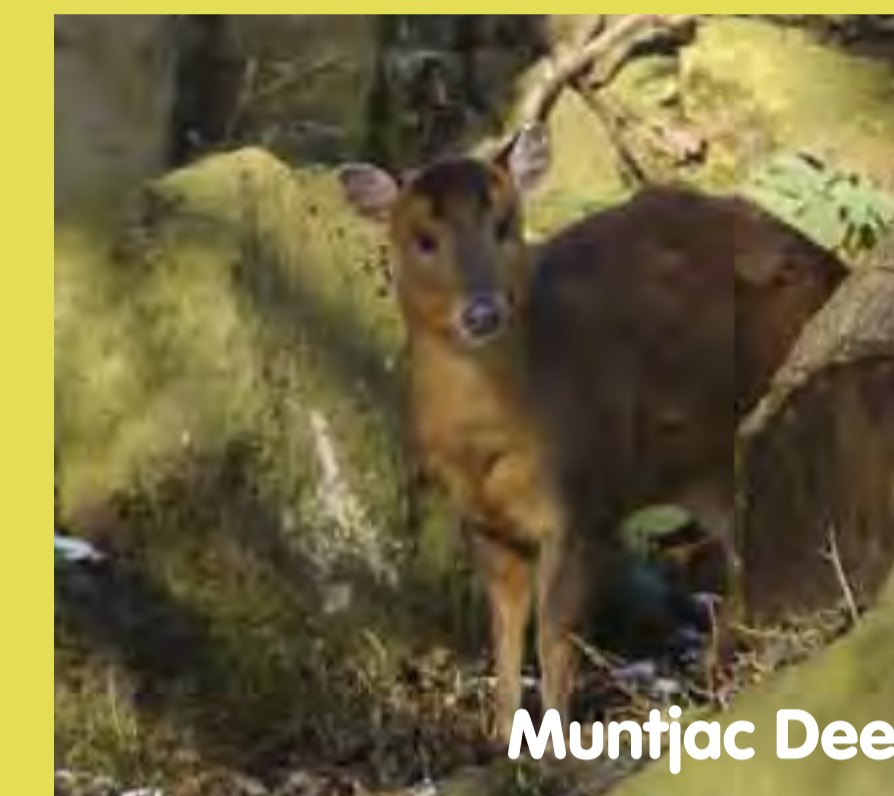
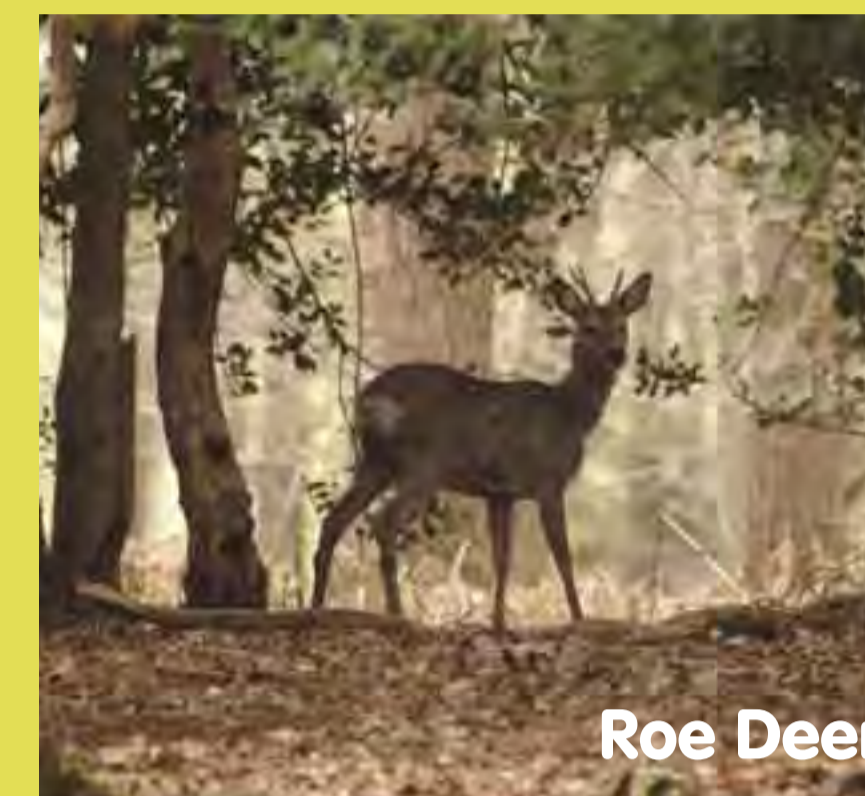


Welcome to Wapley Hill Wood!

The Forestry Commission manages this woodland for timber production, its stands of Douglas fir are converted into fencing materials for road building schemes all round the country. Fifteen percent of Wapley Hill Wood will be returned to broad-leaved species over the next 40 years.

You are welcome to walk anywhere in this woodland but we ask horse riders and cyclists to keep to the surfaced tracks to prevent the smaller paths becoming impassable for those on foot.

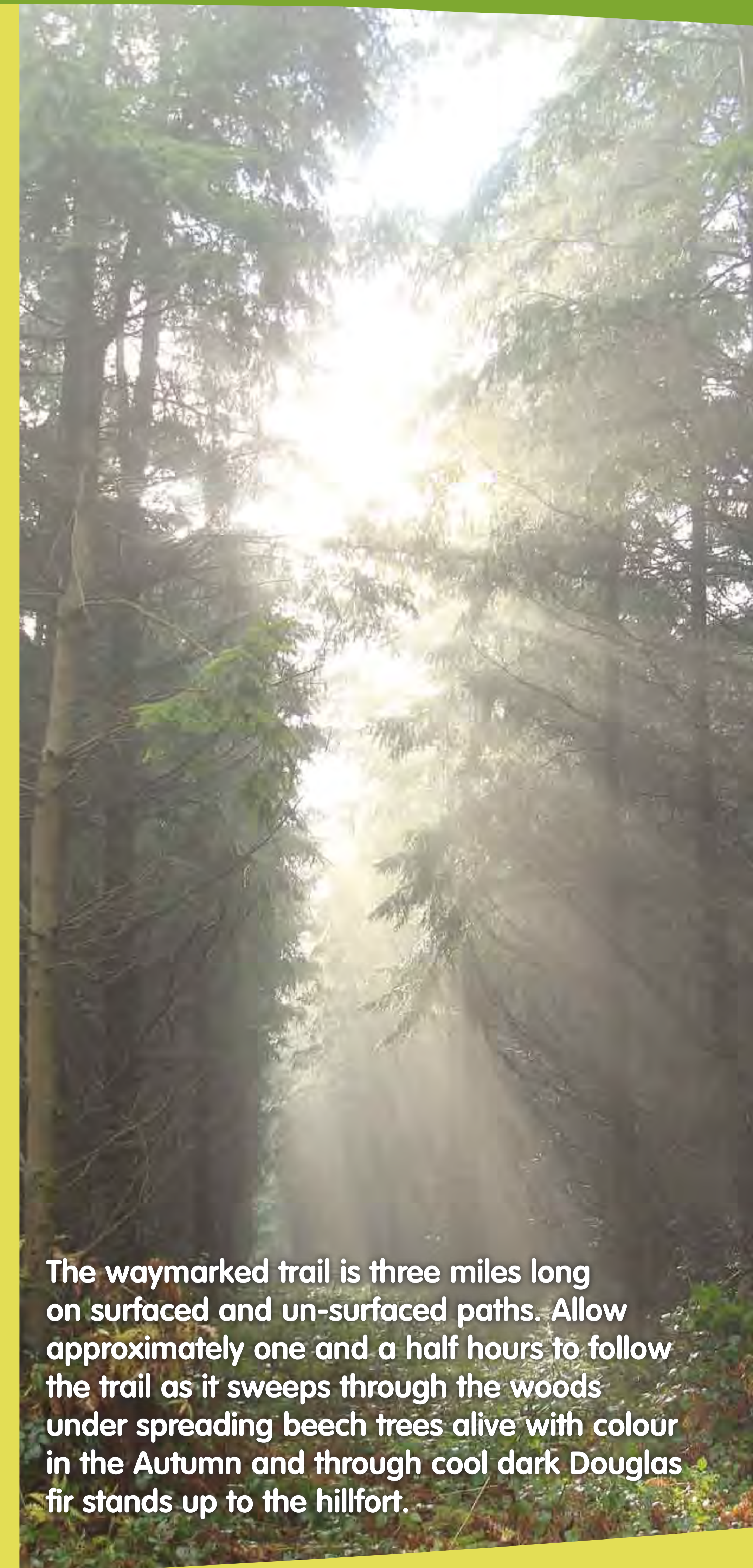
Walk quietly through the trees you may get a glimpse of the three species of deer that live here, roe, fallow or the muntjac.



Listen out for the woodpeckers that live high in the trees. Did you know that woodpeckers have some of the longest tongues in the bird world? They use them to grub out invertebrates from the holes they drill in the tree trunks.



Visit in spring and see the Bluebells. Did you know that 30% of the world's bluebells are in the UK and that they are poisonous to humans?



The waymarked trail is three miles long on surfaced and un-surfaced paths. Allow approximately one and a half hours to follow the trail as it sweeps through the woods under spreading beech trees alive with colour in the Autumn and through cool dark Douglas fir stands up to the hillfort.