

PLANT HEALTH NEWSLETTER

NO. 23 (December 2007)

In this issue

- Reduced Frequency of Inspection and reduced charges for wood of maple (*Acer saccharum*) originating in Canada and the USA
- Review of Plant Health Inspection Charges
- Landing Requirements for dunnage from 1st January 2008
- Temporary staff changes in the Plant Health Service
- Enquiries

1. Reduced Frequency of Inspection and reduced charges for wood of maple (*Acer saccharum*) originating in Canada and the USA

Following our recent consultation with the trade we are now implementing reduced levels of inspections on wood of maple (*Acer saccharum*) from Canada and the USA. The reduced checks will be carried out at the minimum percentage levels adopted by the European Commission of 35% and 75%, respectively, from **1st January 2008**.

This means that we will no longer inspect every container of maple from Canada and the USA. This will reduce the burden to the trade of having to pay a £76 (approx.) handling charge set and levied by Port Authorities on each container presented for inspection. We will, however, continue to carry out documentary and identity checks on all consignments.

In addition to reducing the overall cost of handling charges we are reducing the fee for plant health inspections of maple. The new fees, which will be applied to all consignments, whether inspected or not, will be £4.29 for maple from Canada and £9.19 for maple from the USA. (The current charge is £12.25 for consignments of up to 100m³)

Consignments of maple are usually, if not always, shipped in freight container loads of approximately 30m³. For consignments of more than 100m³, we will continue to charge at 20 pence/m³ for each cubic metre in excess of 100m³. By way of demonstrating how the new fees will be applied we have provided some worked examples below –

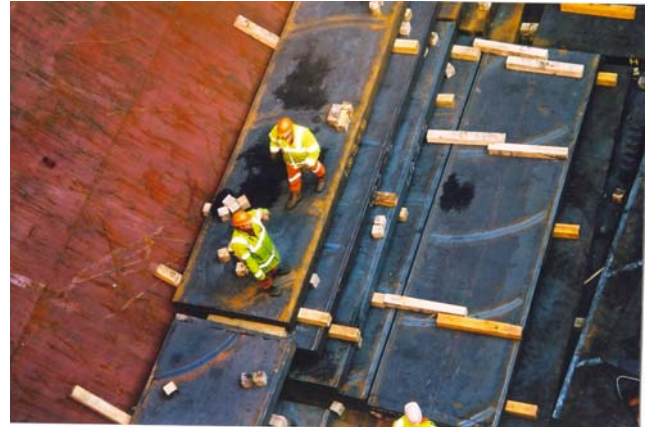


Photo: Dunnage used to wedge and support steel cargo in a ship's hold. For details of the landing requirements for dunnage with effect from **1st January 2008** see the article at section 3.

Containerised Volumes not more than 30m³

Maple from Canada (35% inspection) - £5.29* + £5.29[#] + **£4.29** = **£14.87**

Maple from USA (75% inspection) - £5.29* + £5.29[#] + **£9.19** = **£19.77**

Containerised Volume[#] more than 30m³, up to 100m³

Maple from Canada (35% inspection) - £5.29* + £5.29[#] + £5.29[#] + **£4.29** = **£20.16**

Maple from USA (75% inspection) - £5.29* + £5.29[#] + £5.29[#] + **£9.19** = **£25.16**

[#] NB – Identity checks charges of £5.29 are applied for each load of up to 30m³ forming part of the consignment contained in one truck, railway wagon, or comparable container.

* A documentary check fee of £5.29 is payable for each consignment covered by a single phytosanitary certificate, regardless of volume.

We will implement the reduced fees on 1st January 2008, regardless of the date of landing. Reduced fees will only apply to consignments made up entirely of maple from Canada or the USA. If consignments contain other controlled species, such as oak (from USA only) or Poplar/Aspen (from countries in the American continent), then the usual inspection fee of £12.25 will be applied, together with the fees for documentary and identity checks, as we will continue to inspect all such consignments.

(Continued overleaf.....)

An amendment to the Plant Health (Fees) (Forestry) Regulations 2006 and our fees guidance booklet will be made in due course.

If you have any queries about the new charges please do not hesitate to contact us.

2. Review of Plant Health Inspection Charges

We have reviewed the range of plant health charges set out in The Plant Health (Fees) (Forestry) Regulations 2006 against our target of full cost recovery and have concluded that there is no need to make any changes at this time.

We will continue to keep this under review should we feel it necessary to amend the fees we will carry out a formal consultation.

3. Landing requirement for dunnage from 1st January 2008

Since March 2005 we have advised importers via our webpages that wood used to wedge or support cargo (also referred to as dunnage) should either be made from bark-free wood that is free from pests and signs of live pests **OR** should meet the ISPM15 requirements for wood packaging material ie it should be treated and marked.

However, we also advised that from **1st January 2008** onwards, only dunnage which meets the requirements of ISPM15 will be allowed to enter the EU.

Importers are therefore reminded of this important change to the import requirements for dunnage as material landed after this date which is not ISPM15 compliant will be subject to remedial action by our inspectors which could involve destruction by burning or re-export.

There is one exception. Dunnage such as bearers, stickers and spacers, which are integrated/ banded into cargoes of regulated wood, does not need to be marked to ISPM 15 standards. This because the phytosanitary certificate will cover the whole consignment and will certify that the dunnage, as well as the regulated wood, meets the landing requirements.

For bearers and stickers etc made from non-manufactured wood products and greater than 6 mm thickness which are integrated/banded into cargoes of non-regulated wood (e.g. tropical hardwoods, plywood and other wood panel products), as well as all dunnage associated with any other type of cargo, must be ISPM 15 compliant and marked, regardless of whether they are a regulated species or not.

4. Temporary staff changes within the Plant Health Service

With effect from 3rd December, Stewart Snape our Regional Manager (North) took up a new position as the Forestry Commission's Climate Manager and he is expected to maintain this role until early 2009.

Our customers are therefore advised that Dave Tracy, (currently our Operations Support Officer) will act as Regional Manager (North) for the foreseeable future during Stewart's transfer on temporary promotion to new duties. The contact numbers for Dave and the other operational team members can be found at the enquiries section below.

5. Enquiries

All enquiries relating to this newsletter should be directed to the relevant Plant Health Regional Manager –

Steve Mears, Regional Manager (South) – Tel/Fax: 01507 328275 Mobile 07831 204324 timber imports to Humber, Felixstowe, Ipswich, Thamesport, Tilbury and Southampton, The Wash Ports, South West England, Bristol Channel and South Wales

Dave Tracy, Regional Manager (North) Tel: 01546 602832 Mobile: 0777 180 8513 Fax: 0131-3146148 timber imports to Liverpool, Tyneside, North Wales and Scotland

Ian Brownlee, Operations Manager Tel: 0131-314-6480 Mobile 07831 159014 Fax 0131-314-6148

Issued By: The Forestry Commission's Plant Health Service, Silvan House, 231 Corstorphine Road, Edinburgh, EH12 7AT

Tel: 0131-314-6414 **Fax:** 0131-314-6148 **E-mail:** plant.health@forestry.gsi.gov.uk **Website:** www.forestry.gov.uk/planthealth

'Protecting and Expanding Britain's Forests and Woodlands and Increasing their Value to Society and the Environment'