

# **Giggle Alley Forest Design Plan**

## **Japanese Garden Plan First Review 2010**



**Produced by Gareth Browning (Beat Forester)  
and Chris Jones, (Volunteer Garden Warden)**



**Forestry Commission**  
England

# Maintaining The Japanese Garden

## Structures

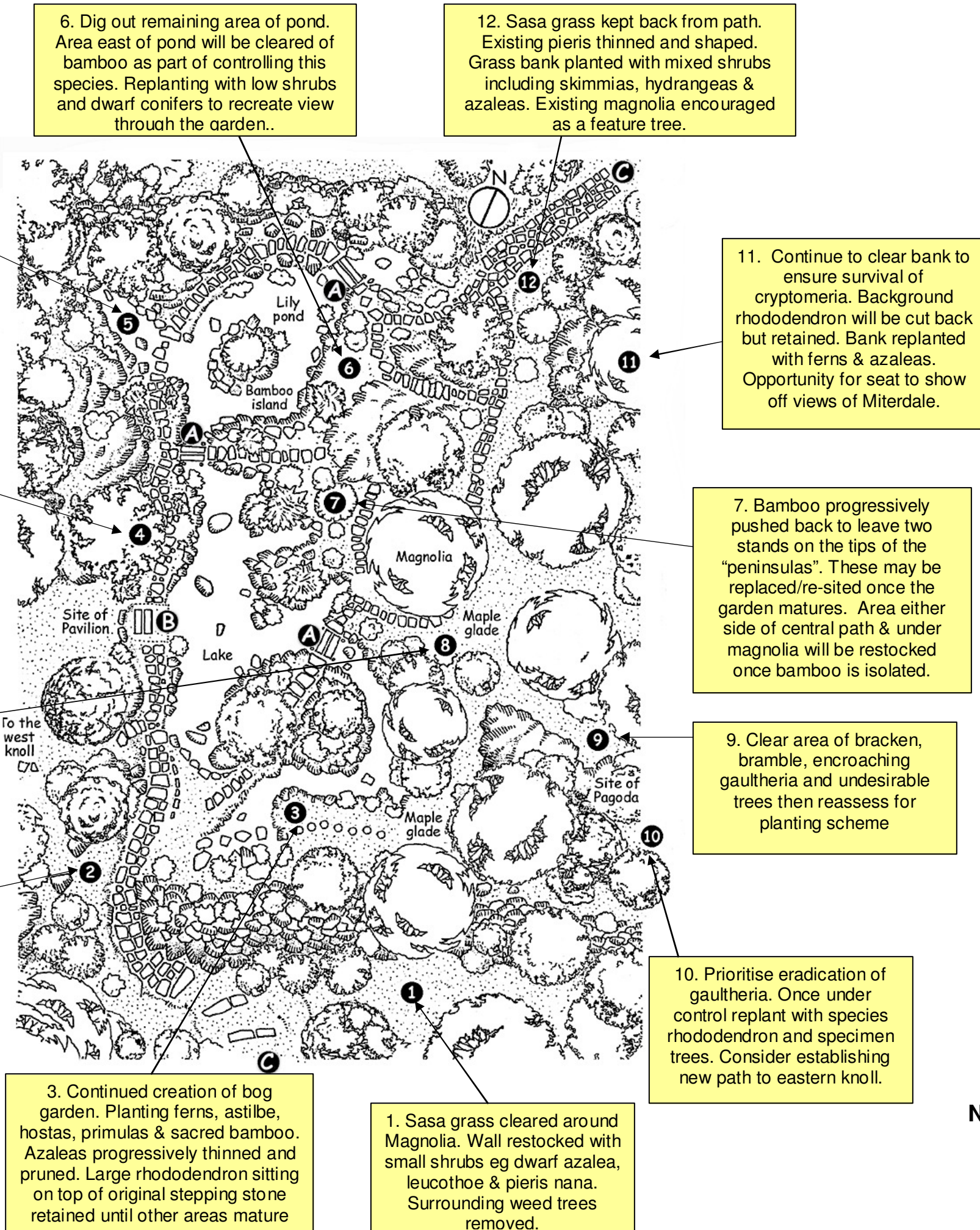
The garden and peoples interpretation of it would benefit from the reintroduction of some of the original structures.

B - A covered seat where the original walk through pavilion was sited.

C - Traditional Japanese gateways at either end of the main path to act as garden entrances.

D - Simple benches to make the best of the views.

In addition temporary structures such as bamboo fencing will be used to protect and identify new areas of planting

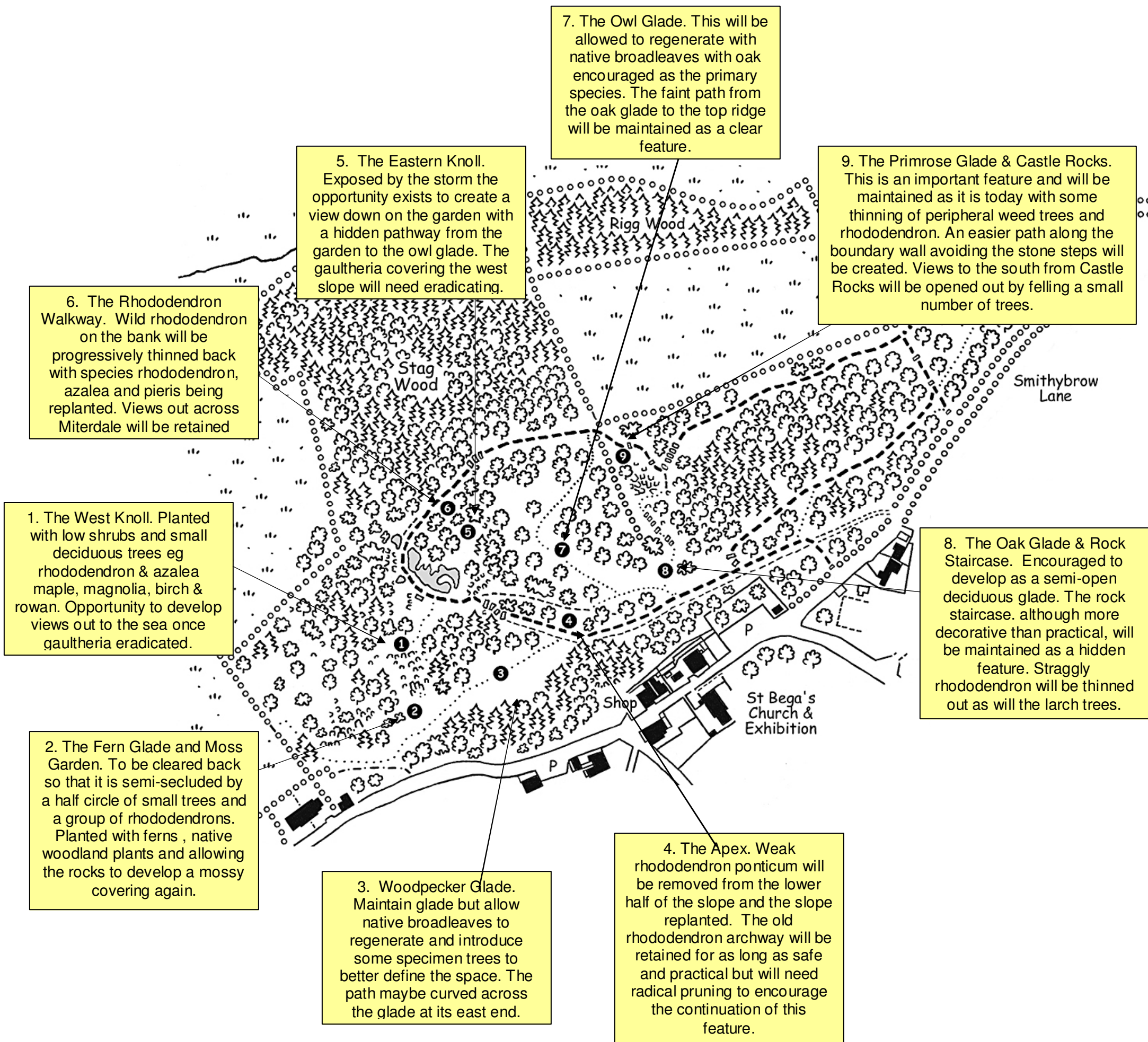


The implementation of actions and proposals listed in this plan are ultimately subject to available funding, time and resources.



North West England Forest District  
**Giggle Alley**  
Forest Design Plan

# Extending The Japanese Garden



6. The Rhododendron Walkway. Wild rhododendron on the bank will be progressively thinned back with species rhododendron, azalea and pieris being replanted. Views out across Miterdale will be retained

5. The Eastern Knoll. Exposed by the storm the opportunity exists to create a view down on the garden with a hidden pathway from the garden to the owl glade. The gaultheria covering the west slope will need eradicating.

7. The Owl Glade. This will be allowed to regenerate with native broadleaves with oak encouraged as the primary species. The faint path from the oak glade to the top ridge will be maintained as a clear feature.

9. The Primrose Glade & Castle Rocks. This is an important feature and will be maintained as it is today with some thinning of peripheral weed trees and rhododendron. An easier path along the boundary wall avoiding the stone steps will be created. Views to the south from Castle Rocks will be opened out by felling a small number of trees.

8. The Oak Glade & Rock Staircase. Encouraged to develop as a semi-open deciduous glade. The rock staircase, although more decorative than practical, will be maintained as a hidden feature. Straggly rhododendron will be thinned out as will the larch trees.

1. The West Knoll. Planted with low shrubs and small deciduous trees eg rhododendron & azalea maple, magnolia, birch & rowan. Opportunity to develop views out to the sea once gaultheria eradicated.

2. The Fern Glade and Moss Garden. To be cleared back so that it is semi-secluded by a half circle of small trees and a group of rhododendrons. Planted with ferns, native woodland plants and allowing the rocks to develop a mossy covering again.

3. Woodpecker Glade. Maintain glade but allow native broadleaves to regenerate and introduce some specimen trees to better define the space. The path maybe curved across the glade at its east end.

4. The Apex. Weak rhododendron ponticum will be removed from the lower half of the slope and the slope replanted. The old rhododendron archway will be retained for as long as safe and practical but will need radical pruning to encourage the continuation of this feature.

The areas highlighted are those with an adjacency to the Japanese Garden, or that have particular landscape characteristics. Most were affected by the storm in January 2005, and consequently represent new spaces for regeneration and planting.

These satellites are basically numbered in the order that they are likely to be cleared and replanted. Although many of them will retain an element of non-native species, the aim is to soften the boundaries between native and non-native, which was clearly the intent in the woodland's original design. The speed of replanting will largely be determined by the availability of new plants and cuttings