

BIOENERGY

A Guide to Funding & Support Programmes in the West Midlands



December 2008

Introduction

This guide lists potential sources of support and finance available for those interested in adopting bioenergy at one or more stages of the bioenergy chain (from crop growing and processing, to end-use). It includes products and programmes specific to the West Midlands and has been compiled for this purpose, however, it also covers opportunities open to regions elsewhere in the UK.

Contents are structured as follows:

1 Funding for Environmental Improvement: including grants available toward capital and revenue costs of developing and implementing a project

2 Funding for Energy Crops: the funding available toward energy crop establishment

3 Funding for Supply Chain: support for users and installer of infrastructure for handling, processing and storage

4 Funding for Research, Development & Demonstration: support for individual and collaborative research on innovative technologies or processes, or the further development of an existing idea

5 Other Financial Support: regulatory mechanisms introduced to stimulate the renewable energy market, venture capital, loans, finance, taxation and energy services

6 Support programmes: Sources of advice, consultancy and practical support on bioenergy, and relevant national and regional policies

7 Bioenergy Information: Reference list for further information

A coding system identifies the relevance of each entry to their own area of interest:

A	All bioenergy technologies, including biofuels/biogas development	E	Anaerobic Digestion
B	Biomass boilers	F	Energy crop development
C	Biomass pellet stoves	G	Biofuels
D	Biomass CHP	H	Other biogas
		I	Supply chain

Some grants can be match funded against others, although many of the public sources constitute state aid, for which there are maximum rates of support available. Information on this can be found at: www.berr.gov.uk/bbf/state-aid/rules/index.html.

Marches Energy Agency believes this document to be accurate at time of writing. However factors such as entry requirements, availability of funds and regulatory requirements are subject to change and users should check with the appropriate body to confirm the current situation. This report does not claim to be exhaustive or to include all relevant funding and support currently available on the market. Please email Bioenergy West Midlands (slarge@harper-adams.ac.uk) with any amendments or additions to this Guide.

Contents

	Page
Introduction	2
Contents	3
1 Funding for Environmental Improvement	4
1A West Midlands	4
1B United Kingdom	10
1C EU	14
2 Funding for Energy Crops	16
3 Funding for Supply Chain	18
4 Funding for Research, Development & Demonstration	20
5 Other financial support	26
5A Major financial mechanisms	26
5B Venture Capital	28
5C Loans & Finance	31
5D Energy Services	32
5E Taxation	34
6 Support Programmes	36
6A WM: Environmental Improvements	36
6B UK: Environmental Improvements	43
6C Support for Supply Chain & Producers	46
6D Consultancy Services	51
6E Policies	55
7 Bioenergy Information	56
8 Index of Abbreviations	64

1 Funding for Environmental Improvement

1A West Midlands

All local and regional authorities offer some kind of financial support toward environmental and community projects and in some cases, this can be directed specifically toward bioenergy and/or other types of renewable energy. Examples such as the ERDF and ALSF may be part of a national or European programme but are administered at a local level. Requirements, duration and the size of grant can vary considerably and information on these has been included in this section where available.

Aggregates Levy Sustainability Fund (ALSF) A	
About	A Government fund that aims to reduce the environmental impacts of aggregates extraction and benefit areas subject to impacts. It is delivered by local partners who undertake publicity and administration according to nationally set objectives
Coverage	UK
Eligibility	Projects must be sited in areas that suffer or have suffered environmental impacts of aggregates extraction
Support	The types of project supported vary between local partners according to their own priorities and community need e.g. environmental, transport and community improvement. Size of grant varies between partners with the majority up to £20k. Partner contact details are available on the website. The 2008/09 fund is closed to applications. Funding for 2009/10 is awaiting confirmation from Defra and will be published by delivery partners when available
Next steps	The call for applications is annual and will be announced by partners
Information	Contact the relevant delivery partner for further information Web: www.defra.gov.uk/environment/waste/aggregates/funding.htm

Case Study: Capernwray Hall Wood Fuel Scheme, Lancashire

A 500kW wood pellet boiler was installed at the Hall as part of a new small-scale district heating scheme providing heat and hot water to the five main buildings on site. The scheme replaces oil fired boilers located in each of the buildings which together, accounted for an annual oil consumption of 120,000 litres at a cost of over £30k. The total boiler capacity for the scheme is 750kW of which 500kWh is supplied by the wood pellet boiler and the remaining 250kW by an oil fired support boiler. The boiler was supplied, installed and commissioned by Mercia Energy Ltd and took two years to complete, benefiting from an over £8k ALSF grant. Details at www.mercia-energy.co.uk



Community Sustainable Energy Programme (CSEP) B C	
About	A BRE grant programme for community-based organisations supporting feasibility studies and the installation of sustainable energy projects, including automated wood pellet stoves and biomass boilers. Marches Energy Agency (MEA) is the West Midlands' registered consultant
Coverage	England
Eligibility	Not-for-profit community based organisations including community groups with a governing document, registered charities and trusts, parish councils, schools and colleges, companies with a charitable purpose and community focus, mutual societies, and church and faith organisations Organisations or public bodies engaged in economic activity are ineligible
Support	Development Grants available for up to the lower of £5k or 75% of feasibility costs; the study must be carried out by an appointed consultant Capital Grants for the lesser of £50k or 50% of the installation cost of a certified microgeneration technology by a certified installer, and can be matched with a grant from the Low Carbon Buildings Programme Phase 2. The programme expects to continue until December 2010
Next steps	Applications accepted online or by post throughout the year for quarterly review meetings. Development grants are awarded on a first-come first-served basis until funding has been exhausted. The dates of forthcoming rounds are published on the website
Information	Web: www.communitysustainable.org.uk Tel: 01743 277119 Email: danny.lenain@mea.org.uk

European Regional Development Fund (2007-13) A	
About	A funding programme aiming to stimulate the economy of Europe's regions. Management is within regions and will be aligned with existing procedures for managing the Single Pot budget
Coverage	West Midlands
Eligibility	The programme will predominately target SMEs and new enterprises
Support	Objectives are aligned with the West Midlands' Economic Strategy and investment plans. The five priority areas are underpinned by cross-cutting themes of environmental sustainability and equal opportunities: <ul style="list-style-type: none"> • Priority Axis 1: Promoting Innovation, Research & Development • Priority Axis 2: Stimulating Enterprise Development • Priority Axis 3: Achieving Sustainable Urban Development • Priority Axis 4: Developing Inter-Regional Activity • Priority Axis 5: Technical Assistance
Next steps	Project development must be in cooperation with the three "delivery vehicles" - Regeneration Zones, High Technology Corridors, and Business Clusters Applications should be submitted on the Standard Outline Proposal Forum according to published deadlines and those recommended, will proceed to full application. An Outline Proposal Pack is available from the website
Information	Web: www.advantagewm.co.uk/working-with-us/ERDF-

Programme/default.aspx Zena Simms, European Programme Coordinator, Tel: 0121 380 3352 Email: zenasimms@advantagewm.co.uk
--

RE:think Energy B C D E I	
About	A grant scheme for SMEs toward installing renewable energy technologies and related equipment, delivered by Shropshire County Council and Marches Energy Agency and funded by Advantage West Midlands
Coverage	Rural Regeneration Zone (RRZ) areas of Shropshire, Herefordshire and Worcestershire
Eligibility	SMEs, including farms, hotels, pubs, and self-employed, towards installing biomass and biomass-CHP systems and anaerobic digestion projects. Planning permission must be secure before funding can be released, if relevant
Support	Grant of up to 50% of the cost of technology and related equipment; the grant does not cover equipment routinely used for other purposes. This can be matched by another public source as long as the amount does not exceed the EU state aid threshold of €200,000. SMEs interested in diversifying or setting up business in renewable energy technology installation can apply to receive one of twenty fully-funded training placements on an accredited training course
Next steps	Applicants must register to enter the four stage application process involving an on-site 'Energy Assessment' prior to submission of the final form. The grant is paid in full once purchase can be evidenced
Information	Web: www.rethinkenergy.org.uk Tel: 01743 277130 Email: info@rethinkenergy.org.uk

Rural Enterprise Grant (REG) A I	
About	The Rural Enterprise Grant is funded under the Rural Development Programme for England (RDPE) and is available to farmers and specific rural micro-businesses in the West Midlands. The RDPE is managed by AWM; the REG is administered by Herefordshire Council
Coverage	West Midlands
Eligibility	Funding is targeted at: farm businesses, members of farming households and new or existing businesses with fewer than ten full-time employees and whose turnover is equivalent to €2. Businesses must also be located in eligible rural areas/whose core activities are based on food and drink, environmental technologies or tourism
Support	The REG provides funding for investments in environmental technologies, food and drink, tourism and livestock activities. Support is available for bioenergy installations and recycling/waste equipment, renewable energy installations, and for supply chain equipment A grant of up to 40% eligible costs is available to a maximum £62.5k, the remainder to be matched with funding from the private sector. State Aid restrictions apply
Next steps	Contact the REG scheme manager at Herefordshire Council to discuss proposal and eligibility and to complete Enquiry Form and State Aid

	declaration. The full application process will then be initiated
Information	<p>Web: www.herefordshire.gov.uk/business/index.asp</p> <p>Dorothy Coleman Tel: 01432 383616 Email: dmc@herefordshire.gov.uk</p> <p>Caroline Cattle Tel: 01432 260662 Email: ccattle@herefordshire.gov.uk</p>

Shropshire and Staffordshire Renewable Energy Project B I	
About	A renewable energy project to promote and accelerate the use of biomass, and stimulate development of a biomass supply chain
Coverage	Staffordshire and Shropshire
Eligibility	Business
Support	<p>Grant of up to 50% (maximum £2.5k) of feasibility study or specification costs. Feasibility studies examine the most suitable technology while specification studies explore the technical side of installation</p> <p>Information and advice on fuel supply and technology is available free of charge on the website and through networking with existing local businesses. The project can also provide training opportunities e.g. seminars, workshops and visits to installations</p> <p>Feasibility and project-related research can be undertaken at cost however a potential 50% funding may be available for small projects involving collaboration between three or more West Midlands companies to develop renewable energy technologies</p> <p><i>See Support for Supply Chain for further details</i></p>
Next steps	An application form is available from the project manager and should be returned with two quotes according to the published deadline
Information	<p>Web: www.staffsoc3.org.uk/default.aspx?PageId=108</p> <p>Tel: 01785 276528</p> <p>Email: diane.roberts@staffordshire.gov.uk</p>

Strategic Investment Grant	
About	A grant scheme to support large scale investments in the supply chain, storage and processing project including in bioenergy and other renewable technologies
Coverage	West Midlands
Eligibility	To be confirmed
Support	Grants of up to £62.5k for projects with total value in excess of £250,000, covering up to 40% of eligible costs
Next steps	Details will be published on the website in the New Year when confirmed
Information	Web: www.advantagewestmidlands.co.uk

Sustainable Development Fund (SDF) A	
About	A Government grant scheme to bring social, environmental and economic

	benefits to National Parks, AONBs and other protected landscapes. It is administered nationally by Natural England and delivered through local partnerships
Coverage	UK
Eligibility	<p>Public, private, voluntary sector and community groups. Individuals and businesses may also apply where the project shows a clear benefit to the wider community. It is not a requirement that applicants live or work in the eligible area and the work does not have to take place within the area, however the project must demonstrate how the area will benefit</p> <p>Priorities for projects include climate change, energy conservation, renewable energy and sustainable transport; and the more sustainable use of resources, especially in relation to farming and land management</p>
Support	Grant of up to 75% if a voluntary, community or private sector body or up to 50% if public with awards normally between £1k and £10k. Match funding can be made up of in kind, volunteer time contributions or capital except from another public source. Funding can be used to support a range of activities including practical work, feasibility studies or research projects, group development, awareness raising and training
Next steps	An ideas form should be submitted to the local team for review prior to completing the full application and are accepted at any time. Decisions on grants are made by an advisory panel which meets several times a year
Information	<p>Shropshire Hills AONB Web: www.shropshirehillsaonb.co.uk/partnership/sdfund.htm Tel: 01588 674084 Email: cath.landles@shropshire.gov.uk</p> <p>Malvern Hills AONB Web: www.malvernhillsaonb.org.uk Tel: 01905 766491</p> <p>Peak District National Park Web: www.peakdistrict.gov.uk/index/looking-after/grants/business/sdf.htm Tel: 01629 816312 Email: sdf@peakdistrict.gov.uk</p> <p>Wye Valley AONB Web: www.wyevalleyaonb.org.uk/pages/support/help.asp Tel: 01600 710844 Email: community@wyevalleyaonb.org.uk</p> <p>Cannock Chase AONB Web: www.cannock-chase.co.uk/page.asp?pid=40 Tel: 01889 882613 Email: cannockchase@staffordshire.gov.uk</p>

Case Study: Sustainable Youlgrave

Located in the middle of the Peak District National Park, near Bakewell, Sustainable Youlgrave seeks to take Youlgrave beyond carbon neutral so that via energy conservation, renewable and sustainable means, it becomes a net energy contributor. Grant funding from the Peak District National Park SDF enabled feasibility scoping studies for a community anaerobic digestion facility. Youlgrave aims to proceed to the full feasibility stage with the aim of developing this to implementation, including the establishment of a community owned green energy company. Visit www.sustainableyoulgrave.org/.



Sustainable Tourism Business Grants A	
About	Local grant scheme for quality and performance improvements in tourism businesses to ensure sustainability of the industry, funded through the ERDF. Bioenergy systems may be funded as part of a wider package
Coverage	South Shropshire, North Shropshire, and Bridgnorth Districts, and Oswestry Borough
Eligibility	Businesses must have been trading for over one year in accommodation (including pubs), visitor attraction, conferences and meetings (attracting visitors to stay), tourism activity (e.g. cycle hire), or food and drink production or craft/artisan businesses (where grant is to increase tourism potential). Those based on farms are only eligible if separate from the farm business; restaurants and retail businesses are excluded
Support	The size of grant varies between local authority area between a maximum of £1k and £10k and can be used toward fixed, tangible assets. Bioenergy technologies will not be funded alone however may be part-funded as part of a wider package. The scheme is expected to continue in 2009 under Shropshire Council
Next steps	Businesses should contact their local officer to discuss their proposal and eligibility, before being connected to the Regional Centre for Tourism Business Support to continue the application process
Information	South Shropshire District: Tim King Tel: 01584 813210 Email: tim.king@southshropshire.gov.uk Bridgnorth District: Gina Barker Tel: 01746 713249 Email: gbarker@bridgnorth-dc.gov.uk North Shropshire District: Frank Lauriello Tel: 01939 238417 Email: flauriello@northshropshiredc.gov.uk Oswestry Borough: Roisin Bennett Tel: 01691 677221 Email: roisin.bennett@oswestry-bc.gov.uk

Local & Regional Government Support A I	
About	Regional and local authorities are at liberty to offer support on bioenergy on a case by case basis, or as part of a local programme. Authorities may also administer national programmes within their area e.g. RDPE, ALSF
Coverage	Regional or local authority area
Eligibility	No restrictions, commonly community sector, charitable and not for profit organisations, and public sector services including schools
Support	<p>Grants may contribute towards capital and installation costs, but may also cover administration, travel and other revenue</p> <p>The majority of grants are small grants for one off projects such as in:</p> <ul style="list-style-type: none"> • Community improvement • Community buildings and infrastructure • Sustainable communities • Environment and sustainable development • Sustainable energy <p>Larger grants may be available in exceptional circumstances</p> <p>The <i>Small Grants Scheme</i> is common to many local councils offering a maximum £500 from annual calls for projects of benefit to the wider community</p> <p>In addition to funding, authorities are able to offer advice on projects, including on local policy, and provide sign-posting to other sources of information and finance</p>
Next steps	Contact the sustainability or environment team in the local council to discuss needs and for information on the support available
Information	<p>A list of West Midlands' local authorities is available at Web: www.direct.gov.uk/en/D11/Directories/LocalCouncils/LocalGovernmentByRegion/DG_4003650</p> <p>Advantage West Midlands (Regional Development Agency) Web: www.advantagewm.co.uk Tel: 0121 380 3500</p>

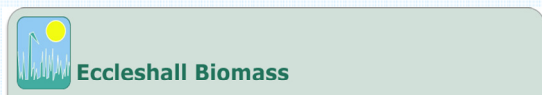
1B United Kingdom

A range of national funding programmes operate in the UK managed by government, the Lottery, energy utilities or charitable trusts. The grants available contribute toward the capital and other direct costs of projects and in some cases, may also offer revenue support.

Awards for All in England A I	
About	A Lottery grant programme supporting local and community projects in art, sport, education, environment and health
Coverage	England

Eligibility	Voluntary and community sector, not-for-profit groups, parish and town councils, schools and health bodies
Support	Grants of £300 - £10,000 available until March 2009 when the programme will change. Further details will be published on the website when available. Eligible costs include feasibility studies and equipment hire
Next steps	Straightforward application, eight weeks from submission to notification
Information	Web: www.awardsforall.org.uk/england/index.html Tel: 0845 600 20 40 Email: general.enquiries@awardsforall.org.uk

Bioenergy Capital Grants Scheme B C D E	
About	Five year programme launched in 2006 as part of the UK Environmental Transformation Fund. It aims to accelerate the demonstration and deployment of low carbon and energy efficiency technologies including of biomass-fuelled heat boilers and biomass-fuelled CHP equipment, including anaerobic digesters for heat-only or CHP. Round five of the scheme was announced in December 2008 and will be administered on behalf of DECC by AEA technology consultants
Coverage	England
Eligibility	Businesses, organisations and charities in the commercial, industrial and community sectors toward biomass-fuelled heat and/or CHP projects, including AD. Households are not eligible to apply
Support	A grant of up to 40% of the difference in the installation and other direct costs compared to the fossil fuel alternative, to a maximum £500k. There is no minimum grant. Applications covering several installations can apply for up to £500k per installation. Projects funded by Building Schools for Future can also apply The scheme is open to applications from 10 th December until at least 30 th April 2009
Next steps	Application form and guidance notes can be downloaded from the website. Applications will be assessed on a rolling basis as and when received
Information	Web: www.bioenergycapitalgrants.org.uk/ Email: mailto:biocapitalgrants@aeat.co.uk



www.eccleshallbiomass.co.uk

Case Study: Eccleshall Biomass is amongst the first of dedicated bio-energy power plants in the UK. Owned by Eccleshall Biomass, the project received one of five UK grants from the DTI Bioenergy Capital Grants Scheme and a further grant from AWM

- 2MW generator
- Main fuel locally grown Miscanthus; energy crops and clean wood chip also suitable
- Diversification opportunities and long term supply contracts for up to 60 farms
- BiEcc Ltd established by local farmers to co-ordinate supply
- Save estimated 1 tCO₂ per hour compared to fossil generated electricity

EDF Energy Green Fund B C D E	
About	A grant programme for renewable energy projects created through customer energy premiums
Coverage	UK
Eligibility	Government bodies, local authorities/schools, registered charities, not-for-profit or private organisations, or those limited by guarantee. Technologies funded include biomass boilers, generators, digesters, and CHP
Support	A maximum £5k grant toward a feasibility study or up to £30k for installing a small scale renewable energy technology, which must be no more than 50% of the total project cost
Next steps	Applications submitted online for twice-yearly review
Further information	Web: www.edfenergy.com/products-services/for-your-home/our-green-products/green-energy-fund.shtml# Tel: 0800 051 1905 Email: greenfund@edfenergy.com

E.ON SOURCE FUND B C	
About	A grant programme supporting community energy projects which either result in the production of energy from a sustainable source or which reduce the amount of energy used by a community organisation
Coverage	UK
Eligibility	Community groups, charities and not for profit organisations, including schools, local and national charities, special education colleges and wildlife parks. Projects that have already received public sector support are also eligible. It does not support residential or business projects
Support	A grant of up to £30k to a maximum 90% of the cost of purchasing and installing biomass heating (or another micro-generation technology), physical measures and associated direct costs, either alone or in combination with another technology Applications are currently closed; details for 2009 will be published on the website when available
Next steps	Applications are available from the website for return by email to E.ON SOURCE. Successful applicants will be notified within about 4 weeks
Information	Web: www.eon-uk.com/about/source.aspx Email: source@eon-uk.com

Case Study: Marston Vale Trust



The Trust, located in Bedfordshire, is one of 12 community forests in England. It aims to regenerate 61 square miles of woodland in the Marston Vale. The facility already receives about 130,000 visitors each year and also provides ancillary facilities for the Trust staff and two environmental organisations.

The grant of £30,000 has been awarded to install a woodchip boiler, store and fuel transfer system to provide heating for the facility. It will also be used to promote renewable energy and enable visitors and local businesses to see this technology in action.

Low Carbon Buildings Programme – Phase 1 B C	
About	BERR grant programme for installing microgeneration technologies in households, including stand-alone biomass stoves and biomass boilers
Coverage	UK
Eligibility	Individual property owners are eligible to apply providing they have completed required energy efficiency measures. Technologies must be certified and installed by a certified installer
Support	A grant for an automated wood pellet heater/stove to the lesser of £600 or 20% of eligible costs, rising to £1.5k or 30% for a wood fuelled boiler
Next steps	Applications must be submitted online. Funding is released on return of the grant claim form once the installation is completed. A list of certified products and installers is available on the website
Information	Web: www.lowcarbonbuildings.co.uk/home Tel: 0800 915 0990 Email: info@lowcarbonbuildings.org.uk

Low Carbon Buildings Programme – Phase 2 B C	
About	BERR grant programme for installing up to three microgeneration technologies at a single site by a public sector or not-for-profit organisation
Coverage	UK
Eligibility	Public sector and non-for-profit organisations that own or own leasehold interest in the building and have the owner's permission, and that meet the required standard of energy efficiency. Technologies must be certified and installed by a certified installer. Organisations are not eligible if the project has already received funding from national government however recipients of other public or local authority funding can apply
Support	A grant of up to 50% eligible costs for installing technologies and directly associated works including wood pellet stoves, and boiler systems with a capacity of 45kWth or below
Next steps	Applications can be submitted online or by post. Maximum 50% of the grants will be paid at the interim stage and the remainder on completion. A list of certified products and installers is available on the website
Information	Web: www.lowcarbonbuildingsphase2.org.uk Tel: 08704 2323 13 Email: info@lcbpphase2.org.uk

Case Study: Shrewsbury Environmental Technology Centre, Shropshire



The Centre is a public-private joint venture showcasing low energy sustainable design. It is home to a range of environmental organisations including Marches Energy Agency, Water Management Consultants, Build IT International, and the Shropshire & Wrexham rail company. Formerly the Shrewsbury pump house, site redevelopment was completed in 2008 to include a solar thermal and solar photovoltaic system, and a 'Windhager' wood pellet boiler which modulates between 7 and 26kW and runs at about 75°C. The wood pellet boiler was part-funded by a grant from the Low Carbon Buildings Programme Phase 2.

Naturesave Trust A I	
About	A Trust fund managed by ethical insurers Naturesave Policies Ltd for environmental projects and projects encouraging the greater adoption of sustainable development
Coverage	UK
Eligibility	Projects must be from an existing environmental or conservationist groups or organisations
Support	To be eligible, costs must relate directly to a specific project and not be general administrative costs of the organisation. The scope of projects funded is broad from an existing company or charity seeking full or match funding, to a start-up grant for a sustainable business entrepreneur. Funding ranges from £100 to £10k with the average grant being around £2k
Next steps	Application forms can be downloaded from the website and submitted at any time
Information	Web: www.naturesave.co.uk/naturesave_trust.html Tel: 01803 864390 Email: mail@naturesave.co.uk

Scottish Power Green Energy Trust A	
About	A grant programme toward the capital and installation costs of renewable energy projects, created through customer donations from energy bills
Coverage	UK
Eligibility	Community groups, charities and not-for-profit organisations for projects supporting the local community through education and public engagement. All types of technology are considered including biomass and landfill gas
Support	Grants for up to 50% of capital and investment costs, excluding feasibility studies. The maximum award is £25k with most receiving around £10k
Next steps	Applications are accepted at any time for thrice yearly review – usually early April, September and December. The final deadline is four weeks before the meeting. Grants will be paid on evidence of completion
Information	Web: www.scottishpowergreentrust.co.uk/content/default.asp?page=s1 Tel: 0141 568 3492 Email: greenenergytrust@scottishpower.com

1C EUROPEAN UNION

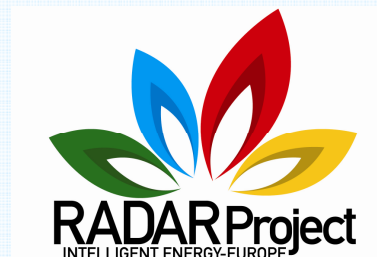
European projects can be structural (delivered within regions or countries) or transnational in their delivery. Transnational projects are developed and implemented by a consortium of organisations or individuals from different countries in the European Union.

Transnational Funding A I	
About	European programmes may fund bioenergy projects delivered by a trans-regional partnership i.e. involve more than one region and/or country. Structural funds e.g. the ERDF, ESF and RDPE benefit a single region

Coverage	European Union
Eligibility	Criteria for applicants, projects and costs are specific to programmes
Support	<p>Funding for transnational projects can vary from £500 to £3million and may or may not require match from another source. Some trans-national funds can offer up to 100% funding for travel and subsistence costs incurred with any exchange of best practice project. Depending on the Programme, funding may be restricted to travel and subsistence or contribute towards capital costs.</p> <p>Programmes include:</p> <ul style="list-style-type: none"> • Competitiveness and Innovation (CIP): <ul style="list-style-type: none"> • Entrepreneurship and Innovation (EIP) • ICT Policy support (ICT PSP) • Intelligent Energy Europe (IEE) • INTERREG • FP7 • Life+ • Lifelong Learning: <ul style="list-style-type: none"> • Leonardo da Vinci • Grundtvig • Erasmus • Comenius • Transversal study visits <p>See <i>advice & consultancy</i> for details of the West Midlands' dedicated support service on European funding, EU Connects.</p>
Next steps	European projects can be lengthy and involve several partners with application deadlines at least once a year. Applications must be submitted according to call priorities and deadlines
Information	<p>Web: www.euconnects.org Tel: EU Connects: 0121 245 0180 Email: euconnectsmarketing@wmlga.gov.uk</p>



RADAR
Raising Awareness
on renewable energy
Developing Agro-eneRgetic
chain models



Marches Energy Agency (MEA) received funding from the Intelligent Energy Europe programme to participate in the RADAR initiative as one of eleven partners from seven countries, project value €120k. This two-year project (2008 – 2010) identified potential bioenergy technologies for a study area based on a detailed evaluation of the site area, and with the aim of developing one idea to implementation. The area selected was close to Cleobury Mortimer, Shropshire. Study tours enabled knowledge transfer and through local consultancy, the West Midlands to benefit

2 Funding for Energy Crops

The funding available to establish energy crops is limited and as with all finance, subject to conditions. Reform of the Common Agricultural Policy (CAP) enables growers to claim payments against crops grown for energy end-use. The Energy Crops scheme offers funding toward crop establishment with the aim of stimulating the bioenergy market.

English Woodland Grant Scheme F	
About	<p>A grant scheme delivered regionally in England by the Forestry Commission (FC). It offers a suite of six grants and aims to promote the stewardship of existing woodlands and creation of new woodlands, with the aim of maximising public benefits. The FC also administers legacy grant schemes such as payments under the Farm Woodland Premium Scheme, now closed to new applicants.</p> <p>This scheme is part of the RDPE 2007 – 13, a programme for land based businesses (farmers, growers, foresters, and primary processors), rural tourism organisations and other small rural businesses</p>
Coverage	England
Eligibility	<p>Applicants must be registered on the Customer Registration (CR) and the land on the Rural Land Register (RLR). Where this is not the case, it will be carried out automatically by the FC as part of the application process</p> <p>The Woodland Management Grant requires woodland properties over 30ha to be certified to the UK Woodland Assurance Standard. Those under 30ha must either be certified, have a management plan or have the WMG Woodland Condition Statement and associated Opportunity & Threat Assessment satisfactorily completed</p>

Support	Category	Grant	
	Stewardship of existing woodlands	Woodland Planning (WPG)	Producing management plans that both assist with management of the woodland, and meet the UK Woodland Assurance Standard
		Woodland Assessment (WAG)	Undertaking specified assessments to collect further information, if required by the Forestry Commission to inform decisions on work
		Woodland Regeneration (WRG)	Supporting desirable changes in woodland composition within the normal cycle of felling and woodland regeneration
		Woodland Improvement (WIG)	Funds capital investment in woodlands to create, enhance and sustain the quantity and quality of public benefits
		Woodland Management (WMG)	Contribution to additional costs of providing and sustaining higher-quality public benefits from existing woodlands
	Creation of new woodlands	Woodland Creation (WCG)	Competitive grants available on a regional basis to support the establishment of new woodlands that meet national and regional priorities and sustain public benefits. Fixed grant per hectare depending on grant category and whether broadleaves or conifers are to be planted
Guidance is available for farmers on grants for woodland creation and management under the Environmental Stewardship and English Woodland Grant Scheme at (www.forestry.gov.uk/forestry/inf6d-fky)			
Next steps	The 2008 prospectus setting out the 2009/10 grant budget can be obtained from the website and from FC Regional offices		
Information	Web: www.forestry.gov.uk/ewgs Tel: 01223 346004		

Energy Crops Scheme F	
About	<p>A grant scheme increase the amount of energy crops grown in England, in appropriate locations, and activity related to biomass energy delivery and supporting the supply chain</p> <p>This scheme is part of the RDPE 2007 - 2013, a programme for land based businesses (farmers, growers, foresters, and primary processors), rural tourism organisations and other small rural businesses</p>
Coverage	England
Eligibility	Sole traders, cooperatives, partnerships, private limited and public limited companies. Eligible crops include perennial crops, miscanthus and short rotation coppice of willow and poplar in addition to slower-growing traditional coppice trees (ash, alder, hazel, silver birch, sycamore, sweet chestnut, lime). Minimum planting areas apply.
Support	<p>Up to 40% of eligible costs based on actual, verifiable costs (suppliers/contractors costs) and on-farm costs (use of farm labour and machinery)</p> <p>An opportunity map identifies appropriate and non-appropriate crop growing areas, and where additional environmental care should be taken: www.defra.gov.uk/farm/crops/industrial/energy/opportunities/wm.htm</p>
Next steps	Applications accepted throughout the year however if received after 30 th September, it is not guaranteed they will be processed in time for the next

	planting season. A helpful guide and form are available online for return by post. The grant is paid once planting can be evidenced; this may be in two-payments if significant pre-planting work is required
Information	Web: www.naturalengland.org.uk/planning/grants-funding/energy-crops/default.htm Tel: 01609 767400 Email: ecsqueries@naturalengland.org.uk

Energy Aid Payments Scheme – Single Payment Scheme F	
About	Following the CAP reform, growing energy crops on non-set aside land for use in the production of energy (electricity, heat or transport) may attract an energy aid payment in addition to payments under the Single Payment Scheme This scheme should not be confused with the Energy Crops Scheme included in the RDPE
Coverage	UK
Eligibility	Collectors and first time processors must be registered with the Rural Payments Agency. Eligible products include biofuels, electricity or heat energy produced from biomass. All crops for energy purposes qualify including some perennial, permanent and multi-annual crops. Annual crops grown under contract for energy use must meet the representative yields that have been set for 2008. Payments cannot be claimed for crops grown on set-aside land. Applicants should check the Regulations for eligibility of crops and end products. The same crops cannot receive funding from both the Energy Aid Payments and Energy Crops Schemes
Support	An annual aid payment of €45 per hectare is available for growing crops on non set-aside land.
Next steps	Aid will be paid to growers once a declaration on form ENC 9 has been made and all requirements fulfilled. For biennial and multiannual crops, it is possible to claim aid in each year of cultivation
Information	www.rpa.gov.uk Tel: 01392 266466 Email: nonfoodcrops@rpa.gsi.gov.uk using 'Energy Crops' as the heading

3 Funding for Supply Chain

Financial support for developing supply chain infrastructure is available from funding programmes introduced specifically for this area. Infrastructure and other costs may also be eligible under more general grant schemes as are included in section 1 of this guide.

Bioenergy Infrastructure Scheme I	
About	Grant scheme for the establishment of bioenergy supply chains needed to harvest, store, process, and supply to heat, CHP, and electricity end-users
Coverage	UK
Eligibility	<p>Farmers, foresters, businesses, local authorities and charities that are:</p> <ul style="list-style-type: none"> • Growers: to set up producer groups to supply eligible biomass, including legal or administrative costs, rental of office space, purchase or rental of IT and office equipment etc. (short-rotation coppice groups are funded under Defra's Energy Crops Scheme) • SMEs and producer groups: already supplying biomass or diversifying into supply for the first time, or diversifying into a different type of eligible biomass, covering equipment purchase or rent for harvesting, pre-use processing, quality assurance, handling, to purchase or rent storage and hard-standing, or receive training <p>Guidance notes include further details on eligibility</p> <p>Projects located in EU Objective 1 or Transitional Objective 1 areas and that have or expect to receive funded, are not eligible</p> <p>Grant applications should include more than one type of biomass</p>
Support	Currently closed to applications however a further round is expected in winter 2008, subject to funds being available. The maximum grant in past years was £200k with varying thresholds for different elements
Information	<p>Web: www.defra.gov.uk/farm/crops/industrial/energy/infrastructure.htm Tel: 01355 593800 Email: help@beis.org.uk</p>

Case Study: BICAL/BiEcc

BICAL was established to provide renewable and profitable diversification for farmers and landowners, through supplying growers with Miscanthus planting material, developing a wide range of end use markets and providing contractual and crop marketing support. Funding from the Bioenergy Infrastructure Scheme enabled in 2006 the establishment of four producer groups or 'fuel consolidation businesses' around the country to meet the energy crop demands of power companies – BiEcc located in Staffordshire. These businesses provide a mechanism for growers to contract and supply collectively to an end-user, enabling them to claim the 40% crop establishment grant from the Energy Crops Scheme. Information on BICAL is available at www.bical.net

Grow with Wyre I	
About	A three-year landscape partnership scheme launched Autumn 2008 to restore the Wyre Forest landscape, celebrate its history, help bring it back into active management, and stimulate interest in and a market for woodland crafts and projects. Funded by the English Woodland Grant Scheme, the programme and partnership are being led by the Forestry

	Commission
Coverage	Grow with Wyre project area (see website)
Eligibility	Eligible projects must: <ul style="list-style-type: none"> • Meet general criteria and conditions for the Woodland Improvement Grant (see <i>English Woodland Grant Scheme</i>) • Woodland must be within the Grow with Wyre project area
Support	Funding is available in a number of project areas including: <ul style="list-style-type: none"> • To contribute to restoration work within the Wyre including to begin bringing Woodlands back into active management • To stimulate interest in and a market for woodland crafts and projects – wood fuel, firewood etc. <p>£180k is available over the three years 2008-9, 2009-10 and 2010-11 to cover up to 80% of standard costs.</p>
Next steps	Website or via contact
Information	Web: www.forestry.gov.uk/growwithwire Gail Atkinson Tel: 01584 813822 Email: alison.coggon@forestry.gsi.gov.uk

Infrastructure Grant Programme G H I	
About	A Department for Transport (DfT) grant scheme toward investment costs for installing refuelling or recharging stations for alternative fuels
Coverage	UK
Eligibility	Funding is available for hydrogen, electric, E85 bioethanol, natural gas/biogas stations and other non traditional fuels
Support	Natural gas, biogas, hydrogen and bioethanol pump projects can claim up to 30% of installation costs; 40% for electric recharging points. An additional of up to 10% is available to certain regions and SMEs. Projects that have already received public funding are not eligible.
Next steps	The programme is in review pending State Aid approval. Expressions of interest are being registered and grants will be announced on the website.
Information	Web: www.cenex.co.uk/igp_index.asp Tel: 01509 635750 Email: igp@cenex.co.uk

See also *Rural Enterprise Grant* and the *Strategic Investment Grant* in *Grants for Environmental Improvement*

4 Funding for Research, Development (R, D & D) & Demonstration

Research and development is important to bring forward new ideas to the market in bioenergy such as in the initiation or improvement of a particular technology or process. Development can also be about the progression of an existing idea or approach to a new level. Investment enables businesses and opportunities with potential for commercialisation and/or for economic, social and environmental gain to move forward to demonstration. Partnership projects can bring mutual benefit through the sharing of skills and expertise.

Ashden Awards A	
About	An award for innovative sustainable energy schemes that have been running for at least a year to enable promotion and development
Coverage	UK
Eligibility	Energy businesses, local authorities and charities. Separate awards for UK Schools and small enterprises in Africa, Asia and Latin America. Must be replicable and of clear social, economic and environmental benefit, and with clear plans for use of funding
Support	First prize of up to £30,000 and second prizes of up to £15,000 in each category toward promotion and future development
Next steps	Annual deadlines for Expressions of Interest. Short-listed applicants proceed to the full application stage
Information	Web: www.ashdenawards.org Tel: 020 7410 7023 Email: info@ashdenawards.org

Case Study: Dulas, Powys, Wales

Dulas is a business offering diverse renewable energy services including in micro-hydro, wood-fired heating (design, installation and management) and wind (monitoring and environmental impact assessment). In solar energy, Dulas installs PV systems in the UK and provides wholesale supplies to other installers, and also supplies about three quarters of the world demand for PV-powered vaccine refrigerators, to organisations such as the WHO and UNICEF. It received the business award in 2008 (www.dulas.org.uk)



BERR Support for Business R&D	
About	<p>The Government has taken a number of steps to provide greater R&D support for business including:</p> <ul style="list-style-type: none"> • R&D Tax Credits for SMEs (see 'other support') • Collaborative Research and Development: part funding to encourage the exploration of ideas at an early stage of development with a view to commercialisation • Knowledge Transfer Networks: financial support for organisations that have the capability to establish or enhance Networks <p>Collaborative and Network funding is available under the Technology Strategy and is therefore State Aid. R&D tax credits cannot be received for projects funded through these programmes. However, a claim can be made under the large company R&D tax credit scheme for the whole of a company's eligible R&D costs - whether paid for by its own contribution or by Technology Strategy funding</p>
Coverage	UK
Eligibility	All business
Support	See individual programmes below
Information	Web: www.berr.gov.uk/dius/innovation/randd/support-for-business-randd/page11353.html

BERR Technology Programme: Knowledge Transfer Networks (KTNs) A	
About	KTNs have been established and funded by government, industry and academia to bring together diverse organisations and provide activities and initiatives that promote knowledge exchange and stimulate innovation
Coverage	UK
Eligibility	Network contacts can advise on eligibility
Support	Partners in KTNs can respond to competitions as part of a consortium. Competition calls open to applicants are listed on the website.
Next steps	Current KTNs are listed on the website and include 'Bioscience for Business'. Those interested in joining a Network should refer to individual websites for contact details.
Information	Web: www.ktnetworks.co.uk/epicentric_portal/site/KTN/?mode=0 Tel: Helpline: 01355 272155

BERR Technology Programme: Collaborative R&D A	
About	Part funding to encourage businesses to explore ideas that are at an early stage of development with a view to eventual commercialisation
Coverage	UK
Eligibility	Projects must involve two or more collaborators, at least one of which is from industry. Other criteria are published on the website
Support	<p>The Technology Programme supports three categories of research:</p> <ul style="list-style-type: none"> • <i>Pure or oriented basic research</i>: experimental or theoretical work undertaken prior to acquiring knowledge of phenomena foundations and observable facts, without application or anticipated use • <i>Applied research</i>: encompasses original investigation carried out to acquire new knowledge directed primarily towards a specific

	<p>practical aim or objective. May involve the creation of a project to take forward the results of a basic research programme</p> <ul style="list-style-type: none"> • <i>Experimental development</i>: systematic work that draws on existing knowledge gained from research and practical experience and that is directed to producing new materials, products and devices; to installing new processes, systems and services; or to improving substantially those already produced or installed
Next steps	Details of current competitions are published on the website
Information	Web: www.innovateuk.org/deliveringinnovation/collaborativeresearchanddevelopment.ashx

BERR Grant for Research & Development A

About	A technology programme for individuals starting up businesses and SMEs already based in England to carry out R&D work on innovative products and processes, administered by Regional Development Agencies (AWM)
Coverage	UK
Eligibility	Business
Support	<p>Four categories of grant are available, all requiring a contribution from the applicant toward project costs:</p> <ul style="list-style-type: none"> • Micro-projects: (fewer than 10 employees) up to £20k for simple, low-cost development projects lasting up to a year • Research projects: (fewer than 50 employees) up to 100k for investigating the technical and commercial feasibility of innovative technology over a six – eighteen month period • Development projects: (fewer than 250 employees) up to £250,000 to develop a pre-production prototype of a new, technologically advanced product or process over last 6 – 36 months • Exceptional development projects: up to £500k for significant and strategically important technological projects over 6 – 36 months <p>Projects based in assisted areas may benefit from higher rates of grant</p>
Next steps	Applications for funding should be made to the Regional Development Agency responsible for the region in which the project will take place – Advantage West Midlands in the West Midlands
Information	Web: www.westmidlandsfinance.com Phil Extance, Director of Innovation Tel: 0121 503 3281 Email: philextance@advantagewm.co.uk

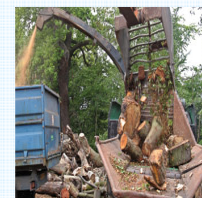
Carbon Trust Applied Research Programme A

About	Applied research grants to support the development and commercialization of carbon reduction technology toward large-scale deployment
Coverage	UK
Eligibility	Any UK business, university, public sector or voluntary organisation
Support	Grants of up to £500k toward eligible project costs, requiring a minimum 40% match funding. There is no minimum threshold however projects with a value of less than £50k are unlikely to be successful

Next steps	<p>Details and dates of forthcoming calls will be published on the website and are expected to open in winter and summer 2009:</p> <ul style="list-style-type: none"> • Winter: 16th February - 16th April • Summer: 22nd June - 20th August <p>The application process is two-stage: an initial online application form followed by a full proposal</p>
Information	<p>Web: www.carbontrust.co.uk/technology/appliedresearch/ Tel: 0800 085 2005</p>

Case Study: London Borough of Croydon

The Carbon Trust, in 2004, supported the London Borough of Croydon and the BioRegional Development Group with Applied Research grant funding of £68k, which would co-ordinate both the supply and delivery of heat power through processing local woodchip resources. This was later augmented by an additional £6,000 grant.
www.carbontrust.co.uk



Distributed Energy Support Programme A	
About	An Energy Technologies Institute (ETI) funding and development programme to accelerate distributed low carbon technologies from research toward commercialisation
Coverage	UK
Eligibility	Any organisation, but aimed at multi-organisation consortia
Support	<p>Projects generally £5million - £10million, funded at up to 100%. Typical projects focus on:</p> <ul style="list-style-type: none"> • Energy conversion devices • Energy storage systems • Integrated systems for maximum efficiency and lowest through-life cost • CHP modularisation and cost reduction • Integrated energy supply processing, such as anaerobic digestion, gasification of waste, utilisation of waste gases <p>This list is non exhaustive</p>
Next steps	Details of calls and Technology Programmes will be published with the ETI's strategy, in early 2009
Information	<p>Web: www.energytechnologies.co.uk/Home/Technology-Programmes/Distributed-Energy.aspx Tel: 01509 202020 Email: de@eti.co.uk</p>

Eurostars A	
About	European grant programme that aims to stimulate involvement by SMEs in international collaborative research and innovation on all technologies
Coverage	UK

Eligibility	Applicants must be based in one of the 31 countries participating in the Eurostars Programme, fulfil EU-adopted definition of an SME, and invest a minimum 10% of full-time equivalent or annual turnover in research activities. Projects must have a civilian purpose and be aimed at developing a new product, process or service
Support	Up to 50% eligible costs
Next steps	Register online to access application documents and deadlines. Calls are open twice a year.
Information	Web: www.eurostars-eureka.eu/ Pete Munday Tel: 01793 44 27 50 Email: pete.munday@tsb.gov.uk

National Endowment for Science, Technology and the Arts (NESTA) A

About	Independent policy body providing venture capital to businesses toward the development of innovative ideas in technology areas, including environmental technologies
Coverage	UK
Eligibility	Criteria is available from the website - individuals, charities or for student bursaries are not eligible
Support	NESTA Ventures provides early-stage capital to businesses in engineering, environmental technology, healthcare, and ICT NESTA Capital invests in early-stage funds as a limited partner or co-investor and may consider acting as a cornerstone investor
Next steps	Registration and submission of the application form must be completed online
Information	Web: www.nesta.org.uk Tel: 020 7438 2500

Natural Environment Research Council (NERC) A F I

About	UK's main agency for funding and delivering independent research, training and knowledge exchange in the environmental sciences
Coverage	UK
Eligibility	Information on eligibility for studentships, fellowships, research grants and institutions is available from the website
Support	Awards are available in the following areas: <ul style="list-style-type: none"> • Studentships – funding for PhD and Masters students through research centres • Fellowships – enable scientists to dedicate time to research • Research grants – responsive research, programmes, and knowledge exchange • Basic support – infrastructure and investment for research projects
Next steps	Applications must be submitted using the Research Councils' Joint electronic-Submission system (Je-S). The applicant's research organisation must first be Je-S registered. The assessment process is described in detail on the website
Information	Web: www.nerc.ac.uk/ Tel / Email for areas available on website

Regional Funding and Support for Businesses A F I	
About	A range of grants providing businesses with funding and/or support is available through the Regional Development Agency (AWM) and Business Link. Many of these are relevant to new and existing bioenergy businesses Regional venture capital and other mechanisms are included in sections
Coverage	West Midlands
Eligibility	All types of business, variable between services
Support:	
Proof of Concept	Supports established and start-up businesses developing innovative new products and processes and assists in spin-out of new enterprises from universities. For investigation, advancement and protection of early stage innovative business ideas and commercialisation of innovations. Energy technology is one priority area
Information	Web: www.warwicksciencepark.co.uk/support_services/AdvantageproofofconceptsFund.htm
Grant for Business Investment (GBI)	£10k - £2m for businesses located in Assisted Areas to support their expansion, modernisation, rationalisation and diversification. The website includes a postcode tool to determine eligibility
Information	Web: www.advantagewm.co.uk/working-with-us/selective-finance-for-investment-in-england.aspx
Next steps:	
The finance portal www.westmidlandsfinance.com is the most comprehensive source of information about all types of business finance in the West Midlands. Businesses should contact Business Link for advice on eligible support	
Information	Web: www.businesslinkwm.co.uk Tel: 0845 113 1234 Email: info@businesslinkwm.co.uk

Shell Springboard A	
About	A small business award toward the development of an innovative, low carbon project or service in response to climate change
Coverage	UK
Eligibility	Projects must lead to a reduction in greenhouse gas emissions, be innovative and commercially viable
Funding	Businesses could, in 2008, receive up to £40,000 toward eligible costs. A further round of applications is expected summer 2009 The 'Leaf Log' project was a regional finalist of Shell Springboard in 2008 (see <i>Business Link in Consultancy & Advice</i> for the full case-study)
Next steps	Sign up for a free Springboard User Account to receive automatic updates on awards and newsletters
Information	Web: www.shellspringboard.org Tel: 0870 850 7085 Email: help@shellspringboard.org

5 Other Financial Support

5A MAJOR FINANCIAL MECHANISMS

The major financial mechanisms for renewable energy technologies form a part of national policy and programmes. They include financial mechanisms designed to stimulate market growth in one or more technology areas. Duration of mechanisms is variable however is often long-term and associated with wider targets such as within Europe or under the Kyoto Protocol on greenhouse gases.

Renewables Obligation (RO) and Certificates (ROCs) B C D H	
About	All suppliers of electricity are required by Government to source a proportion of supply from accredited renewable resources, the proportion rising in yearly increments towards targets of 10.4% in 2010 and 15.4% by the end of 2016. The RO will continue until at least 2037.
Coverage	UK
Eligibility	Eligible renewable sources include landfill gas, sewage gas, co-firing biomass, other biomass and energy crops. Suppliers can meet a maximum 10% of their obligation from co-fired ROCs
Support	<p>A revision to the Obligation in 2008 means that from April 2009 technology bands will be introduced, offering different numbers of Renewables Obligation Certificates (ROCs) depending on the technology and fuel. This replaces the initial arrangement with all awarded equally</p> <p>Bioenergy technologies (ROC/MWh):</p> <ul style="list-style-type: none"> • Microgeneration technologies of less than 50kW receive 2 ROCs • Biomass energy crops receive 1 ROC if co-fired in coal generation, 1.5 ROCs in a dedicated biomass plant, and 2 ROCs in a generator fitted with a CHP system • Other biomass (co-products e.g. straw, forestry and green waste) receive 0.25 ROCs if co-fired in coal electricity generation, 1.5 ROCs in dedicated biomass generation, and 2 ROCs in CHP, with biogas or another gasification technology <p>The RO is a trading mechanism within which suppliers failing to fulfil their obligation can instead to pay the 'buy-out' price, plus the Climate Change Levy against non-renewable power. ROC values will fluctuate with market conditions and availability of capacity. At the end of an Obligation period, the 'buy-out' fund is recycled back to ROC providing generators</p>
Next steps	<p>Every unit of electricity generated will attract ROCs and therefore provide income when sold. These ROCs are provided to the purchaser as part of the sale together with any Levy Exemption Certificates (LECs) (see <i>Climate Change Levy</i>).</p> <p>Generators must register with the regulator Ofgem to obtain ROCs and LECs. Application forms are available at www.ofgem.gov.uk.</p>

	<p>The following measures are intended to help microgenerators participate in the RO market include:</p> <ul style="list-style-type: none"> • Allowing submission of ROC claims on a monthly or annual basis, rather than the monthly requirement of larger generators • Allowing generators to appoint an agent to sell ROCs on their behalf • Ending the 'sell and buy back' requirement meaning generators can use electricity generated on-site without first having to sell it • Enabling microgenerators to sell surplus electricity to energy companies (providing an export meter is installed). The value offered however is variable and not all energy companies will do so
Information	<p>Web: www.berr.gov.uk/whatwedo/energy/sources/renewables/policy/renewables-obligation/page15630.html Tel: 020 7215 5000 Email: renewable@ofgem.gov.uk</p>

Feed-in Tariff D	
About	<p>The UK Energy Bill will award Government power to introduce a new mechanism to support renewable energy in the form of a 'feed-in tariff', however will not set the details. The system will be 'piggy-backed' on the existing electricity licensing system meaning that licensed suppliers will pay small-scale power generators for their power, either directly or via the regulator Ofgem.</p> <p>The expected date of introduction is during 2010 following consultation in summer 2009.</p>
Coverage	UK
Eligibility	It is proposed the tariff be applied to wind, solar, hydro and could also include CHP systems. The tariff will be available for both homes and businesses generating electricity on-site.
Support	The tariff will offer generators (below 5MW cap) a guaranteed long-term price for their power. It is likely that different renewable energy technologies of different sizes will receive different price.
Information	To be announced

Renewable Transport Fuel Obligation (RTFO) and RTF Certificates G	
About	A legal obligation on fuel suppliers to ensure a certain percentage of aggregate sales is made up of biofuels, continuing until at least 2020. The effect of this will be to require that 5% of all fuel sold on UK forecourts comes from a renewable source by 2010. Companies must fulfil their obligations or pay the buy-out price which will go into a buy-out fund.
Coverage	UK
Eligibility	Eligible fuels are those qualifying for fuel duty exemption i.e. biodiesel and bioethanol, in addition to biogas. The Obligation applies only to fuels used in road transport and not all transport fuels i.e. maritime, rail and aviation
Support	Benefits for biofuels include carbon savings, diversity in energy supply, and for the rural economy. The price differential between UK and imported feedstocks means however, that UK farmers will only benefit if/when cheaper imports become less available.

	As a trading mechanism, companies certified as exceeding their obligation can sell excess certificates to those failing to fulfill the required 5%
Next steps	Producers must register online with the administrator (the Renewable Fuels Agency) to receive RFT certificates for each qualifying litre.
Information	Web: www.dft.gov.uk/pgr/roads/environment/rtfo/

Renewable Heat Incentive A	
About	An incentive for suppliers of renewable heat is included in the Climate Bill however the date of introduction is still to be announced. Subsidies will be provided to any supplier of heat or fuel to be used for heating purposes
Coverage	UK
Eligibility	Proposed that the incentive be available for the use of heat at all scales
Support	The incentive will be paid for by fossil fuel suppliers however could also be a levy administered by Ofgem. Scheme structure will be confirmed after a consultation period, launched in the Heat and Energy Efficiency Strategy
Information	Details of the Renewable Heat Incentive will be drawn up within secondary legislation in 2009

5B VENTURE CAPITAL

Venture capital is a type of private equity typically provided to new or early stage businesses with a recognised growth potential and in the interest of generating a return. Investments are generally offered in return for shares in the beneficiary.

Carbon Trust Venture Capital Funds A	
About	The Imperial Low Carbon Seed Fund and Clean Energy Fund provide equity for clean energy technology projects, leveraged with other private funding
Coverage	UK
Eligibility	The business plan must all areas of investment criteria
Support	Imperial Low Carbon Seed Fund: investment of up to £250k in any UK-based clean energy business seeking its first major financing round. Transactions are typically up to £1m in size. Clean Energy Fund: typical investment between £250k and £3 million in a business, with the average transaction-size being between £500k and £10 million. The maximum investment is 50% in any one transaction
Next steps	Investment and clean energy criteria are listed on the website and should be reviewed prior to submission of a business plan. An executive summary of the plan should be sent to invest@carbontrust.co.uk
Information	Web: www.carbontrust.co.uk/investments/venturecapital/introduction.htm Tel: 020 7170 7000 Email: invest@carbontrust.co.uk

Energy4All and Share Energy (Cooperative F.i.R.E) A	
About	See <i>Advice and Consultancy</i> for further details, both offering opportunities for share purchasing in community renewables schemes

Venture Capital for Businesses in the Region A	
About	A range of equity based finance packages are available through the Regional Development Agency (AWM) and Business Link. Many of these are relevant to new and existing bioenergy businesses Details of Regional grants and other support is included in sections
Coverage	West Midlands
Eligibility	All types of business, variable between services
Support:	
Mercia Technology Seed Fund	Invests £50,000 - £250,000 post proof of concept opportunities, but with demonstrable commercial interest in technology under development
Information	Web: www.merciafund.co.uk/
Advantage Early Growth Fund	Venture capital co-investment fund for early stage businesses with growth potential. Matches risk capital provided by Business Angels or other private sector investors on same terms
Information	Web: www.aegf.co.uk/
Advantage Growth Fund	Venture capital investing up to £500k in SMEs from start-up to MBI's and in any sector, with a particular interest in environmental technologies
Information	Web: www.midven.com/
Advantage Enterprise & Innovation Fund	Equity Capital of £200k - £1m, matched by similar or greater amount from private investors. All businesses eligible from early-stage to development capital, including MBO's and MBI's
Information	Web: www.catapult-vm.co.uk/aeif_fund.shtml
Business Angel Networks	
Beer and Partners	Venture capital and business angel investment for growing SME businesses
Information	Web: www.beerandpartners.com/
Central England Business Angel Network	Investment in commercial viable businesses as a share, also sharing financial risk
Information	Web: www.centralenglandbusinessangels.com/
Minerva Business Angel Network	Assists established businesses raise investment for expansion, and emerging businesses in start-up and growth, including MBOs and MBIs, by raising finance from banks, venture capital funds and business angels in the Minerva Business Angel Network
Information	www.minerva.uk.net/
Other sources of equity	
Investbx	Assists SMEs raise up to £2m in equity finance by introducing them to a wide investor base. Incorporates stock market for SMEs
Information	Web: www.investbx.com/about/default.aspx
Next steps:	
The finance portal www.westmidlandsfinance.com is the most comprehensive source of	

information about all types of business finance in the West Midlands.	
Businesses should contact Business Link for advice on eligible support	
Information	Web: www.businesslinkwm.co.uk Tel: 0845 113 1234 Email: info@businesslinkwm.co.uk

Triodos Bank A	
About	Ethical bank offering financial services and investment to individual, businesses and charities, including venture capital and share purchasing
Coverage	UK
Eligibility	Variable between services however the key criteria for projects is environmental benefit
Support	<ul style="list-style-type: none"> • Banking services • Raising capital – lending, and securing private capital • Venture Capital for social and environmental businesses • Triodos Opportunities Fund – social enterprise equity fund • Triodos Renewables – works with and offers shares in renewable energy projects
Next steps	Contact the relevant team to discuss requirements
Information	Web: www.triodos.co.uk Customer services Tel: 0500 008 720 Email: customerservices@triodos.co.uk Business banking Tel: 0800 328 2181 Email: businessbanking@triodos.co.uk Venture Capital Email: whitni.thomas@triodos.co.uk Triodos Opportunities Fund Email: whitni.thomas@triodos.co.uk Triodos Renewables Tel: 0117 980 976 Email: renewables@triodos.co.uk

5C LOANS & FINANCE

Banks and other financial institutions, and government programmes, may offer advice on financial management and access to support mechanisms such as loans or special interest accounts. Many banks will have a specialist team dedicated to rural businesses and agriculture and all offer services specifically for business.

Banks & Building Societies A F I	
About	Many UK banks and building societies operate their own financial support programmes and initiatives for environmental projects and technologies, including in farming and agriculture e.g. interest-free or reduced interest loans, grants and investment. The majority also employ agricultural banking advisers to provide specialist, specific advice
Coverage	UK
Eligibility	Priority areas and eligibility sectors and criteria vary widely but are available from websites or by contacting the banks and societies
Information	Contact local branch to discuss requirements and for information Guidance is available from Business Link Web: www.businesslinkwm.co.uk Tel: 0845 113 1234 Email: info@businesslinkwm.co.uk

Carbon Trust Energy Efficiency Loans Scheme B C D	
About	A scheme offering interest free loans to businesses for installing energy efficiency and renewable energy technologies
Coverage	UK
Eligibility	SMEs can apply however state aid rules prohibit those in the transport and certain agricultural sectors or export-related activities. Projects must exceed the carbon-saving threshold of 2.57tCO ₂ for the minimum £5k (an online Loan Calculator is available) and pay-back the investment within 5 years through energy-saved. Any falling below may be offered a part loan providing it is not matched by an additional funding source
Support	Businesses can borrow from £5k to £20k to be repaid in monthly instalments by direct debit based on financial savings from energy saved
Next steps	Apply online at www.carbontrust.co.uk/loans
Information	Web: www.carbontrust.co.uk/energy/takingaction/loans_renewables.htm

Bretby Business Park, Staffordshire

Based near Burton on Trent, Bretby Business Park is home to 75 separate tenants on the 35 acre former British Coal R&D plant. The Park was formerly heated by three inefficient and uneconomical coal fired boilers located in a central boiler house, contributing to annual energy costs of £400k. Advice from the Carbon Trust identified potential £180k savings from replacing the central with individual boilers, able to respond to local heat demands. Assisted by an interest free loan of £50k, the investment will have paid back in just over three and a half years from savings in energy bills.

Regional Funding and Support for Businesses A I	
About	A range of loans providing businesses with funding and/or support is available through the Regional Development Agency (AWM) and Business Link. Many of these are relevant to new and existing bioenergy businesses
	Details of Regional grants and venture capital is included in sections

Coverage	West Midlands
Eligibility	All types of business, variable between services
Support:	
Arrow Fund	Unsecured loan from £1000 - £7500 for start-ups and existing businesses. Available for working capital purposes and/or equipment purchase and must create or safeguard a job
Information	www.arrowfund.co.uk/
Community Development Finance Institutions (CDFIs)	Loans toward new small business start-up and existing businesses and Social Enterprises who may have difficulty accessing loans from traditional sources. Includes rural regeneration and those with a positive environmental impact
Information	Web: www.fair-finance.net/home.asp
Next steps:	
The finance portal www.westmidlandsfinance.com is the most comprehensive source of information about all types of business finance in the West Midlands.	
Businesses should contact Business Link for advice on eligible support	
Information	Web: www.businesslinkwm.co.uk Tel: 0845 113 1234 Tel: info@businesslinkwm.co.uk

5D Energy Services (Invest to Save)

Energy services schemes can take various forms but generally involve the sharing of finance or other risk with an investor e.g. a renewable energy developer, for a return. As an example, a developer may own all or a share of an installation at an end-user's premises, and recoup their investment over time from resultant savings in energy costs

Econergy Ltd. B	
About	A UK biomass boiler supplier also offering design and consultancy, and the ecoheat energy services package
Coverage	UK
Eligibility	Projects primarily large scale in public sector, business and industry also eligible
Support	<p>There are three main options available as part of the Ecoheat energy services package:</p> <ul style="list-style-type: none"> • Heat supply only: customer owns boiler, Ecoheat manages supply and maintenance and sale of heat (for plant 100kW+) • Heat supply and financing with repayment guarantee: as above with boiler financed through bank and contract with Econergy • Heat supply and finance: owner bears demand and operating risk <p>Econergy also offers boiler installation and design and consultancy on specification of biomass heat and CHP installations, feasibility studies for heat and power generation projects, supply chain development and</p>

	strategic studies
Next steps	There is a biomass boiler enquiry form available online
Information	Web: www.econergy.ltd.uk Tel: 0870 0545 554 Email: admin@econergy.ltd.uk

Case Study: Worcestershire County Hall

In May 2002 Econergy installed a 700kW fully automatic wood fuelled boiler to provide 1 – 1.3 million kWh per year of heat for Worcestershire County Hall. The system consumes annually around 500 tonnes of locally sourced wood fuel avoiding some 490 tCO₂. Installation, maintenance, operation and fuel supply are all provided by Econergy under a ten-year *ecoheat* renewable energy supply contract. Renewable heat is then sold to the Council at a tariff competitive with that for fossil fuels.



Salix B	
About	An independent, publicly funded company set up to accelerate public sector investment in energy efficiency technologies through invest to save schemes. Biomass boilers may qualify for support if a cost effective improvement to the existing system
Coverage	UK
Eligibility	Local authorities, Higher Education, NHS Foundation Trusts and Central Government are eligible to apply Projects must comply with the following criteria: <ul style="list-style-type: none"> • Maximum 5 year payback period and £100/tCO₂ lifetime basis, for energy efficiency projects, or • Maximum 7.5 year payback period for projects with lifetime £/tCO₂ equal to or above £50, for approved energy efficiency and renewable projects • Must be identified as being additional Project compliance tools are available on the website
Support	A sum of up to £250,000 is available to be matched by private investment. The investment is paid back from savings in energy bills arising from the work after which all benefits can be retained Technical expertise is available through the delivery partners, Atkins
Next steps	Application deadlines are published on the website and further rounds anticipated in 2009. Deadlines vary between the four sector areas
Information	Web: www.salixfinance.co.uk Tel: 020 3043 8800 Email: info@salixfinance.co.uk

5E TAXATION

Taxation is applied by national Government to certain products and services including in the form of VAT (Value Added Taxation), Business Rates and Fuel Duty. Tax benefits have been introduced for qualifying bioenergy technologies and biofuels to stimulate the supply chain and market.

CHP Quality Assurance: Business Rates exemption D	
About	CHP plants are not fully exempt from paying business rates however, the Government has introduced preferential treatment under the business rates regime for Good Quality CHP plant
Coverage	UK
Eligibility	Detailed information is available from the CHPQA programme – Guidance Note 43 (www.chpqa.com/guidance_notes/GUIDANCE_NOTE_43.pdf).
Support	Business rates benefits for CHP generation
Next steps	Website or via contact
Information	Web: www.chpa.co.uk/about_chp/chp_support.shtml Tel: 0870 190 6196 Email: info@chp.co.uk

Climate Change Levy D	
About	A tax on energy use in industry, commerce and the public sector with exemptions for qualifying renewable and CHP generation
Coverage	UK
Eligibility	Purchasers of electricity generated from new renewable energy are exempt as is fuel used by “good quality combined heat and power” schemes, for the production of other types of energy, and electricity used in pyrolysis processes
Support	Levy exemption applies in relation to the evidenced proportion of energy sought from a qualifying source
Next steps	Purchasers must obtain Levy Exemption Certificates (LECs) from the renewable generator. LECs are awarded to generators apply to Ofgem to be awarded LECs using the same form and procedures as for Renewables Obligation Certificates (ROCs). (“Good Quality CHP” is CHP certified via the CHP Quality Assurance Programme CHPQA). Non-renewable electricity purchased is levied at a rate of 0.43p/kWh
Information	Web: www.ofgem.gov.uk

Enhanced Capital Allowances A	
About	Scheme providing enhanced tax relief to businesses as an incentive to invest in energy saving and renewable energy equipment
Coverage	UK
Eligibility	All businesses paying UK corporation or income tax can claim allowances on equipment, regardless of size, sector or location, except where assets are leased. Qualifying products are listed on the website and include most relevant to biomass energy use (not growing and harvesting) including

	CHP, boilers, pumps, motors, control systems, and pipe insulation
Support	100% first-year capital allowances on investments in qualifying energy-saving equipment against taxable profits for the investment period
Next steps	Claims are included in the normal tax return, accompanied by required documentation
Information	Web: www.eca.gov.uk Tel: 0870 190 6236 Email: ECAQuestions@carbontrust.co.uk

Fuel Duty Exemption for Biofuels G	
About	Exemptions for qualifying biofuels used in transport and heating compared to fossil fuels
Coverage	UK
Eligibility	Compliance testing is the responsibility of the producer
Support	Biodiesel and bioethanol used in road vehicles attracts a 20p reduction in excise duty against diesel and unleaded petrol rates. Biofuels used in a dual fuel tank may also be eligible. A reduced rate also applies to pure biodiesel intended for use other than as a road fuel, and to flex-fuel 'E85' vehicles. Biodiesel for use as a heating fuel or any other non-motor fuel use (including electricity generation) is not subject to duty. This support is guaranteed until 2010
Next steps	Current, previous rates and rate changes are available from the Her Majesty's Revenue & Customs website
Information	Web: www.hmrc.gov.uk

Reduced VAT for Microgeneration B C	
About	The installation of qualifying microgeneration and energy saving technologies attracts a reduction from the prevailing rate of VAT
Coverage	UK
Eligibility	Almost all microgeneration, including wood-fuelled boilers
Support	A reduced rate of 5% applies to the installation of certified microgeneration technologies
Next steps	The reduction is accounted for by installers in the cost of work
Information	Web: www.berr.gov.uk/whatwedo/energy/sources/sustainable/microgeneration/index.html

R&D Tax Credits A	
About	R&D Tax Credits are an incentive in the form of tax relief to increase business investment in R&D. They were introduced for SMEs in 2000 and large companies in 2002 for work carried out to resolve scientific or technological uncertainty with the aim of achieving an advance in science or technology
Coverage	UK
Eligibility	Credits are available to all companies with under 500 employees and spending over £10,000 per year on R&D; individuals and partnerships are not eligible. Projects funded through the Grant for R&D programme are also not eligible, unless the claim is submitted under the 'large company' credits scheme subject to meeting conditions

	Information on eligibility for the tax credit, along with guidance on how to claim them is available on the HM Revenue & Customs website. A simple, interactive tool is available to help determine eligibility (www.businesslink.gov.uk)
Support	Companies may deduct qualifying expenditure directly related to R&D activities when calculating their profit for tax purposes, including for the employment of staff, purchase of consumables and services
Next steps	Claims should be included in the company tax return (Form CT600). It is recommended first claimants seek advice prior to submission
Information	Web: www.hmrc.gov.uk/randd/


6 Support Programmes

6A WEST MIDLANDS: Environmental Improvement

There are a number of sources of advice and support on bioenergy available within the West Midlands. These may be associated with local or regional government, membership networks representing one or more sectors, or part of short or longer term projects. Information from these sources is generally free of charge or at an affordable cost and may be offered in conjunction with grant funding. Programmes can be short or longer-term in their duration.

Advantage West Midlands (AWM) A F I	
About	Advantage West Midlands is the Regional Development Agency (RDA) for the West Midlands responsible for economic development
Coverage	West Midlands
Eligibility	No restrictions
Support	The Agency commission consultancy and research projects on behalf of the Region including in land and property, sustainability, transport, rural issues, tourism and planning. With a large estate and building portfolio, it can provide opportunities for demonstration and by organising and sponsoring events and conferences, facilitate networking within and between sectors Relevant projects include the <i>West Midlands Non Food Crops Opportunity Mapping Study</i> , other examples listed on the website
Next steps	Website or via contact
Information	Web: www.advantagewm.co.uk Tel: 0121 380 3500

Bioenergy West Midlands (BioenergyWM) A F I	
About	Funded by Advantage West Midlands and delivered by Harper Adams

	University College, BioenergyWM aims to assist in the development of the Region's bioenergy sector
Coverage	West Midlands
Eligibility	No restrictions
Support	It provides information, networking opportunities, and coordinates events and knowledge forums. The website includes a database of case studies from the West Midlands and a library of informative documents
Next steps	Website or via contact
Information	Web: www.bioenergywm.co.uk Tel: 01952 815 019 Email: slarge@harper-adams.ac.uk

Biomass Energy Centre (BEC) B C D E F I	
About	The BEC aims to draw together information into a single web-base and information enquiry service to individuals, companies, local authorities and other UK organisations. It is owned and managed by the Forestry Commission
Coverage	UK
Eligibility	No restrictions, principally SMEs, public sector, farmers and foresters
Support	Comprehensive information and advice on practical issues including: using, producing and supplying biomass fuels, installation of systems, grants, and relevant policies, legislation and standards. Guidance is available on biomass delivery and storage, fuel quality, boiler sizing and costs Technical and practical information and advice is available including on the harvesting, processing and storage of wood and short rotation coppice Areas of technical advice include on different fuel types and conversion technologies, and information on best practice, existing installation, and links to biomass research and studies The website provides links to forthcoming events around the UK
Next steps	Website or via contact
Information	Web: www.biomassenergycentre.org.uk Tel: 01420 526197 Email: Biomass.Centre@forestry.gsi.gov.uk

Business Link West Midlands A F I	
About	Business Link West Midlands provides free support and advice services to assist all businesses with development, operation, management and growth, finance and grants, and to help make them 'investment ready'. The service works with agricultural, forestry and other specialists
Coverage	West Midlands
Eligibility	All business
Support	Services include: <ul style="list-style-type: none"> • Business information and research • Advice on improving business performance

	<ul style="list-style-type: none"> • Sign-posting to relevant solutions through quality assured suppliers • Improving the skills of employees • Specialist manufacturing advice • Assistance establishing a new business <p>Services are delivered through one-to-one support and via the website, newsletters, and databases of funding, case studies, publications, forms and training courses such as workshops, events and seminars. Computer-based training courses are available through Learndirect business.</p> <p>Specialist advisers are able to provide technical and practical advice and to sign-post to information on all aspects of the bioenergy supply chain</p>
Next steps	Website or via contact
Information	Web: www.businesslinkwm.co.uk Tel: 0845 113 1234 Email: info@businesslinkwm.co.uk

Business Link West Midlands: ‘Leaf Log’



‘Leaf Log’ is the brainchild of Peter Morrison, chief executive of Birmingham based Biofuels International Ltd and describes an eco ‘log’ consisting of up to 70% fallen leaves. The log has a calorific value of 27,840kj/kg and will burn for up to three hours, weighing just 1.2kg. With help from Business Link the firm secured the patent pending on the invention, and is waiting for exclusive rights to the trademark name. www.leaflog.com

Energy Saving Trust Advice Centre (ESTAC) B C	
About	The West Midlands ESTAC is part of a national network managed by the EST
Coverage	UK
Eligibility	All households, those with housing responsibilities
Support	Free, independent advice to households on sustainable energy technologies
Next steps	Website or via contact
Information	Web: www.lowcarbonbuildings.net/Energy-Saving-Trust-advice-centre-West-Midlands Tel: 0800 512 012 Email: advice-wm@hestiaservices.co.uk

EU Connects A F I	
About	EU Connects is the West Midlands’ dedicated, free advisory service providing information and support to organisations and individuals in the region interested in finding out about/applying to transnational European funding programmes i.e. involving more than one partner region
Support & Funding	EU Connects offers a range of services including: <ul style="list-style-type: none"> • Information events

	<ul style="list-style-type: none"> • Training workshops • Individual advice • Partner searching • Support with applications <p>A funding adviser is available on each of the CIP, INTERREG, Marie Curie and Lifelong Learning. A fifth will prioritise the rural areas of the Region</p>
Information	<p>Web: www.euconnects.org Tel: 0121 245 0180 Email: euconnectsmarketing@wmlga.gov.uk</p>

Heartwoods B C F I	
About	A West Midlands-based project offering grants and services to promote the use of wood fuel, supporting woodland businesses and encouraging management of neglected woodlands
Coverage	West Midlands
Eligibility	Project dependent
Support	<p>Heartwoods AONB 'Wood for Heat' project</p> <ul style="list-style-type: none"> • Farms and rural properties in Shropshire Hills and Malvern Hills AONB • Advice on wood fuel heating systems • 75% grant <p>Wyre Forest Wood fuel Pathfinder</p> <ul style="list-style-type: none"> • All sites in and around the Wyre Forest • Advice on wood fuel heating systems • Free site assessment: wood fuel sourcing, supply and use potential • Free feasibility studies for boiler installations • Guidance: grant applications and obtaining quotations for installers • Free website listings for wood fuel suppliers <p>The website provides links to wood fuel grants, suppliers and technical information, and news on events and courses around the Region</p> <p>Heartwoods intends to launch a new package of support services in late 2008/2009 pending confirmation of funding. Refer to the website for details</p>
Next steps	Contact Project Manager Andy Grundy to discuss requirements
Information	<p>www.heartwoods.co.uk Project Manager, Andy Grundy, andy@heartwoods.co.uk, 01952 432769</p>

Garnons Estate, Herefordshire

A 120kW VETO wood chip boiler was installed in 2006 at this country estate to heat the main house and swimming pool in place of two oil-fired boilers. The estate has an extensive woodland area which is sustainably managed to provide a range of timber products including wood fuel. The 200MWh of renewable energy generated every year avoids the emission of some 73tCO₂. The boiler was supplied and installed by Eenergy and the whole system cost just under £18k, including the new boiler house and its foundations. The project benefited from a 33% grant from a former grant scheme of Heartwoods and Marches Wood Energy Network (MWEN)



Low Carbon Communities for Business B C F I	
About	A programme of services to assist businesses in identifying and reducing their carbon footprint, including by developing bioenergy projects
Coverage	Bishop's Castle, Cleobury Mortimer, Ellesmere and selected communities south of Oswestry
Eligibility	SMEs including farmers and foresters
Support	Provides free advice, site visits , feasibility and resource studies in wood pellet, wood chip, wood waste and log fired heating/hot water systems or fuel manufacture and supply Small grants are also available for low carbon technology projects Available until April 2009 however further funding is being sought
Next steps	Website or via contact
Information	Web: www.lowcarboncommunities.org Tristan Haynes Tel: 01743 277107 Email: tristan@mea.org.uk

Pantglas Holiday Cabin, Shropshire



MEA's Low Carbon Communities for Business (LCCB) provided consultancy advice to Pantglas Holidays on low carbon options for a new log cabin self-catering development. Based on advice and A LCCB grant, Calimax Twist 80/20 room heating wood pellet stoves and a solar thermal system were installed. A back boiler serves 4 radiators, a hot tub and two showers. Together, these installations will save up to save five tonnes of CO₂ every year and up to £800 in energy costs. The total cost of the installations was £12,000.



Marches Energy Agency (MEA) A I	
About	The climate change and sustainable energy agency for the West Midlands and a registered charity. MEA delivers a portfolio of support projects across all sectors through its five teams: Project Carbon, Carbon Forum, Low Carbon Communities, Action Heat and Re:think Energy (see grants for equipment).
Coverage	West Midlands
Eligibility	No restrictions
Support	Project Carbon: Honest-broker, technical advice on sustainable energy technologies to households, businesses, organisations, farmers and community groups, and organises themed events. There is no charge for advice however feasibility and technical studies can only be undertaken at an affordable cost. The team has expertise in all aspects of bioenergy. MEA have developed a ' <i>wood fuel heating tool</i> ' that produces a simple report outlining the practicalities of using wood fuel in homes, SMEs or community buildings. This aims to give detail on annual fuel requirements, costs, and the storage space required for different types of wood-fuel and

	burner/boiler. Comparative CO ₂ and cost savings are also included.	
	Grants, training and support are available through Low Carbon Communities for Business, RE: think and Community Sustainability Energy Programmes (<i>see grants for environmental improvement</i>)	
Next steps	Contact MEA for support and programmes currently available	
Information	Marches Energy Agency (MEA) Web: www.mea.org.uk Tel: 01743 246007 Email: info@mea.org.uk	Project Carbon, 01743 277105 www.projectcarbon.org Tel: 01743 277105 Email: jeremy.thorp@mea.org.uk

RADAR B C D E I	
About	A European funded project delivered in the West Midlands by Marches Energy. It aims to accelerate the adoption of bioenergy
Coverage	Shropshire Hills AONB
Eligibility	No restrictions
Support	Resource studies, the establishment of local stakeholder groups, coordination of activities and feasibility projects are amongst the services available free of charge. All types of bioenergy are eligible however the project is particularly focused on community based AD and biomass heat
Next steps	Website or via contact
Information	Web: www.radarproject.eu Tristan Haynes Tel: 01743 277107 Email: Tristan@mea.org.uk

Shropshire Environmental Technologies Network (SEtNET) A	
About	The SEtNET brings together companies in Shropshire that work in the field of environmental goods and services. It is a membership organisation that offers a range of opportunities to members
Coverage	Shropshire
Eligibility	Membership of Network
Support	Services available to members include access to an EXTRA-net, networking and training events, free or discounted training courses and publications, regular updates via a quarterly newsletter, and inclusion on the SEtNET website and PR opportunities
Next steps	Contact SEtNET for membership details
Information	Web: www.setnetwork.co.uk/ Tel: 01743 252597 Email: membership@setnet.uk.com

Share Energy (Cooperative F.i.R.E.) A	
About	Support programme for community-owned renewable energy projects (Cooperative F.i.R.E until early 2009), delivered by Energy4All and funded by Advantage West Midlands
Coverage	Regional Regeneration Zone (RRZ) of Shropshire, Herefordshire and Worcestershire
Eligibility	No restrictions, principally businesses, communities and farmers

Support	<p>Share Energy provides the advice and support required by communities and local developers to own and operate a community-owned renewable energy project. It provides access to skills and experience in project design and to finance, and the opportunity to own a share in a local project. Initial information, advice, guidance and site inspections are undertaken free of charge following which projects are screened for suitability. Further, limited advice is available to those not suitable and sign-posting to alternative funding sources.</p> <p>The Westmill cooperative was the UK's first community-owned wind farm and a good case study example: www.westmill.coop</p>
Next steps	All enquiries should be directed to the project manager, Jon Halle
Information	<p>Web: www.cooperativefire.coop Tel: 07881 934 183 Email: jon.halle@energy4all.co.uk</p>

Warwickshire & Coventry Biomass Heating Supply Group B C D F I	
About	Established in 2006 to support and encourage organisations wanting to implement or investigate the potential for biomass heating systems, or be involved in the provision of fuel for any installed biomass system
Coverage	Warwickshire
Eligibility	No restrictions
Support	<p>A stakeholder group representing biomass issues within the area</p> <p>The <i>Warwickshire Biomass Market Development Report</i> was published in 2007 and is available from the website</p>
Next steps	Website or via contact
Information	<p>Web: www.warwickshire.gov.uk/biomass Tel: 01926 736324 Email: climatechange@warwickshire.gov.uk</p>

Boiler Sizing: Guidance and Tools B C D	
<p>Guidance on sizing, tools and worksheets are available online and from some manufacturer and installers, and in smaller properties such as households, the existing system can provide a rough guide. It is recommended however that those proposing an installation on their own site consult a qualified heating engineer.</p> <p>Example tools: Asgard Biomass (www.asgard-biomass.co.uk): online boiler sizing calculator Dunster Woodfuels Ltd (www.dunsterwoodfuels.co.uk): boiler sizing worksheet Farm 2000 (www.farm2000.co.uk): boiler sizing guide</p> <p>Whilst some installers may have existing agreements with consultant engineers, the majority will require the customer to provide this information</p>	

6B UNITED KINGDOM: Environmental Improvement

Advice and support on bioenergy projects is available from a range of programmes and sources that are not exclusive to the West Midlands, but available across the whole of the UK. The type of support available varies between individual example however will often include advice and guidance from best practice in areas such as funding, tools, implementation and dissemination.

Community Action for Energy (CAfE) A	
About	A support and small-grant programme for the community sector on renewable energy projects, managed by the EST
Coverage	UK
Eligibility	Community sector, communities and partners
Support	<p>The programme offers free support services on community projects to CAfE Network Members, from community buildings to community renewables</p> <ul style="list-style-type: none"> • Training sessions: for those involved in or wishing to start on community projects throughout the year and UK e.g. finding partners, energy auditing, management • Helpline • Funding database: available online, specific to CAfE programme, including private sector sources and charitable trusts • Monthly E-newsletter: distributed to network members • Annual conference: information, project promotion and networking <p><i>CAfE Community Chest</i> The fund offers a small grant of up to £200 toward a range of activities that will progress the energy saving project including travel costs, events, or the purchase of equipment. Grants are only available to organisations with an annual income of less than £75k and where no other suitable funding sources can be identified</p>
Next steps	Website or via contact
Information	Web: www.energysavingtrust.org.uk/cafe Tel: 0844 848 0077 Email: cafe@est.org.uk

Case Study: CAfE Sustainable Youlgrave



Located in the middle of the Peak District National Park, near Bakewell, Sustainable Youlgrave began in 2006 when local people came together to examine how the area's carbon footprint could be reduced while also ensuring the long-term future of the wider community. The project seeks to take Youlgrave beyond carbon neutral so that via energy conservation, renewable and sustainable means, it becomes a net energy contributor. Grant funding enabled feasibility studies for a community anaerobic digestion facility with the aim of developing this to implementation. Sustainable Youlgrave is a signed up member of the CAfE programme and benefits from mailings as a source of information. Visit www.sustainableyoulgrave.org/.

Case Study: Coordinated Wood fuel Initiative (CWI)

While not a CAfE project, the Wood fuel Initiative delivered by the Centre for Sustainable Energy in the South West provides an excellent demonstration of the types of service from which a community renewable energy project could benefit. CWI ran from Autumn 2006 to Spring 2008 and aimed to boost the number of small- and community-scale biomass boilers installed in the region. It helped to deliver almost 1.3MWth of additional biomass heating capacity – a total of 24 installations – which it was estimated will increase the market for forest industry products by some 670 tonnes or 1,918m³ annually and deliver long-term, annual reductions in CO₂ emissions of an estimated 782 tonnes. CWI provided a telephone advice line, free site visits from experts, access to capital grants backed up by tailored reports and recommendations.

Carbon Trust A	
About	A BERR programme for businesses providing advice on reducing carbon emissions, carbon management and developing low carbon technologies.
Coverage	UK
Eligibility	All business
Support	A range of products and services, events, resources and publications is available from the website. Businesses with annual energy bills above £50k qualify for a free energy audit. The Trust also manages several investment and grant programmes
Next steps	Website or via contact
Information	Web: www.carbontrust.co.uk Tel: 0800 085 2005 Email: customercentre@carbontrust.co.uk

Energy Saving Trust Transport Advice Programme G I	
About	Programme of the Government's Energy Saving Trust providing free advice to businesses in England and Scotland on energy efficient and low carbon transport, including on biofuels
Coverage	UK
Eligibility	All business
Support	Businesses can sign-up for monthly fleet updates. A free telephone advice line is available to those with fleets less than 50 vehicles; larger fleets (over 50 in England, over 20 in Scotland) are eligible for a free 'green fleet review'. Online resources include publications and case studies
Next steps	Website or via contact
Information	Web: www.energysavingtrust.org.uk/business/Business/Transport-in-business Tel: 0845 602 1425 Email:

National Non Food Crops Centre A F I	
About	UK's national centre for plant-based renewable fuels, materials and technologies. It aims to accelerate the production and use of renewable fuels and materials and development of supply chains, and to provide an independent source of advice
Coverage	UK
Eligibility	No restrictions
Support	Advice and information on biogas, AD, woodchips and pellet, gasification

	<p>and pyrolysis free of charge via the website or helpline targeting three audiences:</p> <ul style="list-style-type: none"> • Growers and producers: information on crop types, growing and processing, and the economics of doing so • Industry and production: Information on the renewables industry including commercial and market issues, and the development of supply chains • Suppliers and end-users: recycling and composting, products <p>A funding database is also available together a range of tools such as those listed below:</p> <ul style="list-style-type: none"> • <i>Environmental Assessment Tool</i>: to assist the non-food crops and biomaterials industry with access to means and data to conduct a comparative environmental assessment of products in a format that verifies their claimed benefits • <i>AD Economic and Suitability Assessment Tool</i>: a downloadable cost calculator for estimating costs of AD facilities. The main report assesses the economics of new AD production technologies in the UK, and includes instructions for the using this tool • <i>Biodiesel and Straight Vegetable Oil (SVO) calculators</i>: tools for determining the outline economics of on-farm production when using oilseed rape as the feedstock. Separate calculators for SVO and biodiesel • <i>Set-aside Spreadsheet</i>: to aid assessment of the economic feasibility of energy and industrial crops in comparison with arable crops using case studies of two perennial crops (short rotation coppice and miscanthus) and two annual crops (wheat and hemp) <p>The NNFCC offers newsletters and mailings free of charge (see website to receive) however subscribing to the Network provides access to further resources and benefits. Subscribers receive news on growers and buyers, including bioenergy contracts.</p> <p>Feasibility and project research can be undertaken either free or charge or at cost to the recipient, depending on the specific project and need</p> <p>The NNFCC is able to facilitate funding for R,D&D in all eligible fuels and technologies. It can also link existing growers and buyers for supply.</p>
Next steps	Website or via contact
Information	<p>Web: www.nnfcc.co.uk Tel: 01904 435182 Email: enquiries@nnfcc.co.uk</p>

Partnerships for Renewables (PfR) A	
About	A project of Carbon Trust Enterprises as a partnership for public sector organisations wanting to develop onsite renewable energy potential, currently working with over 100 public sector bodies
Coverage	UK

Eligibility	Public sector
Support	<p>PfR works in partnership with public sector bodies to plan, develop, construct and operate renewable energy developments on public sector land. It funds all development activity associated with the project, from feasibility studies and Environmental Impact Assessments through to planning applications, permitting and construction.</p> <p>The development process consists of four stages, the costs of which are born by PfR: Initial screening – office based assessment of site Feasibility study – assessment of commercial, environmental and construction viability Project development – detailed site assessment Community consultation</p> <p>Partnerships are long-term and last throughout the lifetime of a project</p>
Next steps	Contact business development team to discuss opportunities at development@pfr.co.uk or on 01242 633 600
Information	Web: www.pfr.co.uk Tel: 020 7170 7000 Email: info@pfr.co.uk

6C SUPPORT FOR SUPPLY CHAIN & PRODUCERS

The supply chain connects the producer of a feedstock e.g. farmer, forester, with the end-user. It therefore includes the collection, handling, processing and storage of crops.

All Bioenergy

National Farmers Union (NFU) – West Midlands F I	
About	Union for farmers and growers, responsible for retailer monitoring and analysis, public procurement, the food service and manufacturing sectors and working with Assured Food Standards
Eligibility	Farmers and growers
Coverage	UK – Regional Office
Support	<p>News, policy updates and announcements of forthcoming events are available free from the website and to members, additional resources and publications (see <i>Information</i>). Free online resources include a guide to biodiesel on-farm production, and information on using biogas as a transport fuel.</p> <p>Within the Region, the NFU is able to provide or sign-post information for growers and potential growers, coordinate groups of growers, and set-up issues-led meetings where there is local interest. The Union does not get involved directly in the delivery of projects</p>
Next steps	Website or via contact
Information	Web: www.nfuonline.com/x153.xml

	Tel: 01952 400 500 Email: West.Midlands@nfuonline.com
--	--

West Midlands Rural Affairs Forum A F I	
About	A Forum of rural stakeholders from the Region working with Regional partners including the Regional Assembly, AWM, Central Government, Government Office for the West Midlands, Local Government, the Commission for Rural Communities, rural customers, delivery agencies, businesses and other regional and sub-regional bodies on the integration of the rural dimension in strategies and action plans. It supports, reviews and monitors progress in implementing the Rural Strategy 2004 and other key regional strategies to ensure that they address the needs of the end-customer
Coverage	West Midlands
Eligibility	No restrictions
Support	Representation covers seven broad sectors: countryside, environment and recreation; rural economy and employment; rural communities and services; central government bodies; Regional bodies; local government; and sub-regional partnerships. The Forum meets quarterly across the Region and holds an annual conference. Task and Finish Groups are established to support its activities. More recently Specialist Seminars have been developed to offer a method of extending its influence across the region The Rural Network provides information on Regional events, meetings, strategies and policies (see <i>Rural Network</i> in Information on Bioenergy)
Next steps	Website or via contact
Information	Web: www.ruralnetworkwm.org.uk/wmraf Tel: 0121 352 5362 Email: ruralenquiries@gowm.gsi.gov.uk

Warwickshire Wood Fuel B F I	
About	A wood-fuel initiative starting 2009 to establish a producer group to provide a market to get small woodlands back into management, and link end users with a local producers
Coverage	Warwickshire
Eligibility	To be confirmed
Support	The main objectives of the project are: <ul style="list-style-type: none"> • Establish a wood fuel producer group • Provide a market for waste wood to encourage woodlands to be brought back into sustainable management • Establish local depot (Stoneleigh) using local wood to supply fuel to public and private sector end users <p>Long term, it is planned to role out the project to a wider area</p>
Next steps	Further details will be published when confirmed
Information	Web: www.ruralhub.org.uk (Warwickshire Rural Hub) Tel: 02476 858254 Email: joannar@rase.org.uk

West Midlands' Rural Hubs A F I	
About	Rural hubs have been established across the Region as networks of rural businesses and rural-producers to provide a voice to and support the needs of the farming and rural business community. Their main role is to serve as information exchanges and to provide sign-posting
Coverage	West Midlands
Eligibility	Rural businesses
Support	<p>Benefits of hub membership include:</p> <ul style="list-style-type: none"> Facilitating the development of alternative and innovative, business opportunities Access to events and training on rural business performance and growth Representation of needs to organisations and agencies Information signposting e.g. to technical advisers, producer/suppliers Help accessing grant funding Opportunity to share and learn from businesses elsewhere <p>Local hubs may be able to facilitate and coordinate meetings around issues or business opportunities if strong interest is identified</p> <p>Membership of a hub is free of charge</p>
Next steps	Contact local forum for membership details
Information	<p>Staffordshire Rural Hub, Frances Beatty Tel: 01889 508784 Email: frances.beatty@googlemail.com</p> <p>Warwickshire Rural Hub, Carrie Robbins Tel: 02476 858242 Email: info@ruralhub.org.uk</p> <p>Herefordshire Rural Hub, Cathy Meredith Tel: 01432 870033 Email: meredithc@hct.ac.uk</p> <p>Worcestershire Rural Hub, Pauline Yardley Tel: 01905 622940 Email: pyardley@vcoll.ac.uk</p> <p>Shropshire Rural Hub, Victoria Jones Tel: 01939 262106 Email: shropsruralhub@wnsc.ac.uk</p>

Biomass

Forestry Commission (FC) – West Midlands B C D F I	
About	Government department responsible for and champion woodlands and forestry in the West Midlands
Coverage	UK – regional office in West Midlands
Eligibility	No restrictions
Support	Regional offices and wood-fuel officers can provide local information on wood-fuel including sustainable management, harvesting, processing and

	<p>other technical and practical activities. They provide a sign-posting service to relevant organisations within the Region and networking, such as advising on local suppliers and equipment hire. The FC also administers and advises on grants, issues licences for tree felling, and determines whether Environmental Impact Assessments may be required for those wishing to remove trees or plant new woodland.</p> <p>At a UK-level the Commission's 'Forest Research' team undertakes research and provides through the website, information on growing and using wood-fuel and short rotation coppice to growers, researchers and the bioenergy industry.</p> <p><i>Woodfuel Resource in Great Britain</i> is an interactive online tool providing information on the potentially available wood fuel resource, searchable by geographic region, resource type, and by class of wood fuel resource</p>
Next steps	Contact regional office to discuss requirements
Information	<p>Web: www.forestry.gov.uk/westmidlands Tel: 01889 586593 (general) Tel: 01905 532200 (woodland managers and owners) Email: sue.hutchings@forestry.gsi.gov.uk Email: westmidlands.fce@forestry.gsi.gov.uk</p>

Marches Wood Energy Network (MWEN) / Midlands Wood Fuel B C D F I	
About	<p>MWEN is a not-for-profit company promoting wood fuel in the West Midlands. It provides free advice on suitability, fuel supply and procurements, and project management and technical support. Tools available online include regulatory guidance. MWEN also has a wood fuel supply company, Midlands Wood Fuel Ltd (www.wood-fuel.co.uk/)</p> <p>Midlands Wood Fuel is an integrated wood heating company covering wood boiler installation and fuel supply in pellets and chips. It operates a wood chip supply infrastructure of seven local storage depots with processing facilities (chippers) located across Shropshire, Herefordshire, Worcestershire and Warwickshire, and can deliver direct to customers. The company contracts with producers and end users as part of this chain.</p> <p>The wood chipper is available for hire to enable producers and those with a wood supply to chip their own material for use. Minimum 3 weeks notice is required for 2 – 3 day loan periods and at a cost to the user.</p> <p>Leaflets on 'fuel supply' and 'contract chipping' leaflet are available online</p>
Information	<p>Web: www.mwen.org.uk Tel: 01952 510001 Email: info@mwen.org.uk</p> <p>Web: www.wood-fuel.co.uk Tel: 01952 510001 Email: info@wood-fuel.co.uk</p>

Shropshire and Staffordshire Renewable Energy Project B I	
About	A renewable energy project to promote and accelerate the use of biomass, and stimulate development of a biomass supply chain. It aims to increase the investment in production facilities for biomass fuel sources and improve the quality of fuel supply, pulling the renewables cluster together under a single brand
Coverage	Staffordshire and Shropshire
Eligibility	Business
Support	<p>The biomass capacity building programme seeks to increase capacity in biomass production and use by:</p> <ul style="list-style-type: none"> • Identifying a location for fuel production and storage close to source • Identifying organisations and individuals to supply raw materials • Testing fuel sources and mixes to ensure quality and uniformity • Assessing user demand in private and public sectors • Audits of private and public buildings for boiler installation feasibility • Assessing viability of boiler installations in planned new construction • Establishing basis of contracts between fuel suppliers and end users • Investigate delivery costs of wood chips to boilers <p>The project aims to roll out from the initial stage to develop further production and storage facilities, involving additional suppliers and users</p> <p>Information and advice on fuel supply and technology is available free of charge on the website and through networking with existing local businesses. The project can also provide training opportunities e.g. seminars, workshops and visits to installations</p> <p>See <i>Funding for Environmental Improvements</i> for details of grants</p>
Next steps	Contact project manager, Diane Roberts
Information	Web: www.staffsoc3.org.uk/default.aspx?PageId=108 Tel: 01785 276528 Email: diane.roberts@staffordshire.gov.uk

West Midlands Woodland and Forestry Forum F I	
About	The Forum provides a unified voice to champion trees, woodlands and forestry in the region and to further their inter-action with wider regional interests and agendas. Eleven priority issues provide the basis for task and finish groups including in woodland coverage, woodland and forestry industry, wood energy, recycling, skills, regeneration and development
Coverage	West Midlands
Eligibility	No restrictions
Support	<p>Task groups are active in eight areas: woodland opportunities mapping; biodiversity; wood energy; workforce development; green infrastructure planning; recycling; forestry and woodland industries; and social forestry</p> <p>Information on developments in these areas is available from the website and email, including updates on wood use for fuel and active projects</p>
Next steps	Website or via contact
Information	Web: www.growingourfuture.org/wmwff/index.htm Email: s.roberts@wmra.gov.uk

Other

Wood Chipper: Hire F I

Local authorities: a home wood chipping service is offered by some local authorities through the recycling team e.g. Rugby Borough Council at £10 - £15 per hour

Midlands Wood Fuel: use of their chipper for 2 – 3 day periods with 3 weeks notice

Forestry Commission: may contract out its own chippers and can advise on chipper hire facilities within local area

Refer also to the following entries in sections 5A and B for information of support they are able to offer in one or more of these areas:

- Bioenergy West Midlands
- BiogenGreenfinch
- Biomass Energy Centre
- Business Link West Midlands
- Low Carbon Communities for Business
- Heartwoods
- Marches Energy Agency (MEA)
- Share Energy
- RADAR
- Energy Saving Trust Community Action for Energy (CAfE)
- Energy Saving Trust Transport Advice Programme
- Waste and Resources Action Programme (WRAP) (see *Information*)

There are plans within the West Midlands region to provide further support to the bioenergy supply chain from 2009 – 2010.

6D CONSULTANCY SERVICES

Consultancy services are available at all levels, undertaking research, feasibility studies, providing financial and technical advice, and providing support in project development. Whilst a limited amount of advice may be available free of charge, there will generally be a cost incurred if requirements are to be met.

The majority of consultancies and individual consultants are specialists in their particular field of work e.g. rural enterprise, business support, or one or more types of bioenergy. This guide does not seek to provide an exhaustive list or recommend specific West Midlands consultants and this information can be readily obtained through the web or by contacting programmes such as Bioenergy West Midlands and Business Link. Examples provided below are those with a particular regional or national relevance and that are often connected with wider programmes.

Advantage Business Angels A F I	
About	Advice service including on finance and management for all businesses
Coverage	West Midlands
Eligibility	All business
Support	Advice, management and financial support to early stage businesses, individual entrepreneurs, young but growing companies, or re-starts of older businesses. Services include for: <ul style="list-style-type: none"> • Companies seeking funding • Investors looking for investments • Consultancy advice
Next steps	The website provides CVs, email and telephone number for team members. Businesses are advised to contact the member whose expertise are appropriate to meet particular need
Information	Web: www.advantagebusinessangels.com/ Tel / Email: see website

Case Study: Advantage Business Angels

There are several case studies available on the website to demonstrate the types of support this service is able to provide. As one example, Business Angels helped one business to find £630k of equity finance from a group of private investors plus two highly experienced non-executives with industry experience to complement the period of exclusivity offered by vendors. This enabled the business, formerly with a turnover of under £50k, to acquire a business in the same sector with turnover of over £1m and which had an excellent strategic fit. The fund raising and take-over was completed in four months and one day.

BiogenGreenfinch E H I	
About	BiogenGreenfinch is a process engineering company in AD technology and projects, specialising in sewage sludge, farm, and food waste digesters
Coverage	UK
Eligibility	No restrictions
Support	Information and advice on biogas and AD is available on the website and email enquiries are encouraged. Enquiries are filtered and those with recognised potential for further development receive a site inspection. Feasibility studies, research, planning guidance, training and practical support including project management, technology sourcing and project support are available at a cost
Next steps	Website or via contact
Information	Web: www.greenfinch.co.uk Tel: 01584 877687 Email: biogas@greenfinch.co.uk

Carbon Trust Incubator Scheme A	
About	The Scheme aims to help prepare early stage companies of innovative carbon-saving technologies and with commercial and technological potential, to raise the investment needed for growth

Coverage	UK
Eligibility	Start-up or spin-out (from academia or a large company) are eligible to apply and from any country, however all investments must be UK-based
Support	The Scheme provides tailored strategic and business development consultancy, advice on corporate finance, management team recruitment and mentoring, market research and engagement and guidance on intellectual property protection. Incubator partners receive up to £60k funding for services to a company; there are also two 'professional service partners' who will provide unpaid legal and business/financial advice up to an agreed number of hours (typically 4-8)
Next steps	Website or via contact. The Carbon Trust holds an annual, four-day 'Investment Readiness Workshop' to give early-stage and start-up companies an insight into what is required to commercialise an early stage low-carbon technology. Dates of forthcoming workshops will be published on the website.
Information	Web: www.carbontrust.co.uk/technology/incubator/workshops.htm Tel: 0207 170 7000 Email: rachael.nutter@carbontrust.co.uk

Case Study: TMO Biotec Ltd.

TMO Biotec Ltd has developed a thermophilic microbiological technology for a range of applications, including biofuels. The company is developing both its technology and its routes to markets and is aiming to secure further funding to grow the business. Licensing their technology is likely to be a key component of TMO Biotec's commercialisation strategy and incubator support has initially been focussed on this area. Further information on the company is available from www.tmo-group.com.

Centre for Alternative Technology (CAT) A F I	
About	The Centre promotes renewable energy through its visitor centre, information, training courses and education, and publications, covering all aspects of the bioenergy chain.
Coverage	UK
Eligibility	No restrictions
Support	The CAT information department provides free advice and information on all aspects of bioenergy via the website, fact sheets, and an online enquiry form. Consultancy services are available at a cost including specific advice, Site assessments, renewable energy resource surveys, energy audits, feasibility studies, technical guidance, environmental business planning, sourcing environmental products, policy formulation, and technical training and corporate environmental training. A range of educational services and tools are offered from guided day visits to short courses in renewable technologies and a year long MSc .
Next steps	Website or via contact
Information	Web: www.cat.org.uk

	<p>Tel: (0)1654 702782 (general) Tel: 0)1654 705991 (consultancy) Email: online enquiry forms for each service</p>
--	--

Energy4All A	
About	Energy4All is a programme of support and share opportunities for those interested in community renewable energy projects, owned by the projects it assists. It was created through the success of the Baywind Cooperative
Coverage	UK
Eligibility	No restrictions
Support	<p>Services include:</p> <ul style="list-style-type: none"> • Consultation with community groups, local authorities and energy agencies to develop community ownership initiatives • Innovative financial models to raise equity capital through share issues, supported by bank facilities where appropriate • Brokering renewable energy services on behalf of community organisations and arranging project finance • Site monitoring and management services once a project is established • Consultancy services on community ownership and sustainable energy projects for wind, hydro and biomass projects. <p>Energy4All plans to expand from wind into other sustainable electricity technologies such as biomass and will consider a variety of structures from full community ownership of a project to an equity share in a project or a consultancy agreement.</p> <p>Consultancy services may incur a cost, depending on what is required</p> <p>The Westmill cooperative was the UK's first community-owned wind farm and a good case study example: www.westmill.coop</p>
Next steps	Contact Energy4All to discuss proposals
Information	<p>Web: www.energy4all.co.uk Tel: 01229 821028 Email: info@energy4all.co.uk,</p>

National Industrial Symbiosis Programme (NISP) A F I	
About	A UK membership programme that aims to improve cross-sectoral resource efficiency for competitive advantage. It brings together separate industries, businesses and other organisations in the physical exchange of materials, energy, water and/or by-products
Coverage	UK
Eligibility	No restrictions
Support	Membership provides access to business opportunities, workshops and events, and support from NISP practitioners. A database of case study projects is available online
Next steps	Online membership form
Information	<p>Web: www.nisp.org.uk Tel: 0845 094 9515 Email: info@nisp.org.uk</p>

BiogenGreenfinch Anaerobic Digestion Facility

Greenfinch is working in partnership with South Shropshire District Council to enable residents to recycle their biodegradable kitchen waste through anaerobic digestion. Funding for construction of the plant was secured from Defra's 'New Technology Demonstration Programme' and Advantage West Midlands. Separate bins supplied to households enable the redirection of 5,000 tonnes of kitchen waste from landfill every year, together with commercial source separated waste collected from businesses in Ludlow, to produce biogas used by local businesses to provide heat and electricity. The pasteurised bio-fertilizer by-product is offered to local farmers as a soil improver. The project demonstrates use of technology to treat and derive value from biodegradable waste materials.



Environmental / Agricultural Consultants **A F I**

There are many consultants in the West Midlands and UK with expertise in the environment, agriculture, sustainable energy and climate change and providing services for a fee. A list of consultants is available from the Bioenergy West Midlands website (www.bioenergywm.co.uk). Enquirers are advised to prepare a brief of their requirements prior to making contact

6E POLICIES

The UK government provides the source for national, regional and local policies and legislations, often influenced by the European agenda. In areas such as planning national guidance is available to local officers who develop their own policies and strategies according to strategies and plans, and often in consultation with local and regional stakeholders. As climate change and sustainable development are both cross-cutting in nature, there are a large number of policy areas relevant to bioenergy and rural issues. Policies and strategies are the fundamental influence on the availability of financial and other support for projects.

West Midlands Energy Strategy 2004	Increasing the use of renewable resources is one of the four headline objectives. Includes regional targets for renewable generation at 10% of electricity consumption by 2020, heat from renewable sources to provide 250GWh (0.3% of consumption) by 2010 and 650GWh (1% of consumption) by 2050, and for the production of liquid biofuels to reach 460GWh per year by 2010
West Midlands Economic Strategy 2007	First UK region to have a low carbon economic strategy. Aims to encourage low carbon business and the capitalising of sustainable and low carbon opportunities
West Midlands Climate Change Action Plan 2007	Works toward a low carbon economy and implementation of carbon reduction measures by removing policy and other barriers, and through leadership
Planning Policy Statement 1: Sustainable Development	Requires that development plan policies seek to promote and encourage, rather than restrict, the use of renewable resources, and that regional and local authorities promote community heating schemes, CHP, small scale renewable and low carbon schemes in

	developments
Planning Policy Statement 22: renewable Energy	Requires regional and local planners to take into account in their planning documents certain principles when planning for renewable energy including by ensuring policies promote rather than restriction new capacity, and that it is not ruled out or constrained by planning permissions
UK CHP Strategy 2004	Sets out support measures to support the growth of CHP capacity to achieve 2010 target and adopts a 15% target for electricity from this source by Government departments
UK Biomass Task Force Report 2005	Recommendations to Government on action in biomass technologies and supply chain
UK Climate Change Programme 2006	Lists measures Government has put in place to help deliver the UK's greenhouse gas targets until 2010 including a target that 10% of electricity sales will be generated from renewable sources, and to at least double the capacity of combined heat and power
UK Energy White Paper 2007	Government's International and National strategy on energy
UK Biomass Strategy 2007	Support measures to facilitate expansion in supply and use of biomass including through planning and legislation
UK Woodfuel Strategy 2007	Developed by Forestry Commission in response to Biomass Task Force Report. Interventions in investment, facilitation and awareness
UK Energy Act 2008	Implements legislative requirements of 2007 Energy White Paper. Strengthens Renewables Obligation and gives Government powers to introduce feed-in tariffs and a Renewable Heat Incentive
UK Planning and Energy Act 2008	Provides local authorities the powers to include in their development plans that a proportion of energy used be from renewable sources
UK Climate Change Act 2008	Made legally binding the target of reducing UK greenhouse gas emissions 80% from 1990 levels by 2050, an increase from the former 60%, and of at least 26% by 2020. Further measures to reduce emissions include powers to introduce domestic emissions trading schemes, and measures on biofuels
Common Agricultural Policy	The Creation of a Policy (the CAP) was proposed by the European Commission in 1960 and has since passed through several reforms, including the splitting into Pillar1 and 2 and introduction of the Single Payment Scheme (SPS)

7 Bioenergy Information

Anaerobic Digestion	
About	An independent website providing information, news and resources on Anaerobic Digestion (AD), and related subjects. It is primarily focused on AD for domestic, commercial and industrial waste processing
Information	Web: www.anaerobic-digestion.com/

Association for Organics Recycling	
About	An association promoting the sustainable management of biodegradable resources for the enhancement of the environment, business and society, including composting and other biological treatment techniques. The website includes publications, news on funding and forthcoming events. Various levels of membership are available from £50 +VAT
Information	Web: www.organics-recycling.org.uk

Biodiesel Filling Stations	
About	An online directory of biodiesel outlets in the UK
Information	Web: www.biodieselfillingstations.co.uk/

Bioenergy Feedstock Information Network	
About	A gateway to information about fast growing trees, grasses, and residues for biomass fuels and power. A US Government site, with a lot of international links
Information	Web: http://bioenergy.ornl.gov/main.aspx

TheBioenergySite.com	
About	Website devoted to the global bioenergy industry from a farming/agricultural perspective as an industry hub. Resources include news, technical articles, discussion forums, a directory of consultants and of bioenergy businesses
Information	Web: www.thebioenergysite.com

Biomass Energy Centre	
About	An information portal on biomass fuels and associated conversion technologies. It provides basic information and advice on fuel processing and supply chains, currently with an emphasis on wood fuel and heat production. Guidance on grants, legislation, events and publications is available from the website. The website hosts the <i>Biomass Environmental Assessment Tool (BEAT₂)</i> tool for assessing the impact of biomass energy projects. It is provided by Defra, the Biomass Energy Centre and the Environment Agency
Information	Web: www.biomassenergycentre.org.uk

Carbon Neutral Energy	
About	Online portal for suppliers of wood burners, wood boilers, logs for commercial and domestic premises, and for biodiesel. Website is in early stages of development
Information	Web: www.carbonneutralenergy.co.uk

Carbon Trust Biomass Heat Acceleration Project	
About	The Biomass Accelerator was launched in 2006 in response to the Biomass Sector Review as a 5 year programme. It aims to identify and address the key barriers to development of the biomass market in order that it can be more self-sustaining and to inform future Government policy
Information	Web:

	www.carbontrust.co.uk/technology/technologyaccelerator/biomass.htm
--	--

Centre for Alternative Technology (CAT)	
About	A free, online information service includes factsheets on biomass in households, bioethanol, and alternative transport fuels. The Centre also runs short courses and provides consultancy services.
Information	www.cat.org.uk

Combined Heat and Power Association (CHPA)	
About	An association promoting the wider use of combined heat and power and community heating. The website provides publications, news and events and information on membership
Information	www.chpa.co.uk

Community Composting Network	
About	A membership network supporting and promoting the community management and use of waste bio-degradable resources at all scales, from individuals to local authorities and social enterprises
Information	www.communitycompost.org

Country Land & Business Association (CLA)	
About	<p>A membership organisation for land, property and businesses owners in rural England and Wales. It is involved in policy development and provides free to members through the website and in-person, independent information and advice, access to training programmes, guidance notes, financial and planning support, news and events. Membership is available from £357 a year.</p> <p>The website hosts the <i>CALM</i> tool (Carbon Accounting for Land Managers) – a free web-based calculator that enables land managers to determine the balance between annual greenhouse gases emitted by their farming business and carbon sequestration, informing decisions on climate change mitigation (www.calm.cla.org.uk)</p>
Information	Web: www.cla.org.uk

Department for Business, Enterprise and Regulatory Reform (BERR)	
About	Government department responsible for business, regulation and policy development, and prior to the establishment of DECC, for energy policy. Energy publications and statistics are available online under <i>Energy</i> . Previously known as the Department of Trade and Industry (DTI)
Information	Web: www.berr.gov.uk

Department of Energy and Climate Change (DECC)	
About	A new Government department created in 2008 to bring together much of the Climate Change Group (previously part of Defra), with the Energy Group from BERR
Information	Web: www.decc.gov.uk

Department for Environment, Food and Rural Affairs (Defra)	
About	Government department responsible for sustainable development and

	the development and delivery of economic, social and environmental policy and strategy. It is the main department likely to affect biomass fuel production through the regulation and support of farmers and forest owners. Previously responsible for climate change, publications can be accessed from the website – together with the magazine 'Farming Link'
Information	Web: www.defra.gov.uk

EnAgri	
About	An online information source for bioenergy and energy agriculture at all stages of the bioenergy chain. On-line resources include independent information on renewable energy use and generation in farming and rural businesses. Annual subscription (from £35.25) provides access to further information and resources, a weekly newsletter and state of the market report
Information	Web: www.enagri.info

Energy Saving Trust (EST)	
About	A Government programme for households. Guidance on biomass, cost and suitability are available online with a link to the Low Carbon Buildings programme and databases of certified installers and products. It also includes a section on planning requirements for renewable technologies, and a carbon footprint tool. Provides advice through the ESTAC
Information	Web: www.energysavingtrust.org.uk

Environment Agency	
About	A public body charged with protecting and improving the environment in England and Wales and involved in policy development, as a regulator, and adviser. Information and resources on energy crops, biomass, biodiesel, bioethanol and anaerobic digestion is available online
Information	Web: www.environment-agency.gov.uk

European Biomass Association	
About	An association of national biomass associations with the aim of promoting biomass production and application throughout Europe. Includes articles and details of projects and publications
Information	Web: www.aebiom.org/

European Renewable Energy Centres (EUREC) Agency	
About	An independent association grouping about 40 prominent RD&D groups from all over Europe in the field of renewable energy technologies
Information	Web: www.eurec.be/

Farming Futures	
About	Managed by Forum for the Future, Farming Futures is a partnership providing advice to farmers on preparing for the impacts, opportunities, risks and responsibilities of climate change. Web-based resources include case studies and fact sheets, a regional impacts map, and news of free renewable energy events for farmers, advisers and land managers
Information	Web: www.farmingfutures.org.uk

Farming and Wildlife Advisory Group (FWAG)	
About	An advisory and support group assisting farmers through agri-environmental change and adaptation to environmental legislation. Annual membership for farmers, trade and corporate partners is available from £42 providing access to guidance, telephone advice, events, Continuing Professional Development (CPD), local groups and the opportunity to influence policy development
Information	Web: www.fwag.org.uk

Forestry Commission (FC)	
About	Government department responsible for protecting, expanding and promoting the sustainable management of forests and woodlands, and increasing their societal and environmental value. The Strategy for England's Trees, Woods and Forests sets out the Government's priorities and programmes for forestry in England. Around 75% of England's woodlands are privately owned and 25% are public forests managed by FC through its Agency Forest Enterprise. National and regional websites include information and advice on grants and regulations
Information	Web: www.forestry.gov.uk

Green Book Live	
About	A free online database designed to help UK specifiers and end users identify products and services that can help to reduce their impact on the environment. It includes a range of products and services, from commercial building products and services to domestic energy efficiency products including on BREEAM, Microgeneration and ISO14001
Information	Web: www.greenbooklive.com/

Green Grants Machine	
About	A database of grants, loans and awards available to help companies be environmentally friendly
Information	Web: www.greengrantsmachine.co.uk

Government Funding Database	
About	Online portal for grants available to the voluntary and community sector from UK government funding sources
Information	Web: www.governmentfunding.org.uk

GRANTfinder	
About	User-friendly funding database carrying details in excess of 4,000 UK and EU grants, loans, venture capital and advisory programmes
Information	Web: www.grantfinder.co.uk

Growing our Future	
About	Web portal for the West Midlands Woodland & Forestry Forum and West Midlands Forestry Framework
Information	Web: www.growingourfuture.org/

IEA Bioenergy	
About	IEA Bioenergy was set by the International Energy Agency (IEA), and aims to accelerate the use of environmentally sound and cost competitive bioenergy on a sustainable basis, and thereby achieve a substantial contribution to future energy demands
Information	Web: www.ieabioenergy.com/

Linking Environment And Farming (LEAF)	
About	Charitable organisation promoting sustainable agricultural practice for environmental and social benefit, including adoption of Integrated Farm Management (IFM) and LEAF farming principles. The <i>LEAF Audit</i> tool is available free online to members or to non-members in demonstration mode. Membership of myLEAF is free of charge
Information	Web: www.leafuk.org

Log Pile	
About	A project of the National Energy Foundation (NEF), the <i>Log Pile</i> website provides a database of wood fuel suppliers, news and events, and information on types of wood fuel and their use. It promotes the use of wood as a source of renewable energy and sustainable heating
Information	Web: www.nef.org.uk/logpile/index

Low Carbon Vehicles Partnership (LCVP)	
About	A partnership of organisations from the automotive and fuel industries, environmental sector, government, academia, road user groups and others with a stake in the low carbon vehicles and fuels agenda. As an action and advisory group, it aims to accelerate the shift to low carbon vehicles and fuels in the UK and to secure benefits for UK business
Information	Web: www.lowcvc.org.uk/

Micropower Council	
About	A body representing the microgeneration sector, launched in 2004. It includes all the large trade associations and a number of leading companies with interests in microgeneration, and acts as the industry's main contact point for government, opinion formers, the press, and the public.
Information	Web: www.micropower.co.uk

National Energy Foundation (NEF)	
About	An independent educational charity working to help people and businesses reduce carbon emissions by implementing energy efficiency measures and renewable energy sources. The website provides information on technologies and interactive calculators. Consultancy advice is available at cost as are short courses e.g. in wood fuel heating
Information	Web: www.nef.org.uk

National Non-Food Crops Centre (NNFCC)	
About	The UK's Centre for plant-based renewable materials and technologies providing services to Government, industry and the public including: independent advice and information, consultancy, research and policy

	development, conferences, exhibitions and seminars, and technical transfer. Toolkits, including a funding database and <i>Environmental Assessment Tool</i> for biomaterials are available from the website. Network subscription and benefits is available at three levels from an annual cost of £54 + VAT. The NNFCC aims to support producers, manufacturers and consumers, and the development and strengthening of supply chains
Information	Web: www.nnfcc.co.uk

National Farmers Union (NFU)	
About	A Union for farmers and growers responsible for retailer monitoring and analysis, public procurement, the food service and manufacturing sectors and working with Assured Food Standards. News, policy updates and events are available free from the website. Membership (from £41.50) provides access to legal, financial and businesses services The <i>Legal Assistance Scheme (LAS)</i> (subscription £29 + VAT) offers funding toward professional costs arising from disputes affecting subscribers' businesses
Information	Web: www.nfuonline.com

Natural England	
About	A public body that aims to conserve, enhance and manage the natural environment. It is involved in research, policy development and planning, and manages grants and funding programmes. Publications, including on farming and climate change, are available on the website
Information	Web: www.naturalengland.org.uk/

Renewable Energy Association (REA)	
About	The REA represents British renewable energy producers and promotes sustainable energy use in the UK. It provides services to businesses, local authorities and individual sectors including a 'primary biomass group' and 'bioenergy forum', policy development, organises conferences, seminars and workshops, publications, newsletters, training courses, and offers technical, legal, commercial and environmental advice. It also sponsors the Renewable Energy Assurance Scheme, which sets standards for the provision of renewable and other on-site energy production to non-industrial customers. Membership is available from an annual cost of £100
Information	Web: www.r-e-a.net/

RE:STATS	
About	RESTATS is the Renewable Energy STATisticS database and is the results of an ongoing study undertaken by AEA Energy & Environment on behalf of BERR. It consists of a database containing information on all relevant renewable energy sources in the UK and can be searched using an interactive map
Information	Web: www.restats.org.uk/

Royal Agricultural Society of England	
About	A charity and membership organisation working towards a sustainable, vibrant future for British agriculture and the rural economy. The encouragement of education on rural issues and the social welfare of rural communities are also key areas of activity. Membership provides access

	to resources and ticket offers for events
Information	Web: www.rase.org.uk Tel: 024 7669 6969 Email: info@rase.org.uk

Royal Commission on Environmental Pollution (RCEP)	
About	An independent standing body established in 1970 to advise the Government and the public on environmental issues. The site includes details of all RCEP reports, with the more recent ones full text
Information	Web: www.rcep.org.uk/

Sustainable Development Commission	
About	Independent adviser to Government on sustainable development policies including climate change, energy, transport, natural resources and land use
Information	Web: www.sd-commission.org.uk

The Renewable Energy Centre	
About	An information portal providing advice, a funding directory, and links to organisations providing products and services in each technology field – including in biomass and biofuels
Information	Web: www.therenewableenergycentre.co.uk

Waste and Resources Action Programme (WRAP)	
About	Promotes sustainable waste management to individuals, businesses and local authorities, including of food waste. The website includes events, training, toolkits, funding and calls for tenders including in bioenergy. A sub-heading on 'Biowaste' provides published resources on food waste opportunities and benefits, including on cost benefit analysis
Information	Web: www.wrap.org.uk

West Midlands Rural Network (WMRN)	
About	<p>The Network website provides a source of information about rural affairs in the West Midlands including details of forthcoming events and meetings, information on strategies and policies, news on key rural themes and links to other relevant websites.</p> <p>In addition, this website has dedicated areas for the West Midlands Rural Affairs Forum and the West Midlands Rural Accord. These give information about the two groups, including their purpose, methods of working, details of meetings and some meeting papers.</p> <p>The WMRN operates a mailing list providing automatic updates on relevant issues and forthcoming events. Details on joining can be found on the contact page</p>
Information	Web: www.ruralnetworkwm.org.uk

West Midlands Finance Portal	
About	A comprehensive source of information about all types of business

	finance in the West Midlands
Information	Web: www.westmidlandsfinance.com

8 Index of Abbreviations

AD	Anaerobic Digestion
ALSF	Aggregates Levy Sustainability Fund
AONB	Area of Outstanding Natural Beauty
AWM	Advantage West Midlands
BERR	Department for Business, Enterprise and Regulatory Reform
BRE	Building Research Establishment
CAP	Common Agricultural Policy
CHP	Combined Heat and Power
DECC	Department for Environment and Climate Change
Defra	Department for Environment, Farming and Rural Affairs
DfT	Department for Transport (now BERR)
Dti	Department for Technology and Industry
ERDF	European Regional Development Fund
EU	European Union
FC	Forestry Commission
IT	Information Technology
kW	Kilowatt
KWth	Kilowatt therm
MEA	Marches Energy Agency
RDPE	Rural Development Programme for England
RLR	Rural Land Register
RO	Renewables Obligation
ROC	Renewables Obligation Certificate
RRZ	Rural Regeneration Zone
RTFO	Renewable Transport Fuels Obligation
SDF	Sustainable Development Fund
SME	Small and Medium Enterprises