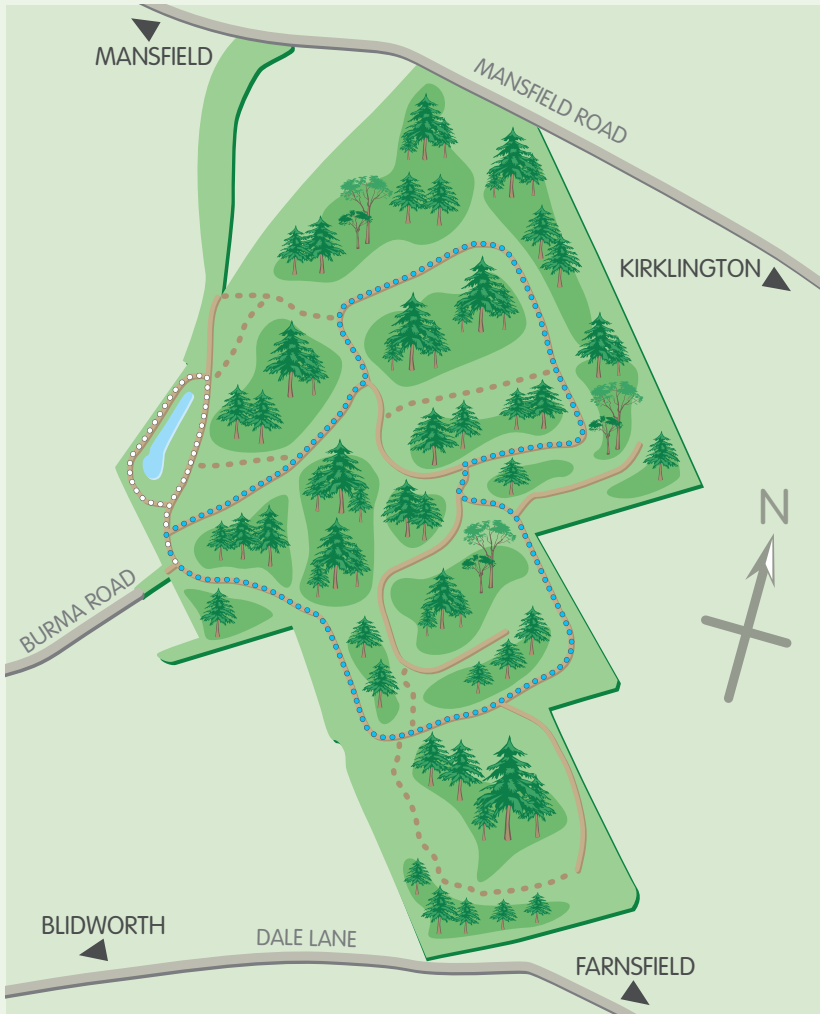


Explore Boundary Wood



Boundary Wood is a hidden gem. A mosaic of woodland, wetland and grassland there is plenty to see. Keep an eye out for hunting kestrels and buzzards and listen for the song of the skylark as you meander around a network of tracks and trails.

Take in the wide variety of habitats and wildlife as you explore the site on foot or bicycle. With flora and fauna flourishing there's plenty to see.

A network of surfaced paths meander through the woodland offering easy going routes and a chance to explore the diversity of the site.

Directions: From the A617, take the B6020 toward Blidworth. Just as you enter the village, turn left onto Burma Road. NG21 0RT. SK598569.



Key

- Parking
- Viewpoint

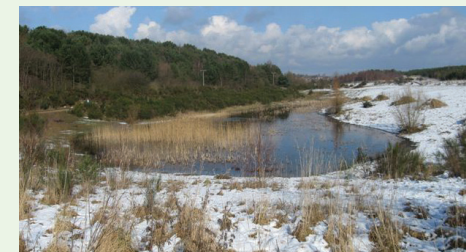
Trails

- White Trail 1km (easy)
- Blue Trail 3km (moderate)

Top: Orchid bank

Right: Pond

Far Right: Small tortoiseshell



Local Forestry Commission Office:
Sherwood, Edwinstowe, Mansfield. NG21 9JL
T 01623 822447 enquiries.sherwood@forestry.gov.uk

www.forestry.gov.uk

Designed by Catch Designs, March 2010.

Follow the Forest Code

- Guard against all risks of fire.
- Protect and respect wildlife, plants and trees.
- Keep dogs under control.
- Take your litter home.
- Make no unnecessary noise.
- Take only memories away.



Forestry Commission woodlands have been certified in accordance with the rules of the Forest Stewardship Council.
SGS-FMC/COC-000358
© 2009 Forest Stewardship Council A.C.

This project is in partnership with

