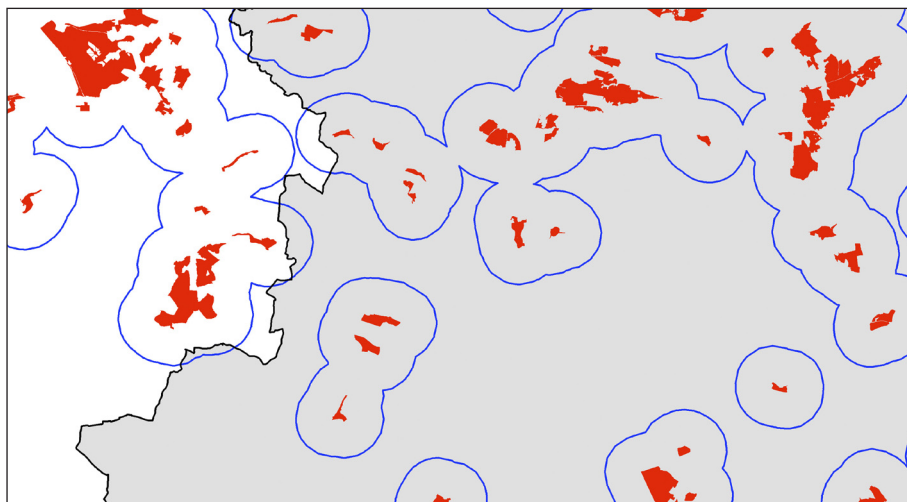
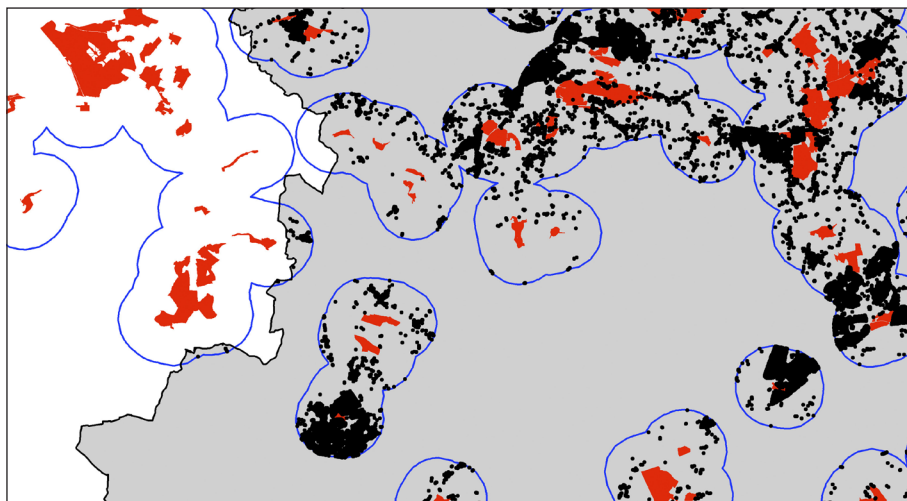


Maps extracted from 'An analysis of accessible natural greenspace provision in the South East' report.
Patrick McKernan, Forestry Commission, and Matthew Grose, High Weald AONB Unit, 2007.







Map 5. Example of aggregated accessible natural greenspace sites of at least 20 hectares with 2 kilometre buffers.



Map 6. Example of accessible natural greenspace sites of at least 20 hectares with AddressPoint data clipped to the 2 kilometre buffers. The population is only measured within the South East.



Legend for both maps

-  Accessible natural greenspace sites of at least 20ha
-  2km buffers
-  Households in the South East within the 2km buffers
-  South East region

Maps derived from Ordnance Survey digital data.
© Crown Copyright. All rights reserved. Natural
England licence no. 100046223 (2007)