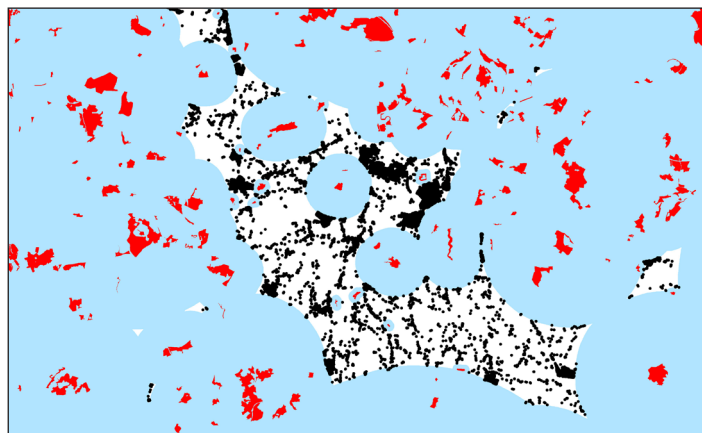
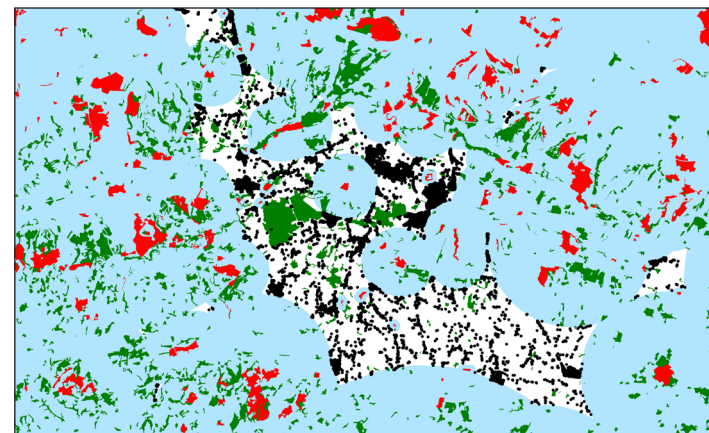


Maps extracted from 'An analysis of accessible natural greenspace provision in the South East' report.
 Patrick McKernan, Forestry Commission, and Matthew Grose, High Weald AONB Unit, 2007.



Map 25. Example of households with none of their ANGSt requirements met.

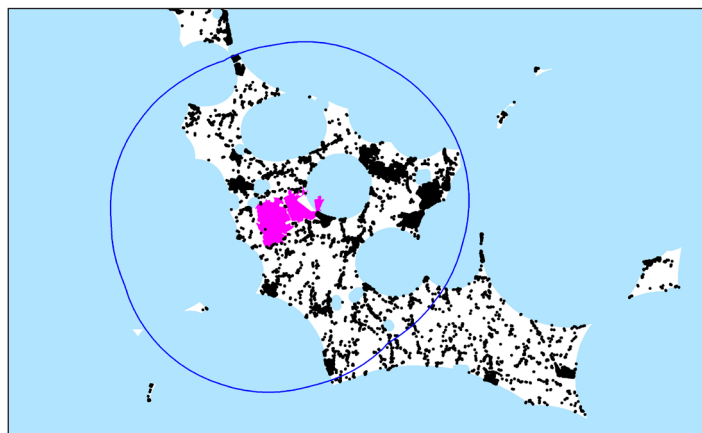


Map 26. Woodlands outside accessible natural greenspace near households with none of their ANGSt requirements met.

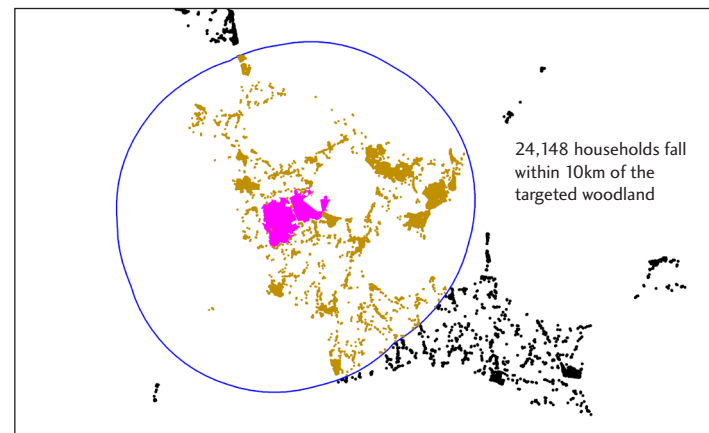


Legend for all maps

- Households with none of their ANGSt requirements met
- Households within 10km of a new accessible natural greenspace site >500ha
- Area where households are already served by one or more ANGSt requirements
- Accessible natural greenspace
- Woodland outside of accessible natural greenspace*
- Example of a woodland >500ha targeted to provide additional accessible natural greenspace
- 10km buffer around targeted woodland



Map 27. A woodland greater than 500 hectares targeted to provide additional accessible natural greenspace, with 10 kilometre buffer.



Map 28. Households falling within the 10 kilometre buffer of the targeted woodland.

* Derived from the Forestry Commission's National Inventory of Woodland and Trees (Smith, 2000)