



**Comisiwn Coedwigaeth  
Forestry Commission**

**SCHOOLS EDUCATION SERVICE  
SURVEY  
2005/2006**

**AUTHOR**

Marc Wilson

Economics & Statistics  
Corporate and Forestry Support  
Forestry Commission  
231 Corstorphine Road  
Edinburgh  
EH12 7AT

Tel: 0131 314 6218

Fax: 0131 316 4344

Email: [statistics@forestry.gsi.gov.uk](mailto:statistics@forestry.gsi.gov.uk)

**FORESTRY COMMISSION WALES**

Sue Ginley

Social Forestry Team  
Nant Yr Arian  
Ponterwyd  
Nr Aberystwyth  
Ceredigion  
SY23 3AD

Tel: 01970 881924

Fax: 01970 890340

Email: [sue.ginley@forestry.gsi.gov.uk](mailto:sue.ginley@forestry.gsi.gov.uk)

## **CONTENTS**

<b>SUMMARY</b>	<b>2</b>
<b>SCHOOLS EDUCATION SERVICE SURVEY 2005/2006</b>	<b>3</b>
Group composition	3
Sites visited	4
Month of visit	5
Finding out about Schools Education Service for the first time	5
Prior information	6
Rating the Schools Education Service	6
Future contact	8
Improvements	8
<b>APPENDIX 1: Questionnaire</b>	<b>9</b>
<b>APPENDIX 2: Results Tables</b>	<b>11</b>

## **SUMMARY**

This report provides results from Forestry Commission Wales (previously called Forest Enterprise Wales) Schools Education Service survey that took place in Wales during the financial year 1<sup>st</sup> April 2005 to 31<sup>st</sup> March 2006. Percentages shown are based on those who expressed an opinion.

A total of 103 school groups participated in the survey and 2,887 children either made visits to forests as part of a Schools Education Service trip or were visited by the Schools Education Service at their school (29%).

Over two thirds of schools had used the Schools Education Service before (68%) and all schools indicated that they intended to use them again.

The most visited site was Garwnant (13%), closely followed by Coed y Brenin (10%) and Moel Famau (8%).

Almost a third of groups contained between 21 and 30 children (32%) and almost another third contained more than 30 children (31%). 6% of groups did not state how many children belonged to their group. Of the groups that stated how many children belonged to their group, the average number of children per group was 29.8.

Visits generally took place in the second half of the school year with few visits during January, July, August, September and October. During February, March and April 14 groups visited each month.

A large number of schools first heard of the Schools Education Service through information sent to their school (41%). Over a fifth had heard through friends or colleagues (22%).

Almost all schools indicated that they had received adequate information prior to their visit (98%).

Over three quarters of groups rated the overall educational benefit of activities as very high (77%) and almost one fifth rated it as high (18%). There were very few low and very low ratings, 3% and 2% respectively.

93% and 92% of groups indicated that they intend to make use of web support material and paper support material respectively. Note that only 57 groups responded to the web support material question and 78 groups responded to the paper support material question.

Over two thirds of schools would like to undertake self-led visits (71%). Of the 39 groups that provided one suggestion on how the service could be improved, 24 expressed how excellent their day was. Other suggestions were to be given an introduction before they visited, to improve forest activities, to have bins on trails, better wheelchair access and to have a contrast between summer and winter visits.

## SCHOOLS EDUCATION SERVICE SURVEY 2005/2006

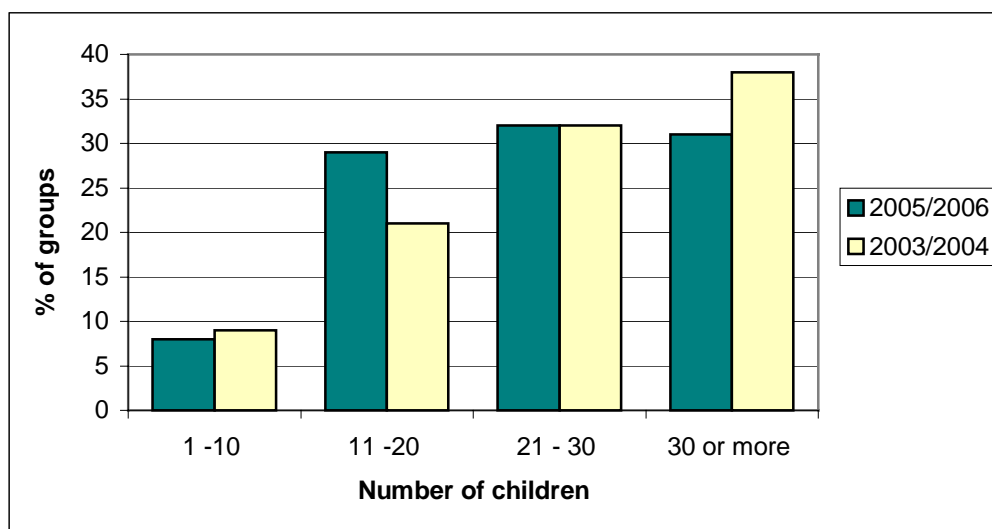
A Survey of the Forestry Commission's Schools Education Service was carried out in Wales during 2005/2006. A total of 103 questionnaires were completed by school groups who either visited or were visited by the Schools Education Service.

### Group composition

A total of 2,887 children belonged to 97 of the groups surveyed. The remaining six groups did not state how many children belonged to their group.

Of the groups that did state how many children belonged to their group, almost a third contained between 21 and 30 children (32%). A similar number of groups contained more than 30 children (31%) and 29% of groups contained between 11 and 20 children. A further 8% of groups contained between one and ten children. (Figure 1).

**Figure 1: Size of groups using Schools Education Service**



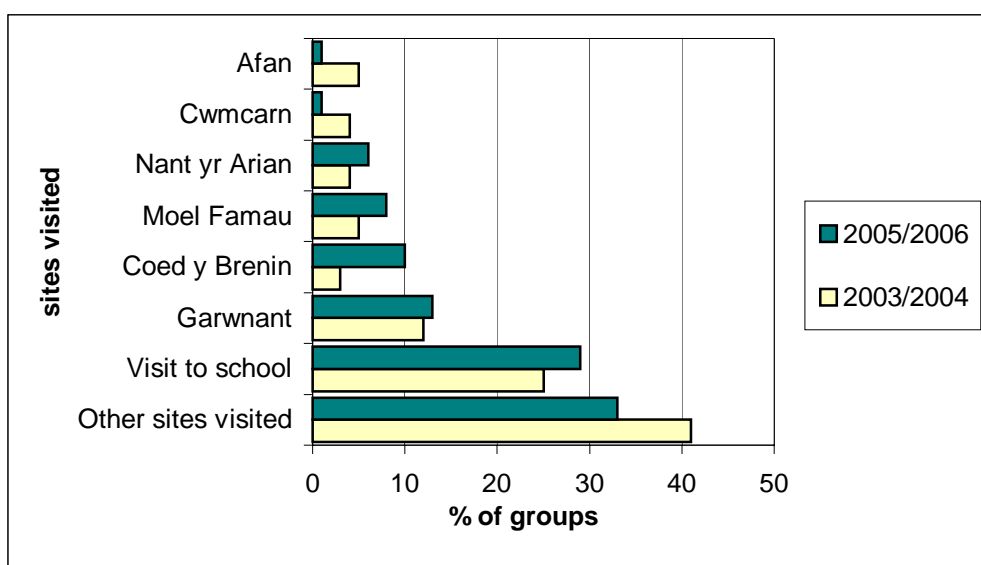
On average there were 29.8 children per group across groups that provided such information, compared with 37.8 children per group in the 2003/2004 survey.

The majority of groups contained children aged between three and eleven years old (93% of groups) and the remaining 7% of groups contained children aged 12 and over.

### Sites visited

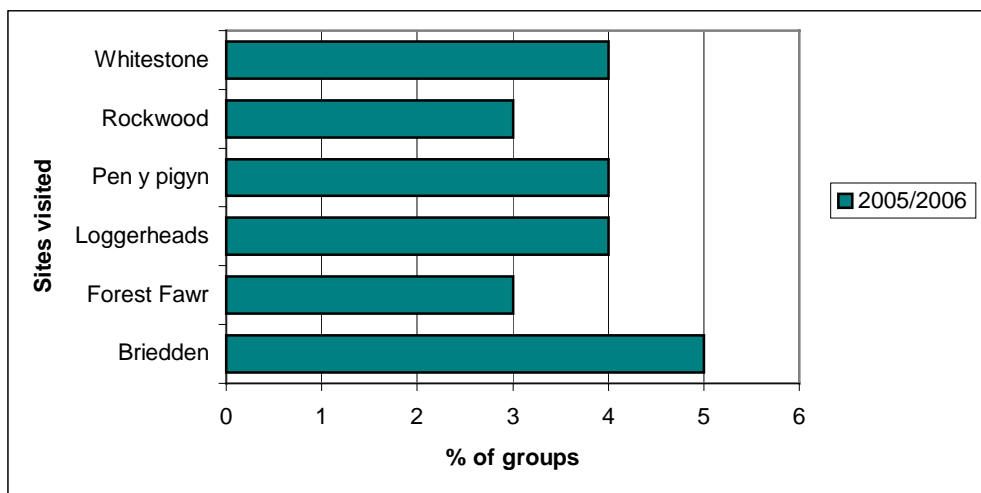
The Schools Education Service visited around one third of groups at their school (29%). The most visited site was Garwnant (13%) with a further 10% of groups visiting Coed y Brenin. The least visited sites were Afan (1%) and Cwmcarn (1%). This is in contrast with the 2003/2004 survey, where Afan was the second most visited site behind Garwnant and Cwmcarn was the fourth most visited. **(Figure 2)**.

**Figure 2: Sites visited**



Groups visited a number of sites that were not on the list (33%). Of these other sites, Breidden was the most popular, visited by 5% of groups. **(Figure 3)**

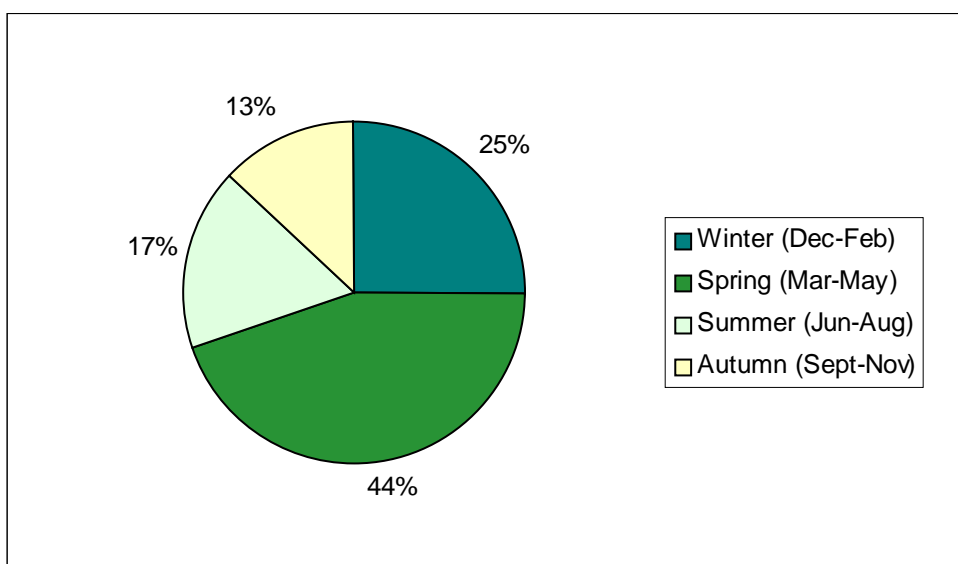
**Figure 3: Selected other sites visited**



### Month of visit

Over two fifths of groups used the Schools Education Service during the spring (44%) and less than one fifth used the Schools Education Service during the summer (17%). One quarter of visits took place in the winter (25%) and 13% took place in the autumn. Compared with 2003/2004, more visits took place in 2005/2006 during the spring and less visits took place during the summer and winter. **(Figure 4)**

**Figure 4: Timing of groups visits to Schools Education Service**

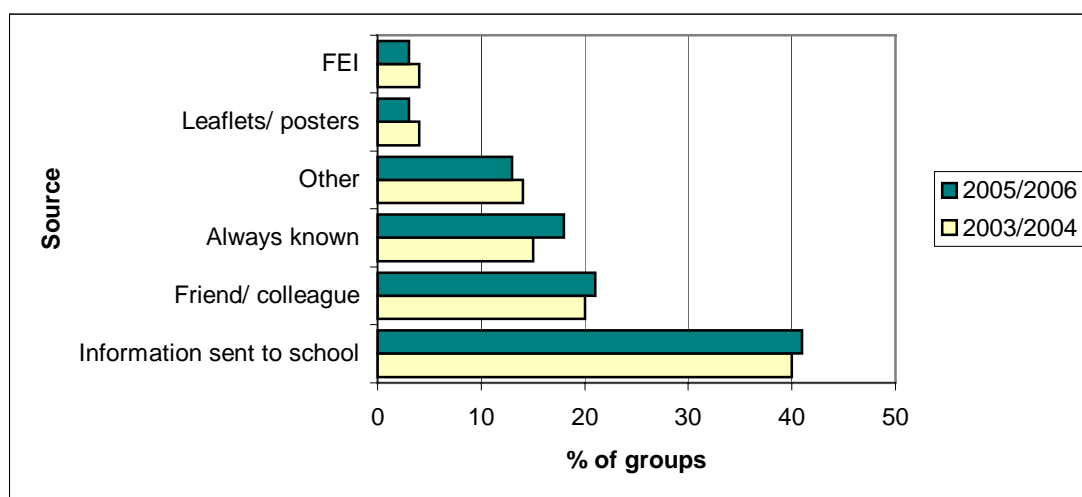


### Finding out about Schools Education Service

Over two thirds of groups had previously used the Schools Education Service (68%). The most frequent response when asked how they found out about Schools Education Service was through information sent to their school (41%). A further 18% had always known and 22% had found out through a friend or colleague. **(Figure 5)**.

Groups listed a number of other sources of information that were not on the list such as Local Education Authorities, Education Business Partnership and through Kate who is one of the forest rangers.

**Figure 5: How schools first learnt of Schools Education Service**



### Prior information

Nearly all groups indicated that they received adequate information prior to their visit (98%). One schools reason for stating that they did not receive adequate information was because they changed course and the other schools reason was they did not know equipment was required.

### Rating the Schools Education Service

Groups were asked to rate<sup>1</sup> aspects of the Schools Education Service and to rate the educational benefit of activities.

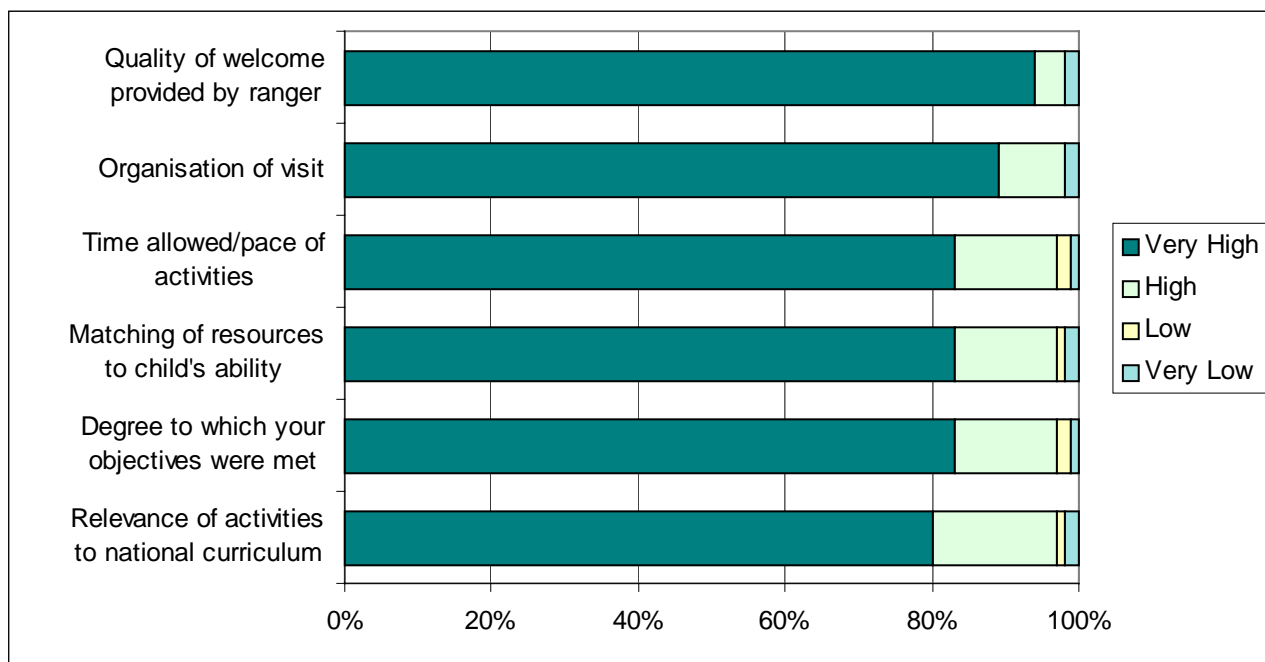
The quality of welcome by the ranger received the highest number of very high ratings (94%), closely followed by the organisation of the visit (89%). 83% rated the

<sup>1</sup> Groups were asked to rate each category as either very low, low, high or very high

matching of resources/activities to child’s ability, degree to which your objectives were met, the time allowed and pace of visit as very high. **(Figure 6)**

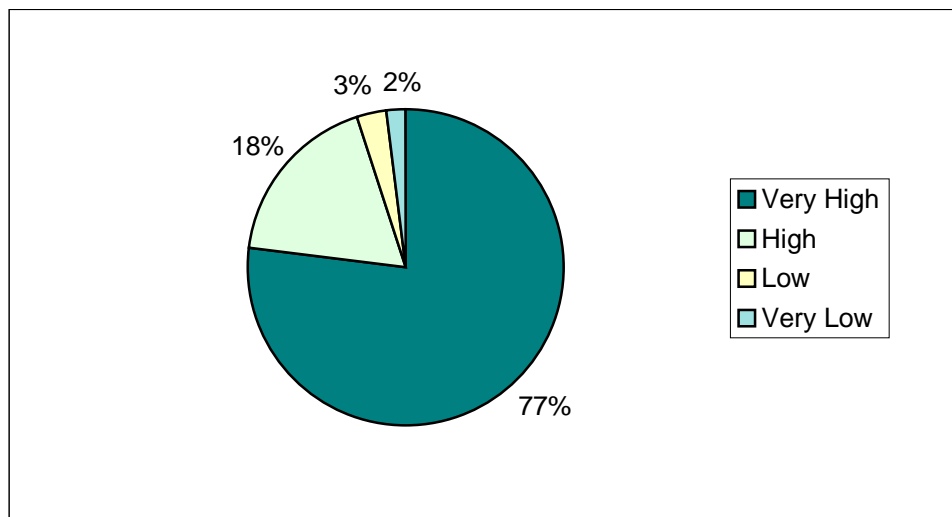
The majority of visitors rated the relevance of activities to national curriculum as very high (80%).

**Figure 6: Rating the Schools Education Service**



Over three quarters of groups rated the overall educational benefits of activities as very high and almost one fifth rated it as high (18%). There were very few low and very low ratings, 3% and 2% respectively. **(Figure 7)**

**Figure 7: Educational benefit of activities**



The educational benefits of each of the following activities received one low/very low rating; puppet show, orienteering, Father Christmas, habitat one, habitat two, making puppets, games. The educational benefits of the following activities received the highest number of very high ratings; tree planting, felling, making puppets and bird feeders.

### **Future Contact**

All groups intend to use the Schools Education Service again. 92% stated that they intend to make use of the paper support material provided by the service and 93% intend to make use of the support material available on the web. Over two thirds of groups indicated that they would be interested in undertaking self-led visits as long as suitable support material was provided.

### **Improvements**

All groups using the schools education service were asked what improvements could be made to the service. A total of 39 groups responded. 24 groups used the opportunity to praise the current service of which 16 were led by Kate Poyner. One group gave special praise to Kate, writing “Kate is excellent”.

The remaining suggestions<sup>2</sup> were; bigger room, bins on trail, could not understand Santa accent, forest activities, introduction before visit, more time needed, need cover in rain, pre-information, stop fee alyn water, summer visit contrast, tell more schools, too cold outside, use river further on, use scientific WS, wheelchair access.

---

<sup>2</sup> The wording of the suggestions listed is the same as the wording of the suggestions written in the questionnaire.

## Forest Enterprise Wales Schools Education Service

**Thank you for using the Forest Enterprise education service. We hope that you found your visit enjoyable and of value. To help us provide a better service, we would appreciate it if you would complete this short questionnaire regarding your visit.**

<b>School Name</b>		<b>Ranger's Name</b>	
<b>Date of visit (dd/mm/yy)</b>		<b>No of children in group</b>	<b>Age range</b>

**1. Which site did you visit?**

*Circle one*

Afan	1	
Coed y Brenin		2
Cwmcarn	3	
Garwnant		4
Gwydyr	5	
Moel Famau		6
Pembrey	7	
Nant yr Arian		8
Another site	9	
Visit to school		10

Specify

**2. How did you first learn of the Forest Enterprise education service?**

*Circle One*

Always known	1	
Friend/ colleague		2
FEI	3	
Information sent to school		4
Newspaper/ magazine advert	5	

Leaflets/ posters	6
Internet	7
Other	8

Specify

**3. Have you ever used our services before this visit?**

*Circle One*

Yes	1
No	2

**4. Did you receive adequate information prior to your visit?**

*Circle One*

Yes	1	<i>Skip to Q5</i>
No	2	<i>Answer Q4a</i>

**4a. If no, what other information would have been helpful?**

**APPENDIX 1 SCHOOLS EDUCATION SERVICE QUESTIONNAIRES 2005/2006**

**5. Please score the following statements from 1 to 4 where 1 is the lowest and 4 is the highest;**

*(circle one number in each row)*

←low high→

**Quality of the welcome provided by the ranger**      1   2   3   4

**The organisation of the visit**      1   2   3   4

**The time allowed and pace of the activities**      1   2   3   4

**Matching of resources/ activities to the ability of the children**      1   2   3   4

**The degree to which your objectives were met**      1   2   3   4

**The relevance of the activities to the National Curriculum**      1   2   3   4

**6. Please score the overall educational benefit of the activities, from 1 to 4 where 1 is the lowest and 4 is the highest (Please list activities);**

*(circle one number in each row)*

←low high→

**Activity1:\_\_\_\_\_**      1   2   3   4

**Activity2:\_\_\_\_\_**      1   2   3   4

**Activity3:\_\_\_\_\_**      1   2   3   4

**7. Do you intend to use our services again?**

*Circle One*

Yes                      1  
No                                      2

**8. Do you intend to make use of the support material we provide.....**

*(circle one number in each row)*

	Yes	No
<b>.... In paper form</b>	1	2
<b>.... On the web</b>	1	2

**9. Would you be interested in undertaking self-led visits with suitable support material?**

*Circle One*

Yes                      1  
No                                      2

10. If there is any way we could improve our service to you, please let us know here;

**Thankyou for taking the time to complete this form**  
**Please return the questionnaire to: Forest Enterprise Wales Education Service, FREEPOST,**  
**Bwlch, Nant yr Arian, Ponerwyd, Aberystwyth, Ceredigion, SY23 3AD.**

Schools Education Survey 2005/2006

Number of children in group

Number of children in group	No.	%
0	6	6
1 - 10	8	8
11 - 20	28	27
21 - 30	31	30
30 or more	30	29
All	103	100
Sum		
	2887	

Age of children

Age of children	No.	%
Nursery to 11 years	89	86
Twelve years and over	7	7
Missing	7	7
All	103	100

Month of visit

Month of visit	No.	%
January	2	2
February	14	14
March	14	14
April	14	14
May	16	16
June	10	10
July	7	7
October	2	2
November	11	11
December	9	9
Missing	4	4
All	103	100

1. Which site did you visit?	No.	%
Afan	1	1
Coedy Brenin	10	10
Cwmcarn	1	1
Garwnant	13	13
Moel Famau	8	8
Nant yr Ari an	6	6
Another Site	34	33
Visit to School	30	29
Total	103	100



APPENDIX 2 SCHOOLS EDUCATION SERVICE TABLES 2005/2006

Schools Education Survey 2005/2006

How did you first learn of Forest Enterprise Education Service

Specify Other Service

- CIRCULAR SENT
- CONTACT SCHOOL PLANT TREES
- COUNCIL LEAFLET
- CYRSIAU ANDURDOD
- EARLY YEARS COURSE
- EBP
- EBP
- EDUCATION BUSINESS PARTNERSHIP
- FRIEND
- HEADTEACHER
- I MADE ENQUIRIES
- KATE
- KATE CAME TO SCHOOL
- KATE PHONED US
- LEA
- LEA ART ADVISOR
- LEA COURSE
- LETTER
- LETTER TO SCHOOL
- LLANRWST FORESTRY
- PHONED SCHOOL
- TELEPHONE CALL
- TODAY

„ff...ffffffff...fffff†  
 , 3. Have you ever used our services before? , No. , % ,  
 †ff~ffffffff~fffff%  
 , Yes , 69, 67,  
 , No , 33, 32,  
 , Missing , 1, 1,  
 , Total , 103, 100,  
 Šff<ffffffff<fffffE

„ff...ffffffffffffffff†  
 , 4. Did you receive adequate information , Total ,  
 , prior to visit? †ffffffff...fffff%  
 , No. , % ,  
 †ff~ffffffff~fffff%  
 , Yes , 100, 97,  
 , No , 2, 2,  
 , Missing , 1, 1,  
 , Total , 103, 100,  
 Šff<ffffffff<fffffE

If No what other information would have been helpful

- CHANGED COURSE
- EQUIPMENT R' QD





Schools Education Survey 2005/2006

Where overall educational benefits of activity are very high

**ACTIVITY ONE VERY HIGH**

--Not Known--  
BIRD BOYS  
INTRODUCTION  
LITERACY TRAIL  
ORIENTEERING  
TREE PLANTING  
--Not Known--  
--Not Known--  
INSET  
INTRO/INFO  
HABITAT INTRODUCTION  
VIDEO/TREES  
--Not Known--  
--Not Known--  
MEET A TREE  
FATHER CHRISTMAS  
SANTA TRAIL  
BIRD FEEDERS  
AUTUMN WALK  
--Not Known--  
HABITATS  
TREE PLANTING  
MAPPING  
--Not Known--  
MAKING FEEDERS  
FOREST TRAIL  
MINI BEAST HUNT  
CUTTING/PLANTING  
BIRD FEEDERS  
FELLUP TREE  
WORMERIES  
--Not Known--  
EDUCATIONAL  
--Not Known--  
BIRD FEEDERS  
BIRD FEEDERS  
--Not Known--  
PARTS OF THE TREE  
TREE FELLING  
TREE FELL & PLANTING  
TREE CUTTING  
SANTA TRAIL  
MINI BEAST HUNT  
--Not Known--  
--Not Known--  
MAKING A MAP  
DIFFERENT TREES  
BACKGROUND  
PLANTING TREES  
TREASURE HUNT  
--Not Known--  
WOODLAND  
SMELLY POTIONS  
MINI BEASTS  
--Not Known--  
ORIENTEERING

Schools Education Survey 2005/2006

Where overall educational benefits of activity1 are very high

**ACTIVITY ONE VERY HIGH**

- Not Known--
- DISCUSSION
- Not Known--
- GIN ADAR
- SCHOOL VISIT
- BROADLEAF SURVEY
- Not Known--
- SYNHWYROU
- LOG PILE
- MAKING NUTS
- ANIMAL HUNT
- WALK
- TREE TALK
- WEB
- VIDEO
- COLOUR MATCH
- XMAS TREE DEVELOPMEN
- INTRO
- WOODLAND EXPLORING
- TALK
- Not Known--
- Not Known--
- COLOUR MATCHING

6. Rating: Overall educational benefits of activity 2			
	Total	No.	%
Very low	1	1	1
Low	4	4	4
High	13	13	13
Very high	52	50	50
Missing	33	32	32
Total	103	100	100

**ACTIVITY TWO VERY LOW**

- Not Known--

**ACTIVITY TWO LOW**

- HABITAT 2
- Not Known--
- GAMES
- MAKING PUPPETS

## Schools Education Survey 2005/2006

**ACTIVITY TWO HIGH**

WALK  
 WORDSEARCH  
 STREAM/POND  
 COLOURS MATCH  
 MINI BEAST HUNT  
 PROFITS OF RIVER  
 SCIENTIFIC  
 IN THE CLASS  
 KITE FLYING  
 TALK  
 BLINDFOLD  
 SHELTER BUILDING  
 SANTA TRAIL

**ACTIVITY TWO VERY HIGH**

BAT BOYS  
 TREE PLANTING  
 ACTIVITIES  
 PRACTICAL ACTIVITIES  
 --Not Known--  
 --Not Known--  
 BOOKMARKS  
 PUPPET SHOW  
 PUPPET SHOW  
 TREE PLANTING  
 BIRD FEEDERS  
 --Not Known--  
 POND DIPPING  
 PUPPETS  
 MINI BEAST  
 MINI BEASTS IN CLAY  
 --Not Known--  
 TRAIL  
 TREE PLANTING  
 PLANTING TREES  
 USE OF CHAIN SAW  
 TREE NEEDS  
 TREE PLANTING  
 RIDDLES  
 TREE PLANTING  
 TREE PLANTING  
 --Not Known--  
 --Not Known--  
 PREPARE  
 POTION MAKING  
 --Not Known--  
 SHELTER BUILDING  
 --Not Known--  
 ENVIRONMENTAL  
 --Not Known--  
 TREE PLANTING  
 --Not Known--

Schools Education Survey 2005/2006

**ACTIVITY TWO VERY HIGH**  
(continued)

- GIN LODYR
- MINI BEASTS
- RIVER SURVEY
- Not Known--
- OBSERVING
- WALK
- MINI BEASTS
- TREE PLANTING
- LIBRARY
- POINT
- MEET A TREE
- PLANTING
- FELT MAKING
- PLANTING
- Not Known--

6. Rating: Overall educational benefits of activity 3			
	No.	%	Total
Very low	1	1	
High	12	12	
Very high	37	36	
Missing	53	51	
Total	103	100	

**ACTIVITY THREE VERY LOW**  
--Not Known--

**ACTIVITY THREE HIGH**

- MINI BEAST HUNT
- SOUNDS
- Not Known--
- RIVER RISKS
- GENERAL KNOWLEDGE
- FATHER CHRISTMAS
- Not Known--
- Not Known--
- ANIMAL HOMES
- MORNING
- TEXTURE MATCH
- TABLE DECOR MAKING

Schools Education Survey 2005/2006

ACTIVITY THREE VERY HIGH

- FOREST SCHOOLS
- OBJECTIVE FOR FUTURE
- OUTDOOR GAMES
- Not Known--
- Not Known--
- STORY
- MAKING PUPPETS
- MAKING PUPPETS
- STORYTELLING
- MASKS
- Not Known--
- WOODLICE
- CHRISTMAS MAGIC
- FATHER CHRISTMAS
- FOREST WALK
- FOOD CHAINS
- STORY TELLING
- STORYTELLING
- CHRISTMAS LOG
- Not Known--
- DESCRIBING TREES
- PLANT
- LEAF FINDING
- Not Known--
- FROGS
- Not Known--
- Not Known--
- TREE LABELLING
- Not Known--
- ORIENTEERING
- PARACHUTE
- POND DIP
- OUTDOOR
- RIVER DIPPING
- Not Known--
- MAKING PICTURES
- FELLING A TREE

„ff...ffffffffffffffffffff†  
 , 7. Do you intend to use our services again?, Total ,  
 , †ffffffffff...ffffffffff%  
 , No. , % ,  
 †ff^ffffffff^ffffffffff%  
 , Yes , 103, 100,  
 , Total , 103, 100,  
 \$ff<fffffffff<ffffffffff€

Schools Education Survey 2005/2006

8. Do you intend to make use of paper support material?		
	Total	
	No.	%
Yes	72	70
No	6	6
Missing	25	24
Total	103	100

8. Do you intend to make use of web support material?		
	Total	
	No.	%
Yes	53	51
No	4	4
Missing	46	45
Total	103	100

9. Would you be interested in undertaking self-led visits?		
	Total	
	No.	%
Yes	67	65
No	28	27
Missing	8	8
Total	103	100

Suggest one way we could improve our service to you

- BIGGER ROOM
- BINS ON TRAIL
- CANT BE IMPROVED
- COULD NOT UNDERSTAND SANTA ACCENT
- ENJOYABLE DAY
- ENJOYABLE MORNING
- EXCELLENT
- EXCELLENT DAY
- EXCELL MORNING
- EXCELLENENTT MORNING
- EXCELLENT SERVICE
- EXCELLENT TRIP
- EXCELLENT VISIT
- EXCELLENT VISIT
- FOREST ACTIVITIES
- GOOD WORK
- HAD A GREAT DAY
- INTRODUCTION BEFORE VISIT
- IT WAS WONDERFUL
- KATE IS EXCELLENT
- KEEP AS IS
- MORE TIME NEEDED

**APPENDIX 2      SCHOOLS EDUCATION SERVICE TABLES 2005/2006**

**Schools Education Survey 2005/2006**

Suggest one way we could **improve** our service to you  
(continued)

NEED COVER IN RAIN  
NO FAULTS  
NONE  
PRE INFORMATION  
QUALITY EXPERIENCE  
STOP FEE ALYN WATERS  
SUMMER VISIT CONTRAST  
TELL MORE SCHOOLS  
THOROUGHLY HAPPY  
TOO COLD OUTSIDE  
TRIP WAS MAGIC  
USE RIVER FURTHER ON  
USE SCIENTIFIC WS  
VERY GOOD  
WHAT WE WANTED  
WHEELCHAIR ACCESS  
WONDERFUL MORNING

APPENDIX 2 SCHOOLS EDUCATION SERVICE TABLES 2005/2006

Schools Education Survey 2005/2006

School Name

The FREQ Procedure

SCHOOL	Cumul ative Frequency	Cumul ative Percent	Frequency	Percent
-----	3	2.91	3	2.91
ABBOTS LANE	3	2.91	6	5.83
ABBOTS LANE INFANTS	1	0.97	7	6.80
ABERDARE BOYS	1	0.97	8	7.77
ABERDARL BAY	1	0.97	9	8.74
ABERTYSSWG	1	0.97	10	9.71
ALL SAINTS C/W PRIMARY	1	0.97	11	10.68
ARDDLEEN	1	0.97	12	11.65
ASTON CLITON	1	0.97	13	12.62
BELMONT INFANTS	1	0.97	14	13.59
BISHOP HEDLEY	1	0.97	15	14.56
BRO CYNFAC	1	0.97	16	15.53
BRO CYNLLAITH	1	0.97	17	16.50
BRO ELWERN	1	0.97	18	17.48
BRO OGWR	1	0.97	19	18.45
BRYNNAU PRIMARY	1	0.97	20	19.42
CAIA PARK NURSERY	3	2.91	23	22.33
CARROG	1	0.97	24	23.30
CEMAES	1	0.97	25	24.27
CHIRK INFANT	1	0.97	26	25.24
CLOCAENOG	1	0.97	27	26.21
COED CAE	1	0.97	28	27.18
COED Y BRAIN	1	0.97	29	28.16
COED Y DOLERWEN	1	0.97	30	29.13
CRADOC	1	0.97	31	30.10
CWMPADARN	1	0.97	32	31.07
CYFFYLLI OG	2	1.94	34	33.01
DINAS MAWDDWY	1	0.97	35	33.98
DORENFELLEN PRIMARY	1	0.97	36	34.95
DYSERTH DENBIGHSHIRE	1	0.97	37	35.92
ERDDIG NURSERY	1	0.97	38	36.89
FERNDALE	1	0.97	39	37.86
FFORDD DYFFRYN	1	0.97	40	38.83
GILFYNYDD PRIMARY	1	0.97	41	39.81
GILWERN	1	0.97	42	40.78
GLYNDYFRDWY	1	0.97	43	41.75
GOETRE INFANTS	1	0.97	44	42.72
GUILSFIELD CP SCHOOL	1	0.97	45	43.69
GWAUNFARREN	1	0.97	46	44.66
HIRADDING	1	0.97	47	45.63
HIRADDUG	1	0.97	48	46.60
INSET	1	0.97	49	47.57
JOHNSTOWN JNR	1	0.97	50	48.54
LLANBEDROG	1	0.97	51	49.51
LLANDYSILIO SCHOOL	1	0.97	52	50.49
LLANELLYD	1	0.97	53	51.46
LLANGEDWYN	1	0.97	54	52.43
LLANHARAN	1	0.97	55	53.40
MADRAS	2	1.94	57	55.34
MADRAS VA PENLEY	1	0.97	58	56.31
MANOD	1	0.97	59	57.28
MOENOFFEREN	1	0.97	60	58.25

APPENDIX 2 SCHOOLS EDUCATION SERVICE TABLES 2005/2006

Schools Education Survey 2005/2006

School Name  
(continued)

The FREQ Procedure

SCHOOL	Cumulative Frequency	Cumulative Percent	Frequency	Percent
NCH	1	0.97	61	59.22
NCH YOUNG CARERS	1	0.97	62	60.19
NEW1 WREXHAM	1	0.97	63	61.17
NORTHOP	1	0.97	64	62.14
NORTHOP SCHOOL	1	0.97	65	63.11
O M EDWARDS	1	0.97	66	64.08
OAKFIELD	1	0.97	67	65.05
OAKFIELD PRIMARY	1	0.97	68	66.02
OSBASTEN INFANTS	1	0.97	69	66.99
PAL FAMILY LIT	1	0.97	70	67.96
PAL FAMILY PROGRAMME	1	0.97	71	68.93
PEN BARRAS	1	0.97	72	69.90
PLASCRUG	1	0.97	73	70.87
PORTHCOWL PRIMARY SCH	1	0.97	74	71.84
QUEENSFERRY	1	0.97	75	72.82
RHYDYWAUN	1	0.97	76	73.79
SANDYCROFT	1	0.97	77	74.76
ST JOSEPHS	1	0.97	78	75.73
ST ROBERTS PRIMARY	1	0.97	79	76.70
THORNWELL	1	0.97	80	77.67
TY MEIRION	1	0.97	81	78.64
TYLORSTOWN PRIMARY	1	0.97	82	79.61
WOOD MEMORIAL	1	0.97	83	80.58
Y CLOGAU	1	0.97	84	81.55
Y FORYD	1	0.97	85	82.52
Y GANLLWYD	1	0.97	86	83.50
YFORYD	1	0.97	87	84.47
YSEOL GYMRAEG	1	0.97	88	85.44
YSGOL AI RADDUG	1	0.97	89	86.41
YSGOL CAER DREWYN	1	0.97	90	87.38
YSGOL CAERDREWN	1	0.97	91	88.35
YSGOL ESTGL MYSE	1	0.97	92	89.32
YSGOL G G TYLERYNN	1	0.97	93	90.29
YSGOL GLAN Y MOR	1	0.97	94	91.26
YSGOL GLYNDYFROWY	1	0.97	95	92.23
YSGOL HJRADDLING	1	0.97	96	93.20
YSGOL LLYWELYN	1	0.97	97	94.17
YSGOL OWEN JONES	2	1.94	99	96.12
YSGOL SANTDUAWBS	1	0.97	100	97.09
YSGOL Y FARYD	1	0.97	101	98.06
YSGOLSANT DUNAWD	1	0.97	102	99.03
YSGOLY CASTELL	1	0.97	103	100.00

APPENDIX 2 SCHOOLS EDUCATION SERVICE TABLES 2005/2006

Schools Education Survey 2005/2006

Ranger's name

The FREQ Procedure

RANGER	Cumulative Frequency	Cumulative Percent	Frequency	Percent
-----				
--Missi ng--	7	6.80	7	6.80
AMY	4	3.88	11	10.68
AMY AND EMMA	1	0.97	12	11.65
AMY PHIL LIPS	6	5.83	18	17.48
CAROL	1	0.97	19	18.45
CAROL TRAVERS	1	0.97	20	19.42
CLIFF	1	0.97	21	20.39
EMMA	1	0.97	22	21.36
EMMA FELKIN	1	0.97	23	22.33
FFION	4	3.88	27	26.21
FFION & KATE	1	0.97	28	27.18
KATE	11	10.68	39	37.86
KATE AND FFION	1	0.97	40	38.83
KATE POYNER	33	32.04	73	70.87
KATE/PHIL EDWARDS	1	0.97	74	71.84
LEIGH	2	1.94	76	73.79
LEIGH AND KATE	1	0.97	77	74.76
LYN WILLIAMS	8	7.77	85	82.52
MARTIN AND CAROL	1	0.97	86	83.50
RACHEL	2	1.94	88	85.44
RACHEL SMITH	2	1.94	90	87.38
RYAN	1	0.97	91	88.35
RYAN MCCLUSKEY	1	0.97	92	89.32
SHEENA	3	2.91	95	92.23
SHEENA O' LEARY	2	1.94	97	94.17
SHEENA/CATHY/CLIFF	1	0.97	98	95.15
SUE GINLEY	1	0.97	99	96.12
WENDY ILLER	3	2.91	102	99.03
YVONNE STREET	1	0.97	103	100.00