

Better woodlands for Wales

News from Forestry Commission Wales Grants and Regulations • Issue 24 • March 2010

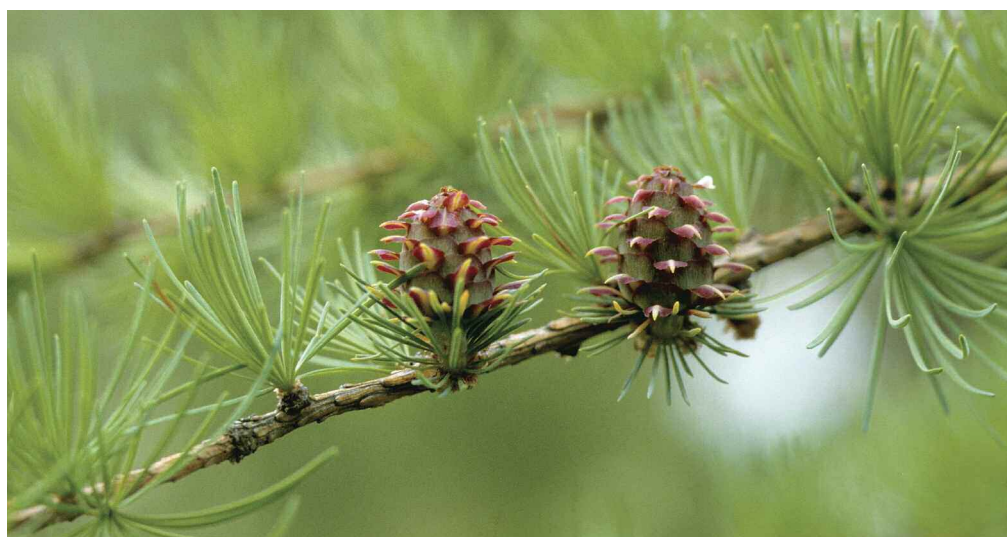
Contents

Update training
Grants under the microscope
New rules for tracks
Specialist assessments
First Steps
Common land
GLOS update
Glastir

BWW update training - please book a day

Thanks to everyone who took the time to send in suggestions for our next update training day for planners. Dates and venues have now been confirmed and you should have received an email requesting that you book

your attendance at one of the days. Planner assistants are also welcome to attend if they wish. The training is mandatory for all planners who wish to stay on the approved list.



STOP PRESS

NEW PHONE NUMBER

From 23rd November 2010 the telephone number for the Forestry Commission Wales contact centre has changed to 0300 068 0300. All calls to this number are charged at a standard national landline rate even if you are calling from a mobile.

The old number will automatically divert calls for a 3 month period then there will be a message with the new number for a further 3 months.

Next issue

Issue 25 May 2010

Current issue and back issues available on the FCW website:
www.forestry.gov.uk/wales

Grant re-alignment

The Grants and Regulations team is investigating whether the BWW grants that we offer need to be re-aligned to better deliver the priorities set out in *Woodlands for Wales*, the Welsh Assembly Government's strategy for woodlands and trees in Wales. In doing this, we will also be re-evaluating the standard costs for planting new woodland.

We are grateful to a number of management

planners that we contacted for responding to our request for information, which will assist us in this exercise. To complement this process, we are also re-visiting the Improved Land Premium payment costings, the area-based payment for land taken out of production when new woodland is created.

Based on our findings, a decision will be made as to how we should proceed in April 2010.

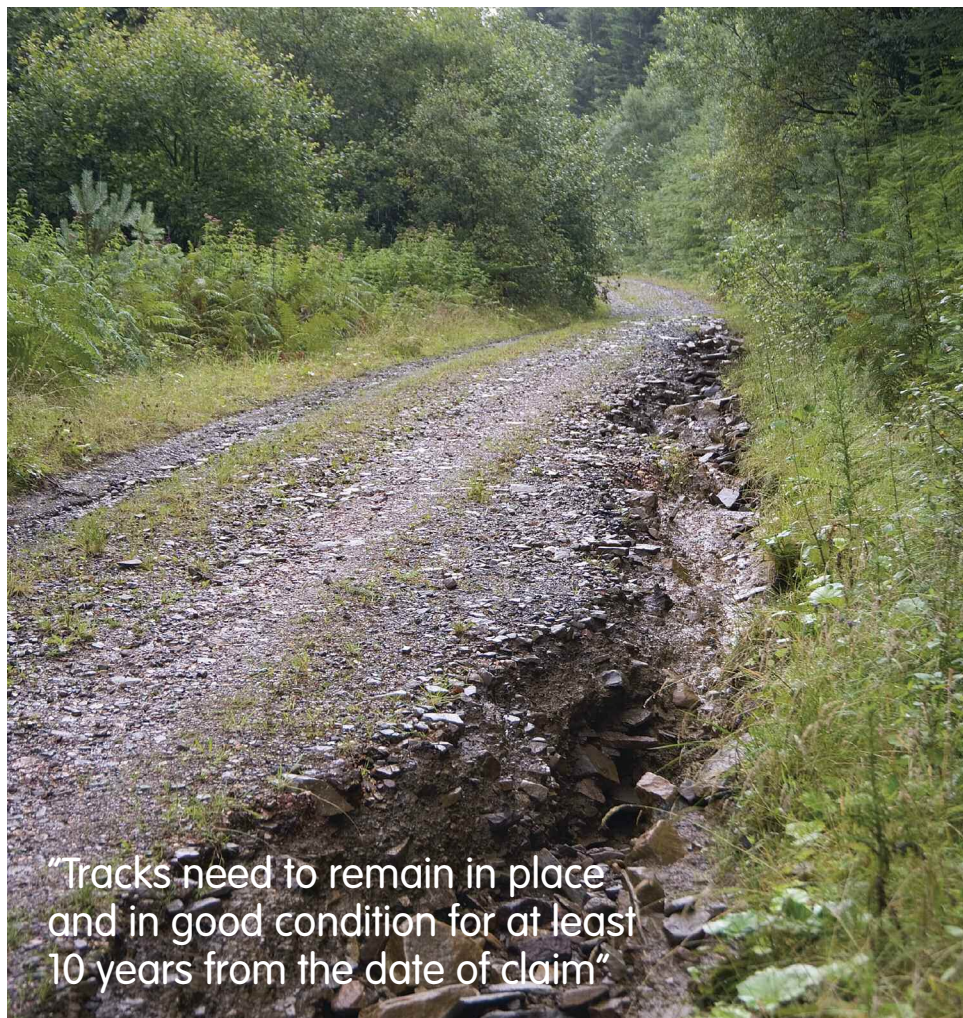


Streamlining BWW - New rules for tracks

We are currently carrying out a major review of BWW business processes, rules and grants simplifying where possible. The review will be a staged process that should be complete by summer 2010. We will update our business rules and other supporting documents as this process moves forward.

We have considered the business rules in relation to tracking and have made the following changes:

Tracks need to remain in place and in good condition for at least 10 years from the date of claim. This means that any funded tracks, both new and upgraded, need to have brush removed and, if damaged, be restored to good condition following harvesting. The upgrading of existing stone tracks is no longer eligible for BWW funding as this is effectively maintenance, which is something that cannot be funded under BWW.



“Tracks need to remain in place and in good condition for at least 10 years from the date of claim”

Specialist assessor review

As part of this review we are considering the role and use of specialist assessments and whether these will remain. Until this review is over we will not be training specialist assessors. This should be completed by summer 2010.



First Steps scheme

Following two initial pilots of First Steps, FCW is looking to launch the First Steps scheme as one of its woodland grant schemes. The First Steps scheme is intended to act as a starting point for realising the outcomes of *Woodlands for Wales*, through engagement with landowners who may be willing to undertake small-scale woodland creation and protect and enhance their existing woodlands. Under First Steps we expect to encourage landowners to take the next step into woodland creation and management through agri-environment and woodland grant schemes.

A short, informal consultation exercise has been undertaken and a number of responses have been received. A frequently asked question was whether Improved Land Premium can be claimed additionally to First Steps payments and whether areas of new planting will affect Single Payment Scheme claims. We have requested a decision from Rural Payments Wales's policy officials to these questions and we await their response.

It is FCW's intention to deliver First Steps through an external delivery partner and we expect to begin the tender process in April 2010, with a view to announcing the successful bidder and launch the First Steps scheme at the Royal Welsh Agricultural Show in July 2010.

Common land - eligibility for BWW

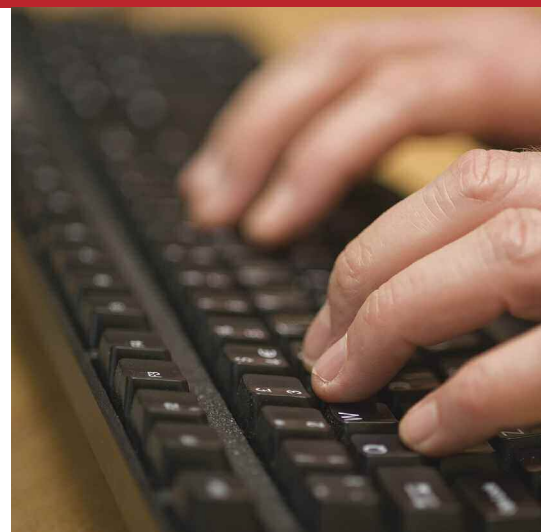


Common land may be eligible for BWW grants. Detailed information on who has rights to the land is maintained by the local authority. You might consider checking with them what impact proposed prescriptions would have on other users of the common

and ensure that they are all in agreement with the proposals. Common land is the only land which cannot be registered with WAG. However the cross-checking process will pick up on any dual funding or incompatibility issues with other agri-environment schemes

Glastir

WAG's Farm Liaison service will be organising SAF (single application form) meetings and on-farm training throughout Wales which will give information on the new Glastir scheme. There will be an article in GWLAD giving dates and information. Please contact your nearest WAG divisional office for more information.



Time saving tips and updates in GLOS

The latest release of software into the BWW database took place on 12th March. This release included enhancements to the mapping on management plan and contract reports, which were developed in response to comments from both planners and FCW staff.

There will now be a single location map identifying all of the areas covered in the plan, and 3 further sets of maps showing **Felling and Planting, Other Operations** mapped as points and lines (P&L), and **Other Operations** mapped as polygons (Poly). A legend will appear in the reports in front of the map section, to explain what is shown on each of the map types.

It will now be possible to request two further types of amendment. Alterations can be made to the **Long Term Policy** on a plan as well as requesting changes to **Features** in the plan. Our amendment forms will be altered to add these types of amendments to those that can be requested.

Do not reply to automatically generated emails from GLOS. If you do, the email will automatically be deleted.

Contact us...



For general BWW enquiries, telephone:
or log on to:
For, technical queries, email:
For the GLOS Service link:
Suggestions for future issues, email:

0300 068 0300
www.forestry.gov.uk/wales
bww.ts@forestry.gsi.gov.uk
www.eforestry.gov.uk
alison.evans@forestry.gsi.gov.uk