



EWGS Customer Liaison Seminar Environmental Stewardship Update

Stephen Lund

Solway, Border and Eden Land Management Team Leader

Monday 28th November 2011

www.naturalengland.org.uk

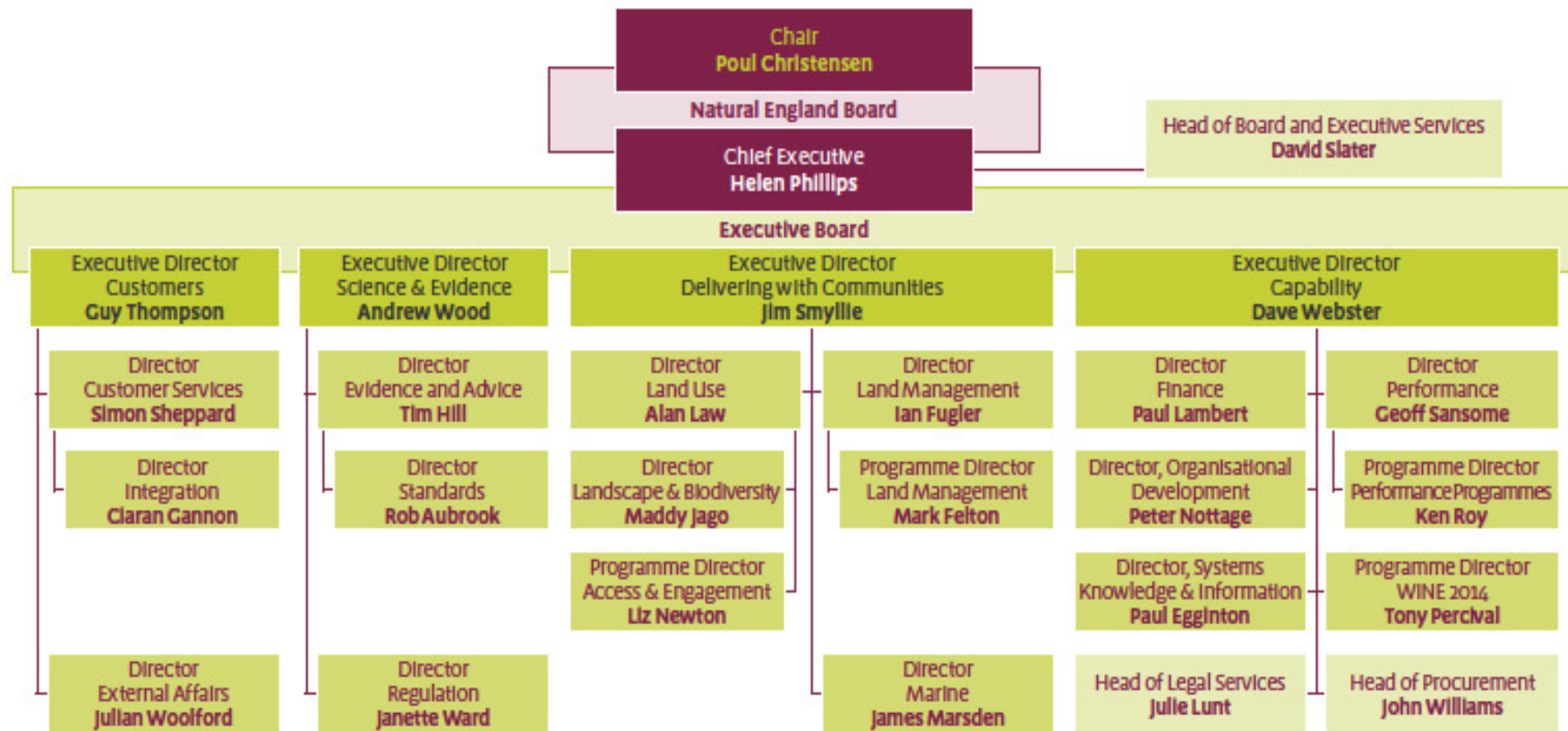
Introduction



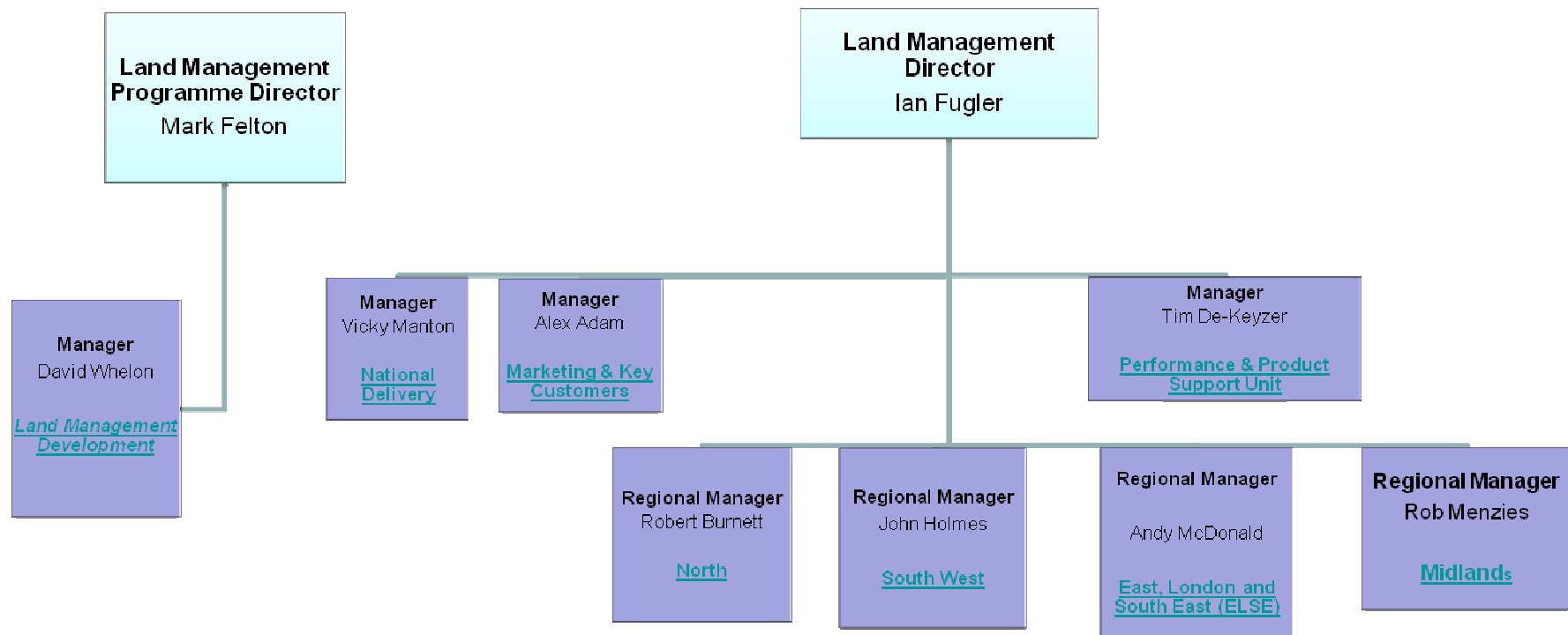
- Natural England Structures
- HLS Budgets and Pipelines
- Scheme Coverage
- Local Challenge
- HLS and UELS Objectives

Natural England management arrangements

Executive Board and reporting lines
From 1 April 2011



Land Management Directorate



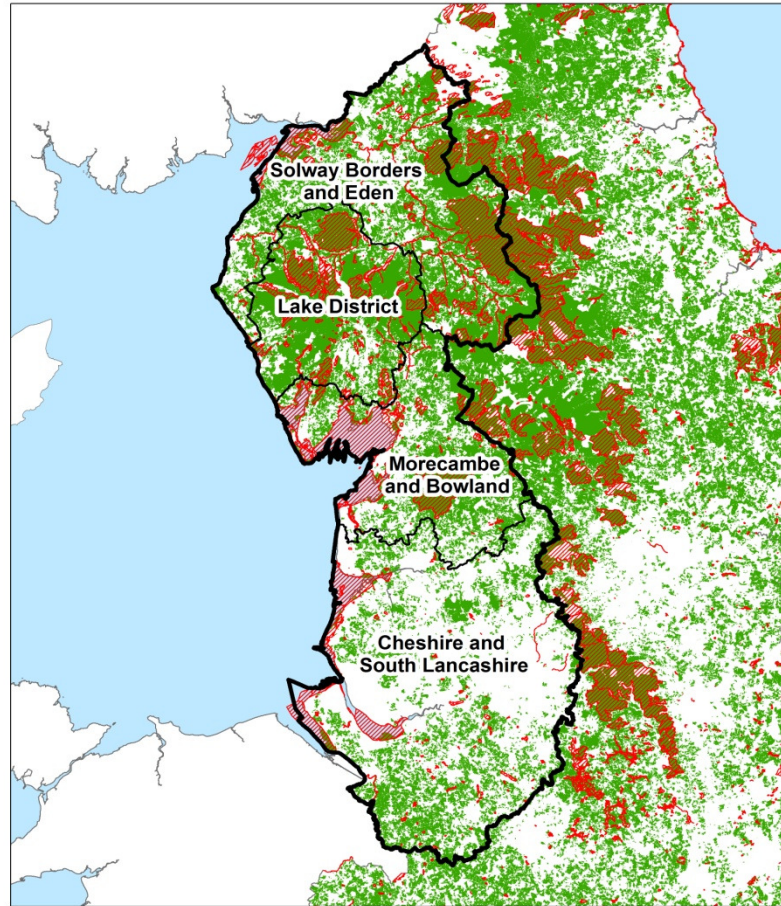
Team Structures



- Moved to vertical functional teams
- No north west regional structure – new northern area of 10 land management teams
- Four local land management teams:-
 - Solway, Border and Eden – Steve Lund
 - Lake District – John Redgate
 - Morecambe Bay and Bowland – Sam Marsden
 - Cheshire, Greater Manchester, Merseyside, South Lancs - Alex Lowe
- In addition, Land Use, Landscape and Biodiversity, Access and Engagement and Marine Teams operating locally
- Area Manager to provide link and “join up” across functions

Team Structure

NATURAL
ENGLAND



Area of Interest Overview Agri-Environment Agmts & SSSI's

- SSSI's
- ES/CSS/ESA Agreements October 2011
- North West Local Team Boundaries

0 12.5 25 50 Km

GIU - 110224

© Crown copyright and database right (2011)
Ordnance Survey Licence number 100023021
Mapped by - Carrie Mackay Analysis & Evidence Team

NATURAL
ENGLAND

HLS Budgets



- National Budget for new HLS agreements for 2012/13 circa £40m
- Northern Regional budget £13.9m
 - 900 agreements - an average of £15k each
- 2013/14 budget likely to be similar but will have to be delivered by December 2013
- 2012/13 and 2013/14 budgets may be boosted by ELS underspend
- Annually we pay out £400m in agri-environment scheme payments

Environmental Stewardship



- Includes ELS / UELS and HLS
- Opportunities for ALL eligible farmers in ES and involvement is voluntary
- For many farmers the successor to ESA or CSS will be ELS or UELS and will support delivery of a range of environmental outcomes usually with limited change needed to farming practices.
- UELS will equate to similar levels of farm management as ESA and will be the appropriate successor scheme for many expiring classic schemes
- HLS is competitive and delivers specific outcomes and will require greater changes to farm management practices for many applicants.

- Targeted competitive scheme to complement ELS and UELS
- Management plans and capital works plans
- Objectives
 - Conserve wildlife (biodiversity)
 - Maintain and enhance landscape
 - Protect historic environment
 - Promote public access
 - Protect natural resources – water quality / soil erosion
 - Secondary objectives of genetic conservation and flood management
- Objectives designed to support climate change adaption and mitigation

HLS Outcomes



- National Targets to deliver:-
- increase agricultural land in HLS by 250,000ha
- secure 80,000ha more priority habitat under favourable management – BAP Habitat
- RDPE & CSF advice and capital grants delivers improved resource protection – 500k ha
- Increase ELS options that deliver biodiversity, climate change, historical, landscape and resource protection objectives by 5%
- Reduce Unit Cost of HLS Delivery by 9%
- Maintain area of SSSI in favourable or unfavourable recovering condition – 97%
- Increase the area of SSSIs in favourable condition by 5000ha
- Various monitoring and reviewing targets

Current Scheme Coverage



Team	SSSI ha	ESA		CSS		HLS	
		No. Agmts.	ha	No. Agmts.	ha	No. Agmts.	ha
Sol,Brd Eden	58,698	156	3,689	313	36,486	342	65,478
Lake District	42,276	735	106,525	30	3,739	193	49,706
M.Bay +BwInd	69,175	160	7,472	173	15,679	218	39,722
Ches. Lancs	31,967	33	1,870	257	17,175	214	23,893
Totals	202,116	1,084	119,556	773	73,079	967	178,799

The Challenge



- Signpost all expiring schemes to ELS or HLS – 1857 schemes
 - We expect circa 40% of classic schemes to move to HLS
 - So rest will be ELS / UELS
- Sign up all expiring schemes with “at risk” SSSIs into HLS
- Increase the area of SSSI in favourable or recovering condition from 97%
- Increase the area of SSSIs in favourable condition to 50% by 2020
- Scheme post 2013?

- New processes introduced to provide national consistency and to accommodate staffing reduction:-
 - Application Pipelines – providing clear timetable and deadlines
 - HLS clinics for FEP agents
- Constraints
 - Staff resource
 - Funding
 - Need to manage expectations
- Support
 - Local partnership delivery – key to successful delivery
 - Clear work programme
 - Early commitment to HLS

Outcomes



- Targeting and Prioritisation
 - Lot of work done by partners
 - Targeting statements identify focus for limited resources
 - Opportunity mapping in Lake District
- Multiple Outcomes
 - Above work has identified multiple outcome sites
 - Habitat restoration – on and off SSSIs
 - Carbon storage and sequestration
 - Securing cultural and historic environment (including viable businesses)
 - Increasing resilience to climate change
 - Improving water quality and drinking water supplies

Outcomes cont.



- Scrub and woodland creation
 - Resulting in improved landscape, carbon storage, wildlife corridors, soil protection and water quality improvements
 - Targeted to fit with farm / estate management
- Delivering Change
 - Sustainable grazing, particularly for significant habitat restoration
 - Blanket bog restoration
 - River Restoration
 - Scrub and upland woodland management and creation



www.naturalengland.org.uk

