



Garwnant



- Cerdded** ● **Walks**
- Llwybrau beicio mynydd mini MTB** ● **Mini mountain bike trails**
- Trwyddedau pysgota** ● **Fishing permits**
- Bwyty** ● **Restaurant**
- Parc chwarae antur** ● **Adventure play area**
- Lle chwarae i blant bach** ● **Toddlers playground**
- Llwybr pos anifeiliaid** ● **Animal puzzle trail**
- Parc beiciau** ● **Bike park**
- Cyfleusterau cynhadledd** ● **Conference facilities**



Lleolir 5 milltir i'r gogledd o Ferthyr Tudful ar y A470 uwchben cronfa ddŵr Llwyn Onn. Dilynwch yr arwyddion.

Located 5 miles north of Merthyr Tydfil on the A470. Follow the signs and turn off above Llwyn Onn reservoir.

Fwy o wybodaeth...

Canolfan Ymwelwyr
Cwm Taf
Merthyr Tudful
CF48 2HT
Ffôn: 0300 068 0300

www.forestry.gov.uk/cymru

To find out more...

Garwnant Visitor Centre
Cwm Taf
Merthyr Tydfil
CF48 2HT
Tel: 0300 068 0300

www.forestry.gov.uk/wales

Os oes angen y cyhoeddiad hwn mewn ffurf arall arnoch, er enghraifft, mewn print bras neu mewn iaith arall, cysylltwch:

Y Tîm Amrywioldeb,
Ffôn: 0131 314 6575
E-bost:

diversity@forestry.gsi.gov.uk

If you need this publication in an alternative format, for example, in large print or in another language, please contact:

The Diversity Team,
Tel: 0131 314 6575
E-mail:

Dysgu yng Ngharwnant

Mae Tîm Coetiroedd ar Gyfer Dysgu Comisiwn Coedwigaeth Cymru yn cynnig ymweliadau coetir ar gyfer ysgolion i'r fan yma. Cysylltwch â Swyddog Addysg Garwnant ar 0300 068 0300

Learning at Garwnant

Forestry Commission Wales' Woodlands for Learning Team offers woodland visits here for schools. Please contact the Education Officer for Garwnant on 0300 068 0300.



Mae coetiroedd y Comisiwn Coedwigaeth wedi eu hardystio'n unol â rheolau SGS-FM/COC-000358 y Cyngor Stiwardiaeth Coedwigoedd © 2006 Cyngor Stiwardiaeth Coedwigoedd AC



Forestry Commission woodlands have been certified in accordance with the rules of the Forest Stewardship Council SGS-FM/COC-000358 © 2006 Forest Stewardship Council AC

Argraffwyd y ddogfen hon ar Revive 50:50 Offset, papur wedi'i ailgylchu a gynhyrchir gan ddefnyddio 50% ffibr adferedig a 50% ffibr pren gwyrif.

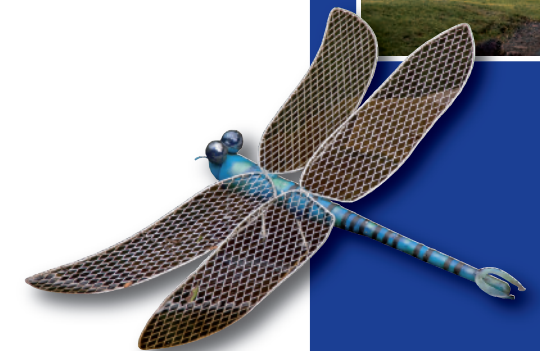


Mixed Sources
Product group from well-managed forests, controlled sources and recycled wood or fibre
www.fsc.org Cert no. SGS-COC-04958 © 1996 Forest Stewardship Council

Printed on revive 50:50 Offset a recycled paper containing 50% recovered waste and 50% virgin fibre

Hwyl i'r teulu i gyd

Fun for all the family





BRECON BEACONS NATIONAL PARK

Croeso i Garwnant

Garwnant yw'r fynedfa ddeheuol i Barc Cenedlaethol Bannau Brycheiniog

Rydym wedi gweddwedd Garwnant yn gyfan gwbl i gynnwys caffi newydd, cyfleusterau cynhadledd, canolfan gwybodaeth a thoiledau. Rhowch gynnig ar ein llwybrau cerdded, ardal chwarae plant, llwybrau beicio mynydd mini MTB, amrywiaeth o ddiwyddiadau cyffrous a llawer, llawer mwy.

Welcome to Garwnant

Garwnant is the southern gateway to the Brecon Beacons National Park.

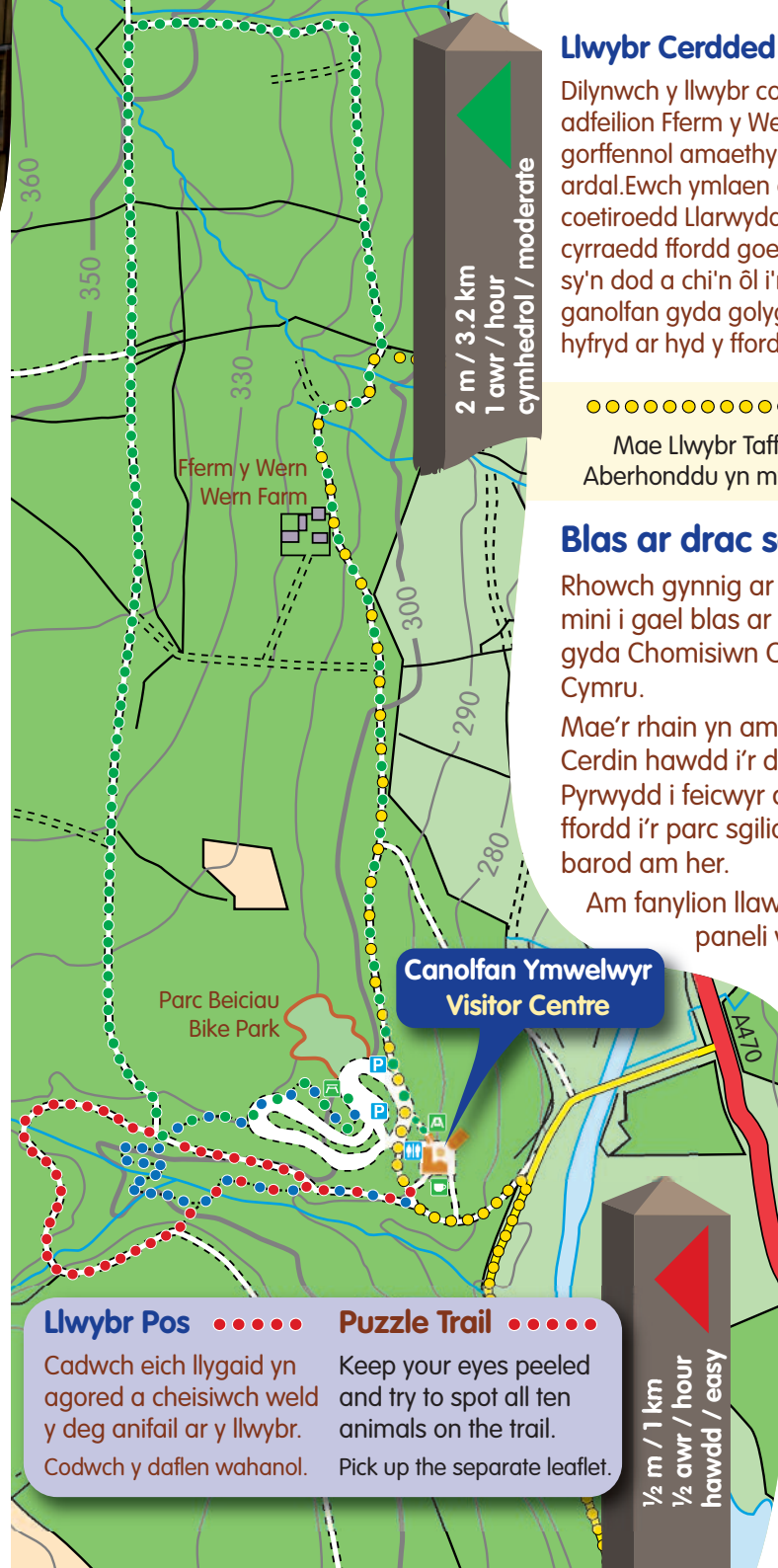
We have completely transformed Garwnant to include a new restaurant, education / conference facilities, information centre and toilets. Try our forest walks, children's play area, mini-MTB mountain bike trails, range of exciting events and much, much more.

Llwybr Cerdded Helygen Willow Walk

Rydym wedi ailwampio'r llwybr pob gallu cymedrol yma i gynnwys nifer o groesfannau ar draws nentydd. Cychwyn o'r maes parcio a mynd heibio i goed mawr. Ewch ymlaen i groesi tair pont a mynd drwy dwnnel helyg cyn dychwelyd i tu blaen y ganolfan.

We have revamped this gentle all-ability trail to include a number of stream crossings. Start from the car park passing large trees. Carry on to cross three bridges and go through a willow tunnel before returning to the front of the centre.

1/2 m / 1 km
1/2 awr / hour
hawdd / easy



2 m / 3.2 km
1 awr / hour
cymedrol / moderate

Llwybr Cerdded y Wern Wern Walk

Dilynwch y llwybr coetir yma heibio i adfeilion Fferm y Wern, sy'n amlygu gorfennol amaethyddol yr ardal. Ewch ymlaen drwy'r coetiroedd Llarwydd nes cyrraedd ffordd goedwig sy'n dod a chi'n ôl i'r ganolfan gyda golygfeydd hyfryd ar hyd y ffordd.

Follow this woodland trail past the ruins of Wern Farm, revealing this area's agricultural past. Carry on through Larch woodlands to reach a forest road to bring you back to the centre with good views along the way.



Llwybr Taff Taff Trail

Mae Llwybr Taff hirbell o Gaerdydd i Aberhonddu yn mynd drwy Garwnant.

The long distance Taff Trail from Cardiff to Brecon passes through Garwnant.

Blas ar drac sengl

Rhowch gynnig ar ein llwybrau MTB mini i gael blas ar feicio mynydd gyda Chomisiwn Coedwigaeth Cymru.

Mae'r rhain yn amrywio o lwybr y Cerdin hawdd i'r di-brofiad, i lwybr y Pwrwydd i feicwyr canolradd, yr holl ffordd i'r parc sgiliau i bobl ifanc sy'n barod am her.

Am fanylion llawn, edrychwch ar y paneli wrth y llwybrau.

A single-track taster

Try our mini-MTB trails to get a flavour of Forestry Commission Wales mountain biking.

These range from the easy Rowan trail for first-timers, the Spruce trail for intermediates, all the way to the skills park for young tricksters.

For full details see the panels by the trails.



Canolfan Ymwelwyr Visitor Centre

Llwybr Pos Puzzle Trail

Cadwch eich llygaid yn agored a cheisiwch weld y deg anifail ar y llwybr. Codwch y daflen wahanol.

Keep your eyes peeled and try to spot all ten animals on the trail. Pick up the separate leaflet.

1/2 m / 1 km
1/2 awr / hour
hawdd / easy

