



What is a Dark Sky Park?

A Dark Sky Park is a place with **exceptionally dark night skies**, a place where people have committed to keeping those skies dark, by controlling light pollution.

In November 2009, the International Dark-sky Association designated Galloway Forest Park as only the fourth Dark Sky Park in the world and the **first in the uk**.

But that's not all. The Galloway Park is **REALLY** dark - a Gold Tier Dark Skies park. Very few people live in the 300 square miles of forest and hills in the park so nights really are black - apart from the stars!

Forestry Commission Scotland and the people of the park are committed to keeping it that way.



Other Dark Sky Park's around the world: Natural Bridges National Monument (Utah), Cherry Springs State Park (Pennsylvania), Geuga Park Districts Observatory Park (Ohio), Zselic Landscape Protection Area (Hungary)

Welcome to the UK's first Dark Sky Park.

You have entered an area of **wonder & exploration**. All around you are plants and animals that rely on the daytime sun. But at night, we enjoy a perfectly dark sky, studded with thousands of stars and the Milky Way stretching overhead from horizon to horizon.

Here you can gaze and wonder at the **magic of the night sky**, just as your ancestors have done for thousands of years.

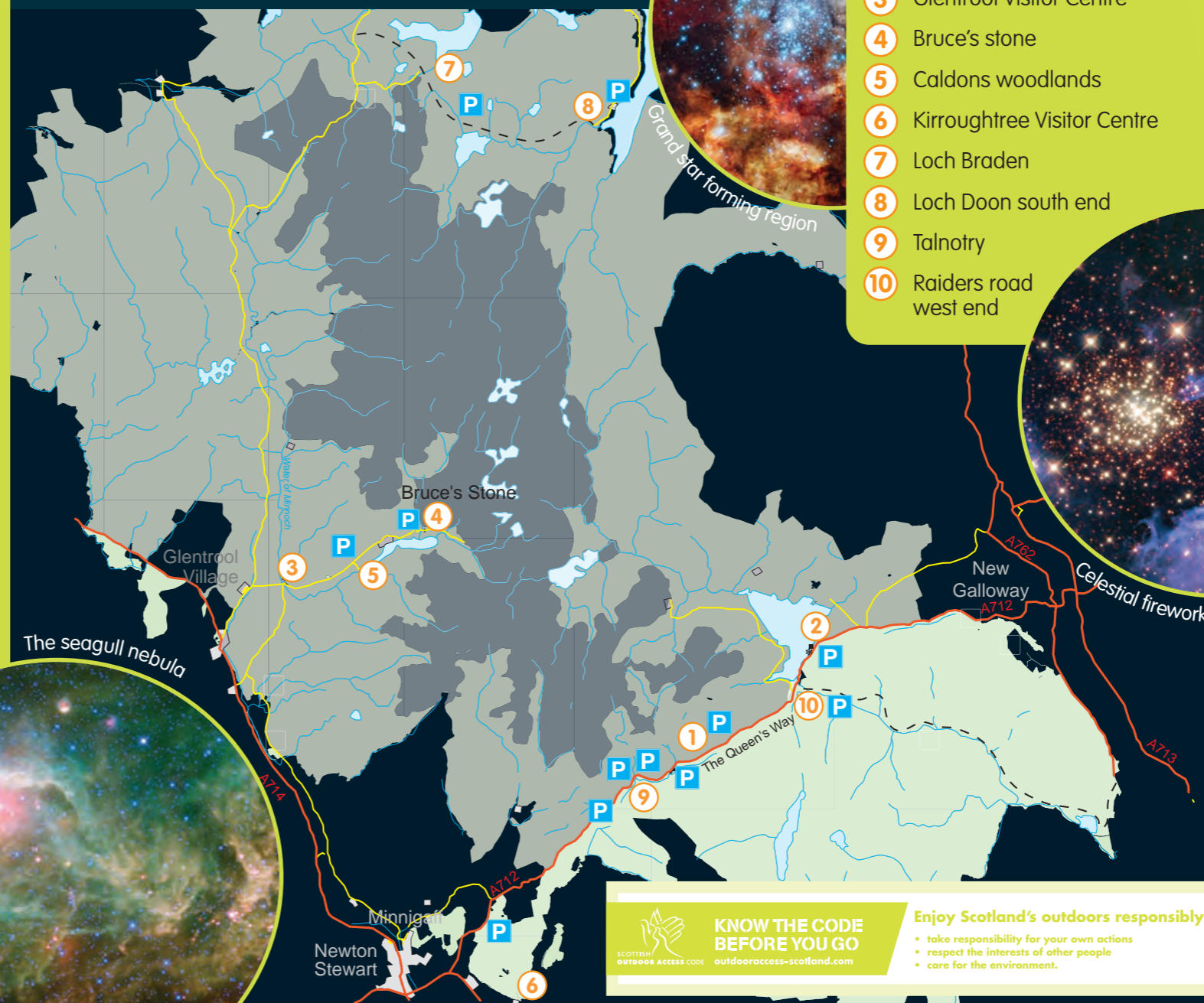
Grab a pair of binoculars, some warm clothing and head out. You will **discover wonders** that few people get a chance to see these days. Light pollution in modern towns and cities has drowned out all but the brightest stars. But not here in the Dark Sky Park - a darkness that needs to be protected.

Fàilte don chiad Phàirc nam Speuran Dorcha ann am Breatainn

Tha sibh air thighinn a-steach a shaoghal **mhiorbhail is rannsachaidh**. Mun cuairt oirbh tha lusan is ainmhidhean agus iad uile an urra ris a' ghrèin. Air an oidhche, ge-tà, gheibhear an seo speuran dubha dorcha, is milltean de reultan ri fhaicinn. Faodar gabhail sealladh agus **iongantais air beartas na h-oidhche**; mar a rinneadh bho sheann leis na sinnsearan againn.

'S e Pàirc nam Speuran Dorcha, raon far am faighear **fior speuran dubha dorcha**, agus na daoine ag amas air na speuran seo a chumail dorcha; le smachd ga cumail air truileadh sholas. Le cho beag de dhaoine a' fantainn sa phàirc seo, is oidhcheannan dubha dorcha **dhà-rìribh** a gheibhear innte - ach solas nan reultan a-mhàin!

Where to view the wonders of the night sky in Galloway Forest Park



- 1 Galloway Red Deer range
- 2 Clatteringshaws Visitor Centre
- 3 Glentrool Visitor Centre
- 4 Bruce's stone
- 5 Caldons woodlands
- 6 Kirroughtree Visitor Centre
- 7 Loch Braden
- 8 Loch Doon south end
- 9 Talnotry
- 10 Raiders road west end

Light Pollution

The glow you often see spilling out into the night sky from our towns and cities makes it much harder to see the stars. This is caused by too much and poorly designed lighting in our urban areas. It can also:

- waste vast amounts of money
- disturb wildlife
- disturb people & their sleep
- cause medical health problems

Switch off or point down!

light pollution

Contact

Forestry Commission Scotland,
Galloway Forest District, Creebridge,
Newton Stewart DG8 6AJ
Tel: 01671 402420
E-mail: galloway@forestry.gsi.gov.uk
www.forestry.gov.uk/darkskygalloway
Public enquiry line 0845 FORESTS (367 3787)

If you need this leaflet in an alternative format, for example, large print or another language, please contact:
The Diversity Team
Tel: 0131 314 6575
E-mail: diversity@forestry.gsi.gov.uk

KNOW THE CODE BEFORE YOU GO
SCOTTISH OUTDOOR ACCESS CODE
outdooraccess-scotland.com

Enjoy Scotland's outdoors responsibly

- take responsibility for your own actions
- respect the interests of other people
- care for the environment.

So just what can you see when you visit the park?

You could be one of only a few people in the United Kingdom to see the Milky Way our very own Galaxy, which shows up in our sky as wispy cloud running across the sky. You see it as cloud due to the sheer number of stars in it! Look even closer and you might even see Andromeda our nearest galaxy.

The easiest objects to see are our own stars and with the help of these star charts you should be able to spot a few!

A distant galaxy 100million light years away

You will need...

- ★ Warm clothing
- ★ Binoculars
- ★ Torch (preferably with a red filter)
- ★ Hat & gloves
- ★ Stout shoes/ boots

What to look out for...

Looking up at the stars in the night sky, you can see that some of them make up patterns and shapes, called constellations. Every culture around the world has joined the dots in the night sky and created legends behind these.

The star maps here show some of the more obvious constellations visible from Galloway Forest Dark Sky Park throughout the year.

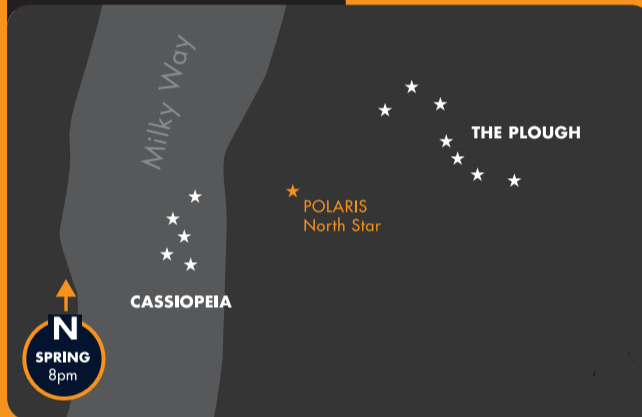
How many stars can you name? Can you find Orion the Hunter? Cygnus the Swan? The Plough? Some constellations are only visible at certain times of the year.

Can you find north?

Use the two stars at the end of the Plough, known as the pointer stars, to trace a line to the faint North Star, the Pole Star or Polaris. If you stand facing this star you will be pointing North.

Open star cluster known as the wizard nebula

Looking North



Looking South

