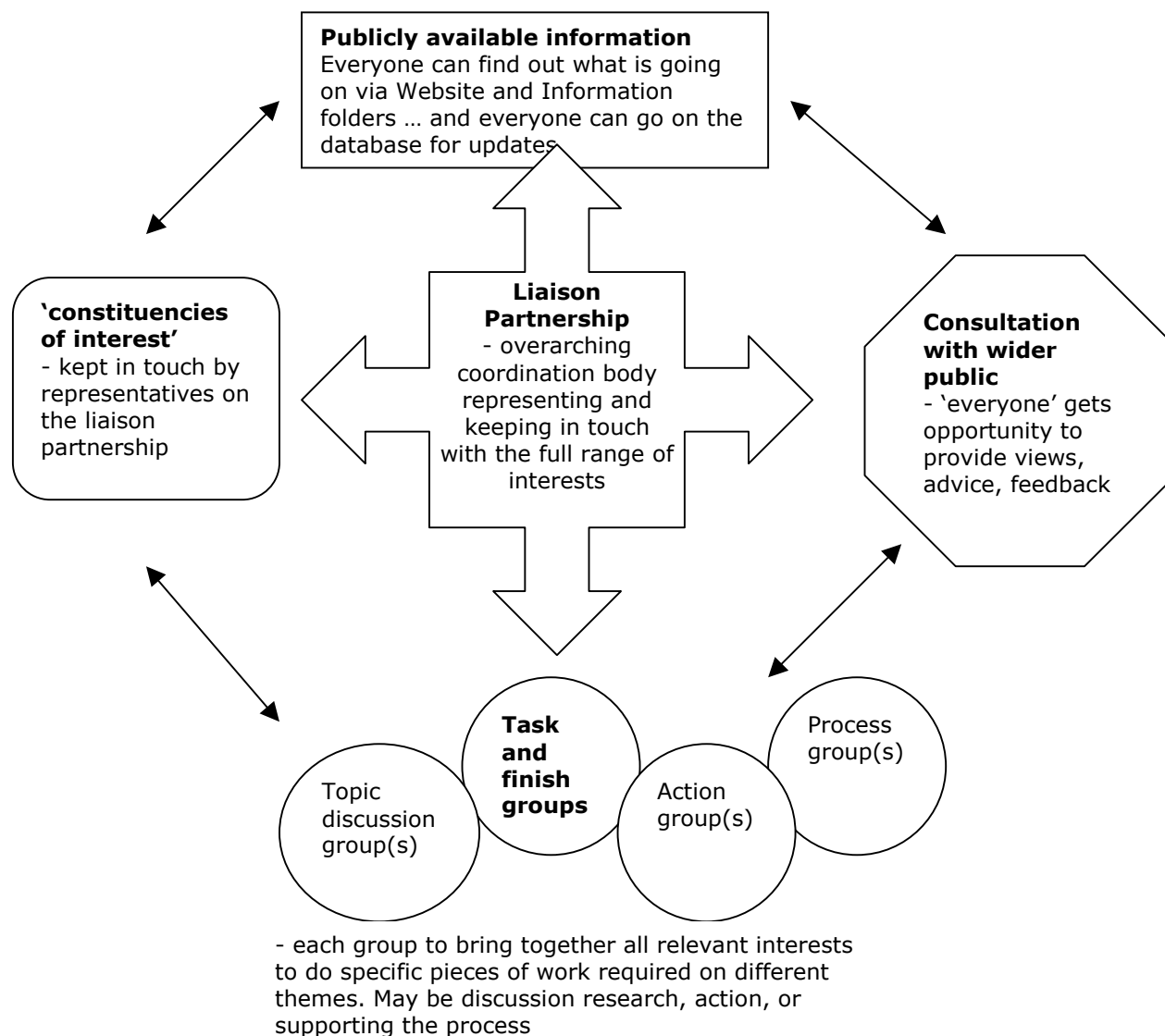


Newborough Forest and Warren Area – how we will work together



Working through:

1. Setting up the scope (what issues will be covered, key themes) and process of working together
2. Identifying, consulting on and undertaking any 'quick actions' to enhance the area without controversy
3. Building capacity, generating interest, improving representation of interests, sharing essential information and terminology, site visits etc
4. On key issues: discussion in task and finish groups to identify full range of options for enhancing social, environmental and economic value
5. Bringing together the options to create and describe number of possible 'scenarios' to put to public consultation, together with sets of criteria against which scenarios can be evaluated
6. For each scenario that is shown to be of interest to the public, identify key concerns, uncertainties and weaknesses, consider how these could be addressed
7. On basis of above analysis, making and consulting on recommendations for preferred way forward to appropriate bodies
8. Taking action and monitoring.