

COST E50 CEMARE
April 11.-12. 2008, Ljubljana, Slovenia
“Wound reactions in trees and wood quality”

Compartmentalization of injured Scots pine sapwood

Martti Venäläinen¹⁾, Anni Harju¹⁾, Stefan Willför²⁾,
Suvi Pietarinen²⁾, Diane Pavillet, ³⁾ and Tapio Laakso⁴⁾

¹⁾Finnish Forest Research Institute (Metla), Punkaharju Research Unit
²⁾Åbo Academi, Process Chemistry Centre
³⁾Ecole Nationale Supérieure Agronomique de Montpellier
⁴⁾Finnish Forest Research Institute (Metla), Vantaa Research Unit

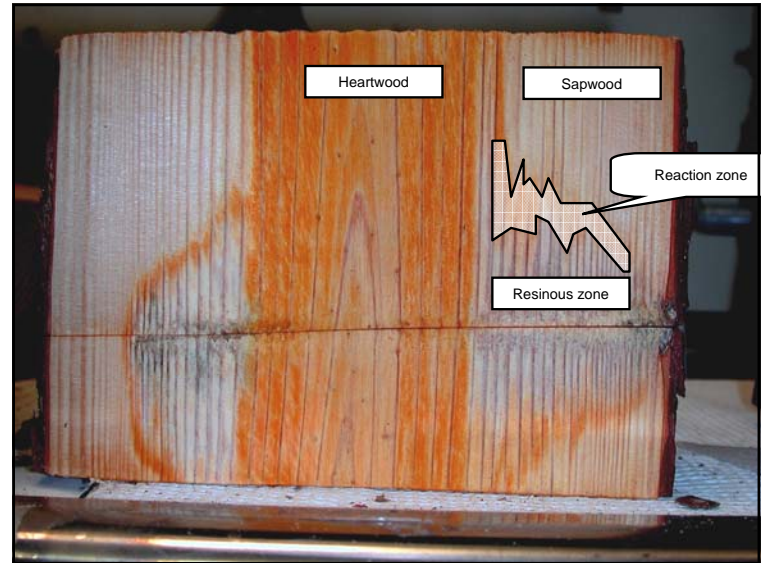
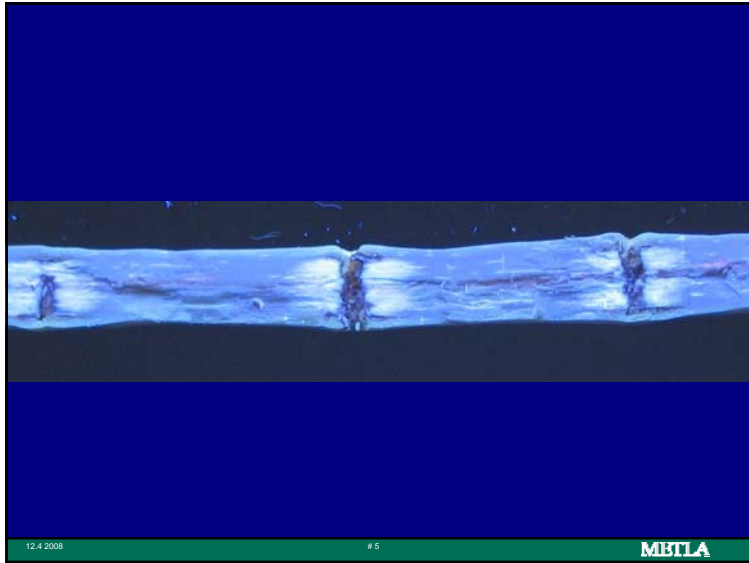
METLA
Metlan u k m u d a l o s Skogsforskningsinstitutet Finnish Forest Research Institute www.metla.fi

The aim was to describe changes
that take place in Scots pine sapwood after
wounding with an increment core bore (\varnothing 5mm)

Another aim was to compare
the extractive content of the “wound heartwood” with
the extractive content of natural heartwood

12.4.2008 # 2 **METLA**





Sample	Total resin acids (mg/g)
Resinous zone	593.1 (126.9)
Reaction zone	260.1 (70.6)
Sapwood	2.6 (1.6)
Heartwood	45.6 (41.9)

Sample	Stilbenes (mg/g)	Total resin acids (mg/g)
Resinous zone	not analysed	593.1 (126.9)
Reaction zone	2.95 (1.60) *)	260.1 (70.6) *)
Sapwood	not analysed	2.6 (1.6)
Heartwood	10.00 (4.91)	45.6 (41.9)

*) pinosylvin + pinosylvin monomethylether

*) more details about the relative amount of different resin acids are presented in the poster

