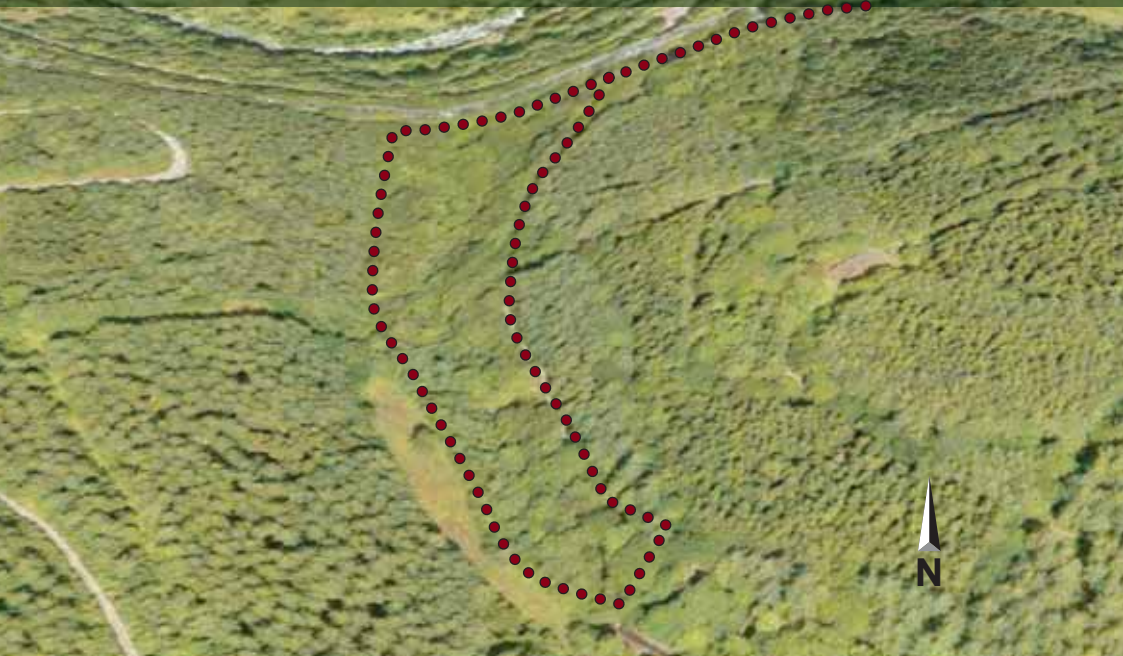




# Taith Nant Cynon Nant Cynon Walk

9



Er yn un o'r llwybrau byrraf yn Afan, mae yn llawn dop o nodweddion diddorol.

Although one of the shortest of Afan's walks, it is packed with interesting features.

Wrth i chi ddilyn yr Afon Cynon ar hyd y llwybr hawdd ac wrth ymyl y coetiroedd hynafol, fyddwch yn mynd heibio i greiriau o orffennol diwydiannol Afan.

Following the Cynon River along easy forest tracks and beside ancient woodlands, you will pass many relics of Afan's industrial past.



● 1m/1.6km (hawdd)

🕒 0.75 awr

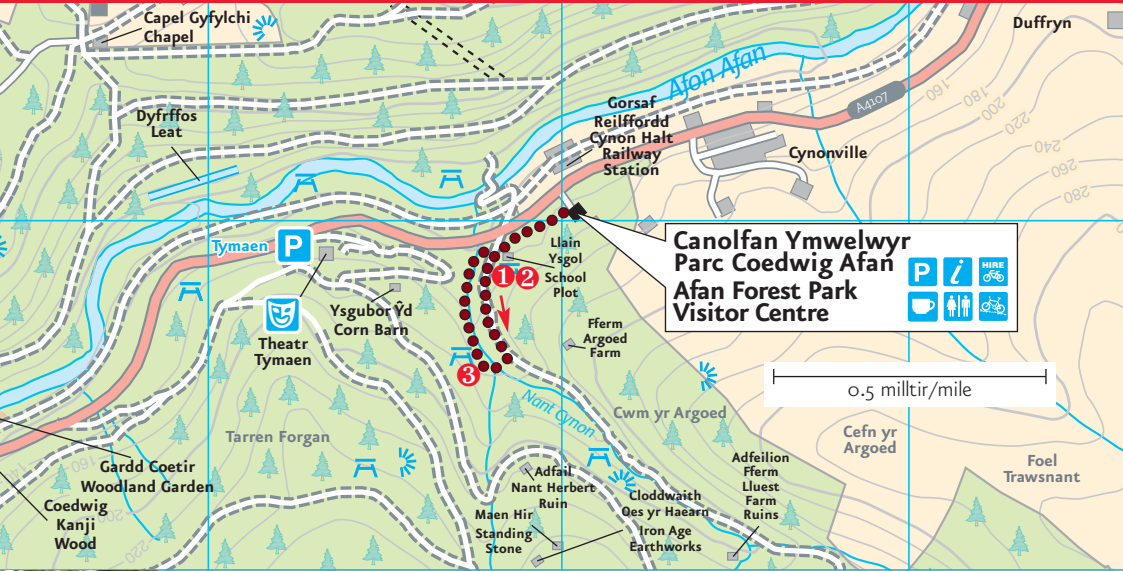
➡ **Dechrau:** Canolfan Parc Coedwig Afan

● 1m/1.6km (easy)

🕒 0.75 hour

➡ **Start:** Afan Forest Park Visitor Centre

# Taith Nant Cynon Nant Cynon Walk



1

Maer llwybr yma yn mynd heibio i **Llain Ysgol Afan** ①. Erbyn y 1950au, roedd Dyffryn Afan yn dangos creithiau ei dyfodol diwydiannol fe benderfynwyd trawsnewid y dyffryn fewn i un yrdd. Fe wnaeth y Comisiwn Coedwigaeth ac Ysgol Uwchradd Cymer Afan ddatblygu dosbarth allan yn yr awyr agored er mwyn rhoi rhagolwg ffres i blant ar fywyd ac addysg mewn amser lle mae gobethion dyfodol yn eithaf llwm.

Fe greodd yr ysgol planhigfa goed ar hen safle **Bricwaith Argoed** ②. Fedrwhc dal i weld ei stamp 'Hudson a Howell' ar y briciau o dan y sedd. Yr ochr arall i'r trac ar y rhan glaswelltog gwastad maer hen gillfordd rheilffordd, ac edrychwch allan am grŵp o goed conwydd mawr ar y llethr serth wrth ymyl ffordd y goedwig. Cafodd y man yma ei astudio'n gynharach gan y disgyblion i weld sut oedd coed conwydd yn tyfu ar wastraff glo.

Parhewch ar ffordd y goedwig, a oedd unwaith yn dramffordd i'r glofeydd uwchben, ac ewch i lawr y llwybr tuag at yr afon a chroesi'r bont. Oddi yma fedrwhc weld y gwastraff glo o'r hen **Lefel Cynon** ③ sydd yn gorwedd ar lan yr afon. Ar ôl croesi'r nant ceir yna ddam o dir gwastad. Roedd yn arfer bod yn domen lo ond bellach mae'n ddôl gwlyb a dyma'r safle cyntaf i gael ei adfer gan y Comisiwn Coedwigaeth yng Nghymru yn 1971. Wrth ymylon y ddôl fedrwhc hyd y dydd heddiw weld y fynedfa seiliedig i Lefel Pwll Glo Cynon gafodd ei gau yn 1956.

This wooded walk passes the **Afan School Plot** ①. By the 1950's, the Afan Valley bore the scars of its industrial past and it was decided to make the valley green again. The Forestry Commission and Cymer Afan Secondary School developed an outdoor classroom to give children a fresh outlook on life and learning at a time of bleak prospects.

The school created a tree nursery on the former site of the **Argoed Brickworks** ②. You can still see the 'Hudson and Howell' stamp on their bricks under the seat. Across the track on the flat grassy area were the old railway sidings, and look out for a small group of large conifer trees on the steep bank beside the forest road. This was an early study by the school to see how young conifer trees grew on coal waste.

Continuing up the forest road, once an old tramway for the coal mines above, take the path down to the river and cross the bridge. From here you can see coal waste from the old **Cynon Level** ③ making up much of the river bank. After you cross the stream a flat area opens up. This is now a wet meadow but used to be a coal tip, and was the first site to be restored by the Forestry Commission in Wales in 1971. You can still see the sealed up entrance to the 'Cynon Colliery Level abandoned in 1956' at the edge of the meadow.